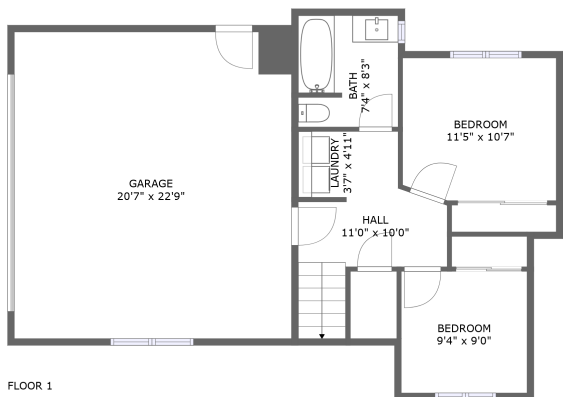
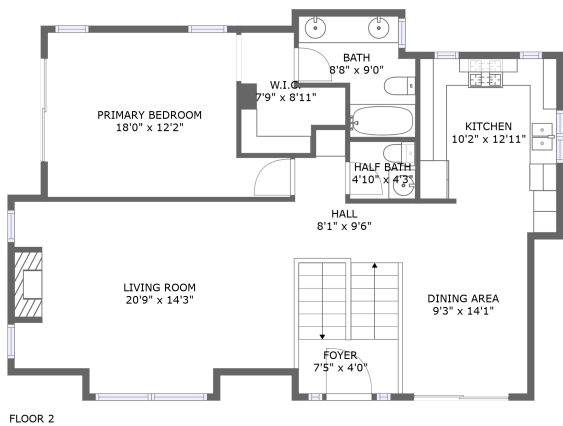



Home report

1697 Newport Avenue, Grover Beach, California 93433, United States




Property summary

 **1** Garages


 **3** Bedrooms

 **2** Bathrooms

 **1** Half baths

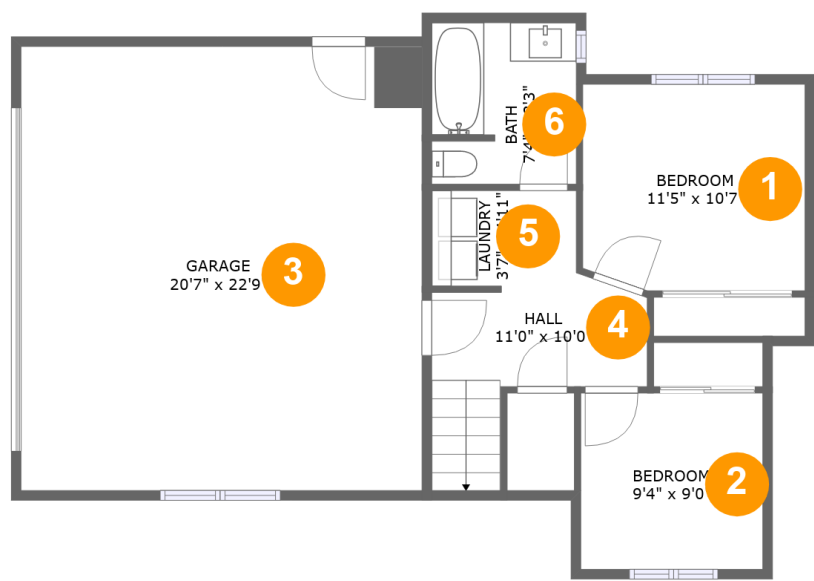
 **2** Floors

 **1,544** Gross living area sqft

 **2,043** Total sqft

Home report

1697 Newport Avenue, Grover Beach, California 93433, United States



Room dimensions

Floor 1

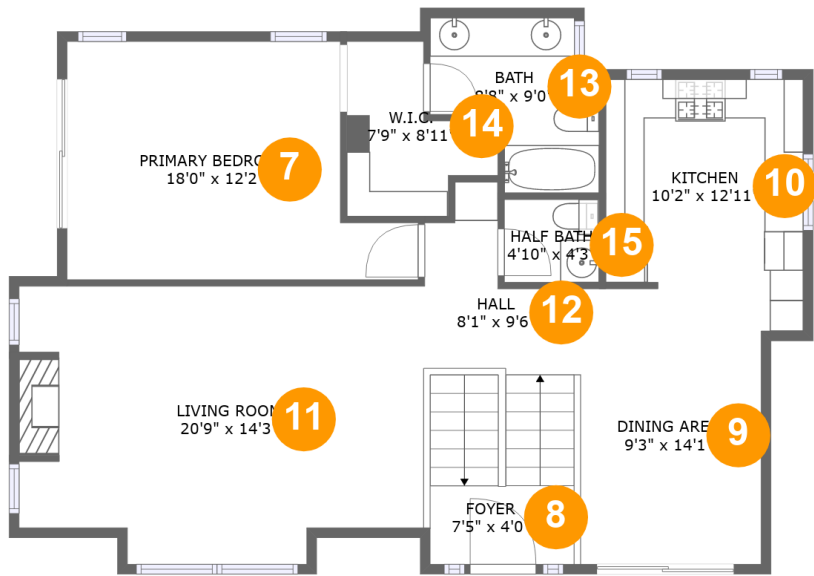
Total sqft: 989

Living area: 490

#		Max Dimensions	sqft	Included
1	Bedroom	11'5" x 10'7"	118 sq. ft	Yes
2	Bedroom	9'4" x 9'0"	84 sq. ft	Yes
3	Garage	20'7" x 22'9"	467 sq. ft	No
4	Hall	11'0" x 10'0"	93 sq. ft	Yes
5	Laundry	3'7" x 4'11"	17 sq. ft	Yes
6	Bath	7'4" x 8'3"	60 sq. ft	Yes

Home report

1697 Newport Avenue, Grover Beach, California 93433, United States



Room dimensions

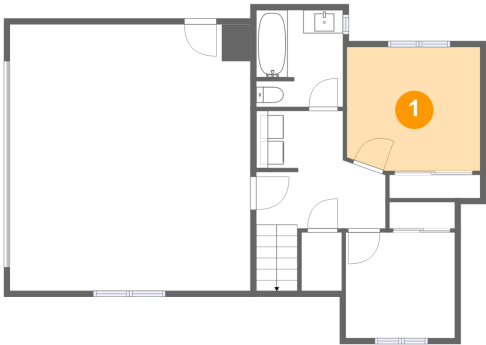
Floor 2

Total sqft: 1054

Living area: 1054

#		Max Dimensions	sqft	Included
7	Primary Bedroom	18'0" x 12'2"	182 sq. ft	Yes
8	Foyer	7'5" x 4'0"	79 sq. ft	Yes
9	Dining Area	9'3" x 14'1"	125 sq. ft	Yes
10	Kitchen	10'2" x 12'11"	118 sq. ft	Yes
11	Living Room	20'9" x 14'3"	272 sq. ft	Yes
12	Hall	8'1" x 9'6"	51 sq. ft	Yes
13	Bath	8'8" x 9'0"	58 sq. ft	Yes
14	W.I.C.	7'9" x 8'11"	48 sq. ft	Yes
15	Half Bath	4'10" x 4'3"	21 sq. ft	Yes

1 Floor 1 - Bedroom



Max Dimensions: 11'5" x 10'7"
Calculated Area: 118 sq. ft
Included: Yes

Heated: Yes
Finished: Yes
Enclosed: Yes
Contiguous: Yes
Permitted: Yes
Wet space: No
Addition: No
Conversion: No

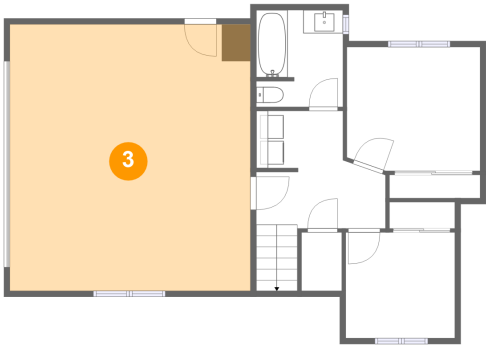
2 Floor 1 - Bedroom



Max Dimensions: 9'4" x 9'0"
Calculated Area: 84 sq. ft
Included: Yes

Heated: Yes
Finished: Yes
Enclosed: Yes
Contiguous: Yes
Permitted: Yes
Wet space: No
Addition: No
Conversion: No

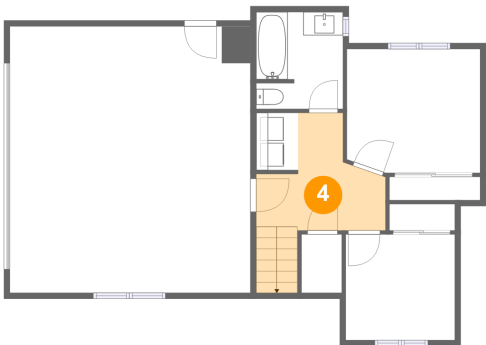
3 Floor 1 - Garage



Max Dimensions: 20'7" x 22'9"
Calculated Area: 467 sq. ft
Included: No

Heated: No
Finished: No
Enclosed: Yes
Contiguous: Yes
Permitted: Yes
Wet space: No
Addition: No
Conversion: No

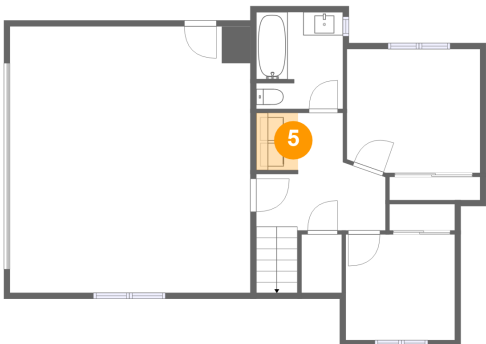
4 Floor 1 - Hall



Max Dimensions: 11'0" x 10'0"
Calculated Area: 93 sq. ft
Included: Yes

Heated: Yes
Finished: Yes
Enclosed: Yes
Contiguous: Yes
Permitted: Yes
Wet space: No
Addition: No
Conversion: No

5 Floor 1 - Laundry

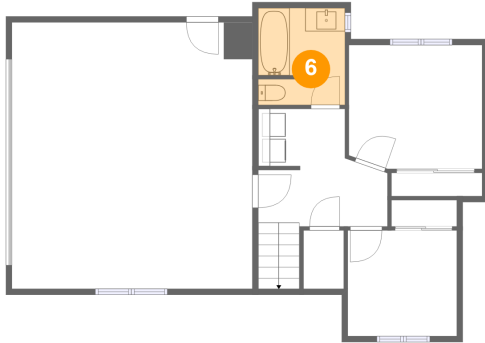


Max Dimensions: 3'7" x 4'11"
Calculated Area: 17 sq. ft
Included: Yes

Heated: Yes
Finished: Yes
Enclosed: Yes
Contiguous: Yes
Permitted: Yes
Wet space: No
Addition: No
Conversion: No

1697 Newport Avenue, Grover Beach, California 93433, United States

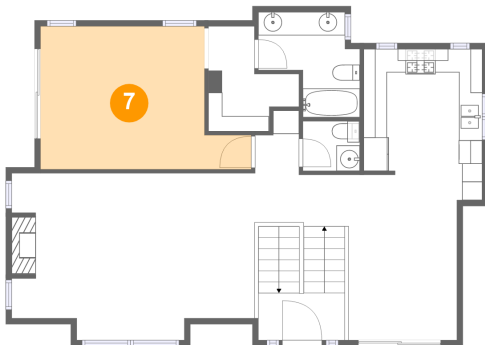
6 Floor 1 - Bath



Max Dimensions: 7'4" x 8'3"
Calculated Area: 60 sq. ft
Included: Yes

Heated: Yes
Finished: Yes
Enclosed: Yes
Contiguous: Yes
Permitted: Yes
Wet space: Yes
Addition: No
Conversion: No

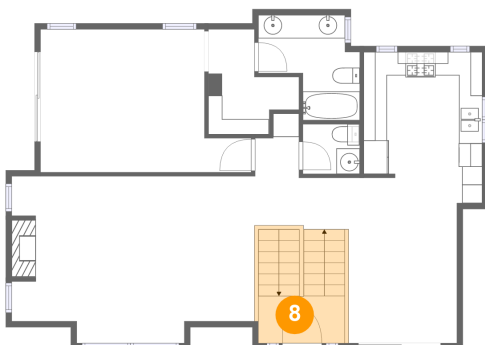
7 Floor 2 - Primary Bedroom



Max Dimensions: 18'0" x 12'2"
Calculated Area: 182 sq. ft
Included: Yes

Heated: Yes
Finished: Yes
Enclosed: Yes
Contiguous: Yes
Permitted: Yes
Wet space: No
Addition: No
Conversion: No

8 Floor 2 - Foyer



Max Dimensions: 7'5" x 4'0"
Calculated Area: 79 sq. ft
Included: Yes

Heated: Yes
Finished: Yes
Enclosed: Yes
Contiguous: Yes
Permitted: Yes
Wet space: No
Addition: No
Conversion: No

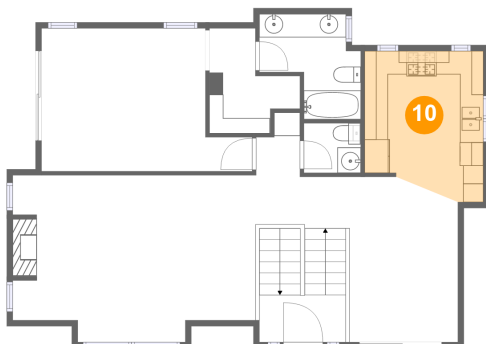
9 Floor 2 - Dining Area



Max Dimensions: 9'3" x 14'1"
Calculated Area: 125 sq. ft
Included: Yes

Heated: Yes
Finished: Yes
Enclosed: Yes
Contiguous: Yes
Permitted: Yes
Wet space: No
Addition: No
Conversion: No

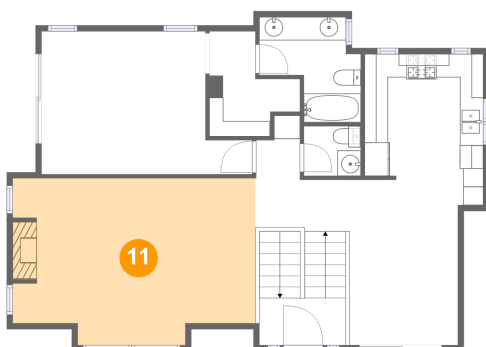
10 Floor 2 - Kitchen



Max Dimensions: 10'2" x 12'11"
Calculated Area: 118 sq. ft
Included: Yes

Heated: Yes
Finished: Yes
Enclosed: Yes
Contiguous: Yes
Permitted: Yes
Wet space: No
Addition: No
Conversion: No

11 Floor 2 - Living Room

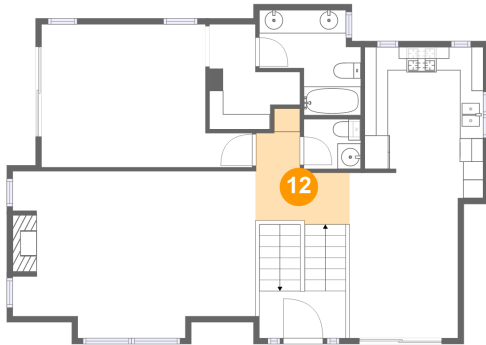


Max Dimensions: 20'9" x 14'3"
Calculated Area: 272 sq. ft
Included: Yes

Heated: Yes
Finished: Yes
Enclosed: Yes
Contiguous: Yes
Permitted: Yes
Wet space: No
Addition: No
Conversion: No

1697 Newport Avenue, Grover Beach, California 93433, United States

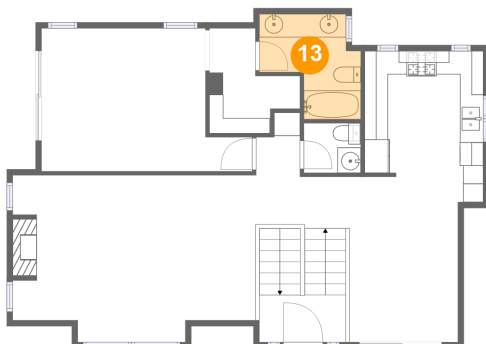
12 Floor 2 - Hall



Max Dimensions: 8'1" x 9'6"
Calculated Area: 51 sq. ft
Included: Yes

Heated: Yes
Finished: Yes
Enclosed: Yes
Contiguous: Yes
Permitted: Yes
Wet space: No
Addition: No
Conversion: No

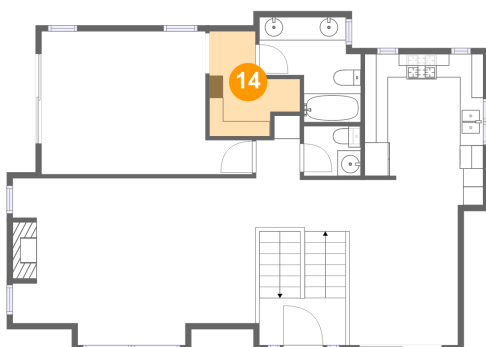
13 Floor 2 - Bath



Max Dimensions: 8'8" x 9'0"
Calculated Area: 58 sq. ft
Included: Yes

Heated: Yes
Finished: Yes
Enclosed: Yes
Contiguous: Yes
Permitted: Yes
Wet space: Yes
Addition: No
Conversion: No

14 Floor 2 - W.I.C.



Max Dimensions: 7'9" x 8'11"
Calculated Area: 48 sq. ft
Included: Yes

Heated: Yes
Finished: Yes
Enclosed: Yes
Contiguous: Yes
Permitted: Yes
Wet space: No
Addition: No
Conversion: No

1697 Newport Avenue, Grover Beach, California 93433, United States

15 Floor 2 - Half Bath



Max Dimensions: 4'10" x 4'3"
Calculated Area: 21 sq. ft
Included: Yes

Heated: Yes
Finished: Yes
Enclosed: Yes
Contiguous: Yes
Permitted: Yes
Wet space: Yes
Addition: No
Conversion: No