

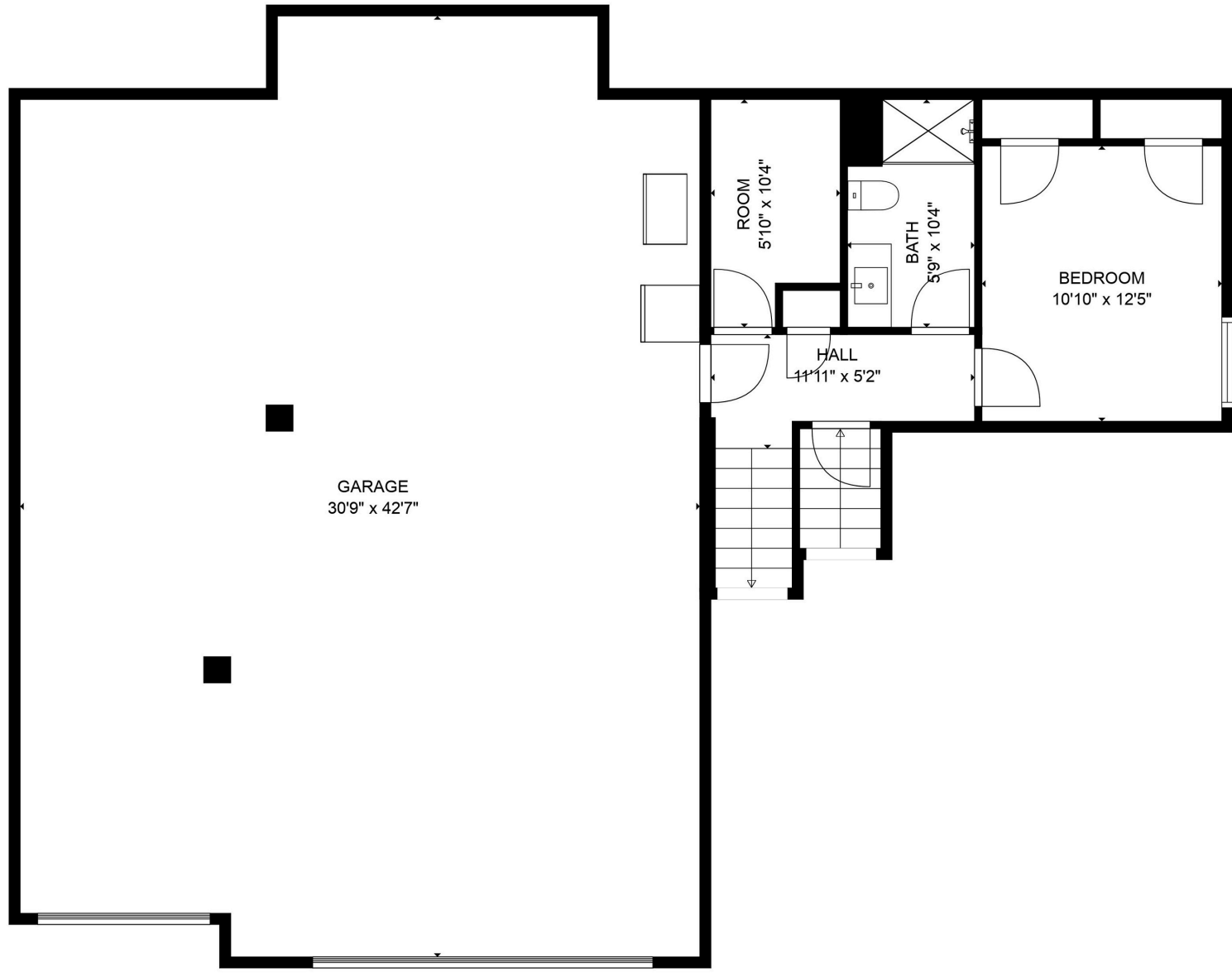
BEDROOM  
24'6" x 15'8"



**Floor Plan & Measurements**

908 SE Forest Ridge Ct  
Blue Springs, MO 64014

SIZES AND DIMENSIONS ARE APPROXIMATE, ACTUAL MAY VARY

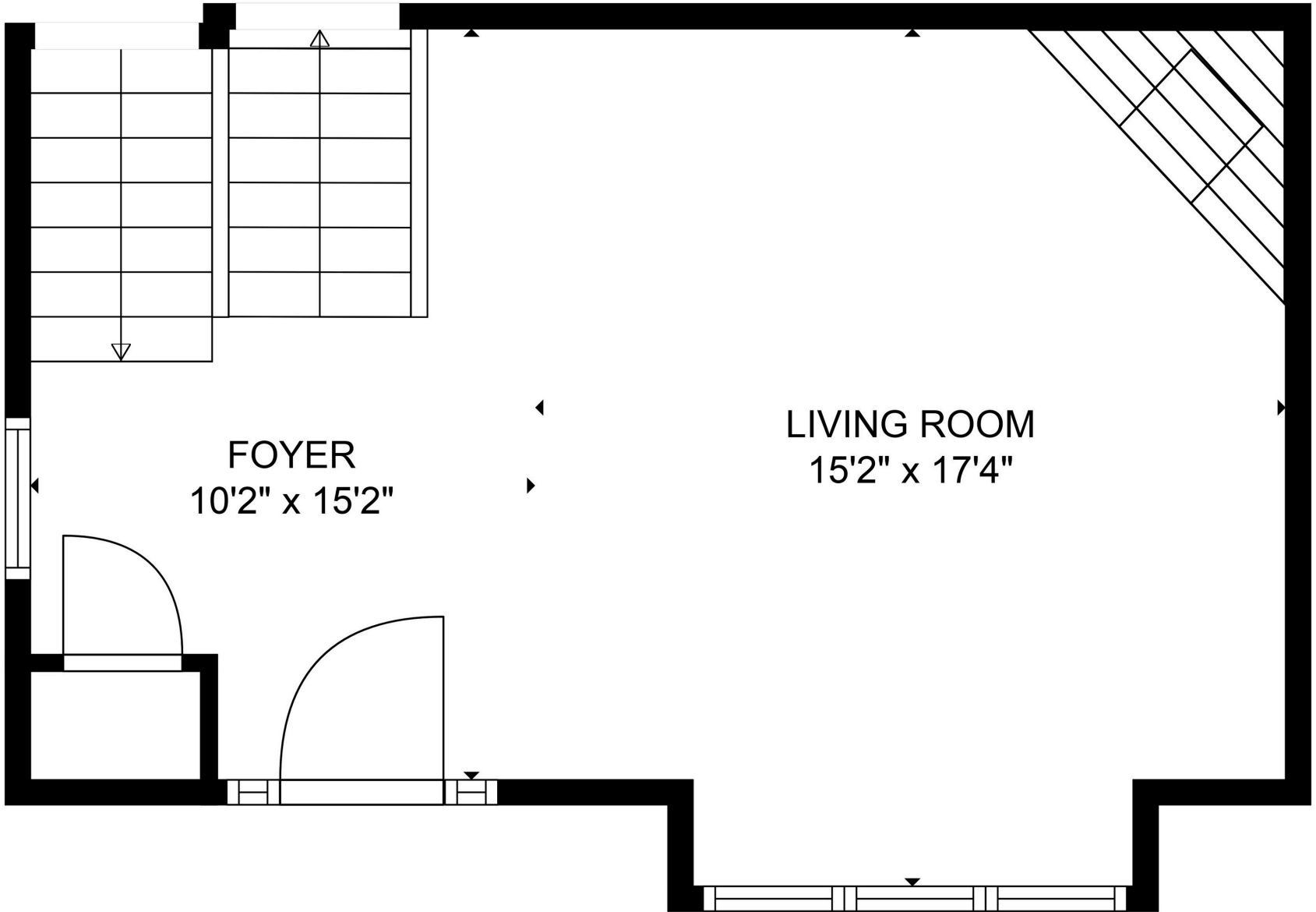


**Floor Plan & Measurements**

908 SE Forest Ridge Ct  
Blue Springs, MO 64014

SIZES AND DIMENSIONS ARE APPROXIMATE, ACTUAL MAY VARY





FOYER  
10'2" x 15'2"

LIVING ROOM  
15'2" x 17'4"

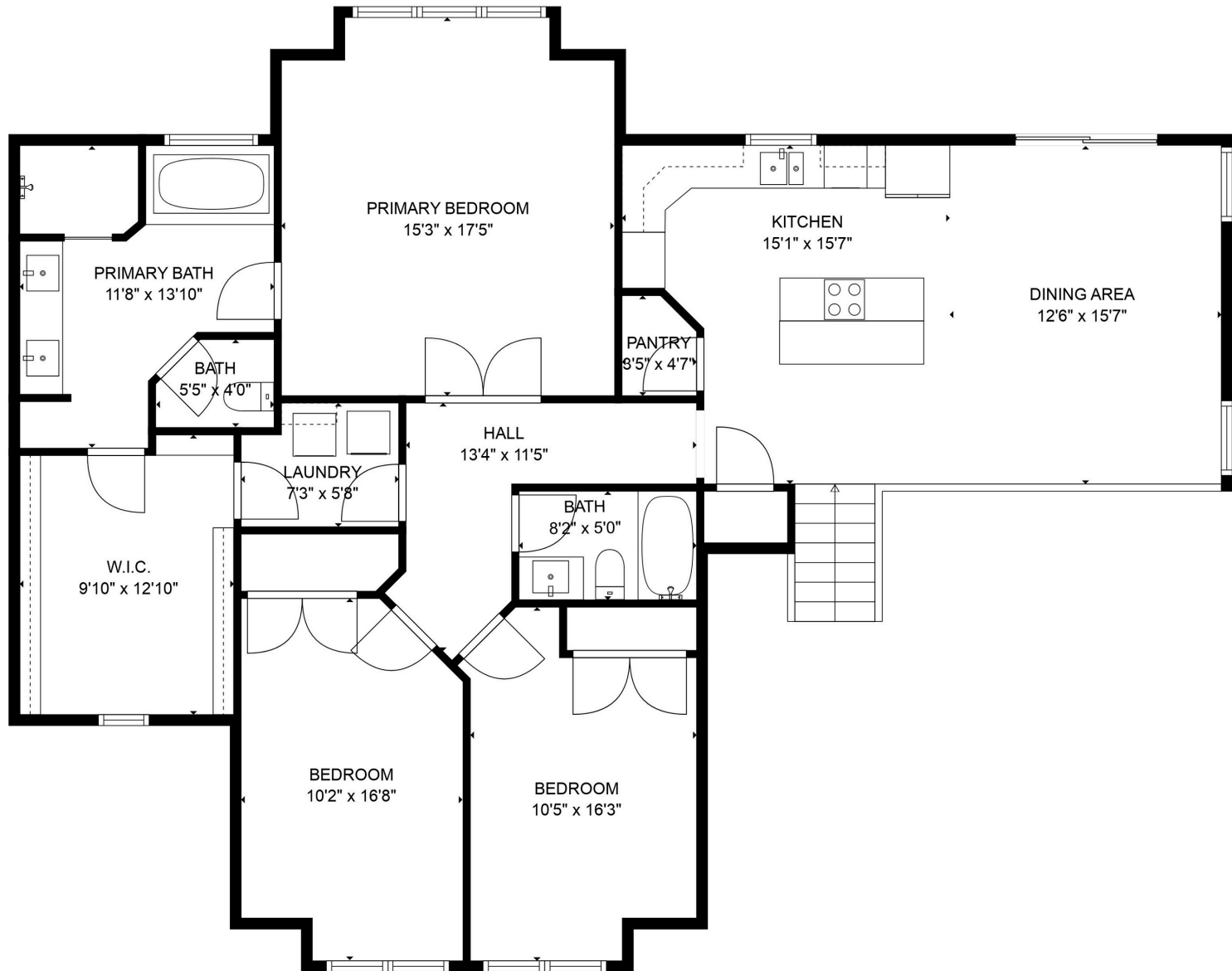


DANLYNN HOME  
DANLYNNHOME.COM

**Floor Plan & Measurements**

908 SE Forest Ridge Ct  
Blue Springs, MO 64014

SIZES AND DIMENSIONS ARE APPROXIMATE, ACTUAL MAY VARY



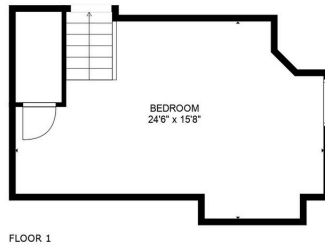
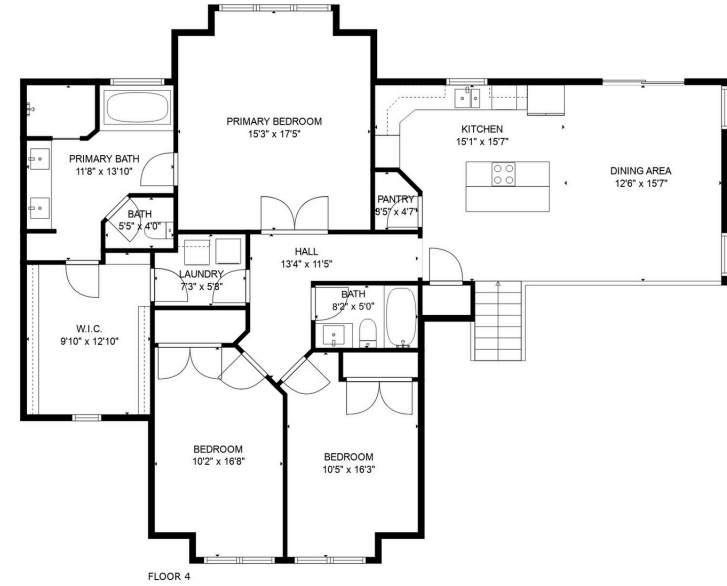
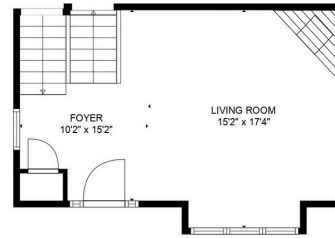
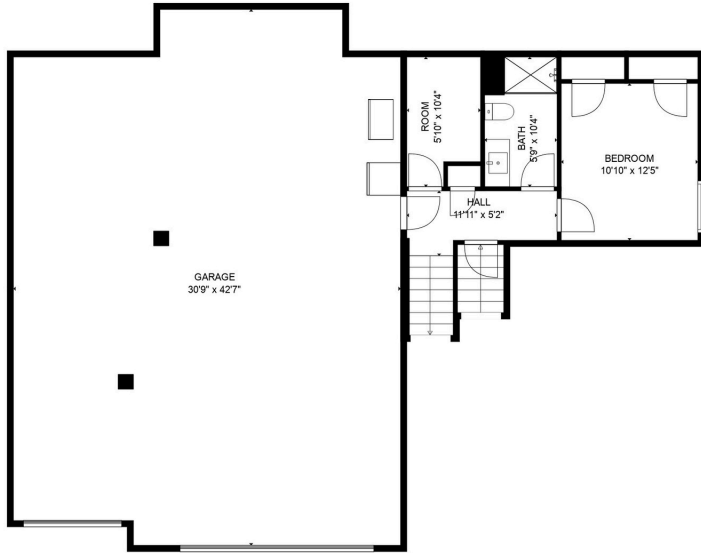
**Floor Plan & Measurements**

908 SE Forest Ridge Ct  
 Blue Springs, MO 64014

SIZES AND DIMENSIONS ARE APPROXIMATE, ACTUAL MAY VARY



CARROLL HOME BUILDERS



### Floor Plan & Measurements

908 SE Forest Ridge Ct  
Blue Springs, MO 64014

SIZES AND DIMENSIONS ARE APPROXIMATE, ACTUAL MAY VARY



GARLAND HOME  
REAL ESTATE