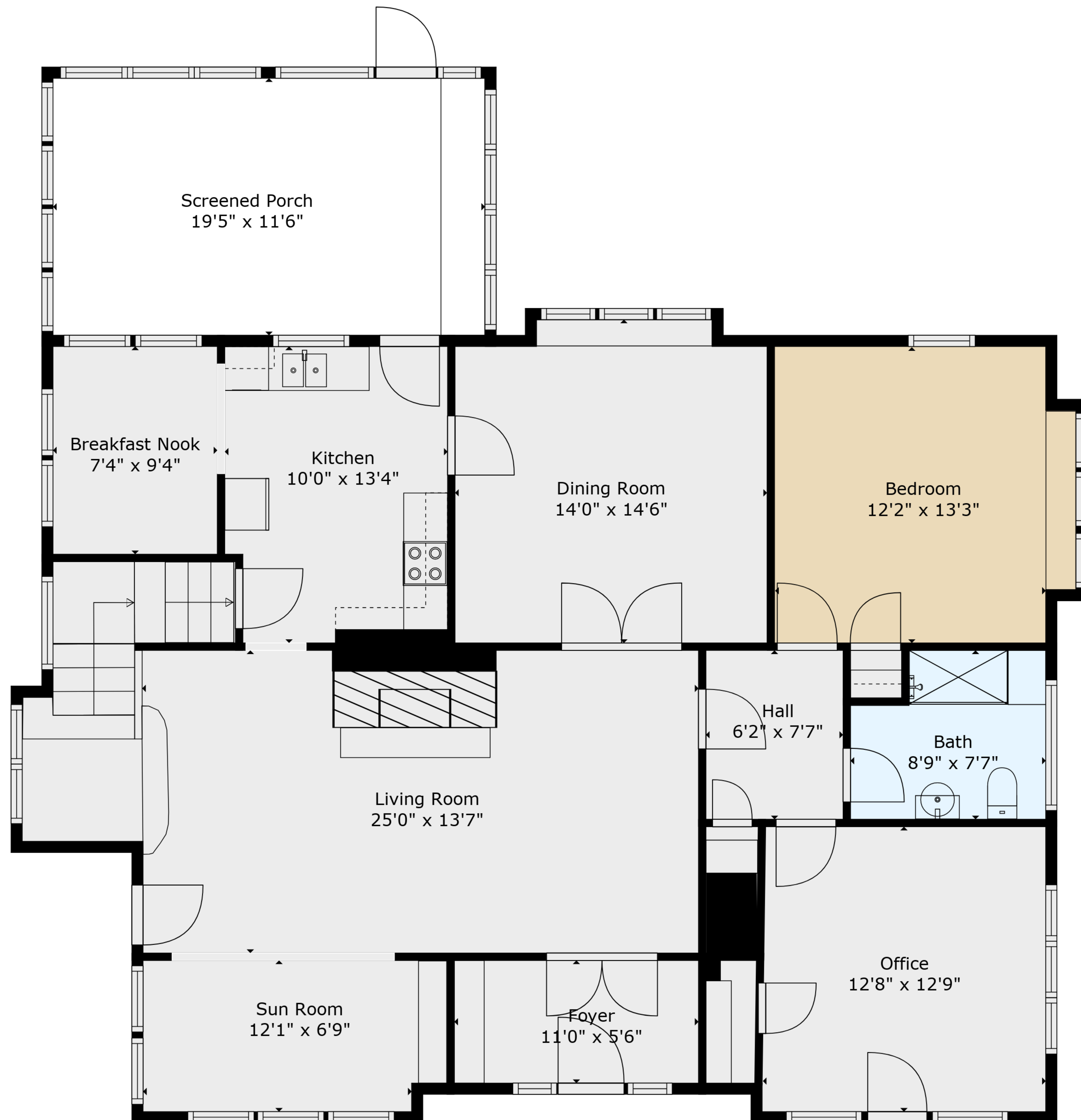


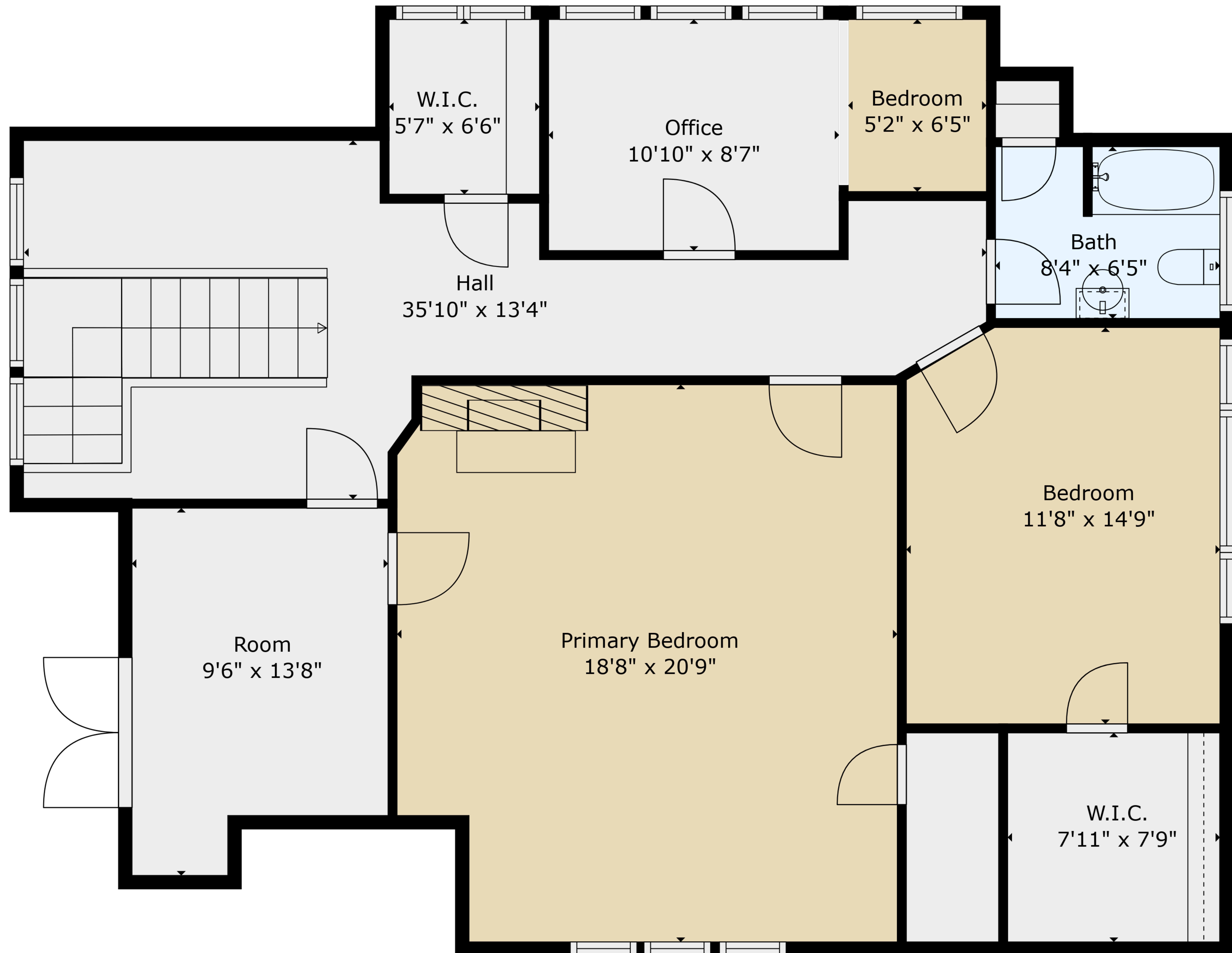
Basement  
35'3" x 23'5"

**TOTAL: 2817 sq. ft**  
BELOW GROUND: 6 sq. ft, FLOOR 2: 1495 sq. ft, FLOOR 3: 1316 sq. ft  
EXCLUDED AREAS: BASEMENT: 792 sq. ft, SCREENED PORCH: 224 sq. ft  
WALLS: 244 sq. ft

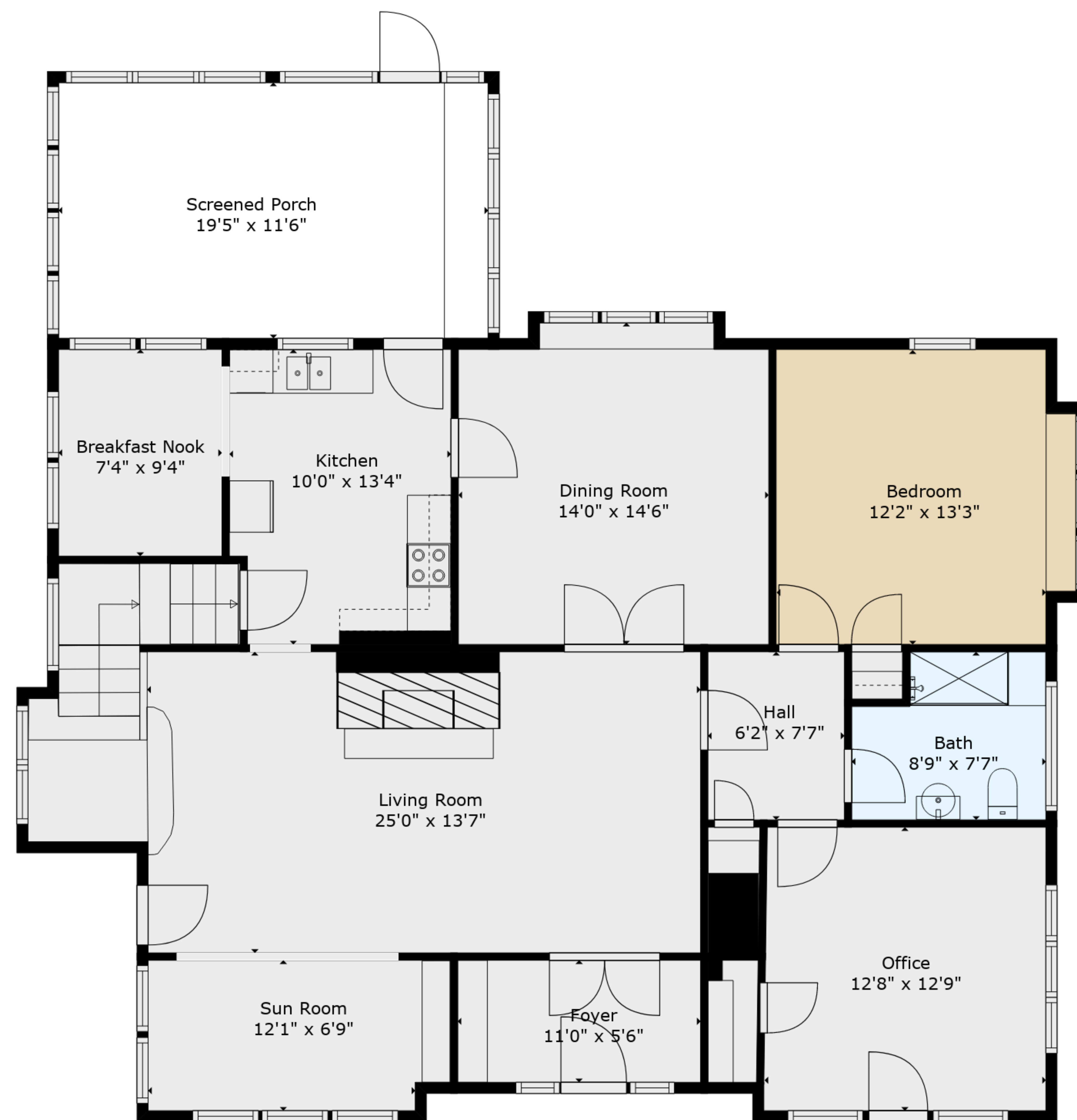


**TOTAL: 2817 sq. ft**  
BELOW GROUND: 6 sq. ft, FLOOR 2: 1495 sq. ft, FLOOR 3: 1316 sq. ft  
EXCLUDED AREAS: BASEMENT: 792 sq. ft, SCREENED PORCH: 224 sq. ft  
WALLS: 244 sq. ft

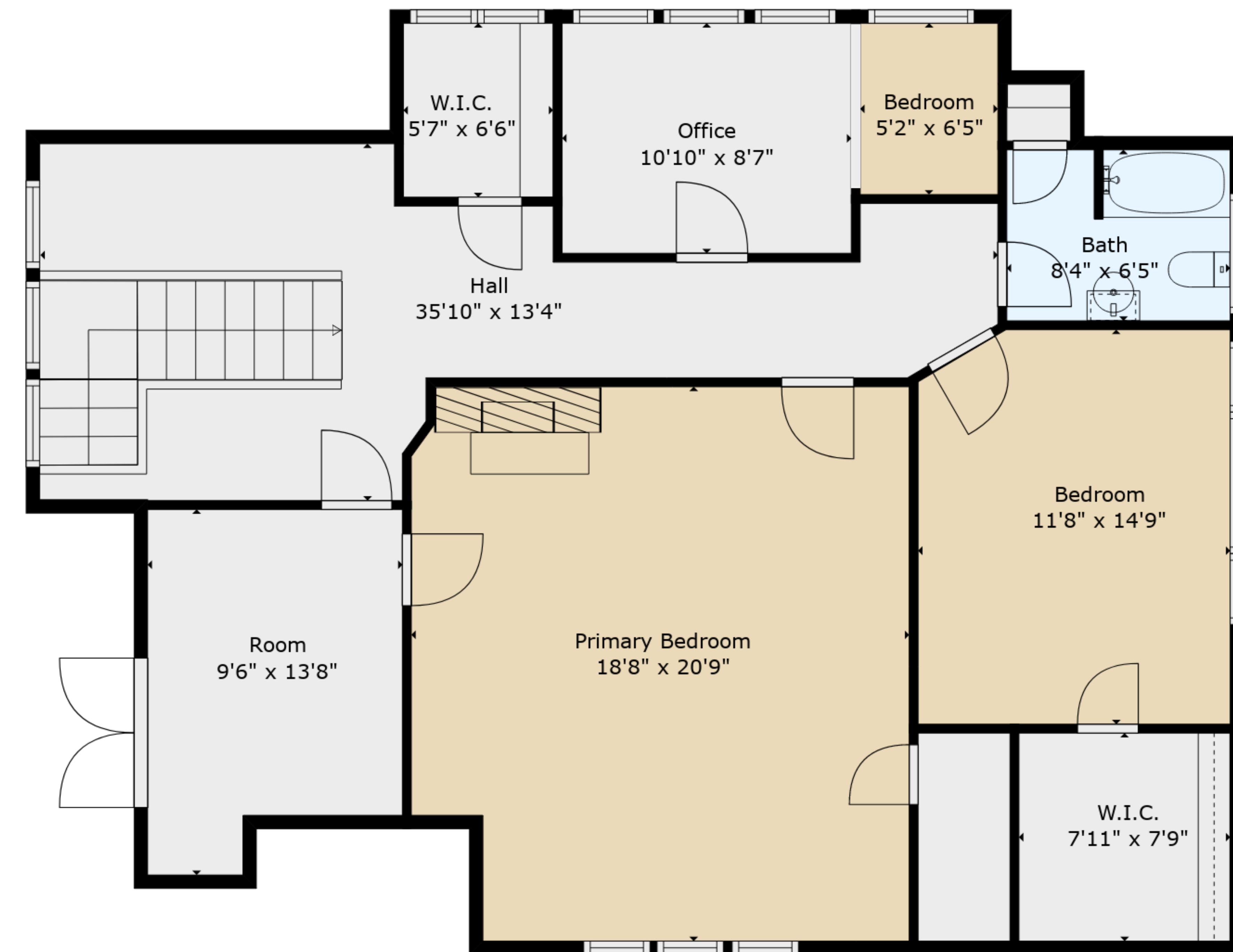




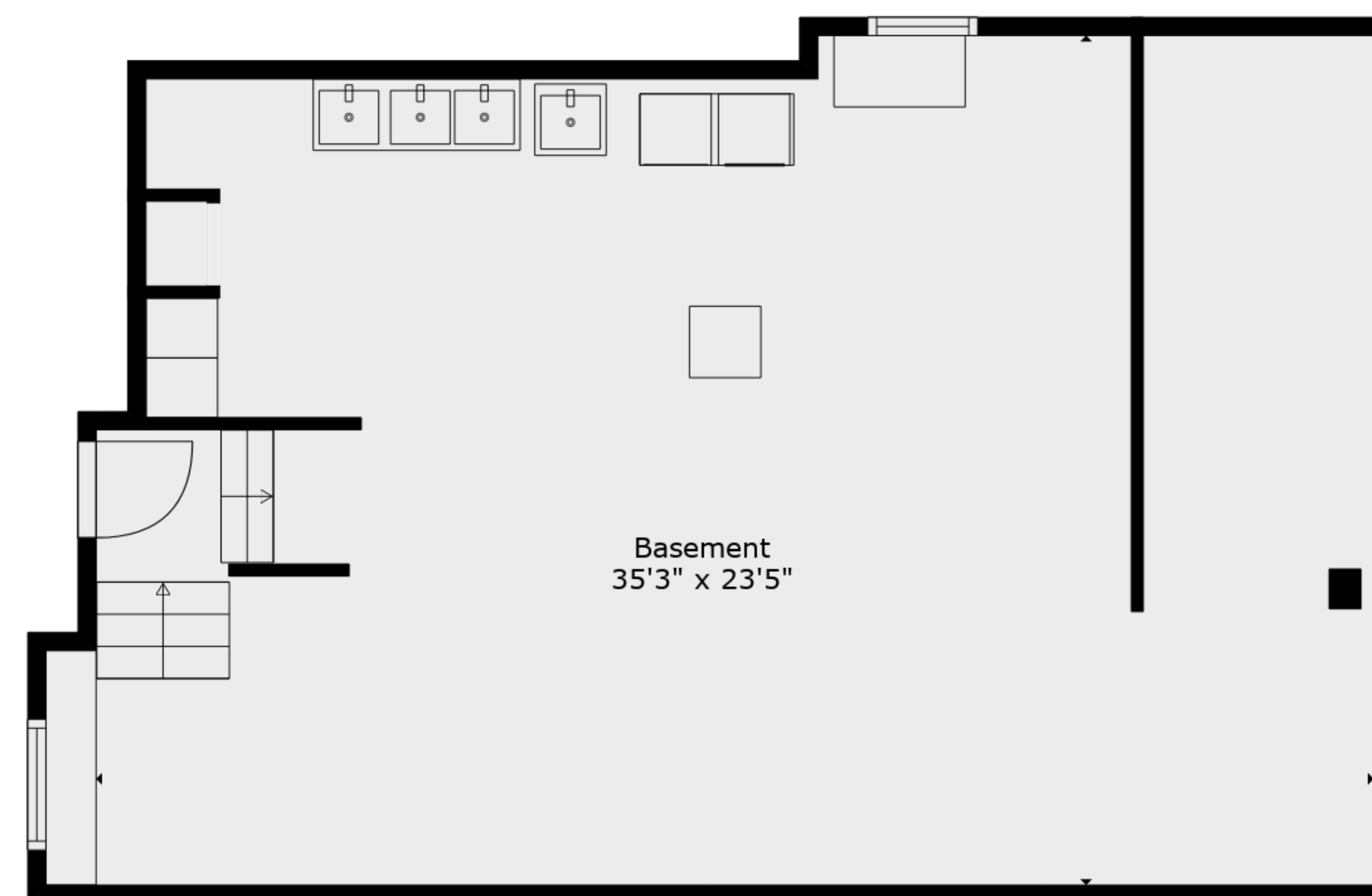
**TOTAL: 2817 sq. ft**  
BELOW GROUND: 6 sq. ft, FLOOR 2: 1495 sq. ft, FLOOR 3: 1316 sq. ft  
EXCLUDED AREAS: BASEMENT: 792 sq. ft, SCREENED PORCH: 224 sq. ft  
WALLS: 244 sq. ft



Floor 2



Floor 3



Floor 1

**TOTAL: 2817 sq. ft**  
 BELOW GROUND: 6 sq. ft, FLOOR 2: 1495 sq. ft, FLOOR 3: 1316 sq. ft  
 EXCLUDED AREAS: BASEMENT: 792 sq. ft, SCREENED PORCH: 224 sq. ft  
 WALLS: 244 sq. ft