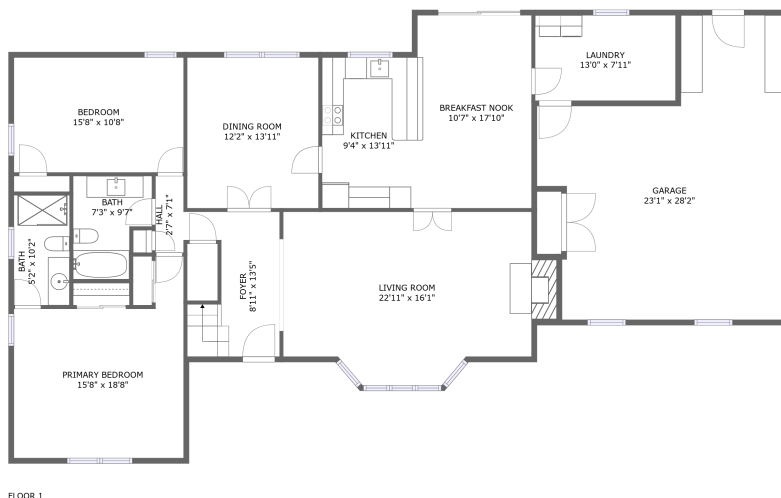
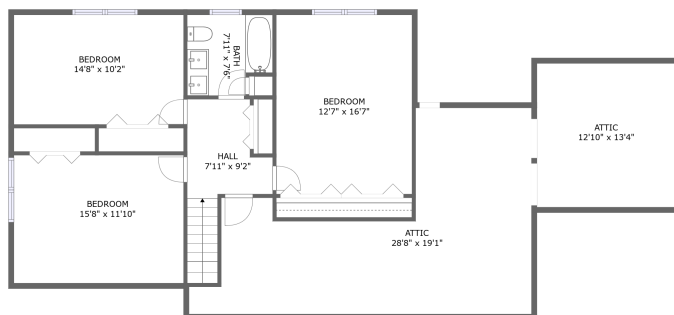


24 Appletree Drive, Matawan, Middlesex County, New Jersey, United States, 07747



Property summary

 **1** Garages

 **5** Bedrooms

 **3** Bathrooms

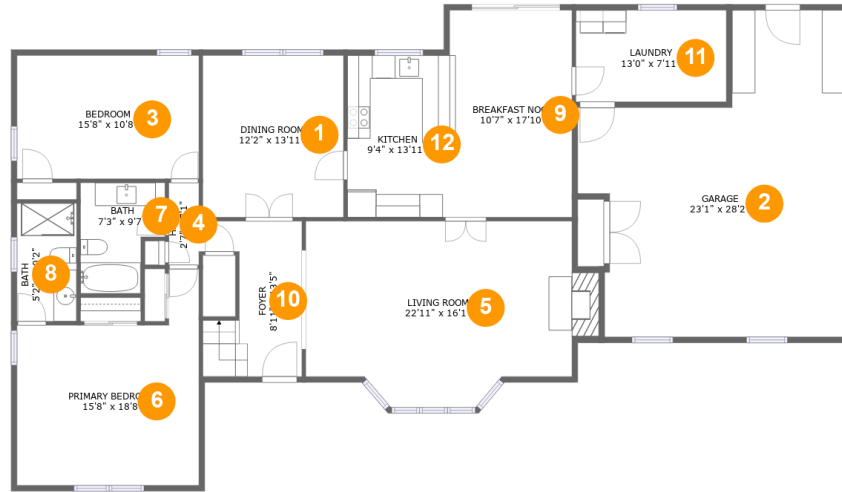
 **0** Half baths

 **2** Floors

 **2,558** Gross living area sqft

 **3,775** Total sqft

24 Appletree Drive, Matawan, Middlesex County, New Jersey, United States, 07747



Room dimensions

Floor 1

Total sqft: 2319 Living area: 1742

#		Dimensions	sqft	Counted as living area
1	Dining Room	12'2" x 13'11"	169 sq. ft	Yes
2	Garage	23'1" x 28'2"	506 sq. ft	No
3	Bedroom	15'8" x 10'8"	167 sq. ft	Yes
4	Hall	2'7" x 7'1"	18 sq. ft	Yes
5	Living Room	22'11" x 16'1"	346 sq. ft	Yes
6	Bedroom	15'8" x 18'8"	229 sq. ft	Yes
7	Bath	7'3" x 9'7"	59 sq. ft	Yes
8	Bath	5'2" x 10'2"	52 sq. ft	Yes
9	Nook	10'7" x 17'10"	181 sq. ft	Yes
10	Entry	8'11" x 13'5"	97 sq. ft	Yes
11	Utility	13'0" x 7'11"	103 sq. ft	Yes

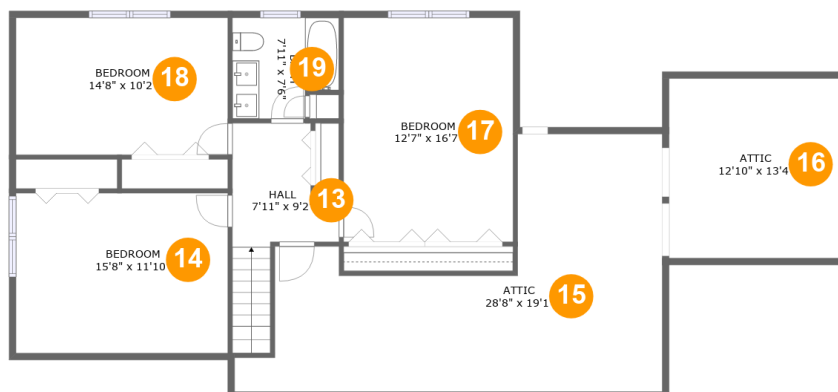
Scan captured on Mon, 18 Nov 2024 21:52:49 GMT

Information is calculated by Cubicasa technology deemed highly reliable but not guaranteed.

24 Appletree Drive, Matawan, Middlesex County, New Jersey, United States, 07747

#		Dimensions	sqft	Counted as living area
12	Kitchen	9'4" x 13'11"	130 sq. ft	Yes

24 Appletree Drive, Matawan, Middlesex County, New Jersey, United States, 07747



Room dimensions

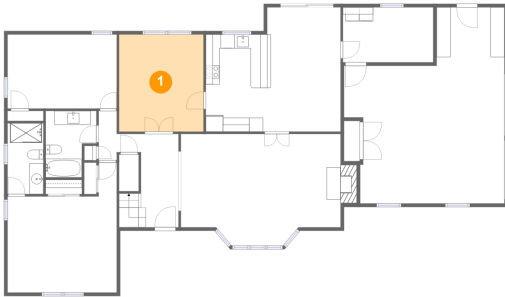
Floor 2

Total sqft: 1456 Living area: 816

#		Dimensions	sqft	Counted as living area
13	Hall	7'11" x 9'2"	81 sq. ft	Yes
14	Bedroom	15'8" x 11'10"	159 sq. ft	Yes
15	Attic	28'8" x 19'1"	238 sq. ft	No
16	Attic	12'10" x 13'4"	67 sq. ft	No
17	Bedroom	12'7" x 16'7"	208 sq. ft	Yes
18	Bedroom	14'8" x 10'2"	159 sq. ft	Yes
19	Bath	7'11" x 7'6"	54 sq. ft	Yes

24 Appletree Drive, Matawan, Middlesex County, New Jersey, United States, 07747

1 Floor 1 - Dining Room



Dimensions: 12'2" x 13'11"
Area: 169 sq. ft
Counted as living area: Yes

Heated: Yes
Finished: Yes
Enclosed: Yes
Contiguous: Yes
Permitted: Yes
Wet space: No
Addition: No
Conversion: No

2 Floor 1 - Garage



Dimensions: 23'1" x 28'2"
Area: 506 sq. ft
Counted as living area: No

Heated: No
Finished: No
Enclosed: Yes
Contiguous: Yes
Permitted: Yes
Wet space: No
Addition: No
Conversion: No

24 Appletree Drive, Matawan, Middlesex County, New Jersey, United States, 07747

3 Floor 1 - Bedroom



Dimensions: 15'8" x 10'8"
Area: 167 sq. ft
Counted as living area: Yes

Heated: Yes
Finished: Yes
Enclosed: Yes
Contiguous: Yes
Permitted: Yes
Wet space: No
Addition: No
Conversion: No

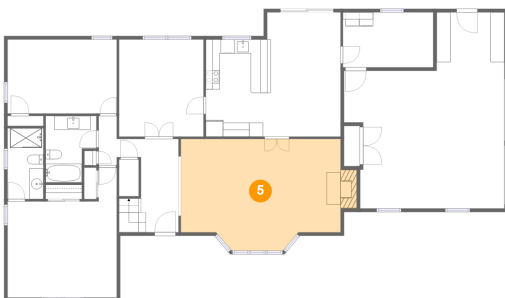
4 Floor 1 - Hall



Dimensions: 2'7" x 7'1"
Area: 18 sq. ft
Counted as living area: Yes

Heated: Yes
Finished: Yes
Enclosed: Yes
Contiguous: Yes
Permitted: Yes
Wet space: No
Addition: No
Conversion: No

5 Floor 1 - Living Room



Dimensions: 22'11" x 16'1"
Area: 346 sq. ft
Counted as living area: Yes

Heated: Yes
Finished: Yes
Enclosed: Yes
Contiguous: Yes
Permitted: Yes
Wet space: No
Addition: No
Conversion: No

24 Appletree Drive, Matawan, Middlesex County, New Jersey, United States, 07747

6 Floor 1 - Bedroom



Dimensions: 15'8" x 18'8"
Area: 229 sq. ft
Counted as living area: Yes

Heated: Yes
Finished: Yes
Enclosed: Yes
Contiguous: Yes
Permitted: Yes
Wet space: No
Addition: No
Conversion: No

7 Floor 1 - Bath



Dimensions: 7'3" x 9'7"
Area: 59 sq. ft
Counted as living area: Yes

Heated: Yes
Finished: Yes
Enclosed: Yes
Contiguous: Yes
Permitted: Yes
Wet space: Yes
Addition: No
Conversion: No

8 Floor 1 - Bath

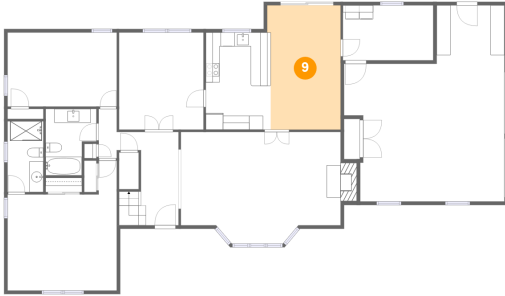


Dimensions: 5'2" x 10'2"
Area: 52 sq. ft
Counted as living area: Yes

Heated: Yes
Finished: Yes
Enclosed: Yes
Contiguous: Yes
Permitted: Yes
Wet space: Yes
Addition: No
Conversion: No

24 Appletree Drive, Matawan, Middlesex County, New Jersey, United States, 07747

9 Floor 1 - Nook



Dimensions: 10'7" x 17'10"
Area: 181 sq. ft
Counted as living area: Yes

Heated: Yes
Finished: Yes
Enclosed: Yes
Contiguous: Yes
Permitted: Yes
Wet space: No
Addition: No
Conversion: No

10 Floor 1 - Entry



Dimensions: 8'11" x 13'5"
Area: 97 sq. ft
Counted as living area: Yes

Heated: Yes
Finished: Yes
Enclosed: Yes
Contiguous: Yes
Permitted: Yes
Wet space: No
Addition: No
Conversion: No

11 Floor 1 - Utility

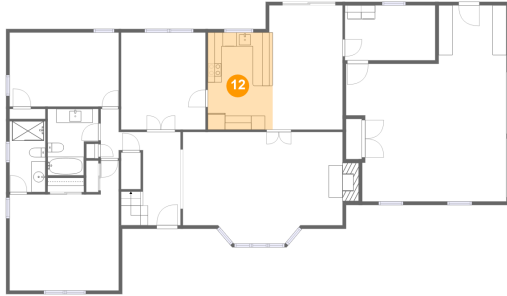


Dimensions: 13'0" x 7'11"
Area: 103 sq. ft
Counted as living area: Yes

Heated: Yes
Finished: Yes
Enclosed: Yes
Contiguous: Yes
Permitted: Yes
Wet space: No
Addition: No
Conversion: No

24 Appletree Drive, Matawan, Middlesex County, New Jersey, United States, 07747

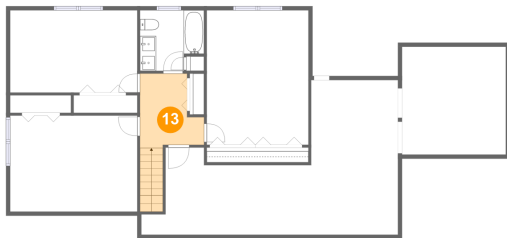
12 Floor 1 - Kitchen



Dimensions: 9'4" x 13'11"
Area: 130 sq. ft
Counted as living area: Yes

Heated: Yes
Finished: Yes
Enclosed: Yes
Contiguous: Yes
Permitted: Yes
Wet space: No
Addition: No
Conversion: No

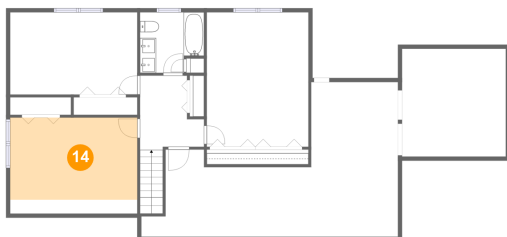
13 Floor 2 - Hall



Dimensions: 7'11" x 9'2"
Area: 81 sq. ft
Counted as living area: Yes

Heated: Yes
Finished: Yes
Enclosed: Yes
Contiguous: Yes
Permitted: Yes
Wet space: No
Addition: No
Conversion: No

14 Floor 2 - Bedroom

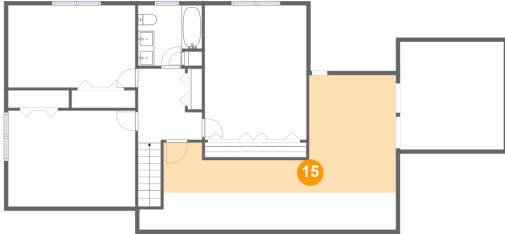


Dimensions: 15'8" x 11'10"
Area: 159 sq. ft
Counted as living area: Yes

Heated: Yes
Finished: Yes
Enclosed: Yes
Contiguous: Yes
Permitted: Yes
Wet space: No
Addition: No
Conversion: No

24 Appletree Drive, Matawan, Middlesex County, New Jersey, United States, 07747

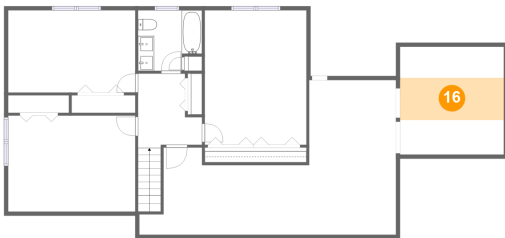
15 Floor 2 - Attic



Dimensions: 28'8" x 19'1"
Area: 238 sq. ft
Counted as living area: No

Heated: No
Finished: No
Enclosed: Yes
Contiguous: Yes
Permitted: Yes
Wet space: No
Addition: No
Conversion: No

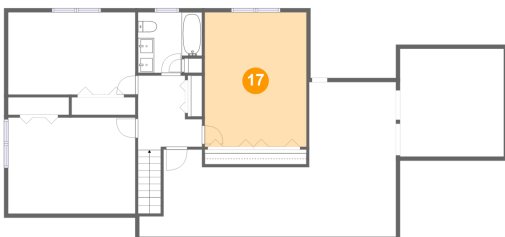
16 Floor 2 - Attic



Dimensions: 12'10" x 13'4"
Area: 67 sq. ft
Counted as living area: No

Heated: No
Finished: No
Enclosed: Yes
Contiguous: Yes
Permitted: Yes
Wet space: No
Addition: No
Conversion: No

17 Floor 2 - Bedroom

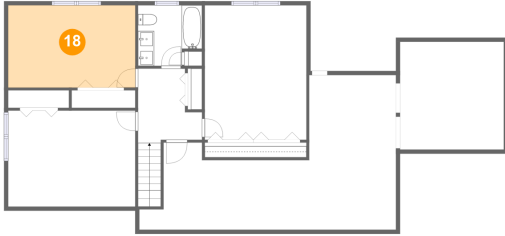


Dimensions: 12'7" x 16'7"
Area: 208 sq. ft
Counted as living area: Yes

Heated: Yes
Finished: Yes
Enclosed: Yes
Contiguous: Yes
Permitted: Yes
Wet space: No
Addition: No
Conversion: No

24 Appletree Drive, Matawan, Middlesex County, New Jersey, United States, 07747

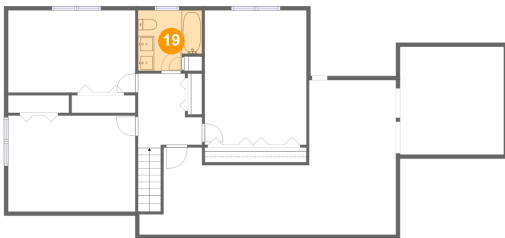
18 Floor 2 - Bedroom



Dimensions: 14'8" x 10'2"
Area: 159 sq. ft
Counted as living area: Yes

Heated: Yes
Finished: Yes
Enclosed: Yes
Contiguous: Yes
Permitted: Yes
Wet space: No
Addition: No
Conversion: No

19 Floor 2 - Bath



Dimensions: 7'11" x 7'6"
Area: 54 sq. ft
Counted as living area: Yes

Heated: Yes
Finished: Yes
Enclosed: Yes
Contiguous: Yes
Permitted: Yes
Wet space: Yes
Addition: No
Conversion: No