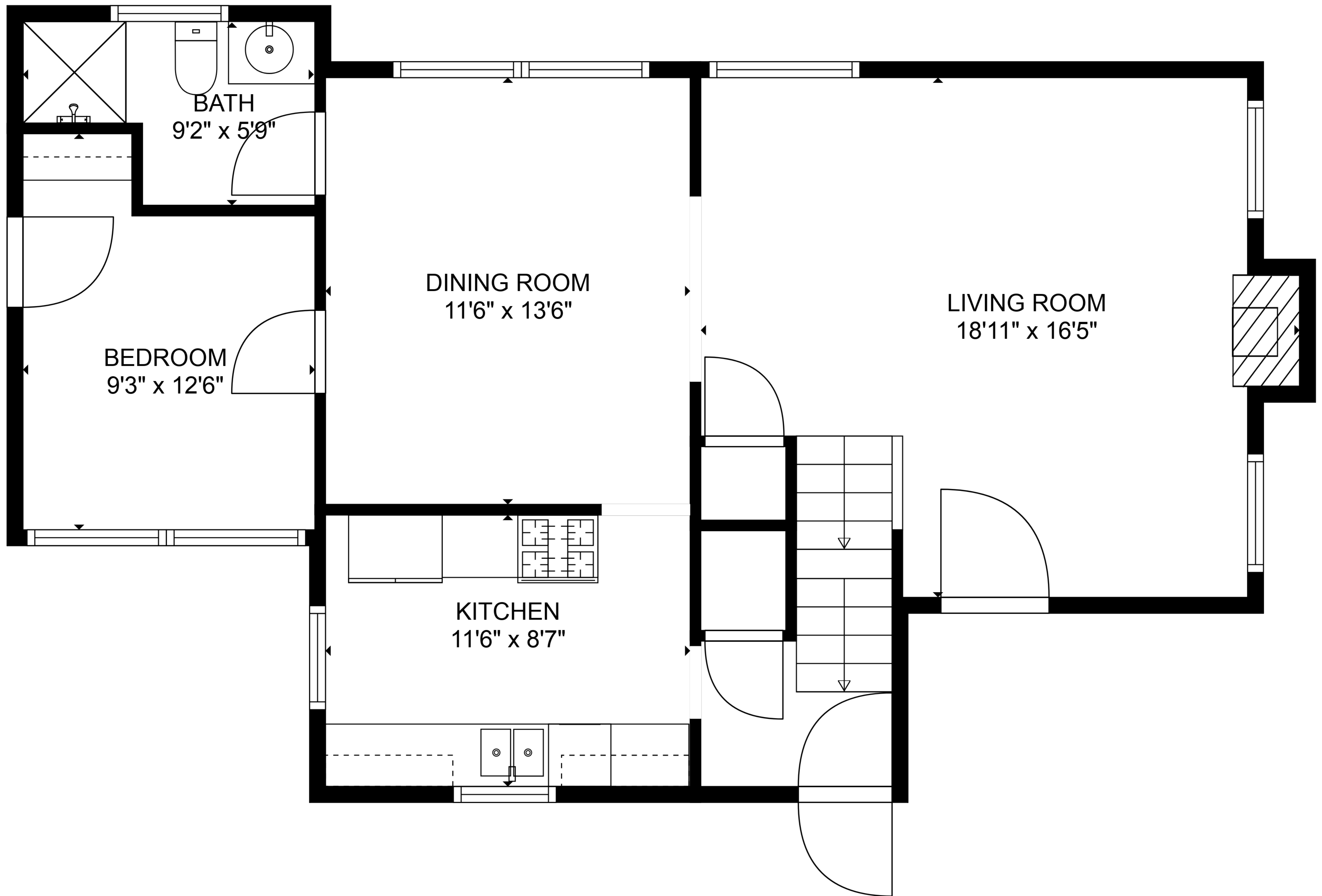


BASEMENT
27'11" x 16'5"

TOTAL: 1324 sq. ft

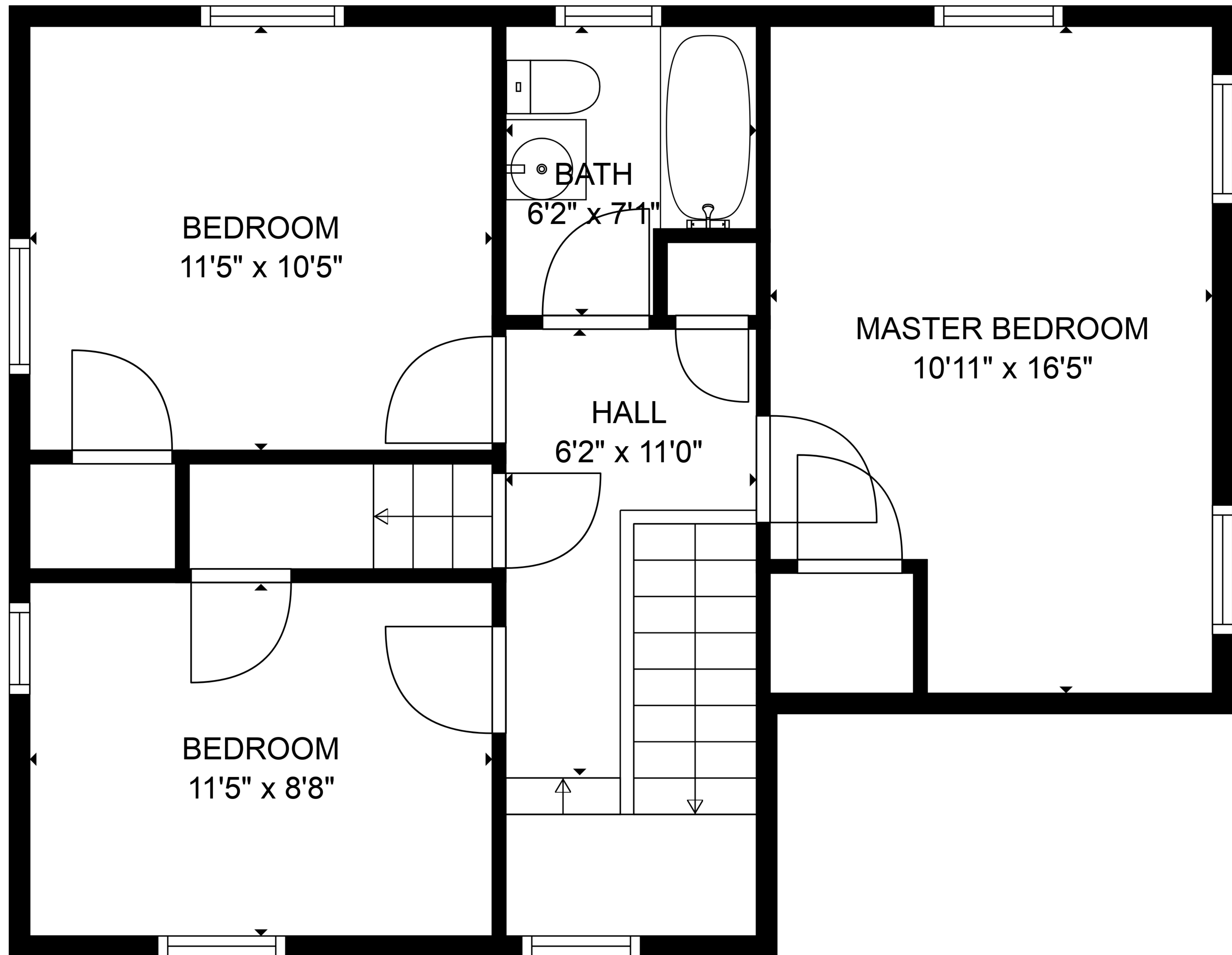
BELOW GROUND: 0 sq. ft, FLOOR 2: 739 sq. ft, FLOOR 3: 585 sq. ft, FLOOR 4: 0 sq. ft
EXCLUDED AREAS: BASEMENT: 458 sq. ft, FIREPLACE: 7 sq. ft, LOW CEILING: 492 sq. ft



TOTAL: 1324 sq. ft

BELOW GROUND: 0 sq. ft, FLOOR 2: 739 sq. ft, FLOOR 3: 585 sq. ft, FLOOR 4: 0 sq. ft
EXCLUDED AREAS: BASEMENT: 458 sq. ft, FIREPLACE: 7 sq. ft, LOW CEILING: 492 sq. ft

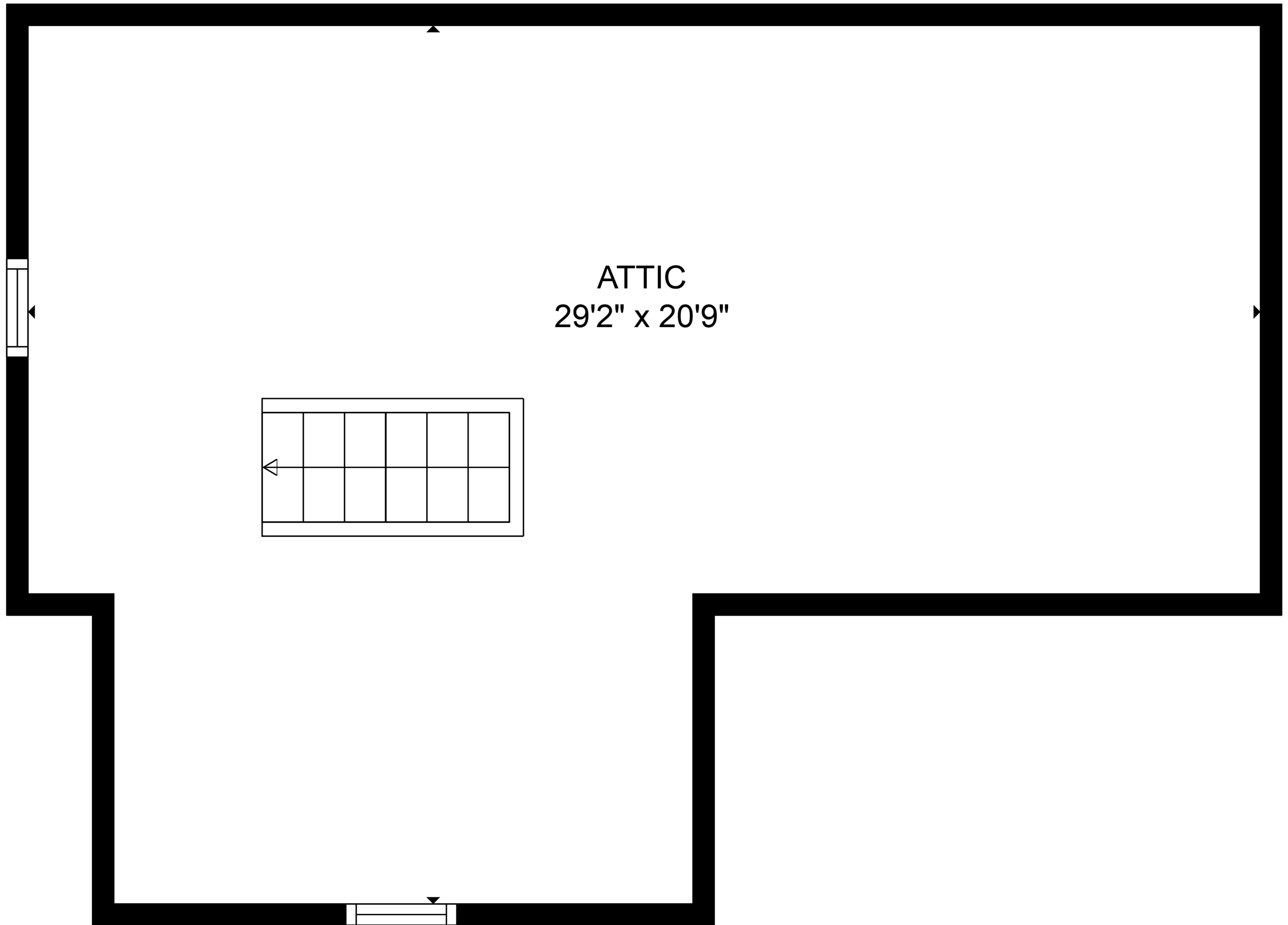
FLOOR PLAN CREATED BY CUBICASA APP. MEASUREMENTS DEEMED HIGHLY RELIABLE BUT NOT GUARANTEED.



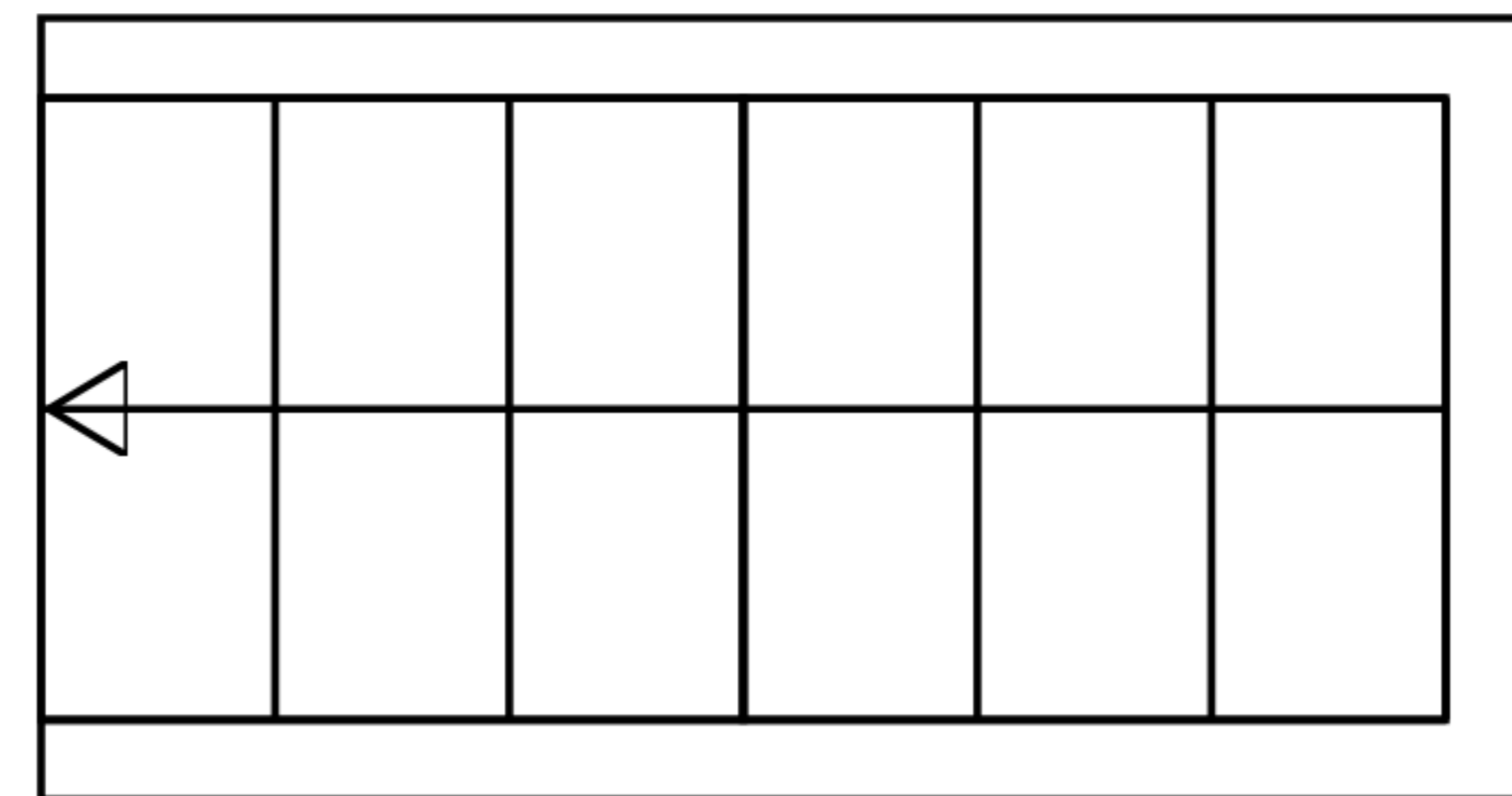
TOTAL: 1324 sq. ft

BELOW GROUND: 0 sq. ft, FLOOR 2: 739 sq. ft, FLOOR 3: 585 sq. ft, FLOOR 4: 0 sq. ft
EXCLUDED AREAS: BASEMENT: 458 sq. ft, FIREPLACE: 7 sq. ft, LOW CEILING: 492 sq. ft

FLOOR PLAN CREATED BY CUBICASA APP. MEASUREMENTS DEEMED HIGHLY RELIABLE BUT NOT GUARANTEED.



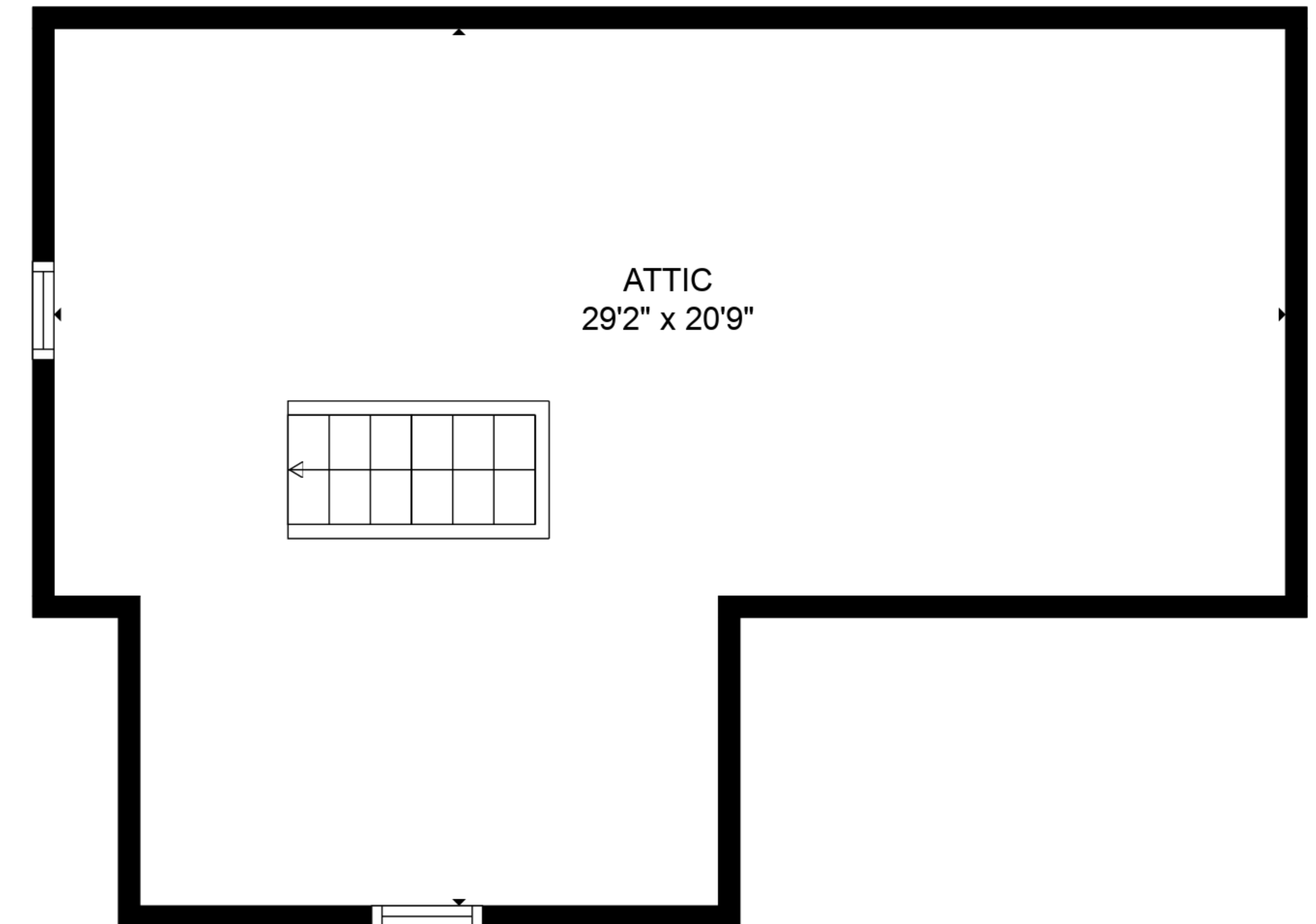
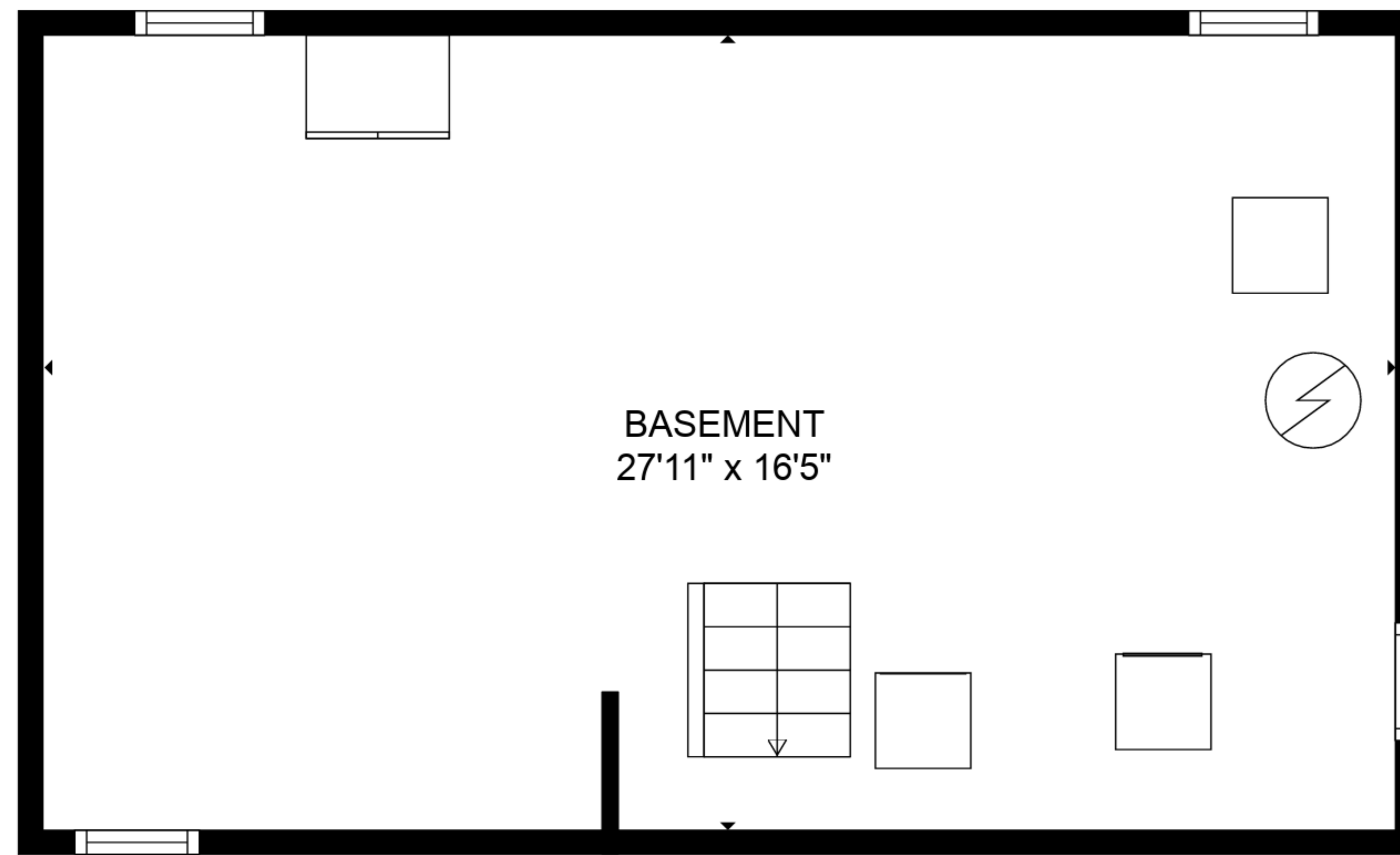
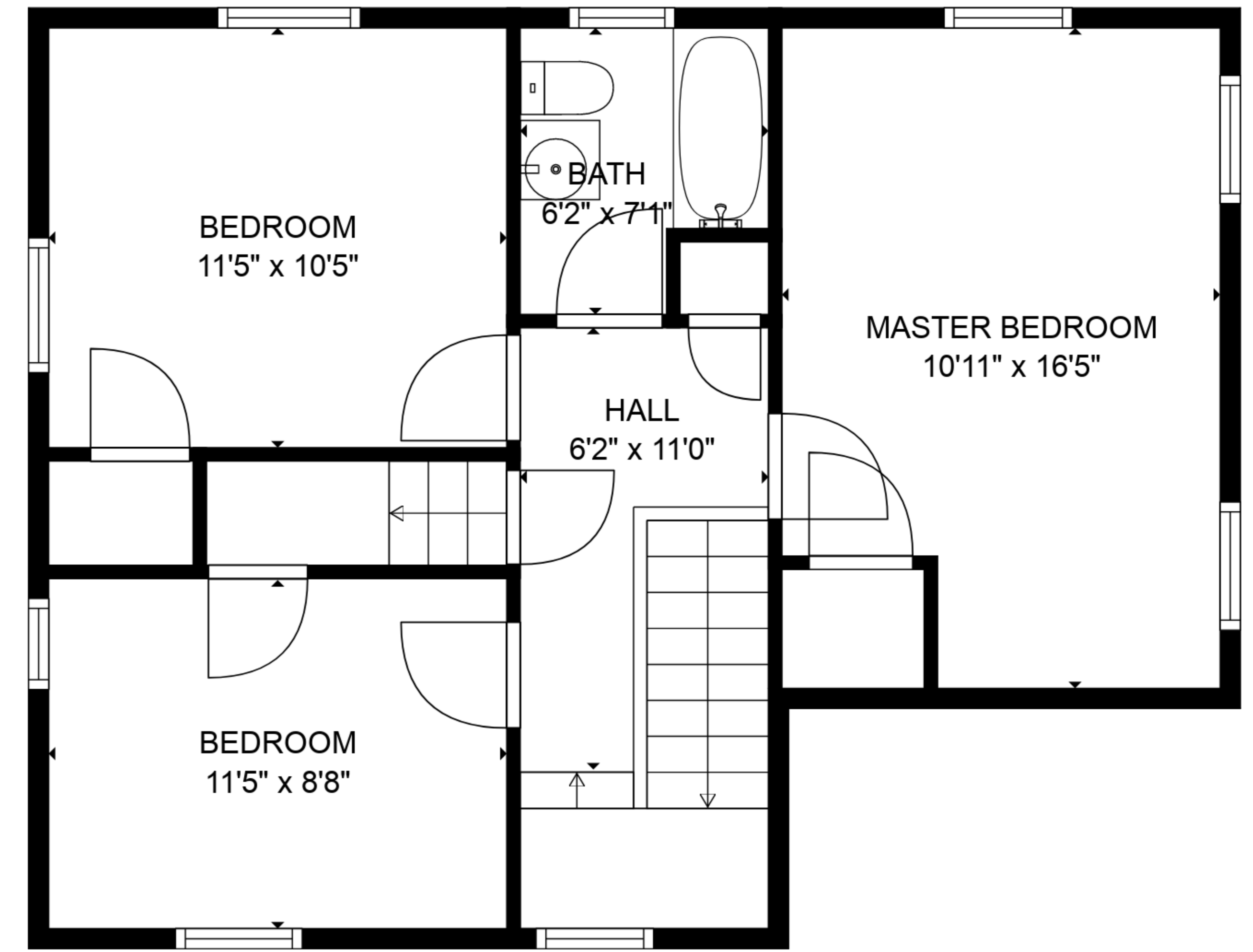
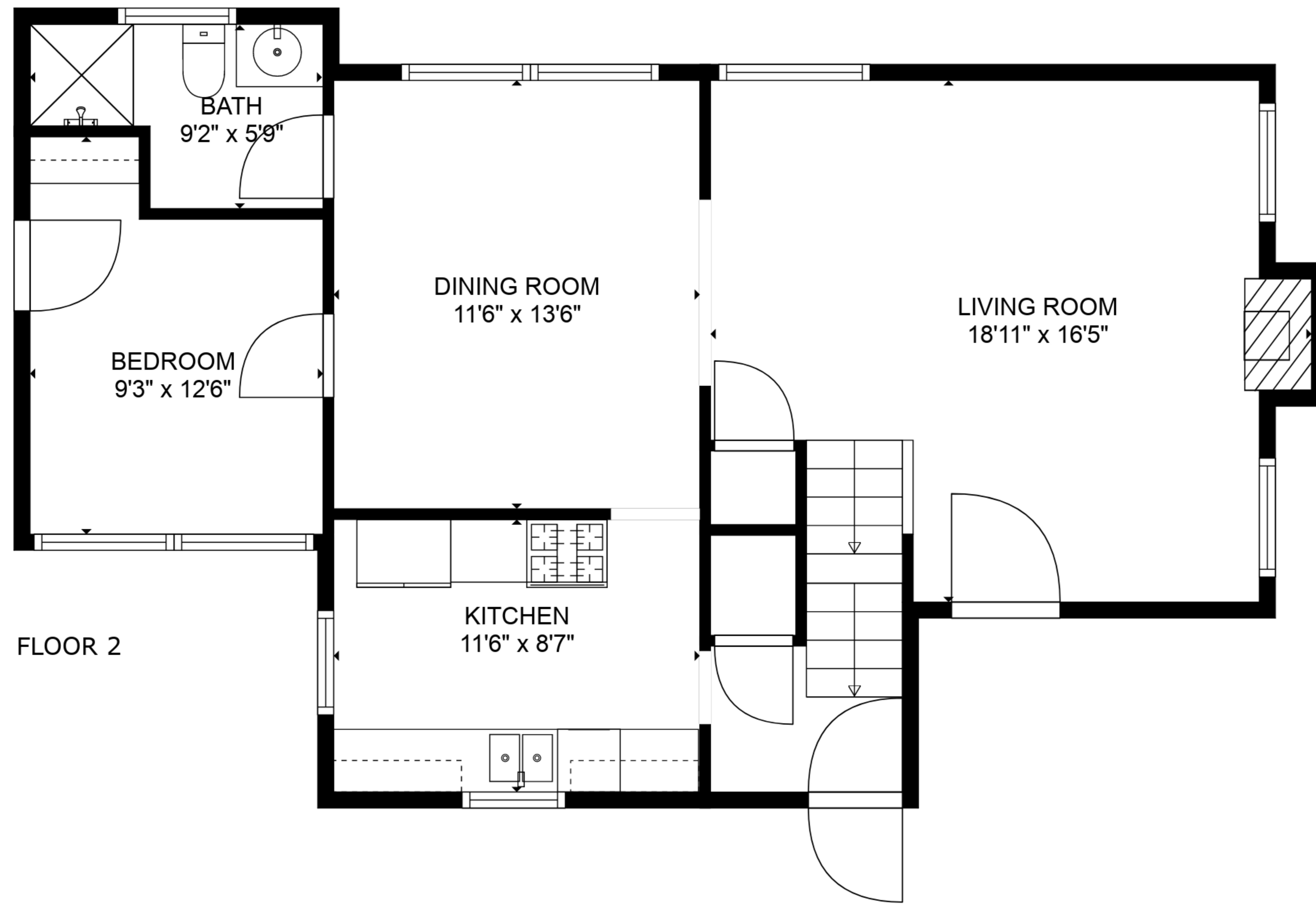
ATTIC
29'2" x 20'9"



TOTAL: 1324 sq. ft

BELOW GROUND: 0 sq. ft, FLOOR 2: 739 sq. ft, FLOOR 3: 585 sq. ft, FLOOR 4: 0 sq. ft
EXCLUDED AREAS: BASEMENT: 458 sq. ft, FIREPLACE: 7 sq. ft, LOW CEILING: 492 sq. ft

FLOOR PLAN CREATED BY CUBICASA APP. MEASUREMENTS DEEMED HIGHLY RELIABLE BUT NOT GUARANTEED.



TOTAL: 1324 sq. ft
 BELOW GROUND: 0 sq. ft, FLOOR 2: 739 sq. ft, FLOOR 3: 585 sq. ft, FLOOR 4: 0 sq. ft
 EXCLUDED AREAS: BASEMENT: 458 sq. ft, FIREPLACE: 7 sq. ft, LOW CEILING: 492 sq. ft