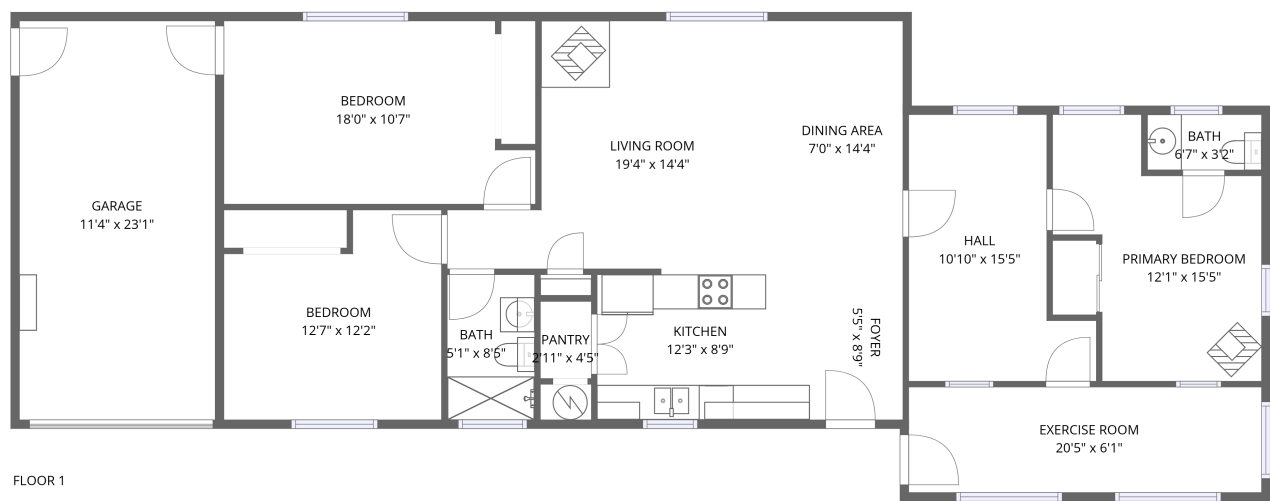


Home data report

655 Frost Rd,Edgewood,NM,US




Total Area: 1356 sq. ft

Floor 1: 1356 sq. ft

Excluded: Garage 261 sq. ft, Walls: 111 sq. ft

Property summary

 1 Floors

 3 Bedrooms

 1 Bathrooms

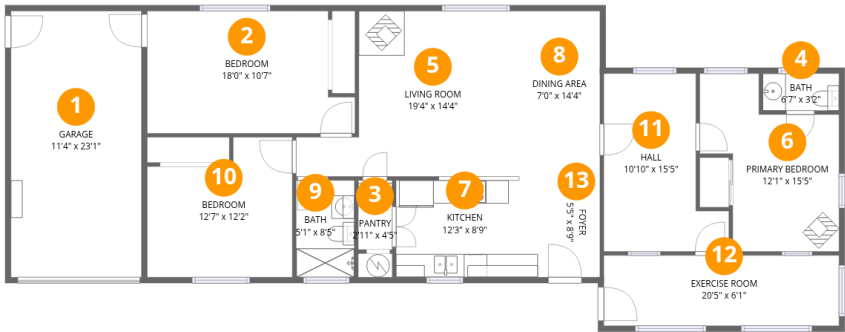
655 Frost Rd,Edgewood,NM,US

 **1**
Half baths

 **1**
Garages

Home data report

655 Frost Rd,Edgewood,NM,US



Room dimensions

Floor 1 Total:1356sqft Excluded: 261sqft

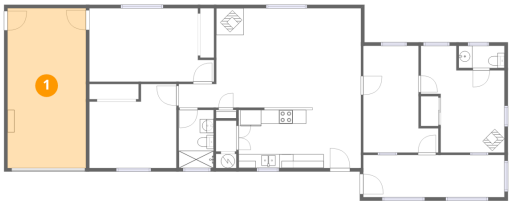
#		Dimensions	sqft	Counted as living area
1	Garage	11'4" x 23'1"	261 sq. ft	No
2	Bedroom	18'0" x 10'7"	173 sq. ft	Yes
3	Pantry	2'11" x 4'5"	13 sq. ft	Yes
4	Bath	6'7" x 3'2"	21 sq. ft	Yes
5	Living Room	19'4" x 14'4"	218 sq. ft	Yes
6	Primary Bedroom	12'1" x 15'5"	137 sq. ft	Yes
7	Kitchen	12'3" x 8'9"	106 sq. ft	Yes
8	Dining Area	7'0" x 14'4"	100 sq. ft	Yes
9	Bath	5'1" x 8'5"	42 sq. ft	Yes
10	Bedroom	12'7" x 12'2"	134 sq. ft	Yes
11	Hall	10'10" x 15'5"	133 sq. ft	Yes

Home data report

655 Frost Rd,Edgewood,NM,US

#		Dimensions	sqft	Counted as living area
12	Exercise Room	20'5" x 6'1"	124 sq. ft	Yes
13	Foyer	5'5" x 8'9"	47 sq. ft	Yes

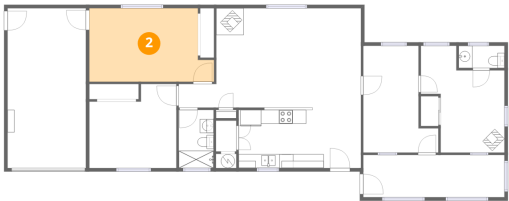
1 Floor 1 - Garage



Dimensions: 11'4" x 23'1"
Area: 261 sq. ft
Counted as living area: No

Heated: No
Finished: No
Enclosed: Yes
Contiguous: Yes
Permitted: Yes
Wet space: No
Addition: No
Conversion: No

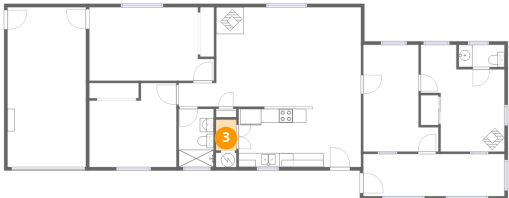
2 Floor 1 - Bedroom



Dimensions: 18'0" x 10'7"
Area: 173 sq. ft
Counted as living area: Yes

Heated: Yes
Finished: Yes
Enclosed: Yes
Contiguous: Yes
Permitted: Yes
Wet space: No
Addition: No
Conversion: No

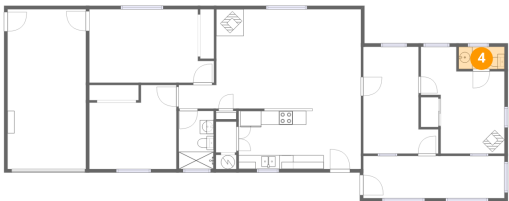
3 Floor 1 - Pantry



Dimensions: 2'11" x 4'5"
Area: 13 sq. ft
Counted as living area: Yes

Heated: Yes
Finished: Yes
Enclosed: Yes
Contiguous: Yes
Permitted: Yes
Wet space: No
Addition: No
Conversion: No

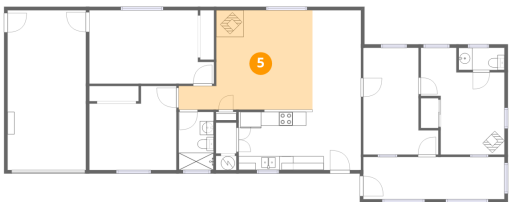
4 Floor 1 - Bath



Dimensions: 6'7" x 3'2"
Area: 21 sq. ft
Counted as living area: Yes

Heated: Yes
Finished: Yes
Enclosed: Yes
Contiguous: Yes
Permitted: Yes
Wet space: Yes
Addition: No
Conversion: No

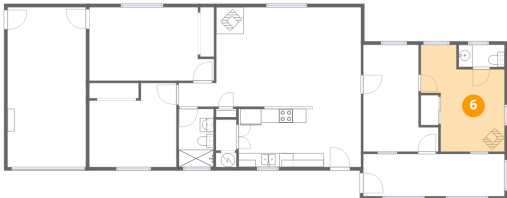
5 Floor 1 - Living Room



Dimensions: 19'4" x 14'4"
Area: 218 sq. ft
Counted as living area: Yes

Heated: Yes
Finished: Yes
Enclosed: Yes
Contiguous: Yes
Permitted: Yes
Wet space: No
Addition: No
Conversion: No

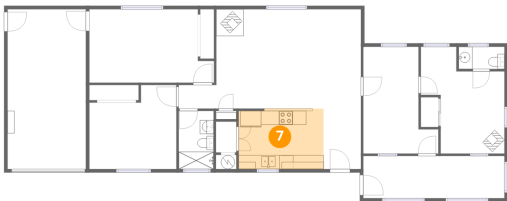
6 Floor 1 - Primary Bedroom



Dimensions: 12'1" x 15'5"
Area: 137 sq. ft
Counted as living area: Yes

Heated: Yes
Finished: Yes
Enclosed: Yes
Contiguous: Yes
Permitted: Yes
Wet space: No
Addition: No
Conversion: No

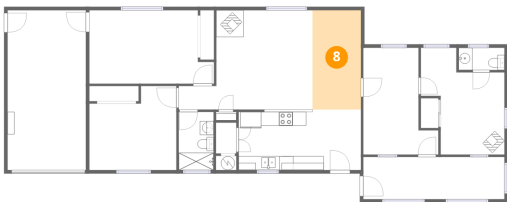
7 Floor 1 - Kitchen



Dimensions: 12'3" x 8'9"
Area: 106 sq. ft
Counted as living area: Yes

Heated: Yes
Finished: Yes
Enclosed: Yes
Contiguous: Yes
Permitted: Yes
Wet space: No
Addition: No
Conversion: No

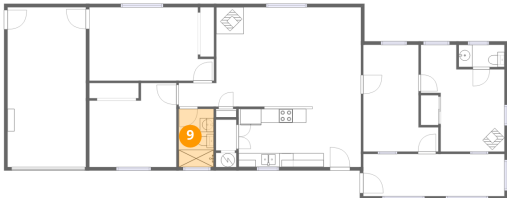
8 Floor 1 - Dining Area



Dimensions: 7'0" x 14'4"
Area: 100 sq. ft
Counted as living area: Yes

Heated: Yes
Finished: Yes
Enclosed: Yes
Contiguous: Yes
Permitted: Yes
Wet space: No
Addition: No
Conversion: No

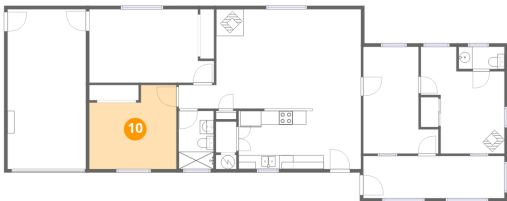
9 Floor 1 - Bath



Dimensions: 5'1" x 8'5"
Area: 42 sq. ft
Counted as living area: Yes

Heated: Yes
Finished: Yes
Enclosed: Yes
Contiguous: Yes
Permitted: Yes
Wet space: Yes
Addition: No
Conversion: No

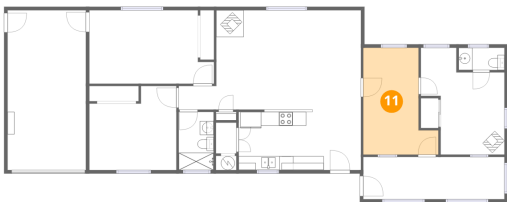
10 Floor 1 - Bedroom



Dimensions: 12'7" x 12'2"
Area: 134 sq. ft
Counted as living area: Yes

Heated: Yes
Finished: Yes
Enclosed: Yes
Contiguous: Yes
Permitted: Yes
Wet space: No
Addition: No
Conversion: No

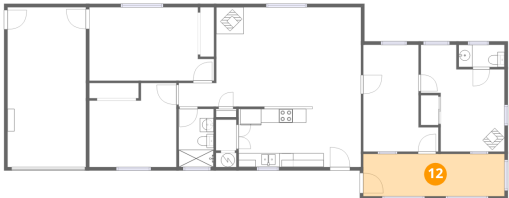
11 Floor 1 - Hall



Dimensions: 10'10" x 15'5"
Area: 133 sq. ft
Counted as living area: Yes

Heated: Yes
Finished: Yes
Enclosed: Yes
Contiguous: Yes
Permitted: Yes
Wet space: No
Addition: No
Conversion: No

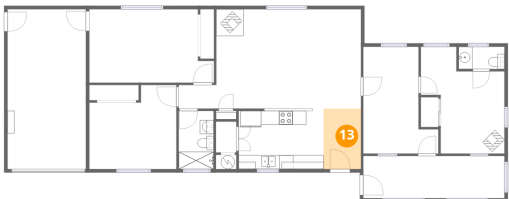
12 Floor 1 - Exercise Room



Dimensions: 20'5" x 6'1"
Area: 124 sq. ft
Counted as living area: Yes

Heated: Yes
Finished: Yes
Enclosed: Yes
Contiguous: Yes
Permitted: Yes
Wet space: No
Addition: No
Conversion: No

13 Floor 1 - Foyer



Dimensions: 5'5" x 8'9"
Area: 47 sq. ft
Counted as living area: Yes

Heated: Yes
Finished: Yes
Enclosed: Yes
Contiguous: Yes
Permitted: Yes
Wet space: No
Addition: No
Conversion: No