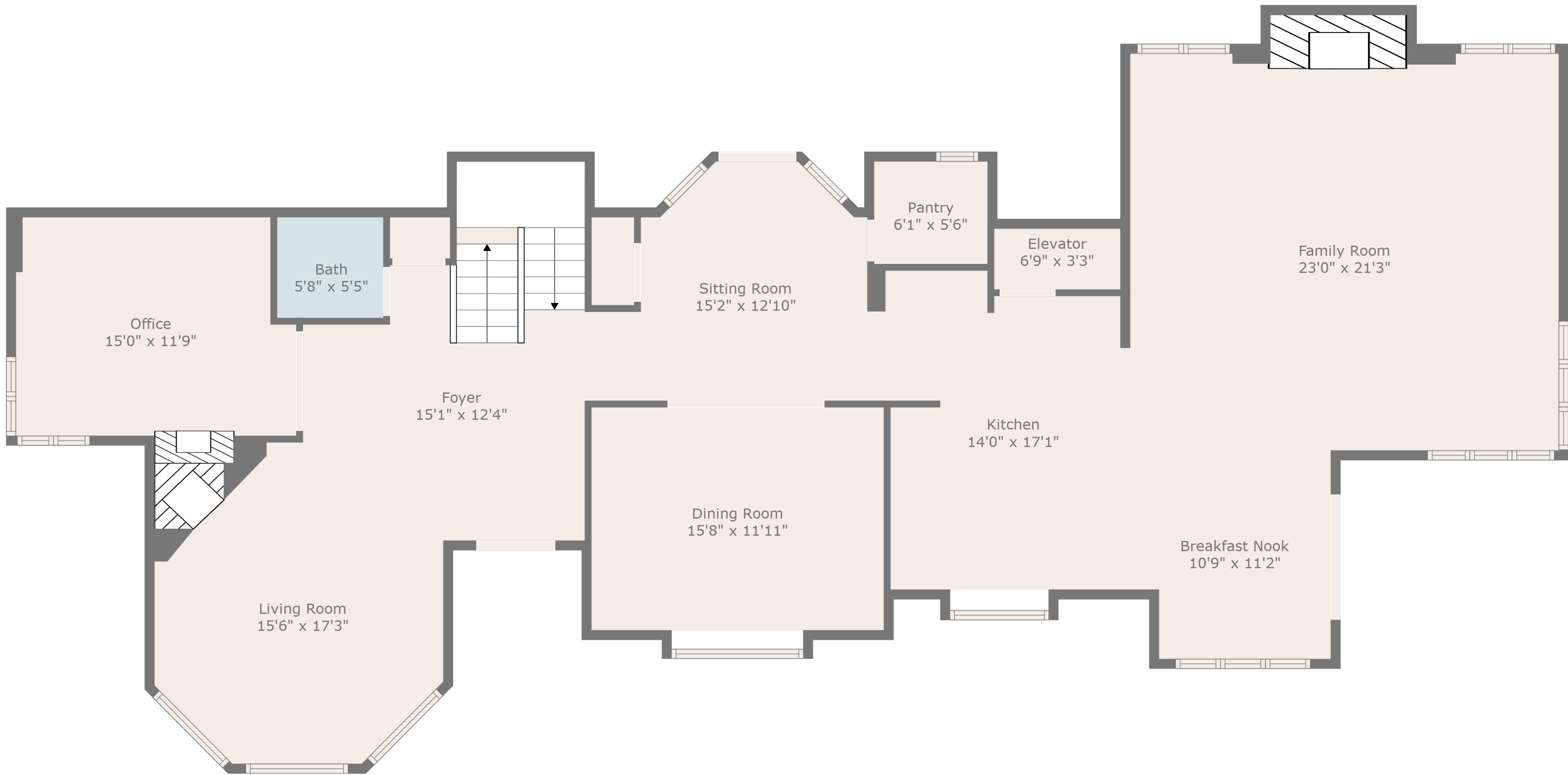




TOTAL: 4914 sq. ft

FLOOR 1: 1145 sq. ft, FLOOR 2: 1920 sq. ft, FLOOR 3: 597 sq. ft, FLOOR 4: 768 sq. ft, FLOOR 5: 484 sq. ft
 EXCLUDED AREAS: ELECTRICAL ROOM: 114 sq. ft, ELEVATOR: 66 sq. ft, GARAGE: 1008 sq. ft,
 BAY WINDOW: 22 sq. ft, LOW CEILING: 147 sq. ft, OPEN TO BELOW: 313 sq. ft

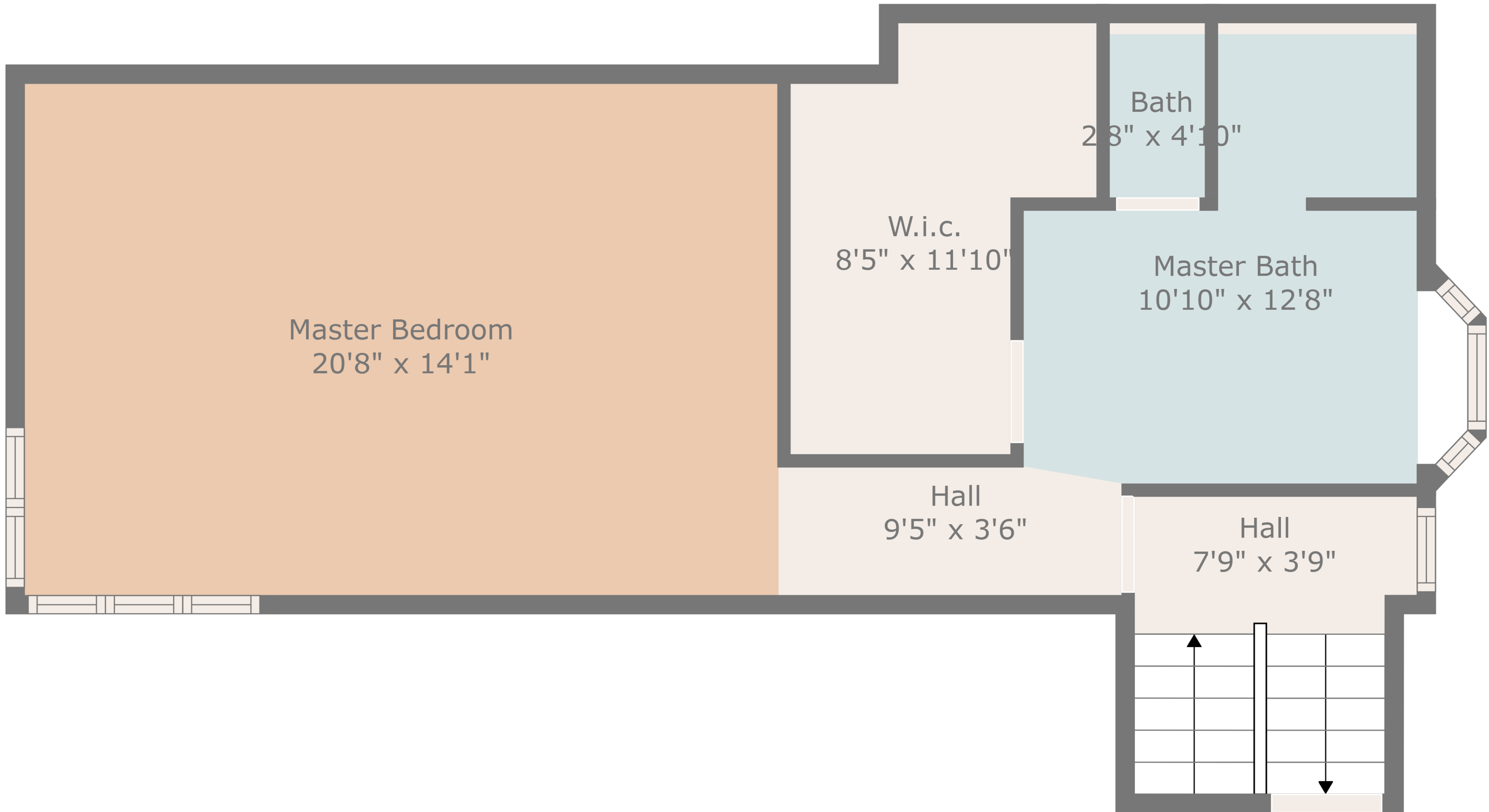




TOTAL: 4914 sq. ft

FLOOR 1: 1145 sq. ft, FLOOR 2: 1920 sq. ft, FLOOR 3: 597 sq. ft, FLOOR 4: 768 sq. ft, FLOOR 5: 484 sq. ft
 EXCLUDED AREAS: ELECTRICAL ROOM: 114 sq. ft, ELEVATOR: 66 sq. ft, GARAGE: 1008 sq. ft,
 BAY WINDOW: 22 sq. ft, LOW CEILING: 147 sq. ft, OPEN TO BELOW: 313 sq. ft





Master Bedroom
20'8" x 14'1"

W.i.c.
8'5" x 11'10"

Bath
2'8" x 4'10"

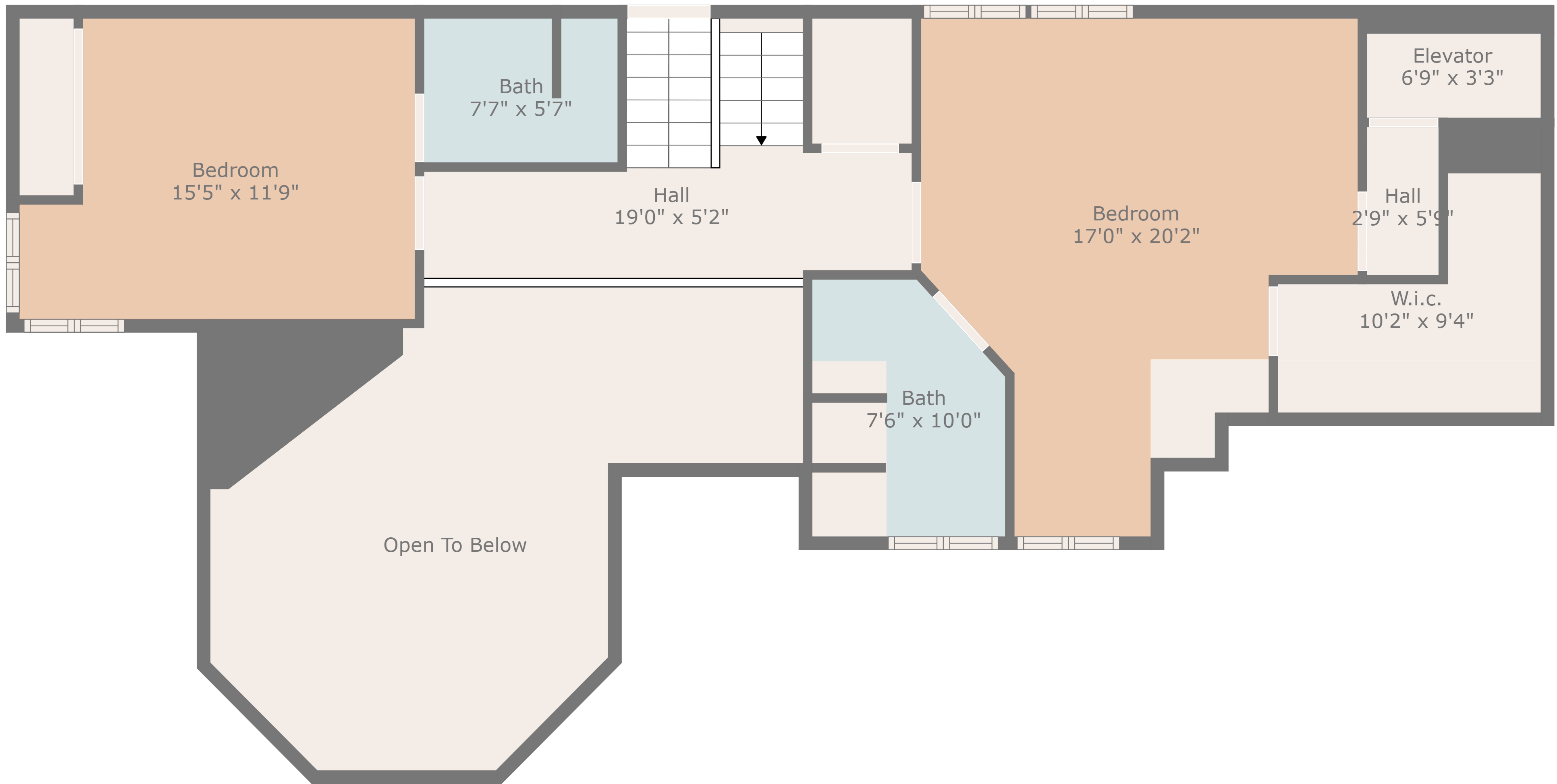
Master Bath
10'10" x 12'8"

Hall
9'5" x 3'6"

Hall
7'9" x 3'9"



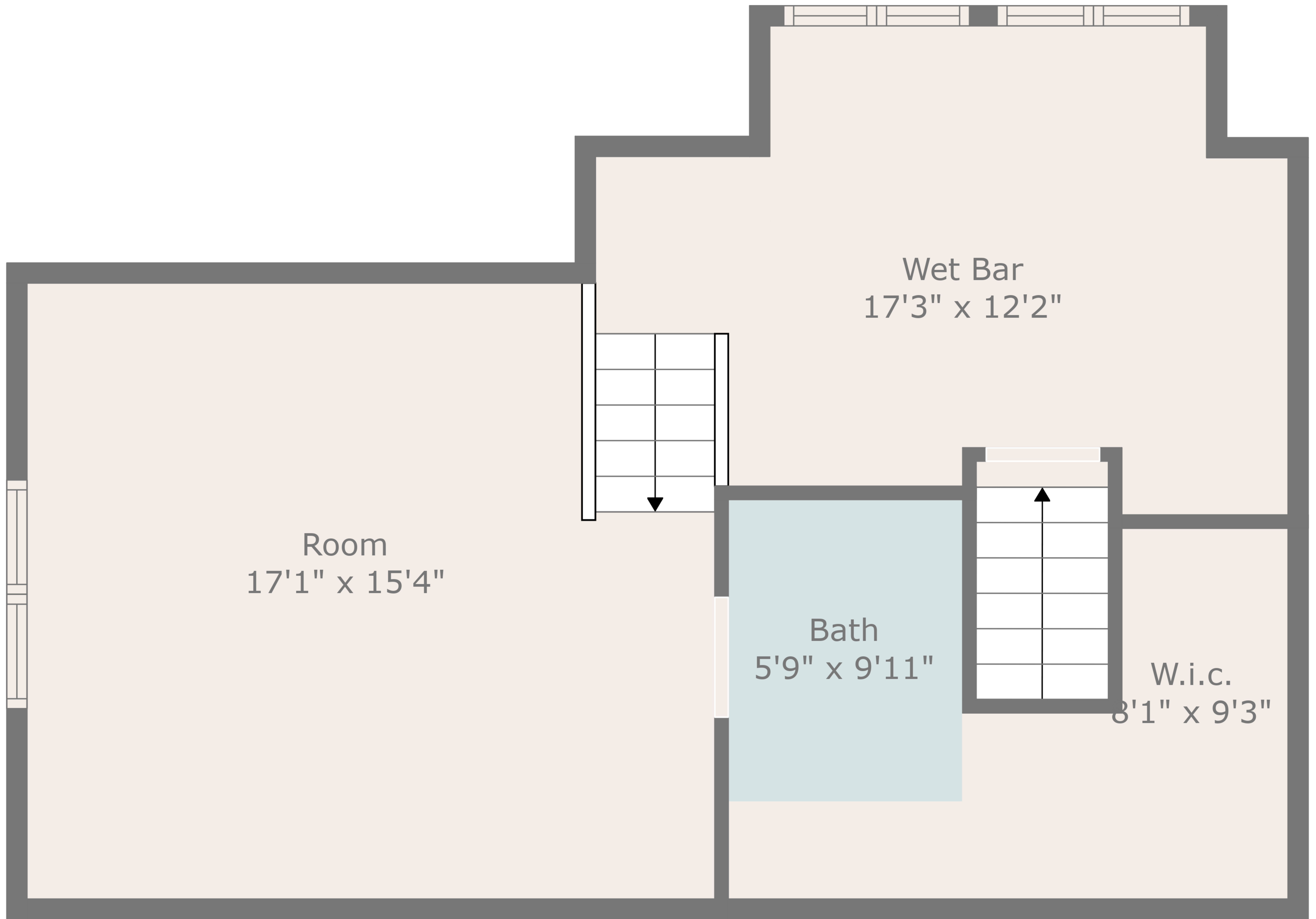
TOTAL: 4914 sq. ft
 FLOOR 1: 1145 sq. ft, FLOOR 2: 1920 sq. ft, FLOOR 3: 597 sq. ft, FLOOR 4: 768 sq. ft, FLOOR 5: 484 sq. ft
 EXCLUDED AREAS: ELECTRICAL ROOM: 114 sq. ft, ELEVATOR: 66 sq. ft, GARAGE: 1008 sq. ft,
 BAY WINDOW: 22 sq. ft, LOW CEILING: 147 sq. ft, OPEN TO BELOW: 313 sq. ft



TOTAL: 4914 sq. ft

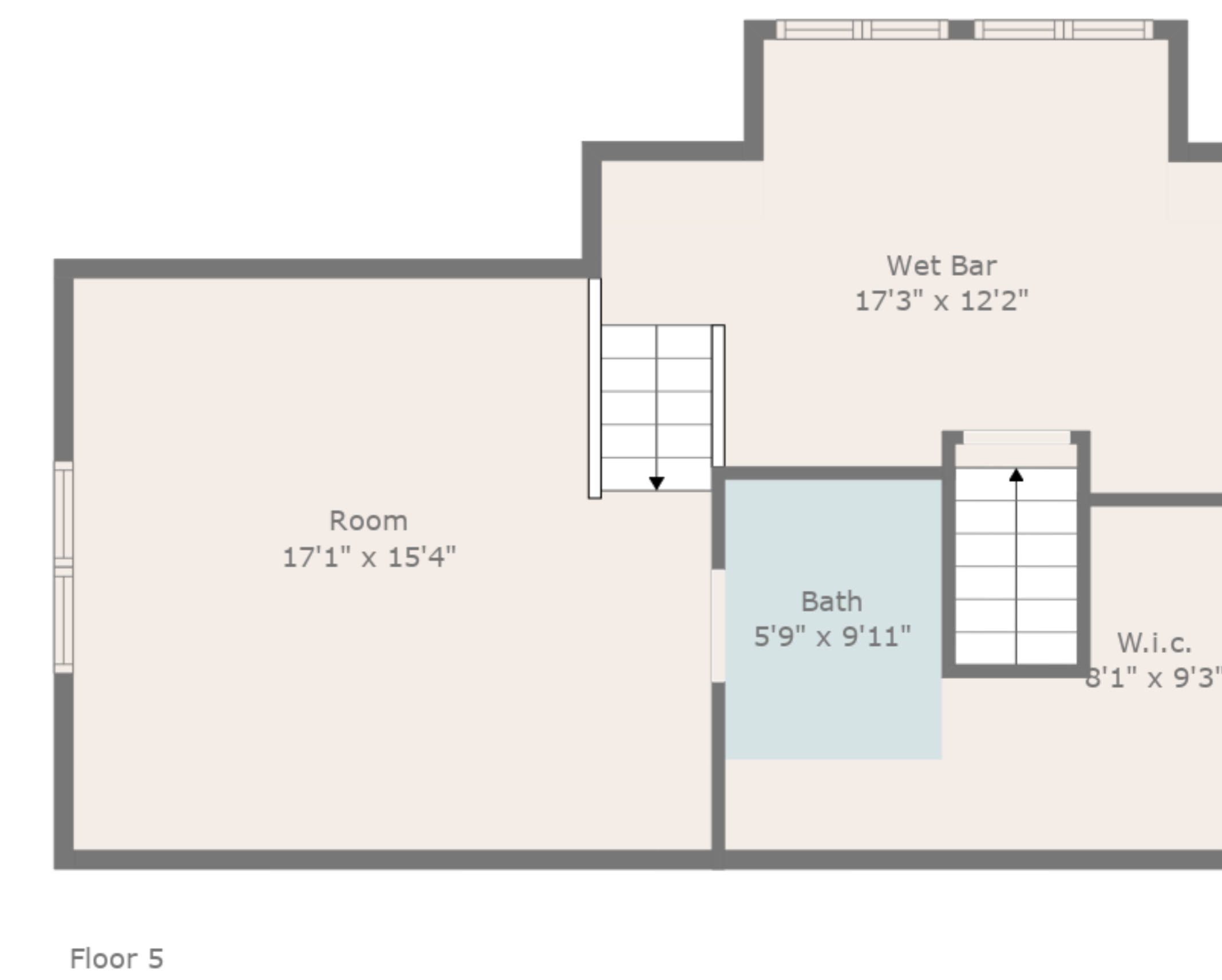
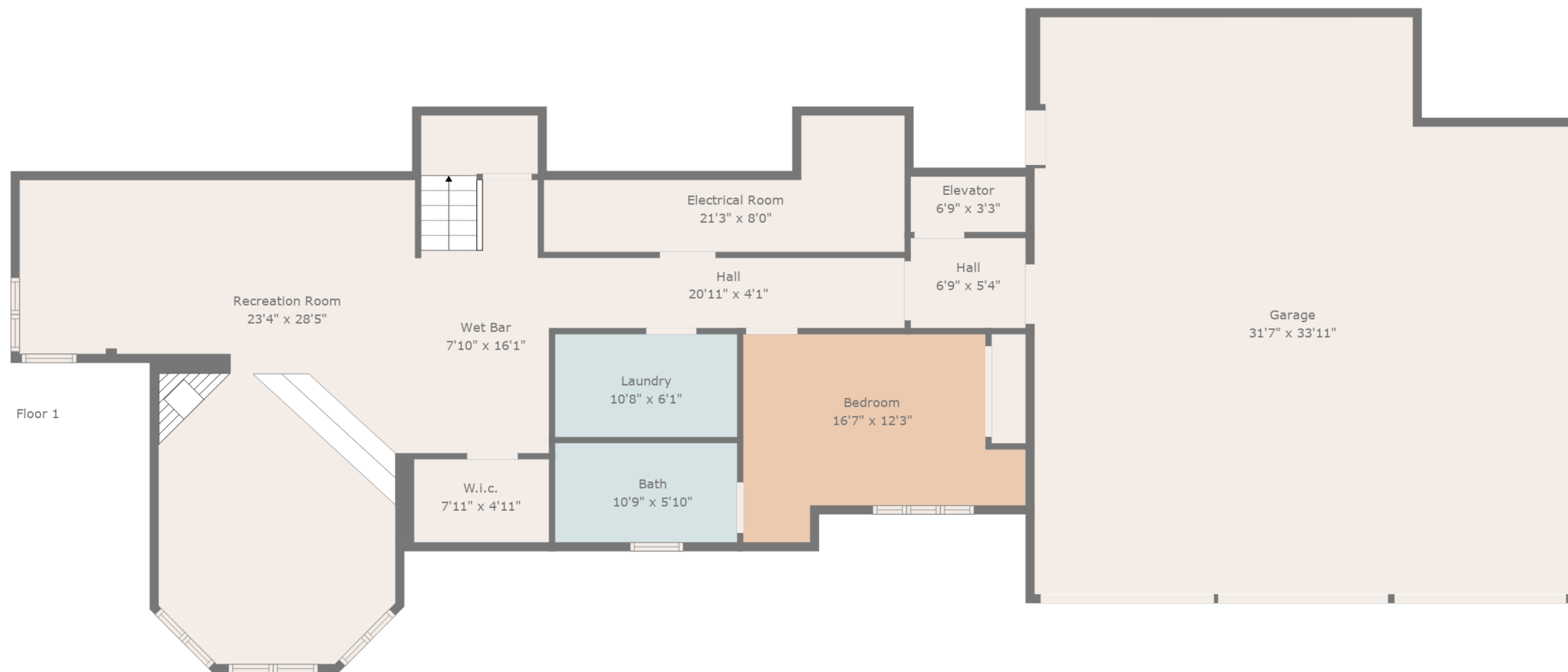
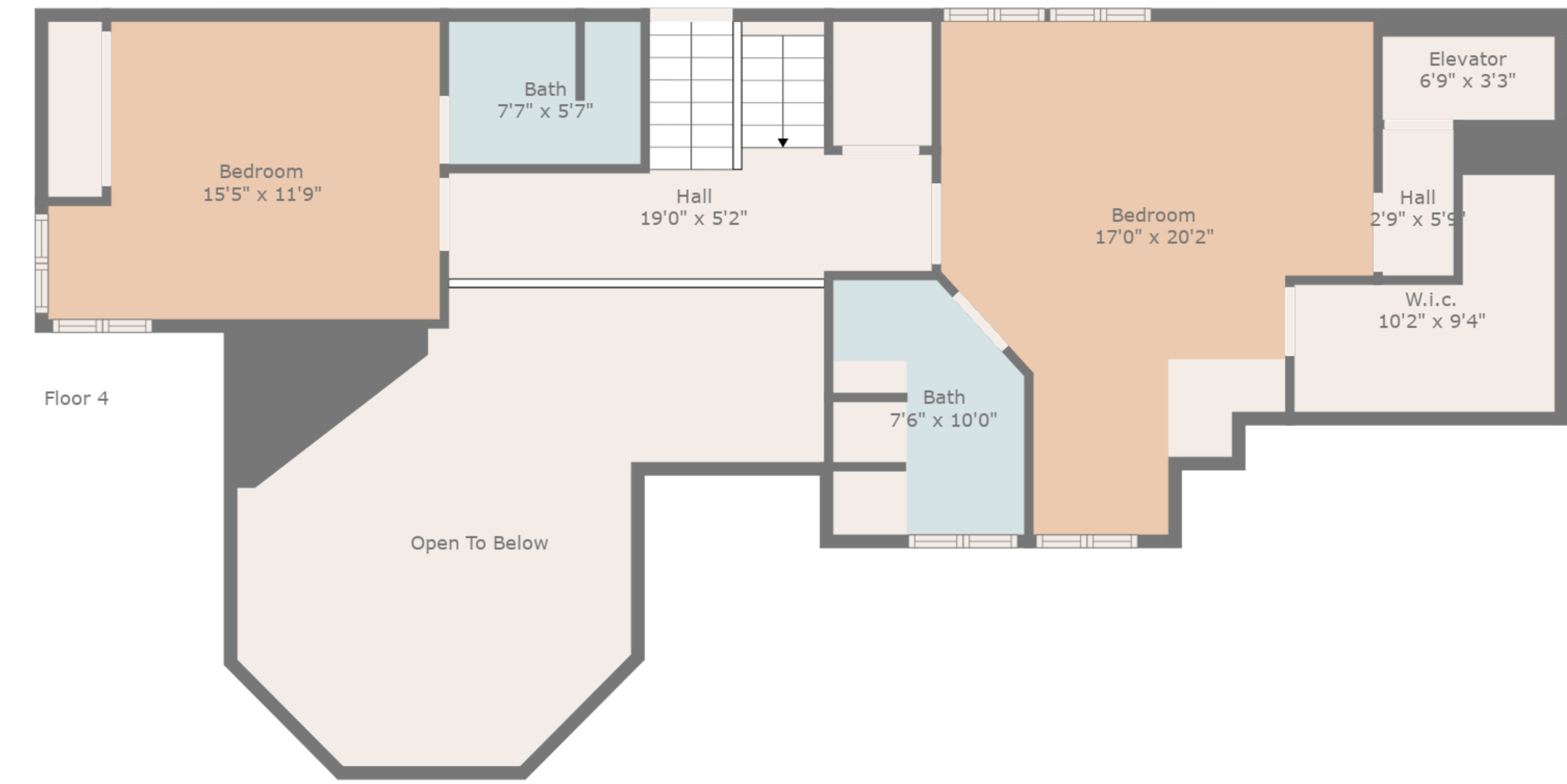
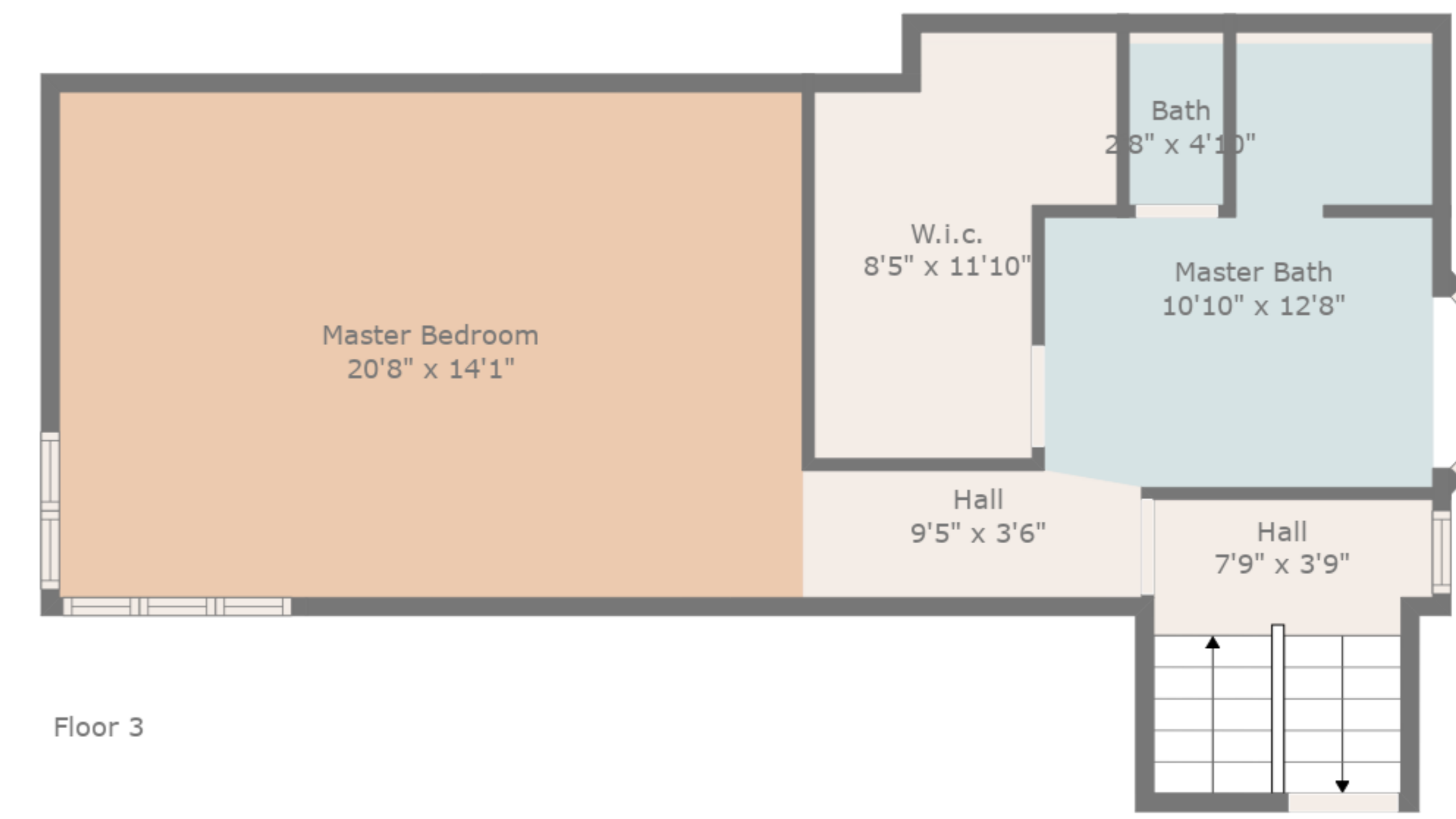
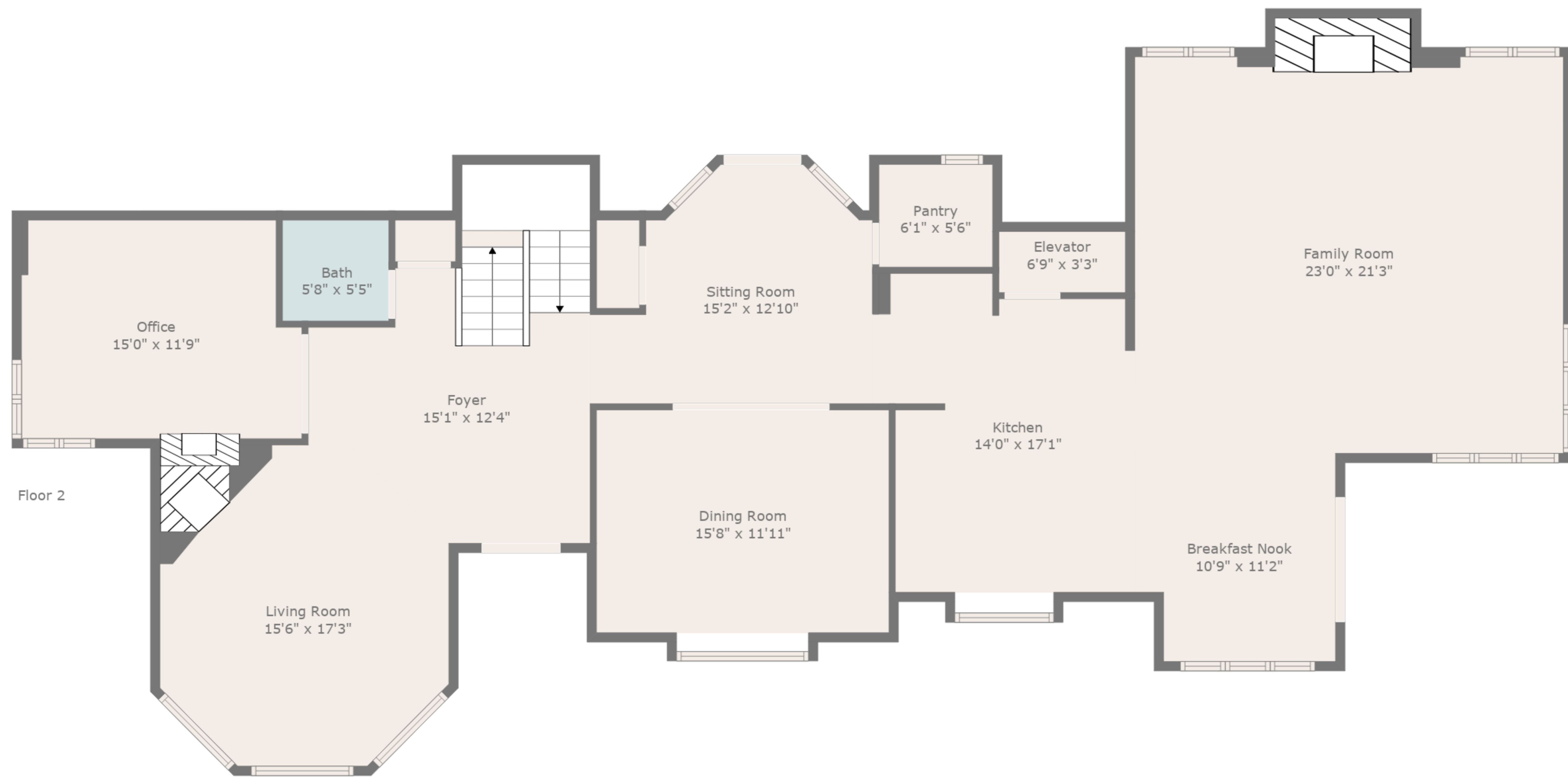
FLOOR 1: 1145 sq. ft, FLOOR 2: 1920 sq. ft, FLOOR 3: 597 sq. ft, FLOOR 4: 768 sq. ft, FLOOR 5: 484 sq. ft
 EXCLUDED AREAS: ELECTRICAL ROOM: 114 sq. ft, ELEVATOR: 66 sq. ft, GARAGE: 1008 sq. ft,
 BAY WINDOW: 22 sq. ft, LOW CEILING: 147 sq. ft, OPEN TO BELOW: 313 sq. ft





TOTAL: 4914 sq. ft

FLOOR 1: 1145 sq. ft, FLOOR 2: 1920 sq. ft, FLOOR 3: 597 sq. ft, FLOOR 4: 768 sq. ft, FLOOR 5: 484 sq. ft
 EXCLUDED AREAS: ELECTRICAL ROOM: 114 sq. ft, ELEVATOR: 66 sq. ft, GARAGE: 1008 sq. ft,
 BAY WINDOW: 22 sq. ft, LOW CEILING: 147 sq. ft, OPEN TO BELOW: 313 sq. ft



TOTAL: 4914 sq. ft

FLOOR 1: 1145 sq. ft, FLOOR 2: 1920 sq. ft, FLOOR 3: 597 sq. ft, FLOOR 4: 768 sq. ft, FLOOR 5: 484 sq. ft
 EXCLUDED AREAS: ELECTRICAL ROOM: 114 sq. ft, ELEVATOR: 66 sq. ft, GARAGE: 1008 sq. ft,
 BAY WINDOW: 22 sq. ft, LOW CEILING: 147 sq. ft, OPEN TO BELOW: 313 sq. ft

