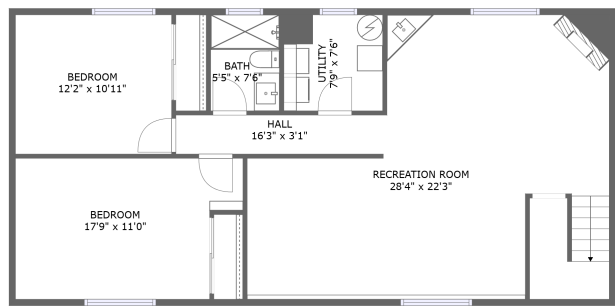
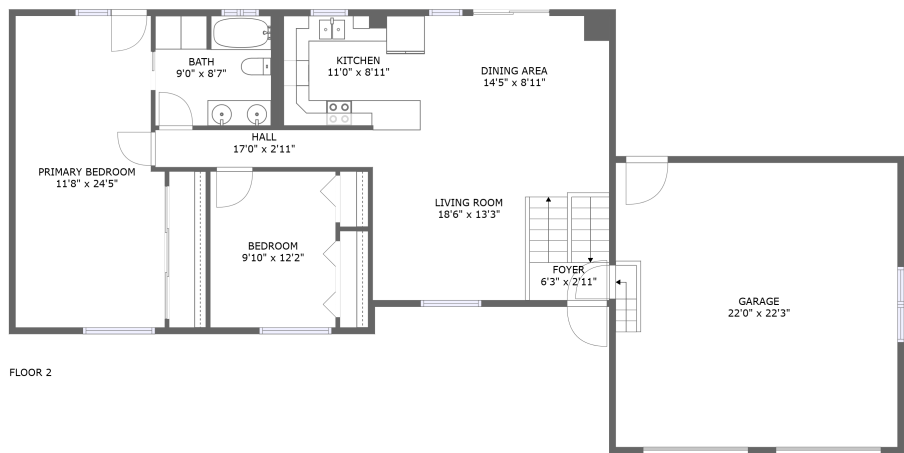


Home report

7610 Santa Marie Dr,Cheyenne,WY,US




Total Area: 2124 sq. ft


Below Ground: 1033 sq. ft, Floor 2: 1091 sq. ft


Excluded: Garage 490 sq. ft, Walls: 181 sq. ft

Property summary

 **2** Floors

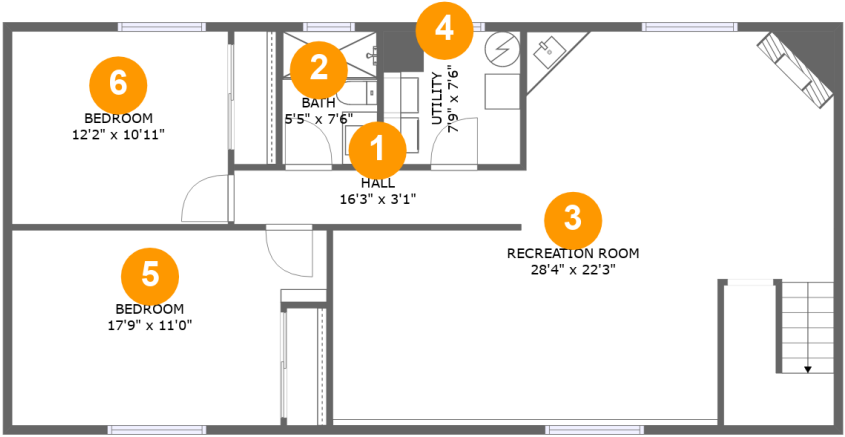
 **4** Bedrooms

 **2** Bathrooms

 **1** Garages

Home report

7610 Santa Marie Dr,Cheyenne,WY,US



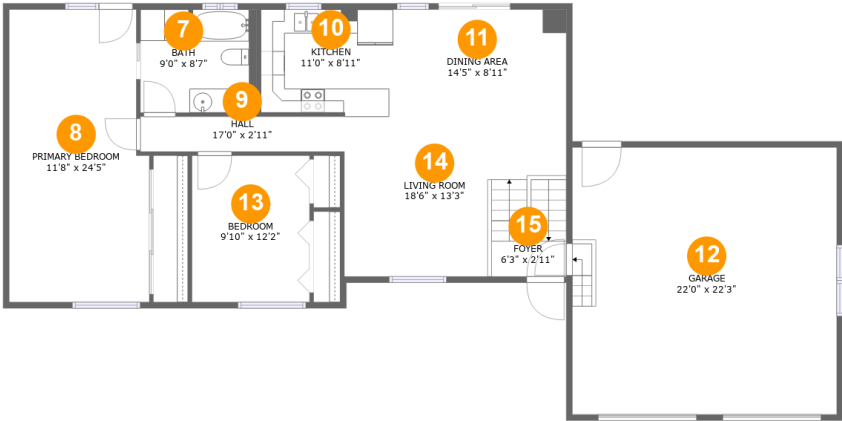
Room dimensions

Floor 1 Below ground Total:1033sqft Excluded: 0sqft

#		Max Dimensions	sqft	Included
1	Hall	16'3" x 3'1"	49 sq. ft	Yes
2	Bath	5'5" x 7'6"	40 sq. ft	Yes
3	Recreation Room	28'4" x 22'3"	505 sq. ft	Yes
4	Utility	7'9" x 7'6"	58 sq. ft	Yes
5	Bedroom	17'9" x 11'0"	178 sq. ft	Yes
6	Bedroom	12'2" x 10'11"	133 sq. ft	Yes

Home report

7610 Santa Marie Dr,Cheyenne,WY,US

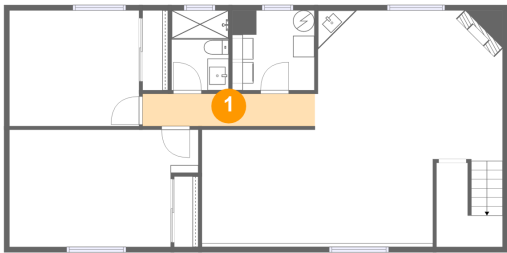


Room dimensions

Floor 2 Total:1091sqft Excluded: 490sqft

#		Max Dimensions	sqft	Included
7	Bath	9'0" x 8'7"	82 sq. ft	Yes
8	Primary Bedroom	11'8" x 24'5"	272 sq. ft	Yes
9	Hall	17'0" x 2'11"	50 sq. ft	Yes
10	Kitchen	11'0" x 8'11"	96 sq. ft	Yes
11	Dining Area	14'5" x 8'11"	129 sq. ft	Yes
12	Garage	22'0" x 22'3"	490 sq. ft	No
13	Bedroom	9'10" x 12'2"	120 sq. ft	Yes
14	Living Room	18'6" x 13'3"	191 sq. ft	Yes
15	Foyer	6'3" x 2'11"	55 sq. ft	Yes

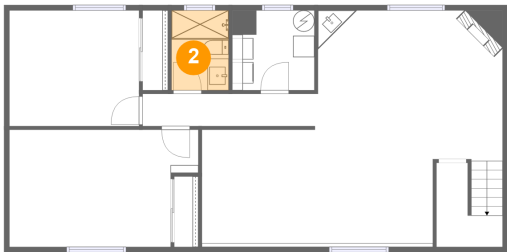
1 Floor 1 - Hall



Max Dimensions: 16'3" x 3'1"
Calculated Area: 49 sq. ft
Included: Yes

Heated: Yes
Finished: Yes
Enclosed: Yes
Contiguous: Yes
Permitted: Yes
Wet space: No
Addition: No
Conversion: No

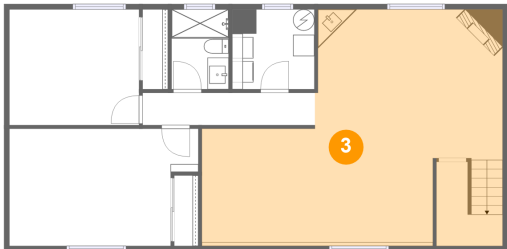
2 Floor 1 - Bath



Max Dimensions: 5'5" x 7'6"
Calculated Area: 40 sq. ft
Included: Yes

Heated: Yes
Finished: Yes
Enclosed: Yes
Contiguous: Yes
Permitted: Yes
Wet space: Yes
Addition: No
Conversion: No

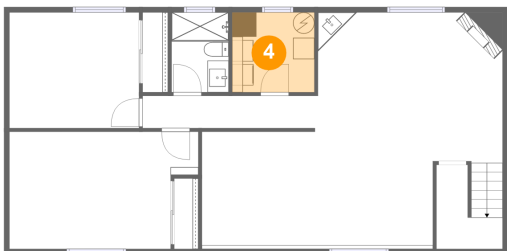
3 Floor 1 - Recreation Room



Max Dimensions: 28'4" x 22'3"
Calculated Area: 505 sq. ft
Included: Yes

Heated: Yes
Finished: Yes
Enclosed: Yes
Contiguous: Yes
Permitted: Yes
Wet space: No
Addition: No
Conversion: No

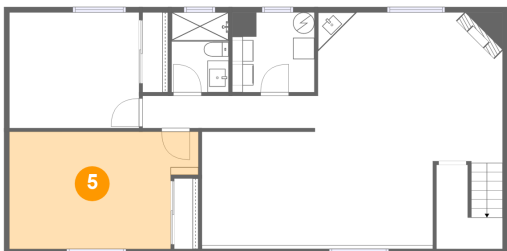
4 Floor 1 - Utility



Max Dimensions: 7'9" x 7'6"
Calculated Area: 58 sq. ft
Included: Yes

Heated: Yes
Finished: Yes
Enclosed: Yes
Contiguous: Yes
Permitted: Yes
Wet space: No
Addition: No
Conversion: No

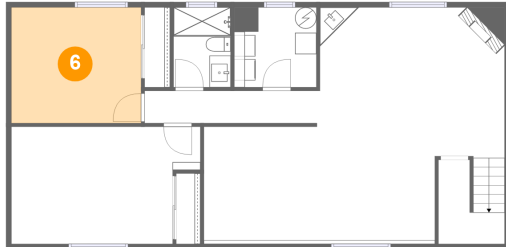
5 Floor 1 - Bedroom



Max Dimensions: 17'9" x 11'0"
Calculated Area: 178 sq. ft
Included: Yes

Heated: Yes
Finished: Yes
Enclosed: Yes
Contiguous: Yes
Permitted: Yes
Wet space: No
Addition: No
Conversion: No

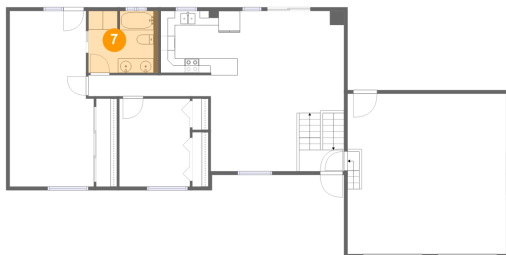
6 Floor 1 - Bedroom



Max Dimensions: 12'2" x 10'11"
Calculated Area: 133 sq. ft
Included: Yes

Heated: Yes
Finished: Yes
Enclosed: Yes
Contiguous: Yes
Permitted: Yes
Wet space: No
Addition: No
Conversion: No

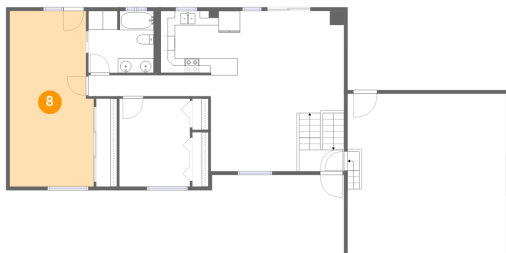
7 Floor 2 - Bath



Max Dimensions: 9'0" x 8'7"
Calculated Area: 82 sq. ft
Included: Yes

Heated: Yes
Finished: Yes
Enclosed: Yes
Contiguous: Yes
Permitted: Yes
Wet space: Yes
Addition: No
Conversion: No

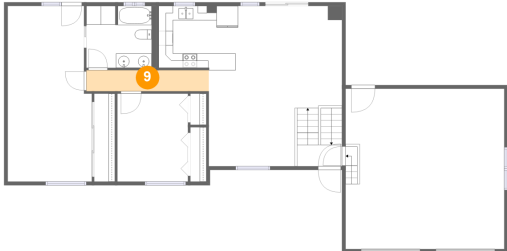
8 Floor 2 - Primary Bedroom



Max Dimensions: 11'8" x 24'5"
Calculated Area: 272 sq. ft
Included: Yes

Heated: Yes
Finished: Yes
Enclosed: Yes
Contiguous: Yes
Permitted: Yes
Wet space: No
Addition: No
Conversion: No

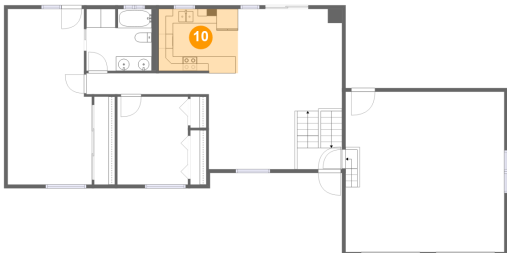
9 Floor 2 - Hall



Max Dimensions: 17'0" x 2'11"
Calculated Area: 50 sq. ft
Included: Yes

Heated: Yes
Finished: Yes
Enclosed: Yes
Contiguous: Yes
Permitted: Yes
Wet space: No
Addition: No
Conversion: No

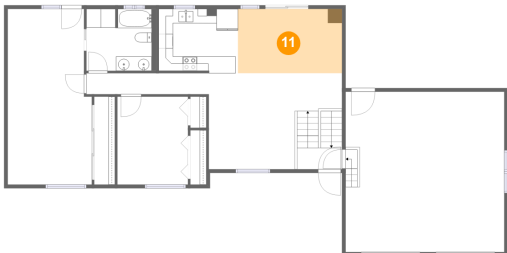
10 Floor 2 - Kitchen



Max Dimensions: 11'0" x 8'11"
Calculated Area: 96 sq. ft
Included: Yes

Heated: Yes
Finished: Yes
Enclosed: Yes
Contiguous: Yes
Permitted: Yes
Wet space: No
Addition: No
Conversion: No

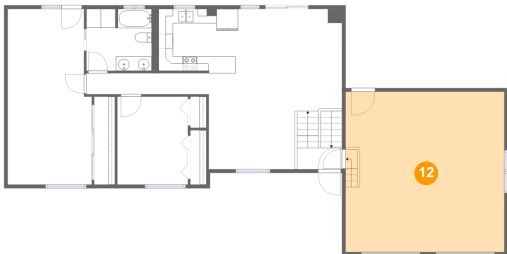
11 Floor 2 - Dining Area



Max Dimensions: 14'5" x 8'11"
Calculated Area: 129 sq. ft
Included: Yes

Heated: Yes
Finished: Yes
Enclosed: Yes
Contiguous: Yes
Permitted: Yes
Wet space: No
Addition: No
Conversion: No

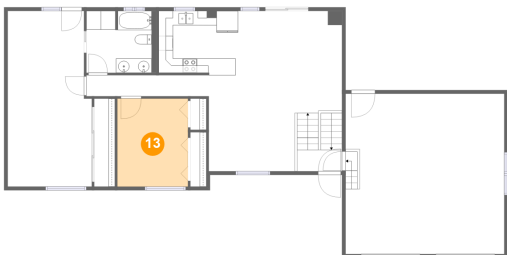
12 Floor 2 - Garage



Max Dimensions: 22'0" x 22'3"
Calculated Area: 490 sq. ft
Included: No

Heated: No
Finished: No
Enclosed: Yes
Contiguous: Yes
Permitted: Yes
Wet space: No
Addition: No
Conversion: No

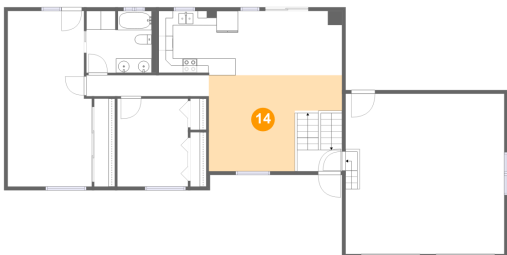
13 Floor 2 - Bedroom



Max Dimensions: 9'10" x 12'2"
Calculated Area: 120 sq. ft
Included: Yes

Heated: Yes
Finished: Yes
Enclosed: Yes
Contiguous: Yes
Permitted: Yes
Wet space: No
Addition: No
Conversion: No

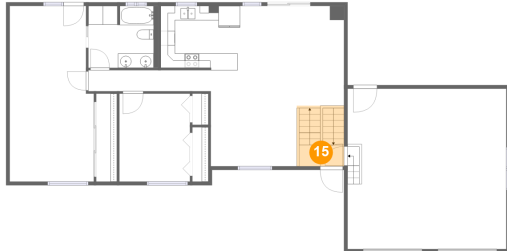
14 Floor 2 - Living Room



Max Dimensions: 18'6" x 13'3"
Calculated Area: 191 sq. ft
Included: Yes

Heated: Yes
Finished: Yes
Enclosed: Yes
Contiguous: Yes
Permitted: Yes
Wet space: No
Addition: No
Conversion: No

15 Floor 2 - Foyer



Max Dimensions: 6'3" x 2'11"
Calculated Area: 55 sq. ft
Included: Yes

Heated: Yes
Finished: Yes
Enclosed: Yes
Contiguous: Yes
Permitted: Yes
Wet space: No
Addition: No
Conversion: No