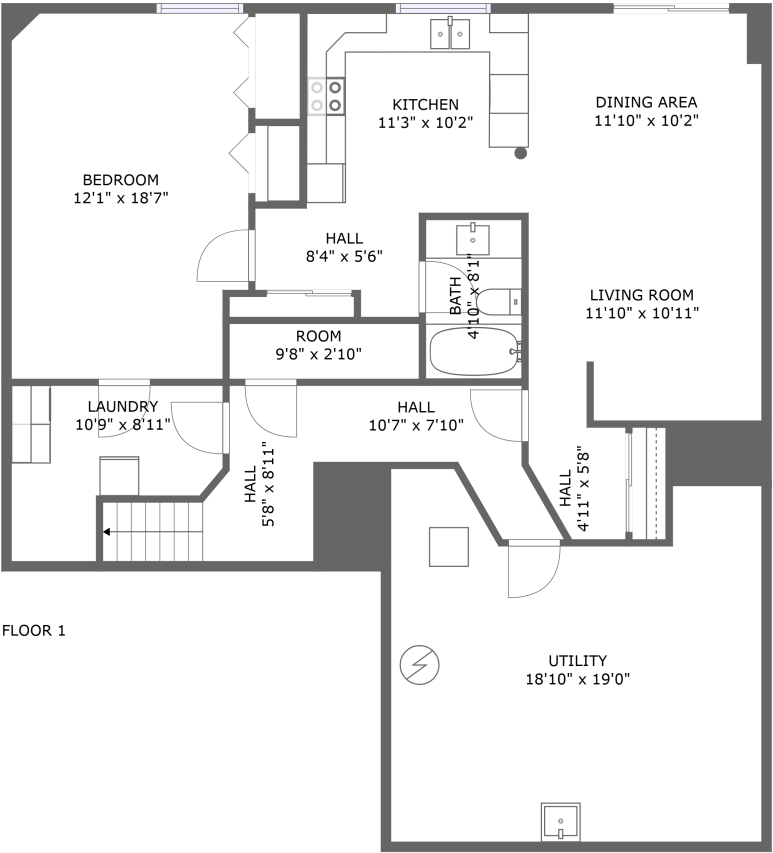


Home report

6551 Richer Drive, Orléans Village - Chateauneuf, Convent Glen,  
Orléans, Ontario, Canada, K1C 4M7, Basement Unit



Total Area: 1020 sq. ft

Floor 1: 1020 sq. ft

Excluded: Utility 315 sq. ft, Walls: 80 sq. ft

Property summary

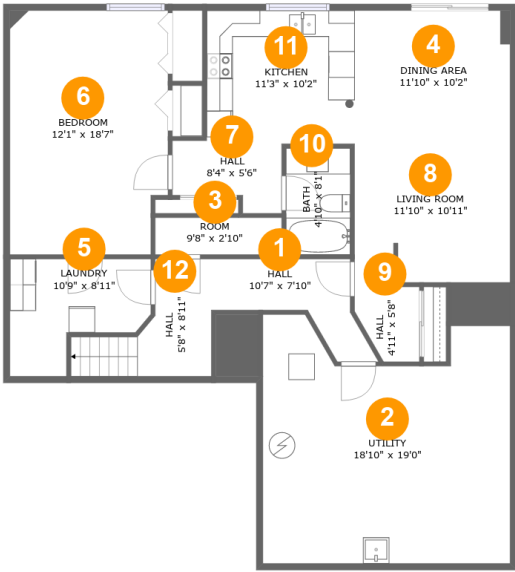
 1 Floors

 1 Bedrooms

 1 Bathrooms

Home report

6551 Richer Drive, Orléans Village - Chateauneuf, Convent Glen,  
Orléans, Ontario, Canada, K1C 4M7, Basement Unit



Room dimensions

Floor 1 Total:1020sqft    Excluded: 315sqft

#		Max Dimensions	sqft	Included
1	Hall	10'7" x 7'10"	54 sq. ft	Yes
2	Utility	18'10" x 19'0"	315 sq. ft	No
3	Room	9'8" x 2'10"	27 sq. ft	Yes
4	Dining Area	11'10" x 10'2"	121 sq. ft	Yes
5	Laundry	10'9" x 8'11"	74 sq. ft	Yes
6	Bedroom	12'1" x 18'7"	219 sq. ft	Yes
7	Hall	8'4" x 5'6"	39 sq. ft	Yes
8	Living Room	11'10" x 10'11"	126 sq. ft	Yes
9	Hall	4'11" x 5'8"	24 sq. ft	Yes
10	Bath	4'10" x 8'1"	40 sq. ft	Yes
11	Kitchen	11'3" x 10'2"	113 sq. ft	Yes

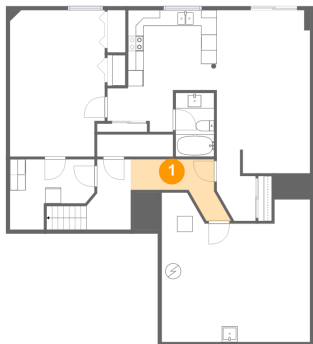
Home report

6551 Richer Drive, Orléans Village - Chateauneuf, Convent Glen,  
Orléans, Ontario, Canada, K1C 4M7, Basement Unit

#		Max Dimensions	sqft	Included
12	Hall	5'8" x 8'11"	59 sq. ft	Yes

6551 Richer Drive, Orléans Village - Chateauneuf, Convent Glen,  
Orléans, Ontario, Canada, K1C 4M7, Basement Unit

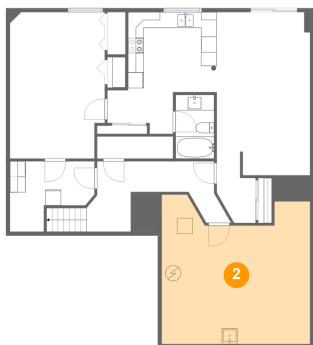
1 Floor 1 - Hall



Max Dimensions: 10'7" x 7'10"  
Calculated Area: 54 sq. ft  
Included: Yes

Heated: Yes  
Finished: Yes  
Enclosed: Yes  
Contiguous: Yes  
Permitted: Yes  
Wet space: No  
Addition: No  
Conversion: No

2 Floor 1 - Utility

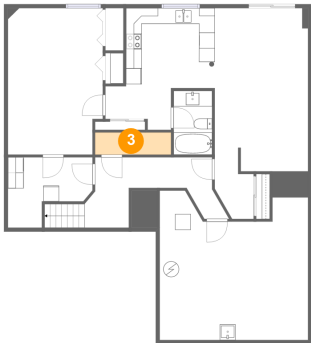


Max Dimensions: 18'10" x 19'0"  
Calculated Area: 315 sq. ft  
Included: No

Heated: Yes  
Finished: No  
Enclosed: Yes  
Contiguous: Yes  
Permitted: Yes  
Wet space: No  
Addition: No  
Conversion: No

6551 Richer Drive, Orléans Village - Chateauneuf, Convent Glen,  
Orléans, Ontario, Canada, K1C 4M7, Basement Unit

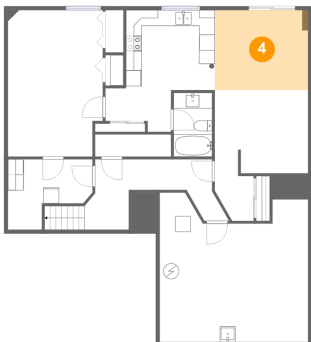
3 Floor 1 - Room



Max Dimensions: 9'8" x 2'10"  
Calculated Area: 27 sq. ft  
Included: Yes

Heated: Yes  
Finished: Yes  
Enclosed: Yes  
Contiguous: Yes  
Permitted: Yes  
Wet space: No  
Addition: No  
Conversion: No

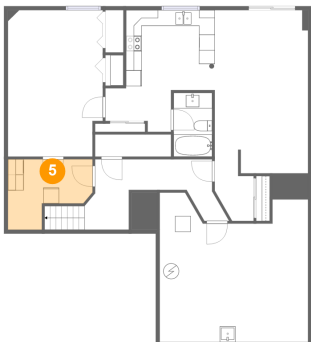
4 Floor 1 - Dining Area



Max Dimensions: 11'10" x 10'2"  
Calculated Area: 121 sq. ft  
Included: Yes

Heated: Yes  
Finished: Yes  
Enclosed: Yes  
Contiguous: Yes  
Permitted: Yes  
Wet space: No  
Addition: No  
Conversion: No

5 Floor 1 - Laundry

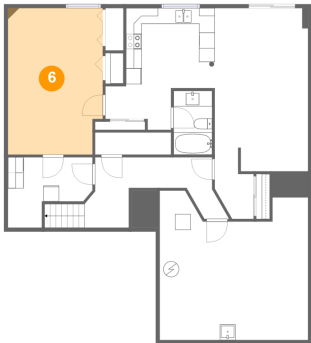


Max Dimensions: 10'9" x 8'11"  
Calculated Area: 74 sq. ft  
Included: Yes

Heated: Yes  
Finished: Yes  
Enclosed: Yes  
Contiguous: Yes  
Permitted: Yes  
Wet space: No  
Addition: No  
Conversion: No

6551 Richer Drive, Orléans Village - Chateauneuf, Convent Glen,  
Orléans, Ontario, Canada, K1C 4M7, Basement Unit

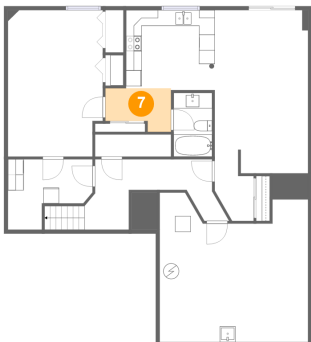
6 Floor 1 - Bedroom



Max Dimensions: 12'1" x 18'7"  
Calculated Area: 219 sq. ft  
Included: Yes

Heated: Yes  
Finished: Yes  
Enclosed: Yes  
Contiguous: Yes  
Permitted: Yes  
Wet space: No  
Addition: No  
Conversion: No

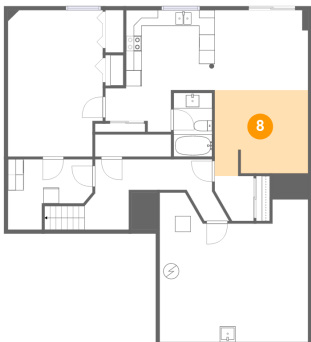
7 Floor 1 - Hall



Max Dimensions: 8'4" x 5'6"  
Calculated Area: 39 sq. ft  
Included: Yes

Heated: Yes  
Finished: Yes  
Enclosed: Yes  
Contiguous: Yes  
Permitted: Yes  
Wet space: No  
Addition: No  
Conversion: No

8 Floor 1 - Living Room

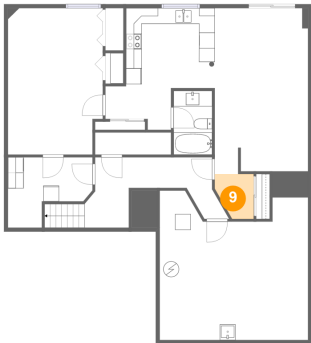


Max Dimensions: 11'10" x 10'11"  
Calculated Area: 126 sq. ft  
Included: Yes

Heated: Yes  
Finished: Yes  
Enclosed: Yes  
Contiguous: Yes  
Permitted: Yes  
Wet space: No  
Addition: No  
Conversion: No

6551 Richer Drive, Orléans Village - Chateauneuf, Convent Glen,  
Orléans, Ontario, Canada, K1C 4M7, Basement Unit

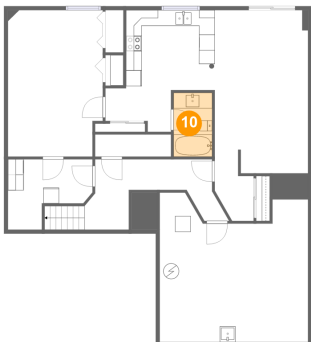
9 Floor 1 - Hall



Max Dimensions: 4'11" x 5'8"  
Calculated Area: 24 sq. ft  
Included: Yes

Heated: Yes  
Finished: Yes  
Enclosed: Yes  
Contiguous: Yes  
Permitted: Yes  
Wet space: No  
Addition: No  
Conversion: No

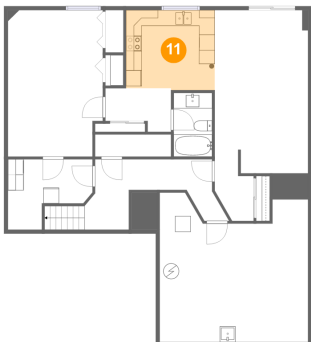
10 Floor 1 - Bath



Max Dimensions: 4'10" x 8'1"  
Calculated Area: 40 sq. ft  
Included: Yes

Heated: Yes  
Finished: Yes  
Enclosed: Yes  
Contiguous: Yes  
Permitted: Yes  
Wet space: Yes  
Addition: No  
Conversion: No

11 Floor 1 - Kitchen

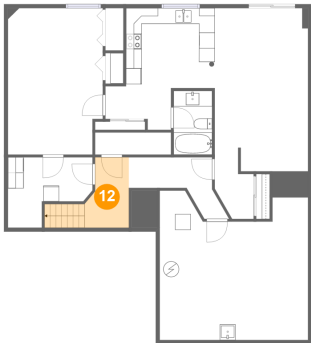


Max Dimensions: 11'3" x 10'2"  
Calculated Area: 113 sq. ft  
Included: Yes

Heated: Yes  
Finished: Yes  
Enclosed: Yes  
Contiguous: Yes  
Permitted: Yes  
Wet space: No  
Addition: No  
Conversion: No

6551 Richer Drive, Orléans Village - Chateauneuf, Convent Glen,  
Orléans, Ontario, Canada, K1C 4M7, Basement Unit

12 Floor 1 - Hall



Max Dimensions: 5'8" x 8'11"  
Calculated Area: 59 sq. ft  
Included: Yes

Heated: Yes  
Finished: Yes  
Enclosed: Yes  
Contiguous: Yes  
Permitted: Yes  
Wet space: No  
Addition: No  
Conversion: No