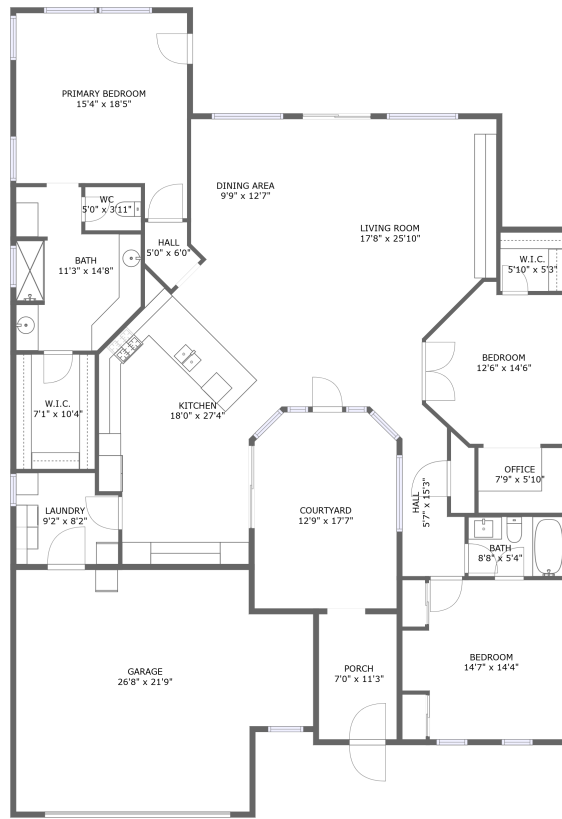



# 12935 W Lone Tree Trail, Peoria, AZ, US



FLOOR 1

## Property summary


 **1** Garages

 **3** Bedrooms

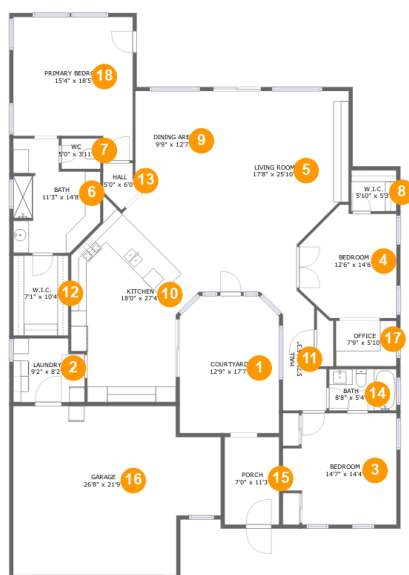
 **2** Bathrooms

 **0** Half baths

 **1** Floors

 **2,227** Gross living area sqft

 **3,078** Total sqft

**12935 W Lone Tree Trail, Peoria, AZ, US****Room dimensions**

Floor 1

Total sqft: 3078 Living area: 2227

#		Dimensions	sqft	Counted as living area
1	Outdoor	12'9" x 17'7"	218 sq. ft	No
2	Utility	9'2" x 8'2"	71 sq. ft	Yes
3	Bedroom	14'7" x 14'4"	187 sq. ft	Yes
4	Bedroom	12'6" x 14'6"	153 sq. ft	Yes
5	Living Room	17'8" x 25'10"	394 sq. ft	Yes
6	Bath	11'3" x 14'8"	133 sq. ft	Yes
7	Bath	5'0" x 3'11"	20 sq. ft	Yes
8	Cl	5'10" x 5'3"	31 sq. ft	Yes
9	Dining Room	9'9" x 12'7"	122 sq. ft	Yes
10	Kitchen	18'0" x 27'4"	383 sq. ft	Yes
11	Hall	5'7" x 15'3"	72 sq. ft	Yes

Scan captured on Fri, 10 Jan 2025 03:46:32 GMT

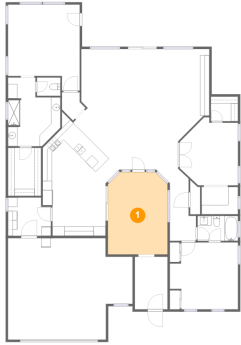
Information is calculated by Cubicasa technology deemed highly reliable but not guaranteed.

**12935 W Lone Tree Trail, Peoria, AZ, US**

#		Dimensions	sqft	Counted as living area
12	Cl	7'1" x 10'4"	73 sq. ft	Yes
13	Hall	5'0" x 6'0"	21 sq. ft	Yes
14	Bath	8'8" x 5'4"	46 sq. ft	Yes
15	Outdoor	7'0" x 11'3"	79 sq. ft	No
16	Garage	26'8" x 21'9"	512 sq. ft	No
17	Office	7'9" x 5'10"	46 sq. ft	Yes
18	Bedroom	15'4" x 18'5"	247 sq. ft	Yes

# 12935 W Lone Tree Trail, Peoria, AZ, US

## 1 Floor 1 - Outdoor



**Dimensions:** 12'9" x 17'7"  
**Area:** 218 sq. ft  
**Counted as living area:** No

**Heated:** No  
**Finished:** No  
**Enclosed:** No  
**Contiguous:** Yes  
**Permitted:** No  
**Wet space:** No  
**Addition:** No  
**Conversion:** No

## 2 Floor 1 - Utility

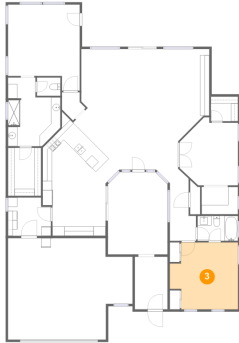


**Dimensions:** 9'2" x 8'2"  
**Area:** 71 sq. ft  
**Counted as living area:** Yes

**Heated:** Yes  
**Finished:** Yes  
**Enclosed:** Yes  
**Contiguous:** Yes  
**Permitted:** Yes  
**Wet space:** No  
**Addition:** No  
**Conversion:** No

# 12935 W Lone Tree Trail, Peoria, AZ, US

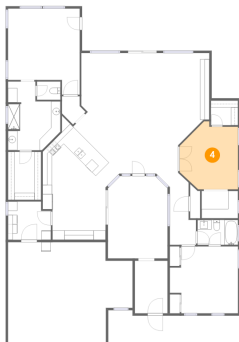
## 3 Floor 1 - Bedroom



**Dimensions:** 14'7" x 14'4"  
**Area:** 187 sq. ft  
**Counted as living area:** Yes

**Heated:** Yes  
**Finished:** Yes  
**Enclosed:** Yes  
**Contiguous:** Yes  
**Permitted:** Yes  
**Wet space:** No  
**Addition:** No  
**Conversion:** No

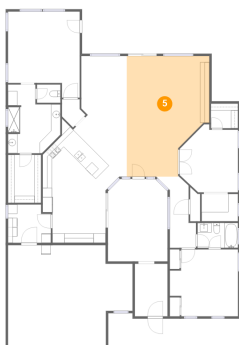
## 4 Floor 1 - Bedroom



**Dimensions:** 12'6" x 14'6"  
**Area:** 153 sq. ft  
**Counted as living area:** Yes

**Heated:** Yes  
**Finished:** Yes  
**Enclosed:** Yes  
**Contiguous:** Yes  
**Permitted:** Yes  
**Wet space:** No  
**Addition:** No  
**Conversion:** No

## 5 Floor 1 - Living Room



**Dimensions:** 17'8" x 25'10"  
**Area:** 394 sq. ft  
**Counted as living area:** Yes

**Heated:** Yes  
**Finished:** Yes  
**Enclosed:** Yes  
**Contiguous:** Yes  
**Permitted:** Yes  
**Wet space:** No  
**Addition:** No  
**Conversion:** No

# 12935 W Lone Tree Trail, Peoria, AZ, US

## 6 Floor 1 - Bath



**Dimensions:** 11'3" x 14'8"  
**Area:** 133 sq. ft  
**Counted as living area:** Yes

**Heated:** Yes  
**Finished:** Yes  
**Enclosed:** Yes  
**Contiguous:** Yes  
**Permitted:** Yes  
**Wet space:** Yes  
**Addition:** No  
**Conversion:** No

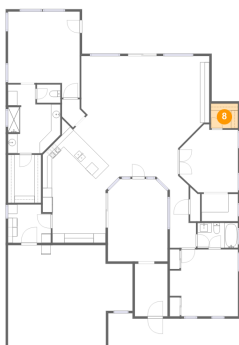
## 7 Floor 1 - Bath



**Dimensions:** 5'0" x 3'11"  
**Area:** 20 sq. ft  
**Counted as living area:** Yes

**Heated:** Yes  
**Finished:** Yes  
**Enclosed:** Yes  
**Contiguous:** Yes  
**Permitted:** Yes  
**Wet space:** Yes  
**Addition:** No  
**Conversion:** No

## 8 Floor 1 - Cl

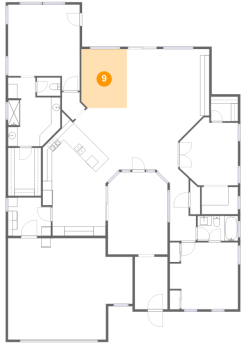


**Dimensions:** 5'10" x 5'3"  
**Area:** 31 sq. ft  
**Counted as living area:** Yes

**Heated:** Yes  
**Finished:** Yes  
**Enclosed:** Yes  
**Contiguous:** Yes  
**Permitted:** Yes  
**Wet space:** No  
**Addition:** No  
**Conversion:** No

# 12935 W Lone Tree Trail, Peoria, AZ, US

## 9 Floor 1 - Dining Room



**Dimensions:** 9'9" x 12'7"  
**Area:** 122 sq. ft  
**Counted as living area:** Yes

**Heated:** Yes  
**Finished:** Yes  
**Enclosed:** Yes  
**Contiguous:** Yes  
**Permitted:** Yes  
**Wet space:** No  
**Addition:** No  
**Conversion:** No

## 10 Floor 1 - Kitchen



**Dimensions:** 18'0" x 27'4"  
**Area:** 383 sq. ft  
**Counted as living area:** Yes

**Heated:** Yes  
**Finished:** Yes  
**Enclosed:** Yes  
**Contiguous:** Yes  
**Permitted:** Yes  
**Wet space:** No  
**Addition:** No  
**Conversion:** No

## 11 Floor 1 - Hall



**Dimensions:** 5'7" x 15'3"  
**Area:** 72 sq. ft  
**Counted as living area:** Yes

**Heated:** Yes  
**Finished:** Yes  
**Enclosed:** Yes  
**Contiguous:** Yes  
**Permitted:** Yes  
**Wet space:** No  
**Addition:** No  
**Conversion:** No

# 12935 W Lone Tree Trail, Peoria, AZ, US

## 12 Floor 1 - Cl



**Dimensions:** 7'1" x 10'4"  
**Area:** 73 sq. ft  
**Counted as living area:** Yes

**Heated:** Yes  
**Finished:** Yes  
**Enclosed:** Yes  
**Contiguous:** Yes  
**Permitted:** Yes  
**Wet space:** No  
**Addition:** No  
**Conversion:** No

## 13 Floor 1 - Hall



**Dimensions:** 5'0" x 6'0"  
**Area:** 21 sq. ft  
**Counted as living area:** Yes

**Heated:** Yes  
**Finished:** Yes  
**Enclosed:** Yes  
**Contiguous:** Yes  
**Permitted:** Yes  
**Wet space:** No  
**Addition:** No  
**Conversion:** No

## 14 Floor 1 - Bath



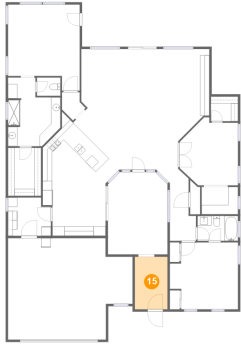
**Dimensions:** 8'8" x 5'4"  
**Area:** 46 sq. ft  
**Counted as living area:** Yes

**Heated:** Yes  
**Finished:** Yes  
**Enclosed:** Yes  
**Contiguous:** Yes  
**Permitted:** Yes  
**Wet space:** Yes  
**Addition:** No  
**Conversion:** No



# 12935 W Lone Tree Trail, Peoria, AZ, US

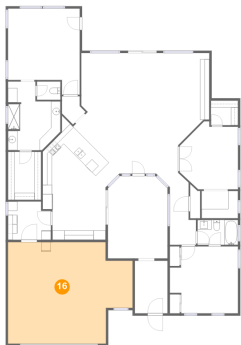
## 15 Floor 1 - Outdoor



Dimensions: 7'0" x 11'3"  
Area: 79 sq. ft  
Counted as living area: No

Heated: No  
Finished: Yes  
Enclosed: No  
Contiguous: Yes  
Permitted: Yes  
Wet space: No  
Addition: No  
Conversion: No

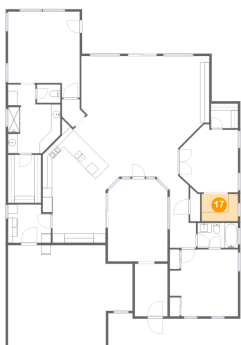
## 16 Floor 1 - Garage



Dimensions: 26'8" x 21'9"  
Area: 512 sq. ft  
Counted as living area: No

Heated: No  
Finished: No  
Enclosed: Yes  
Contiguous: Yes  
Permitted: Yes  
Wet space: No  
Addition: No  
Conversion: No

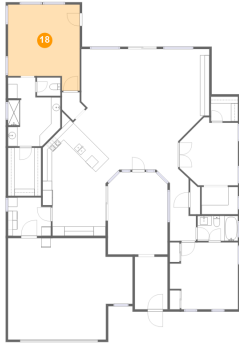
## 17 Floor 1 - Office



Dimensions: 7'9" x 5'10"  
Area: 46 sq. ft  
Counted as living area: Yes

Heated: Yes  
Finished: Yes  
Enclosed: Yes  
Contiguous: Yes  
Permitted: Yes  
Wet space: No  
Addition: No  
Conversion: No

**18** Floor 1 - Bedroom



**Dimensions:** 15'4" x 18'5"  
**Area:** 247 sq. ft  
**Counted as living area:** Yes

**Heated:** Yes  
**Finished:** Yes  
**Enclosed:** Yes  
**Contiguous:** Yes  
**Permitted:** Yes  
**Wet space:** No  
**Addition:** No  
**Conversion:** No