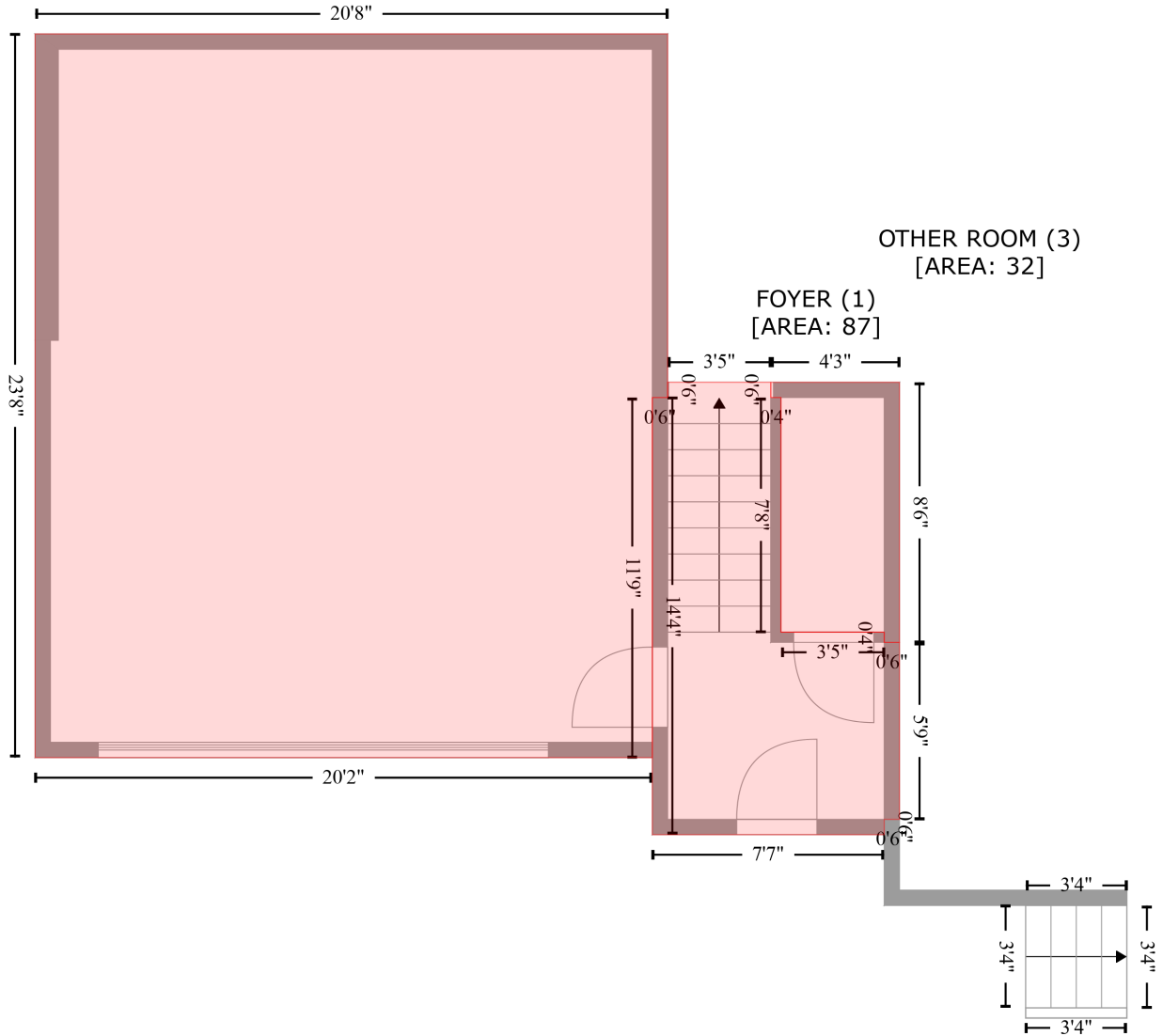


426 Sloane Avenue, Hillcrest, San Diego, San Diego County, California, United States, 92103

Gross Living Area: 2491 sq. ft

GARAGE (2)
[AREA: 484]



Space	Area (sq. ft)	Calculation <small>Coordinate Polygon Area Algorithm using inches</small>
FOYER (Non-living area)	87	$ \begin{aligned} & -((579.2 + 579.2) * (586.3 - 592.3) + (579.2 + 583.2) * (592.3 - 592.3) + (583.2 + 583.2) * (592.3 - \\ & 684.4) + (583.2 + 623.7) * (684.4 - 684.4) + (623.7 + 623.7) * (684.4 - 688.4) + (623.7 + 629.7) * \\ & (688.4 - 688.4) + (629.7 + 629.7) * (688.4 - 757.9) + (629.7 + 623.7) * (757.9 - 757.9) + (623.7 + \\ & 623.7) * (757.9 - 763.9) + (623.7 + 532.7) * (763.9 - 763.9) + (532.7 + 532.7) * (763.9 - 592.3) + \\ & (532.7 + 538.7) * (592.3 - 592.3) + (538.7 + 538.7) * (592.3 - 586.3) + (538.7 + 579.2) * (586.3 - \\ & 586.3)) * 0.5 * 0.00694 \end{aligned} $

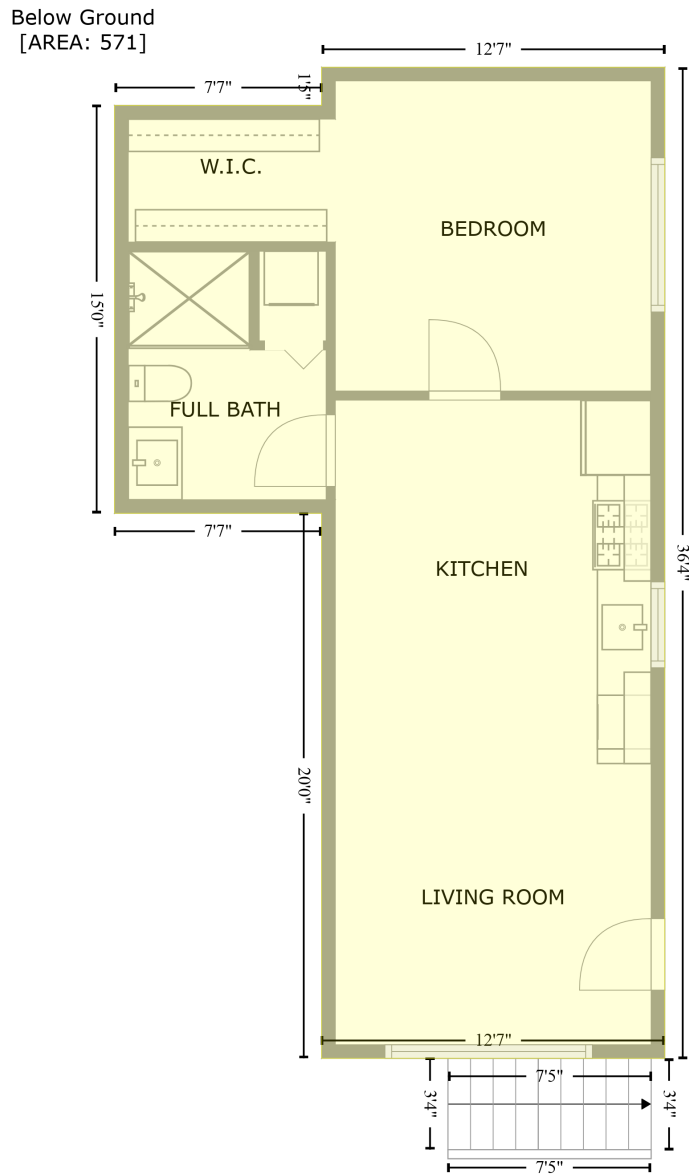
426 Sloane Avenue, Hillcrest, San Diego, San Diego County, California, United States, 92103

Gross Living Area: 2491 sq. ft

Space	Area (sq. ft)	Calculation <small>Coordinate Polygon Area Algorithm using inches</small>
GARAGE (Non-living area)	484	$-\left((538.7 + 538.7) * (449.6 - 592.3) + (538.7 + 532.7) * (592.3 - 592.3) + (532.7 + 532.7) * (592.3 - 733.7) + (532.7 + 290.3) * (733.7 - 733.7) + (290.3 + 290.3) * (733.7 - 449.6) + (290.3 + 538.7) * (449.6 - 449.6)\right) * 0.5 * 0.00694$
OTHER ROOM (Non-living area)	32	$-\left((629.7 + 629.7) * (586.3 - 688.4) + (629.7 + 623.7) * (688.4 - 688.4) + (623.7 + 623.7) * (688.4 - 684.4) + (623.7 + 583.2) * (684.4 - 684.4) + (583.2 + 583.2) * (684.4 - 592.3) + (583.2 + 579.2) * (592.3 - 592.3) + (579.2 + 579.2) * (592.3 - 586.3) + (579.2 + 629.7) * (586.3 - 586.3)\right) * 0.5 * 0.00694$

426 Sloane Avenue, Hillcrest, San Diego, San Diego County, California, United States, 92103

Gross Living Area: 2491 sq. ft



Space	Area (sq. ft)	Calculation <small>Coordinate Polygon Area Algorithm using inches</small>
Below Ground (Living area)	571	$-((774.6 + 774.6) * (355.4 - 791.7) + (774.6 + 623.7) * (791.7 - 791.7) + (623.7 + 623.7) * (791.7 - 551.8) + (623.7 + 532.7) * (551.8 - 551.8) + (532.7 + 532.7) * (551.8 - 372.2) + (532.7 + 623.7) * (372.2 - 372.2) + (623.7 + 623.7) * (372.2 - 355.4) + (623.7 + 774.6) * (355.4 - 355.4)) * 0.5 * 0.00694$

426 Sloane Avenue, Hillcrest, San Diego, San Diego County, California, United States, 92103

Gross Living Area: 2491 sq. ft



Space	Area (sq. ft)	Calculation <small>Coordinate Polygon Area Algorithm using inches</small>
UNIT 426-A (Living area)	1311	$ \begin{aligned} & -((691.2 + 691.2) * (129.6 - 378.2) + (691.2 + 629.7) * (378.2 - 378.2) + (629.7 + 629.7) * (378.2 - \\ & 401.1) + (629.7 + 538.7) * (401.1 - 401.1) + (538.7 + 538.7) * (401.1 - 545.8) + (538.7 + 629.7) * \\ & (545.8 - 545.8) + (629.7 + 629.7) * (545.8 - 733.7) + (629.7 + 483.6) * (733.7 - 733.7) + (483.6 + \\ & 483.6) * (733.7 - 668.2) + (483.6 + 290.3) * (668.2 - 668.2) + (290.3 + 290.3) * (668.2 - 306.4) + \\ & (290.3 + 322.4) * (306.4 - 306.4) + (322.4 + 322.4) * (306.4 - 129.6) + (322.4 + 691.2) * (129.6 - \\ & 129.6)) * 0.5 * 0.00694 \end{aligned} $

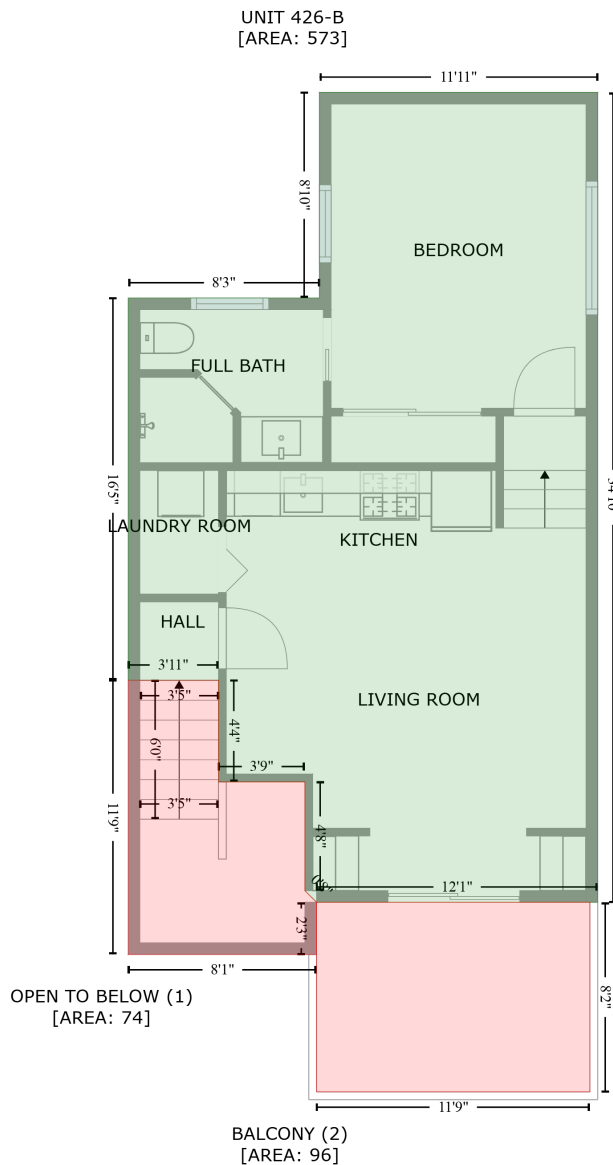
426 Sloane Avenue, Hillcrest, San Diego, San Diego County, California, United States, 92103

Gross Living Area: 2491 sq. ft

Space	Area (sq. ft)	Calculation <small>Coordinate Polygon Area Algorithm using inches</small>
BALCONY (Non-living area)	155	$-\left((483.6 + 483.6) * (668.2 - 733.7) + (483.6 + 532.7) * (733.7 - 733.7) + (532.7 + 532.7) * (733.7 - 775.5) + (532.7 + 294.3) * (775.5 - 775.5) + (294.3 + 294.3) * (775.5 - 668.2) + (294.3 + 483.6) * (668.2 - 668.2)\right) * 0.5 * 0.00694$

426 Sloane Avenue, Hillcrest, San Diego, San Diego County, California, United States, 92103

Gross Living Area: 2491 sq. ft



Space	Area (sq. ft)	Calculation <small>Coordinate Polygon Area Algorithm using inches</small>
UNIT 426-B (Living area)	573	$-((774.6 + 774.6) * (289.1 - 706.7) + (774.6 + 629.7) * (706.7 - 706.7) + (629.7 + 623.7) * (706.7 - 700.7) + (623.7 + 623.7) * (700.7 - 644.6) + (623.7 + 579.2) * (644.6 - 644.6) + (579.2 + 579.2) * (644.6 - 592.2) + (579.2 + 532.7) * (592.2 - 592.2) + (532.7 + 532.7) * (592.2 - 395.1) + (532.7 + 631.2) * (395.1 - 395.1) + (631.2 + 631.2) * (395.1 - 289.1) + (631.2 + 774.6) * (289.1 - 289.1)) * 0.5 * 0.00694$
OPEN TO BELOW	74	$-((579.2 + 579.2) * (592.2 - 644.6) + (579.2 + 623.7) * (644.6 - 644.6) + (623.7 + 623.7) * (644.6 - 644.6) + (623.7 + 623.7) * (644.6 - 644.6) + (623.7 + 623.7) * (644.6 - 644.6)) * 0.5 * 0.00694$

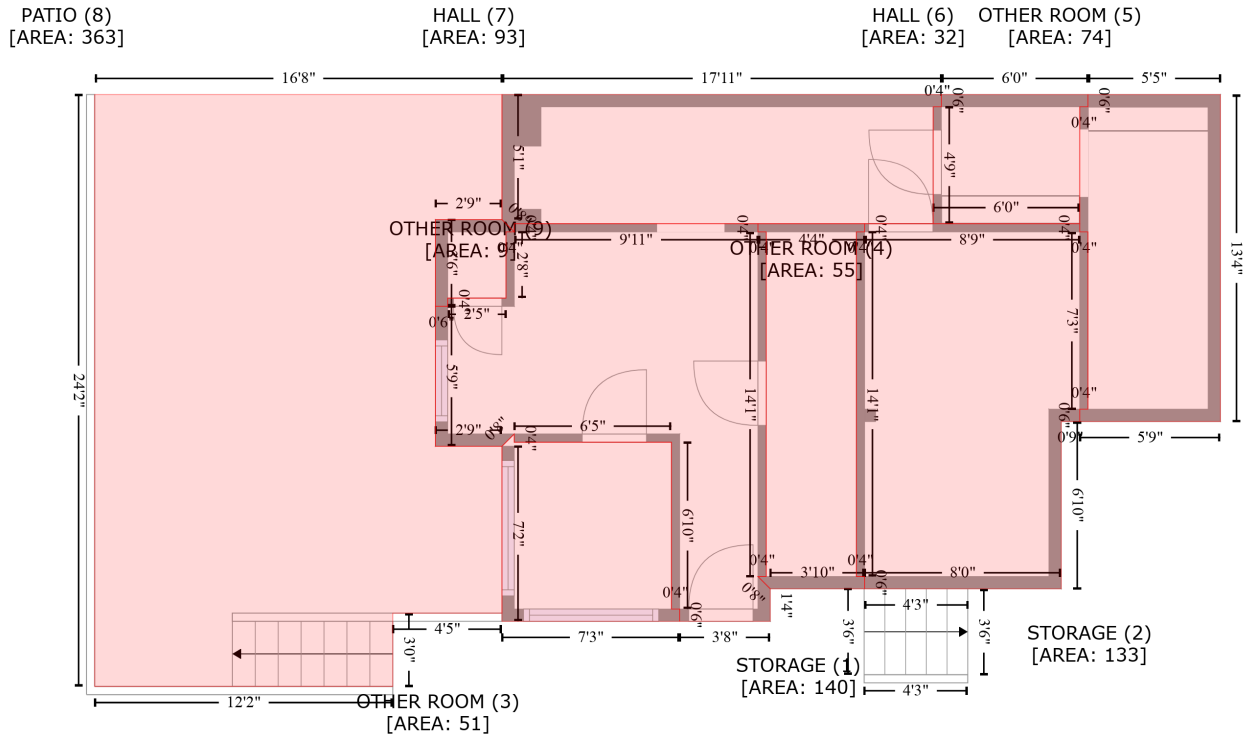
426 Sloane Avenue, Hillcrest, San Diego, San Diego County, California, United States, 92103

Gross Living Area: 2491 sq. ft

Space	Area (sq. ft)	Calculation <small>Coordinate Polygon Area Algorithm using inches</small>
(Non-living area)		$700.7 + (623.7 + 629.7) * (700.7 - 706.7) + (629.7 + 629.7) * (706.7 - 733.7) + (629.7 + 532.7) * (733.7 - 733.7) + (532.7 + 532.7) * (733.7 - 592.2) + (532.7 + 579.2) * (592.2 - 592.2) * 0.5 * 0.00694$
BALCONY (Non-living area)	96	$-((770.6 + 770.6) * (706.7 - 804.5) + (770.6 + 629.7) * (804.5 - 804.5) + (629.7 + 629.7) * (804.5 - 706.7) + (629.7 + 770.6) * (706.7 - 706.7)) * 0.5 * 0.00694$

426 Sloane Avenue, Hillcrest, San Diego, San Diego County, California, United States, 92103

Gross Living Area: 2491 sq. ft



Space	Area (sq. ft)	Calculation
STORAGE (Non-living area)	140	Coordinate Polygon Area Algorithm using inches $-((589.8 + 589.8) * (-144.7 - -140.7) + (589.8 + 593.8) * (-140.7 - -140.7) + (593.8 + 593.8) * (-140.7 - 28.1) + (593.8 + 589.8) * (28.1 - 28.1) + (589.8 + 595.8) * (28.1 - 34.1) + (595.8 + 595.8) * (34.1 - 50) + (595.8 + 551.4) * (50 - 50) + (551.4 + 551.4) * (50 - 44) + (551.4 + 547.4) * (44 - 44) + (547.4 + 547.4) * (44 - -37.7) + (547.4 + 470.4) * (-37.7 - -37.7) + (470.4 + 470.4) * (-37.7 - -41.7) + (470.4 + 464.4) * (-41.7 - -35.7) + (464.4 + 431.8) * (-35.7 - -35.7) + (431.8 + 431.8) * (-35.7 - -104.3) + (431.8 + 437.8) * (-104.3 - -104.3) + (437.8 + 437.8) * (-104.3 - -108.3) + (437.8 + 466.4) * (-108.3 - -108.3) + (466.4 + 466.4) * (-108.3 - -140.7) + (466.4 + 470.4) * (-140.7 - -140.7) + (470.4 + 470.4) * (-140.7 - -144.7) + (470.4 + 589.8) * (-144.7 - -144.7)) * 0.5 * 0.00694$
STORAGE (Non-living area)	133	Coordinate Polygon Area Algorithm using inches $-((747.5 + 747.5) * (-144.7 - -140.7) + (747.5 + 751.5) * (-140.7 - -140.7) + (751.5 + 751.5) * (-140.7 - -53.9) + (751.5 + 747.5) * (-53.9 - -53.9) + (747.5 + 747.5) * (-53.9 - -47.9) + (747.5 + 738.4) * (-47.9 - -47.9) + (738.4 + 738.4) * (-47.9 - 34.1) + (738.4 + 642) * (34.1 - 34.1) + (642 + 642) * (34.1 - 28.1) + (642 + 638) * (28.1 - 28.1) + (638 + 638) * (28.1 - -140.7) + (638 + 642) * (-140.7 - -140.7) + (642 + 642) * (-140.7 - -144.7) + (642 + 747.5) * (-144.7 - -144.7)) * 0.5 * 0.00694$
OTHER ROOM (Non-living area)	51	Coordinate Polygon Area Algorithm using inches $-((470.4 + 470.4) * (-41.7 - -37.7) + (470.4 + 547.4) * (-37.7 - -37.7) + (547.4 + 547.4) * (-37.7 - 44) + (547.4 + 551.4) * (44 - 44) + (551.4 + 551.4) * (44 - 50) + (551.4 + 464.4) * (50 - 50) + (464.4 + 464.4) * (50 - -35.7) + (464.4 + 470.4) * (-35.7 - -41.7)) * 0.5 * 0.00694$
OTHER ROOM (Non-living area)	55	Coordinate Polygon Area Algorithm using inches $-((642 + 642) * (-144.7 - -140.7) + (642 + 638) * (-140.7 - -140.7) + (638 + 638) * (-140.7 - 28.1) + (638 + 642) * (28.1 - 28.1) + (642 + 642) * (28.1 - 34.1) + (642 + 595.8) * (34.1 - 34.1) + (595.8 + 589.8) * (34.1 - 28.1) + (589.8 + 593.8) * (28.1 - 28.1) + (593.8 + 593.8) * (28.1 - -140.7) + (593.8 + 589.8) * (-140.7 - -140.7) + (589.8 + 589.8) * (-140.7 - -144.7) + (589.8 + 642) * (-144.7 - -144.7)) * 0.5 * 0.00694$
OTHER ROOM (Non-living area)	74	Coordinate Polygon Area Algorithm using inches $-((816.4 + 816.4) * (-208 - -47.9) + (816.4 + 747.5) * (-47.9 - -47.9) + (747.5 + 747.5) * (-47.9 - -53.9) + (747.5 + 751.5) * (-53.9 - -53.9) + (751.5 + 751.5) * (-53.9 - -140.7) + (751.5 + 747.5) * (-140.7 - -140.7)) * 0.5 * 0.00694$

426 Sloane Avenue, Hillcrest, San Diego, San Diego County, California, United States, 92103

Gross Living Area: 2491 sq. ft

Space	Area (sq. ft)	Calculation <small>Coordinate Polygon Area Algorithm using inches</small>
HALL (Non-living area)	32	$(-140.7 - -140.7) + (747.5 + 747.5) * (-140.7 - -202) + (747.5 + 751.5) * (-202 - -202) + (751.5 + 751.5) * (-202 - -208) + (751.5 + 816.4) * (-208 - -208)) * 0.5 * 0.00694$
HALL (Non-living area)	93	$-((751.5 + 751.5) * (-208 - -202) + (751.5 + 747.5) * (-202 - -202) + (747.5 + 747.5) * (-202 - -144.7) + (747.5 + 675.7) * (-144.7 - -144.7) + (675.7 + 675.7) * (-144.7 - -202) + (675.7 + 679.7) * (-202 - -202) + (679.7 + 679.7) * (-202 - -208) + (679.7 + 751.5) * (-208 - -208)) * 0.5 * 0.00694$
PATIO (Non-living area)	363	$-((464.4 + 464.4) * (-208 - -146.7) + (464.4 + 431.8) * (-146.7 - -146.7) + (431.8 + 431.8) * (-146.7 - -35.7) + (431.8 + 464.4) * (-35.7 - -35.7) + (464.4 + 464.4) * (-35.7 - 46) + (464.4 + 410.9) * (46 - 46) + (410.9 + 410.9) * (46 - 81.9) + (410.9 + 264.8) * (81.9 - 81.9) + (264.8 + 264.8) * (81.9 - -208) + (264.8 + 464.4) * (-208 - -208)) * 0.5 * 0.00694$
OTHER ROOM (Non-living area)	9	$-((464.4 + 470.4) * (-146.7 - -140.7) + (470.4 + 466.4) * (-140.7 - -140.7) + (466.4 + 466.4) * (-140.7 - -108.3) + (466.4 + 437.8) * (-108.3 - -108.3) + (437.8 + 437.8) * (-108.3 - -104.3) + (437.8 + 431.8) * (-104.3 - -104.3) + (431.8 + 431.8) * (-104.3 - -146.7) + (431.8 + 464.4) * (-146.7 - -146.7)) * 0.5 * 0.00694$

