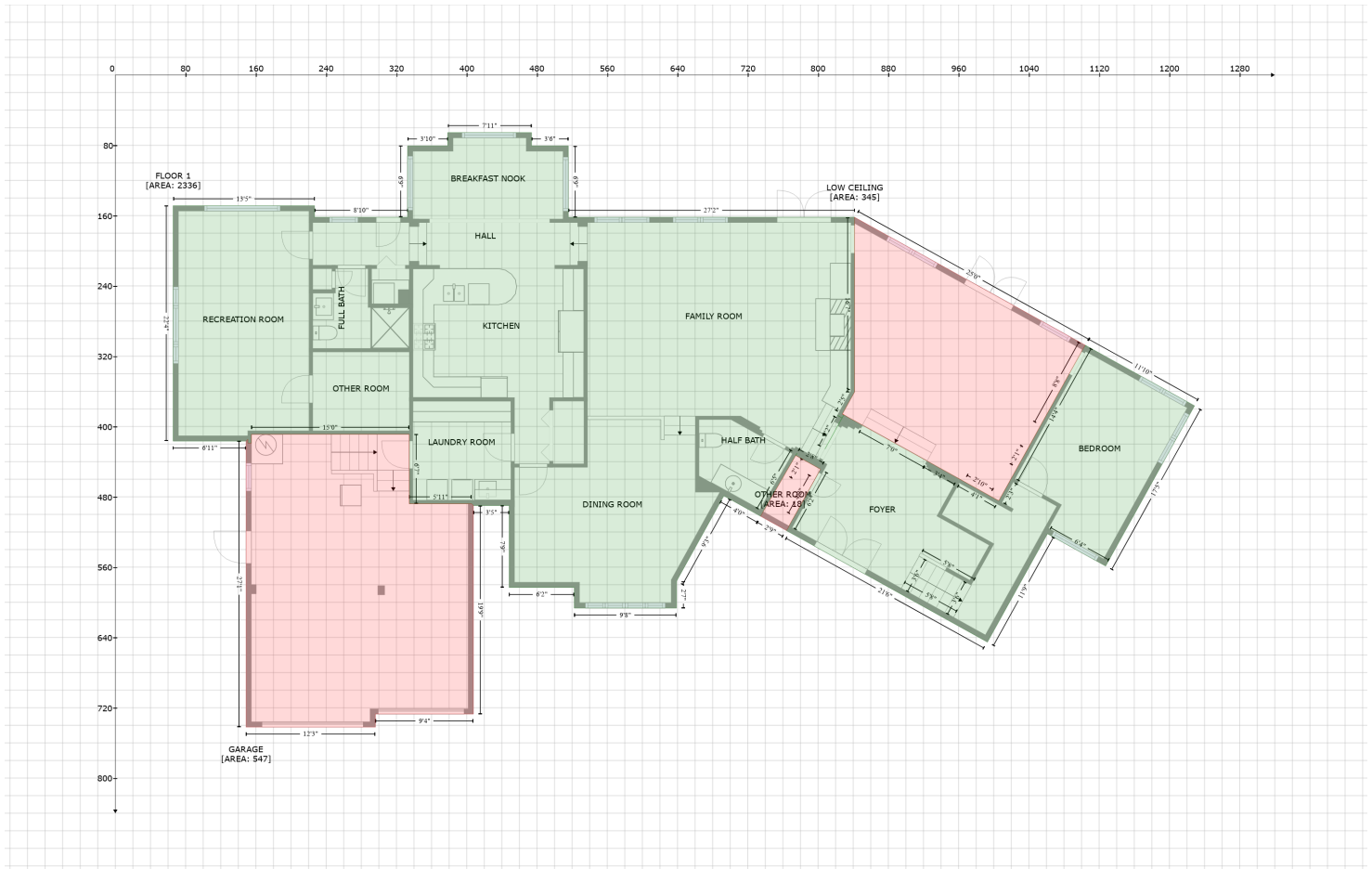


# 900 Harbor Island, 700 Island Way, Clearwater Beach, Pinellas County, Florida, United States, 33767

Gross Living Area: 4680 sq. ft



Space	Area (sq. ft)	Calculation
FLOOR 1 (Living area)	2336	Coordinate Polygon Area Algorithm using inches $-((473.8 + 473.8) * (65.6 - 80.7) + (473.8 + 515.7) * (80.7 - 80.7) + (515.7 + 515.7) * (80.7 - 161.9) + (515.7 + 841.5) * (161.9 - 161.9) + (841.5 + 841.5) * (161.9 - 360.7) + (841.5 + 827.7) * (360.7 - 385.8) + (827.7 + 829.3) * (385.8 - 386.7) + (829.3 + 827.4) * (386.7 - 390.2) + (827.4 + 822.2) * (390.2 - 387.3) + (822.2 + 823.4) * (387.3 - 388.1) + (823.4 + 827.3) * (388.1 - 390.3) + (827.3 + 826.1) * (390.3 - 392.1) + (826.1 + 808) * (392.1 - 425.4) + (808 + 807.6) * (425.4 - 425.7) + (807.6 + 808.1) * (425.7 - 425.4) + (808.1 + 826.4) * (425.4 - 392.3) + (826.4 + 829.5) * (392.3 - 386.8) + (829.5 + 832.9) * (386.8 - 388.7) + (832.9 + 832.8) * (388.7 - 388.7) + (832.8 + 850.6) * (388.7 - 398.5) + (850.6 + 850.6) * (398.5 - 398.6) + (850.6 + 924) * (398.6 - 439.2) + (924 + 959.3) * (439.2 - 458.7) + (959.3 + 959.2) * (458.7 - 458.8) + (959.2 + 962.8) * (458.8 - 460.7) + (962.8 + 1005.7) * (460.7 - 484.5) + (1005.7 + 1005.8) * (484.5 - 484.5) + (1005.8 + 1018.8) * (484.5 - 461.2) + (1018.8 + 1018.8) * (461.2 - 461.2) + (1018.8 + 1020.6) * (461.2 - 457.7) + (1020.6 + 1020.7) * (457.7 - 457.7) + (1020.7 + 1103.9) * (457.7 - 307.7) + (1103.9 + 1105.7) * (307.7 - 308.8) + (1105.7 + 1104.1) * (308.8 - 307.7) + (1104.1 + 1104.2) * (307.7 - 307.5) + (1104.2 + 1228.6) * (307.5 - 376.4) + (1228.6 + 1127.4) * (376.4 - 558.8) + (1127.4 + 1061.2) * (558.8 - 522.1) + (1061.2 + 992.8) * (522.1 - 645.3) + (992.8 + 767.4) * (645.3 - 520.3) + (767.4 + 764) * (520.3 - 518.4) + (764 + 765.6) * (518.4 - 515.9) + (765.6 + 766.5) * (515.9 - 514.3) + (766.5 + 766.9) * (514.3 - 513.3) + (766.9 + 802.7) * (513.3 - 448.6) + (802.7 + 774.5) * (448.6 - 432.9) + (774.5 + 776) * (432.9 - 430.5) + (776 + 737.4) * (430.5 - 497) + (737.4 + 737.6) * (497 - 496.9) + (737.6 + 734.7) * (496.9 - 502.1) + (734.7 + 692.8) * (502.1 - 478.9) + (692.8 + 638.8) * (478.9 - 576.1) + (638.8 + 638.8) * (576.1 - 606.6) + (638.8 + 522.5) * (606.6 - 606.6) + (522.5 + 522.5) * (606.6 - 583.2) + (522.5 + 448.4) * (583.2 - 583.2) + (448.4 + 448.4) * (583.2 - 489.9) + (448.4 + 407.6) * (489.9 - 489.9) + (407.6 + 405.7) * (489.9 - 487.9) + (405.7 + 334.7) * (487.9 - 487.9) + (334.7 + 334.7) * (487.9 - 408.9) + (334.7 + 154.8) * (408.9 - 408.9) + (154.8 +$

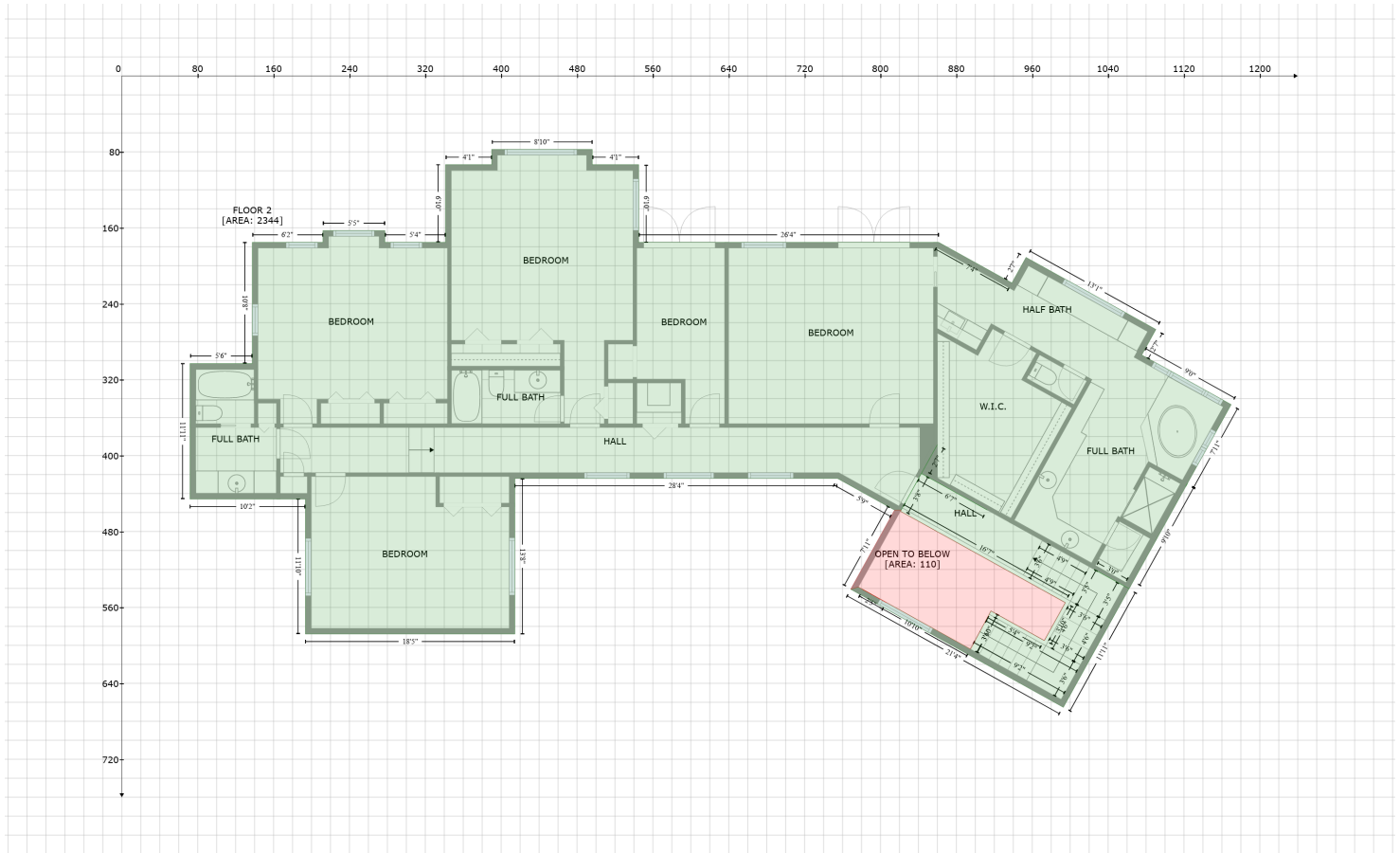
# 900 Harbor Island, 700 Island Way, Clearwater Beach, Pinellas County, Florida, United States, 33767

Gross Living Area: 4680 sq. ft

Space	Area (sq. ft)	Calculation <small>Coordinate Polygon Area Algorithm using inches</small>
		$154.8 * (408.9 - 419) + (154.8 + 150.8) * (419 - 419) + (150.8 + 150.8) * (419 - 414.7) + (150.8 + 148.8) * (414.7 - 416.6) + (148.8 + 65.8) * (416.6 - 416.6) + (65.8 + 65.8) * (416.6 - 148.8) + (65.8 + 226.7) * (148.8 - 148.8) + (226.7 + 226.7) * (148.8 - 161.9) + (226.7 + 332.7) * (161.9 - 161.9) + (332.7 + 332.7) * (161.9 - 80.7) + (332.7 + 378.4) * (80.7 - 80.7) + (378.4 + 378.4) * (80.7 - 65.6) + (378.4 + 473.8) * (65.6 - 65.6) * 0.5 * 0.00694$
OTHER ROOM (Non-living area)	18	$-(774.6 + 802.7) * (432.9 - 448.6) + (802.7 + 797.2) * (448.6 - 458.8) + (797.2 + 773.2) * (458.8 - 502.1) + (773.2 + 770) * (502.1 - 507.2) + (770 + 766.9) * (507.2 - 513.3) + (766.9 + 766.5) * (513.3 - 514.3) + (766.5 + 765.6) * (514.3 - 515.9) + (765.6 + 763.9) * (515.9 - 518.3) + (763.9 + 734.7) * (518.3 - 502.1) + (734.7 + 737.5) * (502.1 - 497) + (737.5 + 737.6) * (497 - 496.9) + (737.6 + 748.1) * (496.9 - 478.9) + (748.1 + 758.5) * (478.9 - 460.7) + (758.5 + 760.3) * (460.7 - 457.7) + (760.3 + 762) * (457.7 - 454.5) + (762 + 774.6) * (454.5 - 432.9) * 0.5 * 0.00694$
GARAGE (Non-living area)	547	$-(334.7 + 334.7) * (408.9 - 487.9) + (334.7 + 405.7) * (487.9 - 487.9) + (405.7 + 407.6) * (487.9 - 489.9) + (407.6 + 407.6) * (489.9 - 727.2) + (407.6 + 296) * (727.2 - 727.2) + (296 + 296) * (727.2 - 742) + (296 + 148.8) * (742 - 742) + (148.8 + 148.8) * (742 - 416.6) + (148.8 + 150.8) * (416.6 - 414.7) + (150.8 + 150.8) * (414.7 - 419) + (150.8 + 154.8) * (419 - 419) + (154.8 + 154.8) * (419 - 408.9) + (154.8 + 334.7) * (408.9 - 408.9) * 0.5 * 0.00694$
LOW CEILING (Non-living area)	345	$-(841.5 + 1104.2) * (161.9 - 307.5) + (1104.2 + 1103.9) * (307.5 - 307.7) + (1103.9 + 1053.5) * (307.7 - 398.6) + (1053.5 + 1044.7) * (398.6 - 414.7) + (1044.7 + 1043.6) * (414.7 - 416.6) + (1043.6 + 1038.8) * (416.6 - 425.4) + (1038.8 + 1026.7) * (425.4 - 447) + (1026.7 + 1025.8) * (447 - 448.6) + (1025.8 + 1019.8) * (448.6 - 459.2) + (1019.8 + 1019.4) * (459.2 - 460) + (1019.4 + 1018.7) * (460 - 461.2) + (1018.7 + 1018.3) * (461.2 - 462.4) + (1018.3 + 1005.7) * (462.4 - 484.4) + (1005.7 + 999.8) * (484.4 - 481.3) + (999.8 + 995.4) * (481.3 - 478.9) + (995.4 + 965.9) * (478.9 - 462.4) + (965.9 + 963.5) * (462.4 - 461.2) + (963.5 + 962.8) * (461.2 - 460.7) + (962.8 + 959.2) * (460.7 - 458.8) + (959.2 + 959.3) * (458.8 - 458.7) + (959.3 + 924) * (458.7 - 439.2) + (924 + 850.6) * (439.2 - 398.6) + (850.6 + 850.6) * (398.6 - 398.5) + (850.6 + 839.5) * (398.5 - 392.3) + (839.5 + 835.7) * (392.3 - 390.3) + (835.7 + 832.8) * (390.3 - 388.7) + (832.8 + 832.9) * (388.7 - 388.7) + (832.9 + 830.6) * (388.7 - 387.3) + (830.6 + 828.1) * (387.3 - 385.8) + (828.1 + 829.7) * (385.8 - 386.8) + (829.7 + 827.7) * (386.8 - 385.8) + (827.7 + 827.7) * (385.8 - 385.6) + (827.7 + 841.5) * (385.6 - 360.7) + (841.5 + 841.5) * (360.7 - 161.9) * 0.5 * 0.00694$

# 900 Harbor Island, 700 Island Way, Clearwater Beach, Pinellas County, Florida, United States, 33767

Gross Living Area: 4680 sq. ft



Space	Area (sq. ft)	Calculation
FLOOR 2 (Living area)	2344	Coordinate Polygon Area Algorithm using inches $-((496.1 + 496.1) * (77.4 - 93.5) + (496.1 + 545) * (93.5 - 93.5) + (545 + 545) * (93.5 - 175.3) + (545 + 861.4) * (175.3 - 175.3) + (861.4 + 938.6) * (175.3 - 218.1) + (938.6 + 953.5) * (218.1 - 191.2) + (953.5 + 1090.4) * (191.2 - 267.1) + (1090.4 + 1075.5) * (267.1 - 294) + (1075.5 + 1169.8) * (294 - 346.3) + (1169.8 + 1123.4) * (346.3 - 429.6) + (1123.4 + 1123.8) * (429.6 - 429.2) + (1123.8 + 1121.9) * (429.2 - 432.7) + (1121.9 + 1123.4) * (432.7 - 429.9) + (1123.4 + 1066.3) * (429.9 - 532.8) + (1066.3 + 1062.2) * (532.8 - 540.2) + (1062.2 + 1056.9) * (540.2 - 537.4) + (1056.9 + 1025.4) * (537.4 - 520.2) + (1025.4 + 1056.9) * (520.2 - 537.5) + (1056.9 + 1062) * (537.5 - 540.2) + (1062 + 992.8) * (540.2 - 665.3) + (992.8 + 768.5) * (665.3 - 540.9) + (768.5 + 776.7) * (540.9 - 538.6) + (776.7 + 790.5) * (538.6 - 546.2) + (790.5 + 781) * (546.2 - 540.9) + (781 + 895) * (540.9 - 604) + (895 + 916.5) * (604 - 563.7) + (916.5 + 972.7) * (563.7 - 594.9) + (972.7 + 994.9) * (594.9 - 555) + (994.9 + 821) * (555 - 458.7) + (821 + 821.9) * (458.7 - 457.5) + (821.9 + 843.1) * (457.5 - 419) + (843.1 + 912.5) * (419 - 457.5) + (912.5 + 912.6) * (457.5 - 457.4) + (912.6 + 843.1) * (457.4 - 418.9) + (843.1 + 845) * (418.9 - 415.4) + (845 + 859.8) * (415.4 - 388.7) + (859.8 + 823) * (388.7 - 455.1) + (823 + 821.7) * (455.1 - 457.4) + (821.7 + 814.8) * (457.4 - 457.5) + (814.8 + 754.6) * (457.5 - 424.1) + (754.6 + 414.5) * (424.1 - 424.1) + (414.5 + 414.5) * (424.1 - 588.1) + (414.5 + 193.6) * (588.1 - 588.1) + (193.6 + 193.6) * (588.1 - 445.9) + (193.6 + 71.9) * (445.9 - 445.9) + (71.9 + 71.9) * (445.9 - 303) + (71.9 + 137.6) * (303 - 303) + (137.6 + 137.6) * (303 - 175.3) + (137.6 + 212) * (175.3 - 175.3) + (212 + 212) * (175.3 - 163) + (212 + 277.4) * (163 - 163) + (277.4 + 277.4) * (163 - 175.3) + (277.4 + 341.4) * (175.3 - 175.3) + (341.4 + 341.4) * (175.3 - 93.5) + (341.4 + 390) * (93.5 - 93.5) + (390 + 390) * (93.5 - 77.4) + (390 + 496.1) * (77.4 - 77.4) * 0.5 * 0.00694$
OPEN TO BELOW (Non-living area)	110	$-((821.7 + 821) * (457.4 - 458.7) + (821 + 994.9) * (458.7 - 555) + (994.9 + 972.7) * (555 - 594.9) + (972.7 + 916.5) * (594.9 - 563.7) + (916.5 + 895) * (563.7 - 604) + (895 + 781) * (604 - 540.9) + (781 + 806.2) * (540.9 - 555) + (806.2 + 776.7) * (555 - 538.6) + (776.7 + 768.5) * (538.6 - 540.9)$

# 900 Harbor Island, 700 Island Way, Clearwater Beach, Pinellas County, Florida, United States, 33767

Gross Living Area: 4680 sq. ft

Space	Area (sq. ft)	Calculation <small>Coordinate Polygon Area Algorithm using inches</small>
		$+ (768.5 + 814.8) * (540.9 - 457.5) + (814.8 + 821.7) * (457.5 - 457.4) * 0.5 * 0.00694$