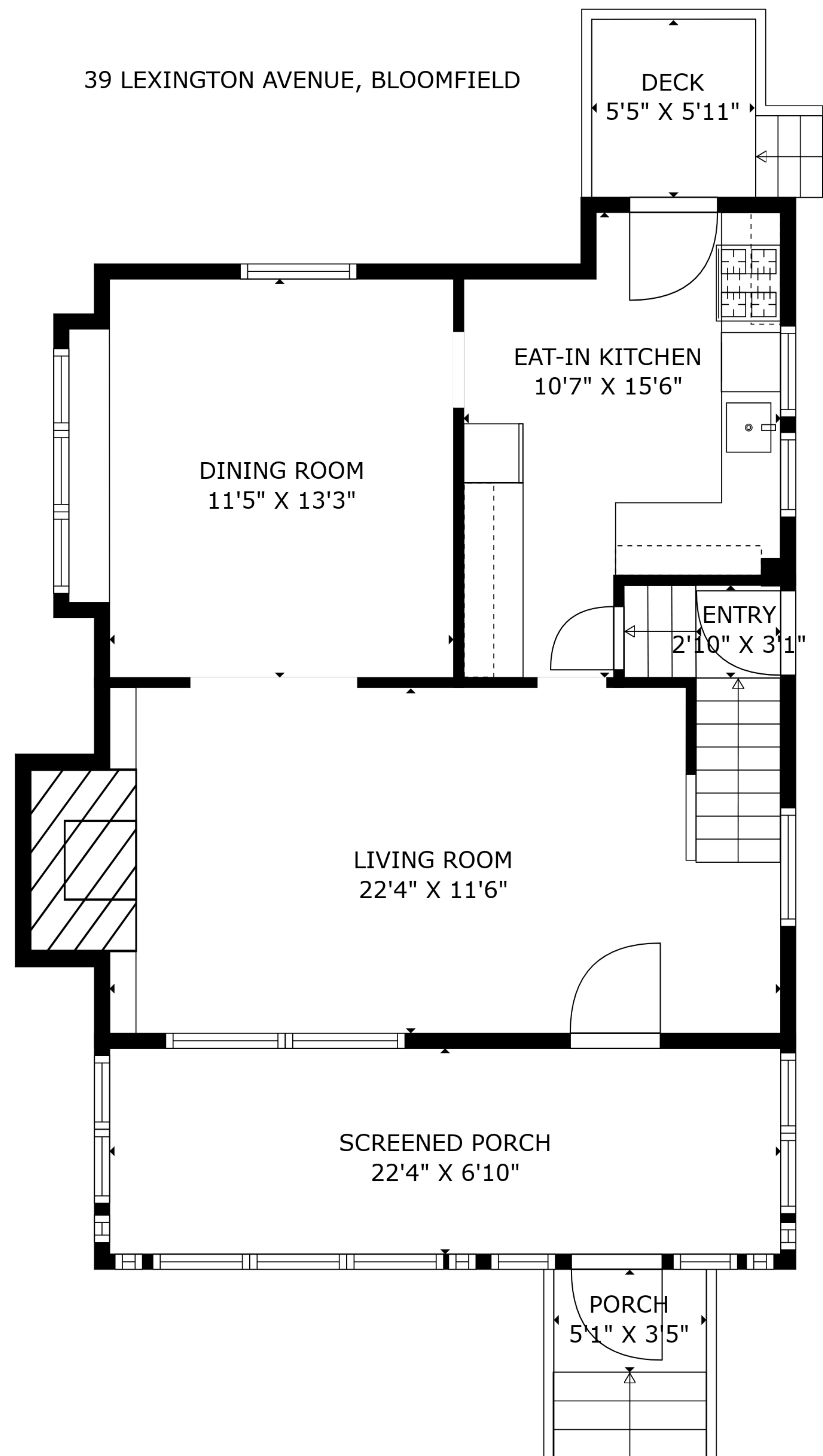


TOTAL: 1329 sq. ft

BELOW GROUND: 0 sq. ft, FIRST FLOOR: 603 sq. ft, SECOND FLOOR: 597 sq. ft, THIRD FLOOR: 129 sq. ft
EXCLUDED AREAS: BASEMENT: 500 sq. ft, TOILET: 12 sq. ft, SCREENED PORCH: 153 sq. ft,
PORCH: 32 sq. ft, DECK: 38 sq. ft, FIREPLACE: 19 sq. ft,
LOW CEILING: 342 sq. ft, ATTIC: 133 sq. ft
WALLS: 203 sq. ft

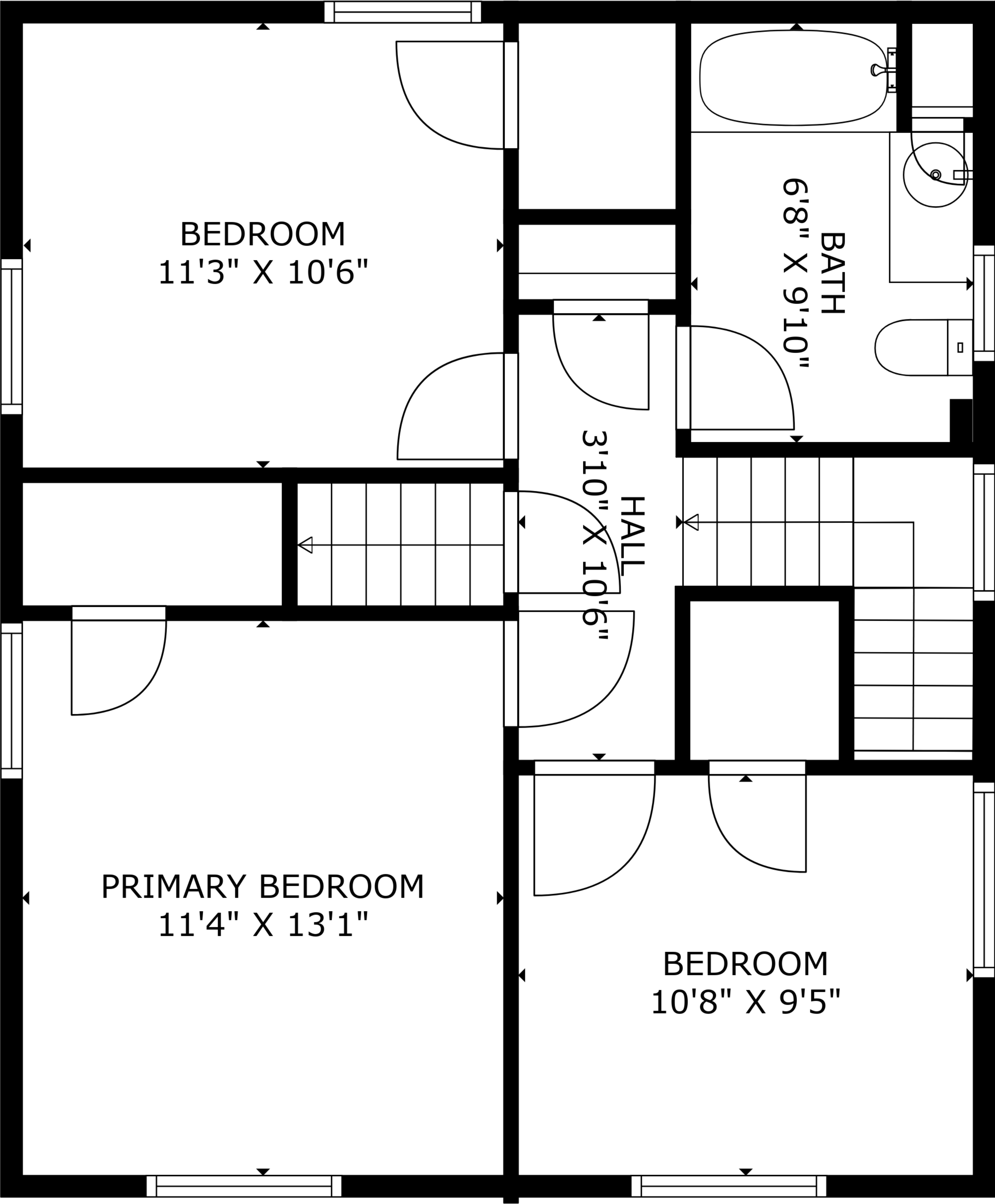
Measurements Are Deemed Highly Reliable But Not Guaranteed

39 LEXINGTON AVENUE, BLOOMFIELD



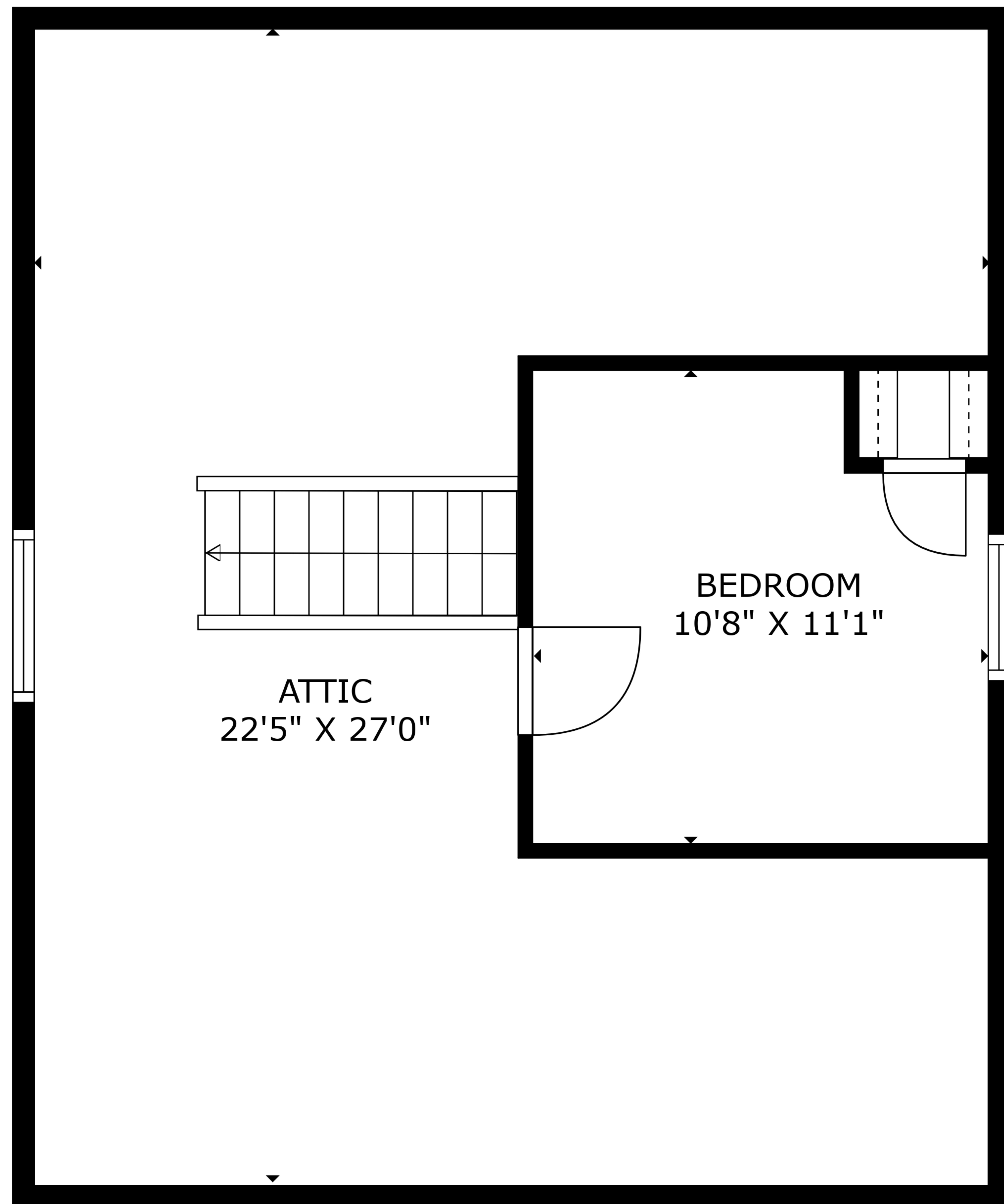
TOTAL: 1329 sq. ft
BELOW GROUND: 0 sq. ft, FIRST FLOOR: 603 sq. ft, SECOND FLOOR: 597 sq. ft, THIRD FLOOR: 129 sq. ft
EXCLUDED AREAS: BASEMENT: 500 sq. ft, TOILET: 12 sq. ft, SCREENED PORCH: 153 sq. ft,
PORCH: 32 sq. ft, DECK: 38 sq. ft, FIREPLACE: 19 sq. ft,
LOW CEILING: 342 sq. ft, ATTIC: 133 sq. ft
WALLS: 203 sq. ft

Measurements Are Deemed Highly Reliable But Not Guaranteed



TOTAL: 1329 sq. ft
BELOW GROUND: 0 sq. ft, FIRST FLOOR: 603 sq. ft, SECOND FLOOR: 597 sq. ft, THIRD FLOOR: 129 sq. ft
EXCLUDED AREAS: BASEMENT: 500 sq. ft, TOILET: 12 sq. ft, SCREENED PORCH: 153 sq. ft,
PORCH: 32 sq. ft, DECK: 38 sq. ft, FIREPLACE: 19 sq. ft,
LOW CEILING: 342 sq. ft, ATTIC: 133 sq. ft
WALLS: 203 sq. ft

Measurements Are Deemed Highly Reliable But Not Guaranteed

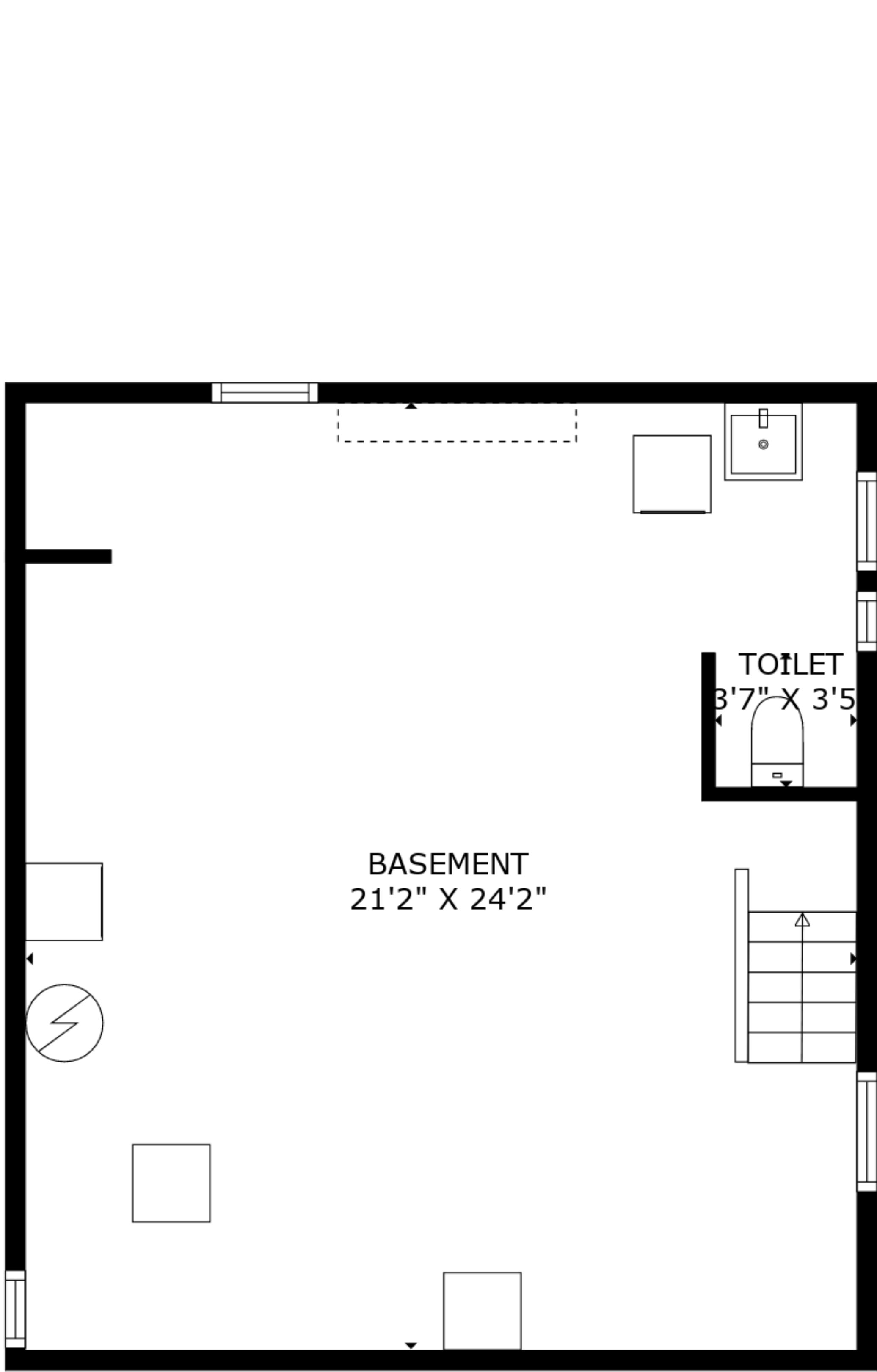


TOTAL: 1329 sq. ft

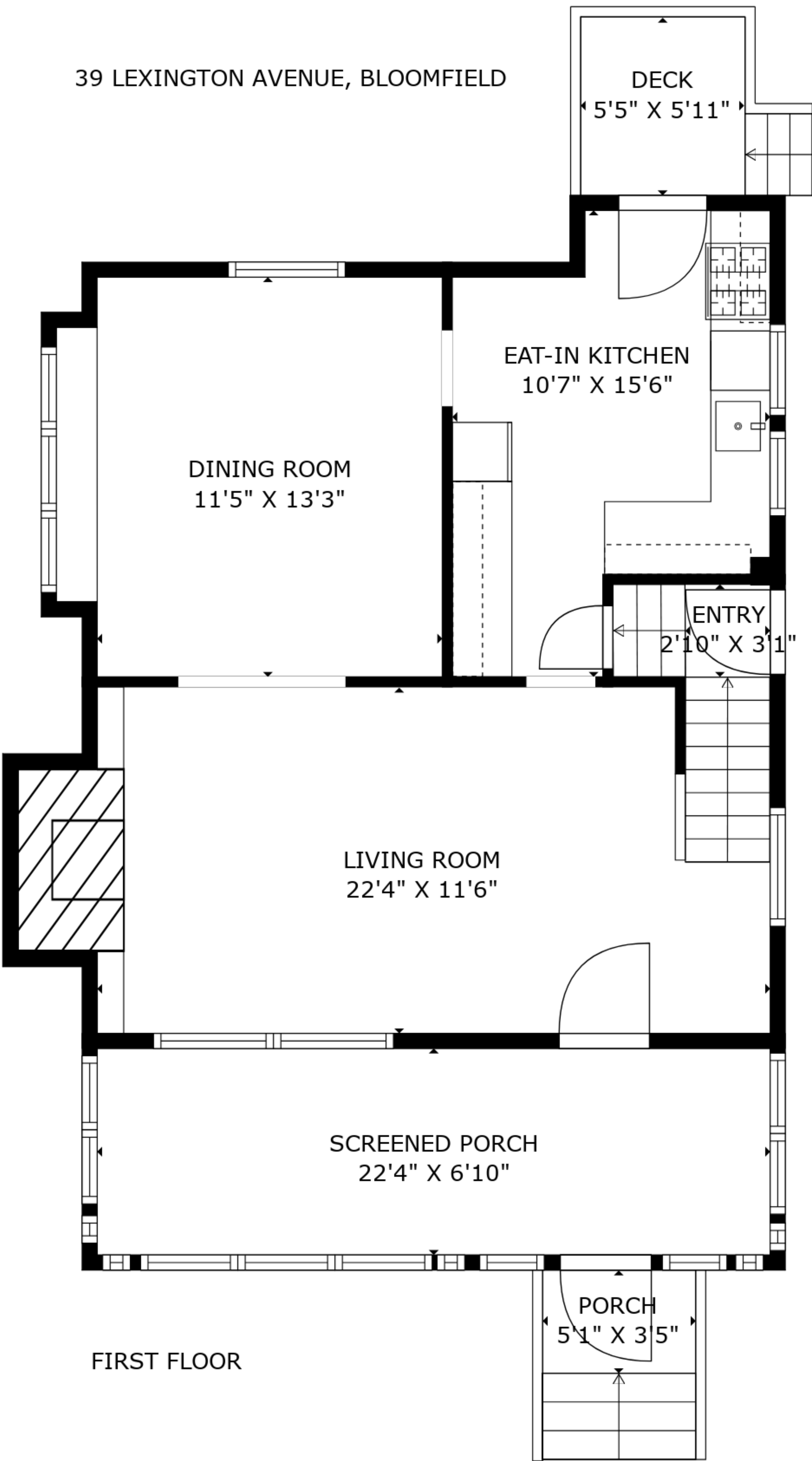
BELOW GROUND: 0 sq. ft, FIRST FLOOR: 603 sq. ft, SECOND FLOOR: 597 sq. ft, THIRD FLOOR: 129 sq. ft
EXCLUDED AREAS: BASEMENT: 500 sq. ft, TOILET: 12 sq. ft, SCREENED PORCH: 153 sq. ft,
PORCH: 32 sq. ft, DECK: 38 sq. ft, FIREPLACE: 19 sq. ft,
LOW CEILING: 342 sq. ft, ATTIC: 133 sq. ft
WALLS: 203 sq. ft

Measurements Are Deemed Highly Reliable But Not Guaranteed

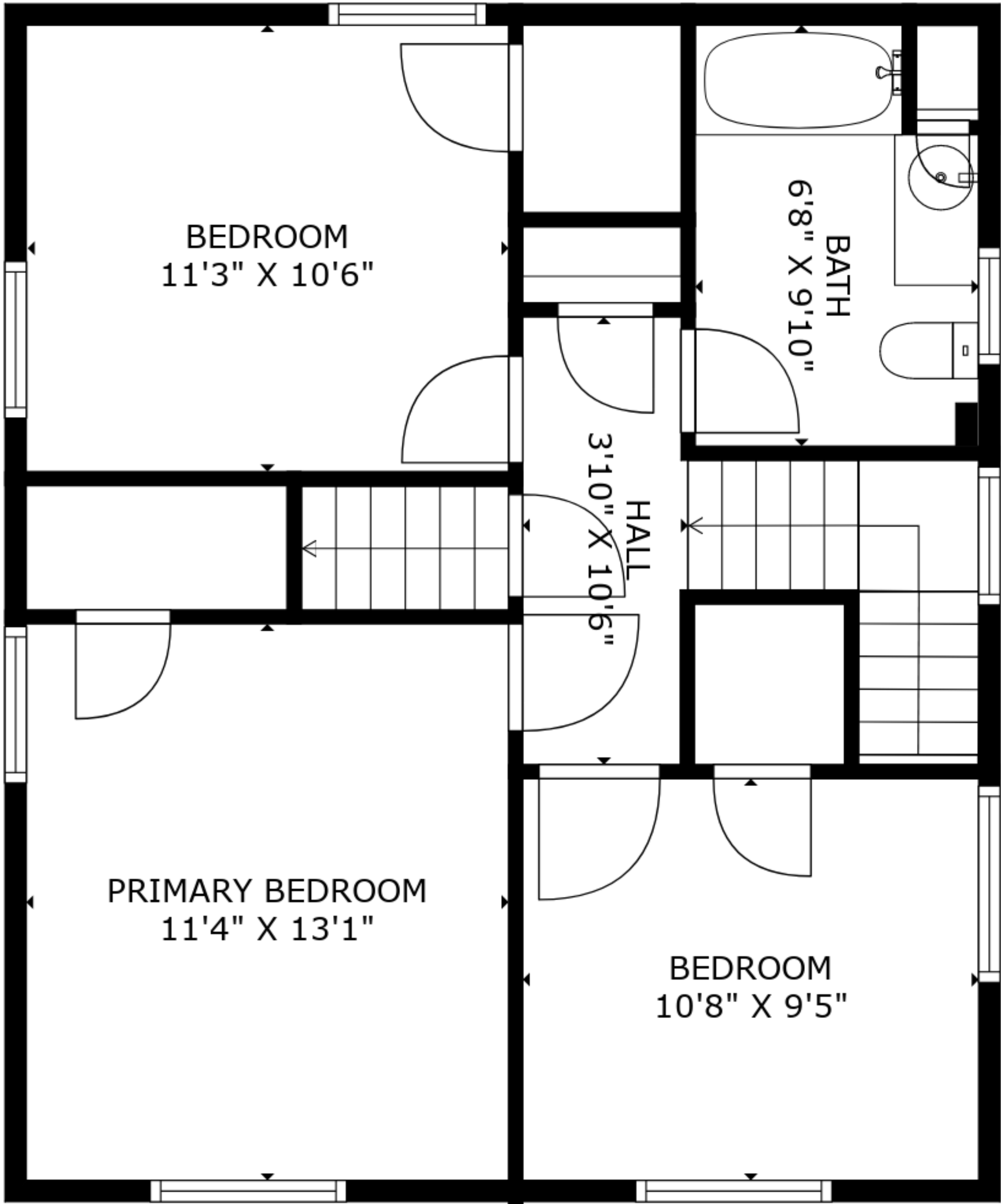
39 LEXINGTON AVENUE, BLOOMFIELD



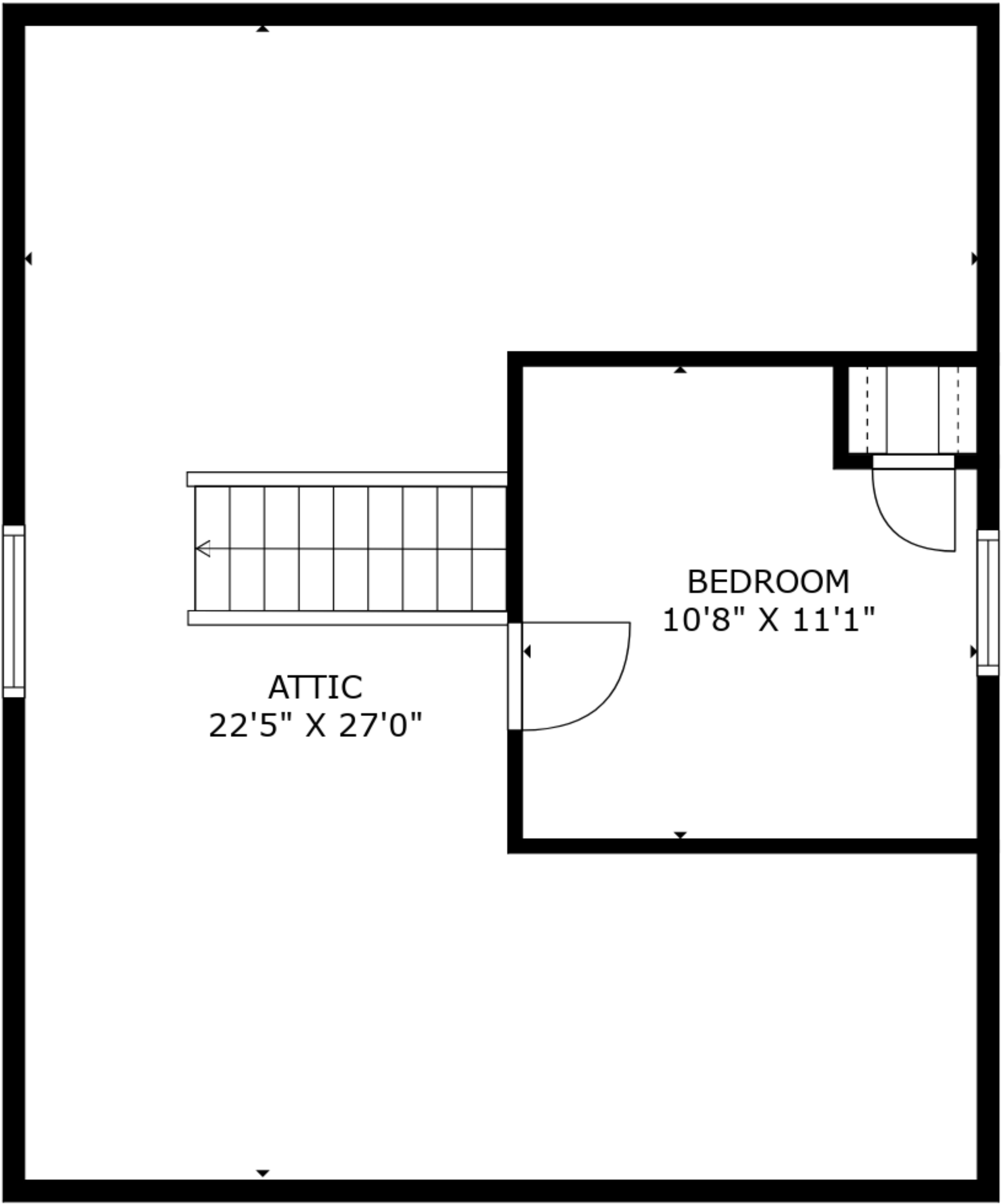
LOWER LEVEL



FIRST FLOOR



SECOND FLOOR



THIRD FLOOR

TOTAL: 1329 sq. ft
BELOW GROUND: 0 sq. ft, FIRST FLOOR: 603 sq. ft, SECOND FLOOR: 597 sq. ft, THIRD FLOOR: 129 sq. ft
EXCLUDED AREAS: BASEMENT: 500 sq. ft, TOILET: 12 sq. ft, SCREENED PORCH: 153 sq. ft,
PORCH: 32 sq. ft, DECK: 38 sq. ft, FIREPLACE: 19 sq. ft,
LOW CEILING: 342 sq. ft, ATTIC: 133 sq. ft
WALLS: 203 sq. ft