



2030 Scioto Pl, Meridian, ID, US



Property summary

 **1** Garages

 **3** Bedrooms

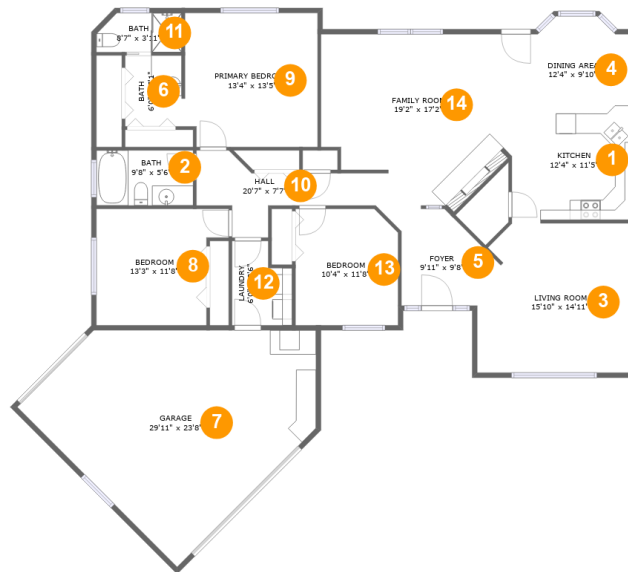
 **2** Bathrooms

 **0** Half baths

 **1** Floors

 **1,786**
Gross living
area sqft

 **2,275**
Total sqft

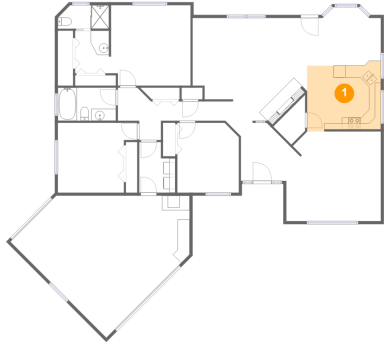
2030 Scioto Pl, Meridian, ID, US**Room dimensions****Floor 1****Total sqft: 2275 Living area: 1786**

#		Dimensions	sqft	Counted as living area
1	Kitchen	12'4" x 11'5"	134 sq. ft	Yes
2	Bath	9'8" x 5'6"	54 sq. ft	Yes
3	Living Room	15'10" x 14'11"	223 sq. ft	Yes
4	Dining Area	12'4" x 9'10"	107 sq. ft	Yes
5	Foyer	9'11" x 9'8"	76 sq. ft	Yes
6	Bath	6'0" x 7'1"	41 sq. ft	Yes
7	Garage	29'11" x 23'8"	456 sq. ft	No
8	Bedroom	13'3" x 11'8"	135 sq. ft	Yes
9	Primary Bedroom	13'4" x 13'5"	177 sq. ft	Yes
10	Hall	20'7" x 7'7"	92 sq. ft	Yes
11	Bath	8'7" x 3'11"	31 sq. ft	Yes

2030 Scioto Pl, Meridian, ID, US

#		Dimensions	sqft	Counted as living area
12	Laundry	6'0" x 8'6"	44 sq. ft	Yes
13	Bedroom	10'4" x 11'8"	117 sq. ft	Yes
14	Family Room	19'2" x 17'2"	316 sq. ft	Yes

1 Floor 1 - Kitchen



Dimensions: 12'4" x 11'5"
Area: 134 sq. ft
Counted as living area: Yes

Heated: Yes
Finished: Yes
Enclosed: Yes
Contiguous: Yes
Permitted: Yes
Wet space: No
Addition: No
Conversion: No

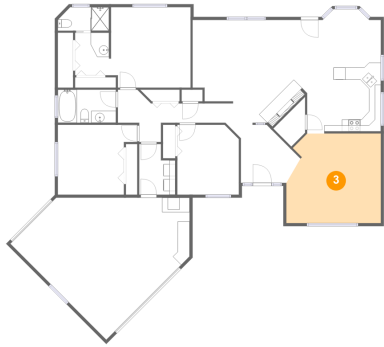
2 Floor 1 - Bath



Dimensions: 9'8" x 5'6"
Area: 54 sq. ft
Counted as living area: Yes

Heated: Yes
Finished: Yes
Enclosed: Yes
Contiguous: Yes
Permitted: Yes
Wet space: Yes
Addition: No
Conversion: No

3 Floor 1 - Living Room



Dimensions: 15'10" x 14'11"
Area: 223 sq. ft
Counted as living area: Yes

Heated: Yes
Finished: Yes
Enclosed: Yes
Contiguous: Yes
Permitted: Yes
Wet space: No
Addition: No
Conversion: No

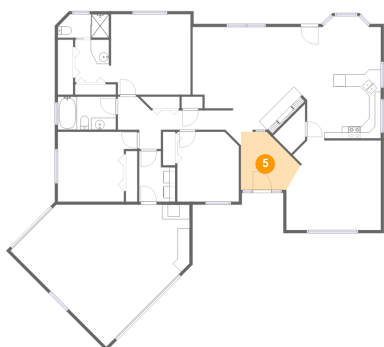
4 Floor 1 - Dining Area



Dimensions: 12'4" x 9'10"
Area: 107 sq. ft
Counted as living area: Yes

Heated: Yes
Finished: Yes
Enclosed: Yes
Contiguous: Yes
Permitted: Yes
Wet space: No
Addition: No
Conversion: No

5 Floor 1 - Foyer



Dimensions: 9'11" x 9'8"
Area: 76 sq. ft
Counted as living area: Yes

Heated: Yes
Finished: Yes
Enclosed: Yes
Contiguous: Yes
Permitted: Yes
Wet space: No
Addition: No
Conversion: No

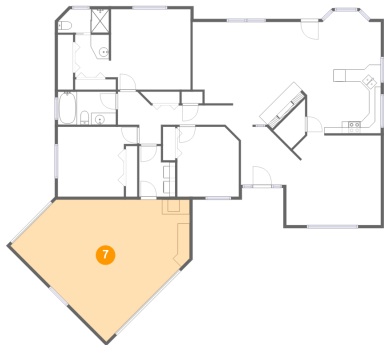
6 Floor 1 - Bath



Dimensions: 6'0" x 7'1"
Area: 41 sq. ft
Counted as living area: Yes

Heated: Yes
Finished: Yes
Enclosed: Yes
Contiguous: Yes
Permitted: Yes
Wet space: Yes
Addition: No
Conversion: No

7 Floor 1 - Garage



Dimensions: 29'11" x 23'8"
Area: 456 sq. ft
Counted as living area: No

Heated: No
Finished: No
Enclosed: Yes
Contiguous: Yes
Permitted: Yes
Wet space: No
Addition: No
Conversion: No

8 Floor 1 - Bedroom



Dimensions: 13'3" x 11'8"
Area: 135 sq. ft
Counted as living area: Yes

Heated: Yes
Finished: Yes
Enclosed: Yes
Contiguous: Yes
Permitted: Yes
Wet space: No
Addition: No
Conversion: No

2030 Scioto Pl, Meridian, ID, US

9 Floor 1 - Primary Bedroom



Dimensions: 13'4" x 13'5"
Area: 177 sq. ft
Counted as living area: Yes

Heated: Yes
Finished: Yes
Enclosed: Yes
Contiguous: Yes
Permitted: Yes
Wet space: No
Addition: No
Conversion: No

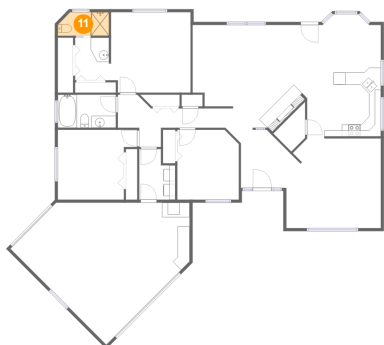
10 Floor 1 - Hall



Dimensions: 20'7" x 7'7"
Area: 92 sq. ft
Counted as living area: Yes

Heated: Yes
Finished: Yes
Enclosed: Yes
Contiguous: Yes
Permitted: Yes
Wet space: No
Addition: No
Conversion: No

11 Floor 1 - Bath



Dimensions: 8'7" x 3'11"
Area: 31 sq. ft
Counted as living area: Yes

Heated: Yes
Finished: Yes
Enclosed: Yes
Contiguous: Yes
Permitted: Yes
Wet space: Yes
Addition: No
Conversion: No

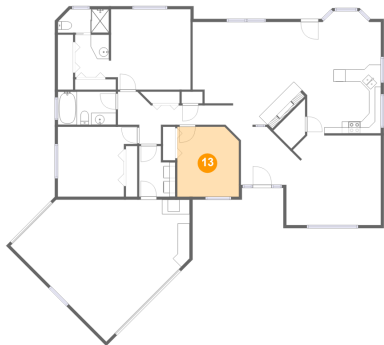
12 Floor 1 - Laundry



Dimensions: 6'0" x 8'6"
Area: 44 sq. ft
Counted as living area: Yes

Heated: Yes
Finished: Yes
Enclosed: Yes
Contiguous: Yes
Permitted: Yes
Wet space: No
Addition: No
Conversion: No

13 Floor 1 - Bedroom



Dimensions: 10'4" x 11'8"
Area: 117 sq. ft
Counted as living area: Yes

Heated: Yes
Finished: Yes
Enclosed: Yes
Contiguous: Yes
Permitted: Yes
Wet space: No
Addition: No
Conversion: No

14 Floor 1 - Family Room



Dimensions: 19'2" x 17'2"
Area: 316 sq. ft
Counted as living area: Yes

Heated: Yes
Finished: Yes
Enclosed: Yes
Contiguous: Yes
Permitted: Yes
Wet space: No
Addition: No
Conversion: No