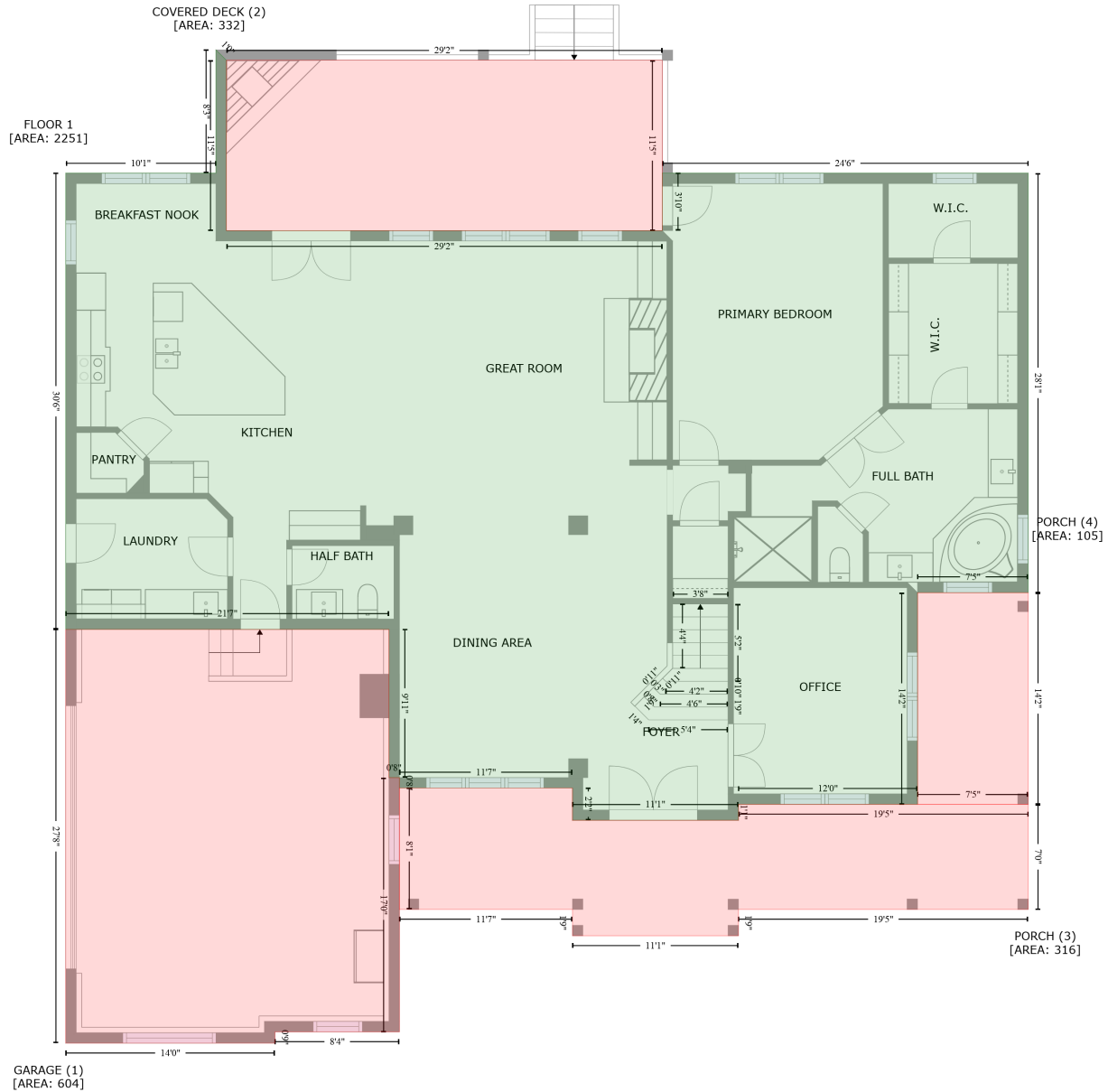


196 River Walk Trail, New Market, Madison County, Alabama, United States, 35761

Gross Living Area: 3579 sq. ft



Space	Area (sq. ft)	Calculation
FLOOR 1 (Living area)	2251	Coordinate Polygon Area Algorithm using inches $-((125.1 + 133.5) * (138.6 - 147) + (133.5 + 133.5) * (147 - 283.6) + (133.5 + 483.4) * (283.6 - 283.6) + (483.4 + 483.4) * (283.6 - 237.5) + (483.4 + 777.1) * (237.5 - 237.5) + (777.1 + 777.1) * (237.5 - 574.2) + (777.1 + 688.3) * (574.2 - 574.2) + (688.3 + 688.3) * (574.2 - 744.1) + (688.3 + 544.6) * (744.1 - 744.1) + (544.6 + 544.6) * (744.1 - 757) + (544.6 + 411.3) * (757 - 757) + (411.3 + 411.3) * (757 - 731) + (411.3 + 272.5) * (731 - 731) + (272.5 + 272.5) * (731 - 722.7) + (272.5 + 264.1) * (722.7 - 722.7) + (264.1 + 264.1) * (722.7 - 603.7) + (264.1 + 4.6) * (603.7 - 603.7) + (4.6 + 4.6) * (603.7 - 237.5) + (4.6 + 125.1) * (237.5 - 237.5) + (125.1 + 125.1) * (237.5 - 138.6)) * 0.5$

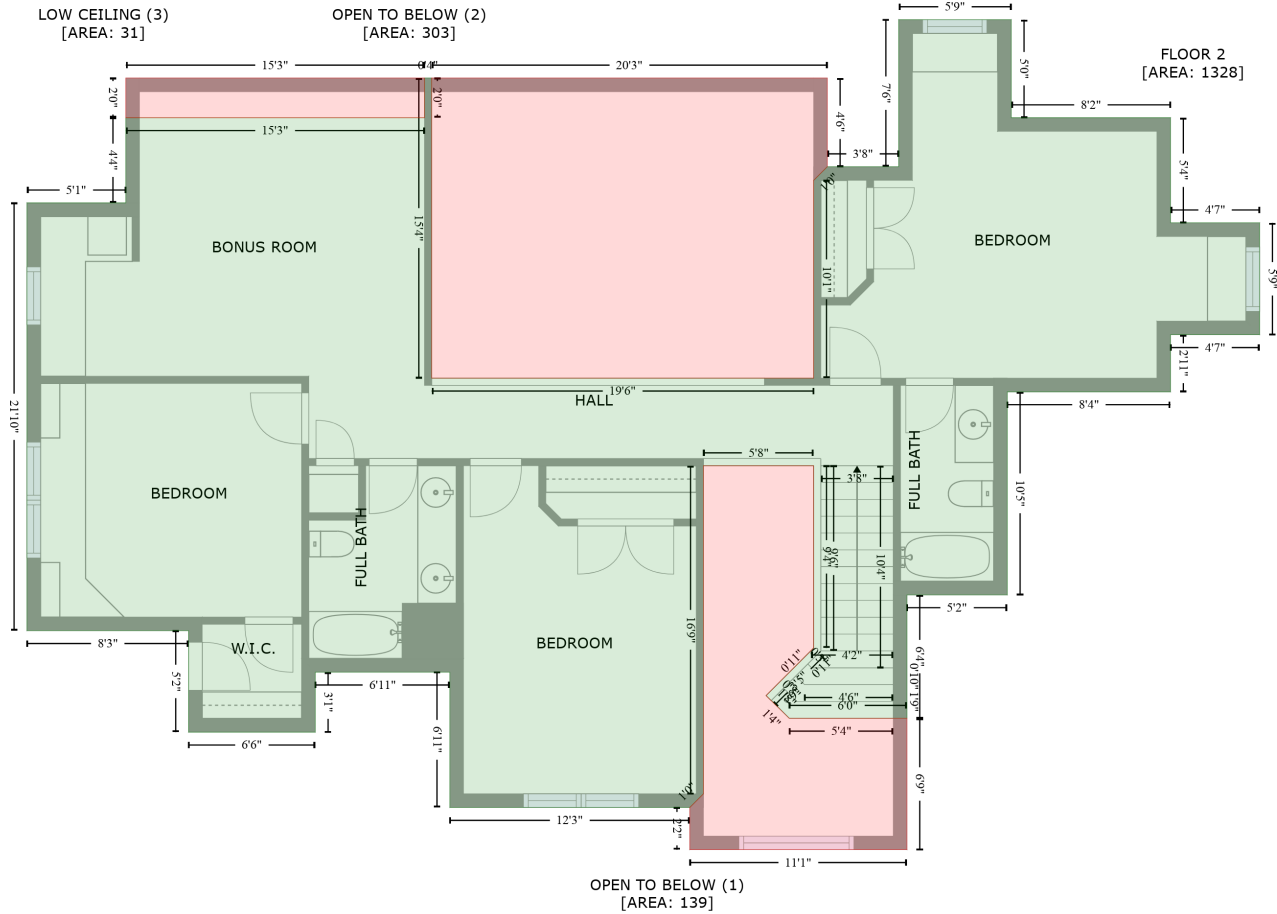
196 River Walk Trail, New Market, Madison County, Alabama, United States, 35761

Gross Living Area: 3579 sq. ft

Space	Area (sq. ft)	Calculation <small>Coordinate Polygon Area Algorithm using inches</small>
		* 0.00694
GARAGE (Non-living area)	604	$-\left((264.1 + 264.1) * (603.7 - 722.7) + (264.1 + 272.5) * (722.7 - 722.7) + (272.5 + 272.5) * (722.7 - 926.7) + (272.5 + 172.5) * (926.7 - 926.7) + (172.5 + 172.5) * (926.7 - 935.8) + (172.5 + 4.6) * (935.8 - 935.8) + (4.6 + 4.6) * (935.8 - 603.7) + (4.6 + 264.1) * (603.7 - 603.7)\right) * 0.5 * 0.00694$
COVERED DECK (Non-living area)	332	$-\left((483.4 + 483.4) * (147 - 283.6) + (483.4 + 133.5) * (283.6 - 283.6) + (133.5 + 133.5) * (283.6 - 147) + (133.5 + 483.4) * (147 - 147)\right) * 0.5 * 0.00694$
PORCH (Non-living area)	316	$-\left((411.3 + 411.3) * (731 - 757) + (411.3 + 544.6) * (757 - 757) + (544.6 + 544.6) * (757 - 744.1) + (544.6 + 777.1) * (744.1 - 744.1) + (777.1 + 777.1) * (744.1 - 828.4) + (777.1 + 544.6) * (828.4 - 828.4) + (544.6 + 544.6) * (828.4 - 849.6) + (544.6 + 411.3) * (849.6 - 849.6) + (411.3 + 411.3) * (849.6 - 828.4) + (411.3 + 272.5) * (828.4 - 828.4) + (272.5 + 272.5) * (828.4 - 731) + (272.5 + 411.3) * (731 - 731)\right) * 0.5 * 0.00694$
PORCH (Non-living area)	105	$-\left((777.1 + 777.1) * (574.2 - 744.1) + (777.1 + 688.3) * (744.1 - 744.1) + (688.3 + 688.3) * (744.1 - 574.2) + (688.3 + 777.1) * (574.2 - 574.2)\right) * 0.5 * 0.00694$

196 River Walk Trail, New Market, Madison County, Alabama, United States, 35761

Gross Living Area: 3579 sq. ft



Space	Area (sq. ft)	Calculation
FLOOR 2 (Living area)	1328	Coordinate Polygon Area Algorithm using inches $-((608.5 + 608.5) * (247.8 - 308) + (608.5 + 706.3) * (308 - 308) + (706.3 + 706.3) * (308 - 372.4) + (706.3 + 760.9) * (372.4 - 372.4) + (760.9 + 760.9) * (372.4 - 441.1) + (760.9 + 706.3) * (441.1 - 441.1) + (706.3 + 706.3) * (441.1 - 476.1) + (706.3 + 606.1) * (476.1 - 476.1) + (606.1 + 606.1) * (476.1 - 600.6) + (606.1 + 544.6) * (600.6 - 600.6) + (544.6 + 544.6) * (600.6 - 676.3) + (544.6 + 472.3) * (676.3 - 676.3) + (472.3 + 458.1) * (676.3 - 662.4) + (458.1 + 487.3) * (662.4 - 633.2) + (487.3 + 487.3) * (633.2 - 521.4) + (487.3 + 419.7) * (521.4 - 521.4) + (419.7 + 419.7) * (521.4 - 722.7) + (419.7 + 411.3) * (722.7 - 731) + (411.3 + 264.1) * (731 - 731) + (264.1 + 264.1) * (731 - 648) + (264.1 + 181.5) * (648 - 648) + (181.5 + 181.5) * (648 - 684.8) + (181.5 + 103.8) * (684.8 - 684.8) + (103.8 + 103.8) * (684.8 - 622.6) + (103.8 + 4.6) * (622.6 - 622.6) + (4.6 + 4.6) * (622.6 - 360.2) + (4.6 + 65.3) * (360.2 - 360.2) + (65.3 + 65.3) * (360.2 - 308) + (65.3 + 248.5) * (308 - 308) + (248.5 + 248.5) * (308 - 283.6) + (248.5 + 252.9) * (283.6 - 283.6) + (252.9 + 252.9) * (283.6 - 467.7) + (252.9 + 487.3) * (467.7 - 467.7) + (487.3 + 487.3) * (467.7 - 346.4) + (487.3 + 495.7) * (346.4 - 338) + (495.7 + 539.5) * (338 - 338) + (539.5 + 539.5) * (338 - 247.8) + (539.5 + 608.5) * (247.8 - 247.8)) * 0.5 * 0.00694$
OPEN TO BELOW (Non-living area)	139	$-((487.3 + 487.3) * (521.4 - 633.2) + (487.3 + 458.1) * (633.2 - 662.4) + (458.1 + 472.3) * (662.4 - 676.3) + (472.3 + 544.6) * (676.3 - 676.3) + (544.6 + 544.6) * (676.3 - 757) + (544.6 + 411.3) * (757 - 757) + (411.3 + 411.3) * (757 - 731) + (411.3 + 419.7) * (731 - 722.7) + (419.7 + 419.7) * (722.7 - 521.4) + (419.7 + 487.3) * (521.4 - 521.4)) * 0.5 * 0.00694$

196 River Walk Trail, New Market, Madison County, Alabama, United States, 35761

Gross Living Area: 3579 sq. ft

Space	Area (sq. ft)	Calculation <small>Coordinate Polygon Area Algorithm using inches</small>
OPEN TO BELOW (Non-living area)	303	$-((495.7 + 495.7) * (283.6 - 338) + (495.7 + 487.3) * (338 - 346.4) + (487.3 + 487.3) * (346.4 - 467.7) + (487.3 + 252.9) * (467.7 - 467.7) + (252.9 + 252.9) * (467.7 - 283.6) + (252.9 + 495.7) * (283.6 - 283.6)) * 0.5 * 0.00694$
LOW CEILING (Non-living area)	31	$-((248.5 + 248.5) * (283.6 - 308) + (248.5 + 65.3) * (308 - 308) + (65.3 + 65.3) * (308 - 283.6) + (65.3 + 248.5) * (283.6 - 283.6)) * 0.5 * 0.00694$