

Home report

7027 Linn Drive, Lemonton, Hollins, Roanoke, Roanoke County,
Virginia, United States, 24019



Total Area: 2799 sq. ft
Floor 1: 764 sq. ft, Floor 2: 908 sq. ft, Floor 3: 1127 sq. ft
Excluded: Undefined 29 sq. ft, Utility 49 sq. ft, Patio 488 sq. ft, Garage 344 sq. ft, Porch 47 sq. ft, Deck 185 sq. ft, Walls: 229 sq. ft

Property summary

**3**
Floors

**6**
Bedrooms

**2**
Bathrooms

Home report

**7027 Linn Drive, Lemonton, Hollins, Roanoke, Roanoke County,
Virginia, United States, 24019**



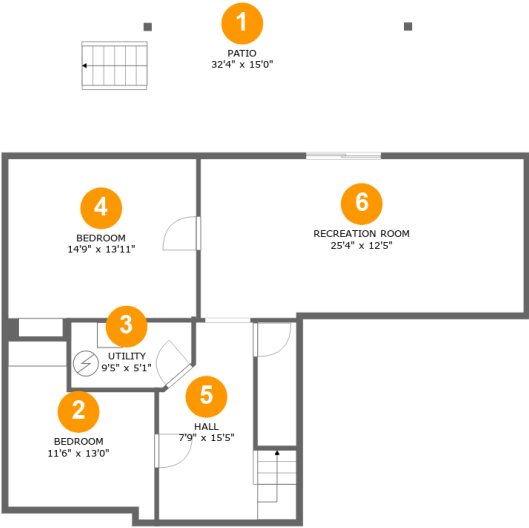
1
Half baths



1
Garages

Home report

7027 Linn Drive, Lemonton, Hollins, Roanoke, Roanoke County,
Virginia, United States, 24019



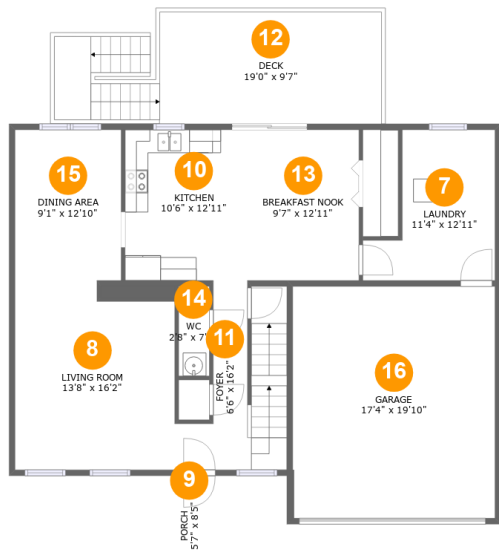
Room dimensions

Floor 1 Total:764sqft Excluded: 566sqft

#		Max Dimensions	sqft	Included
1	Patio	32'4" x 15'0"	488 sq. ft	No
2	Bedroom	11'6" x 13'0"	123 sq. ft	Yes
3	Utility	9'5" x 5'1"	46 sq. ft	No
4	Bedroom	14'9" x 13'11"	190 sq. ft	Yes
5	Hall	7'9" x 15'5"	120 sq. ft	Yes
6	Recreation Room	25'4" x 12'5"	308 sq. ft	Yes

Home report

7027 Linn Drive, Lemonton, Hollins, Roanoke, Roanoke County,
Virginia, United States, 24019



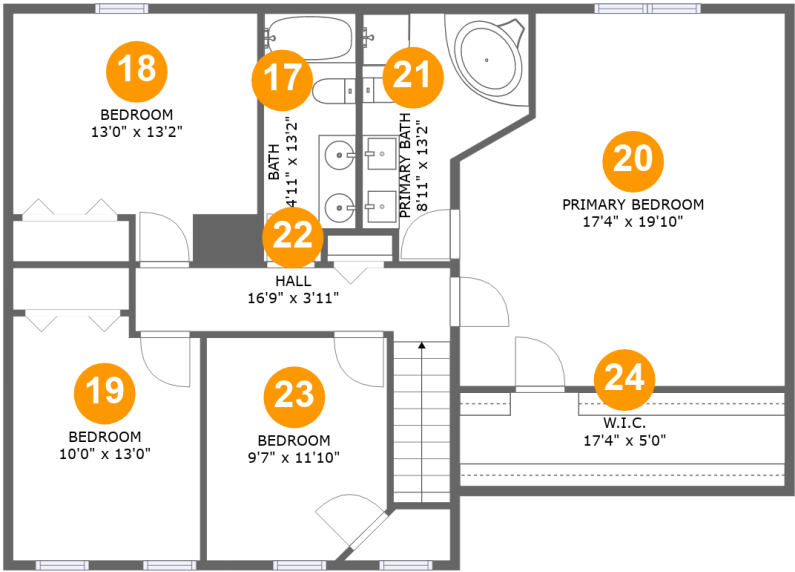
Room dimensions

Floor 2 Total:908sqft Excluded: 576sqft

#		Max Dimensions	sqft	Included
7	Laundry	11'4" x 12'11"	114 sq. ft	Yes
8	Living Room	13'8" x 16'2"	210 sq. ft	Yes
9	Porch	5'7" x 8'5"	47 sq. ft	No
10	Kitchen	10'6" x 12'11"	135 sq. ft	Yes
11	Foyer	6'6" x 16'2"	110 sq. ft	Yes
12	Deck	19'0" x 9'7"	185 sq. ft	No
13	Breakfast Nook	9'7" x 12'11"	123 sq. ft	Yes
14	WC	2'8" x 7'8"	20 sq. ft	Yes
15	Dining Area	9'1" x 12'10"	117 sq. ft	Yes
16	Garage	17'4" x 19'10"	344 sq. ft	No

Home report

7027 Linn Drive, Lemonton, Hollins, Roanoke, Roanoke County,
Virginia, United States, 24019

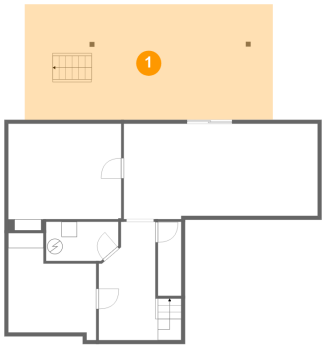


Room dimensions

Floor 3 Total:1127sqft Excluded: 0sqft

#		Max Dimensions	sqft	Included
17	Bath	4'11" x 13'2"	62 sq. ft	Yes
18	Bedroom	13'0" x 13'2"	147 sq. ft	Yes
19	Bedroom	10'0" x 13'0"	125 sq. ft	Yes
20	Primary Bedroom	17'4" x 19'10"	317 sq. ft	Yes
21	Primary Bath	8'11" x 13'2"	86 sq. ft	Yes
22	Hall	16'9" x 3'11"	84 sq. ft	Yes
23	Bedroom	9'7" x 11'10"	110 sq. ft	Yes
24	W.I.C.	17'4" x 5'0"	87 sq. ft	Yes

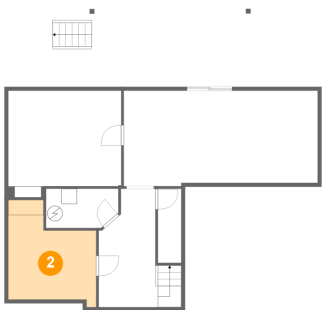
1 Floor 1 - Patio



Max Dimensions: 32'4" x 15'0"
Calculated Area: 488 sq. ft
Included: No

Heated: No
Finished: Yes
Enclosed: No
Contiguous: Yes
Permitted: Yes
Wet space: No
Addition: No
Conversion: No

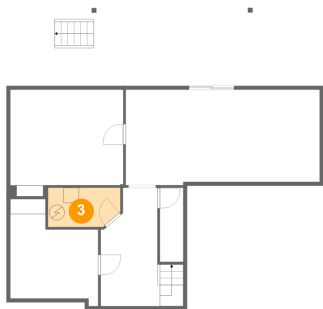
2 Floor 1 - Bedroom



Max Dimensions: 11'6" x 13'0"
Calculated Area: 123 sq. ft
Included: Yes

Heated: Yes
Finished: Yes
Enclosed: Yes
Contiguous: Yes
Permitted: Yes
Wet space: No
Addition: No
Conversion: No

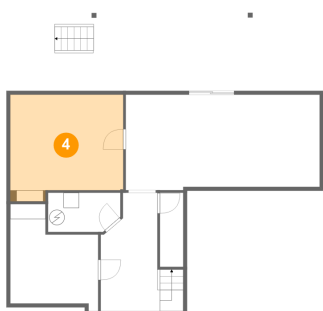
3 Floor 1 - Utility



Max Dimensions: 9'5" x 5'1"
Calculated Area: 46 sq. ft
Included: No

Heated: Yes
Finished: No
Enclosed: Yes
Contiguous: Yes
Permitted: Yes
Wet space: No
Addition: No
Conversion: No

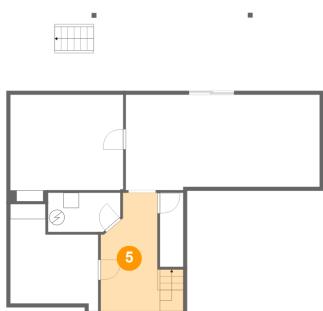
4 Floor 1 - Bedroom



Max Dimensions: 14'9" x 13'11"
Calculated Area: 190 sq. ft
Included: Yes

Heated: Yes
Finished: Yes
Enclosed: Yes
Contiguous: Yes
Permitted: Yes
Wet space: No
Addition: No
Conversion: No

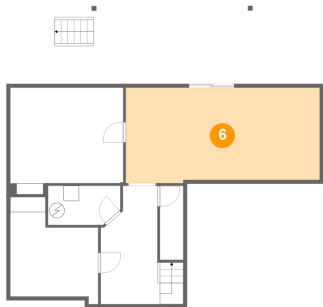
5 Floor 1 - Hall



Max Dimensions: 7'9" x 15'5"
Calculated Area: 120 sq. ft
Included: Yes

Heated: Yes
Finished: Yes
Enclosed: Yes
Contiguous: Yes
Permitted: Yes
Wet space: No
Addition: No
Conversion: No

6 Floor 1 - Recreation Room



Max Dimensions: 25'4" x 12'5"
Calculated Area: 308 sq. ft
Included: Yes

Heated: Yes
Finished: Yes
Enclosed: Yes
Contiguous: Yes
Permitted: Yes
Wet space: No
Addition: No
Conversion: No

7 Floor 2 - Laundry



Max Dimensions: 11'4" x 12'11"
Calculated Area: 114 sq. ft
Included: Yes

Heated: Yes
Finished: Yes
Enclosed: Yes
Contiguous: Yes
Permitted: Yes
Wet space: No
Addition: No
Conversion: No

8 Floor 2 - Living Room



Max Dimensions: 13'8" x 16'2"
Calculated Area: 210 sq. ft
Included: Yes

Heated: Yes
Finished: Yes
Enclosed: Yes
Contiguous: Yes
Permitted: Yes
Wet space: No
Addition: No
Conversion: No

7027 Linn Drive, Lemonton, Hollins, Roanoke, Roanoke County,
Virginia, United States, 24019

9 Floor 2 - Porch



Max Dimensions: 5'7" x 8'5"
Calculated Area: 47 sq. ft
Included: No

Heated: No
Finished: Yes
Enclosed: No
Contiguous: Yes
Permitted: Yes
Wet space: No
Addition: No
Conversion: No

10 Floor 2 - Kitchen



Max Dimensions: 10'6" x 12'11"
Calculated Area: 135 sq. ft
Included: Yes

Heated: Yes
Finished: Yes
Enclosed: Yes
Contiguous: Yes
Permitted: Yes
Wet space: No
Addition: No
Conversion: No

11 Floor 2 - Foyer



Max Dimensions: 6'6" x 16'2"
Calculated Area: 110 sq. ft
Included: Yes

Heated: Yes
Finished: Yes
Enclosed: Yes
Contiguous: Yes
Permitted: Yes
Wet space: No
Addition: No
Conversion: No

7027 Linn Drive, Lemonton, Hollins, Roanoke, Roanoke County,
Virginia, United States, 24019

12 Floor 2 - Deck



Max Dimensions: 19'0" x 9'7"
Calculated Area: 185 sq. ft
Included: No

Heated: No
Finished: Yes
Enclosed: No
Contiguous: Yes
Permitted: Yes
Wet space: No
Addition: No
Conversion: No

13 Floor 2 - Breakfast Nook



Max Dimensions: 9'7" x 12'11"
Calculated Area: 123 sq. ft
Included: Yes

Heated: Yes
Finished: Yes
Enclosed: Yes
Contiguous: Yes
Permitted: Yes
Wet space: No
Addition: No
Conversion: No

14 Floor 2 - WC



Max Dimensions: 2'8" x 7'8"
Calculated Area: 20 sq. ft
Included: Yes

Heated: Yes
Finished: Yes
Enclosed: Yes
Contiguous: Yes
Permitted: Yes
Wet space: Yes
Addition: No
Conversion: No

7027 Linn Drive, Lemonton, Hollins, Roanoke, Roanoke County,
Virginia, United States, 24019

15 Floor 2 - Dining Area



Max Dimensions: 9'1" x
12'10"
Calculated Area: 117 sq. ft
Included: Yes

Heated: Yes
Finished: Yes
Enclosed: Yes
Contiguous:
Yes
Permitted: Yes
Wet space: No
Addition: No
Conversion: No

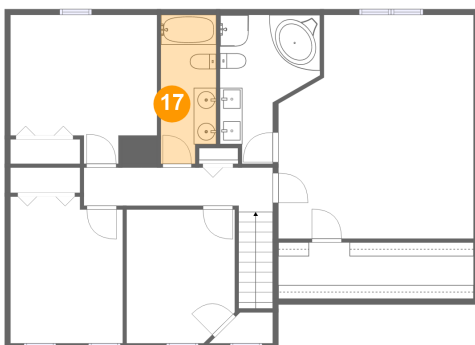
16 Floor 2 - Garage



Max Dimensions: 17'4" x
19'10"
Calculated Area: 344 sq. ft
Included: No

Heated: No
Finished: No
Enclosed: Yes
Contiguous:
Yes
Permitted: Yes
Wet space: No
Addition: No
Conversion: No

17 Floor 3 - Bath

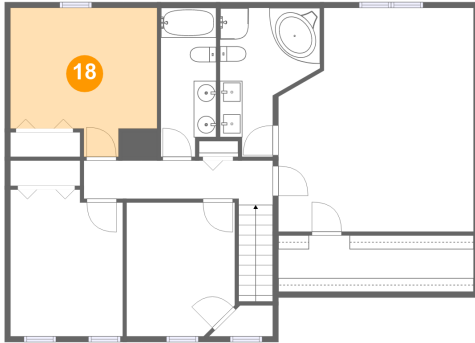


Max Dimensions: 4'11" x
13'2"
Calculated Area: 62 sq. ft
Included: Yes

Heated: Yes
Finished: Yes
Enclosed: Yes
Contiguous:
Yes
Permitted: Yes
Wet space: Yes
Addition: No
Conversion: No

7027 Linn Drive, Lemonton, Hollins, Roanoke, Roanoke County,
Virginia, United States, 24019

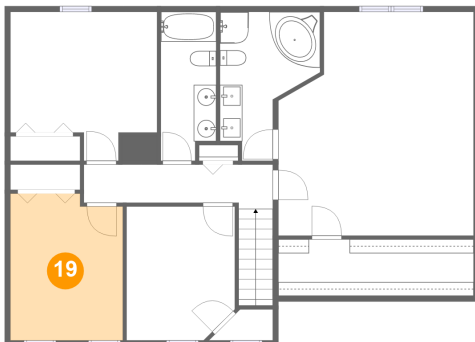
18 Floor 3 - Bedroom



Max Dimensions: 13'0" x 13'2"
Calculated Area: 147 sq. ft
Included: Yes

Heated: Yes
Finished: Yes
Enclosed: Yes
Contiguous: Yes
Permitted: Yes
Wet space: No
Addition: No
Conversion: No

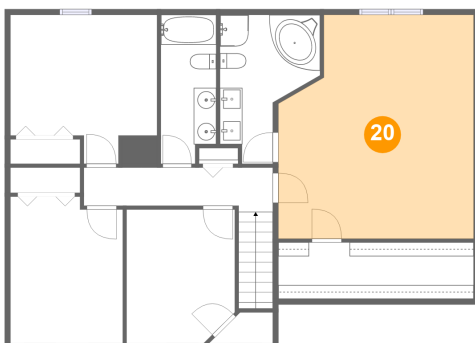
19 Floor 3 - Bedroom



Max Dimensions: 10'0" x 13'0"
Calculated Area: 125 sq. ft
Included: Yes

Heated: Yes
Finished: Yes
Enclosed: Yes
Contiguous: Yes
Permitted: Yes
Wet space: No
Addition: No
Conversion: No

20 Floor 3 - Primary Bedroom



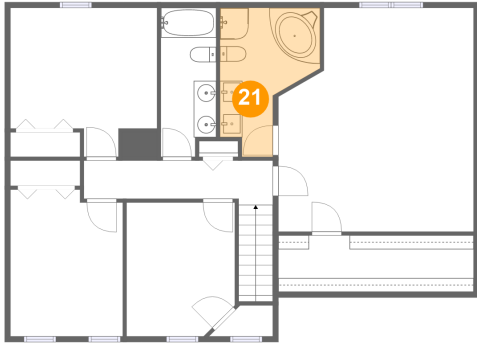
Max Dimensions: 17'4" x 19'10"
Calculated Area: 317 sq. ft
Included: Yes

Heated: Yes
Finished: Yes
Enclosed: Yes
Contiguous: Yes
Permitted: Yes
Wet space: No
Addition: No
Conversion: No

Home report

7027 Linn Drive, Lemonton, Hollins, Roanoke, Roanoke County,
Virginia, United States, 24019

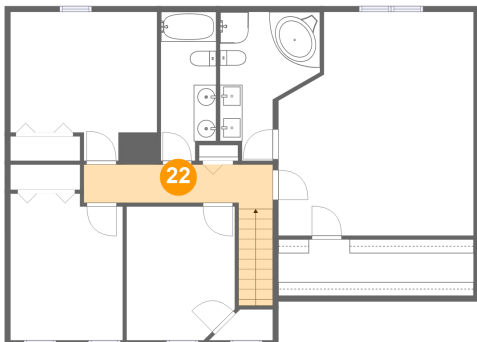
21 Floor 3 - Primary Bath



Max Dimensions: 8'11" x 13'2"
Calculated Area: 86 sq. ft
Included: Yes

Heated: Yes
Finished: Yes
Enclosed: Yes
Contiguous: Yes
Permitted: Yes
Wet space: Yes
Addition: No
Conversion: No

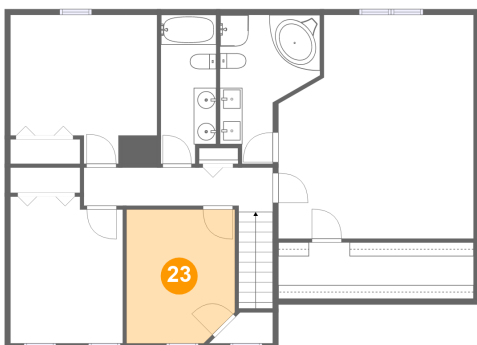
22 Floor 3 - Hall



Max Dimensions: 16'9" x 3'11"
Calculated Area: 84 sq. ft
Included: Yes

Heated: Yes
Finished: Yes
Enclosed: Yes
Contiguous: Yes
Permitted: Yes
Wet space: No
Addition: No
Conversion: No

23 Floor 3 - Bedroom



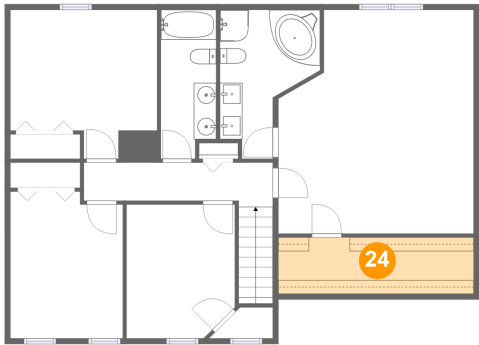
Max Dimensions: 9'7" x 11'10"
Calculated Area: 110 sq. ft
Included: Yes

Heated: Yes
Finished: Yes
Enclosed: Yes
Contiguous: Yes
Permitted: Yes
Wet space: No
Addition: No
Conversion: No

Home report

7027 Linn Drive, Lemonton, Hollins, Roanoke, Roanoke County,
Virginia, United States, 24019

24 Floor 3 - W.I.C.



Max Dimensions: 17'4" x 5'0"
Calculated Area: 87 sq. ft
Included: Yes

Heated: Yes
Finished: Yes
Enclosed: Yes
Contiguous: Yes
Permitted: Yes
Wet space: No
Addition: No
Conversion: No