



Home report


712 North 64th Street, Phinney Ridge, Seattle, King County, Washington, United States, 98103





Property summary


**0** Garages


**3** Bedrooms

**3** Bathrooms

**0** Half baths

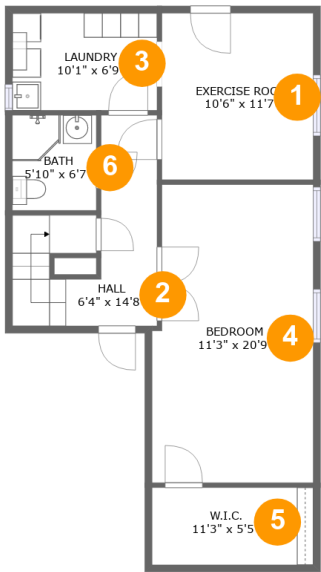
**3** Floors

**2,102** Gross living area sqft

**2,623** Total sqft

Home report

712 North 64th Street, Phinney Ridge, Seattle, King County,
Washington, United States, 98103



Room dimensions

Floor 1 Total sqft: 702 Living area: 702

#		Dimensions	sqft	Counted as living area
1	Exercise Room	10'6" x 11'7"	122 sq. ft	Yes
2	Hall	6'4" x 14'8"	97 sq. ft	Yes
3	Laundry	10'1" x 6'9"	68 sq. ft	Yes
4	Bedroom	11'3" x 20'9"	226 sq. ft	Yes
5	W.I.C.	11'3" x 5'5"	60 sq. ft	Yes
6	Bath	5'10" x 6'7"	39 sq. ft	Yes

Home report

712 North 64th Street, Phinney Ridge, Seattle, King County, Washington, United States, 98103



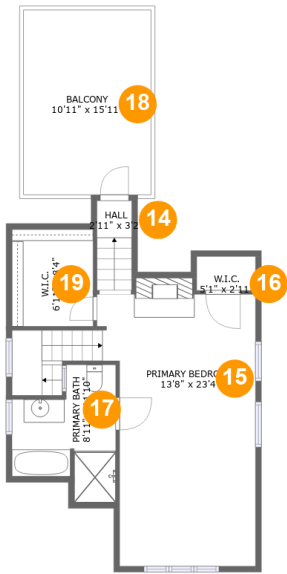
Room dimensions

Floor 2 Total sqft: 1176 Living area: 865

#		Dimensions	sqft	Counted as living area
7	Bath	7'9" x 6'0"	39 sq. ft	Yes
8	Living Room	20'11" x 12'0"	258 sq. ft	Yes
9	Hall	5'9" x 12'8"	48 sq. ft	Yes
10	Eat-in Kitchen	9'3" x 14'9"	137 sq. ft	Yes
11	Dining Room	9'3" x 10'11"	101 sq. ft	Yes
12	Deck	23'3" x 20'4"	303 sq. ft	No
13	Bedroom	11'4" x 10'7"	120 sq. ft	Yes

Home report

712 North 64th Street, Phinney Ridge, Seattle, King County,
Washington, United States, 98103



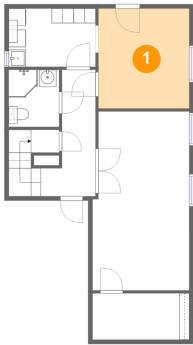
Room dimensions

Floor 3 Total sqft: 745 Living area: 535

#		Dimensions	sqft	Counted as living area
14	Hall	2'11" x 3'2"	23 sq. ft	Yes
15	Primary Bedroom	13'8" x 23'4"	302 sq. ft	Yes
16	W.I.C.	5'1" x 2'11"	10 sq. ft	Yes
17	Primary Bath	8'11" x 11'10"	79 sq. ft	Yes
18	Balcony	10'11" x 15'11"	174 sq. ft	No
19	W.I.C.	6'11" x 8'4"	58 sq. ft	Yes

712 North 64th Street, Phinney Ridge, Seattle, King County,
Washington, United States, 98103

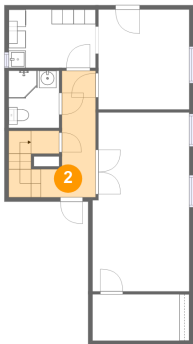
1 Floor 1 - Exercise Room



Dimensions: 10'6" x 11'7"
Area: 122 sq. ft
Counted as living area: Yes

Heated: Yes
Finished: Yes
Enclosed: Yes
Contiguous: Yes
Permitted: Yes
Wet space: No
Addition: No
Conversion: No

2 Floor 1 - Hall



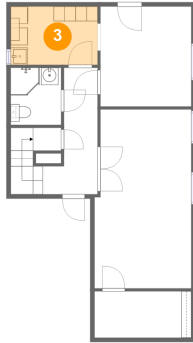
Dimensions: 6'4" x 14'8"
Area: 97 sq. ft
Counted as living area: Yes

Heated: Yes
Finished: Yes
Enclosed: Yes
Contiguous: Yes
Permitted: Yes
Wet space: No
Addition: No
Conversion: No

Home report

712 North 64th Street, Phinney Ridge, Seattle, King County,
Washington, United States, 98103

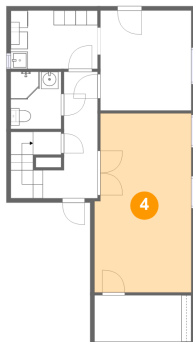
3 Floor 1 - Laundry



Dimensions: 10'1" x 6'9"
Area: 68 sq. ft
Counted as living area: Yes

Heated: Yes
Finished: Yes
Enclosed: Yes
Contiguous: Yes
Permitted: Yes
Wet space: No
Addition: No
Conversion: No

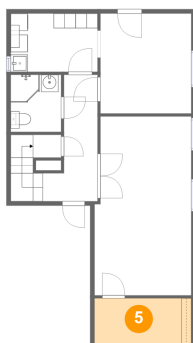
4 Floor 1 - Bedroom



Dimensions: 11'3" x 20'9"
Area: 226 sq. ft
Counted as living area: Yes

Heated: Yes
Finished: Yes
Enclosed: Yes
Contiguous: Yes
Permitted: Yes
Wet space: No
Addition: No
Conversion: No

5 Floor 1 - W.I.C.

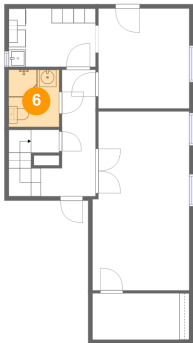


Dimensions: 11'3" x 5'5"
Area: 60 sq. ft
Counted as living area: Yes

Heated: Yes
Finished: Yes
Enclosed: Yes
Contiguous: Yes
Permitted: Yes
Wet space: No
Addition: No
Conversion: No

712 North 64th Street, Phinney Ridge, Seattle, King County,
Washington, United States, 98103

6 Floor 1 - Bath



Dimensions: 5'10" x 6'7"
Area: 39 sq. ft
Counted as living area: Yes

Heated: Yes
Finished: Yes
Enclosed: Yes
Contiguous: Yes
Permitted: Yes
Wet space: Yes
Addition: No
Conversion: No

7 Floor 2 - Bath



Dimensions: 7'9" x 6'0"
Area: 39 sq. ft
Counted as living area: Yes

Heated: Yes
Finished: Yes
Enclosed: Yes
Contiguous: Yes
Permitted: Yes
Wet space: Yes
Addition: No
Conversion: No

8 Floor 2 - Living Room



Dimensions: 20'11" x 12'0"
Area: 258 sq. ft
Counted as living area: Yes

Heated: Yes
Finished: Yes
Enclosed: Yes
Contiguous: Yes
Permitted: Yes
Wet space: No
Addition: No
Conversion: No

712 North 64th Street, Phinney Ridge, Seattle, King County,
Washington, United States, 98103

9 Floor 2 - Hall



Dimensions: 5'9" x 12'8"
Area: 48 sq. ft
Counted as living area: Yes

Heated: Yes
Finished: Yes
Enclosed: Yes
Contiguous: Yes
Permitted: Yes
Wet space: No
Addition: No
Conversion: No

10 Floor 2 - Eat-in Kitchen



Dimensions: 9'3" x 14'9"
Area: 137 sq. ft
Counted as living area: Yes

Heated: Yes
Finished: Yes
Enclosed: Yes
Contiguous: Yes
Permitted: Yes
Wet space: No
Addition: No
Conversion: No

11 Floor 2 - Dining Room



Dimensions: 9'3" x 10'11"
Area: 101 sq. ft
Counted as living area: Yes

Heated: Yes
Finished: Yes
Enclosed: Yes
Contiguous: Yes
Permitted: Yes
Wet space: No
Addition: No
Conversion: No

Home report

712 North 64th Street, Phinney Ridge, Seattle, King County,
Washington, United States, 98103

12 Floor 2 - Deck



Dimensions: 23'3" x 20'4"
Area: 303 sq. ft
Counted as living area: No

Heated: No
Finished: Yes
Enclosed: No
Contiguous: Yes
Permitted: Yes
Wet space: No
Addition: No
Conversion: No

13 Floor 2 - Bedroom



Dimensions: 11'4" x 10'7"
Area: 120 sq. ft
Counted as living area: Yes

Heated: Yes
Finished: Yes
Enclosed: Yes
Contiguous: Yes
Permitted: Yes
Wet space: No
Addition: No
Conversion: No

14 Floor 3 - Hall



Dimensions: 2'11" x 3'2"
Area: 23 sq. ft
Counted as living area: Yes

Heated: Yes
Finished: Yes
Enclosed: Yes
Contiguous: Yes
Permitted: Yes
Wet space: No
Addition: No
Conversion: No

712 North 64th Street, Phinney Ridge, Seattle, King County,
Washington, United States, 98103

15 Floor 3 - Primary Bedroom



Dimensions: 13'8" x 23'4"
Area: 302 sq. ft
Counted as living area: Yes

Heated: Yes
Finished: Yes
Enclosed: Yes
Contiguous: Yes
Permitted: Yes
Wet space: No
Addition: No
Conversion: No

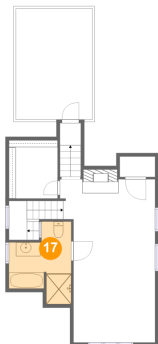
16 Floor 3 - W.I.C.



Dimensions: 5'1" x 2'11"
Area: 10 sq. ft
Counted as living area: Yes

Heated: Yes
Finished: Yes
Enclosed: Yes
Contiguous: Yes
Permitted: Yes
Wet space: No
Addition: No
Conversion: No

17 Floor 3 - Primary Bath

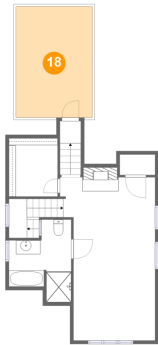


Dimensions: 8'11" x 11'10"
Area: 79 sq. ft
Counted as living area: Yes

Heated: Yes
Finished: Yes
Enclosed: Yes
Contiguous: Yes
Permitted: Yes
Wet space: Yes
Addition: No
Conversion: No

712 North 64th Street, Phinney Ridge, Seattle, King County,
Washington, United States, 98103

18 Floor 3 - Balcony



Dimensions: 10'11" x 15'11"
Area: 174 sq. ft
Counted as living area: No

Heated: No
Finished: Yes
Enclosed: No
Contiguous: Yes
Permitted: Yes
Wet space: No
Addition: No
Conversion: No

19 Floor 3 - W.I.C.



Dimensions: 6'11" x 8'4"
Area: 58 sq. ft
Counted as living area: Yes

Heated: Yes
Finished: Yes
Enclosed: Yes
Contiguous: Yes
Permitted: Yes
Wet space: No
Addition: No
Conversion: No