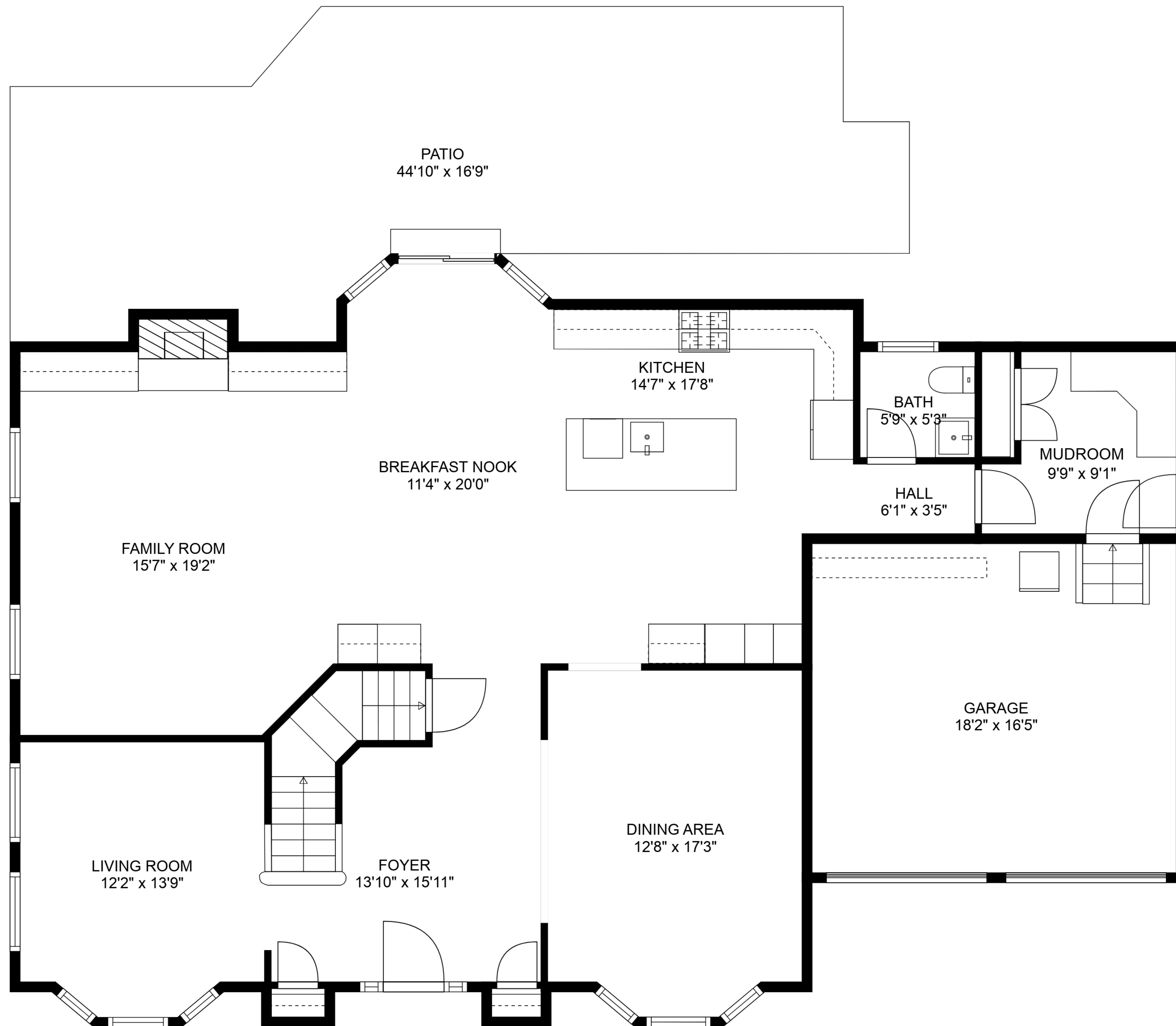
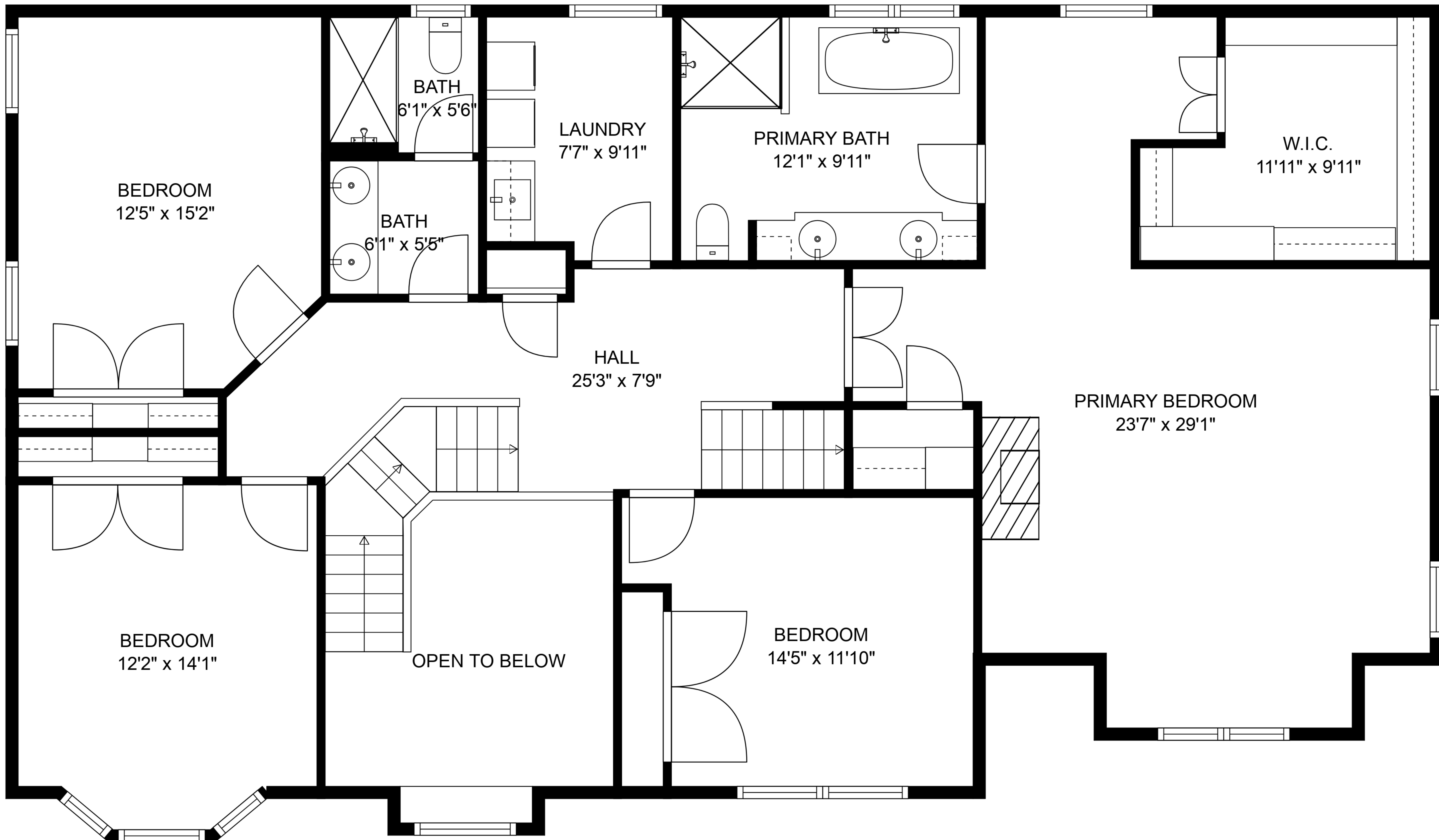


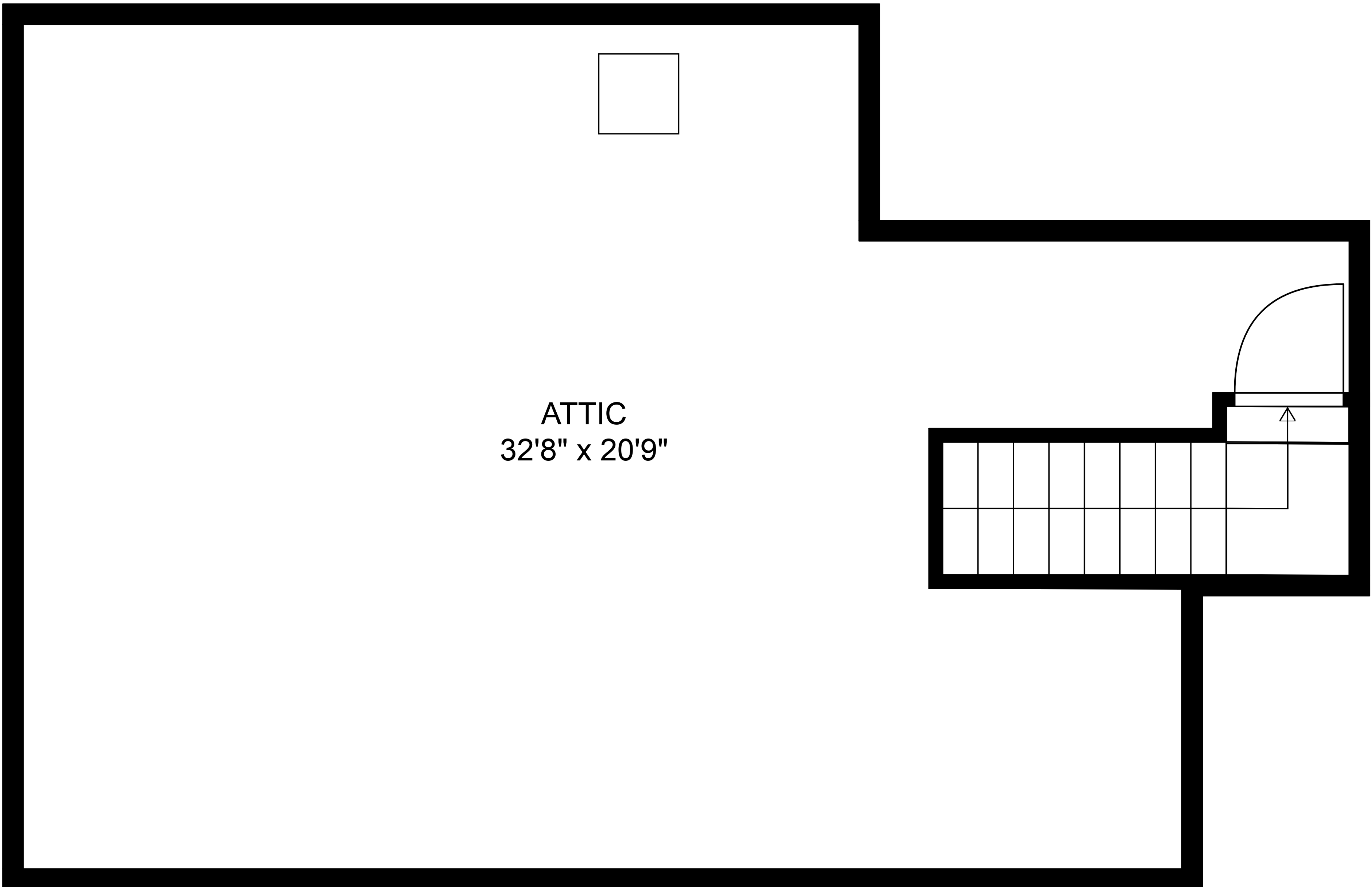
**TOTAL: 4277 sq. ft**  
 BELOW GROUND: 1093 sq. ft, FLOOR 2: 1501 sq. ft, FLOOR 3: 1640 sq. ft, FLOOR 4: 43 sq. ft  
 EXCLUDED AREAS: ELECTRICAL ROOM: 131 sq. ft, PATIO: 545 sq. ft, GARAGE: 298 sq. ft,  
 FIREPLACE: 9 sq. ft, OPEN TO BELOW: 124 sq. ft, LOW CEILING: 206 sq. ft,  
 ATTIC: 336 sq. ft



**TOTAL: 4277 sq. ft**  
 BELOW GROUND: 1093 sq. ft, FLOOR 2: 1501 sq. ft, FLOOR 3: 1640 sq. ft, FLOOR 4: 43 sq. ft  
 EXCLUDED AREAS: ELECTRICAL ROOM: 131 sq. ft, PATIO: 545 sq. ft, GARAGE: 298 sq. ft,  
 FIREPLACE: 9 sq. ft, OPEN TO BELOW: 124 sq. ft, LOW CEILING: 206 sq. ft,  
 ATTIC: 336 sq. ft



**TOTAL: 4277 sq. ft**  
 BELOW GROUND: 1093 sq. ft, FLOOR 2: 1501 sq. ft, FLOOR 3: 1640 sq. ft, FLOOR 4: 43 sq. ft  
 EXCLUDED AREAS: ELECTRICAL ROOM: 131 sq. ft, PATIO: 545 sq. ft, GARAGE: 298 sq. ft,  
 FIREPLACE: 9 sq. ft, OPEN TO BELOW: 124 sq. ft, LOW CEILING: 206 sq. ft,  
 ATTIC: 336 sq. ft

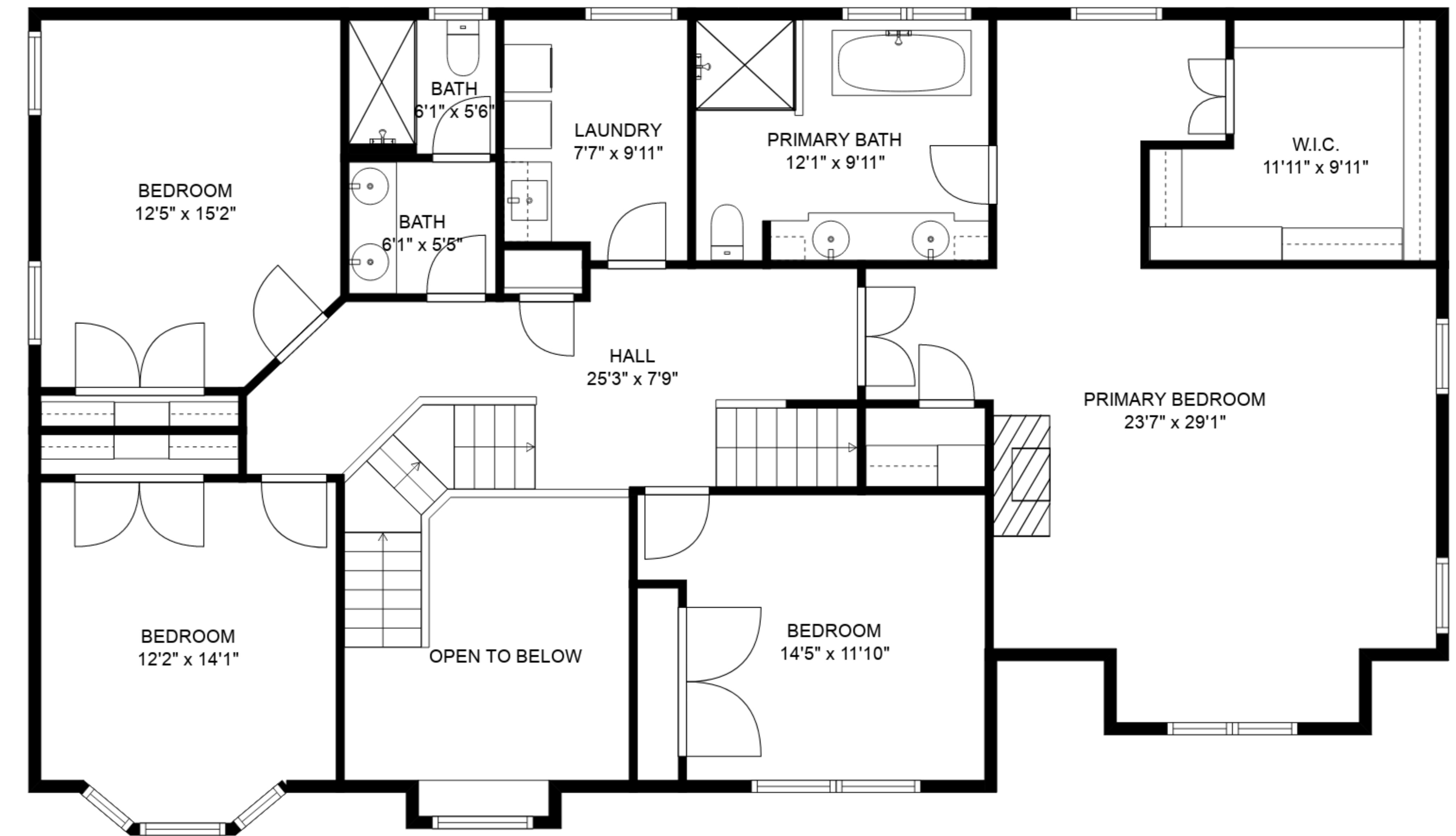
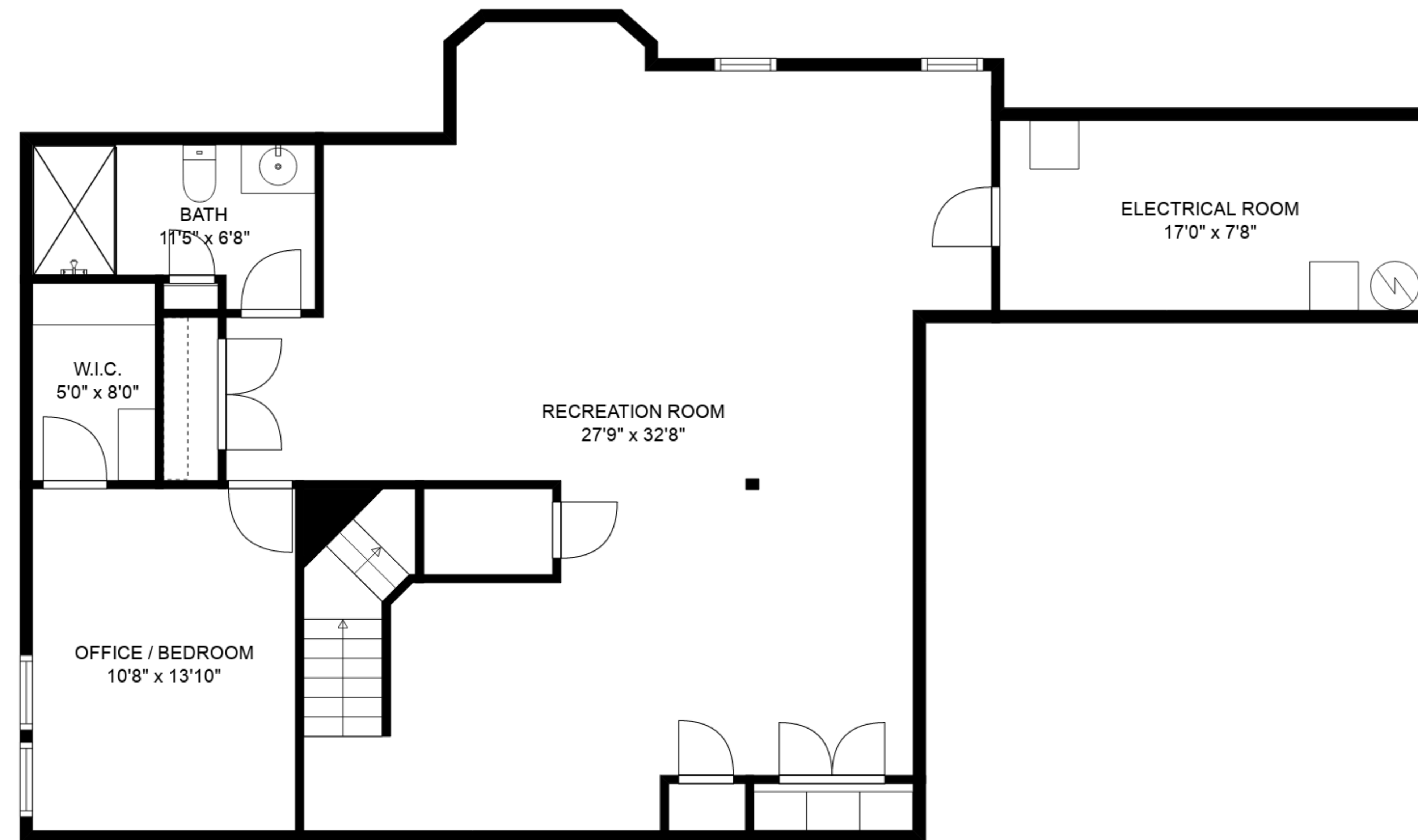
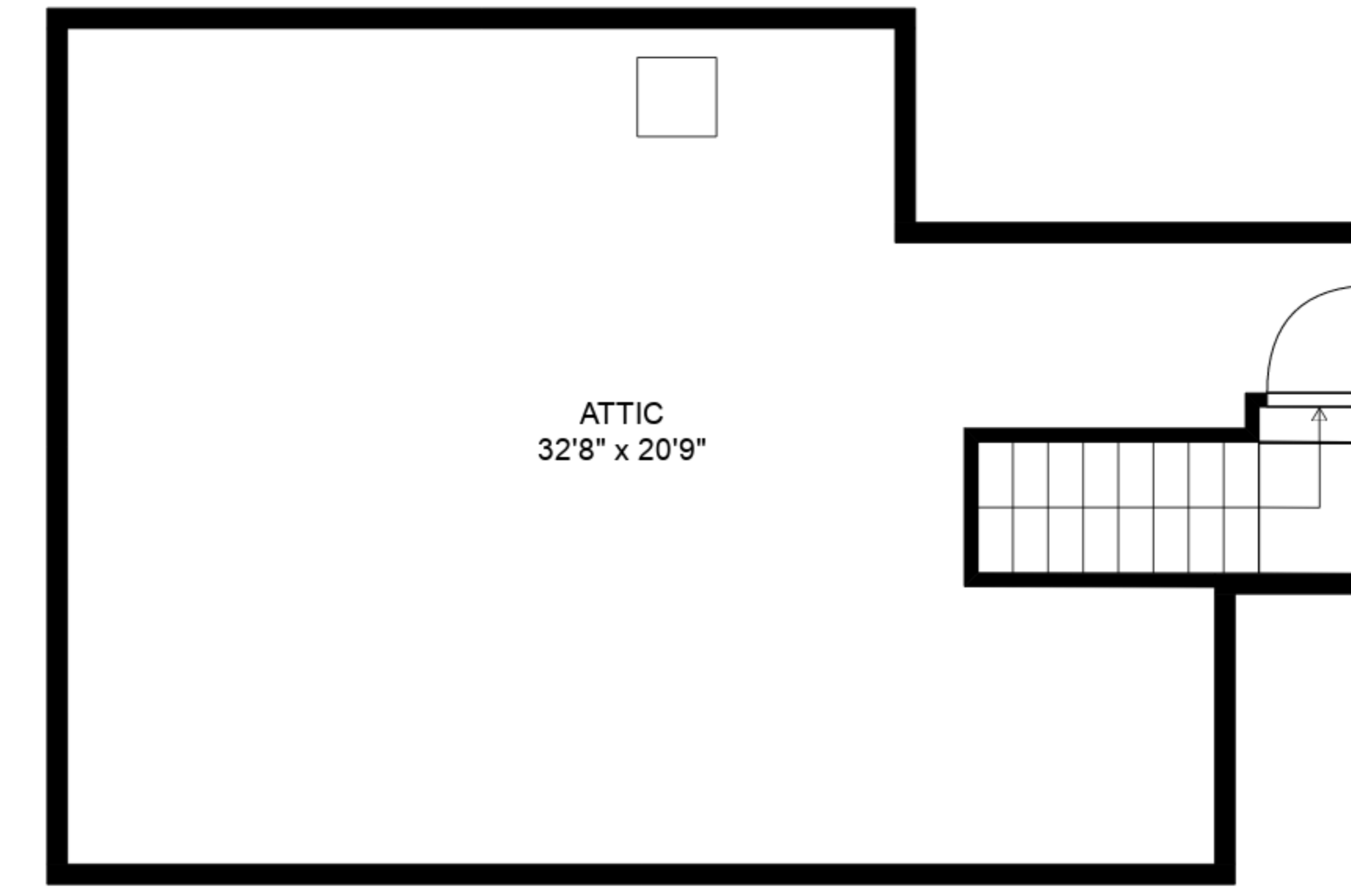
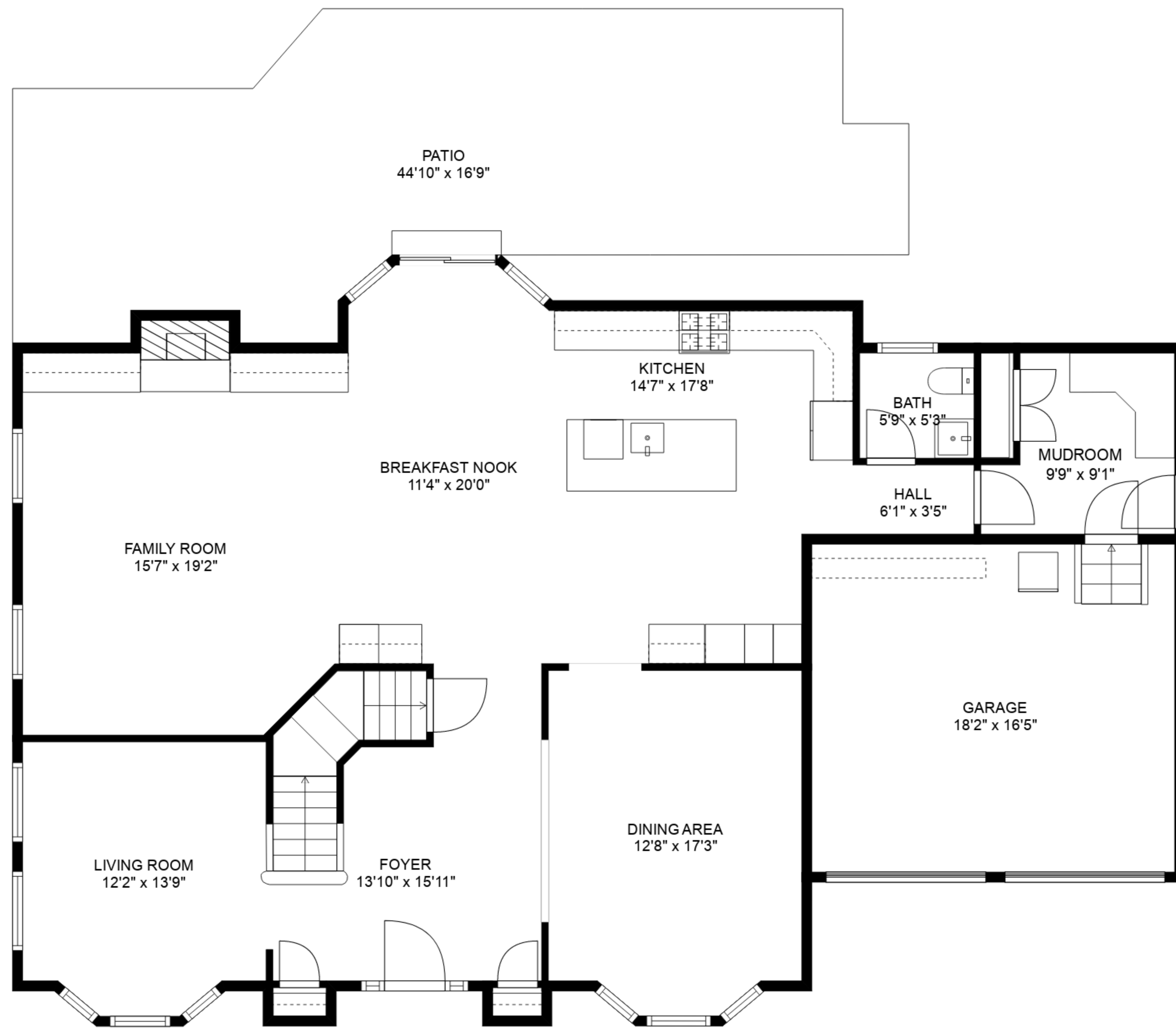


ATTIC  
32'8" x 20'9"

**TOTAL: 4277 sq. ft**

BELOW GROUND: 1093 sq. ft, FLOOR 2: 1501 sq. ft, FLOOR 3: 1640 sq. ft, FLOOR 4: 43 sq. ft  
EXCLUDED AREAS: ELECTRICAL ROOM: 131 sq. ft, PATIO: 545 sq. ft, GARAGE: 298 sq. ft,  
FIREPLACE: 9 sq. ft, OPEN TO BELOW: 124 sq. ft, LOW CEILING: 206 sq. ft,  
ATTIC: 336 sq. ft





**TOTAL: 4277 sq. ft**  
 BELOW GROUND: 1093 sq. ft, FLOOR 2: 1501 sq. ft, FLOOR 3: 1640 sq. ft, FLOOR 4: 43 sq. ft  
 EXCLUDED AREAS: ELECTRICAL ROOM: 131 sq. ft, PATIO: 545 sq. ft, GARAGE: 298 sq. ft,  
 FIREPLACE: 9 sq. ft, OPEN TO BELOW: 124 sq. ft, LOW CEILING: 206 sq. ft,  
 ATTIC: 336 sq. ft