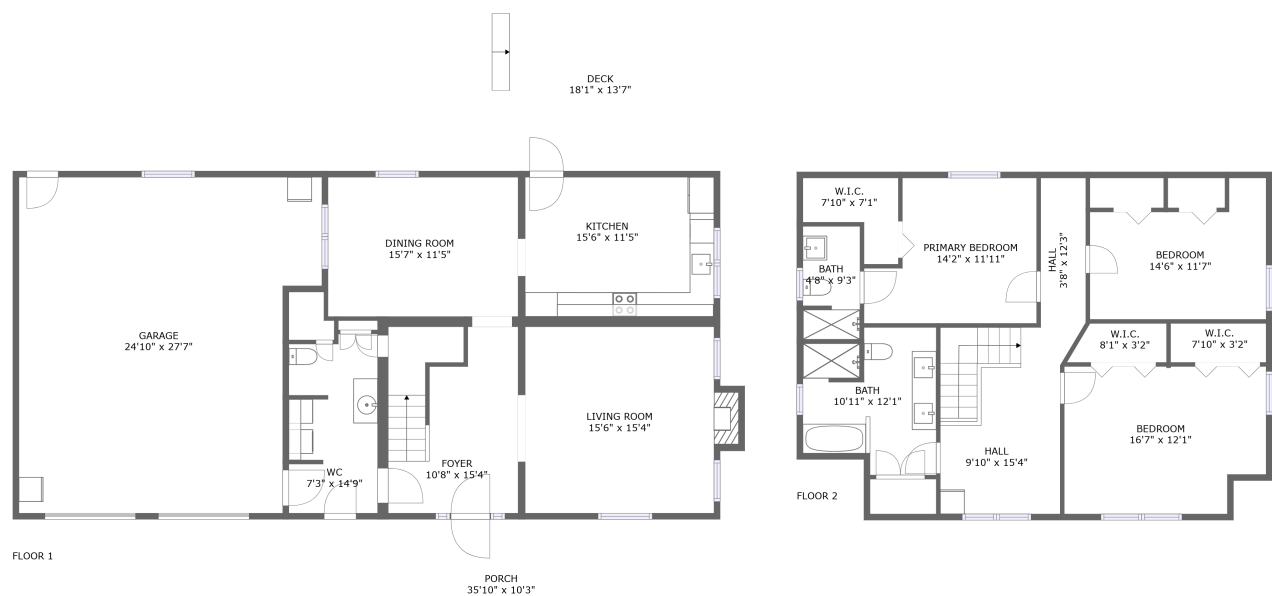



Home report

612 Front Avenue,Salem,Virginia,United States




Property summary




1

Garages




3

Bedrooms




2

Bathrooms




1

Half baths




2

Floors



2,074

Gross living  
area sqft

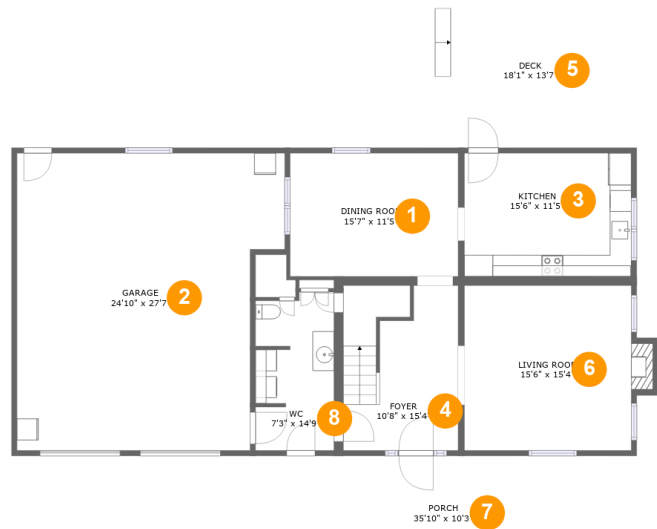


3,366

Total sqft

Home report

612 Front Avenue,Salem,Virginia,United States



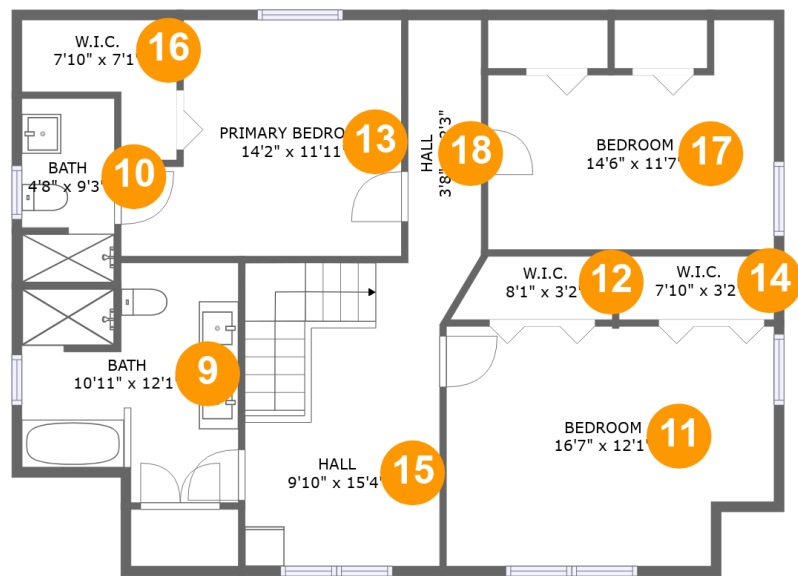
Room dimensions

Floor 1Total sqft: 2288    Living area: 996

#		Dimensions	sqft	Counted as living area
1	Dining Room	15'7" x 11'5"	179 sq. ft	Yes
2	Garage	24'10" x 27'7"	626 sq. ft	No
3	Kitchen	15'6" x 11'5"	177 sq. ft	Yes
4	Foyer	10'8" x 15'4"	159 sq. ft	Yes
5	Deck	18'1" x 13'7"	247 sq. ft	No
6	Living Room	15'6" x 15'4"	246 sq. ft	Yes
7	Porch	35'10" x 10'3"	370 sq. ft	No
8	WC	7'3" x 14'9"	102 sq. ft	Yes

Home report

612 Front Avenue,Salem,Virginia,United States

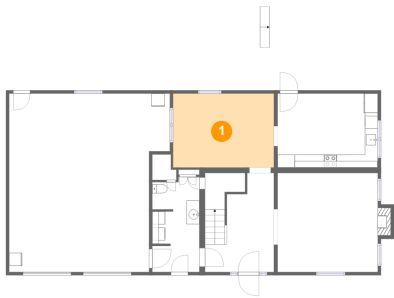


Room dimensions

Floor 2 Total sqft: 1078 Living area: 1078

#		Dimensions	sqft	Counted as living area
9	Bath	10'11" x 12'1"	114 sq. ft	Yes
10	Bath	4'8" x 9'3"	43 sq. ft	Yes
11	Bedroom	16'7" x 12'1"	190 sq. ft	Yes
12	W.I.C.	8'1" x 3'2"	23 sq. ft	Yes
13	Primary Bedroom	14'2" x 11'11"	146 sq. ft	Yes
14	W.I.C.	7'10" x 3'2"	25 sq. ft	Yes
15	Hall	9'10" x 15'4"	154 sq. ft	Yes
16	W.I.C.	7'10" x 7'1"	38 sq. ft	Yes
17	Bedroom	14'6" x 11'7"	136 sq. ft	Yes
18	Hall	3'8" x 12'3"	45 sq. ft	Yes

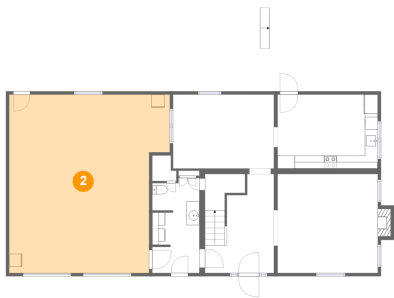
1 Floor 1 - Dining Room



Dimensions: 15'7" x 11'5"  
Area: 179 sq. ft  
Counted as living area: Yes

Heated: Yes  
Finished: Yes  
Enclosed: Yes  
Contiguous: Yes  
Permitted: Yes  
Wet space: No  
Addition: No  
Conversion: No

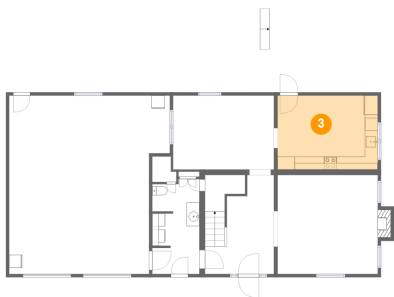
2 Floor 1 - Garage



Dimensions: 24'10" x 27'7"  
Area: 626 sq. ft  
Counted as living area: No

Heated: No  
Finished: No  
Enclosed: Yes  
Contiguous: Yes  
Permitted: Yes  
Wet space: No  
Addition: No  
Conversion: No

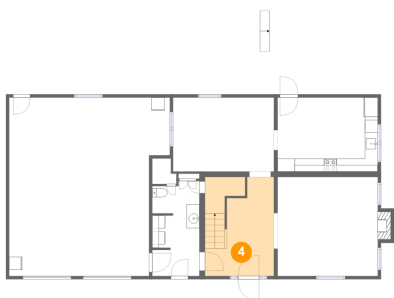
3 Floor 1 - Kitchen



Dimensions: 15'6" x 11'5"  
Area: 177 sq. ft  
Counted as living area: Yes

Heated: Yes  
Finished: Yes  
Enclosed: Yes  
Contiguous: Yes  
Permitted: Yes  
Wet space: No  
Addition: No  
Conversion: No

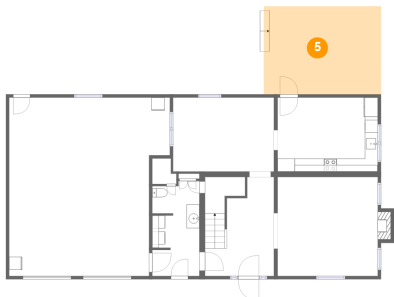
4 Floor 1 - Foyer



Dimensions: 10'8" x 15'4"  
Area: 159 sq. ft  
Counted as living area: Yes

Heated: Yes  
Finished: Yes  
Enclosed: Yes  
Contiguous: Yes  
Permitted: Yes  
Wet space: No  
Addition: No  
Conversion: No

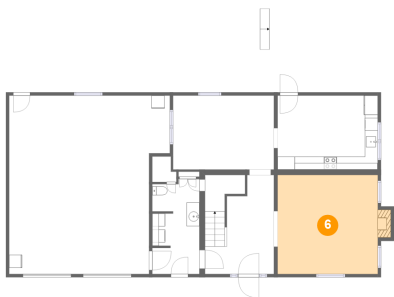
5 Floor 1 - Deck



Dimensions: 18'1" x 13'7"  
Area: 247 sq. ft  
Counted as living area: No

Heated: No  
Finished: Yes  
Enclosed: No  
Contiguous: Yes  
Permitted: Yes  
Wet space: No  
Addition: No  
Conversion: No

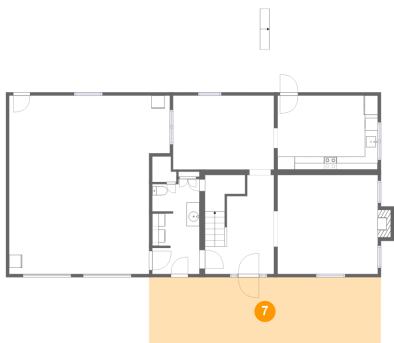
6 Floor 1 - Living Room



Dimensions: 15'6" x 15'4"  
Area: 246 sq. ft  
Counted as living area: Yes

Heated: Yes  
Finished: Yes  
Enclosed: Yes  
Contiguous: Yes  
Permitted: Yes  
Wet space: No  
Addition: No  
Conversion: No

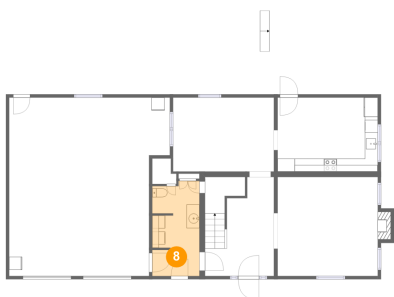
7 Floor 1 - Porch



Dimensions: 35'10" x 10'3"  
Area: 370 sq. ft  
Counted as living area: No

Heated: No  
Finished: Yes  
Enclosed: No  
Contiguous: Yes  
Permitted: Yes  
Wet space: No  
Addition: No  
Conversion: No

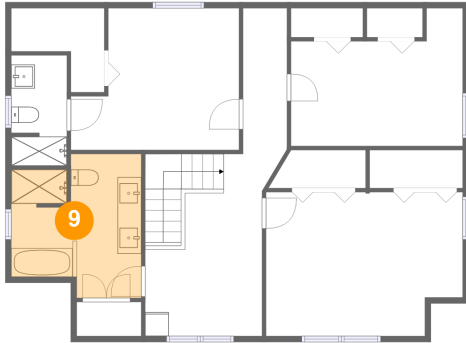
8 Floor 1 - WC



Dimensions: 7'3" x 14'9"  
Area: 102 sq. ft  
Counted as living area: Yes

Heated: Yes  
Finished: Yes  
Enclosed: Yes  
Contiguous: Yes  
Permitted: Yes  
Wet space: Yes  
Addition: No  
Conversion: No

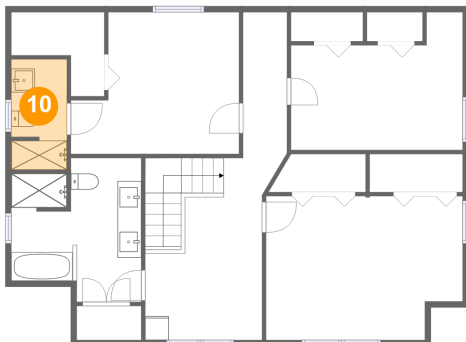
## 9 Floor 2 - Bath



Dimensions: 10'11" x 12'1"  
Area: 114 sq. ft  
Counted as living area: Yes

Heated: Yes  
Finished: Yes  
Enclosed: Yes  
Contiguous: Yes  
Permitted: Yes  
Wet space: Yes  
Addition: No  
Conversion: No

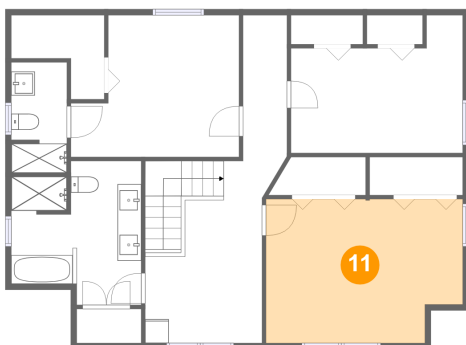
## 10 Floor 2 - Bath



Dimensions: 4'8" x 9'3"  
Area: 43 sq. ft  
Counted as living area: Yes

Heated: Yes  
Finished: Yes  
Enclosed: Yes  
Contiguous: Yes  
Permitted: Yes  
Wet space: Yes  
Addition: No  
Conversion: No

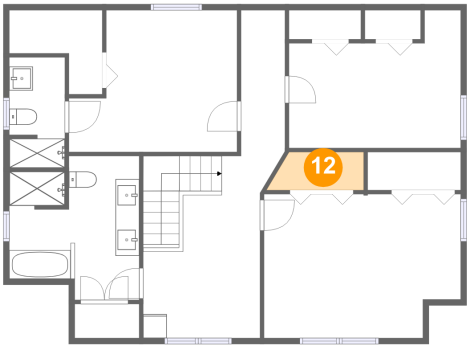
## 11 Floor 2 - Bedroom



Dimensions: 16'7" x 12'1"  
Area: 190 sq. ft  
Counted as living area: Yes

Heated: Yes  
Finished: Yes  
Enclosed: Yes  
Contiguous: Yes  
Permitted: Yes  
Wet space: No  
Addition: No  
Conversion: No

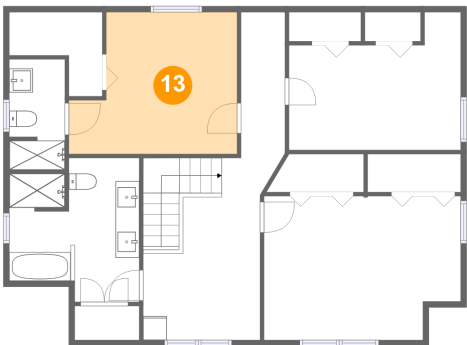
12 Floor 2 - W.I.C.



Dimensions: 8'1" x 3'2"  
Area: 23 sq. ft  
Counted as living area: Yes

Heated: Yes  
Finished: Yes  
Enclosed: Yes  
Contiguous: Yes  
Permitted: Yes  
Wet space: No  
Addition: No  
Conversion: No

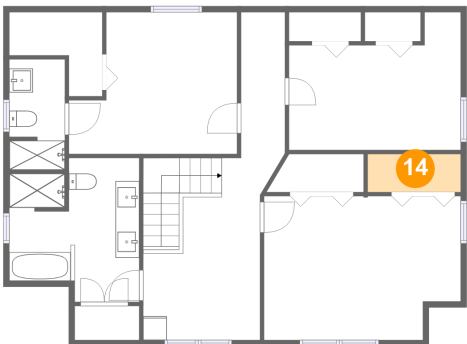
13 Floor 2 - Primary Bedroom



Dimensions: 14'2" x 11'11"  
Area: 146 sq. ft  
Counted as living area: Yes

Heated: Yes  
Finished: Yes  
Enclosed: Yes  
Contiguous: Yes  
Permitted: Yes  
Wet space: No  
Addition: No  
Conversion: No

14 Floor 2 - W.I.C.

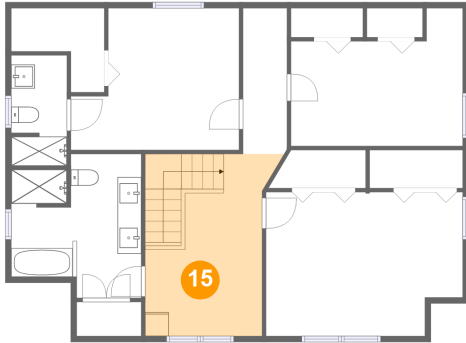


Dimensions: 7'10" x 3'2"  
Area: 25 sq. ft  
Counted as living area: Yes

Heated: Yes  
Finished: Yes  
Enclosed: Yes  
Contiguous: Yes  
Permitted: Yes  
Wet space: No  
Addition: No  
Conversion: No



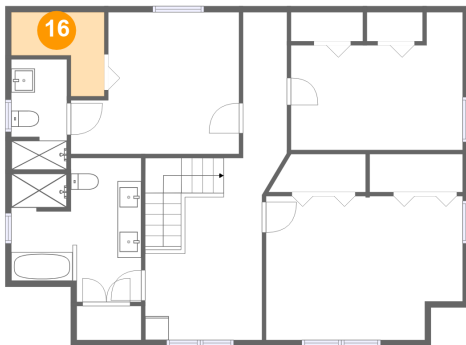
## 15 Floor 2 - Hall



Dimensions: 9'10" x 15'4"  
Area: 154 sq. ft  
Counted as living area: Yes

Heated: Yes  
Finished: Yes  
Enclosed: Yes  
Contiguous: Yes  
Permitted: Yes  
Wet space: No  
Addition: No  
Conversion: No

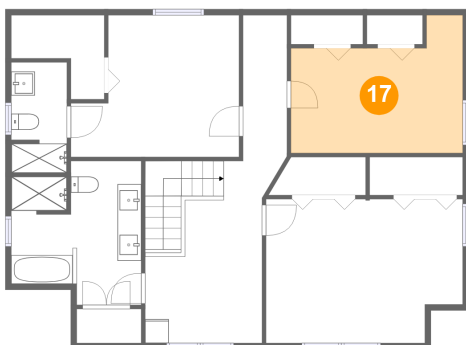
## 16 Floor 2 - W.I.C.



Dimensions: 7'10" x 7'1"  
Area: 38 sq. ft  
Counted as living area: Yes

Heated: Yes  
Finished: Yes  
Enclosed: Yes  
Contiguous: Yes  
Permitted: Yes  
Wet space: No  
Addition: No  
Conversion: No

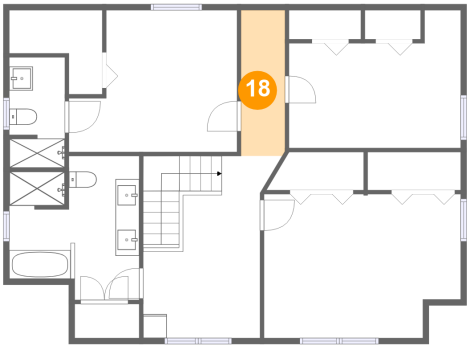
## 17 Floor 2 - Bedroom



Dimensions: 14'6" x 11'7"  
Area: 136 sq. ft  
Counted as living area: Yes

Heated: Yes  
Finished: Yes  
Enclosed: Yes  
Contiguous: Yes  
Permitted: Yes  
Wet space: No  
Addition: No  
Conversion: No

18 Floor 2 - Hall



Dimensions: 3'8" x 12'3"  
Area: 45 sq. ft  
Counted as living area: Yes

Heated: Yes  
Finished: Yes  
Enclosed: Yes  
Contiguous: Yes  
Permitted: Yes  
Wet space: No  
Addition: No  
Conversion: No