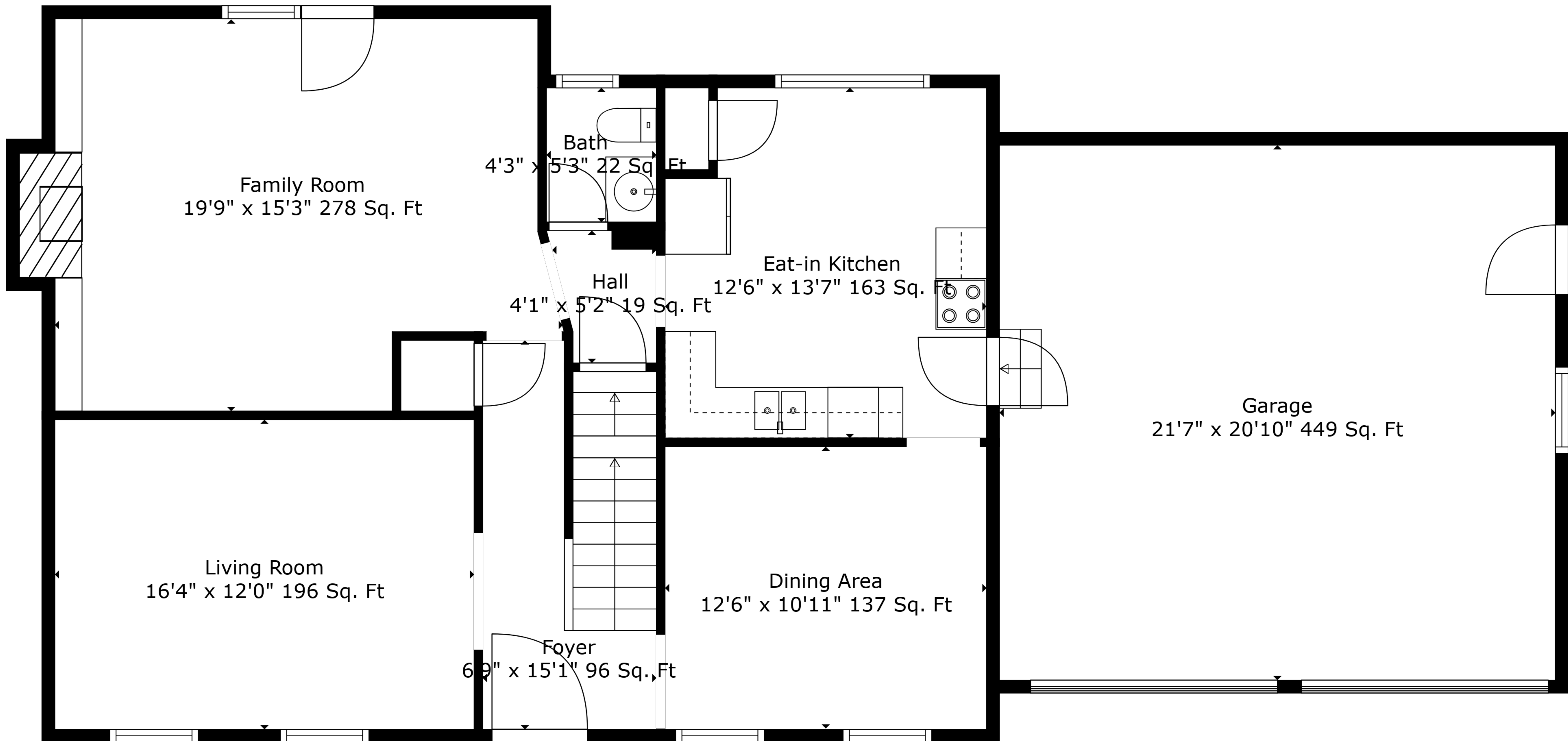


Basement
 36'3" x 27'7" 957 Sq. Ft

TOTAL: 1953 sq. ft
 BELOW GROUND: 0 sq. ft, FLOOR 2: 957 sq. ft, FLOOR 3: 996 sq. ft
 EXCLUDED AREAS: BASEMENT: 957 sq. ft, FIREPLACE: 16 sq. ft, GARAGE: 449 sq. ft

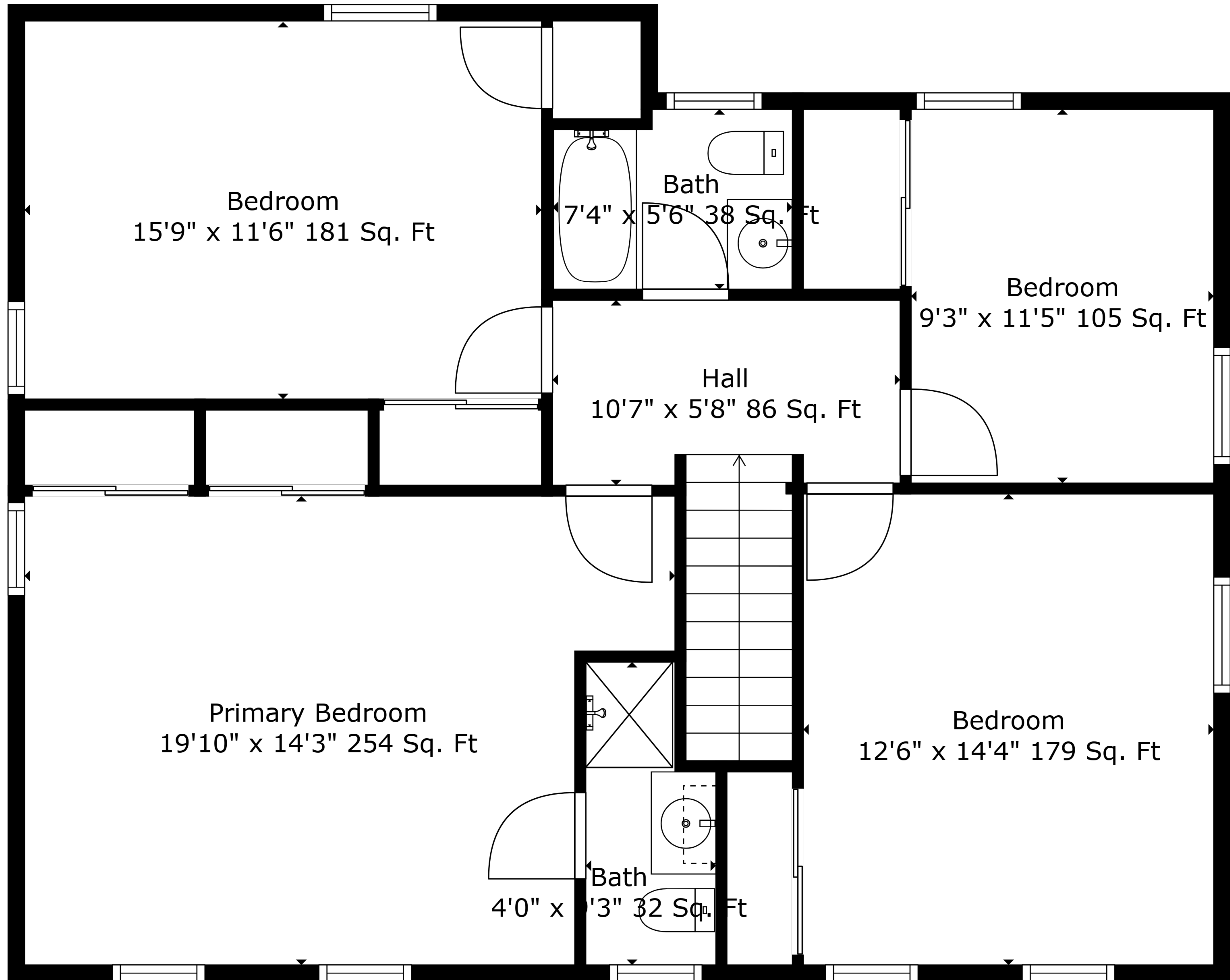
Measurements Are Deemed Highly Reliable But Not Guaranteed.



TOTAL: 1953 sq. ft

BELOW GROUND: 0 sq. ft, FLOOR 2: 957 sq. ft, FLOOR 3: 996 sq. ft
 EXCLUDED AREAS: BASEMENT: 957 sq. ft, FIREPLACE: 16 sq. ft, GARAGE: 449 sq. ft

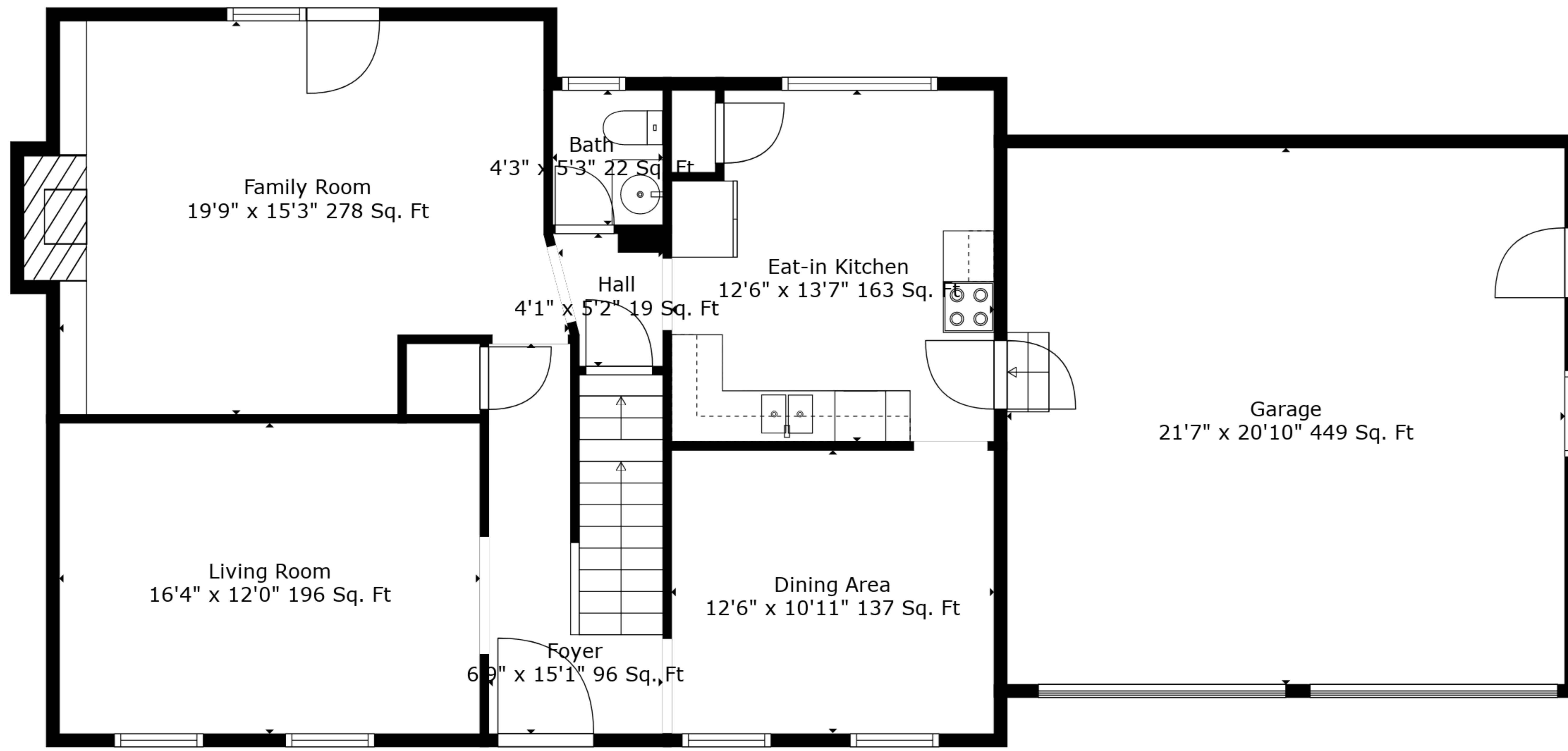
Measurements Are Deemed Highly Reliable But Not Guaranteed.



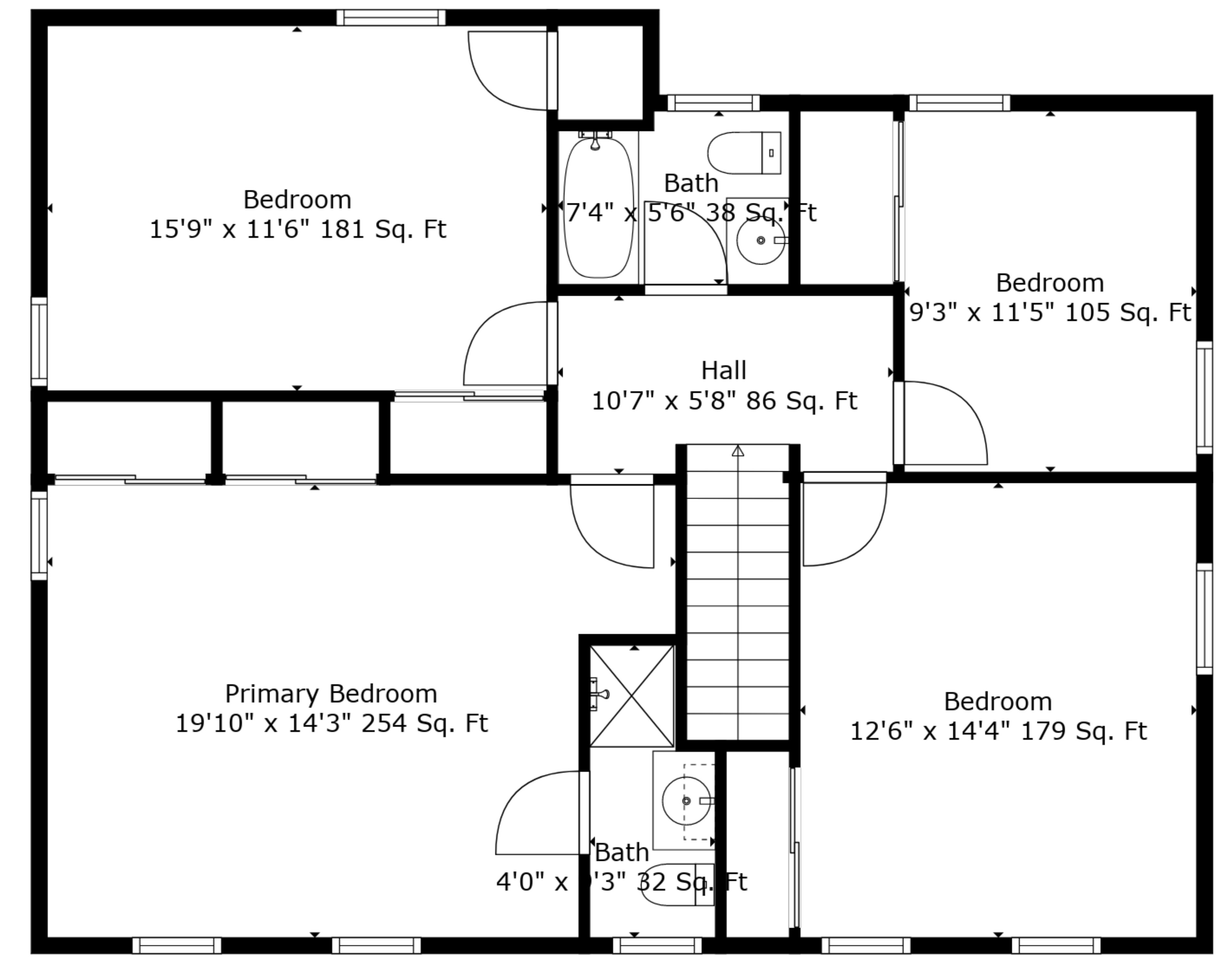
TOTAL: 1953 sq. ft

BELOW GROUND: 0 sq. ft, FLOOR 2: 957 sq. ft, FLOOR 3: 996 sq. ft
 EXCLUDED AREAS: BASEMENT: 957 sq. ft, FIREPLACE: 16 sq. ft, GARAGE: 449 sq. ft

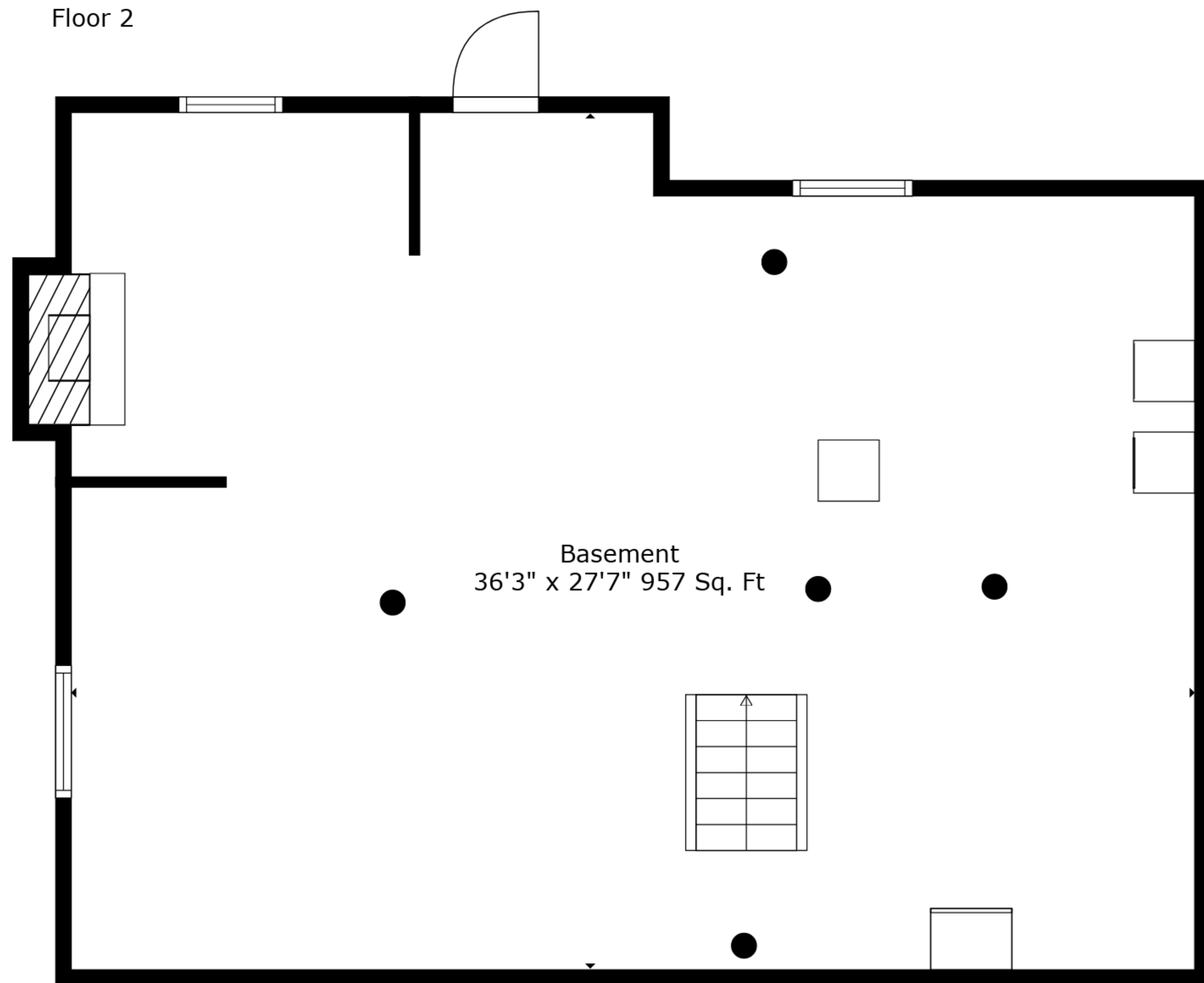
Measurements Are Deemed Highly Reliable But Not Guaranteed.



Floor 2



Floor 3



Floor 1

TOTAL: 1953 sq. ft
 BELOW GROUND: 0 sq. ft, FLOOR 2: 957 sq. ft, FLOOR 3: 996 sq. ft
 EXCLUDED AREAS: BASEMENT: 957 sq. ft, FIREPLACE: 16 sq. ft, GARAGE: 449 sq. ft

Measurements Are Deemed Highly Reliable But Not Guaranteed.