

Home report

7730 Old Mill Forest Drive, Old Mill Forest, Roanoke, Roanoke County, Virginia, United States, 24018



Total GLA: 5350 sq. ft

Floor 1: 2296 sq. ft, Floor 2: 3054 sq. ft

Excluded: Utility 127 sq. ft, Elevator 41 sq. ft, Garage 531 sq. ft, Fireplace 29 sq. ft, Screened porch 548 sq. ft, Patio 243 sq. ft

Property summary

 **2** Floors

 **4** Bedrooms

 **4** Bathrooms

Home report

**7730 Old Mill Forest Drive, Old Mill Forest, Roanoke, Roanoke
County, Virginia, United States, 24018**



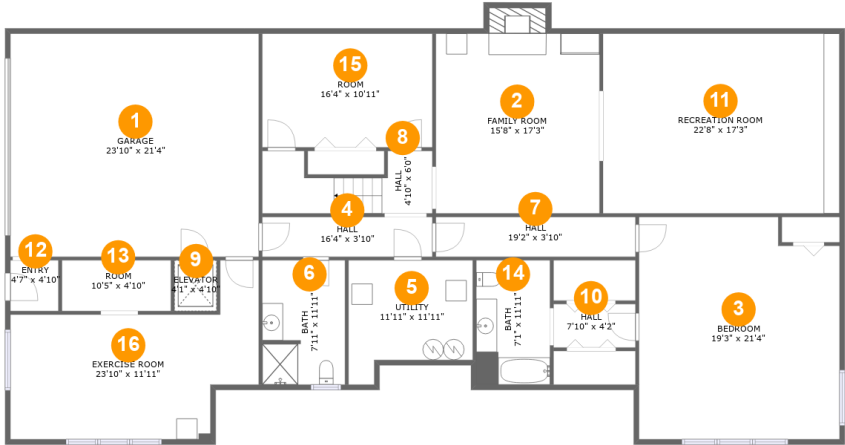
1
Half baths



1
Garages

Home report

7730 Old Mill Forest Drive, Old Mill Forest, Roanoke, Roanoke County, Virginia, United States, 24018



Room dimensions

Floor 1 Total:2296sqft Excluded: 695sqft

#		Max Dimensions	sqft	Included
1	Garage	23'10" x 21'4"	509 sq. ft	No
2	Family Room	15'8" x 17'3"	284 sq. ft	Yes
3	Bedroom	19'3" x 21'4"	393 sq. ft	Yes
4	Hall	16'4" x 3'10"	62 sq. ft	Yes
5	Utility	11'11" x 11'11"	120 sq. ft	No
6	Bath	7'11" x 11'11"	93 sq. ft	Yes
7	Hall	19'2" x 3'10"	73 sq. ft	Yes
8	Hall	4'10" x 6'0"	77 sq. ft	Yes
9	Elevator	4'1" x 4'10"	20 sq. ft	No
10	Hall	7'10" x 4'2"	33 sq. ft	Yes
11	Recreation Room	22'8" x 17'3"	390 sq. ft	Yes

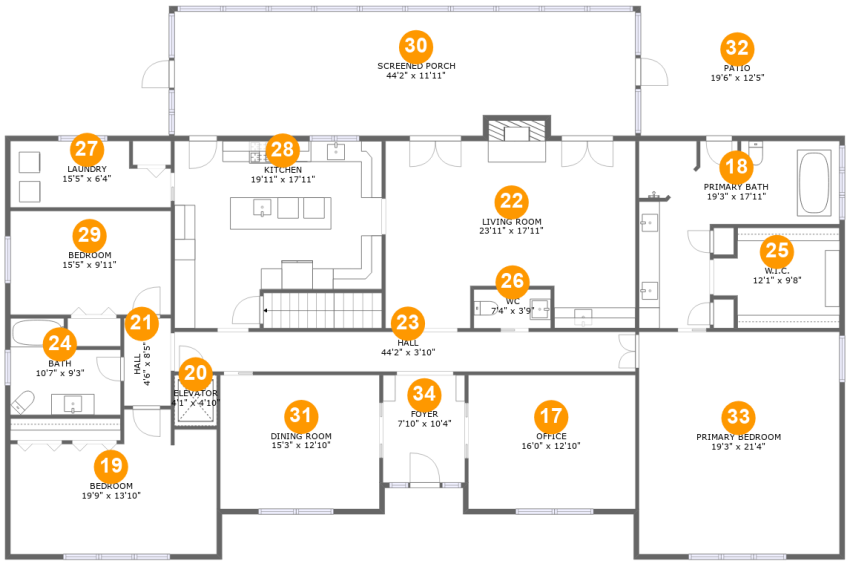
Home report

7730 Old Mill Forest Drive, Old Mill Forest, Roanoke, Roanoke County, Virginia, United States, 24018

#		Max Dimensions	sqft	Included
12	Entry	4'7" x 4'10"	22 sq. ft	Yes
13	Room	10'5" x 4'10"	51 sq. ft	Yes
14	Bath	7'1" x 11'11"	84 sq. ft	Yes
15	Room	16'4" x 10'11"	178 sq. ft	Yes
16	Exercise Room	23'10" x 11'11"	279 sq. ft	Yes

Home report

7730 Old Mill Forest Drive, Old Mill Forest, Roanoke, Roanoke County, Virginia, United States, 24018



Room dimensions

Floor 2 Total:3054sqft Excluded: 824sqft

#		Max Dimensions	sqft	Included
17	Office	16'0" x 12'10"	205 sq. ft	Yes
18	Primary Bath	19'3" x 17'11"	218 sq. ft	Yes
19	Bedroom	19'9" x 13'10"	229 sq. ft	Yes
20	Elevator	4'1" x 4'10"	20 sq. ft	No
21	Hall	4'6" x 8'5"	38 sq. ft	Yes
22	Living Room	23'11" x 17'11"	408 sq. ft	Yes
23	Hall	44'2" x 3'10"	168 sq. ft	Yes
24	Bath	10'7" x 9'3"	81 sq. ft	Yes
25	W.I.C.	12'1" x 9'8"	102 sq. ft	Yes
26	WC	7'4" x 3'9"	27 sq. ft	Yes
27	Laundry	15'5" x 6'4"	87 sq. ft	Yes

Home report

7730 Old Mill Forest Drive, Old Mill Forest, Roanoke, Roanoke County, Virginia, United States, 24018

#		Max Dimensions	sqft	Included
28	Kitchen	19'11" x 17'11"	313 sq. ft	Yes
29	Bedroom	15'5" x 9'11"	153 sq. ft	Yes
30	Screened Porch	44'2" x 11'11"	514 sq. ft	No
31	Dining Room	15'3" x 12'10"	196 sq. ft	Yes
32	Patio	19'6" x 12'5"	243 sq. ft	No
33	Primary Bedroom	19'3" x 21'4"	409 sq. ft	Yes
34	Foyer	7'10" x 10'4"	81 sq. ft	Yes

7730 Old Mill Forest Drive, Old Mill Forest, Roanoke, Roanoke County, Virginia, United States, 24018

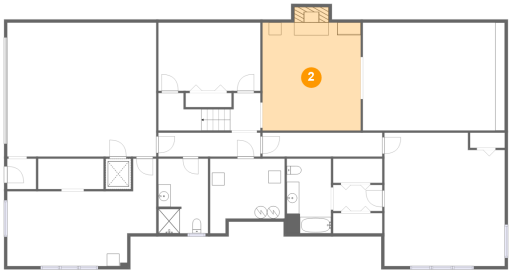
1 Floor 1 - Garage



Max Dimensions: 23'10" x 21'4"
Calculated Area: 509 sq. ft
Included: No

Heated: No
Finished: No
Enclosed: Yes
Contiguous: Yes
Permitted: Yes
Wet space: No
Addition: No
Conversion: No

2 Floor 1 - Family Room



Max Dimensions: 15'8" x 17'3"
Calculated Area: 284 sq. ft
Included: Yes

Heated: Yes
Finished: Yes
Enclosed: Yes
Contiguous: Yes
Permitted: Yes
Wet space: No
Addition: No
Conversion: No

7730 Old Mill Forest Drive, Old Mill Forest, Roanoke, Roanoke County, Virginia, United States, 24018

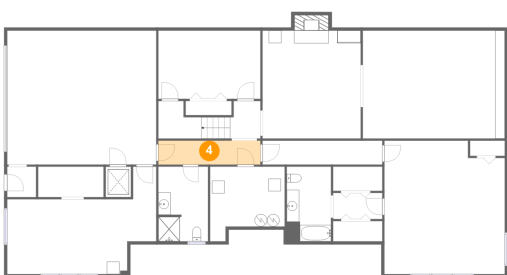
3 Floor 1 - Bedroom



Max Dimensions: 19'3" x 21'4"
Calculated Area: 393 sq. ft
Included: Yes

Heated: Yes
Finished: Yes
Enclosed: Yes
Contiguous: Yes
Permitted: Yes
Wet space: No
Addition: No
Conversion: No

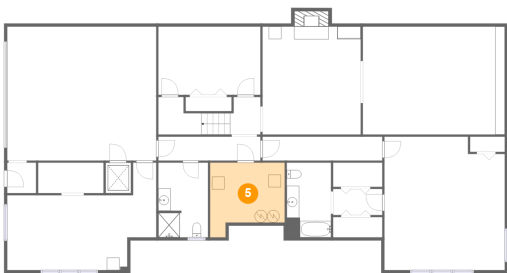
4 Floor 1 - Hall



Max Dimensions: 16'4" x 3'10"
Calculated Area: 62 sq. ft
Included: Yes

Heated: Yes
Finished: Yes
Enclosed: Yes
Contiguous: Yes
Permitted: Yes
Wet space: No
Addition: No
Conversion: No

5 Floor 1 - Utility

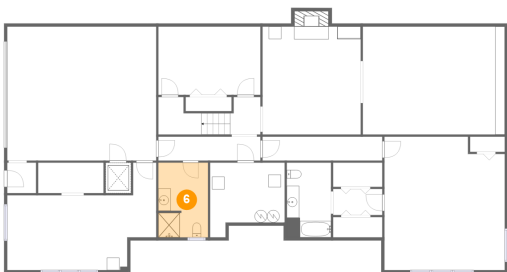


Max Dimensions: 11'11" x 11'11"
Calculated Area: 120 sq. ft
Included: No

Heated: Yes
Finished: No
Enclosed: Yes
Contiguous: Yes
Permitted: Yes
Wet space: No
Addition: No
Conversion: No

7730 Old Mill Forest Drive, Old Mill Forest, Roanoke, Roanoke County, Virginia, United States, 24018

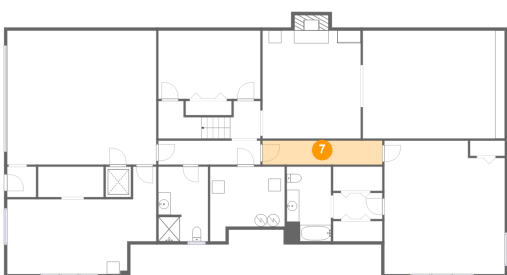
6 Floor 1 - Bath



Max Dimensions: 7'11" x 11'11"
Calculated Area: 93 sq. ft
Included: Yes

Heated: Yes
Finished: Yes
Enclosed: Yes
Contiguous: Yes
Permitted: Yes
Wet space: Yes
Addition: No
Conversion: No

7 Floor 1 - Hall



Max Dimensions: 19'2" x 3'10"
Calculated Area: 73 sq. ft
Included: Yes

Heated: Yes
Finished: Yes
Enclosed: Yes
Contiguous: Yes
Permitted: Yes
Wet space: No
Addition: No
Conversion: No

8 Floor 1 - Hall



Max Dimensions: 4'10" x 6'0"
Calculated Area: 77 sq. ft
Included: Yes

Heated: Yes
Finished: Yes
Enclosed: Yes
Contiguous: Yes
Permitted: Yes
Wet space: No
Addition: No
Conversion: No

7730 Old Mill Forest Drive, Old Mill Forest, Roanoke, Roanoke County, Virginia, United States, 24018

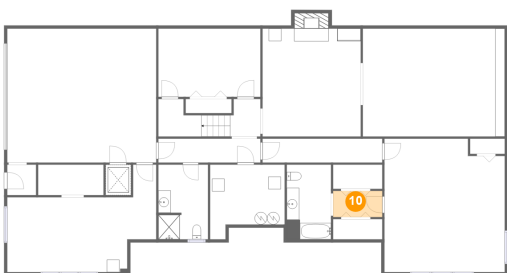
9 Floor 1 - Elevator



Max Dimensions: 4'1" x 4'10"
Calculated Area: 20 sq. ft
Included: No

Heated: No
Finished: No
Enclosed: Yes
Contiguous: Yes
Permitted: Yes
Wet space: No
Addition: No
Conversion: No

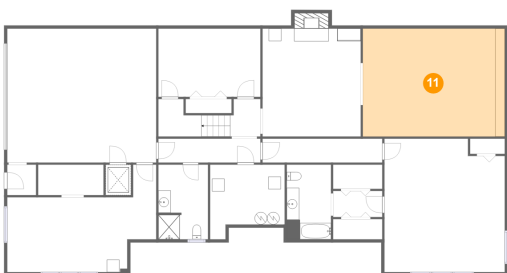
10 Floor 1 - Hall



Max Dimensions: 7'10" x 4'2"
Calculated Area: 33 sq. ft
Included: Yes

Heated: Yes
Finished: Yes
Enclosed: Yes
Contiguous: Yes
Permitted: Yes
Wet space: No
Addition: No
Conversion: No

11 Floor 1 - Recreation Room



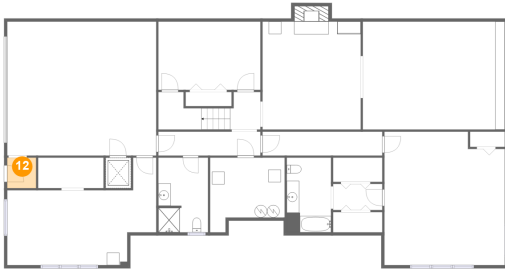
Max Dimensions: 22'8" x 17'3"
Calculated Area: 390 sq. ft
Included: Yes

Heated: Yes
Finished: Yes
Enclosed: Yes
Contiguous: Yes
Permitted: Yes
Wet space: No
Addition: No
Conversion: No

Home report

7730 Old Mill Forest Drive, Old Mill Forest, Roanoke, Roanoke County, Virginia, United States, 24018

12 Floor 1 - Entry



Max Dimensions: 4'7" x 4'10"
Calculated Area: 22 sq. ft
Included: Yes

Heated: Yes
Finished: Yes
Enclosed: Yes
Contiguous: Yes
Permitted: Yes
Wet space: No
Addition: No
Conversion: No

13 Floor 1 - Room



Max Dimensions: 10'5" x 4'10"
Calculated Area: 51 sq. ft
Included: Yes

Heated: Yes
Finished: Yes
Enclosed: Yes
Contiguous: Yes
Permitted: Yes
Wet space: No
Addition: No
Conversion: No

14 Floor 1 - Bath



Max Dimensions: 7'1" x 11'11"
Calculated Area: 84 sq. ft
Included: Yes

Heated: Yes
Finished: Yes
Enclosed: Yes
Contiguous: Yes
Permitted: Yes
Wet space: Yes
Addition: No
Conversion: No

7730 Old Mill Forest Drive, Old Mill Forest, Roanoke, Roanoke County, Virginia, United States, 24018

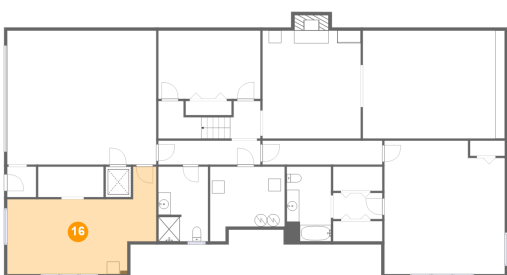
15 Floor 1 - Room



Max Dimensions: 16'4" x 10'11"
Calculated Area: 178 sq. ft
Included: Yes

Heated: Yes
Finished: Yes
Enclosed: Yes
Contiguous: Yes
Permitted: Yes
Wet space: No
Addition: No
Conversion: No

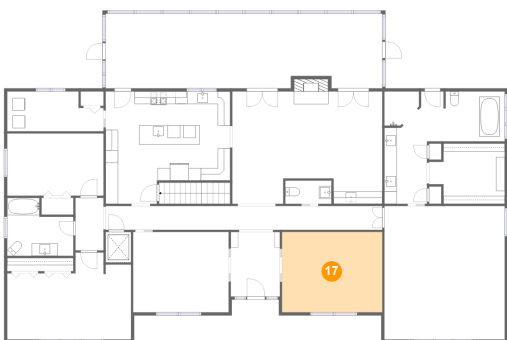
16 Floor 1 - Exercise Room



Max Dimensions: 23'10" x 11'11"
Calculated Area: 279 sq. ft
Included: Yes

Heated: Yes
Finished: Yes
Enclosed: Yes
Contiguous: Yes
Permitted: Yes
Wet space: No
Addition: No
Conversion: No

17 Floor 2 - Office

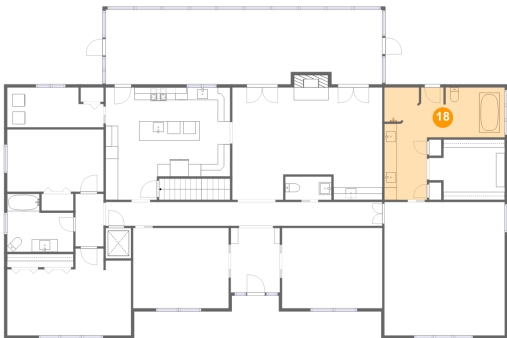


Max Dimensions: 16'0" x 12'10"
Calculated Area: 205 sq. ft
Included: Yes

Heated: Yes
Finished: Yes
Enclosed: Yes
Contiguous: Yes
Permitted: Yes
Wet space: No
Addition: No
Conversion: No

7730 Old Mill Forest Drive, Old Mill Forest, Roanoke, Roanoke County, Virginia, United States, 24018

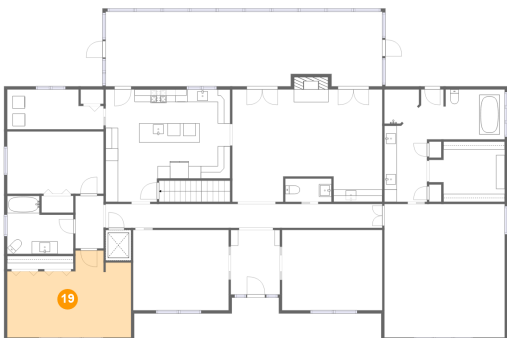
18 Floor 2 - Primary Bath



Max Dimensions: 19'3" x 17'11"
Calculated Area: 218 sq. ft
Included: Yes

Heated: Yes
Finished: Yes
Enclosed: Yes
Contiguous: Yes
Permitted: Yes
Wet space: Yes
Addition: No
Conversion: No

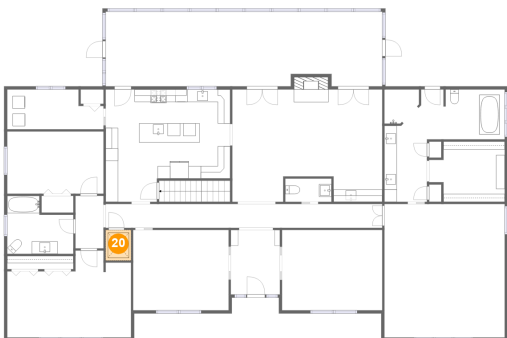
19 Floor 2 - Bedroom



Max Dimensions: 19'9" x 13'10"
Calculated Area: 229 sq. ft
Included: Yes

Heated: Yes
Finished: Yes
Enclosed: Yes
Contiguous: Yes
Permitted: Yes
Wet space: No
Addition: No
Conversion: No

20 Floor 2 - Elevator

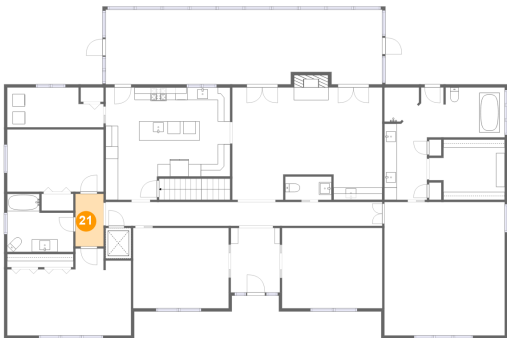


Max Dimensions: 4'1" x 4'10"
Calculated Area: 20 sq. ft
Included: No

Heated: No
Finished: No
Enclosed: Yes
Contiguous: Yes
Permitted: Yes
Wet space: No
Addition: No
Conversion: No

7730 Old Mill Forest Drive, Old Mill Forest, Roanoke, Roanoke County, Virginia, United States, 24018

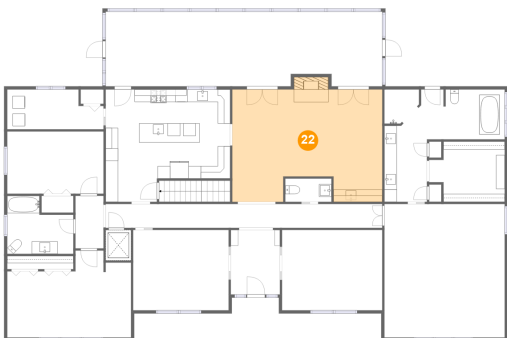
21 Floor 2 - Hall



Max Dimensions: 4'6" x 8'5"
Calculated Area: 38 sq. ft
Included: Yes

Heated: Yes
Finished: Yes
Enclosed: Yes
Contiguous: Yes
Permitted: Yes
Wet space: No
Addition: No
Conversion: No

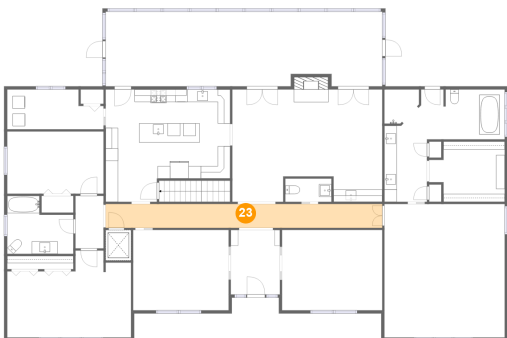
22 Floor 2 - Living Room



Max Dimensions: 23'11" x 17'11"
Calculated Area: 408 sq. ft
Included: Yes

Heated: Yes
Finished: Yes
Enclosed: Yes
Contiguous: Yes
Permitted: Yes
Wet space: No
Addition: No
Conversion: No

23 Floor 2 - Hall



Max Dimensions: 44'2" x 3'10"
Calculated Area: 168 sq. ft
Included: Yes

Heated: Yes
Finished: Yes
Enclosed: Yes
Contiguous: Yes
Permitted: Yes
Wet space: No
Addition: No
Conversion: No

Home report

7730 Old Mill Forest Drive, Old Mill Forest, Roanoke, Roanoke County, Virginia, United States, 24018

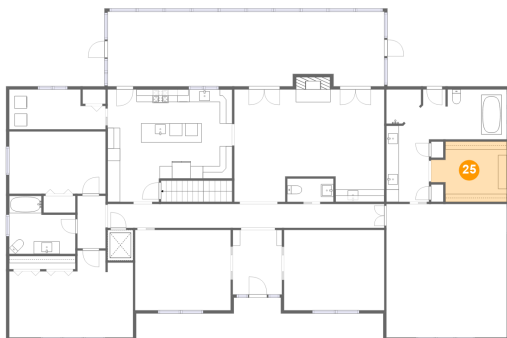
24 Floor 2 - Bath



Max Dimensions: 10'7" x 9'3"
Calculated Area: 81 sq. ft
Included: Yes

Heated: Yes
Finished: Yes
Enclosed: Yes
Contiguous: Yes
Permitted: Yes
Wet space: Yes
Addition: No
Conversion: No

25 Floor 2 - W.I.C.



Max Dimensions: 12'1" x 9'8"
Calculated Area: 102 sq. ft
Included: Yes

Heated: Yes
Finished: Yes
Enclosed: Yes
Contiguous: Yes
Permitted: Yes
Wet space: No
Addition: No
Conversion: No

26 Floor 2 - WC



Max Dimensions: 7'4" x 3'9"
Calculated Area: 27 sq. ft
Included: Yes

Heated: Yes
Finished: Yes
Enclosed: Yes
Contiguous: Yes
Permitted: Yes
Wet space: Yes
Addition: No
Conversion: No

7730 Old Mill Forest Drive, Old Mill Forest, Roanoke, Roanoke County, Virginia, United States, 24018

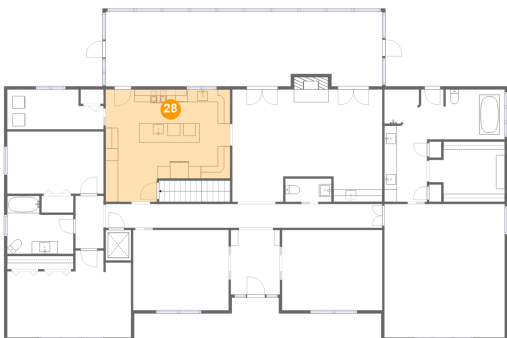
27 Floor 2 - Laundry



Max Dimensions: 15'5" x 6'4"
Calculated Area: 87 sq. ft
Included: Yes

Heated: Yes
Finished: Yes
Enclosed: Yes
Contiguous: Yes
Permitted: Yes
Wet space: No
Addition: No
Conversion: No

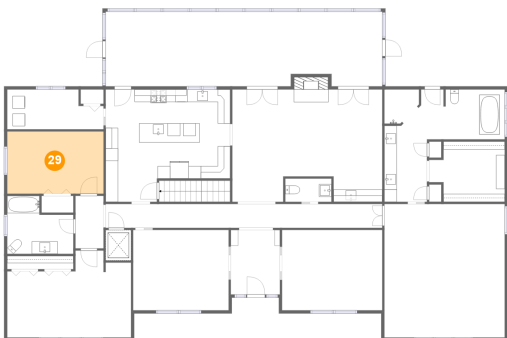
28 Floor 2 - Kitchen



Max Dimensions: 19'11" x 17'11"
Calculated Area: 313 sq. ft
Included: Yes

Heated: Yes
Finished: Yes
Enclosed: Yes
Contiguous: Yes
Permitted: Yes
Wet space: No
Addition: No
Conversion: No

29 Floor 2 - Bedroom



Max Dimensions: 15'5" x 9'11"
Calculated Area: 153 sq. ft
Included: Yes

Heated: Yes
Finished: Yes
Enclosed: Yes
Contiguous: Yes
Permitted: Yes
Wet space: No
Addition: No
Conversion: No

Home report

7730 Old Mill Forest Drive, Old Mill Forest, Roanoke, Roanoke County, Virginia, United States, 24018

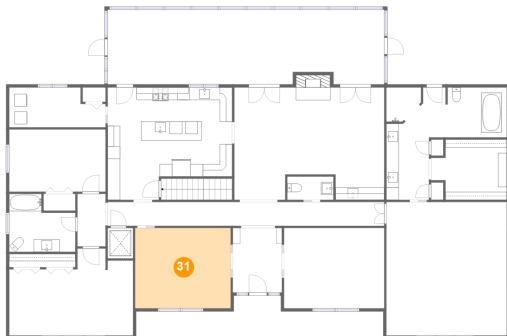
30 Floor 2 - Screened Porch



Max Dimensions: 44'2" x 11'11"
Calculated Area: 514 sq. ft
Included: No

Heated: No
Finished: Yes
Enclosed: No
Contiguous: Yes
Permitted: Yes
Wet space: No
Addition: No
Conversion: No

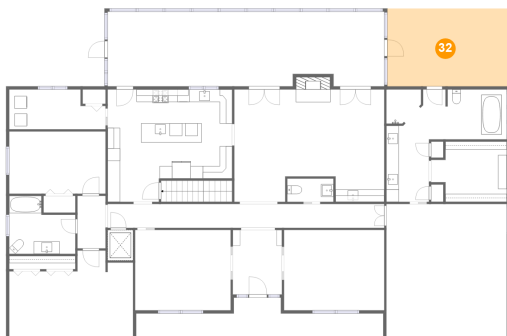
31 Floor 2 - Dining Room



Max Dimensions: 15'3" x 12'10"
Calculated Area: 196 sq. ft
Included: Yes

Heated: Yes
Finished: Yes
Enclosed: Yes
Contiguous: Yes
Permitted: Yes
Wet space: No
Addition: No
Conversion: No

32 Floor 2 - Patio

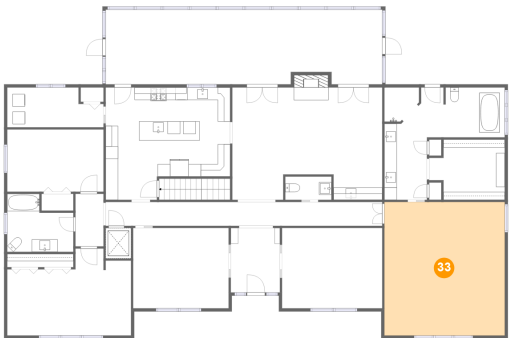


Max Dimensions: 19'6" x 12'5"
Calculated Area: 243 sq. ft
Included: No

Heated: No
Finished: Yes
Enclosed: No
Contiguous: Yes
Permitted: Yes
Wet space: No
Addition: No
Conversion: No

7730 Old Mill Forest Drive, Old Mill Forest, Roanoke, Roanoke County, Virginia, United States, 24018

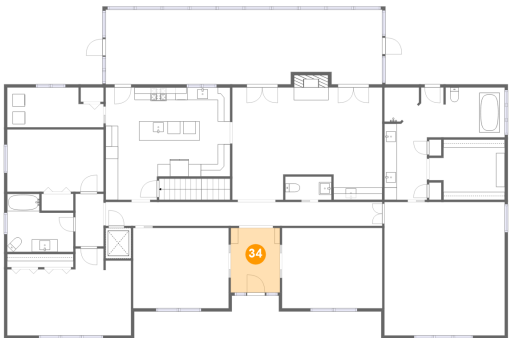
33 Floor 2 - Primary Bedroom



Max Dimensions: 19'3" x 21'4"
Calculated Area: 409 sq. ft
Included: Yes

Heated: Yes
Finished: Yes
Enclosed: Yes
Contiguous: Yes
Permitted: Yes
Wet space: No
Addition: No
Conversion: No

34 Floor 2 - Foyer



Max Dimensions: 7'10" x 10'4"
Calculated Area: 81 sq. ft
Included: Yes

Heated: Yes
Finished: Yes
Enclosed: Yes
Contiguous: Yes
Permitted: Yes
Wet space: No
Addition: No
Conversion: No