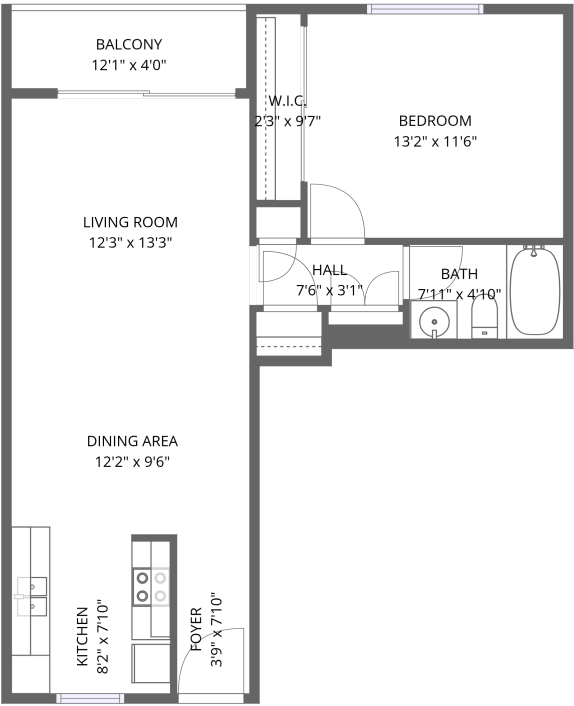


Home data report

752 Hartford Ave #4, Los Angeles, CA, US



1st floor

Total Area: 645 sq. ft

1st Floor: 645 sq. ft

Excluded: Balcony 48 sq. ft, Walls: 0 sq. ft

Property summary

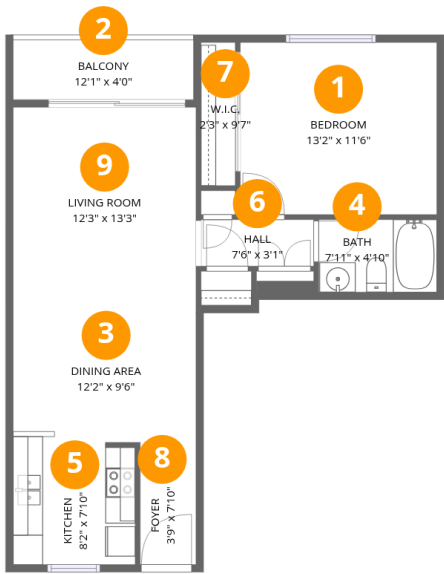
 **1** Floors

 **1** Bedrooms

 **1** Bathrooms

Home data report

752 Hartford Ave #4,Los Angeles,CA,US

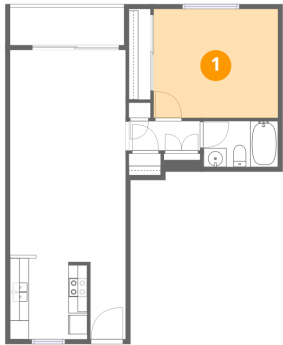


Room dimensions

Floor 1 Total:645sqft Excluded: 48sqft

#		Dimensions	sqft	Counted as living area
1	Bedroom	13'2" x 11'6"	151 sq. ft	Yes
2	Balcony	12'1" x 4'0"	48 sq. ft	No
3	Dining Area	12'2" x 9'6"	116 sq. ft	Yes
4	Bath	7'11" x 4'10"	38 sq. ft	Yes
5	Kitchen	8'2" x 7'10"	63 sq. ft	Yes
6	Hall	7'6" x 3'1"	23 sq. ft	Yes
7	W.I.C.	2'3" x 9'7"	22 sq. ft	Yes
8	Foyer	3'9" x 7'10"	29 sq. ft	Yes
9	Living Room	12'3" x 13'3"	162 sq. ft	Yes

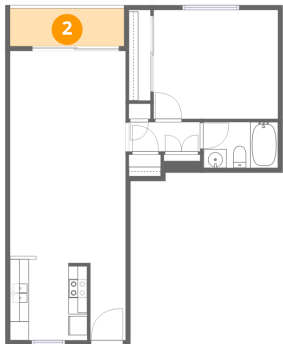
1 Floor 1 - Bedroom



Dimensions: 13'2" x 11'6"
Area: 151 sq. ft
Counted as living area: Yes

Heated: Yes
Finished: Yes
Enclosed: Yes
Contiguous: Yes
Permitted: Yes
Wet space: No
Addition: No
Conversion: No

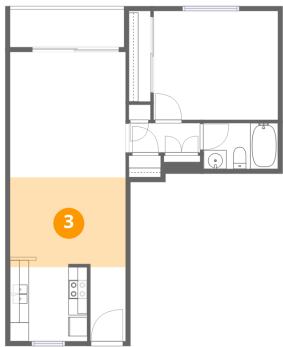
2 Floor 1 - Balcony



Dimensions: 12'1" x 4'0"
Area: 48 sq. ft
Counted as living area: No

Heated: No
Finished: No
Enclosed: No
Contiguous: Yes
Permitted: Yes
Wet space: No
Addition: No
Conversion: No

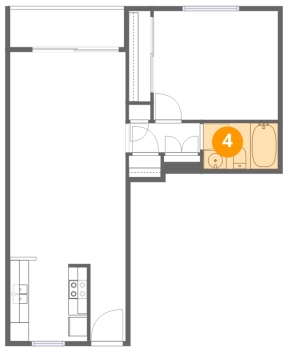
3 Floor 1 - Dining Area



Dimensions: 12'2" x 9'6"
Area: 116 sq. ft
Counted as living area: Yes

Heated: Yes
Finished: Yes
Enclosed: Yes
Contiguous: Yes
Permitted: Yes
Wet space: No
Addition: No
Conversion: No

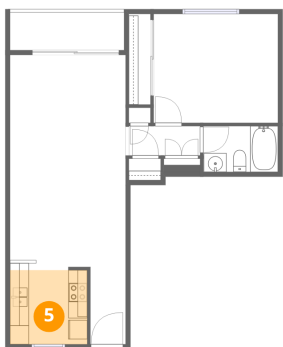
4 Floor 1 - Bath



Dimensions: 7'11" x 4'10"
Area: 38 sq. ft
Counted as living area: Yes

Heated: Yes
Finished: Yes
Enclosed: Yes
Contiguous: Yes
Permitted: Yes
Wet space: Yes
Addition: No
Conversion: No

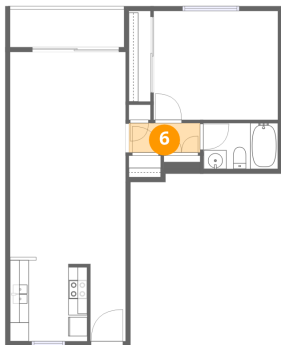
5 Floor 1 - Kitchen



Dimensions: 8'2" x 7'10"
Area: 63 sq. ft
Counted as living area: Yes

Heated: Yes
Finished: Yes
Enclosed: Yes
Contiguous: Yes
Permitted: Yes
Wet space: No
Addition: No
Conversion: No

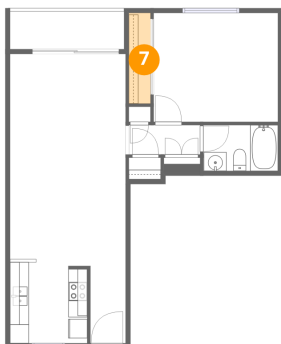
6 Floor 1 - Hall



Dimensions: 7'6" x 3'1"
Area: 23 sq. ft
Counted as living area: Yes

Heated: Yes
Finished: Yes
Enclosed: Yes
Contiguous: Yes
Permitted: Yes
Wet space: No
Addition: No
Conversion: No

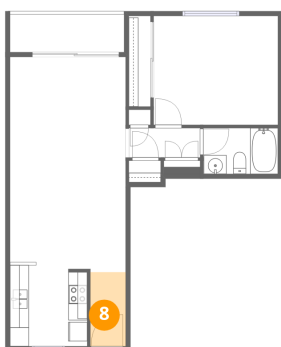
7 Floor 1 - W.I.C.



Dimensions: 2'3" x 9'7"
Area: 22 sq. ft
Counted as living area: Yes

Heated: Yes
Finished: Yes
Enclosed: Yes
Contiguous: Yes
Permitted: Yes
Wet space: No
Addition: No
Conversion: No

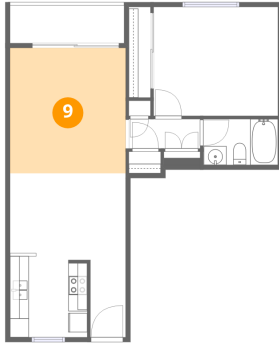
8 Floor 1 - Foyer



Dimensions: 3'9" x 7'10"
Area: 29 sq. ft
Counted as living area: Yes

Heated: Yes
Finished: Yes
Enclosed: Yes
Contiguous: Yes
Permitted: Yes
Wet space: No
Addition: No
Conversion: No

9 Floor 1 - Living Room



Dimensions: 12'3" x 13'3"
Area: 162 sq. ft
Counted as living area: Yes

Heated: Yes
Finished: Yes
Enclosed: Yes
Contiguous: Yes
Permitted: Yes
Wet space: No
Addition: No
Conversion: No