



Home report


1610 Majestic Woods Pl,Louisville,KY,US





Property summary


**1** Garages


**4** Bedrooms

**4** Bathrooms

**0** Half baths

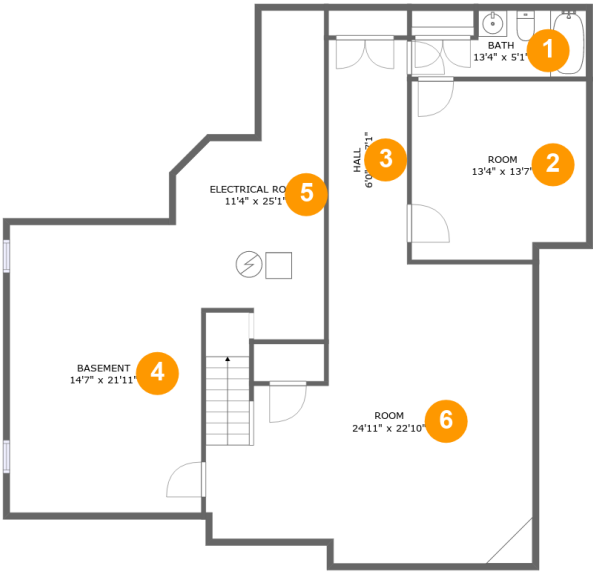
**2** Floors

**3,544** Gross living area sqft

**4,898** Total sqft

Home report

1610 Majestic Woods Pl,Louisville,KY,US



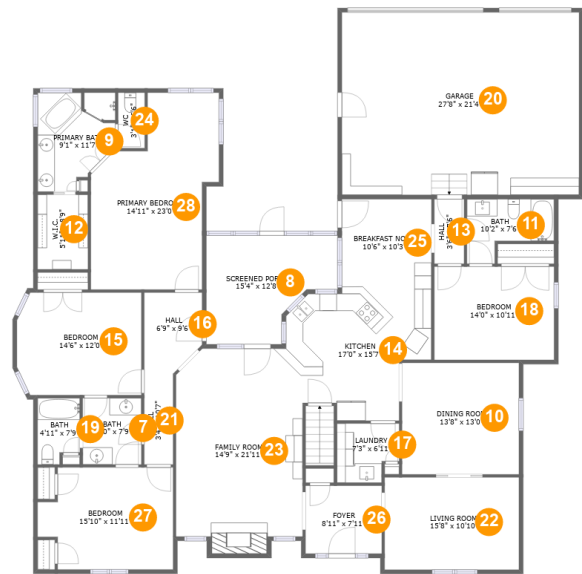
Room dimensions

Floor 1 Total sqft: 1486    Living area: 939

#		Dimensions	sqft	Counted as living area
1	Bath	13'4" x 5'1"	56 sq. ft	Yes
2	Room	13'4" x 13'7"	176 sq. ft	Yes
3	Hall	6'0" x 17'1"	103 sq. ft	Yes
4	Basement	14'7" x 21'11"	314 sq. ft	No
5	Electrical Room	11'4" x 25'1"	195 sq. ft	No
6	Room	24'11" x 22'10"	480 sq. ft	Yes

Home report

1610 Majestic Woods Pl,Louisville,KY,US



Room dimensions

Floor 2 Total sqft: 3412 Living area: 2605

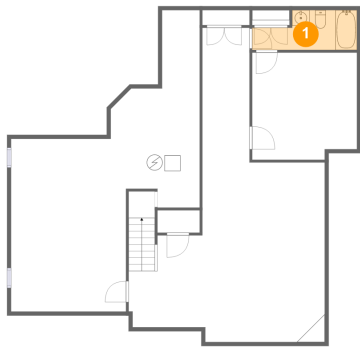
#		Dimensions	sqft	Counted as living area
7	Bath	6'10" x 7'9"	53 sq. ft	Yes
8	Screened Porch	15'4" x 12'8"	157 sq. ft	No
9	Primary Bath	9'1" x 11'7"	89 sq. ft	Yes
10	Dining Room	13'8" x 13'0"	178 sq. ft	Yes
11	Bath	10'2" x 7'6"	58 sq. ft	Yes
12	W.I.C.	5'11" x 8'9"	51 sq. ft	Yes
13	Hall	3'6" x 7'6"	26 sq. ft	Yes
14	Kitchen	17'0" x 15'7"	211 sq. ft	Yes
15	Bedroom	14'6" x 12'0"	169 sq. ft	Yes
16	Hall	6'9" x 9'6"	58 sq. ft	Yes
17	Laundry	7'3" x 6'11"	45 sq. ft	Yes

## Home report

# 1610 Majestic Woods Pl,Louisville,KY,US

#		Dimensions	sqft	Counted as living area
18	Bedroom	14'0" x 10'11"	152 sq. ft	Yes
19	Bath	4'11" x 7'9"	35 sq. ft	Yes
20	Garage	27'8" x 21'4"	590 sq. ft	No
21	Hall	3'4" x 10'7"	36 sq. ft	Yes
22	Living Room	15'8" x 10'10"	169 sq. ft	Yes
23	Family Room	14'9" x 21'11"	327 sq. ft	Yes
24	WC	3'1" x 6'6"	20 sq. ft	Yes
25	Breakfast Nook	10'6" x 10'3"	107 sq. ft	Yes
26	Foyer	8'11" x 7'11"	71 sq. ft	Yes
27	Bedroom	15'10" x 11'11"	170 sq. ft	Yes
28	Primary Bedroom	14'11" x 23'0"	270 sq. ft	Yes

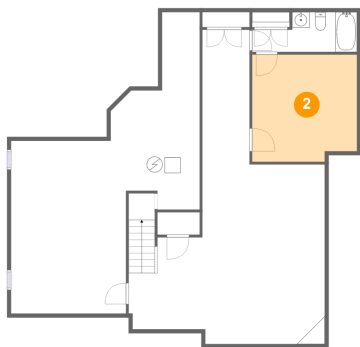
1 Floor 1 - Bath



Dimensions: 13'4" x 5'1"  
Area: 56 sq. ft  
Counted as living area: Yes

Heated: Yes  
Finished: Yes  
Enclosed: Yes  
Contiguous: Yes  
Permitted: Yes  
Wet space: Yes  
Addition: No  
Conversion: No

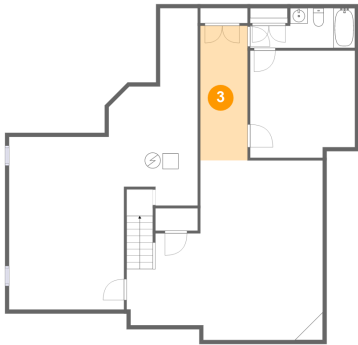
2 Floor 1 - Room



Dimensions: 13'4" x 13'7"  
Area: 176 sq. ft  
Counted as living area: Yes

Heated: Yes  
Finished: Yes  
Enclosed: Yes  
Contiguous: Yes  
Permitted: Yes  
Wet space: No  
Addition: No  
Conversion: No

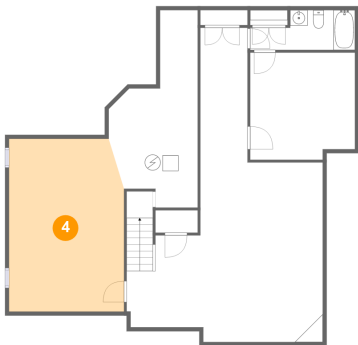
3 Floor 1 - Hall



Dimensions: 6'0" x 17'1"  
Area: 103 sq. ft  
Counted as living area: Yes

Heated: Yes  
Finished: Yes  
Enclosed: Yes  
Contiguous: Yes  
Permitted: Yes  
Wet space: No  
Addition: No  
Conversion: No

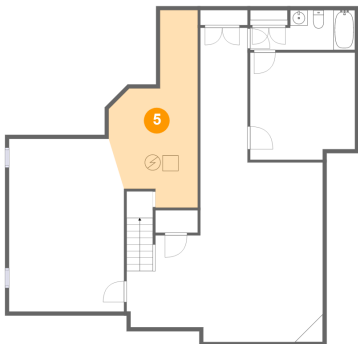
4 Floor 1 - Basement



Dimensions: 14'7" x 21'11"  
Area: 314 sq. ft  
Counted as living area: No

Heated: Yes  
Finished: No  
Enclosed: Yes  
Contiguous: Yes  
Permitted: Yes  
Wet space: No  
Addition: No  
Conversion: No

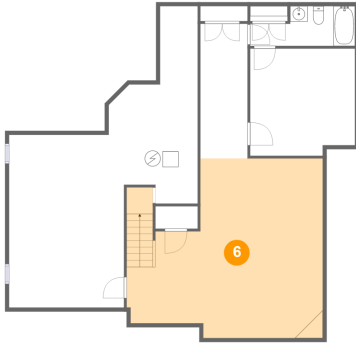
5 Floor 1 - Electrical Room



Dimensions: 11'4" x 25'1"  
Area: 195 sq. ft  
Counted as living area: No

Heated: No  
Finished: No  
Enclosed: Yes  
Contiguous: Yes  
Permitted: Yes  
Wet space: No  
Addition: No  
Conversion: No

## 6 Floor 1 - Room



Dimensions: 24'11" x 22'10"  
Area: 480 sq. ft  
Counted as living area: Yes

Heated: Yes  
Finished: Yes  
Enclosed: Yes  
Contiguous: Yes  
Permitted: Yes  
Wet space: No  
Addition: No  
Conversion: No

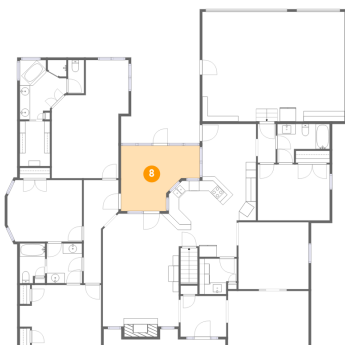
## 7 Floor 2 - Bath



Dimensions: 6'10" x 7'9"  
Area: 53 sq. ft  
Counted as living area: Yes

Heated: Yes  
Finished: Yes  
Enclosed: Yes  
Contiguous: Yes  
Permitted: Yes  
Wet space: Yes  
Addition: No  
Conversion: No

## 8 Floor 2 - Screened Porch



Dimensions: 15'4" x 12'8"  
Area: 157 sq. ft  
Counted as living area: No

Heated: No  
Finished: Yes  
Enclosed: No  
Contiguous: Yes  
Permitted: Yes  
Wet space: No  
Addition: No  
Conversion: No

## 9 Floor 2 - Primary Bath



Dimensions: 9'1" x 11'7"  
Area: 89 sq. ft  
Counted as living area: Yes

Heated: Yes  
Finished: Yes  
Enclosed: Yes  
Contiguous: Yes  
Permitted: Yes  
Wet space: Yes  
Addition: No  
Conversion: No

## 10 Floor 2 - Dining Room



Dimensions: 13'8" x 13'0"  
Area: 178 sq. ft  
Counted as living area: Yes

Heated: Yes  
Finished: Yes  
Enclosed: Yes  
Contiguous: Yes  
Permitted: Yes  
Wet space: No  
Addition: No  
Conversion: No

## 11 Floor 2 - Bath



Dimensions: 10'2" x 7'6"  
Area: 58 sq. ft  
Counted as living area: Yes

Heated: Yes  
Finished: Yes  
Enclosed: Yes  
Contiguous: Yes  
Permitted: Yes  
Wet space: Yes  
Addition: No  
Conversion: No



## 12 Floor 2 - W.I.C.



Dimensions: 5'11" x 8'9"  
Area: 51 sq. ft  
Counted as living area: Yes

Heated: Yes  
Finished: Yes  
Enclosed: Yes  
Contiguous: Yes  
Permitted: Yes  
Wet space: No  
Addition: No  
Conversion: No

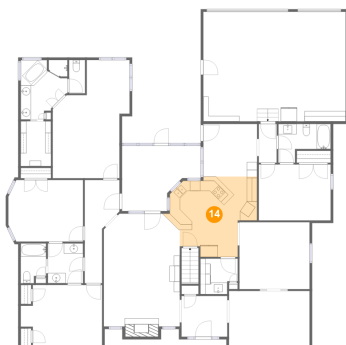
## 13 Floor 2 - Hall



Dimensions: 3'6" x 7'6"  
Area: 26 sq. ft  
Counted as living area: Yes

Heated: Yes  
Finished: Yes  
Enclosed: Yes  
Contiguous: Yes  
Permitted: Yes  
Wet space: No  
Addition: No  
Conversion: No

## 14 Floor 2 - Kitchen



Dimensions: 17'0" x 15'7"  
Area: 211 sq. ft  
Counted as living area: Yes

Heated: Yes  
Finished: Yes  
Enclosed: Yes  
Contiguous: Yes  
Permitted: Yes  
Wet space: No  
Addition: No  
Conversion: No

## 15 Floor 2 - Bedroom



Dimensions: 14'6" x 12'0"  
Area: 169 sq. ft  
Counted as living area: Yes

Heated: Yes  
Finished: Yes  
Enclosed: Yes  
Contiguous: Yes  
Permitted: Yes  
Wet space: No  
Addition: No  
Conversion: No

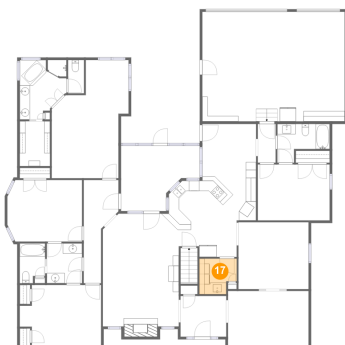
## 16 Floor 2 - Hall



Dimensions: 6'9" x 9'6"  
Area: 58 sq. ft  
Counted as living area: Yes

Heated: Yes  
Finished: Yes  
Enclosed: Yes  
Contiguous: Yes  
Permitted: Yes  
Wet space: No  
Addition: No  
Conversion: No

## 17 Floor 2 - Laundry



Dimensions: 7'3" x 6'11"  
Area: 45 sq. ft  
Counted as living area: Yes

Heated: Yes  
Finished: Yes  
Enclosed: Yes  
Contiguous: Yes  
Permitted: Yes  
Wet space: No  
Addition: No  
Conversion: No

## 18 Floor 2 - Bedroom



Dimensions: 14'0" x 10'11"  
Area: 152 sq. ft  
Counted as living area: Yes

Heated: Yes  
Finished: Yes  
Enclosed: Yes  
Contiguous: Yes  
Permitted: Yes  
Wet space: No  
Addition: No  
Conversion: No

## 19 Floor 2 - Bath



Dimensions: 4'11" x 7'9"  
Area: 35 sq. ft  
Counted as living area: Yes

Heated: Yes  
Finished: Yes  
Enclosed: Yes  
Contiguous: Yes  
Permitted: Yes  
Wet space: Yes  
Addition: No  
Conversion: No

## 20 Floor 2 - Garage



Dimensions: 27'8" x 21'4"  
Area: 590 sq. ft  
Counted as living area: No

Heated: No  
Finished: No  
Enclosed: Yes  
Contiguous: Yes  
Permitted: Yes  
Wet space: No  
Addition: No  
Conversion: No

## 21 Floor 2 - Hall



Dimensions: 3'4" x 10'7"  
Area: 36 sq. ft  
Counted as living area: Yes

Heated: Yes  
Finished: Yes  
Enclosed: Yes  
Contiguous: Yes  
Permitted: Yes  
Wet space: No  
Addition: No  
Conversion: No

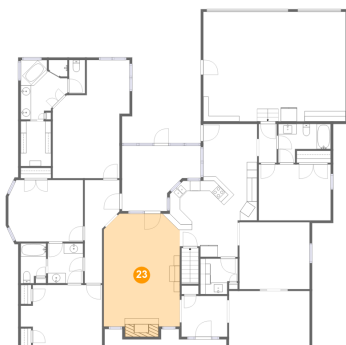
## 22 Floor 2 - Living Room



Dimensions: 15'8" x 10'10"  
Area: 169 sq. ft  
Counted as living area: Yes

Heated: Yes  
Finished: Yes  
Enclosed: Yes  
Contiguous: Yes  
Permitted: Yes  
Wet space: No  
Addition: No  
Conversion: No

## 23 Floor 2 - Family Room



Dimensions: 14'9" x 21'11"  
Area: 327 sq. ft  
Counted as living area: Yes

Heated: Yes  
Finished: Yes  
Enclosed: Yes  
Contiguous: Yes  
Permitted: Yes  
Wet space: No  
Addition: No  
Conversion: No

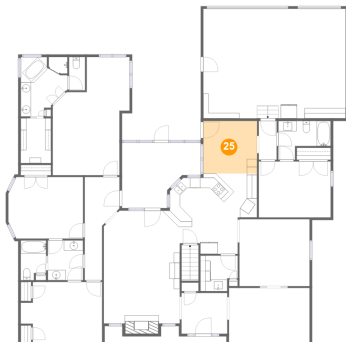
## 24 Floor 2 - WC



Dimensions: 3'1" x 6'6"  
Area: 20 sq. ft  
Counted as living area: Yes

Heated: Yes  
Finished: Yes  
Enclosed: Yes  
Contiguous: Yes  
Permitted: Yes  
Wet space: Yes  
Addition: No  
Conversion: No

## 25 Floor 2 - Breakfast Nook



Dimensions: 10'6" x 10'3"  
Area: 107 sq. ft  
Counted as living area: Yes

Heated: Yes  
Finished: Yes  
Enclosed: Yes  
Contiguous: Yes  
Permitted: Yes  
Wet space: No  
Addition: No  
Conversion: No

## 26 Floor 2 - Foyer



Dimensions: 8'11" x 7'11"  
Area: 71 sq. ft  
Counted as living area: Yes

Heated: Yes  
Finished: Yes  
Enclosed: Yes  
Contiguous: Yes  
Permitted: Yes  
Wet space: No  
Addition: No  
Conversion: No

27 Floor 2 - Bedroom



Dimensions: 15'10" x 11'11"  
Area: 170 sq. ft  
Counted as living area: Yes

Heated: Yes  
Finished: Yes  
Enclosed: Yes  
Contiguous: Yes  
Permitted: Yes  
Wet space: No  
Addition: No  
Conversion: No

28 Floor 2 - Primary Bedroom



Dimensions: 14'11" x 23'0"  
Area: 270 sq. ft  
Counted as living area: Yes

Heated: Yes  
Finished: Yes  
Enclosed: Yes  
Contiguous: Yes  
Permitted: Yes  
Wet space: No  
Addition: No  
Conversion: No