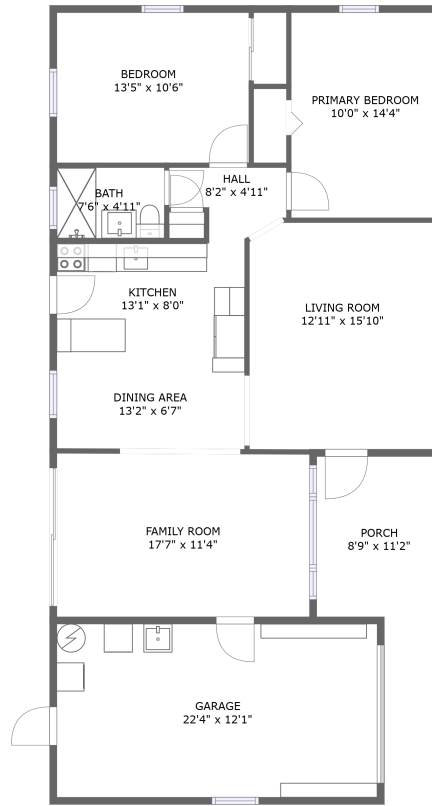


2301 38th Street North, Disston Heights, St. Petersburg, Pinellas County, Florida, United

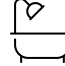



FLOOR 1

Property Summary

 **1** garages

 **2** bedrooms

 **1** bathrooms

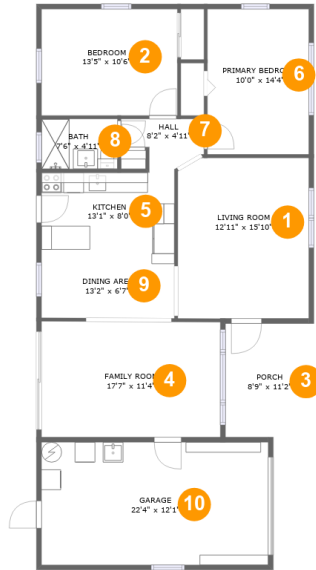
 **0** half baths

 **1** floors

 **1,080**
Gross Living
Area sqft

 **1,475**
total sqft

2301 38th Street North, Disston Heights, St. Petersburg, Pinellas County, Florida, United



Room Dimensions

Floor 1

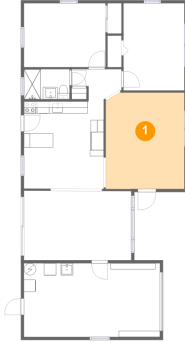
Total sqft: 1475

Living area: 1080

#	Room name	Dimensions	Area (sqft)	Counted as Living Area
1	Living Room	12'11" x 15'10"	203 sq. ft	Yes
2	Bedroom	13'5" x 10'6"	141 sq. ft	Yes
3	Porch	8'9" x 11'2"	98 sq. ft	No
4	Family Room	17'7" x 11'4"	201 sq. ft	Yes
5	Kitchen	13'1" x 8'0"	101 sq. ft	Yes
6	Primary Bedroom	10'0" x 14'4"	143 sq. ft	Yes
7	Hall	8'2" x 4'11"	32 sq. ft	Yes
8	Bath	7'6" x 4'11"	37 sq. ft	Yes
9	Dining Area	13'2" x 6'7"	87 sq. ft	Yes
10	Garage	22'4" x 12'1"	271 sq. ft	No

2301 38th Street North, Disston Heights, St. Petersburg, Pinellas County, Florida, United

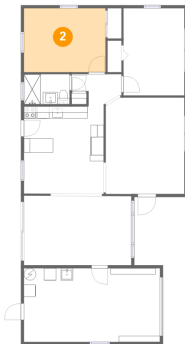
1 Floor 1 - Living Room



Dimensions: 12'11" x 15'10"
Area: 203 sq. ft
Counted as Living Area:
Yes

Heated: Yes
Finished: Yes
Enclosed: Yes
Contiguous:
Yes
Permitted: Yes
Wet Space: No
Addition: No
Conversion: No

2 Floor 1 - Bedroom



Dimensions: 13'5" x 10'6"
Area: 141 sq. ft
Counted as Living Area:
Yes

Heated: Yes
Finished: Yes
Enclosed: Yes
Contiguous:
Yes
Permitted: Yes
Wet Space: No
Addition: No
Conversion: No

2301 38th Street North, Disston Heights, St. Petersburg, Pinellas County, Florida, United

3 Floor 1 - Porch



Dimensions: 8'9" x 11'2"
Area: 98 sq. ft
Counted as Living Area: No

Heated: No
Finished: Yes
Enclosed: No
Contiguous: Yes
Permitted: Yes
Wet Space: No
Addition: No
Conversion: No

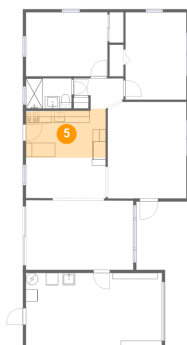
4 Floor 1 - Family Room



Dimensions: 17'7" x 11'4"
Area: 201 sq. ft
Counted as Living Area: Yes

Heated: Yes
Finished: Yes
Enclosed: Yes
Contiguous: Yes
Permitted: Yes
Wet Space: No
Addition: No
Conversion: No

5 Floor 1 - Kitchen



Dimensions: 13'1" x 8'0"
Area: 101 sq. ft
Counted as Living Area: Yes

Heated: Yes
Finished: Yes
Enclosed: Yes
Contiguous: Yes
Permitted: Yes
Wet Space: No
Addition: No
Conversion: No

2301 38th Street North, Disston Heights, St. Petersburg, Pinellas County, Florida, United

6 Floor 1 - Primary Bedroom



Dimensions: 10'0" x 14'4"
Area: 143 sq. ft
Counted as Living Area:
Yes

Heated: Yes
Finished: Yes
Enclosed: Yes
Contiguous:
Yes
Permitted: Yes
Wet Space: No
Addition: No
Conversion: No

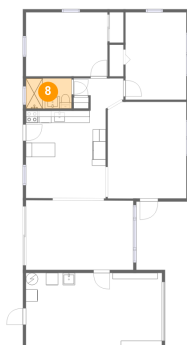
7 Floor 1 - Hall



Dimensions: 8'2" x 4'11"
Area: 32 sq. ft
Counted as Living Area:
Yes

Heated: Yes
Finished: Yes
Enclosed: Yes
Contiguous:
Yes
Permitted: Yes
Wet Space: No
Addition: No
Conversion: No

8 Floor 1 - Bath

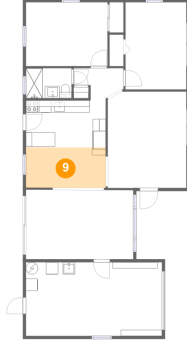


Dimensions: 7'6" x 4'11"
Area: 37 sq. ft
Counted as Living Area:
Yes

Heated: Yes
Finished: Yes
Enclosed: Yes
Contiguous:
Yes
Permitted: Yes
Wet Space: Yes
Addition: No
Conversion: No

2301 38th Street North, Disston Heights, St. Petersburg, Pinellas County, Florida, United

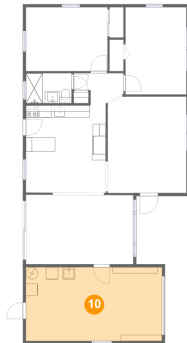
9 Floor 1 - Dining Area



Dimensions: 13'2" x 6'7"
Area: 87 sq. ft
Counted as Living Area:
Yes

Heated: Yes
Finished: Yes
Enclosed: Yes
Contiguous:
Yes
Permitted: Yes
Wet Space: No
Addition: No
Conversion: No

10 Floor 1 - Garage



Dimensions: 22'4" x 12'1"
Area: 271 sq. ft
Counted as Living Area: No

Heated: No
Finished: No
Enclosed: Yes
Contiguous: Yes
Permitted: Yes
Wet Space: No
Addition: No
Conversion: No