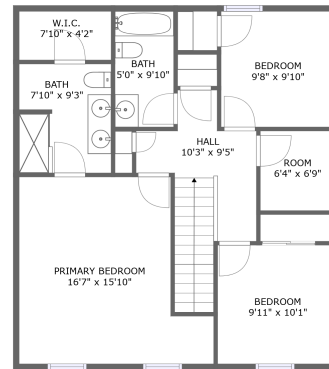


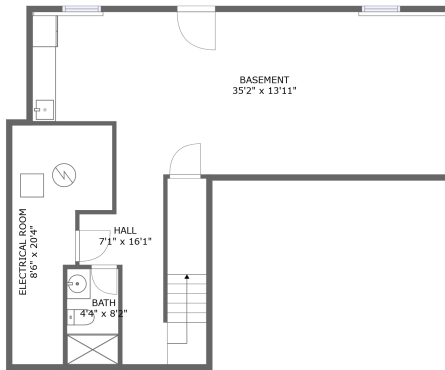
6915 Drury Drive, Louisville, Jefferson County, Kentucky, United States, 40229



FLOOR 2



FLOOR 3



FLOOR 1

Property Summary



3 floors



3 bedrooms



3 bathrooms



2,537 total sqft

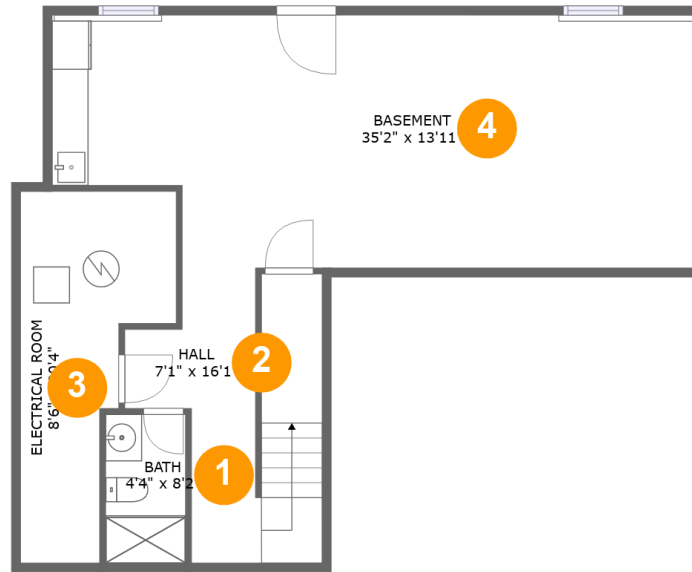


0 garages



1,709 Gross Living Area sqft

6915 Drury Drive, Louisville, Jefferson County, Kentucky, United States, 40229



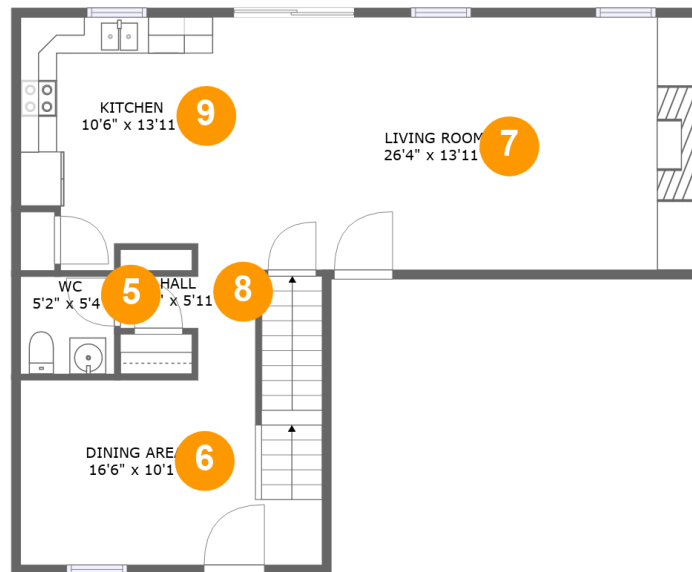
Room Dimensions

Floor 1

Total sqft: 828

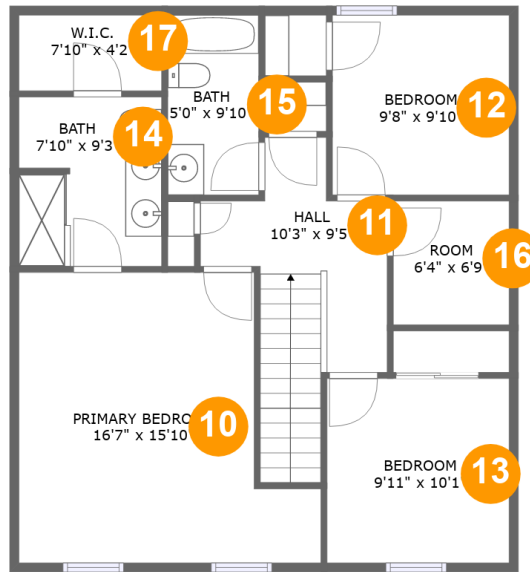
Living area: 0

#	Room name	Dimensions	Area (sqft)	Counted as Living Area
1	Bath	4'4" x 8'2"	36 sq. ft	No
2	Hall	7'1" x 16'1"	128 sq. ft	No
3	Electrical Room	8'6" x 20'4"	123 sq. ft	No
4	Basement	35'2" x 13'11"	454 sq. ft	No

**6915 Drury Drive, Louisville, Jefferson County,
Kentucky, United States, 40229****Room Dimensions****Floor 2****Total sqft: 845****Living area: 845**

#	Room name	Dimensions	Area (sqft)	Counted as Living Area
5	Wc	5'2" x 5'4"	27 sq. ft	Yes
6	Dining Area	16'6" x 10'1"	185 sq. ft	Yes
7	Living Room	26'4" x 13'11"	365 sq. ft	Yes
8	Hall	7'5" x 5'11"	31 sq. ft	Yes
9	Kitchen	10'6" x 13'11"	132 sq. ft	Yes

6915 Drury Drive, Louisville, Jefferson County, Kentucky, United States, 40229



Room Dimensions

Floor 3

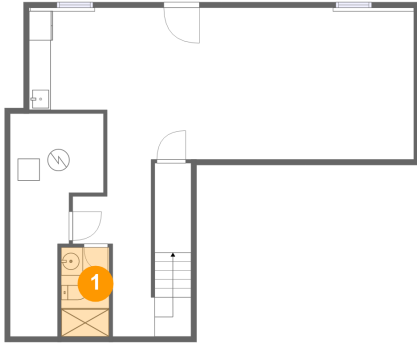
Total sqft: 864

Living area: 864

#	Room name	Dimensions	Area (sqft)	Counted as Living Area
10	Primary Bedroom	16'7" x 15'10"	220 sq. ft	Yes
11	Hall	10'3" x 9'5"	109 sq. ft	Yes
12	Bedroom	9'8" x 9'10"	95 sq. ft	Yes
13	Bedroom	9'11" x 10'1"	101 sq. ft	Yes
14	Bath	7'10" x 9'3"	72 sq. ft	Yes
15	Bath	5'0" x 9'10"	49 sq. ft	Yes
16	Room	6'4" x 6'9"	43 sq. ft	Yes
17	W.i.c.	7'10" x 4'2"	32 sq. ft	Yes

6915 Drury Drive, Louisville, Jefferson County, Kentucky, United States, 40229

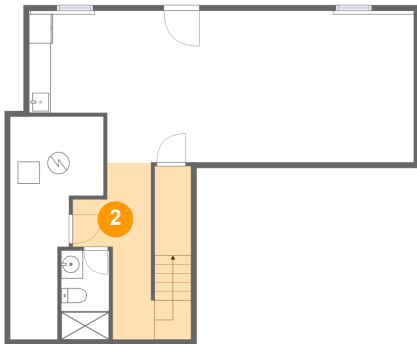
1 Floor 1 - Bath



Dimensions: 4'4" x 8'2"
Area: 36 sq. ft
Counted as Living Area: No

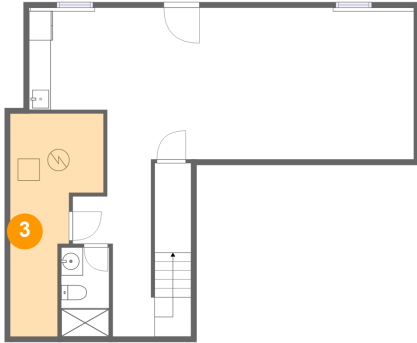
Heated: Yes
Finished: Yes
Enclosed: Yes
Contiguous: No
Permitted: Yes
Wet Space: Yes
Addition: No
Conversion: No

2 Floor 1 - Hall



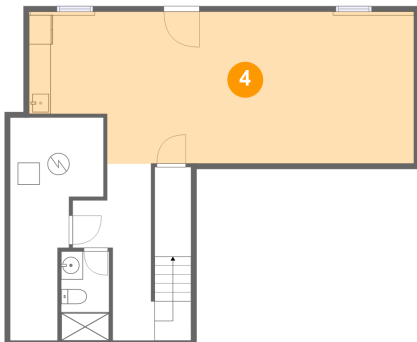
Dimensions: 7'1" x 16'1"
Area: 128 sq. ft
Counted as Living Area: No

Heated: Yes
Finished: Yes
Enclosed: Yes
Contiguous: No
Permitted: Yes
Wet Space: No
Addition: No
Conversion: No

**6915 Drury Drive, Louisville, Jefferson County,
Kentucky, United States, 40229****3 Floor 1 - Electrical Room**

Dimensions: 8'6" x 20'4"
Area: 123 sq. ft
Counted as Living Area: No

Heated: No
Finished: No
Enclosed: Yes
Contiguous: Yes
Permitted: Yes
Wet Space: No
Addition: No
Conversion: No

4 Floor 1 - Basement

Dimensions: 35'2" x 13'11"
Area: 454 sq. ft
Counted as Living Area: No

Heated: No
Finished: Yes
Enclosed: Yes
Contiguous: Yes
Permitted: Yes
Wet Space: No
Addition: No
Conversion: No

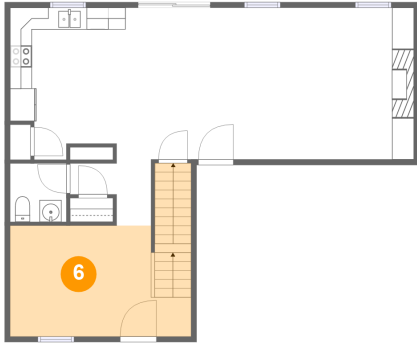
5 Floor 2 - Wc

Dimensions: 5'2" x 5'4"
Area: 27 sq. ft
Counted as Living Area:
Yes

Heated: Yes
Finished: Yes
Enclosed: Yes
Contiguous:
Yes
Permitted: Yes
Wet Space: Yes
Addition: No
Conversion: No

6915 Drury Drive, Louisville, Jefferson County, Kentucky, United States, 40229

6 Floor 2 - Dining Area



Dimensions: 16'6" x 10'1"
Area: 185 sq. ft
Counted as Living Area:
Yes

Heated: Yes
Finished: Yes
Enclosed: Yes
Contiguous:
Yes
Permitted: Yes
Wet Space: No
Addition: No
Conversion: No

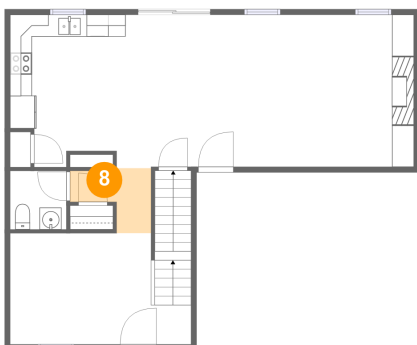
7 Floor 2 - Living Room



Dimensions: 26'4" x 13'11"
Area: 365 sq. ft
Counted as Living Area:
Yes

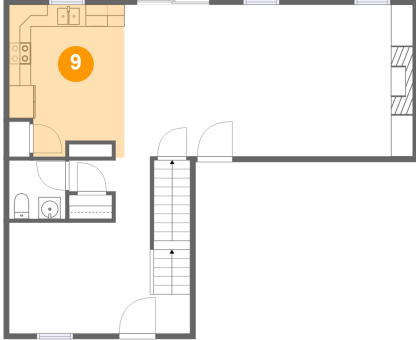
Heated: Yes
Finished: Yes
Enclosed: Yes
Contiguous:
Yes
Permitted: Yes
Wet Space: No
Addition: No
Conversion: No

8 Floor 2 - Hall



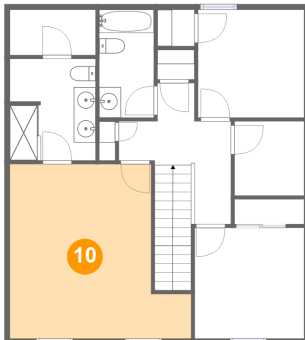
Dimensions: 7'5" x 5'11"
Area: 31 sq. ft
Counted as Living Area:
Yes

Heated: Yes
Finished: Yes
Enclosed: Yes
Contiguous:
Yes
Permitted: Yes
Wet Space: No
Addition: No
Conversion: No

**6915 Drury Drive, Louisville, Jefferson County,
Kentucky, United States, 40229****9 Floor 2 - Kitchen**

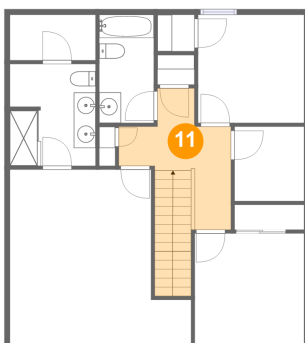
Dimensions: 10'6" x 13'11"
Area: 132 sq. ft
Counted as Living Area:
Yes

Heated: Yes
Finished: Yes
Enclosed: Yes
Contiguous:
Yes
Permitted: Yes
Wet Space: No
Addition: No
Conversion: No

10 Floor 3 - Primary Bedroom

Dimensions: 16'7" x 15'10"
Area: 220 sq. ft
Counted as Living Area:
Yes

Heated: Yes
Finished: Yes
Enclosed: Yes
Contiguous:
Yes
Permitted: Yes
Wet Space: No
Addition: No
Conversion: No

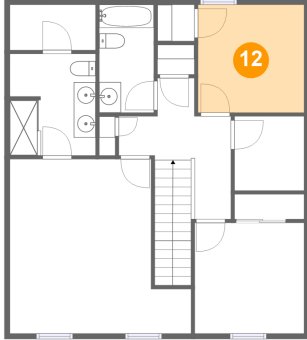
11 Floor 3 - Hall

Dimensions: 10'3" x 9'5"
Area: 109 sq. ft
Counted as Living Area:
Yes

Heated: Yes
Finished: Yes
Enclosed: Yes
Contiguous:
Yes
Permitted: Yes
Wet Space: No
Addition: No
Conversion: No

**6915 Drury Drive, Louisville, Jefferson County,
Kentucky, United States, 40229**

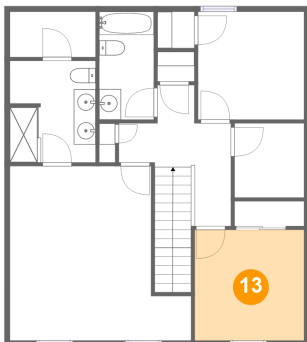
12 Floor 3 - Bedroom



Dimensions: 9'8" x 9'10"
Area: 95 sq. ft
Counted as Living Area:
Yes

Heated: Yes
Finished: Yes
Enclosed: Yes
Contiguous:
Yes
Permitted: Yes
Wet Space: No
Addition: No
Conversion: No

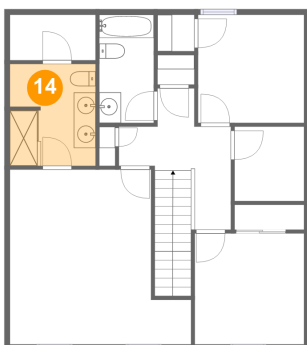
13 Floor 3 - Bedroom



Dimensions: 9'11" x 10'1"
Area: 101 sq. ft
Counted as Living Area:
Yes

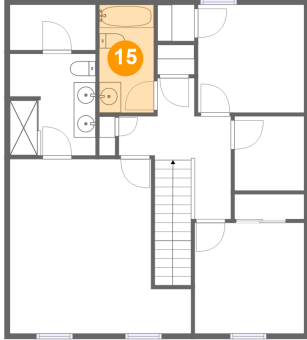
Heated: Yes
Finished: Yes
Enclosed: Yes
Contiguous:
Yes
Permitted: Yes
Wet Space: No
Addition: No
Conversion: No

14 Floor 3 - Bath



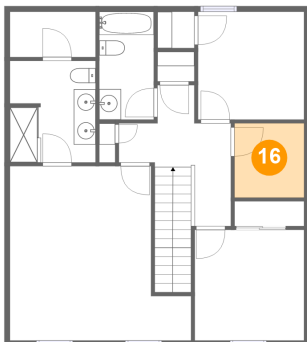
Dimensions: 7'10" x 9'3"
Area: 72 sq. ft
Counted as Living Area:
Yes

Heated: Yes
Finished: Yes
Enclosed: Yes
Contiguous:
Yes
Permitted: Yes
Wet Space: Yes
Addition: No
Conversion: No

**6915 Drury Drive, Louisville, Jefferson County,
Kentucky, United States, 40229****15 Floor 3 - Bath**

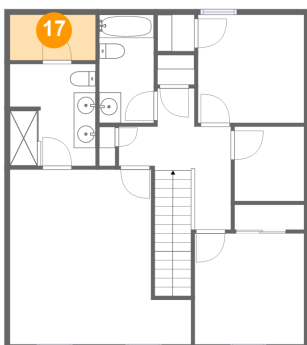
Dimensions: 5'0" x 9'10"
Area: 49 sq. ft
Counted as Living Area:
Yes

Heated: Yes
Finished: Yes
Enclosed: Yes
Contiguous:
Yes
Permitted: Yes
Wet Space: Yes
Addition: No
Conversion: No

16 Floor 3 - Room

Dimensions: 6'4" x 6'9"
Area: 43 sq. ft
Counted as Living Area:
Yes

Heated: Yes
Finished: Yes
Enclosed: Yes
Contiguous:
Yes
Permitted: Yes
Wet Space: No
Addition: No
Conversion: No

17 Floor 3 - W.i.c.

Dimensions: 7'10" x 4'2"
Area: 32 sq. ft
Counted as Living Area:
Yes

Heated: Yes
Finished: Yes
Enclosed: Yes
Contiguous:
Yes
Permitted: Yes
Wet Space: No
Addition: No
Conversion: No