

Home report

20 Regatta Crescent, Whitby, ON, CA



Total Area: 2217 sq. ft

Below Ground: 631 sq. ft, Floor 2: 706 sq. ft, Floor 3: 880 sq. ft

Excluded: Electrical room 61 sq. ft, Garage 213 sq. ft, Balcony 59 sq. ft, Walls: 176 sq. ft

Property summary

 **3** Floors

 **3** Bedrooms

 **2** Bathrooms

Home report

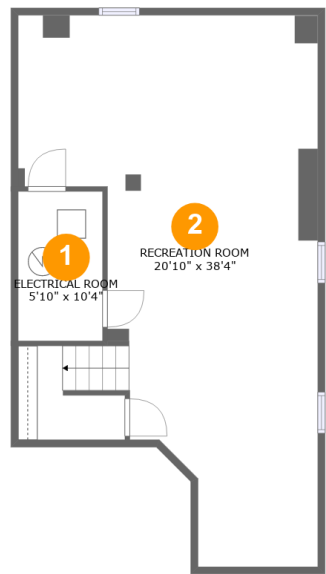
20 Regatta Crescent, Whitby, ON, CA

 **1**
Half baths

 **1**
Garages

Home report

20 Regatta Crescent, Whitby, ON, CA



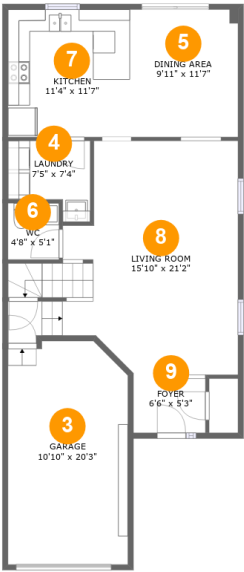
Room dimensions

Floor 1 Below ground Total:631sqft Excluded: 61sqft

#		Max Dimensions	sqft	Included
1	Electrical Room	5'10" x 10'4"	61 sq. ft	No
2	Recreation Room	20'10" x 38'4"	622 sq. ft	Yes

Home report

20 Regatta Crescent, Whitby, ON, CA



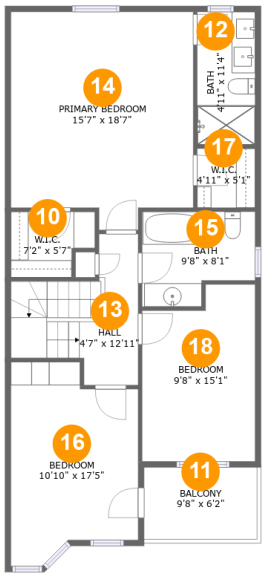
Room dimensions

Floor 2 Total:706sqft Excluded: 213sqft

#		Max Dimensions	sqft	Included
3	Garage	10'10" x 20'3"	213 sq. ft	No
4	Laundry	7'5" x 7'4"	45 sq. ft	Yes
5	Dining Area	9'11" x 11'7"	114 sq. ft	Yes
6	WC	4'8" x 5'1"	24 sq. ft	Yes
7	Kitchen	11'4" x 11'7"	126 sq. ft	Yes
8	Living Room	15'10" x 21'2"	331 sq. ft	Yes
9	Foyer	6'6" x 5'3"	34 sq. ft	Yes

Home report

20 Regatta Crescent, Whitby, ON, CA



Room dimensions

Floor 3 Total:880sqft Excluded: 59sqft

#		Max Dimensions	sqft	Included
10	W.I.C.	7'2" x 5'7"	35 sq. ft	Yes
11	Balcony	9'8" x 6'2"	59 sq. ft	No
12	Bath	4'11" x 11'4"	56 sq. ft	Yes
13	Hall	4'7" x 12'11"	95 sq. ft	Yes
14	Primary Bedroom	15'7" x 18'7"	266 sq. ft	Yes
15	Bath	9'8" x 8'1"	67 sq. ft	Yes
16	Bedroom	10'10" x 17'5"	162 sq. ft	Yes
17	W.I.C.	4'11" x 5'1"	25 sq. ft	Yes
18	Bedroom	9'8" x 15'1"	133 sq. ft	Yes

1 Floor 1 - Electrical Room



Max Dimensions: 5'10" x 10'4"
Calculated Area: 61 sq. ft
Included: No

Heated: No
Finished: No
Enclosed: Yes
Contiguous: Yes
Permitted: Yes
Wet space: No
Addition: No
Conversion: No

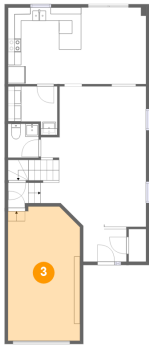
2 Floor 1 - Recreation Room



Max Dimensions: 20'10" x 38'4"
Calculated Area: 622 sq. ft
Included: No

Heated: Yes
Finished: Yes
Enclosed: Yes
Contiguous: No
Permitted: Yes
Wet space: No
Addition: No
Conversion: No

3 Floor 2 - Garage



Max Dimensions: 10'10" x 20'3"
Calculated Area: 213 sq. ft
Included: No

Heated: No
Finished: No
Enclosed: Yes
Contiguous: Yes
Permitted: Yes
Wet space: No
Addition: No
Conversion: No

4 Floor 2 - Laundry



Max Dimensions: 7'5" x 7'4"
Calculated Area: 45 sq. ft
Included: Yes

Heated: Yes
Finished: Yes
Enclosed: Yes
Contiguous: Yes
Permitted: Yes
Wet space: No
Addition: No
Conversion: No

5 Floor 2 - Dining Area



Max Dimensions: 9'11" x 11'7"
Calculated Area: 114 sq. ft
Included: Yes

Heated: Yes
Finished: Yes
Enclosed: Yes
Contiguous: Yes
Permitted: Yes
Wet space: No
Addition: No
Conversion: No

6 Floor 2 - WC



Max Dimensions: 4'8" x 5'1"
Calculated Area: 24 sq. ft
Included: Yes

Heated: Yes
Finished: Yes
Enclosed: Yes
Contiguous: Yes
Permitted: Yes
Wet space: Yes
Addition: No
Conversion: No

7 Floor 2 - Kitchen



Max Dimensions: 11'4" x 11'7"
Calculated Area: 126 sq. ft
Included: Yes

Heated: Yes
Finished: Yes
Enclosed: Yes
Contiguous: Yes
Permitted: Yes
Wet space: No
Addition: No
Conversion: No

8 Floor 2 - Living Room



Max Dimensions: 15'10" x 21'2"
Calculated Area: 331 sq. ft
Included: Yes

Heated: Yes
Finished: Yes
Enclosed: Yes
Contiguous: Yes
Permitted: Yes
Wet space: No
Addition: No
Conversion: No

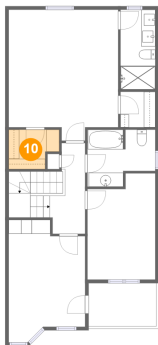
9 Floor 2 - Foyer



Max Dimensions: 6'6" x 5'3"
Calculated Area: 34 sq. ft
Included: Yes

Heated: Yes
Finished: Yes
Enclosed: Yes
Contiguous: Yes
Permitted: Yes
Wet space: No
Addition: No
Conversion: No

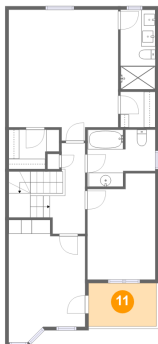
10 Floor 3 - W.I.C.



Max Dimensions: 7'2" x 5'7"
Calculated Area: 35 sq. ft
Included: Yes

Heated: Yes
Finished: Yes
Enclosed: Yes
Contiguous: Yes
Permitted: Yes
Wet space: No
Addition: No
Conversion: No

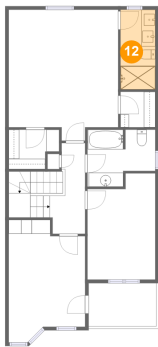
11 Floor 3 - Balcony



Max Dimensions: 9'8" x 6'2"
Calculated Area: 59 sq. ft
Included: No

Heated: No
Finished: Yes
Enclosed: No
Contiguous: Yes
Permitted: Yes
Wet space: No
Addition: No
Conversion: No

12 Floor 3 - Bath



Max Dimensions: 4'11" x 11'4"
Calculated Area: 56 sq. ft
Included: Yes

Heated: Yes
Finished: Yes
Enclosed: Yes
Contiguous: Yes
Permitted: Yes
Wet space: Yes
Addition: No
Conversion: No

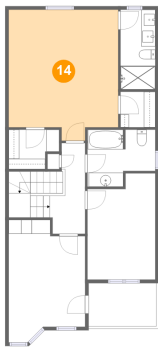
13 Floor 3 - Hall



Max Dimensions: 4'7" x 12'11"
Calculated Area: 95 sq. ft
Included: Yes

Heated: Yes
Finished: Yes
Enclosed: Yes
Contiguous: Yes
Permitted: Yes
Wet space: No
Addition: No
Conversion: No

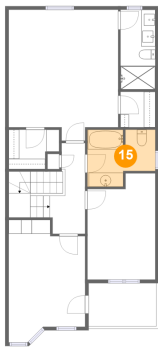
14 Floor 3 - Primary Bedroom



Max Dimensions: 15'7" x 18'7"
Calculated Area: 266 sq. ft
Included: Yes

Heated: Yes
Finished: Yes
Enclosed: Yes
Contiguous: Yes
Permitted: Yes
Wet space: No
Addition: No
Conversion: No

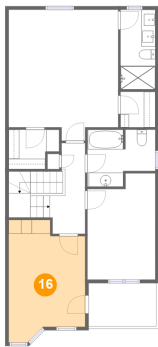
15 Floor 3 - Bath



Max Dimensions: 9'8" x 8'1"
Calculated Area: 67 sq. ft
Included: Yes

Heated: Yes
Finished: Yes
Enclosed: Yes
Contiguous: Yes
Permitted: Yes
Wet space: Yes
Addition: No
Conversion: No

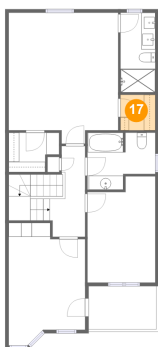
16 Floor 3 - Bedroom



Max Dimensions: 10'10" x 17'5"
Calculated Area: 162 sq. ft
Included: Yes

Heated: Yes
Finished: Yes
Enclosed: Yes
Contiguous: Yes
Permitted: Yes
Wet space: No
Addition: No
Conversion: No

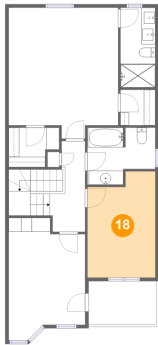
17 Floor 3 - W.I.C.



Max Dimensions: 4'11" x 5'1"
Calculated Area: 25 sq. ft
Included: Yes

Heated: Yes
Finished: Yes
Enclosed: Yes
Contiguous: Yes
Permitted: Yes
Wet space: No
Addition: No
Conversion: No

18 Floor 3 - Bedroom



Max Dimensions: 9'8" x 15'1"
Calculated Area: 133 sq. ft
Included: Yes

Heated: Yes
Finished: Yes
Enclosed: Yes
Contiguous: Yes
Permitted: Yes
Wet space: No
Addition: No
Conversion: No