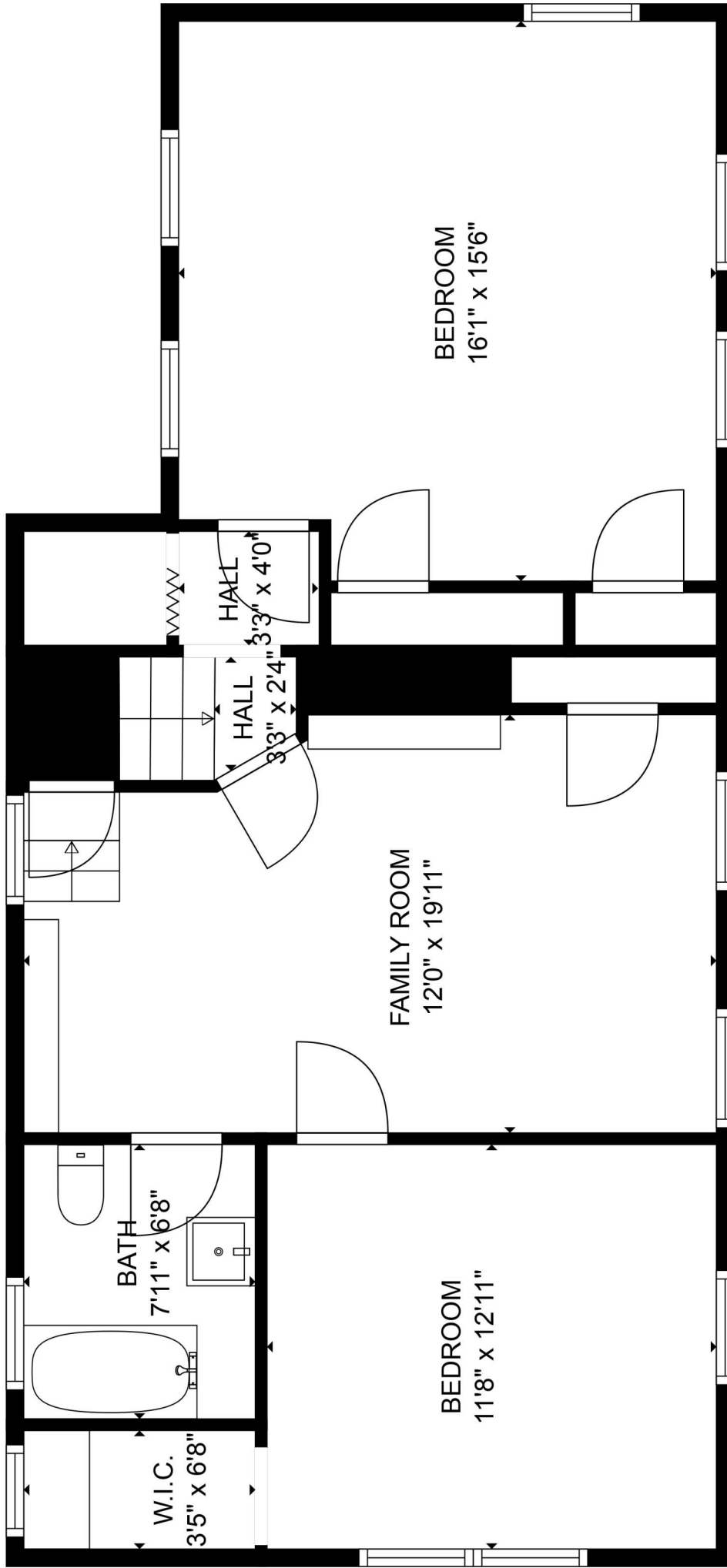


TOTAL: 1781 sq. ft
 FLOOR 1: 970 sq. ft, FLOOR 2: 811 sq. ft, FLOOR 3: 0 sq. ft
 EXCLUDED AREAS: PATIO: 430 sq. ft, FIREPLACE: 12 sq. ft, LOW CEILING: 78 sq. ft,
 ATTIC: 323 sq. ft
 SIZE AND DIMENSIONS ARE APPROXIMATE, ACTUAL MAY VARY.



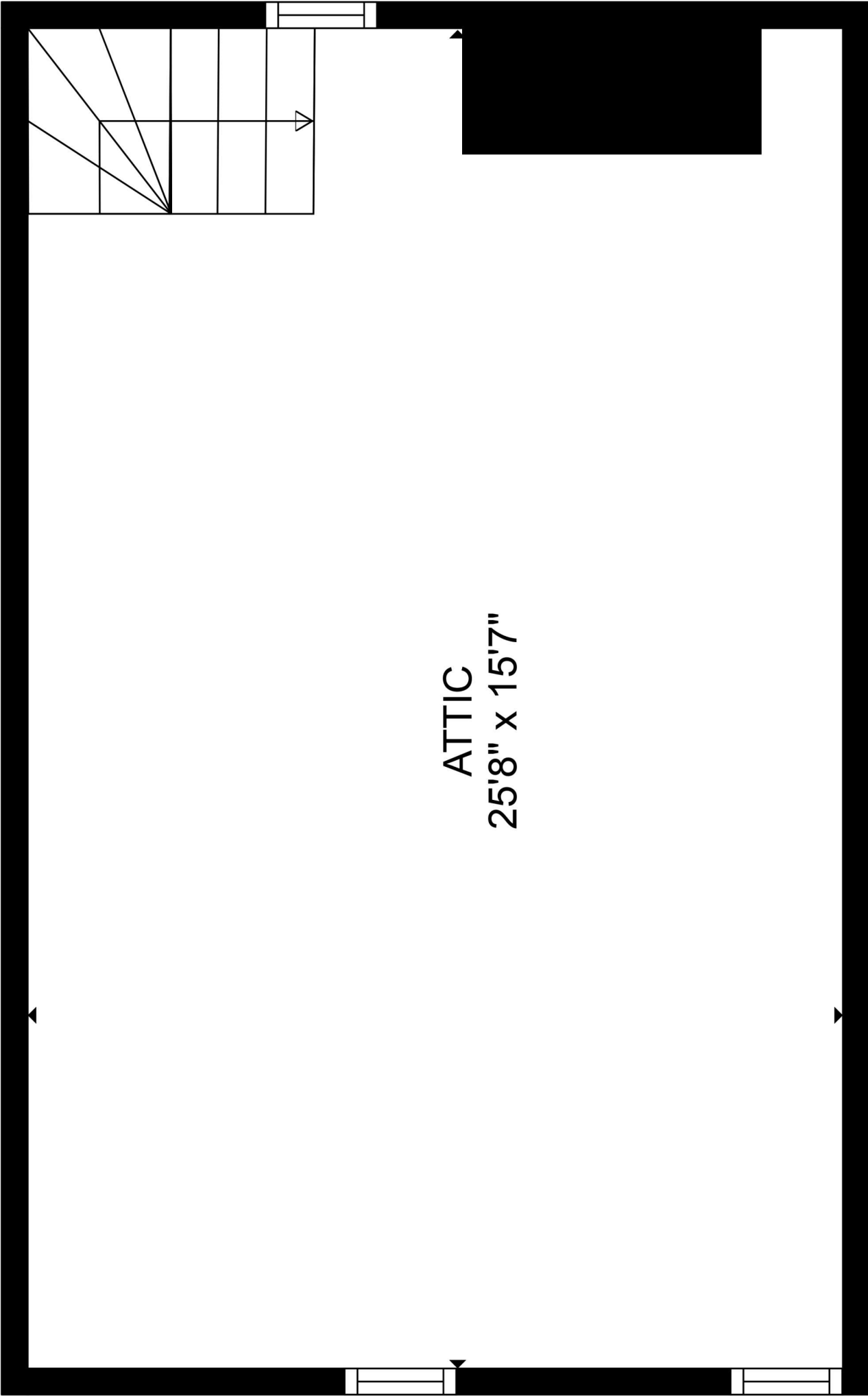


TOTAL: 1781 sq. ft

FLOOR 1: 970 sq. ft, FLOOR 2: 811 sq. ft, FLOOR 3: 0 sq. ft
 EXCLUDED AREAS: PATIO: 430 sq. ft, FIREPLACE: 12 sq. ft, LOW CEILING: 78 sq. ft,
 ATTIC: 323 sq. ft

SIZE AND DIMENSIONS ARE APPROXIMATE, ACTUAL MAY VARY.





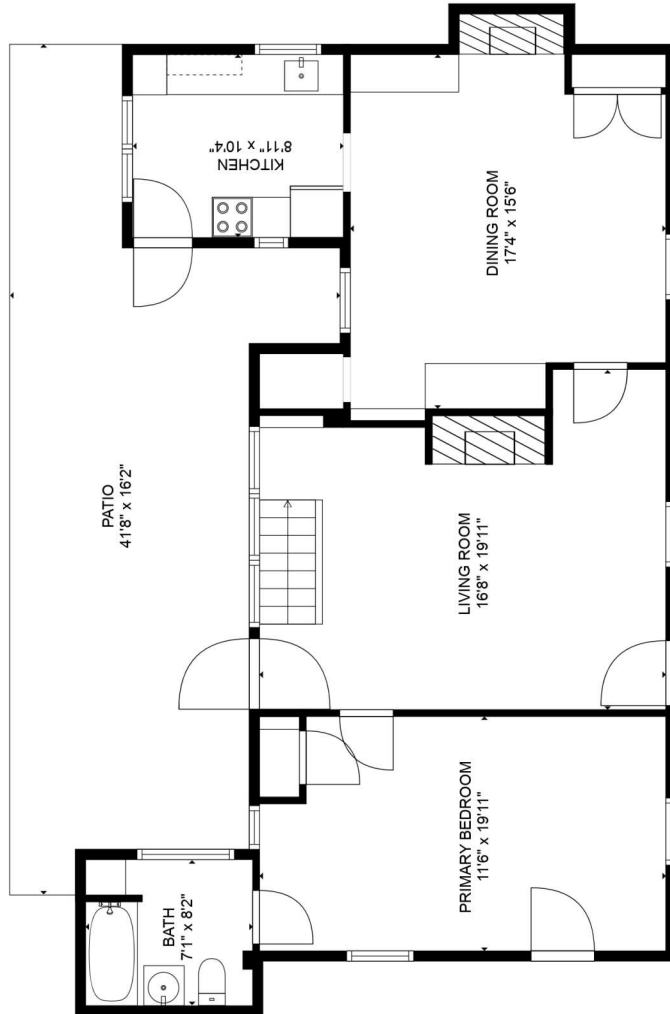
ATTIC
25'8" x 15'7"



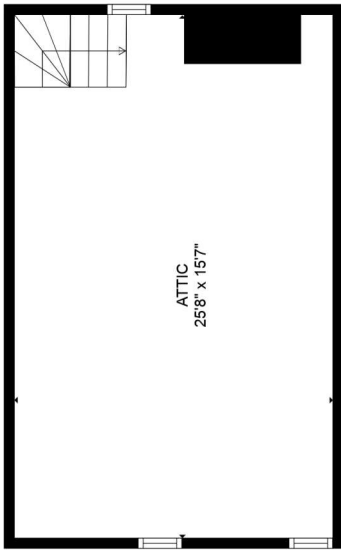
TOTAL: 1781 sq. ft
FLOOR 1: 970 sq. ft, FLOOR 2: 811 sq. ft, FLOOR 3: 0 sq. ft
EXCLUDED AREAS: PATIO: 430 sq. ft, FIREPLACE: 12 sq. ft, LOW CEILING: 78 sq. ft,
ATTIC: 323 sq. ft

SIZE AND DIMENSIONS ARE APPROXIMATE, ACTUAL MAY VARY.

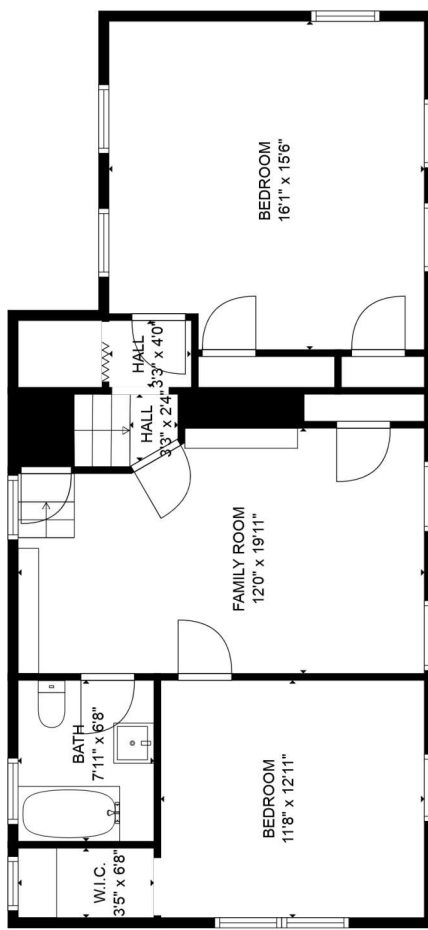




FLOOR 1



FLOOR 3



FLOOR 2



TOTAL: 1781 sq. ft
 FLOOR 1: 970 sq. ft, FLOOR 2: 811 sq. ft, FLOOR 3: 0 sq. ft
 EXCLUDED AREAS: PATIO: 430 sq. ft, FIREPLACE: 12 sq. ft, LOW CEILING: 78 sq. ft,
 ATTIC: 323 sq. ft

SIZE AND DIMENSIONS ARE APPROXIMATE, ACTUAL MAY VARY.

