

Home report

27 Black Spruce Court, Greece, Monroe County, New York,
United States, 14616



Total Area: 3107 sq. ft
Below Ground: 593 sq. ft, Floor 2: 1396 sq. ft, Floor 3: 1118 sq. ft
Excluded: Basement 515 sq. ft, Garage 676 sq. ft, Fireplace 8 sq. ft, Walls: 270 sq. ft

Property summary

 **3** Floors

 **4** Bedrooms

 **2** Bathrooms

Home report

**27 Black Spruce Court, Greece, Monroe County, New York,
United States, 14616**



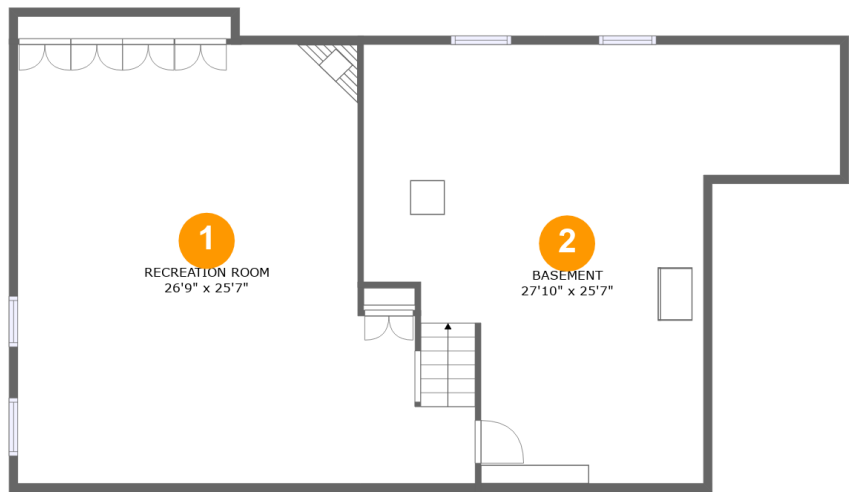
1
Half baths



1
Garages

Home report

27 Black Spruce Court, Greece, Monroe County, New York,
United States, 14616



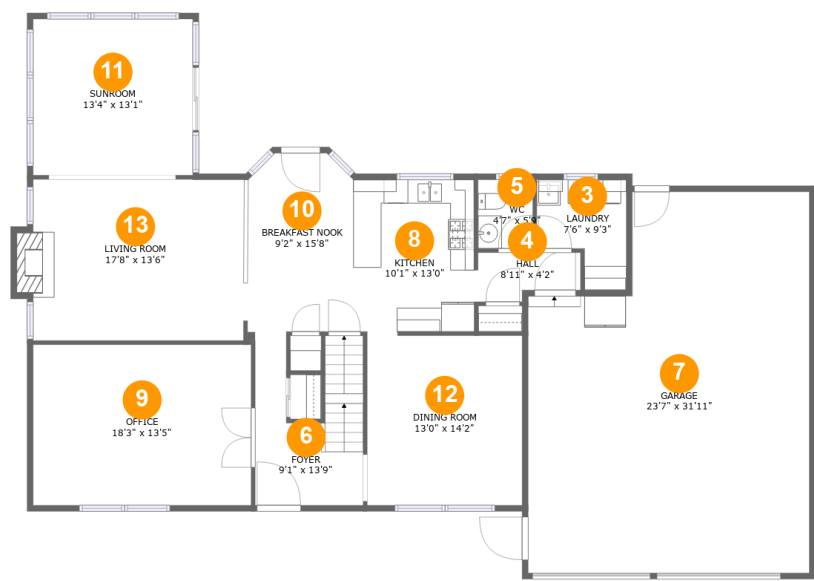
Room dimensions

Floor 1 Below ground Total:593sqft Excluded: 515sqft

#		Max Dimensions	sqft	Included
1	Recreation Room	26'9" x 25'7"	558 sq. ft	Yes
2	Basement	27'10" x 25'7"	513 sq. ft	No

Home report

27 Black Spruce Court, Greece, Monroe County, New York,
United States, 14616



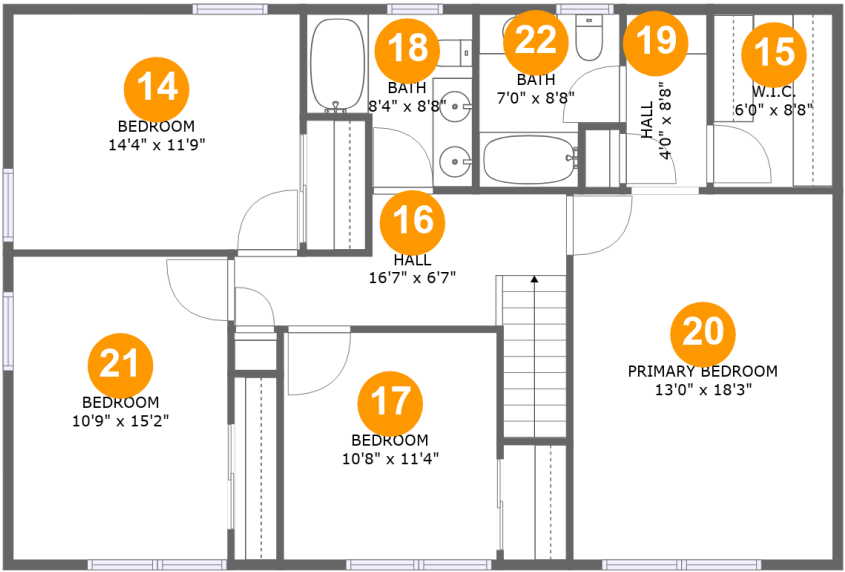
Room dimensions

Floor 2 Total:1396sqft Excluded: 684sqft

#		Max Dimensions	sqft	Included
3	Laundry	7'6" x 9'3"	55 sq. ft	Yes
4	Hall	8'11" x 4'2"	32 sq. ft	Yes
5	WC	4'7" x 5'9"	26 sq. ft	Yes
6	Foyer	9'1" x 13'9"	104 sq. ft	Yes
7	Garage	23'7" x 31'11"	676 sq. ft	No
8	Kitchen	10'1" x 13'0"	129 sq. ft	Yes
9	Office	18'3" x 13'5"	246 sq. ft	Yes
10	Breakfast Nook	9'2" x 15'8"	134 sq. ft	Yes
11	Sunroom	13'4" x 13'1"	175 sq. ft	Yes
12	Dining Room	13'0" x 14'2"	184 sq. ft	Yes
13	Living Room	17'8" x 13'6"	245 sq. ft	Yes

Home report

27 Black Spruce Court, Greece, Monroe County, New York,
United States, 14616



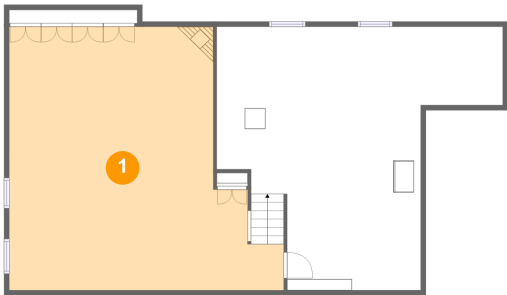
Room dimensions

Floor 3 Total:1118sqft Excluded: 0sqft

#		Max Dimensions	sqft	Included
14	Bedroom	14'4" x 11'9"	169 sq. ft	Yes
15	W.I.C.	6'0" x 8'8"	52 sq. ft	Yes
16	Hall	16'7" x 6'7"	106 sq. ft	Yes
17	Bedroom	10'8" x 11'4"	121 sq. ft	Yes
18	Bath	8'4" x 8'8"	60 sq. ft	Yes
19	Hall	4'0" x 8'8"	35 sq. ft	Yes
20	Primary Bedroom	13'0" x 18'3"	237 sq. ft	Yes
21	Bedroom	10'9" x 15'2"	163 sq. ft	Yes
22	Bath	7'0" x 8'8"	54 sq. ft	Yes

27 Black Spruce Court, Greece, Monroe County, New York,
United States, 14616

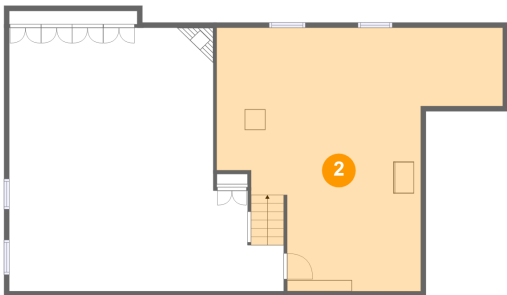
1 Floor 1 - Recreation Room



Max Dimensions: 26'9" x 25'7"
Calculated Area: 558 sq. ft
Included: Yes

Heated: Yes
Finished: Yes
Enclosed: Yes
Contiguous: Yes
Permitted: Yes
Wet space: No
Addition: No
Conversion: No

2 Floor 1 - Basement

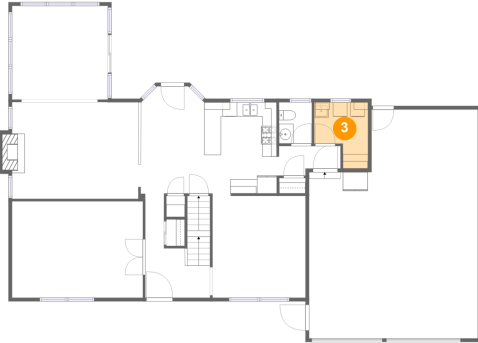


Max Dimensions: 27'10" x 25'7"
Calculated Area: 513 sq. ft
Included: No

Heated: Yes
Finished: No
Enclosed: Yes
Contiguous: Yes
Permitted: Yes
Wet space: No
Addition: No
Conversion: No

27 Black Spruce Court, Greece, Monroe County, New York,
United States, 14616

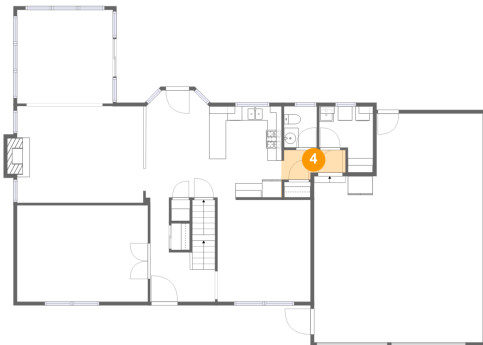
3 Floor 2 - Laundry



Max Dimensions: 7'6" x 9'3"
Calculated Area: 55 sq. ft
Included: Yes

Heated: Yes
Finished: Yes
Enclosed: Yes
Contiguous: Yes
Permitted: Yes
Wet space: No
Addition: No
Conversion: No

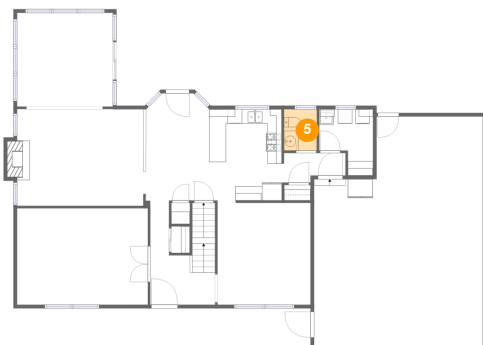
4 Floor 2 - Hall



Max Dimensions: 8'11" x 4'2"
Calculated Area: 32 sq. ft
Included: Yes

Heated: Yes
Finished: Yes
Enclosed: Yes
Contiguous: Yes
Permitted: Yes
Wet space: No
Addition: No
Conversion: No

5 Floor 2 - WC

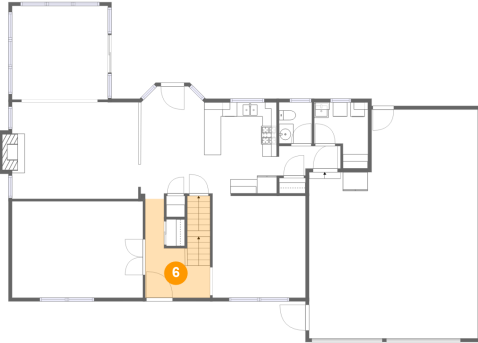


Max Dimensions: 4'7" x 5'9"
Calculated Area: 26 sq. ft
Included: Yes

Heated: Yes
Finished: Yes
Enclosed: Yes
Contiguous: Yes
Permitted: Yes
Wet space: Yes
Addition: No
Conversion: No

27 Black Spruce Court, Greece, Monroe County, New York,
United States, 14616

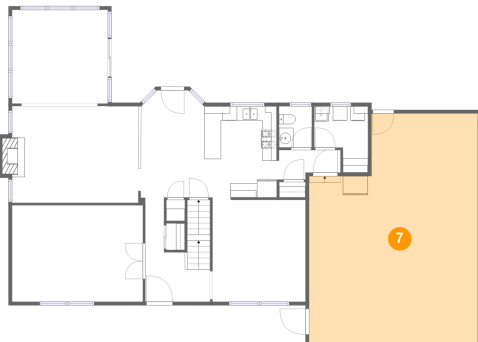
6 Floor 2 - Foyer



Max Dimensions: 9'1" x 13'9"
Calculated Area: 104 sq. ft
Included: Yes

Heated: Yes
Finished: Yes
Enclosed: Yes
Contiguous: Yes
Permitted: Yes
Wet space: No
Addition: No
Conversion: No

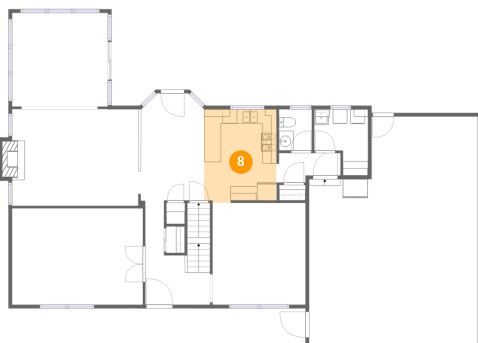
7 Floor 2 - Garage



Max Dimensions: 23'7" x 31'11"
Calculated Area: 676 sq. ft
Included: No

Heated: No
Finished: No
Enclosed: Yes
Contiguous: Yes
Permitted: Yes
Wet space: No
Addition: No
Conversion: No

8 Floor 2 - Kitchen

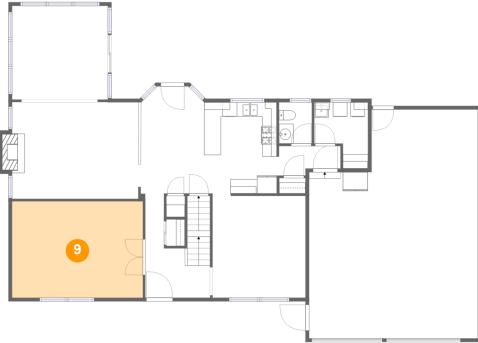


Max Dimensions: 10'1" x 13'0"
Calculated Area: 129 sq. ft
Included: Yes

Heated: Yes
Finished: Yes
Enclosed: Yes
Contiguous: Yes
Permitted: Yes
Wet space: No
Addition: No
Conversion: No

27 Black Spruce Court, Greece, Monroe County, New York,
United States, 14616

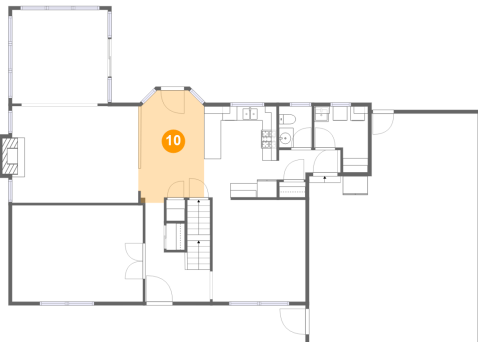
9 Floor 2 - Office



Max Dimensions: 18'3" x 13'5"
Calculated Area: 246 sq. ft
Included: Yes

Heated: Yes
Finished: Yes
Enclosed: Yes
Contiguous: Yes
Permitted: Yes
Wet space: No
Addition: No
Conversion: No

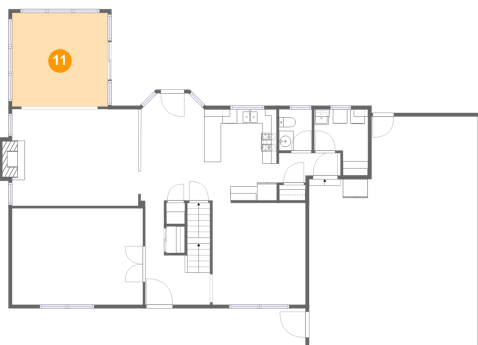
10 Floor 2 - Breakfast Nook



Max Dimensions: 9'2" x 15'8"
Calculated Area: 134 sq. ft
Included: Yes

Heated: Yes
Finished: Yes
Enclosed: Yes
Contiguous: Yes
Permitted: Yes
Wet space: No
Addition: No
Conversion: No

11 Floor 2 - Sunroom

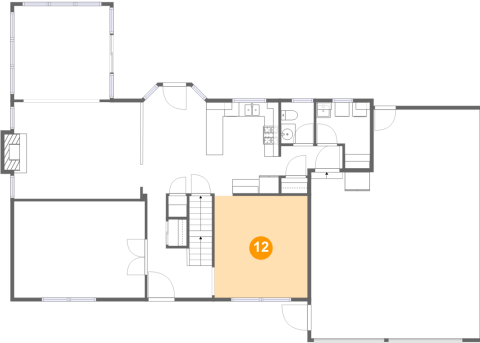


Max Dimensions: 13'4" x 13'1"
Calculated Area: 175 sq. ft
Included: Yes

Heated: Yes
Finished: Yes
Enclosed: Yes
Contiguous: Yes
Permitted: Yes
Wet space: No
Addition: No
Conversion: No

27 Black Spruce Court, Greece, Monroe County, New York,
United States, 14616

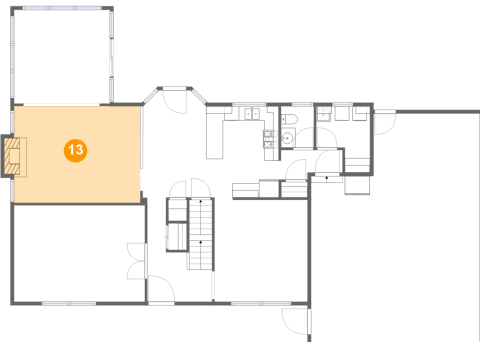
12 Floor 2 - Dining Room



Max Dimensions: 13'0" x 14'2"
Calculated Area: 184 sq. ft
Included: Yes

Heated: Yes
Finished: Yes
Enclosed: Yes
Contiguous: Yes
Permitted: Yes
Wet space: No
Addition: No
Conversion: No

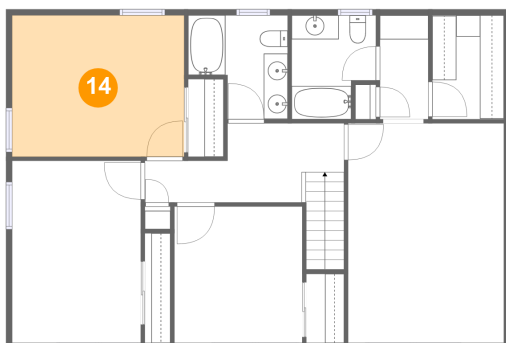
13 Floor 2 - Living Room



Max Dimensions: 17'8" x 13'6"
Calculated Area: 245 sq. ft
Included: Yes

Heated: Yes
Finished: Yes
Enclosed: Yes
Contiguous: Yes
Permitted: Yes
Wet space: No
Addition: No
Conversion: No

14 Floor 3 - Bedroom

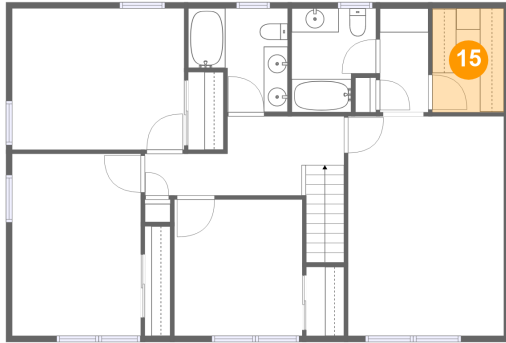


Max Dimensions: 14'4" x 11'9"
Calculated Area: 169 sq. ft
Included: Yes

Heated: Yes
Finished: Yes
Enclosed: Yes
Contiguous: Yes
Permitted: Yes
Wet space: No
Addition: No
Conversion: No

27 Black Spruce Court, Greece, Monroe County, New York,
United States, 14616

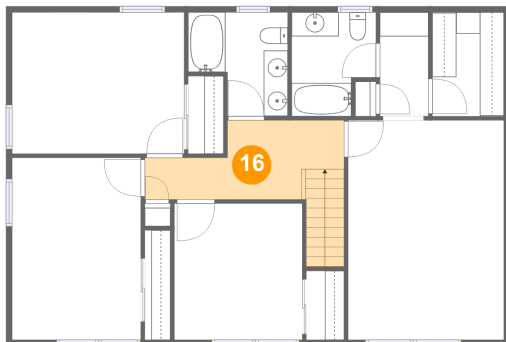
15 Floor 3 - W.I.C.



Max Dimensions: 6'0" x 8'8"
Calculated Area: 52 sq. ft
Included: Yes

Heated: Yes
Finished: Yes
Enclosed: Yes
Contiguous: Yes
Permitted: Yes
Wet space: No
Addition: No
Conversion: No

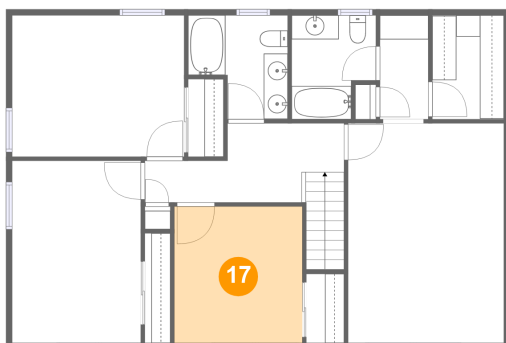
16 Floor 3 - Hall



Max Dimensions: 16'7" x 6'7"
Calculated Area: 106 sq. ft
Included: Yes

Heated: Yes
Finished: Yes
Enclosed: Yes
Contiguous: Yes
Permitted: Yes
Wet space: No
Addition: No
Conversion: No

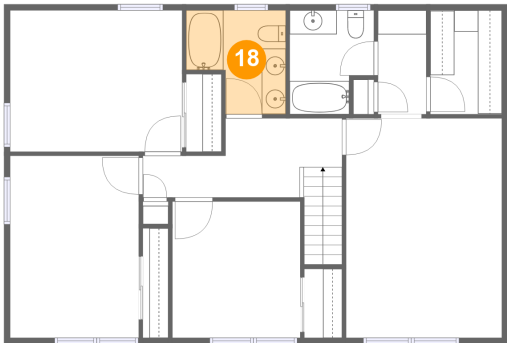
17 Floor 3 - Bedroom



Max Dimensions: 10'8" x 11'4"
Calculated Area: 121 sq. ft
Included: Yes

Heated: Yes
Finished: Yes
Enclosed: Yes
Contiguous: Yes
Permitted: Yes
Wet space: No
Addition: No
Conversion: No

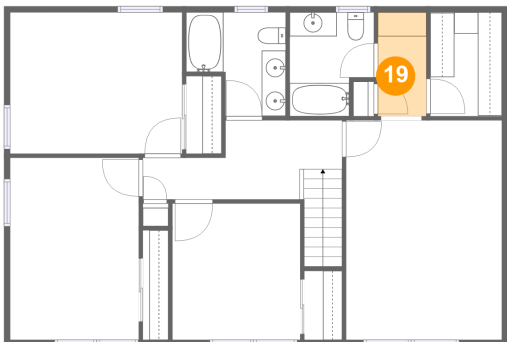
18 Floor 3 - Bath



Max Dimensions: 8'4" x 8'8"
Calculated Area: 60 sq. ft
Included: Yes

Heated: Yes
Finished: Yes
Enclosed: Yes
Contiguous: Yes
Permitted: Yes
Wet space: Yes
Addition: No
Conversion: No

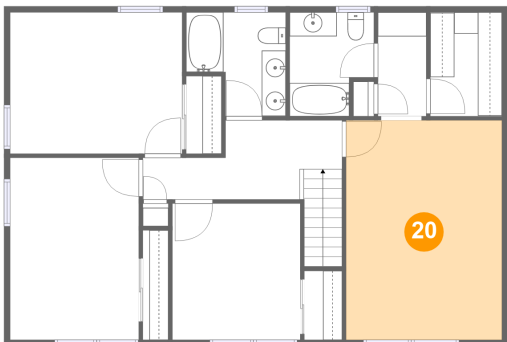
19 Floor 3 - Hall



Max Dimensions: 4'0" x 8'8"
Calculated Area: 35 sq. ft
Included: Yes

Heated: Yes
Finished: Yes
Enclosed: Yes
Contiguous: Yes
Permitted: Yes
Wet space: No
Addition: No
Conversion: No

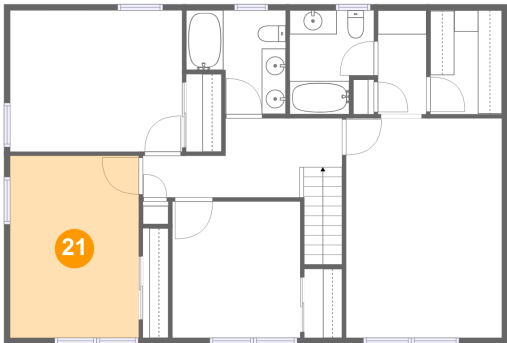
20 Floor 3 - Primary Bedroom



Max Dimensions: 13'0" x 18'3"
Calculated Area: 237 sq. ft
Included: Yes

Heated: Yes
Finished: Yes
Enclosed: Yes
Contiguous: Yes
Permitted: Yes
Wet space: No
Addition: No
Conversion: No

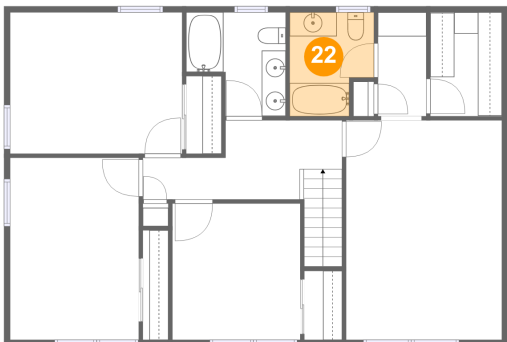
21 Floor 3 - Bedroom



Max Dimensions: 10'9" x 15'2"
Calculated Area: 163 sq. ft
Included: Yes

Heated: Yes
Finished: Yes
Enclosed: Yes
Contiguous: Yes
Permitted: Yes
Wet space: No
Addition: No
Conversion: No

22 Floor 3 - Bath



Max Dimensions: 7'0" x 8'8"
Calculated Area: 54 sq. ft
Included: Yes

Heated: Yes
Finished: Yes
Enclosed: Yes
Contiguous: Yes
Permitted: Yes
Wet space: Yes
Addition: No
Conversion: No