


Home report


4816 Colonial Avenue, Eton Hill, Cave Spring, Roanoke, Roanoke County, Virginia, United States, 24018




Property summary




0
Garages



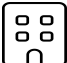
4
Bedrooms




3
Bathrooms




0
Half baths



3
Floors



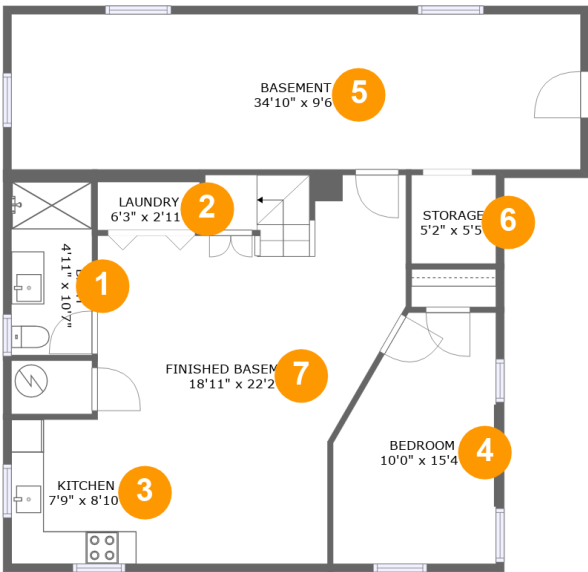
2,769
Gross living
area sqft



3,862
Total sqft

Home report

4816 Colonial Avenue, Eton Hill, Cave Spring, Roanoke, Roanoke County, Virginia, United States, 24018



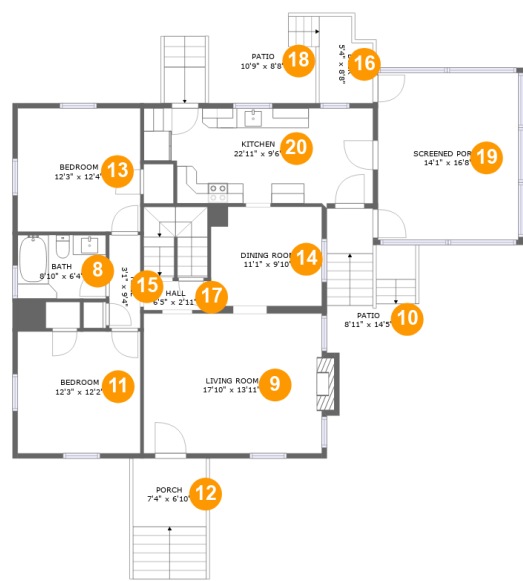
Room dimensions

Floor 1 Total sqft: 1118 Living area: 1069

#		Max Dimensions	sqft	Included
1	Bath	4'11" x 10'7"	52 sq. ft	Yes
2	Laundry	6'3" x 2'11"	18 sq. ft	Yes
3	Kitchen	7'9" x 8'10"	68 sq. ft	Yes
4	Bedroom	10'0" x 15'4"	135 sq. ft	Yes
5	Basement	34'10" x 9'6"	332 sq. ft	Yes
6	Storage	5'2" x 5'5"	28 sq. ft	No
7	Finished Basement	18'11" x 22'2"	346 sq. ft	Yes

Home report

4816 Colonial Avenue, Eton Hill, Cave Spring, Roanoke, Roanoke County, Virginia, United States, 24018



Room dimensions

Floor 2

Total sqft: 1732

Living area: 1168

#		Max Dimensions	sqft	Included
8	Bath	8'10" x 6'4"	56 sq. ft	Yes
9	Living Room	17'10" x 13'11"	255 sq. ft	Yes
10	Patio	8'11" x 14'5"	110 sq. ft	No
11	Bedroom	12'3" x 12'2"	149 sq. ft	Yes
12	Porch	7'4" x 6'10"	50 sq. ft	No
13	Bedroom	12'3" x 12'4"	151 sq. ft	Yes
14	Dining Room	11'1" x 9'10"	110 sq. ft	Yes
15	Hall	3'1" x 9'4"	29 sq. ft	Yes
16	Deck	5'4" x 8'8"	41 sq. ft	No
17	Hall	6'5" x 2'11"	19 sq. ft	Yes
18	Patio	10'9" x 8'8"	94 sq. ft	No

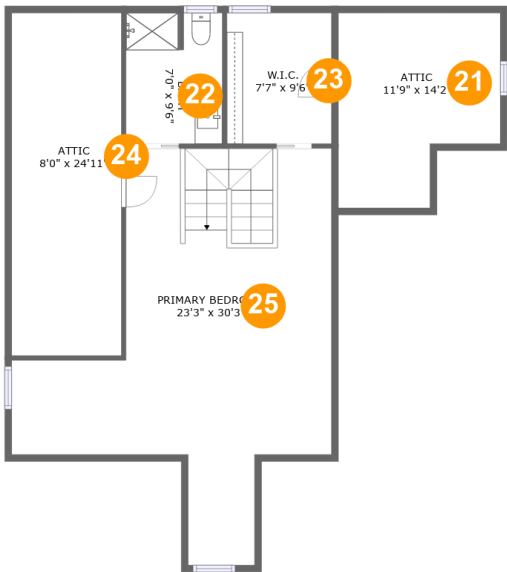
Home report

4816 Colonial Avenue, Eton Hill, Cave Spring, Roanoke, Roanoke County, Virginia, United States, 24018

#		Max Dimensions	sqft	Included
19	Screened Porch	14'1" x 16'8"	234 sq. ft	No
20	Kitchen	22'11" x 9'6"	204 sq. ft	Yes

Home report

4816 Colonial Avenue, Eton Hill, Cave Spring, Roanoke, Roanoke County, Virginia, United States, 24018



Room dimensions

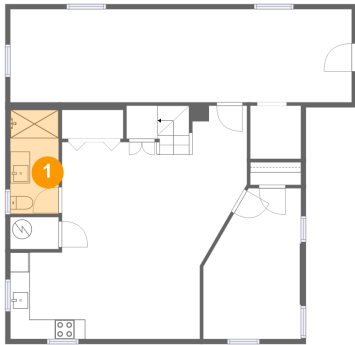
Floor 3

Total sqft: 1012

Living area: 532

#		Max Dimensions	sqft	Included
21	Attic	11'9" x 14'2"	21 sq. ft	No
22	Bath	7'0" x 9'6"	66 sq. ft	Yes
23	W.I.C.	7'7" x 9'6"	72 sq. ft	Yes
24	Attic	8'0" x 24'11"	46 sq. ft	No
25	Primary Bedroom	23'3" x 30'3"	348 sq. ft	Yes

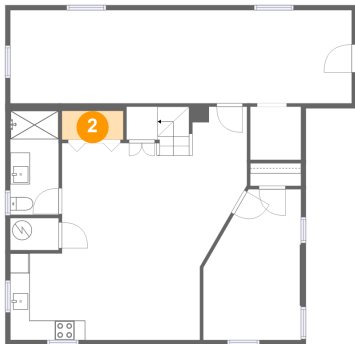
1 Floor 1 - Bath



Max Dimensions: 4'11" x 10'7"
Calculated Area: 52 sq. ft
Included: Yes

Heated: Yes
Finished: Yes
Enclosed: Yes
Contiguous: Yes
Permitted: Yes
Wet space: Yes
Addition: No
Conversion: No

2 Floor 1 - Laundry

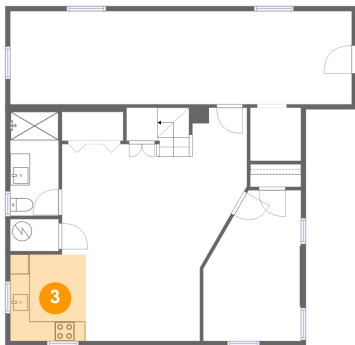


Max Dimensions: 6'3" x 2'11"
Calculated Area: 18 sq. ft
Included: Yes

Heated: Yes
Finished: Yes
Enclosed: Yes
Contiguous: Yes
Permitted: Yes
Wet space: No
Addition: No
Conversion: No

4816 Colonial Avenue, Eton Hill, Cave Spring, Roanoke, Roanoke County, Virginia, United States, 24018

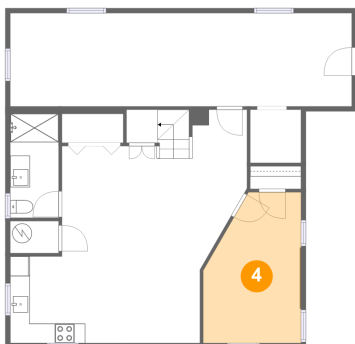
3 Floor 1 - Kitchen



Max Dimensions: 7'9" x 8'10"
Calculated Area: 68 sq. ft
Included: Yes

Heated: Yes
Finished: Yes
Enclosed: Yes
Contiguous: Yes
Permitted: Yes
Wet space: No
Addition: No
Conversion: No

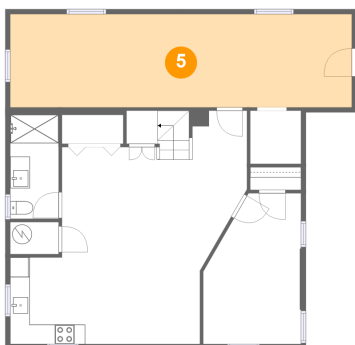
4 Floor 1 - Bedroom



Max Dimensions: 10'0" x 15'4"
Calculated Area: 135 sq. ft
Included: Yes

Heated: Yes
Finished: Yes
Enclosed: Yes
Contiguous: Yes
Permitted: Yes
Wet space: No
Addition: No
Conversion: No

5 Floor 1 - Basement

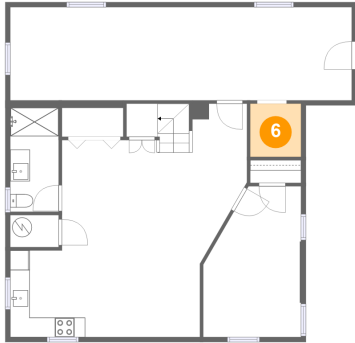


Max Dimensions: 34'10" x 9'6"
Calculated Area: 332 sq. ft
Included: Yes

Heated: Yes
Finished: Yes
Enclosed: Yes
Contiguous: Yes
Permitted: Yes
Wet space: No
Addition: No
Conversion: No

4816 Colonial Avenue, Eton Hill, Cave Spring, Roanoke, Roanoke County, Virginia, United States, 24018

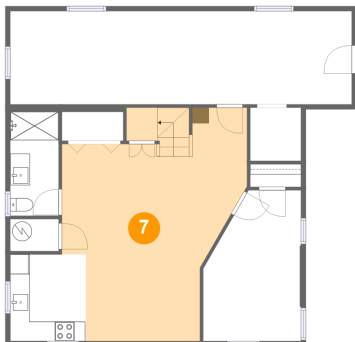
6 Floor 1 - Storage



Max Dimensions: 5'2" x 5'5"
Calculated Area: 28 sq. ft
Included: No

Heated: No
Finished: No
Enclosed: No
Contiguous: No
Permitted: Yes
Wet space: No
Addition: No
Conversion: No

7 Floor 1 - Finished Basement



Max Dimensions: 18'11" x 22'2"
Calculated Area: 346 sq. ft
Included: Yes

Heated: Yes
Finished: Yes
Enclosed: Yes
Contiguous: Yes
Permitted: Yes
Wet space: No
Addition: No
Conversion: No

8 Floor 2 - Bath



Max Dimensions: 8'10" x 6'4"
Calculated Area: 56 sq. ft
Included: Yes

Heated: Yes
Finished: Yes
Enclosed: Yes
Contiguous: Yes
Permitted: Yes
Wet space: Yes
Addition: No
Conversion: No

9 Floor 2 - Living Room



Max Dimensions: 17'10" x 13'11"
Calculated Area: 255 sq. ft
Included: Yes

Heated: Yes
Finished: Yes
Enclosed: Yes
Contiguous: Yes
Permitted: Yes
Wet space: No
Addition: No
Conversion: No

10 Floor 2 - Patio



Max Dimensions: 8'11" x 14'5"
Calculated Area: 110 sq. ft
Included: No

Heated: No
Finished: Yes
Enclosed: No
Contiguous: Yes
Permitted: Yes
Wet space: No
Addition: No
Conversion: No

11 Floor 2 - Bedroom



Max Dimensions: 12'3" x 12'2"
Calculated Area: 149 sq. ft
Included: Yes

Heated: Yes
Finished: Yes
Enclosed: Yes
Contiguous: Yes
Permitted: Yes
Wet space: No
Addition: No
Conversion: No

12 Floor 2 - Porch



Max Dimensions: 7'4" x 6'10"
Calculated Area: 50 sq. ft
Included: No

Heated: No
Finished: Yes
Enclosed: No
Contiguous: Yes
Permitted: Yes
Wet space: No
Addition: No
Conversion: No

13 Floor 2 - Bedroom



Max Dimensions: 12'3" x 12'4"
Calculated Area: 151 sq. ft
Included: Yes

Heated: Yes
Finished: Yes
Enclosed: Yes
Contiguous: Yes
Permitted: Yes
Wet space: No
Addition: No
Conversion: No

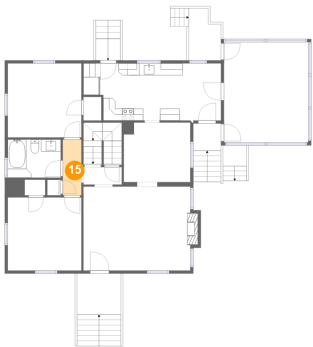
14 Floor 2 - Dining Room



Max Dimensions: 11'1" x 9'10"
Calculated Area: 110 sq. ft
Included: Yes

Heated: Yes
Finished: Yes
Enclosed: Yes
Contiguous: Yes
Permitted: Yes
Wet space: No
Addition: No
Conversion: No

15 Floor 2 - Hall



Max Dimensions: 3'1" x 9'4"
Calculated Area: 29 sq. ft
Included: Yes

Heated: Yes
Finished: Yes
Enclosed: Yes
Contiguous: Yes
Permitted: Yes
Wet space: No
Addition: No
Conversion: No

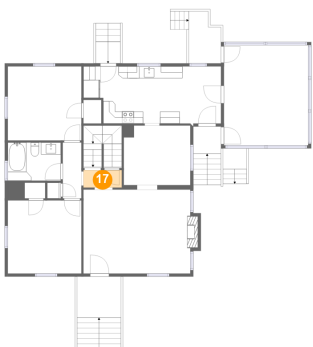
16 Floor 2 - Deck



Max Dimensions: 5'4" x 8'8"
Calculated Area: 41 sq. ft
Included: No

Heated: No
Finished: Yes
Enclosed: No
Contiguous: Yes
Permitted: Yes
Wet space: No
Addition: No
Conversion: No

17 Floor 2 - Hall



Max Dimensions: 6'5" x 2'11"
Calculated Area: 19 sq. ft
Included: Yes

Heated: Yes
Finished: Yes
Enclosed: Yes
Contiguous: Yes
Permitted: Yes
Wet space: No
Addition: No
Conversion: No

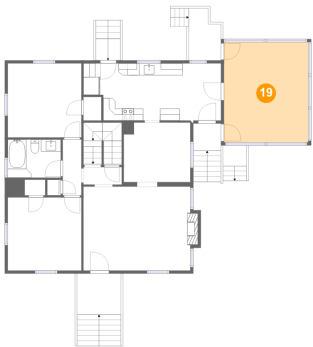
18 Floor 2 - Patio



Max Dimensions: 10'9" x 8'8"
Calculated Area: 94 sq. ft
Included: No

Heated: No
Finished: Yes
Enclosed: No
Contiguous: Yes
Permitted: Yes
Wet space: No
Addition: No
Conversion: No

19 Floor 2 - Screened Porch



Max Dimensions: 14'1" x 16'8"
Calculated Area: 234 sq. ft
Included: No

Heated: No
Finished: Yes
Enclosed: No
Contiguous: Yes
Permitted: Yes
Wet space: No
Addition: No
Conversion: No

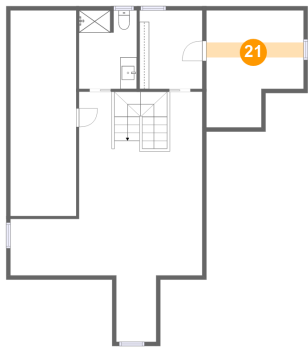
20 Floor 2 - Kitchen



Max Dimensions: 22'11" x 9'6"
Calculated Area: 204 sq. ft
Included: Yes

Heated: Yes
Finished: Yes
Enclosed: Yes
Contiguous: Yes
Permitted: Yes
Wet space: No
Addition: No
Conversion: No

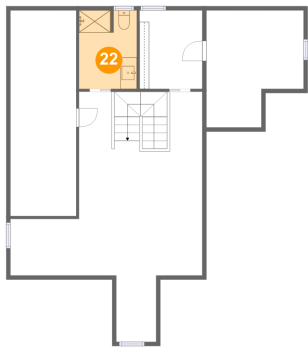
21 Floor 3 - Attic



Max Dimensions: 11'9" x 14'2"
Calculated Area: 21 sq. ft
Included: No

Heated: No
Finished: No
Enclosed: Yes
Contiguous: Yes
Permitted: Yes
Wet space: No
Addition: No
Conversion: No

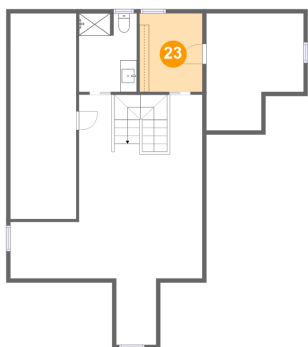
22 Floor 3 - Bath



Max Dimensions: 7'0" x 9'6"
Calculated Area: 66 sq. ft
Included: Yes

Heated: Yes
Finished: Yes
Enclosed: Yes
Contiguous: Yes
Permitted: Yes
Wet space: Yes
Addition: No
Conversion: No

23 Floor 3 - W.I.C.

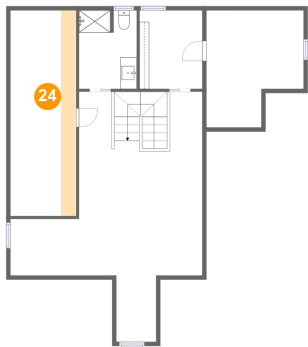


Max Dimensions: 7'7" x 9'6"
Calculated Area: 72 sq. ft
Included: Yes

Heated: Yes
Finished: Yes
Enclosed: Yes
Contiguous: Yes
Permitted: Yes
Wet space: No
Addition: No
Conversion: No

4816 Colonial Avenue, Eton Hill, Cave Spring, Roanoke, Roanoke County, Virginia, United States, 24018

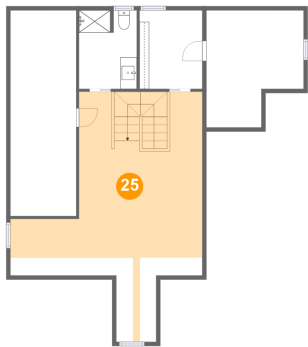
24 Floor 3 - Attic



Max Dimensions: 8'0" x 24'11"
Calculated Area: 46 sq. ft
Included: No

Heated: No
Finished: No
Enclosed: Yes
Contiguous: Yes
Permitted: Yes
Wet space: No
Addition: No
Conversion: No

25 Floor 3 - Primary Bedroom



Max Dimensions: 23'3" x 30'3"
Calculated Area: 348 sq. ft
Included: Yes

Heated: Yes
Finished: Yes
Enclosed: Yes
Contiguous: Yes
Permitted: Yes
Wet space: No
Addition: No
Conversion: No