




4286 Piland Park Cv, Pleasant Hill, Olive Branch,
DeSoto County, Mississippi, United States, 38654




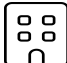
Property summary


 **1** Garages


 **4** Bedrooms

 **3** Bathrooms

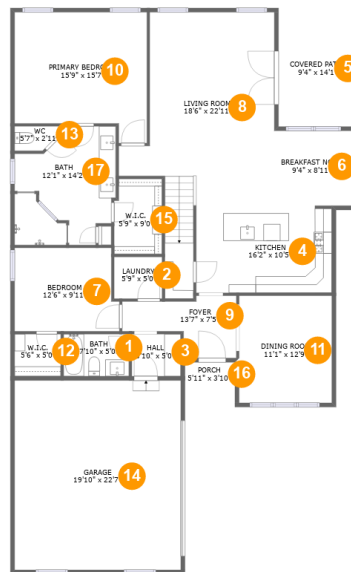
 **0** Half baths

 **2** Floors

 **2,784** Gross living area sqft

 **4,177** Total sqft

4286 Piland Park Cv, Pleasant Hill, Olive Branch, DeSoto County, Mississippi, United States, 38654



Room dimensions

Floor 1

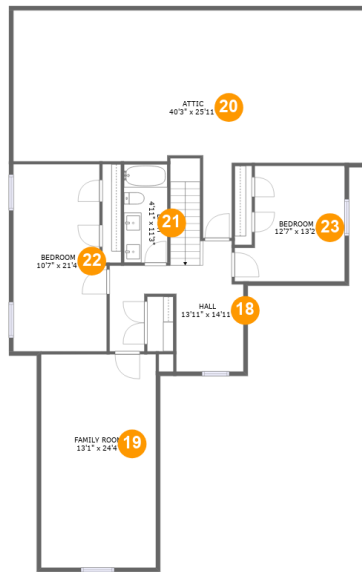
Total sqft: 2306 Living area: 1674

#		Dimensions	sqft	Counted as living area
1	Bath	7'10" x 5'0"	39 sq. ft	Yes
2	Laundry	5'9" x 5'0"	28 sq. ft	Yes
3	Hall	5'10" x 5'0"	29 sq. ft	Yes
4	Kitchen	16'2" x 10'5"	167 sq. ft	Yes
5	Covered Patio	9'4" x 14'1"	132 sq. ft	No
6	Breakfast Nook	9'4" x 8'11"	84 sq. ft	Yes
7	Bedroom	12'6" x 9'11"	118 sq. ft	Yes
8	Living Room	18'6" x 22'11"	364 sq. ft	Yes
9	Foyer	13'7" x 7'5"	72 sq. ft	Yes
10	Primary Bedroom	15'9" x 15'7"	217 sq. ft	Yes
11	Dining Room	11'1" x 12'9"	141 sq. ft	Yes

**4286 Piland Park Cv, Pleasant Hill, Olive Branch,
DeSoto County, Mississippi, United States, 38654**

#		Dimensions	sqft	Counted as living area
12	W.I.C.	5'6" x 5'0"	28 sq. ft	Yes
13	WC	5'7" x 2'11"	14 sq. ft	Yes
14	Garage	19'10" x 22'7"	447 sq. ft	No
15	W.I.C.	5'9" x 9'0"	50 sq. ft	Yes
16	Porch	5'11" x 3'10"	20 sq. ft	No
17	Bath	12'1" x 14'2"	146 sq. ft	Yes

**4286 Piland Park Cv, Pleasant Hill, Olive Branch,
DeSoto County, Mississippi, United States, 38654**



Room dimensions

Floor 2

Total sqft: 1871 Living area: 1110

#		Dimensions	sqft	Counted as living area
18	Hall	13'11" x 14'11"	193 sq. ft	Yes
19	Family Room	13'1" x 24'4"	319 sq. ft	Yes
20	Attic	40'3" x 25'11"	425 sq. ft	No
21	Bath	4'11" x 11'3"	56 sq. ft	Yes
22	Bedroom	10'7" x 21'4"	218 sq. ft	Yes
23	Bedroom	12'7" x 13'2"	144 sq. ft	Yes

4286 Piland Park Cv, Pleasant Hill, Olive Branch,
DeSoto County, Mississippi, United States, 38654

1 Floor 1 - Bath



Dimensions: 7'10" x 5'0"
Area: 39 sq. ft
Counted as living area: Yes

Heated: Yes
Finished: Yes
Enclosed: Yes
Contiguous: Yes
Permitted: Yes
Wet space: Yes
Addition: No
Conversion: No

2 Floor 1 - Laundry

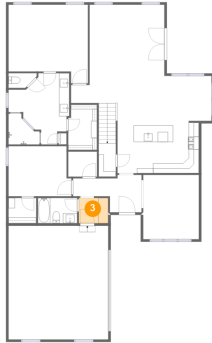


Dimensions: 5'9" x 5'0"
Area: 28 sq. ft
Counted as living area: Yes

Heated: Yes
Finished: Yes
Enclosed: Yes
Contiguous: Yes
Permitted: Yes
Wet space: No
Addition: No
Conversion: No

4286 Piland Park Cv, Pleasant Hill, Olive Branch,
DeSoto County, Mississippi, United States, 38654

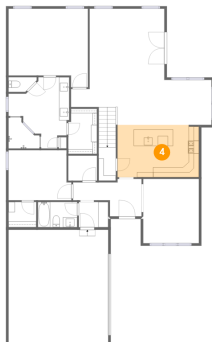
3 Floor 1 - Hall



Dimensions: 5'10" x 5'0"
Area: 29 sq. ft
Counted as living area: Yes

Heated: Yes
Finished: Yes
Enclosed: Yes
Contiguous: Yes
Permitted: Yes
Wet space: No
Addition: No
Conversion: No

4 Floor 1 - Kitchen



Dimensions: 16'2" x 10'5"
Area: 167 sq. ft
Counted as living area: Yes

Heated: Yes
Finished: Yes
Enclosed: Yes
Contiguous: Yes
Permitted: Yes
Wet space: No
Addition: No
Conversion: No

5 Floor 1 - Covered Patio

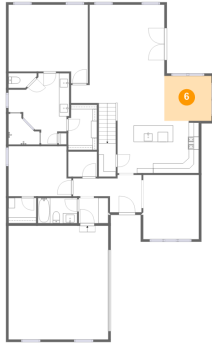


Dimensions: 9'4" x 14'1"
Area: 132 sq. ft
Counted as living area: No

Heated: No
Finished: Yes
Enclosed: No
Contiguous: Yes
Permitted: Yes
Wet space: No
Addition: No
Conversion: No

4286 Piland Park Cv, Pleasant Hill, Olive Branch,
DeSoto County, Mississippi, United States, 38654

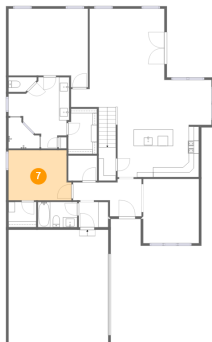
6 Floor 1 - Breakfast Nook



Dimensions: 9'4" x 8'11"
Area: 84 sq. ft
Counted as living area: Yes

Heated: Yes
Finished: Yes
Enclosed: Yes
Contiguous: Yes
Permitted: Yes
Wet space: No
Addition: No
Conversion: No

7 Floor 1 - Bedroom



Dimensions: 12'6" x 9'11"
Area: 118 sq. ft
Counted as living area: Yes

Heated: Yes
Finished: Yes
Enclosed: Yes
Contiguous: Yes
Permitted: Yes
Wet space: No
Addition: No
Conversion: No

8 Floor 1 - Living Room

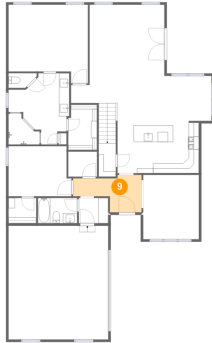


Dimensions: 18'6" x 22'11"
Area: 364 sq. ft
Counted as living area: Yes

Heated: Yes
Finished: Yes
Enclosed: Yes
Contiguous: Yes
Permitted: Yes
Wet space: No
Addition: No
Conversion: No

4286 Piland Park Cv, Pleasant Hill, Olive Branch,
DeSoto County, Mississippi, United States, 38654

9 Floor 1 - Foyer



Dimensions: 13'7" x 7'5"
Area: 72 sq. ft
Counted as living area: Yes

Heated: Yes
Finished: Yes
Enclosed: Yes
Contiguous: Yes
Permitted: Yes
Wet space: No
Addition: No
Conversion: No

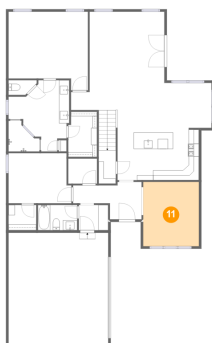
10 Floor 1 - Primary Bedroom



Dimensions: 15'9" x 15'7"
Area: 217 sq. ft
Counted as living area: Yes

Heated: Yes
Finished: Yes
Enclosed: Yes
Contiguous: Yes
Permitted: Yes
Wet space: No
Addition: No
Conversion: No

11 Floor 1 - Dining Room

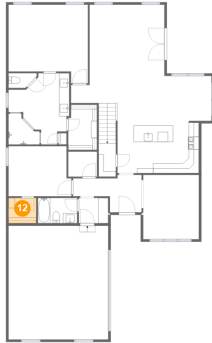


Dimensions: 11'1" x 12'9"
Area: 141 sq. ft
Counted as living area: Yes

Heated: Yes
Finished: Yes
Enclosed: Yes
Contiguous: Yes
Permitted: Yes
Wet space: No
Addition: No
Conversion: No

4286 Piland Park Cv, Pleasant Hill, Olive Branch,
DeSoto County, Mississippi, United States, 38654

12 Floor 1 - W.I.C.



Dimensions: 5'6" x 5'0"
Area: 28 sq. ft
Counted as living area: Yes

Heated: Yes
Finished: Yes
Enclosed: Yes
Contiguous: Yes
Permitted: Yes
Wet space: No
Addition: No
Conversion: No

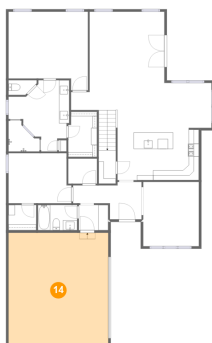
13 Floor 1 - WC



Dimensions: 5'7" x 2'11"
Area: 14 sq. ft
Counted as living area: Yes

Heated: Yes
Finished: Yes
Enclosed: Yes
Contiguous: Yes
Permitted: Yes
Wet space: Yes
Addition: No
Conversion: No

14 Floor 1 - Garage



Dimensions: 19'10" x 22'7"
Area: 447 sq. ft
Counted as living area: No

Heated: No
Finished: No
Enclosed: Yes
Contiguous: Yes
Permitted: Yes
Wet space: No
Addition: No
Conversion: No

**4286 Piland Park Cv, Pleasant Hill, Olive Branch,
DeSoto County, Mississippi, United States, 38654**

15 Floor 1 - W.I.C.



Dimensions: 5'9" x 9'0"
Area: 50 sq. ft
Counted as living area: Yes

Heated: Yes
Finished: Yes
Enclosed: Yes
Contiguous: Yes
Permitted: Yes
Wet space: No
Addition: No
Conversion: No

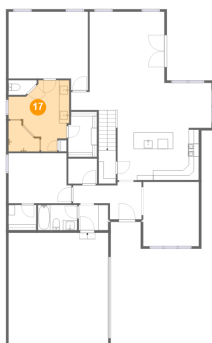
16 Floor 1 - Porch



Dimensions: 5'11" x 3'10"
Area: 20 sq. ft
Counted as living area: No

Heated: No
Finished: Yes
Enclosed: No
Contiguous: Yes
Permitted: Yes
Wet space: No
Addition: No
Conversion: No

17 Floor 1 - Bath

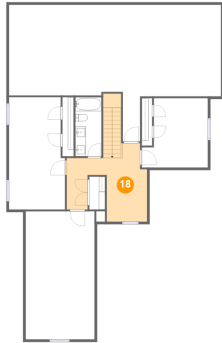


Dimensions: 12'1" x 14'2"
Area: 146 sq. ft
Counted as living area: Yes

Heated: Yes
Finished: Yes
Enclosed: Yes
Contiguous: Yes
Permitted: Yes
Wet space: Yes
Addition: No
Conversion: No

4286 Piland Park Cv, Pleasant Hill, Olive Branch,
DeSoto County, Mississippi, United States, 38654

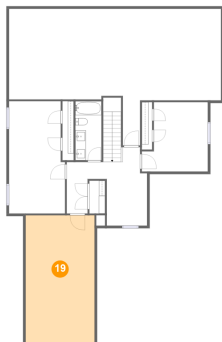
18 Floor 2 - Hall



Dimensions: 13'11" x 14'11"
Area: 193 sq. ft
Counted as living area: Yes

Heated: Yes
Finished: Yes
Enclosed: Yes
Contiguous: Yes
Permitted: Yes
Wet space: No
Addition: No
Conversion: No

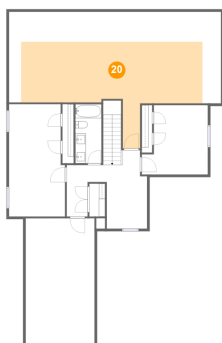
19 Floor 2 - Family Room



Dimensions: 13'1" x 24'4"
Area: 319 sq. ft
Counted as living area: Yes

Heated: Yes
Finished: Yes
Enclosed: Yes
Contiguous: Yes
Permitted: Yes
Wet space: No
Addition: No
Conversion: No

20 Floor 2 - Attic

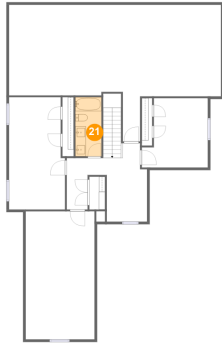


Dimensions: 40'3" x 25'11"
Area: 425 sq. ft
Counted as living area: No

Heated: No
Finished: No
Enclosed: Yes
Contiguous: Yes
Permitted: Yes
Wet space: No
Addition: No
Conversion: No

4286 Piland Park Cv, Pleasant Hill, Olive Branch,
DeSoto County, Mississippi, United States, 38654

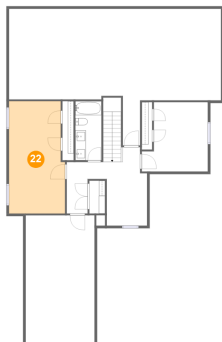
21 Floor 2 - Bath



Dimensions: 4'11" x 11'3"
Area: 56 sq. ft
Counted as living area: Yes

Heated: Yes
Finished: Yes
Enclosed: Yes
Contiguous: Yes
Permitted: Yes
Wet space: Yes
Addition: No
Conversion: No

22 Floor 2 - Bedroom



Dimensions: 10'7" x 21'4"
Area: 218 sq. ft
Counted as living area: Yes

Heated: Yes
Finished: Yes
Enclosed: Yes
Contiguous: Yes
Permitted: Yes
Wet space: No
Addition: No
Conversion: No

23 Floor 2 - Bedroom



Dimensions: 12'7" x 13'2"
Area: 144 sq. ft
Counted as living area: Yes

Heated: Yes
Finished: Yes
Enclosed: Yes
Contiguous: Yes
Permitted: Yes
Wet space: No
Addition: No
Conversion: No