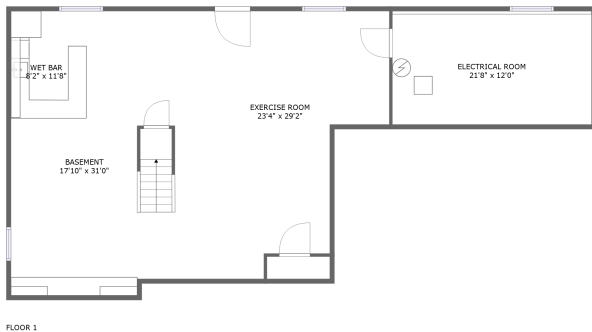
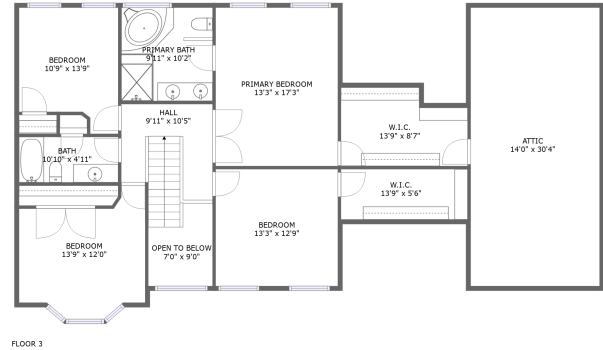
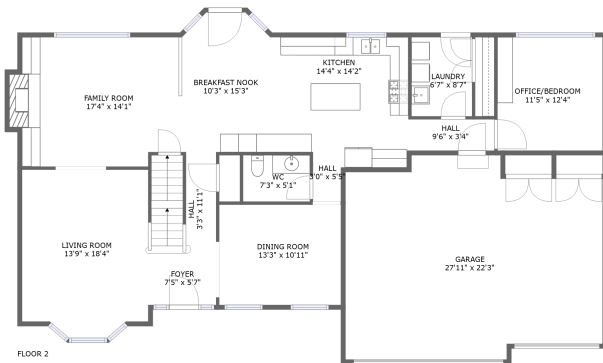



482 Bond Drive, Batavia, Kane County, Illinois, United States, 60510



Property summary


 **1** Garages

 **5** Bedrooms

 **2** Bathrooms

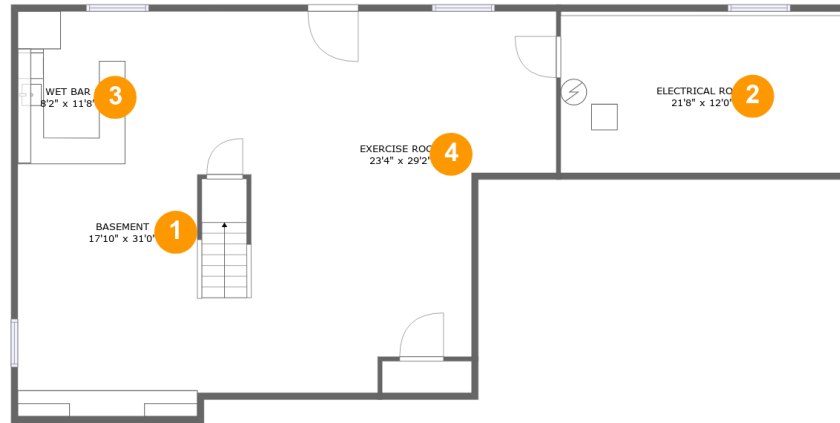
 **1** Half baths

 **3** Floors

 **3,996** Gross living area sqft

 **5,464** Total sqft

482 Bond Drive, Batavia, Kane County, Illinois, United States, 60510



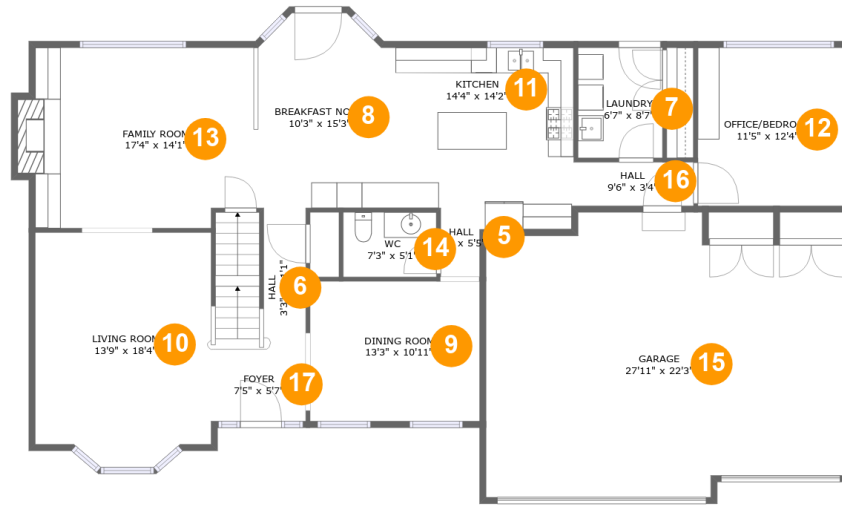
Room dimensions

Floor 1

Total sqft: 1483 Living area: 1166

#		Dimensions	sqft	Counted as living area
1	Basement	17'10" x 31'0"	449 sq. ft	Yes
2	Electrical Room	21'8" x 12'0"	268 sq. ft	No
3	Wet Bar	8'2" x 11'8"	96 sq. ft	Yes
4	Exercise Room	23'4" x 29'2"	552 sq. ft	Yes

482 Bond Drive, Batavia, Kane County, Illinois, United States, 60510



Room dimensions

Floor 2

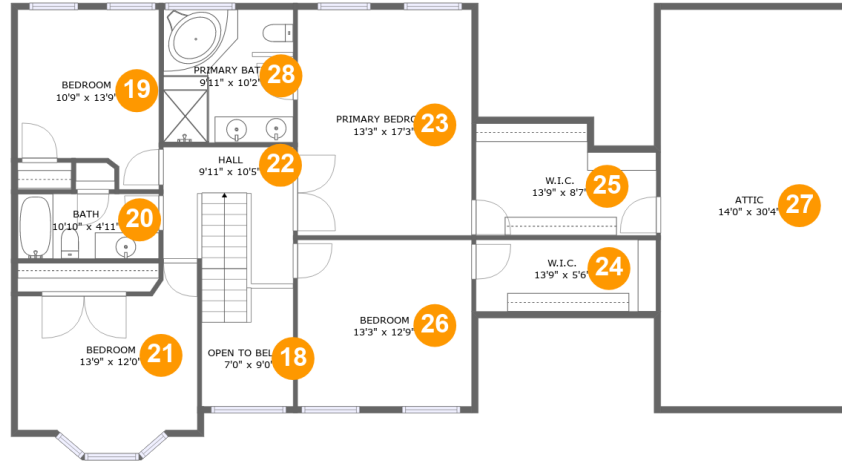
Total sqft: 2157 Living area: 1528

#		Dimensions	sqft	Counted as living area
5	Hall	3'0" x 5'5"	16 sq. ft	Yes
6	Hall	3'3" x 11'1"	75 sq. ft	Yes
7	Laundry	6'7" x 8'7"	57 sq. ft	Yes
8	Breakfast Nook	10'3" x 15'3"	147 sq. ft	Yes
9	Dining Room	13'3" x 10'11"	145 sq. ft	Yes
10	Living Room	13'9" x 18'4"	238 sq. ft	Yes
11	Kitchen	14'4" x 14'2"	192 sq. ft	Yes
12	OFFICE/BEDROOM	11'5" x 12'4"	141 sq. ft	Yes
13	Family Room	17'4" x 14'1"	247 sq. ft	Yes
14	WC	7'3" x 5'1"	37 sq. ft	Yes
15	Garage	27'11" x 22'3"	563 sq. ft	No

482 Bond Drive, Batavia, Kane County, Illinois, United States, 60510

#		Dimensions	sqft	Counted as living area
16	Hall	9'6" x 3'4"	32 sq. ft	Yes
17	Foyer	7'5" x 5'7"	41 sq. ft	Yes

482 Bond Drive, Batavia, Kane County, Illinois, United States, 60510



Room dimensions

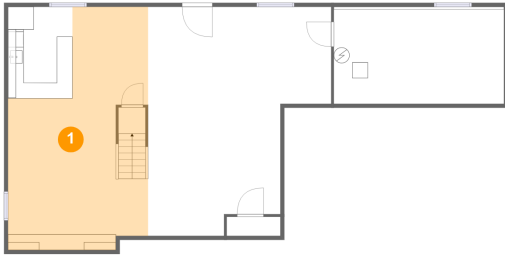
Floor 3

Total sqft: 1824 Living area: 1302

#		Dimensions	sqft	Counted as living area
18	Open To Below	7'0" x 9'0"	53 sq. ft	No
19	Bedroom	10'9" x 13'9"	130 sq. ft	Yes
20	Bath	10'10" x 4'11"	53 sq. ft	Yes
21	Bedroom	13'9" x 12'0"	159 sq. ft	Yes
22	Hall	9'11" x 10'5"	110 sq. ft	Yes
23	Primary Bedroom	13'3" x 17'3"	230 sq. ft	Yes
24	W.I.C.	13'9" x 5'6"	75 sq. ft	Yes
25	W.I.C.	13'9" x 8'7"	106 sq. ft	Yes
26	Bedroom	13'3" x 12'9"	169 sq. ft	Yes
27	Attic	14'0" x 30'4"	190 sq. ft	No
28	Primary Bath	9'11" x 10'2"	101 sq. ft	Yes

482 Bond Drive, Batavia, Kane County, Illinois, United States, 60510

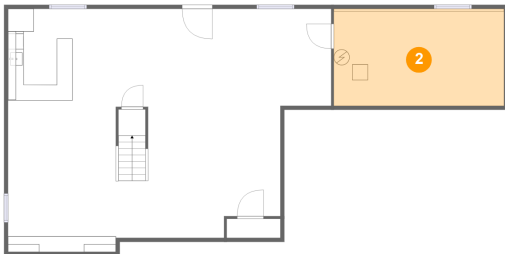
1 Floor 1 - Basement



Dimensions: 17'10" x 31'0"
Area: 449 sq. ft
Counted as living area: Yes

Heated: Yes
Finished: Yes
Enclosed: Yes
Contiguous: Yes
Permitted: Yes
Wet space: No
Addition: No
Conversion: No

2 Floor 1 - Electrical Room

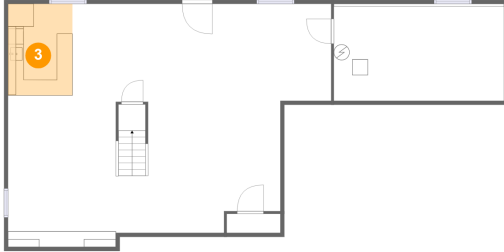


Dimensions: 21'8" x 12'0"
Area: 268 sq. ft
Counted as living area: No

Heated: No
Finished: No
Enclosed: Yes
Contiguous: Yes
Permitted: Yes
Wet space: No
Addition: No
Conversion: No

482 Bond Drive, Batavia, Kane County, Illinois, United States, 60510

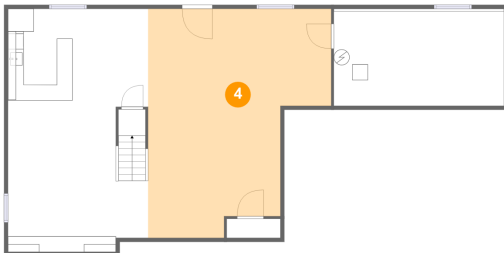
3 Floor 1 - Wet Bar



Dimensions: 8'2" x 11'8"
Area: 96 sq. ft
Counted as living area: Yes

Heated: Yes
Finished: Yes
Enclosed: Yes
Contiguous: Yes
Permitted: Yes
Wet space: No
Addition: No
Conversion: No

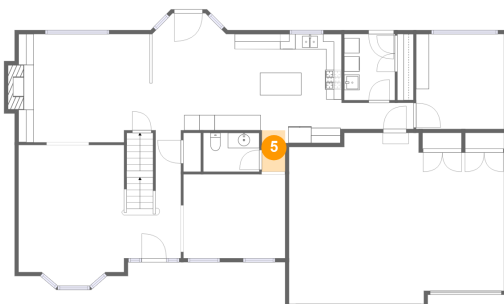
4 Floor 1 - Exercise Room



Dimensions: 23'4" x 29'2"
Area: 552 sq. ft
Counted as living area: Yes

Heated: Yes
Finished: Yes
Enclosed: Yes
Contiguous: Yes
Permitted: Yes
Wet space: No
Addition: No
Conversion: No

5 Floor 2 - Hall

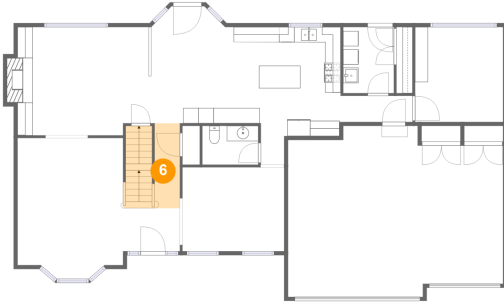


Dimensions: 3'0" x 5'5"
Area: 16 sq. ft
Counted as living area: Yes

Heated: Yes
Finished: Yes
Enclosed: Yes
Contiguous: Yes
Permitted: Yes
Wet space: No
Addition: No
Conversion: No

482 Bond Drive, Batavia, Kane County, Illinois, United States, 60510

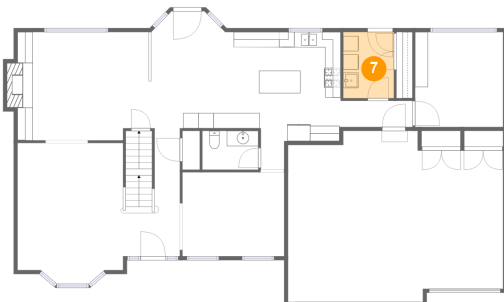
6 Floor 2 - Hall



Dimensions: 3'3" x 11'1"
Area: 75 sq. ft
Counted as living area: Yes

Heated: Yes
Finished: Yes
Enclosed: Yes
Contiguous: Yes
Permitted: Yes
Wet space: No
Addition: No
Conversion: No

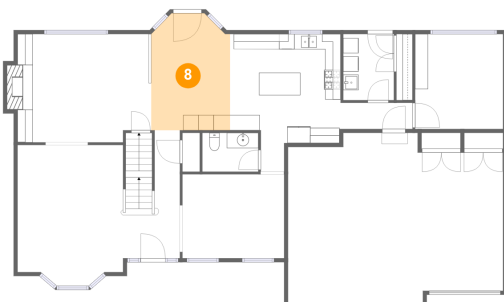
7 Floor 2 - Laundry



Dimensions: 6'7" x 8'7"
Area: 57 sq. ft
Counted as living area: Yes

Heated: Yes
Finished: Yes
Enclosed: Yes
Contiguous: Yes
Permitted: Yes
Wet space: No
Addition: No
Conversion: No

8 Floor 2 - Breakfast Nook

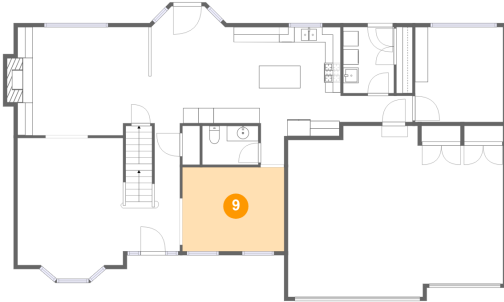


Dimensions: 10'3" x 15'3"
Area: 147 sq. ft
Counted as living area: Yes

Heated: Yes
Finished: Yes
Enclosed: Yes
Contiguous: Yes
Permitted: Yes
Wet space: No
Addition: No
Conversion: No

482 Bond Drive, Batavia, Kane County, Illinois, United States, 60510

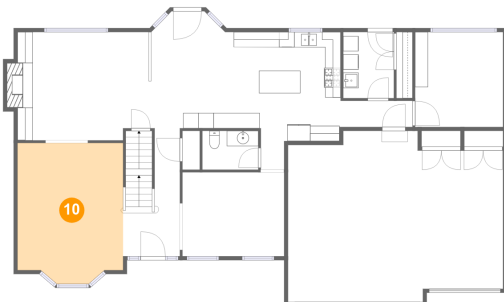
9 Floor 2 - Dining Room



Dimensions: 13'3" x 10'11"
Area: 145 sq. ft
Counted as living area: Yes

Heated: Yes
Finished: Yes
Enclosed: Yes
Contiguous: Yes
Permitted: Yes
Wet space: No
Addition: No
Conversion: No

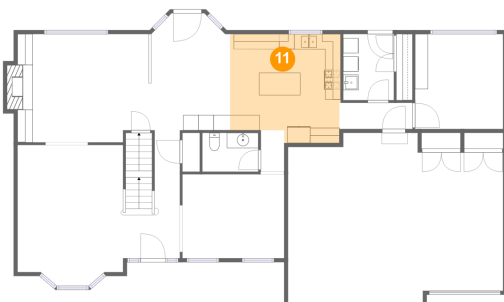
10 Floor 2 - Living Room



Dimensions: 13'9" x 18'4"
Area: 238 sq. ft
Counted as living area: Yes

Heated: Yes
Finished: Yes
Enclosed: Yes
Contiguous: Yes
Permitted: Yes
Wet space: No
Addition: No
Conversion: No

11 Floor 2 - Kitchen

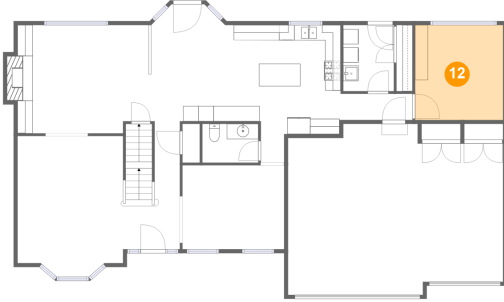


Dimensions: 14'4" x 14'2"
Area: 192 sq. ft
Counted as living area: Yes

Heated: Yes
Finished: Yes
Enclosed: Yes
Contiguous: Yes
Permitted: Yes
Wet space: No
Addition: No
Conversion: No

482 Bond Drive, Batavia, Kane County, Illinois, United States, 60510

12 Floor 2 - OFFICE/BEDROOM



Dimensions: 11'5" x 12'4"
Area: 141 sq. ft
Counted as living area: Yes

Heated: Yes
Finished: Yes
Enclosed: Yes
Contiguous: Yes
Permitted: Yes
Wet space: No
Addition: No
Conversion: No

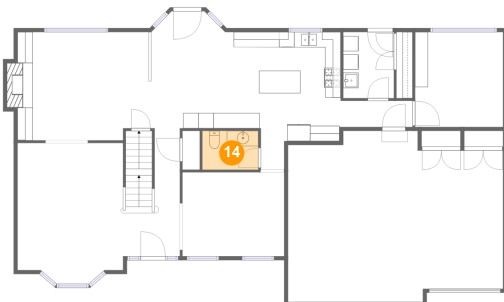
13 Floor 2 - Family Room



Dimensions: 17'4" x 14'1"
Area: 247 sq. ft
Counted as living area: Yes

Heated: Yes
Finished: Yes
Enclosed: Yes
Contiguous: Yes
Permitted: Yes
Wet space: No
Addition: No
Conversion: No

14 Floor 2 - WC

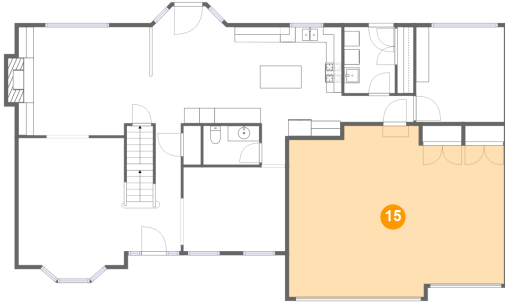


Dimensions: 7'3" x 5'1"
Area: 37 sq. ft
Counted as living area: Yes

Heated: Yes
Finished: Yes
Enclosed: Yes
Contiguous: Yes
Permitted: Yes
Wet space: Yes
Addition: No
Conversion: No

482 Bond Drive, Batavia, Kane County, Illinois, United States, 60510

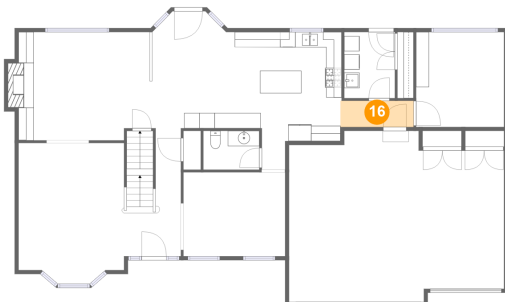
15 Floor 2 - Garage



Dimensions: 27'11" x 22'3"
Area: 563 sq. ft
Counted as living area: No

Heated: No
Finished: Yes
Enclosed: Yes
Contiguous: Yes
Permitted: Yes
Wet space: No
Addition: No
Conversion: No

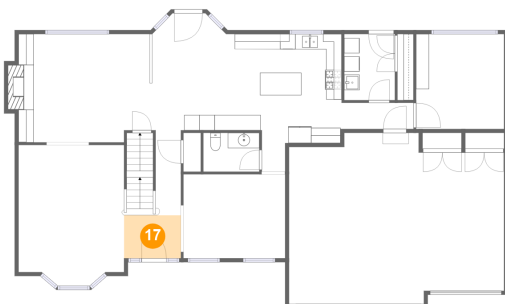
16 Floor 2 - Hall



Dimensions: 9'6" x 3'4"
Area: 32 sq. ft
Counted as living area: Yes

Heated: Yes
Finished: Yes
Enclosed: Yes
Contiguous: Yes
Permitted: Yes
Wet space: No
Addition: No
Conversion: No

17 Floor 2 - Foyer

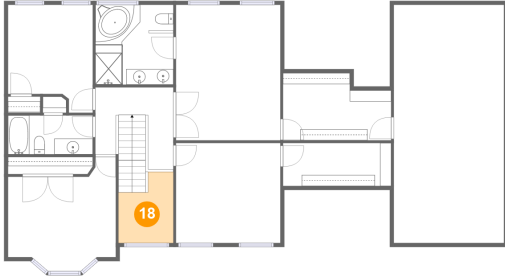


Dimensions: 7'5" x 5'7"
Area: 41 sq. ft
Counted as living area: Yes

Heated: Yes
Finished: Yes
Enclosed: Yes
Contiguous: Yes
Permitted: Yes
Wet space: No
Addition: No
Conversion: No

482 Bond Drive, Batavia, Kane County, Illinois, United States, 60510

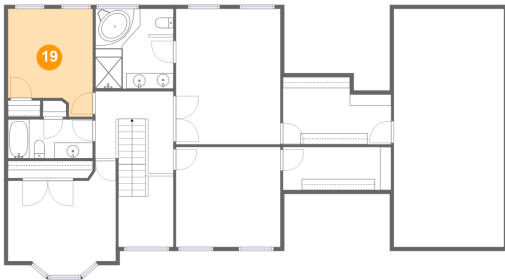
18 Floor 3 - Open To Below



Dimensions: 7'0" x 9'0"
Area: 53 sq. ft
Counted as living area: No

Heated: No
Finished: No
Enclosed: No
Contiguous: Yes
Permitted: No
Wet space: No
Addition: No
Conversion: No

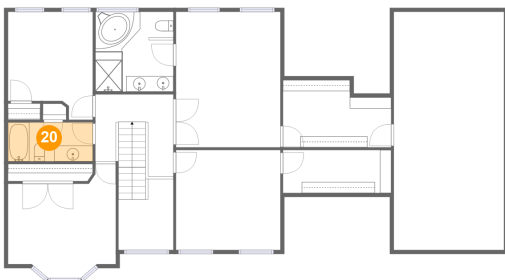
19 Floor 3 - Bedroom



Dimensions: 10'9" x 13'9"
Area: 130 sq. ft
Counted as living area: Yes

Heated: Yes
Finished: Yes
Enclosed: Yes
Contiguous: Yes
Permitted: Yes
Wet space: No
Addition: No
Conversion: No

20 Floor 3 - Bath

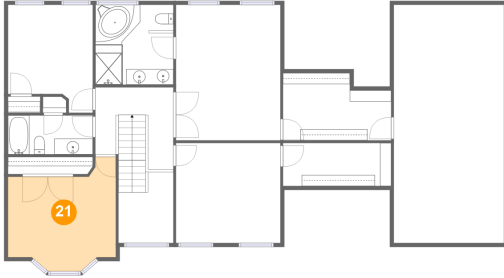


Dimensions: 10'10" x 4'11"
Area: 53 sq. ft
Counted as living area: Yes

Heated: Yes
Finished: Yes
Enclosed: Yes
Contiguous: Yes
Permitted: Yes
Wet space: Yes
Addition: No
Conversion: No

482 Bond Drive, Batavia, Kane County, Illinois, United States, 60510

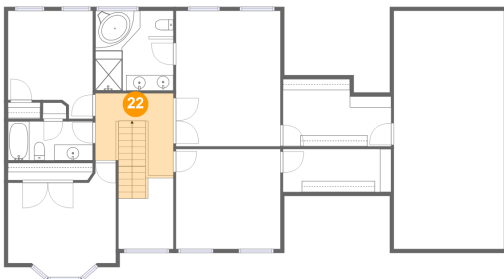
21 Floor 3 - Bedroom



Dimensions: 13'9" x 12'0"
Area: 159 sq. ft
Counted as living area: Yes

Heated: Yes
Finished: Yes
Enclosed: Yes
Contiguous: Yes
Permitted: Yes
Wet space: No
Addition: No
Conversion: No

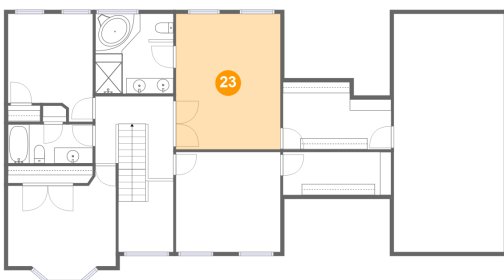
22 Floor 3 - Hall



Dimensions: 9'11" x 10'5"
Area: 110 sq. ft
Counted as living area: Yes

Heated: Yes
Finished: Yes
Enclosed: Yes
Contiguous: Yes
Permitted: Yes
Wet space: No
Addition: No
Conversion: No

23 Floor 3 - Primary Bedroom

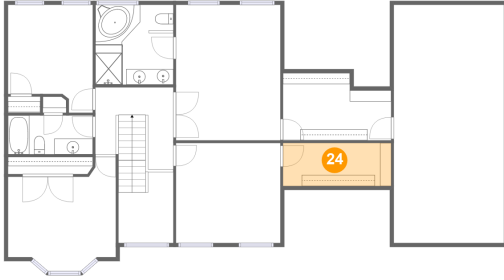


Dimensions: 13'3" x 17'3"
Area: 230 sq. ft
Counted as living area: Yes

Heated: Yes
Finished: Yes
Enclosed: Yes
Contiguous: Yes
Permitted: Yes
Wet space: No
Addition: No
Conversion: No

482 Bond Drive, Batavia, Kane County, Illinois, United States, 60510

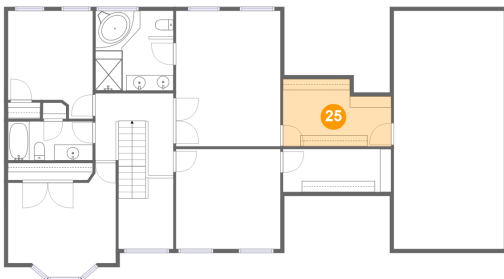
24 Floor 3 - W.I.C.



Dimensions: 13'9" x 5'6"
Area: 75 sq. ft
Counted as living area: Yes

Heated: Yes
Finished: Yes
Enclosed: Yes
Contiguous: Yes
Permitted: Yes
Wet space: No
Addition: No
Conversion: No

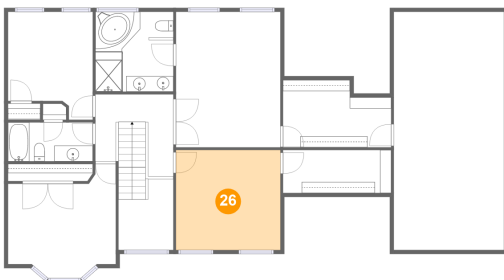
25 Floor 3 - W.I.C.



Dimensions: 13'9" x 8'7"
Area: 106 sq. ft
Counted as living area: Yes

Heated: Yes
Finished: Yes
Enclosed: Yes
Contiguous: Yes
Permitted: Yes
Wet space: No
Addition: No
Conversion: No

26 Floor 3 - Bedroom

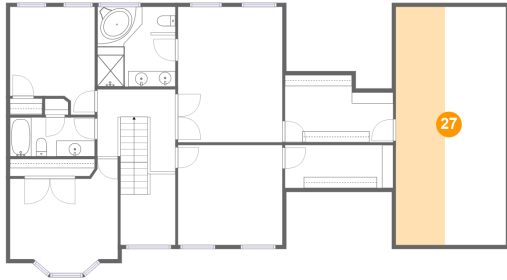


Dimensions: 13'3" x 12'9"
Area: 169 sq. ft
Counted as living area: Yes

Heated: Yes
Finished: Yes
Enclosed: Yes
Contiguous: Yes
Permitted: Yes
Wet space: No
Addition: No
Conversion: No

482 Bond Drive, Batavia, Kane County, Illinois, United States, 60510

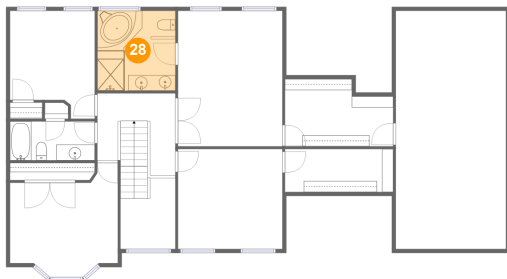
27 Floor 3 - Attic



Dimensions: 14'0" x 30'4"
Area: 190 sq. ft
Counted as living area: No

Heated: No
Finished: No
Enclosed: Yes
Contiguous: Yes
Permitted: Yes
Wet space: No
Addition: No
Conversion: No

28 Floor 3 - Primary Bath



Dimensions: 9'11" x 10'2"
Area: 101 sq. ft
Counted as living area: Yes

Heated: Yes
Finished: Yes
Enclosed: Yes
Contiguous: Yes
Permitted: Yes
Wet space: Yes
Addition: No
Conversion: No