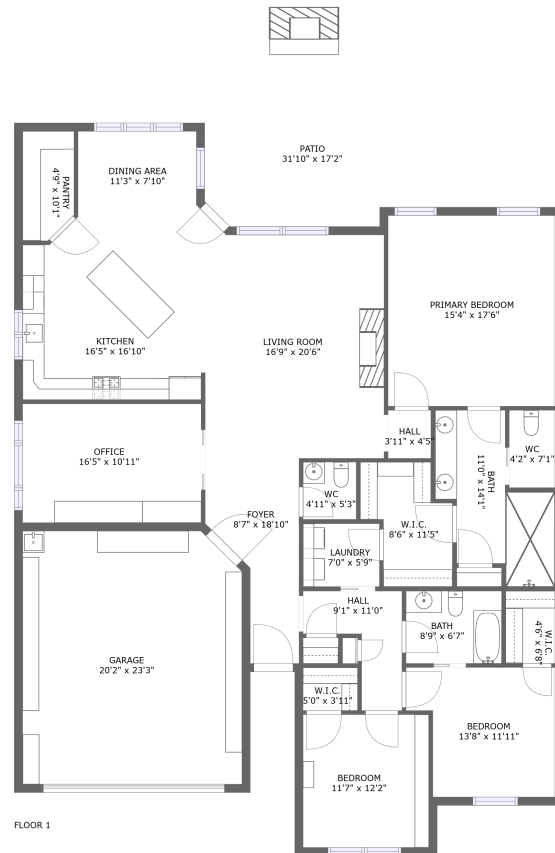



9402 Crysillas Drive, Madison, Madison County, Alabama, United States, 35757



Property summary

 **1** Garages

 **3** Bedrooms

 **2** Bathrooms

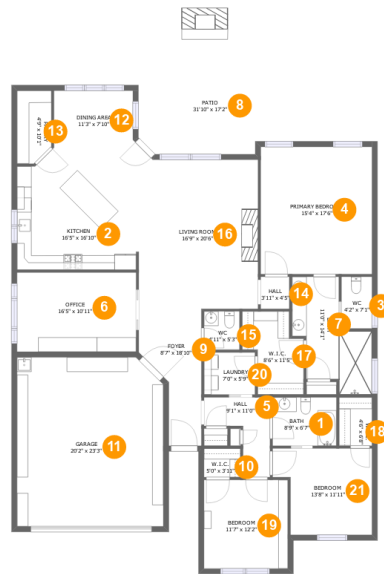
 **1** Half baths

 **1** Floors

 **2,360**
Gross living
area sqft

 **3,280**
Total sqft

9402 Crysillas Drive, Madison, Madison County, Alabama, United States, 35757



Room dimensions

Floor 1

Total sqft: 3280 Living area: 2360

#		Dimensions	sqft	Counted as living area
1	Bath	8'9" x 6'7"	58 sq. ft	Yes
2	Kitchen	16'5" x 16'10"	266 sq. ft	Yes
3	WC	4'2" x 7'1"	30 sq. ft	Yes
4	Primary Bedroom	15'4" x 17'6"	268 sq. ft	Yes
5	Hall	9'1" x 11'0"	62 sq. ft	Yes
6	Office	16'5" x 10'11"	179 sq. ft	Yes
7	Bath	11'0" x 14'1"	119 sq. ft	Yes
8	Patio	31'10" x 17'2"	416 sq. ft	No
9	Foyer	8'7" x 18'10"	118 sq. ft	Yes
10	W.I.C.	5'0" x 3'11"	20 sq. ft	Yes
11	Garage	20'2" x 23'3"	462 sq. ft	No

**9402 Crysillas Drive, Madison, Madison County,
Alabama, United States, 35757**

#		Dimensions	sqft	Counted as living area
12	Dining Area	11'3" x 7'10"	86 sq. ft	Yes
13	Pantry	4'9" x 10'1"	45 sq. ft	Yes
14	Hall	3'11" x 4'5"	17 sq. ft	Yes
15	WC	4'11" x 5'3"	26 sq. ft	Yes
16	Living Room	16'9" x 20'6"	345 sq. ft	Yes
17	W.I.C.	8'6" x 11'5"	76 sq. ft	Yes
18	W.I.C.	4'6" x 6'8"	30 sq. ft	Yes
19	Bedroom	11'7" x 12'2"	141 sq. ft	Yes
20	Laundry	7'0" x 5'9"	41 sq. ft	Yes
21	Bedroom	13'8" x 11'11"	143 sq. ft	Yes

9402 Crysillas Drive, Madison, Madison County, Alabama, United States, 35757

1 Floor 1 - Bath



Dimensions: 8'9" x 6'7"
Area: 58 sq. ft
Counted as living area: Yes

Heated: Yes
Finished: Yes
Enclosed: Yes
Contiguous: Yes
Permitted: Yes
Wet space: Yes
Addition: No
Conversion: No

2 Floor 1 - Kitchen



Dimensions: 16'5" x 16'10"
Area: 266 sq. ft
Counted as living area: Yes

Heated: Yes
Finished: Yes
Enclosed: Yes
Contiguous: Yes
Permitted: Yes
Wet space: No
Addition: No
Conversion: No

**9402 Crysillas Drive, Madison, Madison County,
Alabama, United States, 35757**

3 Floor 1 - WC



Dimensions: 4'2" x 7'1"
Area: 30 sq. ft
Counted as living area: Yes

Heated: Yes
Finished: Yes
Enclosed: Yes
Contiguous: Yes
Permitted: Yes
Wet space: Yes
Addition: No
Conversion: No

4 Floor 1 - Primary Bedroom



Dimensions: 15'4" x 17'6"
Area: 268 sq. ft
Counted as living area: Yes

Heated: Yes
Finished: Yes
Enclosed: Yes
Contiguous: Yes
Permitted: Yes
Wet space: No
Addition: No
Conversion: No

5 Floor 1 - Hall



Dimensions: 9'1" x 11'0"
Area: 62 sq. ft
Counted as living area: Yes

Heated: Yes
Finished: Yes
Enclosed: Yes
Contiguous: Yes
Permitted: Yes
Wet space: No
Addition: No
Conversion: No

9402 Crysillas Drive, Madison, Madison County, Alabama, United States, 35757

6 Floor 1 - Office



Dimensions: 16'5" x 10'11"
Area: 179 sq. ft
Counted as living area: Yes

Heated: Yes
Finished: Yes
Enclosed: Yes
Contiguous: Yes
Permitted: Yes
Wet space: No
Addition: No
Conversion: No

7 Floor 1 - Bath



Dimensions: 11'0" x 14'1"
Area: 119 sq. ft
Counted as living area: Yes

Heated: Yes
Finished: Yes
Enclosed: Yes
Contiguous: Yes
Permitted: Yes
Wet space: Yes
Addition: No
Conversion: No

8 Floor 1 - Patio



Dimensions: 31'10" x 17'2"
Area: 416 sq. ft
Counted as living area: No

Heated: No
Finished: Yes
Enclosed: No
Contiguous: Yes
Permitted: Yes
Wet space: No
Addition: No
Conversion: No

9402 Crysillas Drive, Madison, Madison County, Alabama, United States, 35757

9 Floor 1 - Foyer



Dimensions: 8'7" x 18'10"
Area: 118 sq. ft
Counted as living area: Yes

Heated: Yes
Finished: Yes
Enclosed: Yes
Contiguous: Yes
Permitted: Yes
Wet space: No
Addition: No
Conversion: No

10 Floor 1 - W.I.C.



Dimensions: 5'0" x 3'11"
Area: 20 sq. ft
Counted as living area: Yes

Heated: Yes
Finished: Yes
Enclosed: Yes
Contiguous: Yes
Permitted: Yes
Wet space: No
Addition: No
Conversion: No

11 Floor 1 - Garage



Dimensions: 20'2" x 23'3"
Area: 462 sq. ft
Counted as living area: No

Heated: No
Finished: No
Enclosed: Yes
Contiguous: Yes
Permitted: Yes
Wet space: No
Addition: No
Conversion: No

**9402 Crysillas Drive, Madison, Madison County,
Alabama, United States, 35757**

12 Floor 1 - Dining Area



Dimensions: 11'3" x 7'10"
Area: 86 sq. ft
Counted as living area: Yes

Heated: Yes
Finished: Yes
Enclosed: Yes
Contiguous: Yes
Permitted: Yes
Wet space: No
Addition: No
Conversion: No

13 Floor 1 - Pantry



Dimensions: 4'9" x 10'1"
Area: 45 sq. ft
Counted as living area: Yes

Heated: Yes
Finished: Yes
Enclosed: Yes
Contiguous: Yes
Permitted: Yes
Wet space: No
Addition: No
Conversion: No

14 Floor 1 - Hall



Dimensions: 3'11" x 4'5"
Area: 17 sq. ft
Counted as living area: Yes

Heated: Yes
Finished: Yes
Enclosed: Yes
Contiguous: Yes
Permitted: Yes
Wet space: No
Addition: No
Conversion: No

**9402 Crysillas Drive, Madison, Madison County,
Alabama, United States, 35757**

15 Floor 1 - WC



Dimensions: 4'11" x 5'3"
Area: 26 sq. ft
Counted as living area: Yes

Heated: Yes
Finished: Yes
Enclosed: Yes
Contiguous: Yes
Permitted: Yes
Wet space: Yes
Addition: No
Conversion: No

16 Floor 1 - Living Room



Dimensions: 16'9" x 20'6"
Area: 345 sq. ft
Counted as living area: Yes

Heated: Yes
Finished: Yes
Enclosed: Yes
Contiguous: Yes
Permitted: Yes
Wet space: No
Addition: No
Conversion: No

17 Floor 1 - W.I.C.



Dimensions: 8'6" x 11'5"
Area: 76 sq. ft
Counted as living area: Yes

Heated: Yes
Finished: Yes
Enclosed: Yes
Contiguous: Yes
Permitted: Yes
Wet space: No
Addition: No
Conversion: No

**9402 Crysillas Drive, Madison, Madison County,
Alabama, United States, 35757**

18 Floor 1 - W.I.C.



Dimensions: 4'6" x 6'8"
Area: 30 sq. ft
Counted as living area: Yes

Heated: Yes
Finished: Yes
Enclosed: Yes
Contiguous: Yes
Permitted: Yes
Wet space: No
Addition: No
Conversion: No

19 Floor 1 - Bedroom



Dimensions: 11'7" x 12'2"
Area: 141 sq. ft
Counted as living area: Yes

Heated: Yes
Finished: Yes
Enclosed: Yes
Contiguous: Yes
Permitted: Yes
Wet space: No
Addition: No
Conversion: No

20 Floor 1 - Laundry



Dimensions: 7'0" x 5'9"
Area: 41 sq. ft
Counted as living area: Yes

Heated: Yes
Finished: Yes
Enclosed: Yes
Contiguous: Yes
Permitted: Yes
Wet space: No
Addition: No
Conversion: No

**9402 Crysillas Drive, Madison, Madison County,
Alabama, United States, 35757**

21 Floor 1 - Bedroom



Dimensions: 13'8" x 11'11"
Area: 143 sq. ft
Counted as living area: Yes

Heated: Yes
Finished: Yes
Enclosed: Yes
Contiguous: Yes
Permitted: Yes
Wet space: No
Addition: No
Conversion: No