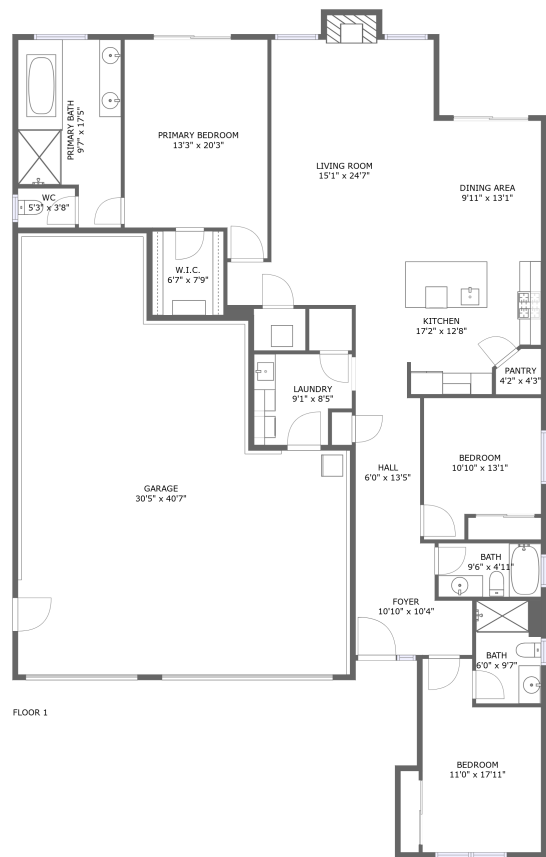


Home report


1585 37th Place, Roy, Forest Grove, Washington County, Oregon,
United States, 97116




Total Area: 1915 sq. ft
Floor 1: 1915 sq. ft
Excluded: Garage 993 sq. ft, Undefined 20 sq. ft, Fireplace 13 sq. ft, Walls: 160 sq. ft

Property summary

**1**
Floors

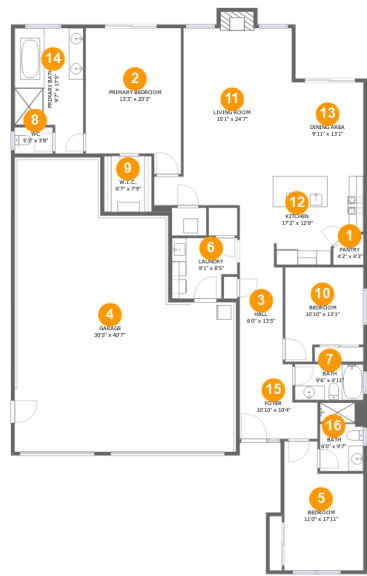
**3**
Bedrooms

**3**
Bathrooms

**1**
Garages

Home report

1585 37th Place, Roy, Forest Grove, Washington County, Oregon,
United States, 97116



Room dimensions

Floor 1

Total:1915sqft

Excluded: 1026sqft

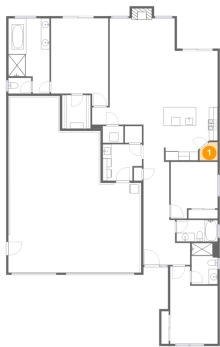
#		Max Dimensions	sqft	Included
1	Pantry	4'2" x 4'3"	16 sq. ft	Yes
2	Primary Bedroom	13'3" x 20'3"	241 sq. ft	Yes
3	Hall	6'0" x 13'5"	81 sq. ft	Yes
4	Garage	30'5" x 40'7"	993 sq. ft	No
5	Bedroom	11'0" x 17'11"	169 sq. ft	Yes
6	Laundry	9'1" x 8'5"	69 sq. ft	Yes
7	Bath	9'6" x 4'11"	47 sq. ft	Yes
8	WC	5'3" x 3'8"	19 sq. ft	Yes
9	W.I.C.	6'7" x 7'9"	51 sq. ft	Yes
10	Bedroom	10'10" x 13'1"	126 sq. ft	Yes
11	Living Room	15'1" x 24'7"	368 sq. ft	Yes

Home report

**1585 37th Place, Roy, Forest Grove, Washington County, Oregon,
United States, 97116**

#		Max Dimensions	sqft	Included
12	Kitchen	17'2" x 12'8"	194 sq. ft	Yes
13	Dining Area	9'11" x 13'1"	130 sq. ft	Yes
14	Primary Bath	9'7" x 17'5"	144 sq. ft	Yes
15	Foyer	10'10" x 10'4"	94 sq. ft	Yes
16	Bath	6'0" x 9'7"	58 sq. ft	Yes

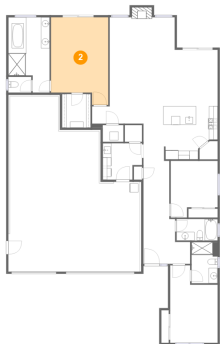
1 Floor 1 - Pantry



Max Dimensions: 4'2" x 4'3"
Calculated Area: 16 sq. ft
Included: Yes

Heated: Yes
Finished: Yes
Enclosed: Yes
Contiguous: Yes
Permitted: Yes
Wet space: No
Addition: No
Conversion: No

2 Floor 1 - Primary Bedroom



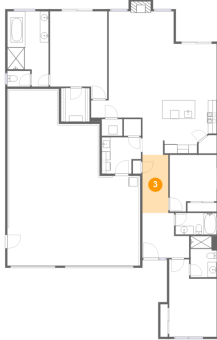
Max Dimensions: 13'3" x 20'3"
Calculated Area: 241 sq. ft
Included: Yes

Heated: Yes
Finished: Yes
Enclosed: Yes
Contiguous: Yes
Permitted: Yes
Wet space: No
Addition: No
Conversion: No

Home report

1585 37th Place, Roy, Forest Grove, Washington County, Oregon,
United States, 97116

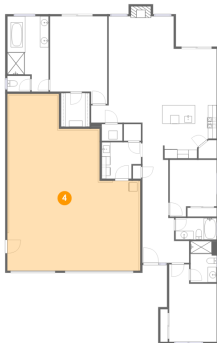
3 Floor 1 - Hall



Max Dimensions: 6'0" x 13'5"
Calculated Area: 81 sq. ft
Included: Yes

Heated: Yes
Finished: Yes
Enclosed: Yes
Contiguous: Yes
Permitted: Yes
Wet space: No
Addition: No
Conversion: No

4 Floor 1 - Garage



Max Dimensions: 30'5" x 40'7"
Calculated Area: 993 sq. ft
Included: No

Heated: No
Finished: No
Enclosed: Yes
Contiguous: Yes
Permitted: Yes
Wet space: No
Addition: No
Conversion: No

5 Floor 1 - Bedroom

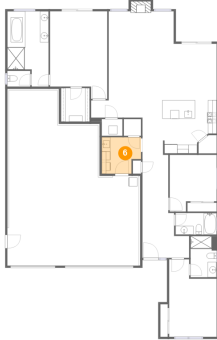


Max Dimensions: 11'0" x 17'11"
Calculated Area: 169 sq. ft
Included: Yes

Heated: Yes
Finished: Yes
Enclosed: Yes
Contiguous: Yes
Permitted: Yes
Wet space: No
Addition: No
Conversion: No

1585 37th Place, Roy, Forest Grove, Washington County, Oregon,
United States, 97116

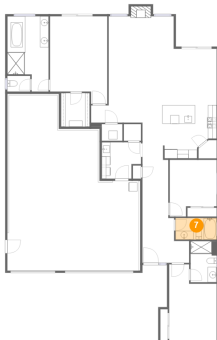
6 Floor 1 - Laundry



Max Dimensions: 9'1" x 8'5"
Calculated Area: 69 sq. ft
Included: Yes

Heated: Yes
Finished: Yes
Enclosed: Yes
Contiguous: Yes
Permitted: Yes
Wet space: No
Addition: No
Conversion: No

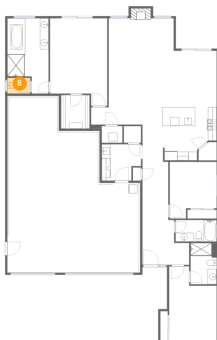
7 Floor 1 - Bath



Max Dimensions: 9'6" x
4'11"
Calculated Area: 47 sq. ft
Included: Yes

Heated: Yes
Finished: Yes
Enclosed: Yes
Contiguous:
Yes
Permitted: Yes
Wet space: Yes
Addition: No
Conversion: No

8 Floor 1 - WC



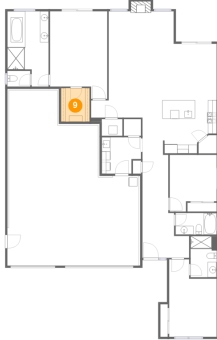
Max Dimensions: 5'3" x 3'8"
Calculated Area: 19 sq. ft
Included: Yes

Heated: Yes
Finished: Yes
Enclosed: Yes
Contiguous: Yes
Permitted: Yes
Wet space: Yes
Addition: No
Conversion: No

Home report

1585 37th Place, Roy, Forest Grove, Washington County, Oregon,
United States, 97116

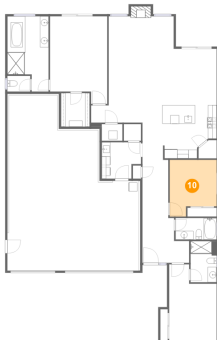
9 Floor 1 - W.I.C.



Max Dimensions: 6'7" x 7'9"
Calculated Area: 51 sq. ft
Included: Yes

Heated: Yes
Finished: Yes
Enclosed: Yes
Contiguous: Yes
Permitted: Yes
Wet space: No
Addition: No
Conversion: No

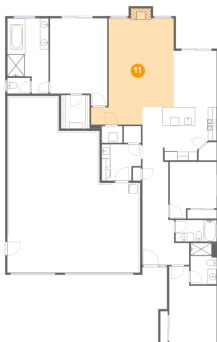
10 Floor 1 - Bedroom



Max Dimensions: 10'10" x 13'1"
Calculated Area: 126 sq. ft
Included: Yes

Heated: Yes
Finished: Yes
Enclosed: Yes
Contiguous: Yes
Permitted: Yes
Wet space: No
Addition: No
Conversion: No

11 Floor 1 - Living Room



Max Dimensions: 15'1" x 24'7"
Calculated Area: 368 sq. ft
Included: Yes

Heated: Yes
Finished: Yes
Enclosed: Yes
Contiguous: Yes
Permitted: Yes
Wet space: No
Addition: No
Conversion: No

Home report

1585 37th Place, Roy, Forest Grove, Washington County, Oregon,
United States, 97116

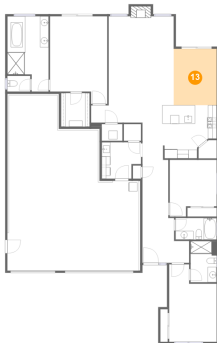
12 Floor 1 - Kitchen



Max Dimensions: 17'2" x 12'8"
Calculated Area: 194 sq. ft
Included: Yes

Heated: Yes
Finished: Yes
Enclosed: Yes
Contiguous: Yes
Permitted: Yes
Wet space: No
Addition: No
Conversion: No

13 Floor 1 - Dining Area



Max Dimensions: 9'11" x 13'1"
Calculated Area: 130 sq. ft
Included: Yes

Heated: Yes
Finished: Yes
Enclosed: Yes
Contiguous: Yes
Permitted: Yes
Wet space: No
Addition: No
Conversion: No

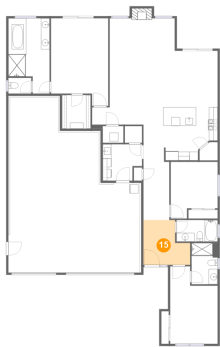
14 Floor 1 - Primary Bath



Max Dimensions: 9'7" x 17'5"
Calculated Area: 144 sq. ft
Included: Yes

Heated: Yes
Finished: Yes
Enclosed: Yes
Contiguous: Yes
Permitted: Yes
Wet space: Yes
Addition: No
Conversion: No

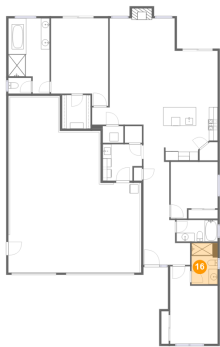
15 Floor 1 - Foyer



Max Dimensions: 10'10" x 10'4"
Calculated Area: 94 sq. ft
Included: Yes

Heated: Yes
Finished: Yes
Enclosed: Yes
Contiguous: Yes
Permitted: Yes
Wet space: No
Addition: No
Conversion: No

16 Floor 1 - Bath



Max Dimensions: 6'0" x 9'7"
Calculated Area: 58 sq. ft
Included: Yes

Heated: Yes
Finished: Yes
Enclosed: Yes
Contiguous: Yes
Permitted: Yes
Wet space: Yes
Addition: No
Conversion: No