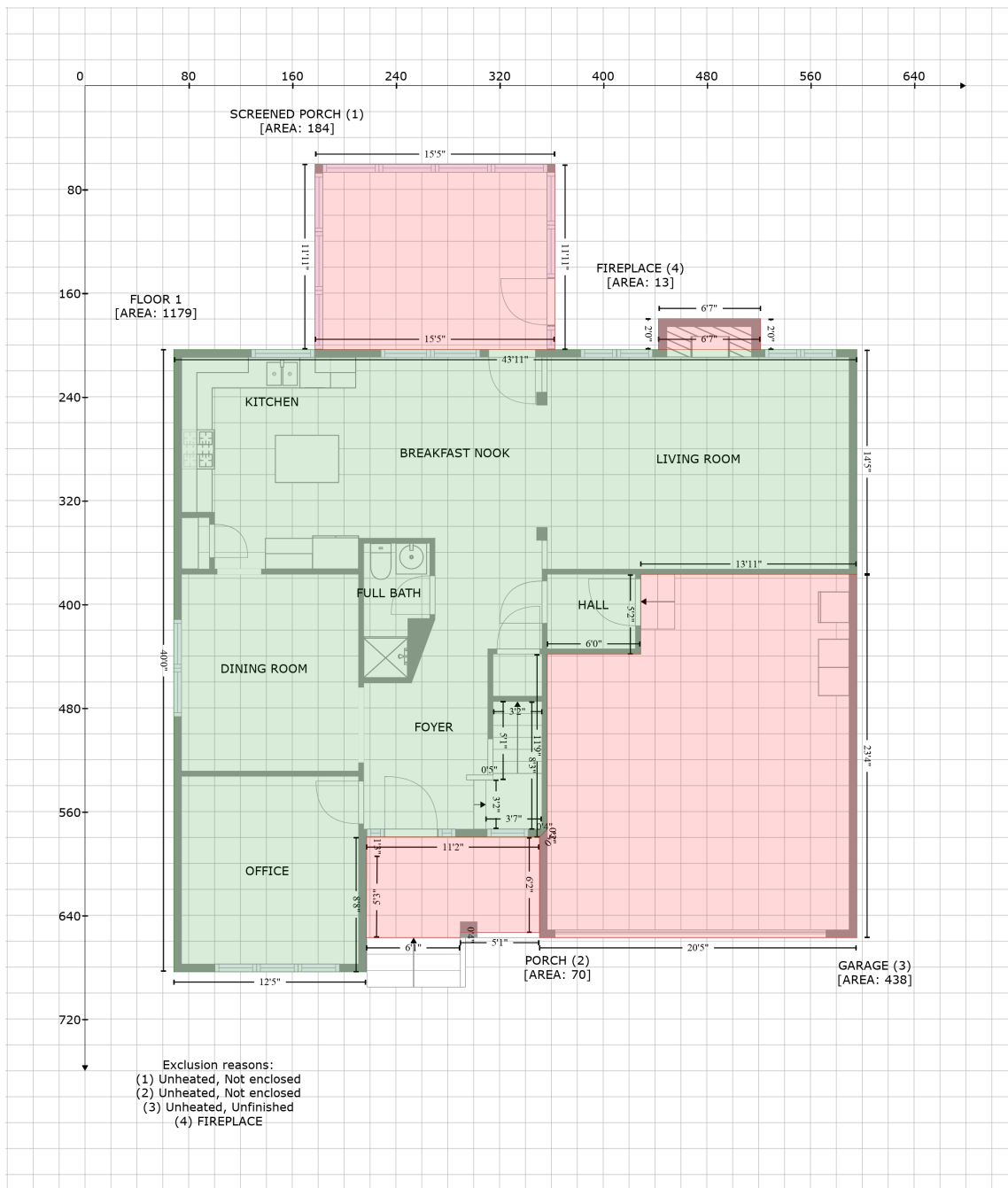


713 Crimson Oak Lane, Fuquay-Varina, Wake County, North Carolina, United States, 27526

Gross Living Area: 3379 sq. ft



Space	Area (sq. ft)	Calculation
FLOOR 1 (Living area)	1179	Coordinate Polygon Area Algorithm using inches $-((595.9 + 595.9) * (203.5 - 376.9) + (595.9 + 428.9) * (376.9 - 376.9) + (428.9 + 428.9) * (376.9 - 438.5) + (428.9 + 356.8) * (438.5 - 438.5) + (356.8 + 356.8) * (438.5 - 573.6) + (356.8 + 356.5) * (573.6 - 573.8) + (356.5 + 352.8) * (573.8 - 577.7) + (352.8 + 350.9) * (577.7 - 579.6) + (350.9 + 217.2) * (579.6 - 579.6) + (217.2 + 217.2) * (579.6 - 683.6) + (217.2 + 68.5) * (683.6 - 683.6) + (68.5 + 68.5) * (683.6 - 203.5) + (68.5 + 595.9) * (203.5 - 203.5) * 0.5 * 0.00694$
SCREENED PORCH	184	$-((362.7 + 362.7) * (60.7 - 203.5) + (362.7 + 177.6) * (203.5 - 203.5) + (177.6 + 177.6) * (203.5 -$

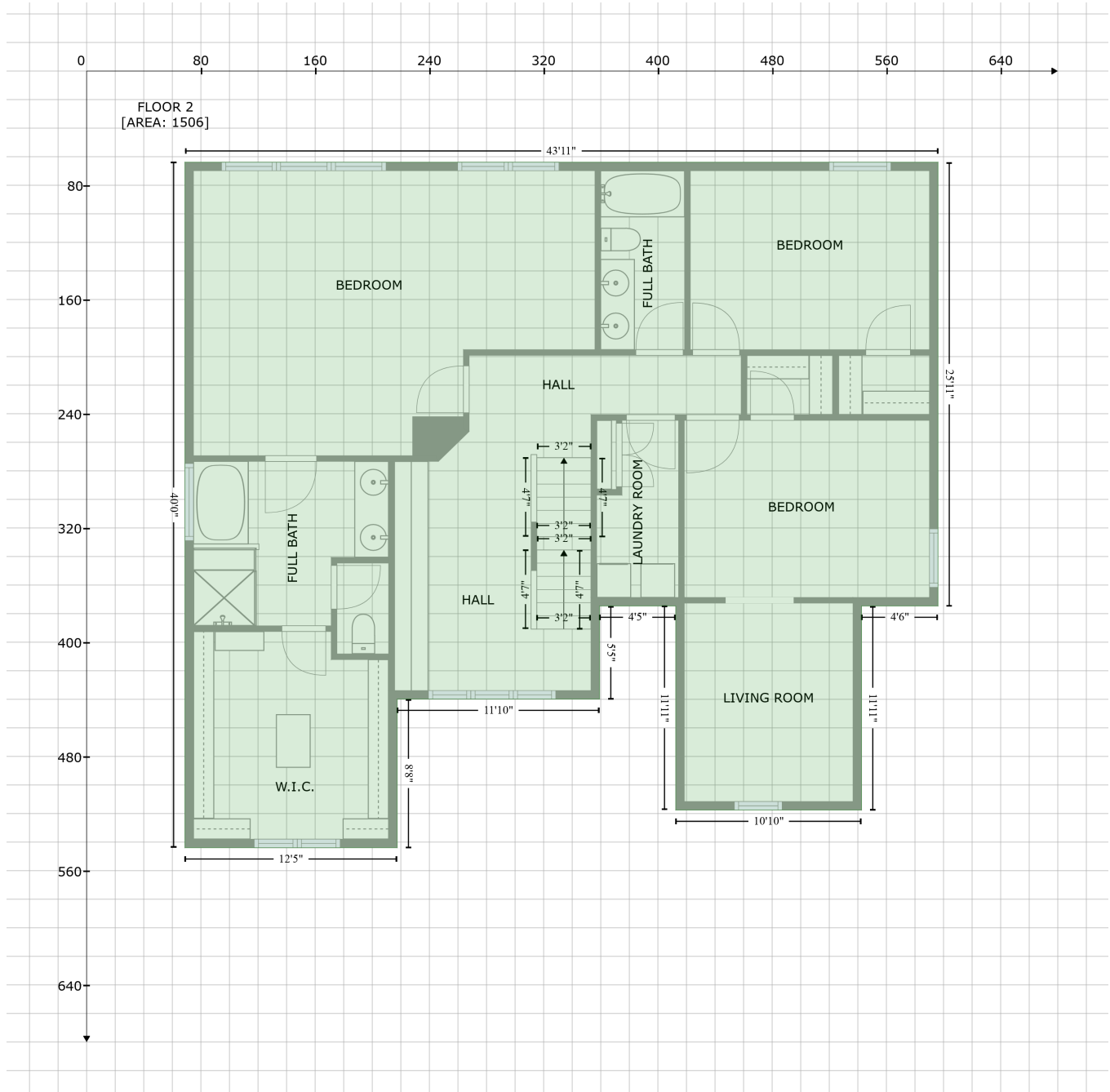
713 Crimson Oak Lane, Fuquay-Varina, Wake County, North Carolina, United States, 27526

Gross Living Area: 3379 sq. ft

Space	Area (sq. ft)	Calculation <small>Coordinate Polygon Area Algorithm using inches</small>
(Non-living area)		$60.7 + (177.6 + 362.7) * (60.7 - 60.7) * 0.5 * 0.00694$
PORCH (Non-living area)	70	$-((217.7 + 350.9) * (579.6 - 579.7) + (350.9 + 350.9) * (579.7 - 653.3) + (350.9 + 289.7) * (653.3 - 653.3) + (289.7 + 289.7) * (653.3 - 657.3) + (289.7 + 217.2) * (657.3 - 657.3) + (217.2 + 217.7) * (657.3 - 594.3) + (217.7 + 217.7) * (594.3 - 579.6)) * 0.5 * 0.00694$
GARAGE (Non-living area)	438	$-((595.9 + 595.9) * (376.9 - 657.3) + (595.9 + 350.9) * (657.3 - 657.3) + (350.9 + 350.9) * (657.3 - 579.6) + (350.9 + 356.9) * (579.6 - 573.6) + (356.9 + 356.8) * (573.6 - 438.5) + (356.8 + 428.9) * (438.5 - 438.5) + (428.9 + 428.9) * (438.5 - 376.9) + (428.9 + 595.9) * (376.9 - 376.9)) * 0.5 * 0.00694$
FIREPLACE (Non-living area)	13	$-((521.6 + 521.6) * (179.7 - 203.5) + (521.6 + 442.6) * (203.5 - 203.5) + (442.6 + 442.6) * (203.5 - 179.7) + (442.6 + 521.6) * (179.7 - 179.7)) * 0.5 * 0.00694$

713 Crimson Oak Lane, Fuquay-Varina, Wake County, North Carolina, United States, 27526

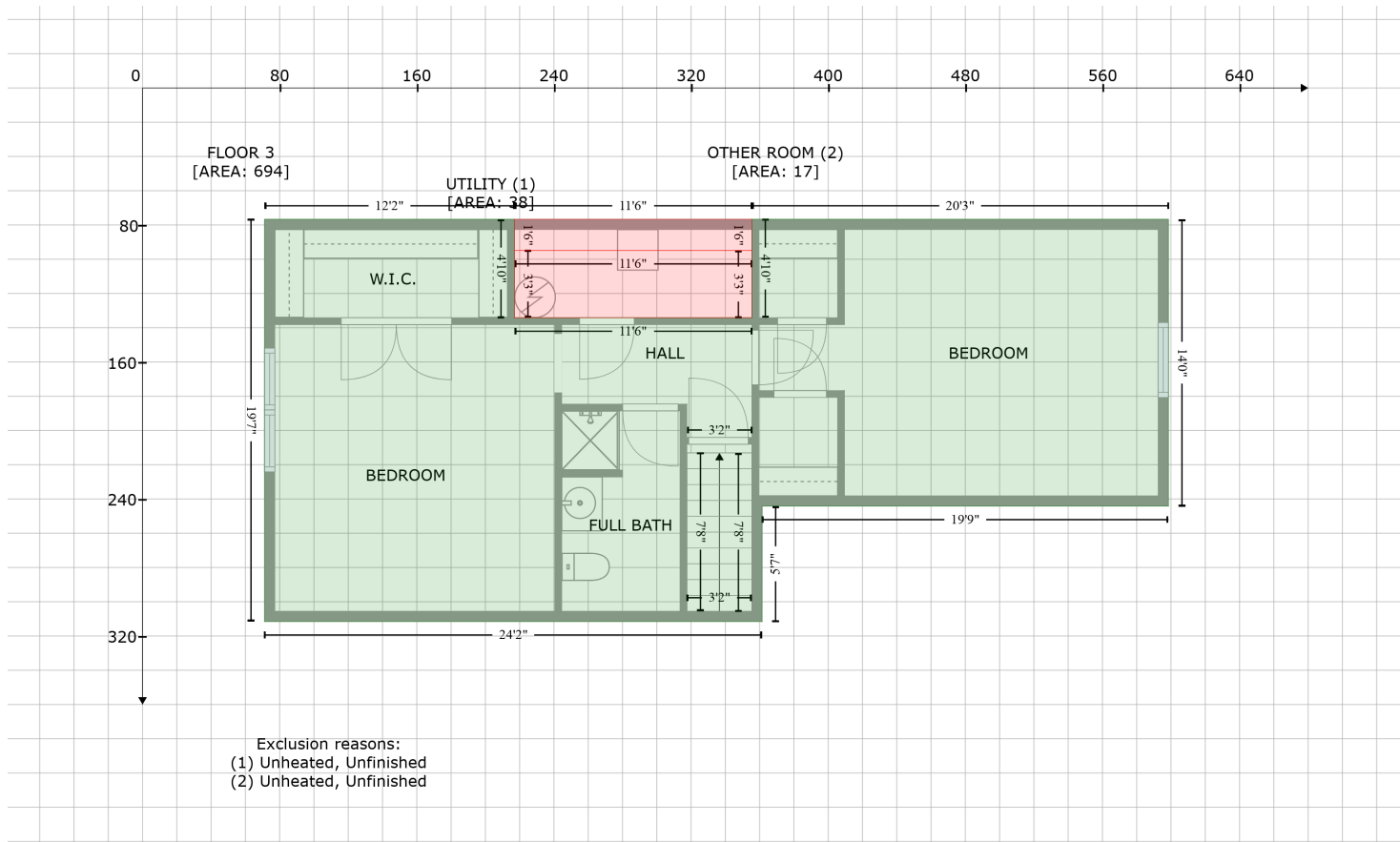
Gross Living Area: 3379 sq. ft



Space	Area (sq. ft)	Calculation <small>Coordinate Polygon Area Algorithm using inches</small>
FLOOR 2 (Living area)	1506	$ \begin{aligned} & -((596.1 + 596.1) * (63.8 - 374.7) + (596.1 + 542.6) * (374.7 - 374.7) + (542.6 + 542.6) * (374.7 - \\ & 517.6) + (542.6 + 412.5) * (517.6 - 517.6) + (412.5 + 412.5) * (517.6 - 374.7) + (412.5 + 359.1) * \\ & (374.7 - 374.7) + (359.1 + 359.1) * (374.7 - 439.9) + (359.1 + 217.5) * (439.9 - 439.9) + (217.5 + \\ & 217.5) * (439.9 - 543.9) + (217.5 + 68.8) * (543.9 - 543.9) + (68.8 + 68.8) * (543.9 - 63.8) + (68.8 \\ & + 596.1) * (63.8 - 63.8)) * 0.5 * 0.00694 \end{aligned} $

713 Crimson Oak Lane, Fuquay-Varina, Wake County, North Carolina, United States, 27526

Gross Living Area: 3379 sq. ft



Space	Area (sq. ft)	Calculation <small>Coordinate Polygon Area Algorithm using inches</small>
FLOOR 3 (Living area)	694	$-\left((217 + 217) * (76.7 - 134.2) + (217 + 355.5) * (134.2 - 134.2) + (355.5 + 355.5) * (134.2 - 76.7) + (355.5 + 598.5) * (76.7 - 76.7) + (598.5 + 598.5) * (76.7 - 244.2) + (598.5 + 361.5) * (244.2 - 244.2) + (361.5 + 361.4) * (244.2 - 311.5) + (361.4 + 71.2) * (311.5 - 311.5) + (71.2 + 71.2) * (311.5 - 76.7) + (71.2 + 217) * (76.7 - 76.7)\right) * 0.5 * 0.00694$
UTILITY (Non-living area)	38	$-\left((355.5 + 355.5) * (94.8 - 134.2) + (355.5 + 217) * (134.2 - 134.2) + (217 + 217) * (134.2 - 94.8) + (217 + 355.5) * (94.8 - 94.8)\right) * 0.5 * 0.00694$
OTHER ROOM (Non-living area)	17	$-\left((355.5 + 355.5) * (76.7 - 94.8) + (355.5 + 217) * (94.8 - 94.8) + (217 + 217) * (94.8 - 76.7) + (217 + 355.5) * (76.7 - 76.7)\right) * 0.5 * 0.00694$