

Home report

6672 Mallard Lake Court, Roanoke, Roanoke County, Virginia,  
United States, 24018



**Total Area: 4513 sq. ft**

Floor 1: 711 sq. ft, Floor 2: 2074 sq. ft, Floor 3: 1728 sq. ft

Excluded: Garage 949 sq. ft, Utility 99 sq. ft, Fireplace 12 sq. ft, Balcony 49 sq. ft, Porch 103 sq. ft, Patio 674 sq. ft, Deck 152 sq. ft, Walls: 324 sq. ft

Property summary

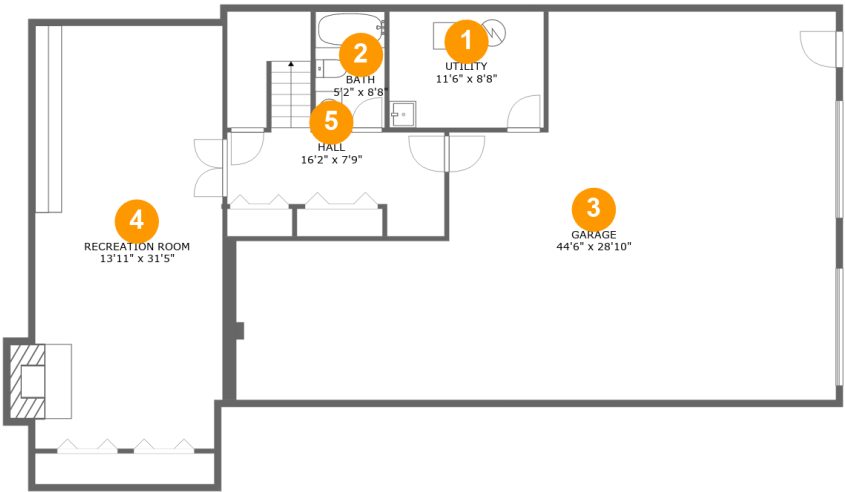
**3**  
Floors

**5**  
Bedrooms

**5**  
Bathrooms

**1**  
Garages

6672 Mallard Lake Court, Roanoke, Roanoke County, Virginia,  
United States, 24018

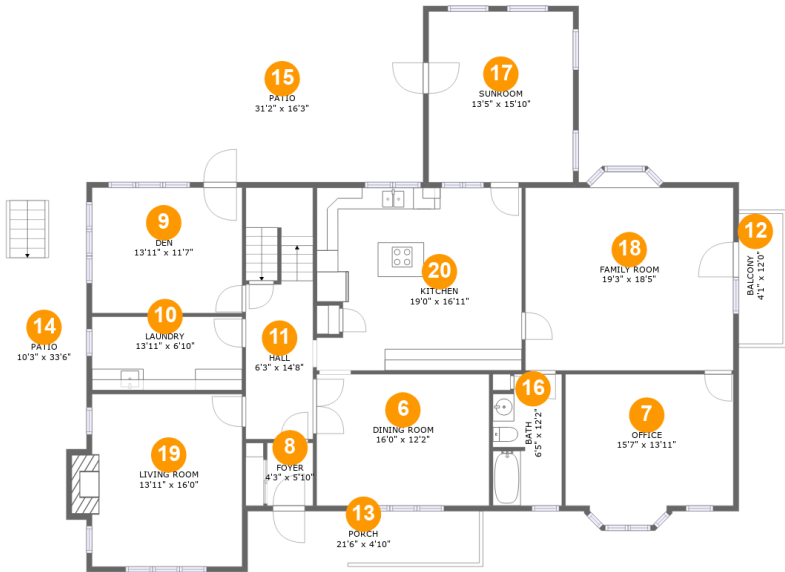


Room dimensions

Floor 1 Total:711sqft   Excluded: 1060sqft

#		Max Dimensions	sqft	Included
1	Utility	11'6" x 8'8"	99 sq. ft	No
2	Bath	5'2" x 8'8"	44 sq. ft	Yes
3	Garage	44'6" x 28'10"	949 sq. ft	No
4	Recreation Room	13'11" x 31'5"	445 sq. ft	Yes
5	Hall	16'2" x 7'9"	149 sq. ft	Yes

6672 Mallard Lake Court, Roanoke, Roanoke County, Virginia,  
United States, 24018



Room dimensions

Floor 2 Total:2074sqft   Excluded: 826sqft

#		Max Dimensions	sqft	Included
6	Dining Room	16'0" x 12'2"	194 sq. ft	Yes
7	Office	15'7" x 13'11"	200 sq. ft	Yes
8	Foyer	4'3" x 5'10"	25 sq. ft	Yes
9	Den	13'11" x 11'7"	161 sq. ft	Yes
10	Laundry	13'11" x 6'10"	95 sq. ft	Yes
11	Hall	6'3" x 14'8"	142 sq. ft	Yes
12	Balcony	4'1" x 12'0"	49 sq. ft	No
13	Porch	21'6" x 4'10"	103 sq. ft	No
14	Patio	10'3" x 33'6"	322 sq. ft	No
15	Patio	31'2" x 16'3"	353 sq. ft	No
16	Bath	6'5" x 12'2"	73 sq. ft	Yes

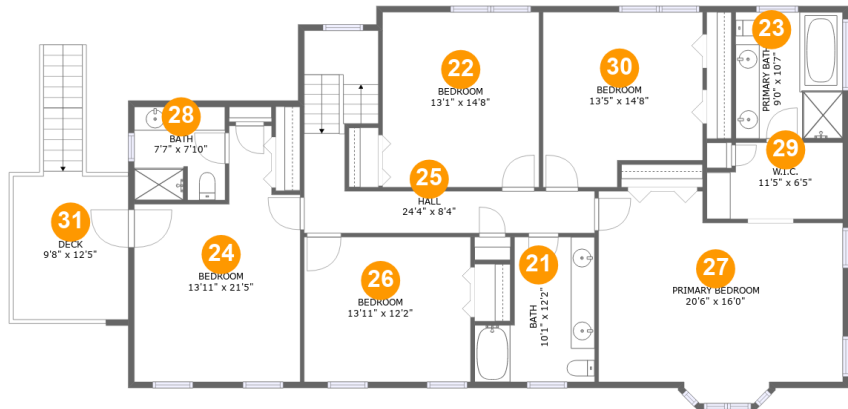
## Home report

**6672 Mallard Lake Court, Roanoke, Roanoke County, Virginia,  
United States, 24018**

#		Max Dimensions	sqft	Included
17	Sunroom	13'5" x 15'10"	212 sq. ft	Yes
18	Family Room	19'3" x 18'5"	334 sq. ft	Yes
19	Living Room	13'11" x 16'0"	232 sq. ft	Yes
20	Kitchen	19'0" x 16'11"	313 sq. ft	Yes

Home report

6672 Mallard Lake Court, Roanoke, Roanoke County, Virginia,  
United States, 24018



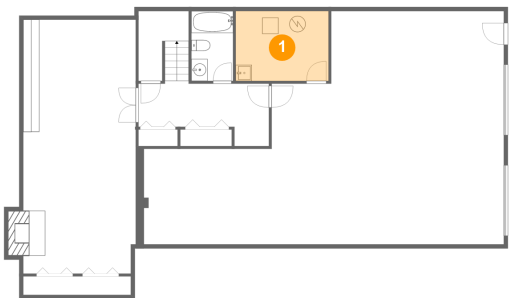
Room dimensions

Floor 3 Total:1728sqft   Excluded: 152sqft

#		Max Dimensions	sqft	Included
21	Bath	10'1" x 12'2"	97 sq. ft	Yes
22	Bedroom	13'1" x 14'8"	192 sq. ft	Yes
23	Primary Bath	9'0" x 10'7"	95 sq. ft	Yes
24	Bedroom	13'11" x 21'5"	232 sq. ft	Yes
25	Hall	24'4" x 8'4"	153 sq. ft	Yes
26	Bedroom	13'11" x 12'2"	169 sq. ft	Yes
27	Primary Bedroom	20'6" x 16'0"	307 sq. ft	Yes
28	Bath	7'7" x 7'10"	59 sq. ft	Yes
29	W.I.C.	11'5" x 6'5"	67 sq. ft	Yes
30	Bedroom	13'5" x 14'8"	180 sq. ft	Yes
31	Deck	9'8" x 12'5"	152 sq. ft	No

6672 Mallard Lake Court, Roanoke, Roanoke County, Virginia,  
United States, 24018

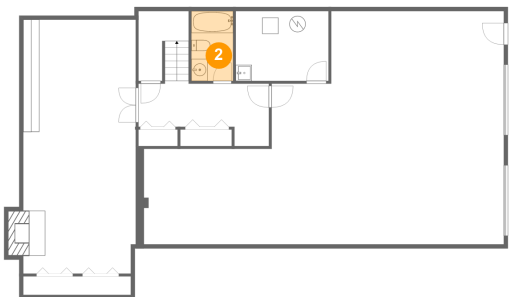
1 Floor 1 - Utility



Max Dimensions: 11'6" x 8'8"  
Calculated Area: 99 sq. ft  
Included: No

Heated: Yes  
Finished: No  
Enclosed: Yes  
Contiguous: Yes  
Permitted: Yes  
Wet space: No  
Addition: No  
Conversion: No

2 Floor 1 - Bath

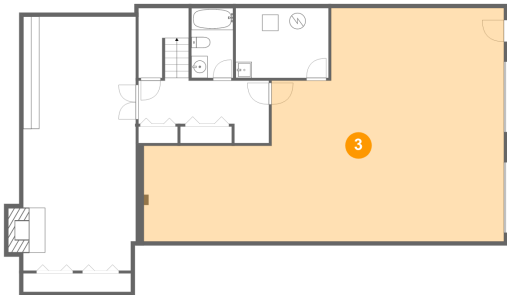


Max Dimensions: 5'2" x 8'8"  
Calculated Area: 44 sq. ft  
Included: Yes

Heated: Yes  
Finished: Yes  
Enclosed: Yes  
Contiguous: Yes  
Permitted: Yes  
Wet space: Yes  
Addition: No  
Conversion: No

6672 Mallard Lake Court, Roanoke, Roanoke County, Virginia,  
United States, 24018

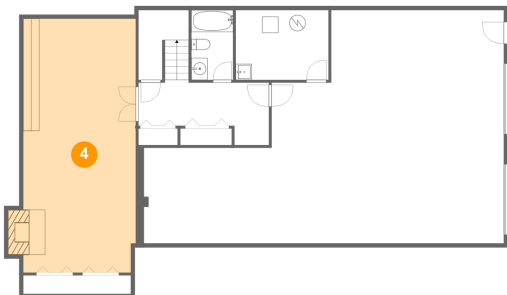
3 Floor 1 - Garage



Max Dimensions: 44'6" x 28'10"  
Calculated Area: 949 sq. ft  
Included: No

Heated: No  
Finished: No  
Enclosed: Yes  
Contiguous: Yes  
Permitted: Yes  
Wet space: No  
Addition: No  
Conversion: No

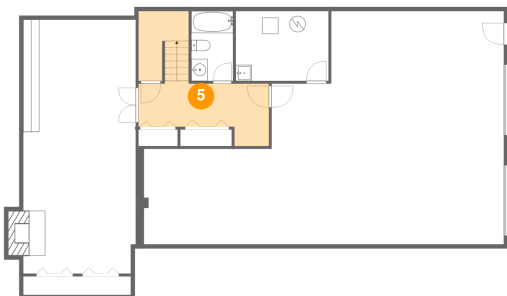
4 Floor 1 - Recreation Room



Max Dimensions: 13'11" x 31'5"  
Calculated Area: 445 sq. ft  
Included: Yes

Heated: Yes  
Finished: Yes  
Enclosed: Yes  
Contiguous: Yes  
Permitted: Yes  
Wet space: No  
Addition: No  
Conversion: No

5 Floor 1 - Hall



Max Dimensions: 16'2" x 7'9"  
Calculated Area: 149 sq. ft  
Included: Yes

Heated: Yes  
Finished: Yes  
Enclosed: Yes  
Contiguous: Yes  
Permitted: Yes  
Wet space: No  
Addition: No  
Conversion: No

6672 Mallard Lake Court, Roanoke, Roanoke County, Virginia,  
United States, 24018

6 Floor 2 - Dining Room



Max Dimensions: 16'0" x 12'2"  
Calculated Area: 194 sq. ft  
Included: Yes

Heated: Yes  
Finished: Yes  
Enclosed: Yes  
Contiguous: Yes  
Permitted: Yes  
Wet space: No  
Addition: No  
Conversion: No

7 Floor 2 - Office



Max Dimensions: 15'7" x 13'11"  
Calculated Area: 200 sq. ft  
Included: Yes

Heated: Yes  
Finished: Yes  
Enclosed: Yes  
Contiguous: Yes  
Permitted: Yes  
Wet space: No  
Addition: No  
Conversion: No

8 Floor 2 - Foyer



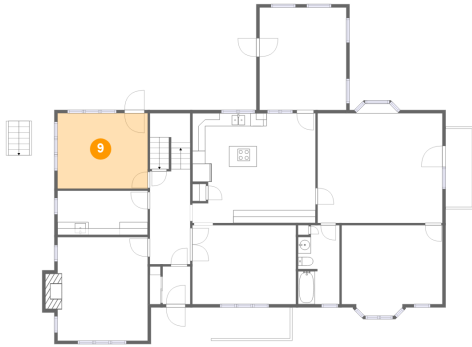
Max Dimensions: 4'3" x 5'10"  
Calculated Area: 25 sq. ft  
Included: Yes

Heated: Yes  
Finished: Yes  
Enclosed: Yes  
Contiguous: Yes  
Permitted: Yes  
Wet space: No  
Addition: No  
Conversion: No



6672 Mallard Lake Court, Roanoke, Roanoke County, Virginia,  
United States, 24018

## 9 Floor 2 - Den



Max Dimensions: 13'11" x 11'7"  
Calculated Area: 161 sq. ft  
Included: Yes

Heated: Yes  
Finished: Yes  
Enclosed: Yes  
Contiguous: Yes  
Permitted: Yes  
Wet space: No  
Addition: No  
Conversion: No

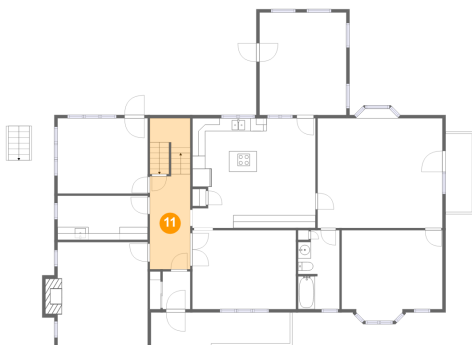
## 10 Floor 2 - Laundry



Max Dimensions: 13'11" x 6'10"  
Calculated Area: 95 sq. ft  
Included: Yes

Heated: Yes  
Finished: Yes  
Enclosed: Yes  
Contiguous: Yes  
Permitted: Yes  
Wet space: No  
Addition: No  
Conversion: No

## 11 Floor 2 - Hall

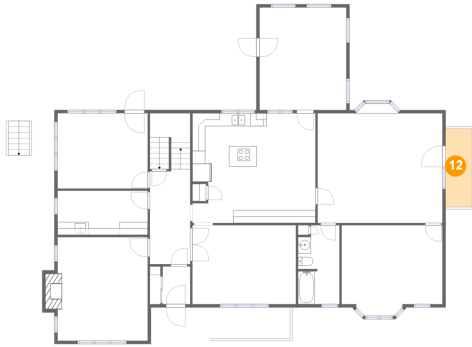


Max Dimensions: 6'3" x 14'8"  
Calculated Area: 142 sq. ft  
Included: Yes

Heated: Yes  
Finished: Yes  
Enclosed: Yes  
Contiguous: Yes  
Permitted: Yes  
Wet space: No  
Addition: No  
Conversion: No

6672 Mallard Lake Court, Roanoke, Roanoke County, Virginia,  
United States, 24018

## 12 Floor 2 - Balcony



Max Dimensions: 4'1" x  
12'0"  
Calculated Area: 49 sq. ft  
Included: No

Heated: No  
Finished: Yes  
Enclosed: No  
Contiguous:  
Yes  
Permitted: Yes  
Wet space: No  
Addition: No  
Conversion: No

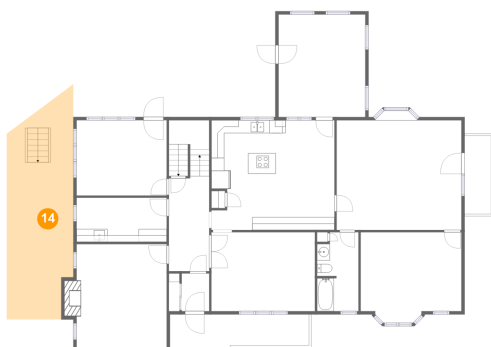
## 13 Floor 2 - Porch



Max Dimensions: 21'6" x  
4'10"  
Calculated Area: 103 sq. ft  
Included: No

Heated: No  
Finished: Yes  
Enclosed: No  
Contiguous:  
Yes  
Permitted: Yes  
Wet space: No  
Addition: No  
Conversion: No

## 14 Floor 2 - Patio

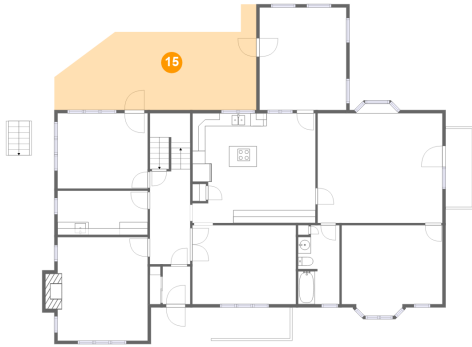


Max Dimensions: 10'3" x  
33'6"  
Calculated Area: 322 sq. ft  
Included: No

Heated: No  
Finished: Yes  
Enclosed: No  
Contiguous:  
Yes  
Permitted: Yes  
Wet space: No  
Addition: No  
Conversion: No

6672 Mallard Lake Court, Roanoke, Roanoke County, Virginia,  
United States, 24018

## 15 Floor 2 - Patio



Max Dimensions: 31'2" x 16'3"  
Calculated Area: 353 sq. ft  
Included: No

Heated: No  
Finished: Yes  
Enclosed: No  
Contiguous: Yes  
Permitted: Yes  
Wet space: No  
Addition: No  
Conversion: No

## 16 Floor 2 - Bath



Max Dimensions: 6'5" x 12'2"  
Calculated Area: 73 sq. ft  
Included: Yes

Heated: Yes  
Finished: Yes  
Enclosed: Yes  
Contiguous: Yes  
Permitted: Yes  
Wet space: Yes  
Addition: No  
Conversion: No

## 17 Floor 2 - Sunroom

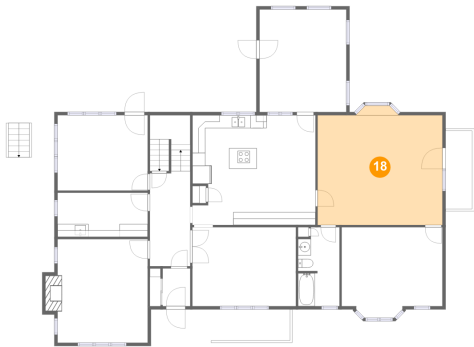


Max Dimensions: 13'5" x 15'10"  
Calculated Area: 212 sq. ft  
Included: Yes

Heated: Yes  
Finished: Yes  
Enclosed: Yes  
Contiguous: Yes  
Permitted: Yes  
Wet space: No  
Addition: No  
Conversion: No

6672 Mallard Lake Court, Roanoke, Roanoke County, Virginia,  
United States, 24018

18 Floor 2 - Family Room



Max Dimensions: 19'3" x 18'5"  
Calculated Area: 334 sq. ft  
Included: Yes

Heated: Yes  
Finished: Yes  
Enclosed: Yes  
Contiguous: Yes  
Permitted: Yes  
Wet space: No  
Addition: No  
Conversion: No

19 Floor 2 - Living Room



Max Dimensions: 13'11" x 16'0"  
Calculated Area: 232 sq. ft  
Included: Yes

Heated: Yes  
Finished: Yes  
Enclosed: Yes  
Contiguous: Yes  
Permitted: Yes  
Wet space: No  
Addition: No  
Conversion: No

20 Floor 2 - Kitchen



Max Dimensions: 19'0" x 16'11"  
Calculated Area: 313 sq. ft  
Included: Yes

Heated: Yes  
Finished: Yes  
Enclosed: Yes  
Contiguous: Yes  
Permitted: Yes  
Wet space: No  
Addition: No  
Conversion: No

6672 Mallard Lake Court, Roanoke, Roanoke County, Virginia,  
United States, 24018

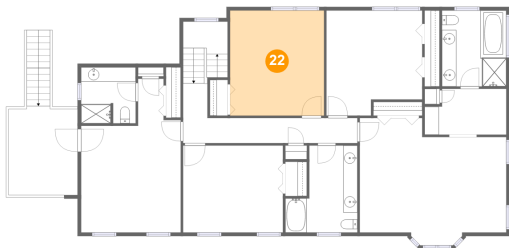
### 21 Floor 3 - Bath



Max Dimensions: 10'1" x 12'2"  
Calculated Area: 97 sq. ft  
Included: Yes

Heated: Yes  
Finished: Yes  
Enclosed: Yes  
Contiguous: Yes  
Permitted: Yes  
Wet space: Yes  
Addition: No  
Conversion: No

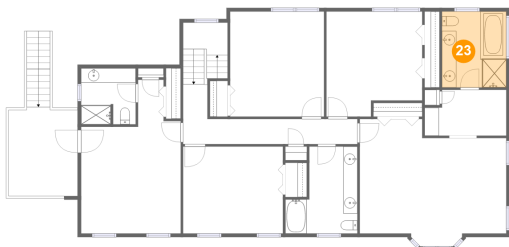
### 22 Floor 3 - Bedroom



Max Dimensions: 13'1" x 14'8"  
Calculated Area: 192 sq. ft  
Included: Yes

Heated: Yes  
Finished: Yes  
Enclosed: Yes  
Contiguous: Yes  
Permitted: Yes  
Wet space: No  
Addition: No  
Conversion: No

### 23 Floor 3 - Primary Bath

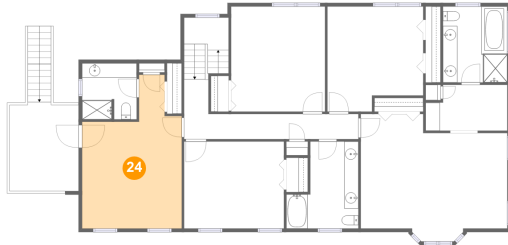


Max Dimensions: 9'0" x 10'7"  
Calculated Area: 95 sq. ft  
Included: Yes

Heated: Yes  
Finished: Yes  
Enclosed: Yes  
Contiguous: Yes  
Permitted: Yes  
Wet space: Yes  
Addition: No  
Conversion: No

6672 Mallard Lake Court, Roanoke, Roanoke County, Virginia,  
United States, 24018

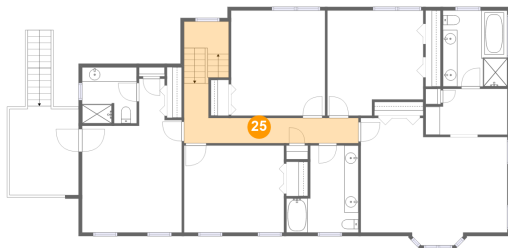
## 24 Floor 3 - Bedroom



Max Dimensions: 13'11" x 21'5"  
Calculated Area: 232 sq. ft  
Included: Yes

Heated: Yes  
Finished: Yes  
Enclosed: Yes  
Contiguous: Yes  
Permitted: Yes  
Wet space: No  
Addition: No  
Conversion: No

## 25 Floor 3 - Hall



Max Dimensions: 24'4" x 8'4"  
Calculated Area: 153 sq. ft  
Included: Yes

Heated: Yes  
Finished: Yes  
Enclosed: Yes  
Contiguous: Yes  
Permitted: Yes  
Wet space: No  
Addition: No  
Conversion: No

## 26 Floor 3 - Bedroom

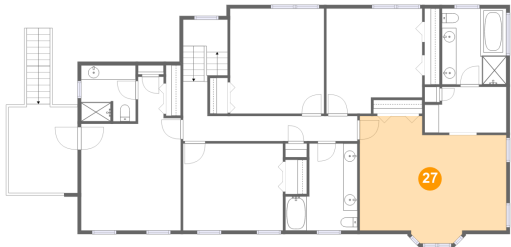


Max Dimensions: 13'11" x 12'2"  
Calculated Area: 169 sq. ft  
Included: Yes

Heated: Yes  
Finished: Yes  
Enclosed: Yes  
Contiguous: Yes  
Permitted: Yes  
Wet space: No  
Addition: No  
Conversion: No

6672 Mallard Lake Court, Roanoke, Roanoke County, Virginia,  
United States, 24018

27 Floor 3 - Primary Bedroom



Max Dimensions: 20'6" x 16'0"  
Calculated Area: 307 sq. ft  
Included: Yes

Heated: Yes  
Finished: Yes  
Enclosed: Yes  
Contiguous: Yes  
Permitted: Yes  
Wet space: No  
Addition: No  
Conversion: No

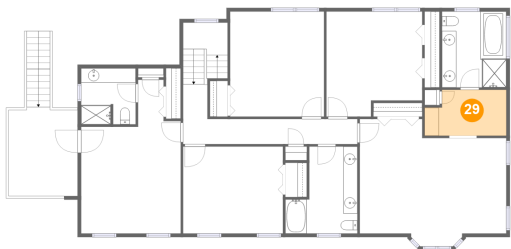
28 Floor 3 - Bath



Max Dimensions: 7'7" x 7'10"  
Calculated Area: 59 sq. ft  
Included: Yes

Heated: Yes  
Finished: Yes  
Enclosed: Yes  
Contiguous: Yes  
Permitted: Yes  
Wet space: Yes  
Addition: No  
Conversion: No

29 Floor 3 - W.I.C.

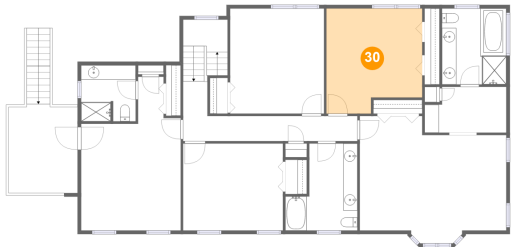


Max Dimensions: 11'5" x 6'5"  
Calculated Area: 67 sq. ft  
Included: Yes

Heated: Yes  
Finished: Yes  
Enclosed: Yes  
Contiguous: Yes  
Permitted: Yes  
Wet space: No  
Addition: No  
Conversion: No

6672 Mallard Lake Court, Roanoke, Roanoke County, Virginia,  
United States, 24018

30 Floor 3 - Bedroom



Max Dimensions: 13'5" x 14'8"  
Calculated Area: 180 sq. ft  
Included: Yes

Heated: Yes  
Finished: Yes  
Enclosed: Yes  
Contiguous: Yes  
Permitted: Yes  
Wet space: No  
Addition: No  
Conversion: No

31 Floor 3 - Deck



Max Dimensions: 9'8" x 12'5"  
Calculated Area: 152 sq. ft  
Included: No

Heated: No  
Finished: Yes  
Enclosed: No  
Contiguous: Yes  
Permitted: Yes  
Wet space: No  
Addition: No  
Conversion: No