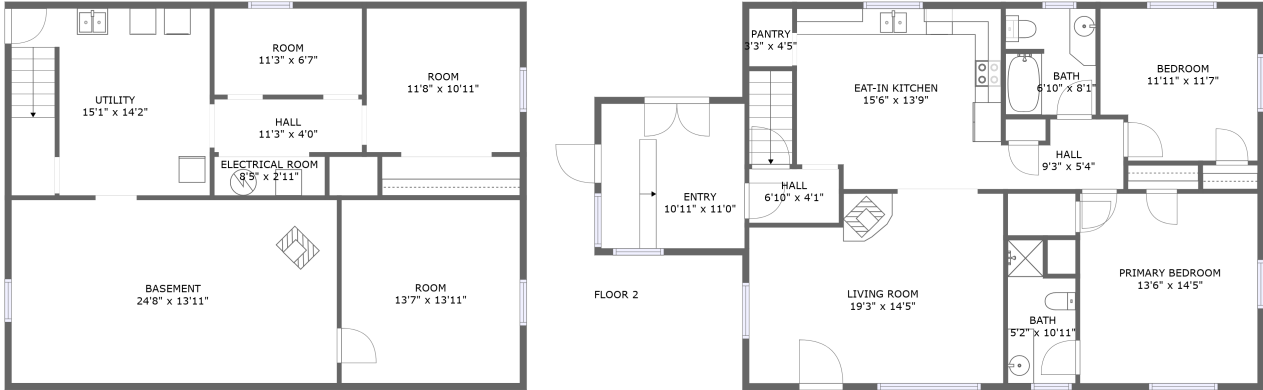


1630 WY-213, Burns, WY, US




FLOOR 1

Property Summary


 **0** garages

 **2** bedrooms

 **2** bathrooms

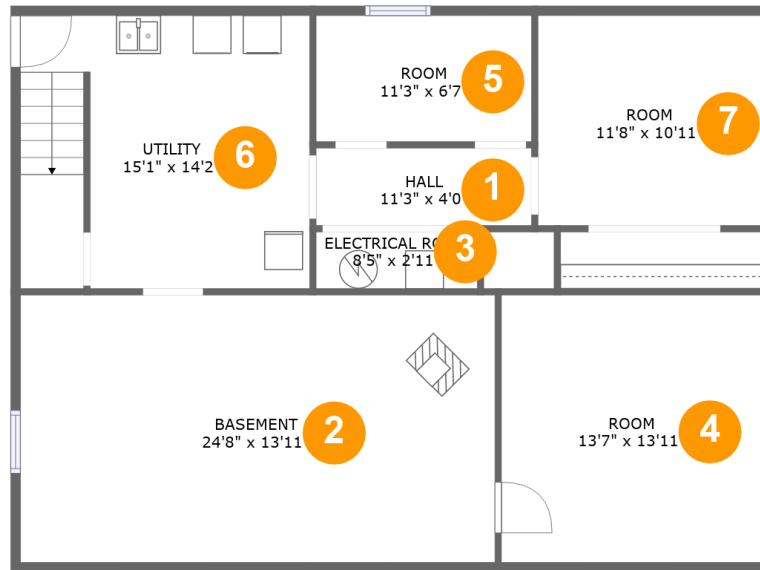
 **0** half baths

 **2** floors

 **1,316** Gross Living Area sqft

 **2,469** total sqft

1630 WY-213, Burns, WY, US



Room Dimensions

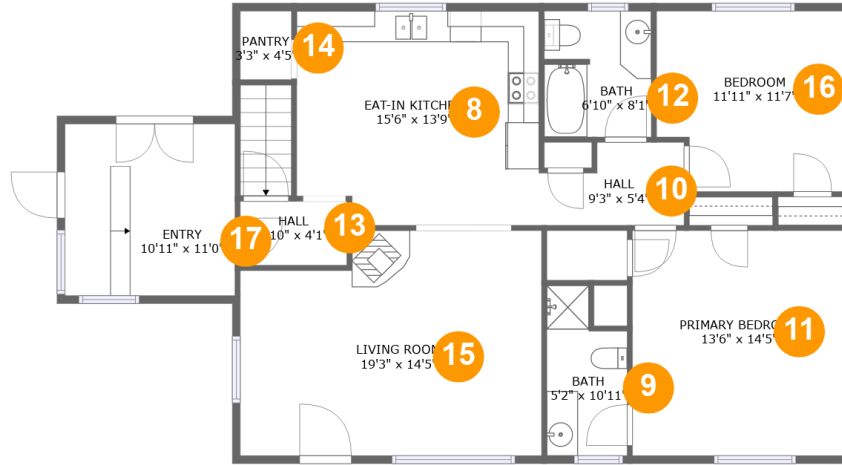
Floor 1

Total sqft: 1169

Living area: 16

#	Room name	Dimensions	Area (sqft)	Counted as Living Area
1	Hall	11'3" x 4'0"	45 sq. ft	No
2	Basement	24'8" x 13'11"	344 sq. ft	No
3	Electrical Room	8'5" x 2'11"	25 sq. ft	No
4	Room	13'7" x 13'11"	188 sq. ft	No
5	Room	11'3" x 6'7"	74 sq. ft	No
6	Utility	15'1" x 14'2"	210 sq. ft	No
7	Room	11'8" x 10'11"	127 sq. ft	No

1630 WY-213, Burns, WY, US



Room Dimensions

Floor 2

Total sqft: 1300

Living area: 1300

#	Room name	Dimensions	Area (sqft)	Counted as Living Area
8	Eat-in Kitchen	15'6" x 13'9"	206 sq. ft	Yes
9	Bath	5'2" x 10'11"	49 sq. ft	Yes
10	Hall	9'3" x 5'4"	42 sq. ft	Yes
11	Primary Bedroom	13'6" x 14'5"	194 sq. ft	Yes
12	Bath	6'10" x 8'1"	54 sq. ft	Yes
13	Hall	6'10" x 4'1"	28 sq. ft	Yes
14	Pantry	3'3" x 4'5"	14 sq. ft	Yes
15	Living Room	19'3" x 14'5"	260 sq. ft	Yes
16	Bedroom	11'11" x 11'7"	131 sq. ft	Yes
17	Entry	10'11" x 11'0"	120 sq. ft	Yes

1630 WY-213, Burns, WY, US

1 Floor 1 - Hall



Dimensions: 11'3" x 4'0"
Area: 45 sq. ft
Counted as Living Area: No

Heated: No
Finished: No
Enclosed: Yes
Contiguous: Yes
Permitted: Yes
Wet Space: No
Addition: No
Conversion: No

2 Floor 1 - Basement



Dimensions: 24'8" x 13'11"
Area: 344 sq. ft
Counted as Living Area: No

Heated: Yes
Finished: Yes
Enclosed: Yes
Contiguous: No
Permitted: Yes
Wet Space: No
Addition: No
Conversion: No

1630 WY-213, Burns, WY, US

3 Floor 1 - Electrical Room



Dimensions: 8'5" x 2'11"
Area: 25 sq. ft
Counted as Living Area: No

Heated: No
Finished: No
Enclosed: Yes
Contiguous: Yes
Permitted: Yes
Wet Space: No
Addition: No
Conversion: No

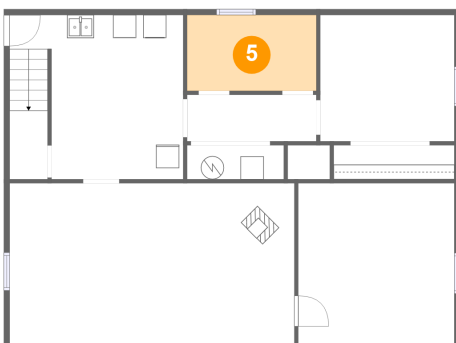
4 Floor 1 - Room



Dimensions: 13'7" x 13'11"
Area: 188 sq. ft
Counted as Living Area: No

Heated: No
Finished: No
Enclosed: Yes
Contiguous: Yes
Permitted: Yes
Wet Space: No
Addition: No
Conversion: No

5 Floor 1 - Room



Dimensions: 11'3" x 6'7"
Area: 74 sq. ft
Counted as Living Area: No

Heated: No
Finished: No
Enclosed: Yes
Contiguous: Yes
Permitted: Yes
Wet Space: No
Addition: No
Conversion: No

1630 WY-213, Burns, WY, US

6 Floor 1 - Utility



Dimensions: 15'1" x 14'2"
Area: 210 sq. ft
Counted as Living Area: No

Heated: No
Finished: No
Enclosed: Yes
Contiguous: Yes
Permitted: Yes
Wet Space: No
Addition: No
Conversion: No

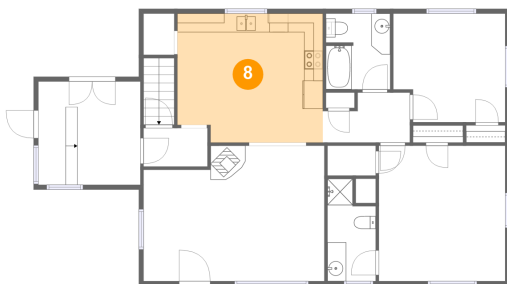
7 Floor 1 - Room



Dimensions: 11'8" x 10'11"
Area: 127 sq. ft
Counted as Living Area: No

Heated: No
Finished: No
Enclosed: Yes
Contiguous: Yes
Permitted: Yes
Wet Space: No
Addition: No
Conversion: No

8 Floor 2 - Eat-in Kitchen

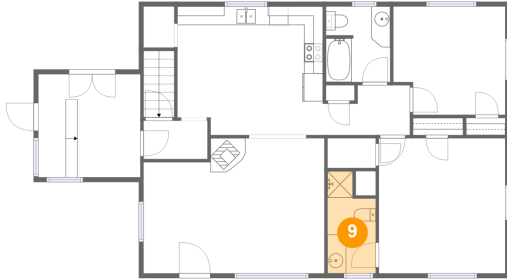


Dimensions: 15'6" x 13'9"
Area: 206 sq. ft
Counted as Living Area: Yes

Heated: Yes
Finished: Yes
Enclosed: Yes
Contiguous: Yes
Permitted: Yes
Wet Space: No
Addition: No
Conversion: No

1630 WY-213, Burns, WY, US

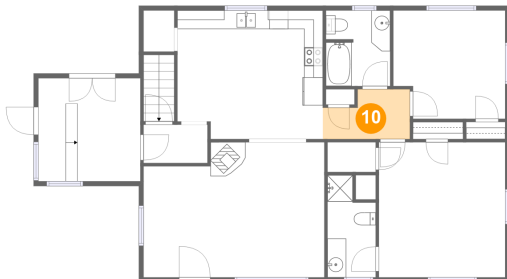
9 Floor 2 - Bath



Dimensions: 5'2" x 10'11"
Area: 49 sq. ft
Counted as Living Area:
Yes

Heated: Yes
Finished: Yes
Enclosed: Yes
Contiguous:
Yes
Permitted: Yes
Wet Space: Yes
Addition: No
Conversion: No

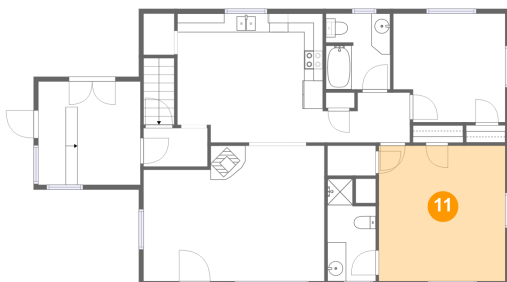
10 Floor 2 - Hall



Dimensions: 9'3" x 5'4"
Area: 42 sq. ft
Counted as Living Area:
Yes

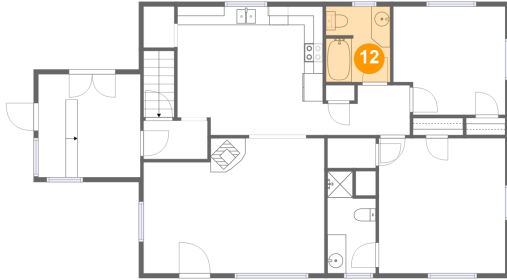
Heated: Yes
Finished: Yes
Enclosed: Yes
Contiguous:
Yes
Permitted: Yes
Wet Space: No
Addition: No
Conversion: No

11 Floor 2 - Primary Bedroom



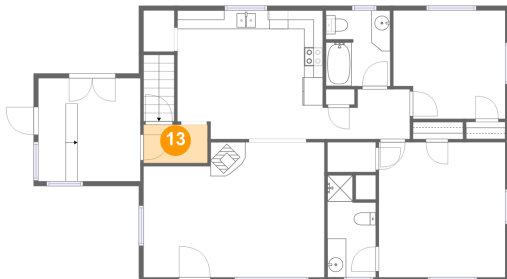
Dimensions: 13'6" x 14'5"
Area: 194 sq. ft
Counted as Living Area:
Yes

Heated: Yes
Finished: Yes
Enclosed: Yes
Contiguous:
Yes
Permitted: Yes
Wet Space: No
Addition: No
Conversion: No

1630 WY-213, Burns, WY, US**12 Floor 2 - Bath**

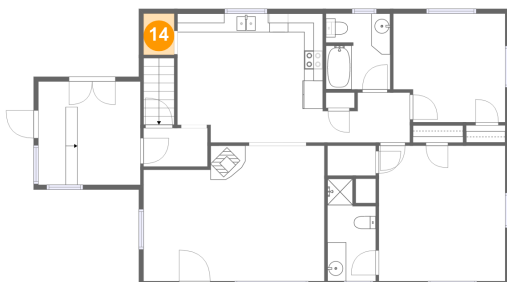
Dimensions: 6'10" x 8'1"
Area: 54 sq. ft
Counted as Living Area:
Yes

Heated: Yes
Finished: Yes
Enclosed: Yes
Contiguous:
Yes
Permitted: Yes
Wet Space: Yes
Addition: No
Conversion: No

13 Floor 2 - Hall

Dimensions: 6'10" x 4'1"
Area: 28 sq. ft
Counted as Living Area:
Yes

Heated: Yes
Finished: Yes
Enclosed: Yes
Contiguous:
Yes
Permitted: Yes
Wet Space: No
Addition: No
Conversion: No

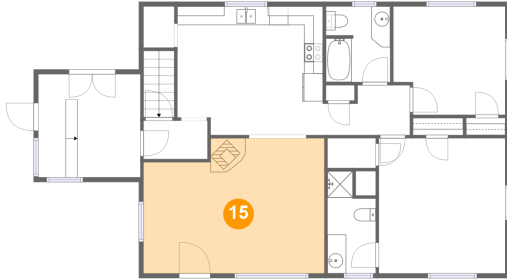
14 Floor 2 - Pantry

Dimensions: 3'3" x 4'5"
Area: 14 sq. ft
Counted as Living Area:
Yes

Heated: Yes
Finished: Yes
Enclosed: Yes
Contiguous:
Yes
Permitted: Yes
Wet Space: No
Addition: No
Conversion: No

1630 WY-213, Burns, WY, US

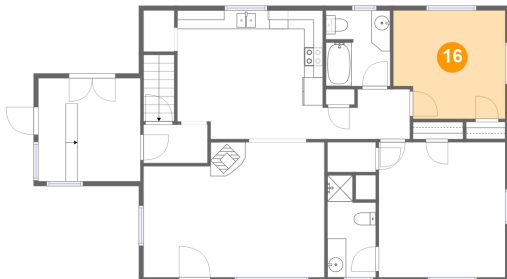
15 Floor 2 - Living Room



Dimensions: 19'3" x 14'5"
Area: 260 sq. ft
Counted as Living Area:
Yes

Heated: Yes
Finished: Yes
Enclosed: Yes
Contiguous:
Yes
Permitted: Yes
Wet Space: No
Addition: No
Conversion: No

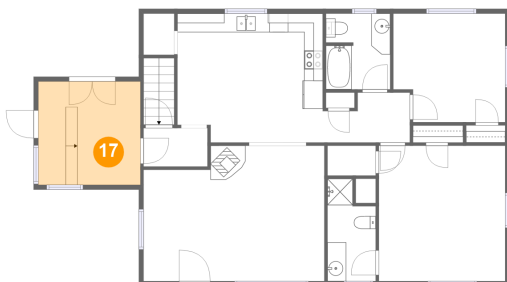
16 Floor 2 - Bedroom



Dimensions: 11'11" x 11'7"
Area: 131 sq. ft
Counted as Living Area:
Yes

Heated: Yes
Finished: Yes
Enclosed: Yes
Contiguous:
Yes
Permitted: Yes
Wet Space: No
Addition: No
Conversion: No

17 Floor 2 - Entry



Dimensions: 10'11" x 11'0"
Area: 120 sq. ft
Counted as Living Area:
Yes

Heated: Yes
Finished: Yes
Enclosed: Yes
Contiguous:
Yes
Permitted: Yes
Wet Space: No
Addition: No
Conversion: No