

Home report

112 Awol Road, Union Township, Jonestown, Lebanon County,
Pennsylvania, United States, 17038



Total Area: 2323 sq. ft
Below Ground: 0 sq. ft, Floor 2: 1364 sq. ft, Floor 3: 959 sq. ft
Excluded: Basement 983 sq. ft, Garage 558 sq. ft, Porch 264 sq. ft, Deck 253 sq. ft, Walls: 273 sq. ft

Property summary



3
Floors



4
Bedrooms



2
Bathrooms

Home report

**112 Awol Road, Union Township, Jonestown, Lebanon County,
Pennsylvania, United States, 17038**



1
Half baths



1
Garages

Home report

112 Awol Road, Union Township, Jonestown, Lebanon County,
Pennsylvania, United States, 17038



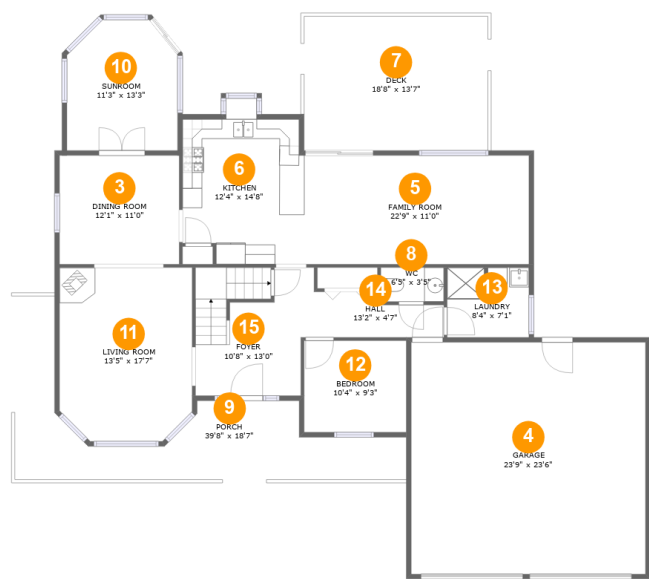
Room dimensions

Floor 1 Below ground Total:0sqft Excluded: 983sqft

#		Max Dimensions	sqft	Included
1	Outdoor	6'2" x 3'7"	22 sq. ft	No
2	Basement	35'1" x 31'6"	983 sq. ft	No

Home report

112 Awol Road, Union Township, Jonestown, Lebanon County,
Pennsylvania, United States, 17038



Room dimensions

Floor 2

Total:1364sqft

Excluded: 1075sqft

#		Max Dimensions	sqft	Included
3	Dining Room	12'1" x 11'0"	134 sq. ft	Yes
4	Garage	23'9" x 23'6"	558 sq. ft	No
5	Family Room	22'9" x 11'0"	251 sq. ft	Yes
6	Kitchen	12'4" x 14'8"	179 sq. ft	Yes
7	Deck	18'8" x 13'7"	253 sq. ft	No
8	WC	6'5" x 3'5"	22 sq. ft	Yes
9	Porch	39'8" x 18'7"	264 sq. ft	No
10	Sunroom	11'3" x 13'3"	137 sq. ft	Yes
11	Living Room	13'5" x 17'7"	227 sq. ft	Yes
12	Bedroom	10'4" x 9'3"	96 sq. ft	Yes
13	Laundry	8'4" x 7'1"	58 sq. ft	Yes

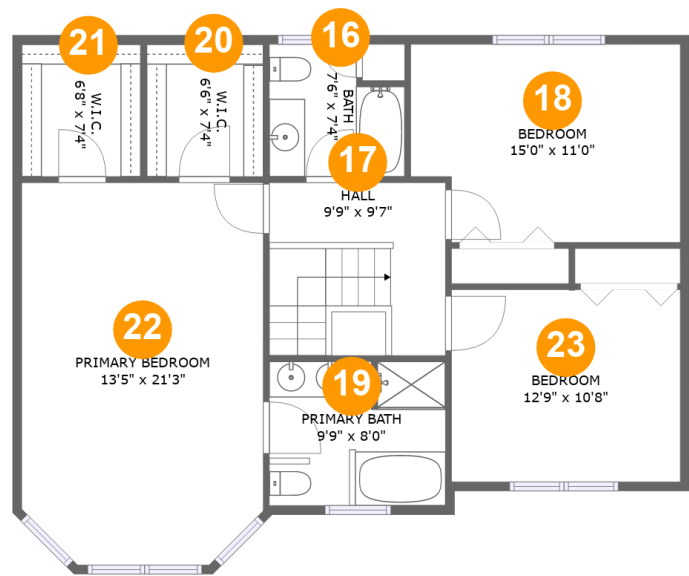
Home report

112 Awol Road, Union Township, Jonestown, Lebanon County,
Pennsylvania, United States, 17038

#		Max Dimensions	sqft	Included
14	Hall	13'2" x 4'7"	52 sq. ft	Yes
15	Foyer	10'8" x 13'0"	145 sq. ft	Yes

Home report

112 Awol Road, Union Township, Jonestown, Lebanon County,
Pennsylvania, United States, 17038

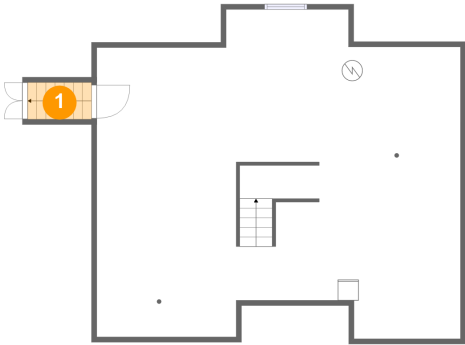


Room dimensions

Floor 3 Total:959sqft Excluded: 0sqft

#		Max Dimensions	sqft	Included
16	Bath	7'6" x 7'4"	49 sq. ft	Yes
17	Hall	9'9" x 9'7"	94 sq. ft	Yes
18	Bedroom	15'0" x 11'0"	157 sq. ft	Yes
19	Primary Bath	9'9" x 8'0"	78 sq. ft	Yes
20	W.I.C.	6'6" x 7'4"	48 sq. ft	Yes
21	W.I.C.	6'8" x 7'4"	49 sq. ft	Yes
22	Primary Bedroom	13'5" x 21'3"	277 sq. ft	Yes
23	Bedroom	12'9" x 10'8"	136 sq. ft	Yes

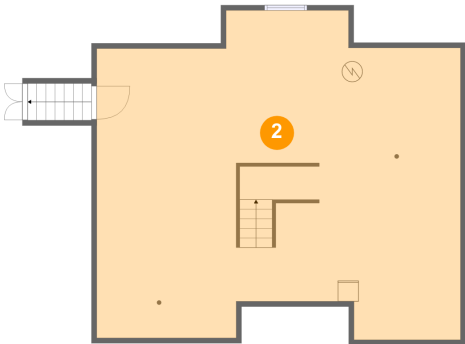
1 Floor 1 - Outdoor



Max Dimensions: 6'2" x 3'7"
Calculated Area: 22 sq. ft
Included: No

Heated: No
Finished: No
Enclosed: No
Contiguous: Yes
Permitted: No
Wet space: No
Addition: No
Conversion: No

2 Floor 1 - Basement

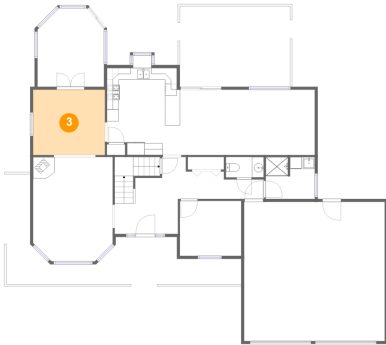


Max Dimensions: 35'1" x 31'6"
Calculated Area: 983 sq. ft
Included: No

Heated: Yes
Finished: No
Enclosed: Yes
Contiguous: Yes
Permitted: Yes
Wet space: No
Addition: No
Conversion: No

112 Awol Road, Union Township, Jonestown, Lebanon County,
Pennsylvania, United States, 17038

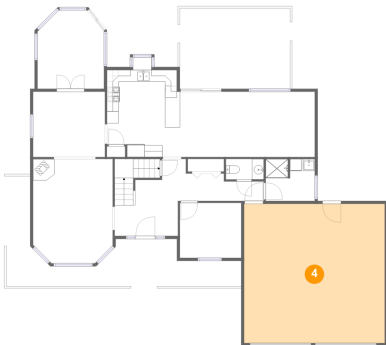
3 Floor 2 - Dining Room



Max Dimensions: 12'1" x 11'0"
Calculated Area: 134 sq. ft
Included: Yes

Heated: Yes
Finished: Yes
Enclosed: Yes
Contiguous: Yes
Permitted: Yes
Wet space: No
Addition: No
Conversion: No

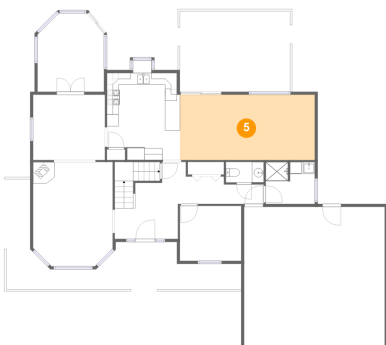
4 Floor 2 - Garage



Max Dimensions: 23'9" x 23'6"
Calculated Area: 558 sq. ft
Included: No

Heated: No
Finished: No
Enclosed: Yes
Contiguous: Yes
Permitted: Yes
Wet space: No
Addition: No
Conversion: No

5 Floor 2 - Family Room

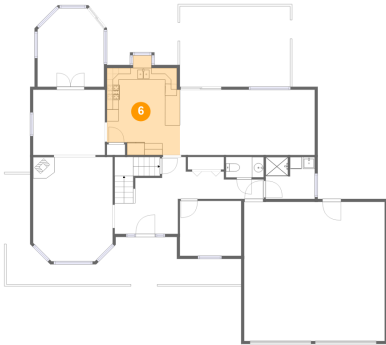


Max Dimensions: 22'9" x 11'0"
Calculated Area: 251 sq. ft
Included: Yes

Heated: Yes
Finished: Yes
Enclosed: Yes
Contiguous: Yes
Permitted: Yes
Wet space: No
Addition: No
Conversion: No

112 Awol Road, Union Township, Jonestown, Lebanon County,
Pennsylvania, United States, 17038

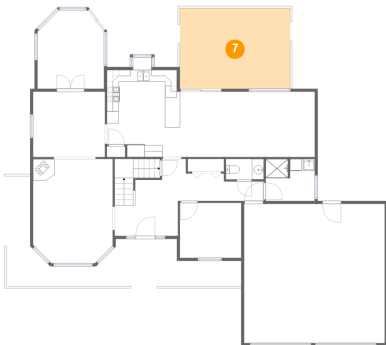
6 Floor 2 - Kitchen



Max Dimensions: 12'4" x 14'8"
Calculated Area: 179 sq. ft
Included: Yes

Heated: Yes
Finished: Yes
Enclosed: Yes
Contiguous: Yes
Permitted: Yes
Wet space: No
Addition: No
Conversion: No

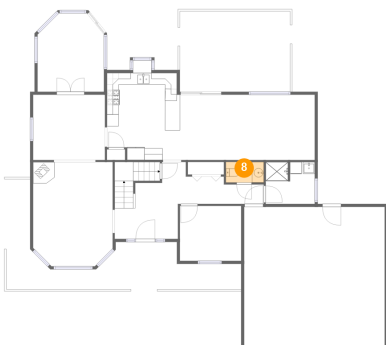
7 Floor 2 - Deck



Max Dimensions: 18'8" x 13'7"
Calculated Area: 253 sq. ft
Included: No

Heated: No
Finished: Yes
Enclosed: No
Contiguous: Yes
Permitted: Yes
Wet space: No
Addition: No
Conversion: No

8 Floor 2 - WC

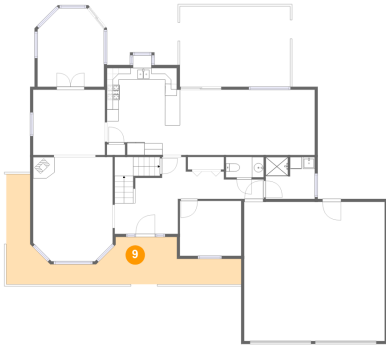


Max Dimensions: 6'5" x 3'5"
Calculated Area: 22 sq. ft
Included: Yes

Heated: Yes
Finished: Yes
Enclosed: Yes
Contiguous: Yes
Permitted: Yes
Wet space: Yes
Addition: No
Conversion: No

112 Awol Road, Union Township, Jonestown, Lebanon County,
Pennsylvania, United States, 17038

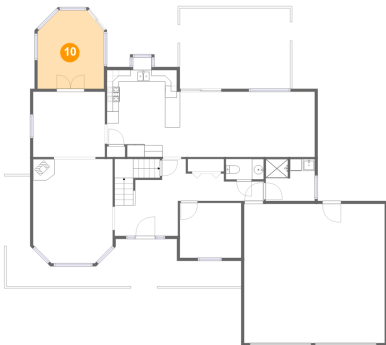
9 Floor 2 - Porch



Max Dimensions: 39'8" x 18'7"
Calculated Area: 264 sq. ft
Included: No

Heated: No
Finished: Yes
Enclosed: No
Contiguous: Yes
Permitted: Yes
Wet space: No
Addition: No
Conversion: No

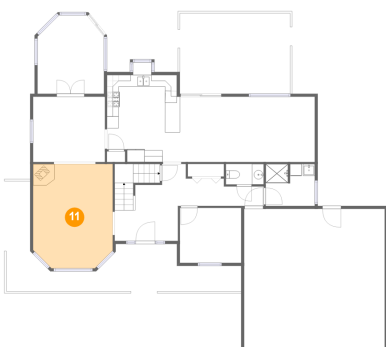
10 Floor 2 - Sunroom



Max Dimensions: 11'3" x 13'3"
Calculated Area: 137 sq. ft
Included: Yes

Heated: Yes
Finished: Yes
Enclosed: Yes
Contiguous: Yes
Permitted: Yes
Wet space: No
Addition: No
Conversion: No

11 Floor 2 - Living Room

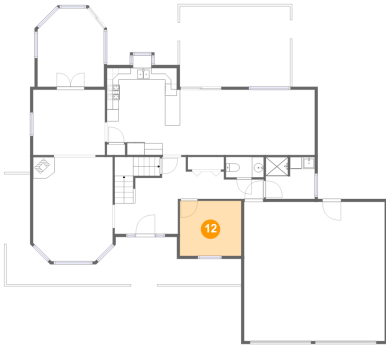


Max Dimensions: 13'5" x 17'7"
Calculated Area: 227 sq. ft
Included: Yes

Heated: Yes
Finished: Yes
Enclosed: Yes
Contiguous: Yes
Permitted: Yes
Wet space: No
Addition: No
Conversion: No

112 Awol Road, Union Township, Jonestown, Lebanon County,
Pennsylvania, United States, 17038

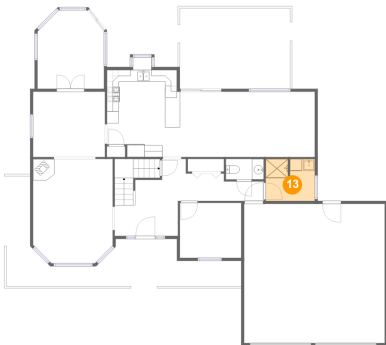
12 Floor 2 - Bedroom



Max Dimensions: 10'4" x 9'3"
Calculated Area: 96 sq. ft
Included: Yes

Heated: Yes
Finished: Yes
Enclosed: Yes
Contiguous: Yes
Permitted: Yes
Wet space: No
Addition: No
Conversion: No

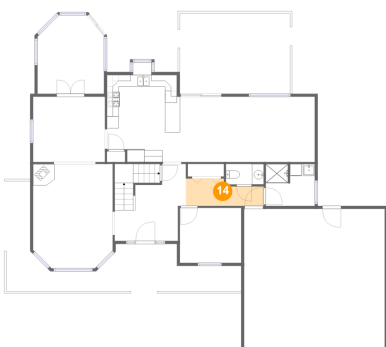
13 Floor 2 - Laundry



Max Dimensions: 8'4" x 7'1"
Calculated Area: 58 sq. ft
Included: Yes

Heated: Yes
Finished: Yes
Enclosed: Yes
Contiguous: Yes
Permitted: Yes
Wet space: No
Addition: No
Conversion: No

14 Floor 2 - Hall

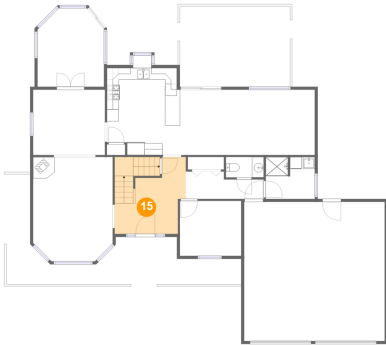


Max Dimensions: 13'2" x 4'7"
Calculated Area: 52 sq. ft
Included: Yes

Heated: Yes
Finished: Yes
Enclosed: Yes
Contiguous: Yes
Permitted: Yes
Wet space: No
Addition: No
Conversion: No

112 Awol Road, Union Township, Jonestown, Lebanon County,
Pennsylvania, United States, 17038

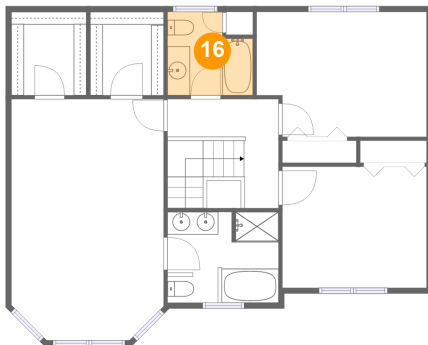
15 Floor 2 - Foyer



Max Dimensions: 10'8" x 13'0"
Calculated Area: 145 sq. ft
Included: Yes

Heated: Yes
Finished: Yes
Enclosed: Yes
Contiguous: Yes
Permitted: Yes
Wet space: No
Addition: No
Conversion: No

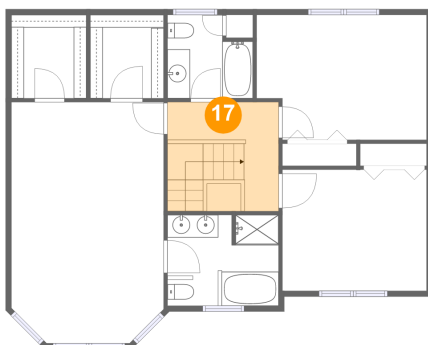
16 Floor 3 - Bath



Max Dimensions: 7'6" x 7'4"
Calculated Area: 49 sq. ft
Included: Yes

Heated: Yes
Finished: Yes
Enclosed: Yes
Contiguous: Yes
Permitted: Yes
Wet space: Yes
Addition: No
Conversion: No

17 Floor 3 - Hall

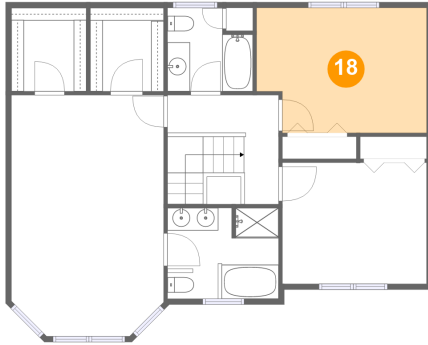


Max Dimensions: 9'9" x 9'7"
Calculated Area: 94 sq. ft
Included: Yes

Heated: Yes
Finished: Yes
Enclosed: Yes
Contiguous: Yes
Permitted: Yes
Wet space: No
Addition: No
Conversion: No

112 Awol Road, Union Township, Jonestown, Lebanon County,
Pennsylvania, United States, 17038

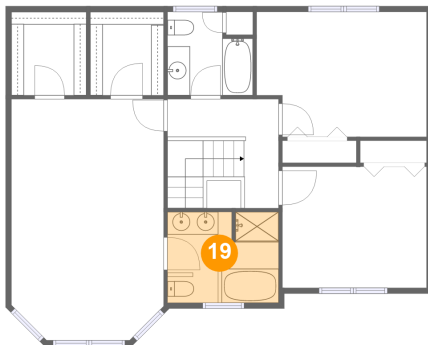
18 Floor 3 - Bedroom



Max Dimensions: 15'0" x 11'0"
Calculated Area: 157 sq. ft
Included: Yes

Heated: Yes
Finished: Yes
Enclosed: Yes
Contiguous: Yes
Permitted: Yes
Wet space: No
Addition: No
Conversion: No

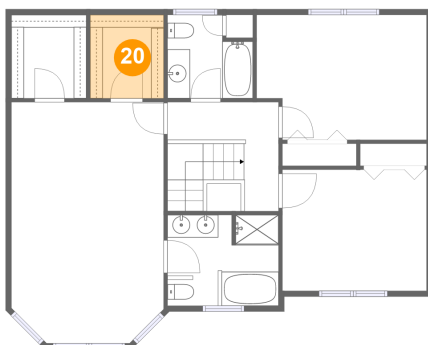
19 Floor 3 - Primary Bath



Max Dimensions: 9'9" x 8'0"
Calculated Area: 78 sq. ft
Included: Yes

Heated: Yes
Finished: Yes
Enclosed: Yes
Contiguous: Yes
Permitted: Yes
Wet space: Yes
Addition: No
Conversion: No

20 Floor 3 - W.I.C.



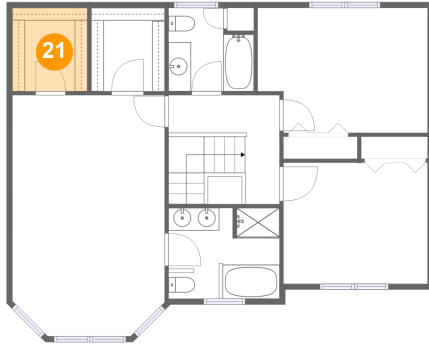
Max Dimensions: 6'6" x 7'4"
Calculated Area: 48 sq. ft
Included: Yes

Heated: Yes
Finished: Yes
Enclosed: Yes
Contiguous: Yes
Permitted: Yes
Wet space: No
Addition: No
Conversion: No

Home report

112 Awol Road, Union Township, Jonestown, Lebanon County,
Pennsylvania, United States, 17038

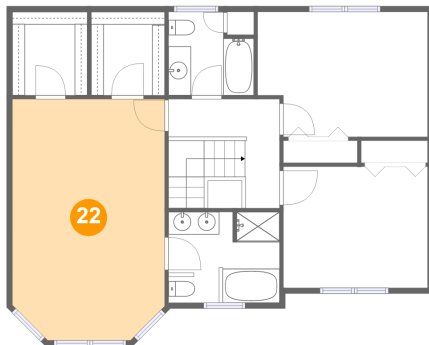
21 Floor 3 - W.I.C.



Max Dimensions: 6'8" x 7'4"
Calculated Area: 49 sq. ft
Included: Yes

Heated: Yes
Finished: Yes
Enclosed: Yes
Contiguous: Yes
Permitted: Yes
Wet space: No
Addition: No
Conversion: No

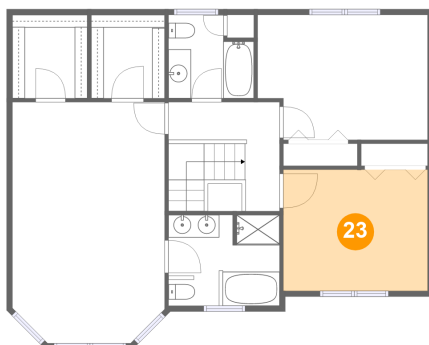
22 Floor 3 - Primary Bedroom



Max Dimensions: 13'5" x 21'3"
Calculated Area: 277 sq. ft
Included: Yes

Heated: Yes
Finished: Yes
Enclosed: Yes
Contiguous: Yes
Permitted: Yes
Wet space: No
Addition: No
Conversion: No

23 Floor 3 - Bedroom



Max Dimensions: 12'9" x 10'8"
Calculated Area: 136 sq. ft
Included: Yes

Heated: Yes
Finished: Yes
Enclosed: Yes
Contiguous: Yes
Permitted: Yes
Wet space: No
Addition: No
Conversion: No