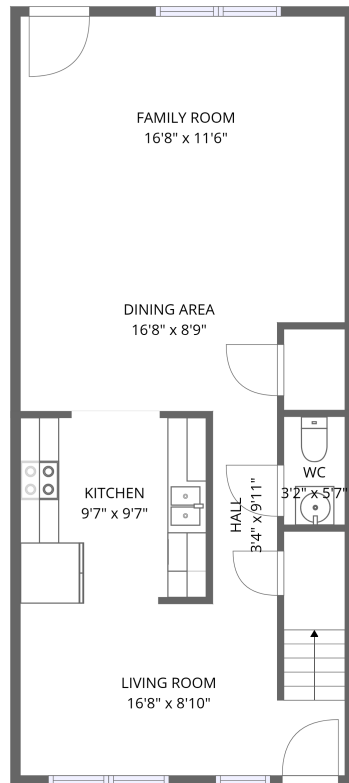
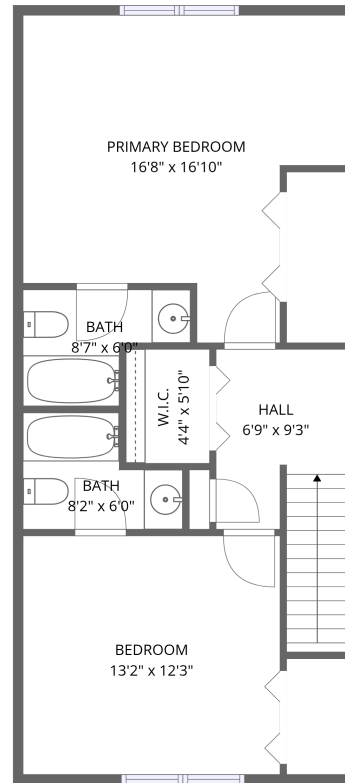


Home report

775 Casey Ln, Maryville, TN, US



FLOOR 1



FLOOR 2

**Total Area: 1300 sq. ft**

Floor 1: 650 sq. ft, Floor 2: 650 sq. ft

Excluded: Walls: 72 sq. ft

## Property summary

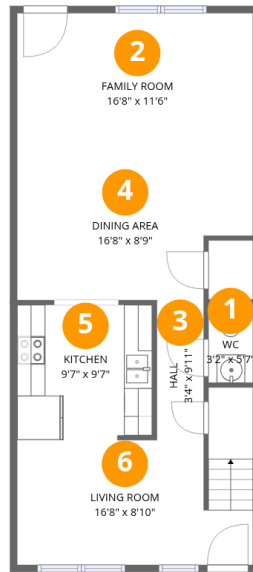


Scan captured on Wed, 24 Sep 2025 13:19:43 GMT

FLOOR PLAN CREATED BY CUBICASA APP. MEASUREMENTS ARE CONSIDERED RELIABLE BUT NOT ACCURATE.

Home report

775 Casey Ln, Maryville, TN, US



## Room dimensions

Floor 1

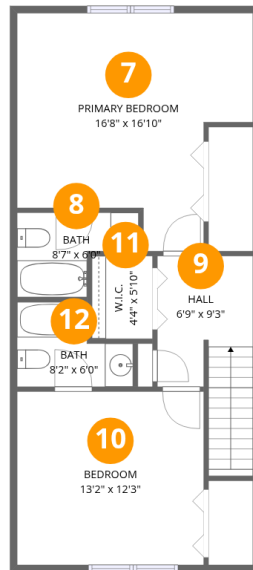
Total:650sqft

Excluded: 0sqft

#		Max Dimensions	sqft	Included
1	WC	3'2" x 5'7"	17 sq. ft	Yes
2	Family Room	16'8" x 11'6"	192 sq. ft	Yes
3	Hall	3'4" x 9'11"	33 sq. ft	Yes
4	Dining Area	16'8" x 8'9"	130 sq. ft	Yes
5	Kitchen	9'7" x 9'7"	90 sq. ft	Yes
6	Living Room	16'8" x 8'10"	157 sq. ft	Yes

Home report

775 Casey Ln, Maryville, TN, US



## Room dimensions

Floor 2

Total:650sqft

Excluded: 0sqft

#		Max Dimensions	sqft	Included
7	Primary Bedroom	16'8" x 16'10"	221 sq. ft	Yes
8	Bath	8'7" x 6'0"	39 sq. ft	Yes
9	Hall	6'9" x 9'3"	81 sq. ft	Yes
10	Bedroom	13'2" x 12'3"	162 sq. ft	Yes
11	W.I.C.	4'4" x 5'10"	25 sq. ft	Yes
12	Bath	8'2" x 6'0"	40 sq. ft	Yes

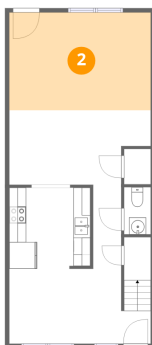
## 1 Floor 1 - WC



**Max Dimensions:** 3'2" x 5'7"  
**Calculated Area:** 17 sq. ft  
**Included:** Yes

**Heated:** Yes  
**Finished:** Yes  
**Enclosed:** Yes  
**Contiguous:** Yes  
**Permitted:** Yes  
**Wet space:** Yes  
**Addition:** No  
**Conversion:** No

## 2 Floor 1 - Family Room



**Max Dimensions:** 16'8" x 11'6"  
**Calculated Area:** 192 sq. ft  
**Included:** Yes

**Heated:** Yes  
**Finished:** Yes  
**Enclosed:** Yes  
**Contiguous:** Yes  
**Permitted:** Yes  
**Wet space:** No  
**Addition:** No  
**Conversion:** No

### 3 Floor 1 - Hall



Max Dimensions: 3'4" x 9'11"  
Calculated Area: 33 sq. ft  
Included: Yes

Heated: Yes  
Finished: Yes  
Enclosed: Yes  
Contiguous: Yes  
Permitted: Yes  
Wet space: No  
Addition: No  
Conversion: No

### 4 Floor 1 - Dining Area



Max Dimensions: 16'8" x 8'9"  
Calculated Area: 130 sq. ft  
Included: Yes

Heated: Yes  
Finished: Yes  
Enclosed: Yes  
Contiguous: Yes  
Permitted: Yes  
Wet space: No  
Addition: No  
Conversion: No

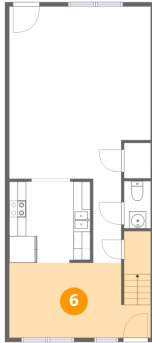
### 5 Floor 1 - Kitchen



Max Dimensions: 9'7" x 9'7"  
Calculated Area: 90 sq. ft  
Included: Yes

Heated: Yes  
Finished: Yes  
Enclosed: Yes  
Contiguous: Yes  
Permitted: Yes  
Wet space: No  
Addition: No  
Conversion: No

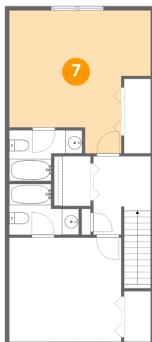
## 6 Floor 1 - Living Room



Max Dimensions: 16'8" x 8'10"  
Calculated Area: 157 sq. ft  
Included: Yes

Heated: Yes  
Finished: Yes  
Enclosed: Yes  
Contiguous: Yes  
Permitted: Yes  
Wet space: No  
Addition: No  
Conversion: No

## 7 Floor 2 - Primary Bedroom



Max Dimensions: 16'8" x 16'10"  
Calculated Area: 221 sq. ft  
Included: Yes

Heated: Yes  
Finished: Yes  
Enclosed: Yes  
Contiguous: Yes  
Permitted: Yes  
Wet space: No  
Addition: No  
Conversion: No

## 8 Floor 2 - Bath



Max Dimensions: 8'7" x 6'0"  
Calculated Area: 39 sq. ft  
Included: Yes

Heated: Yes  
Finished: Yes  
Enclosed: Yes  
Contiguous: Yes  
Permitted: Yes  
Wet space: Yes  
Addition: No  
Conversion: No

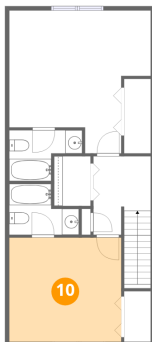
## 9 Floor 2 - Hall



Max Dimensions: 6'9" x 9'3"  
Calculated Area: 81 sq. ft  
Included: Yes

Heated: Yes  
Finished: Yes  
Enclosed: Yes  
Contiguous: Yes  
Permitted: Yes  
Wet space: No  
Addition: No  
Conversion: No

## 10 Floor 2 - Bedroom



Max Dimensions: 13'2" x 12'3"  
Calculated Area: 162 sq. ft  
Included: Yes

Heated: Yes  
Finished: Yes  
Enclosed: Yes  
Contiguous: Yes  
Permitted: Yes  
Wet space: No  
Addition: No  
Conversion: No

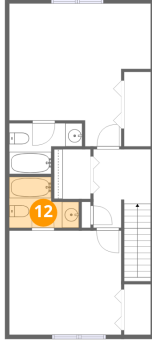
## 11 Floor 2 - W.I.C.



Max Dimensions: 4'4" x 5'10"  
Calculated Area: 25 sq. ft  
Included: Yes

Heated: Yes  
Finished: Yes  
Enclosed: Yes  
Contiguous: Yes  
Permitted: Yes  
Wet space: No  
Addition: No  
Conversion: No

**12** Floor 2 - Bath



**Max Dimensions:** 8'2" x 6'0"  
**Calculated Area:** 40 sq. ft  
**Included:** Yes

**Heated:** Yes  
**Finished:** Yes  
**Enclosed:** Yes  
**Contiguous:** Yes  
**Permitted:** Yes  
**Wet space:** Yes  
**Addition:** No  
**Conversion:** No