

60-2729 158 Street

Surrey, BC V3Z 1P4

Lower Level Area:	78 SQ.FT.
Main Level Area:	655 SQ.FT.
Upper Level Area:	705 SQ.FT.
Total Area	1,438 SQ.FT.
Garage Area:	507 SQ.FT.

3



BEDROOMS

2

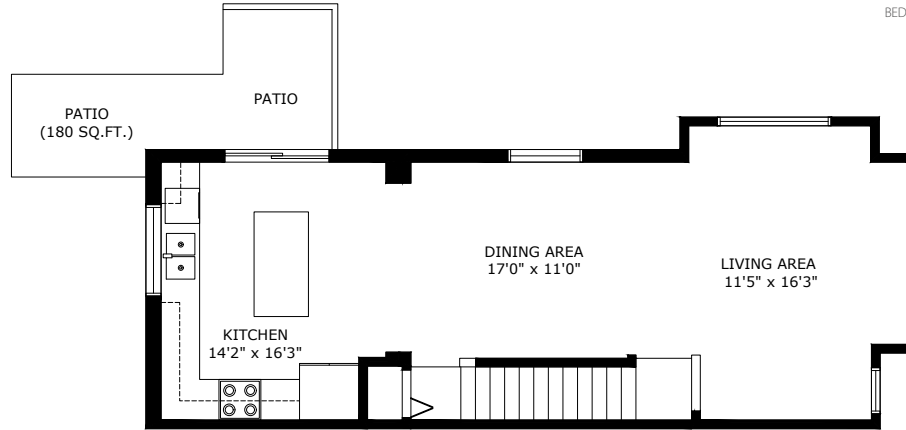


BATHROOMS

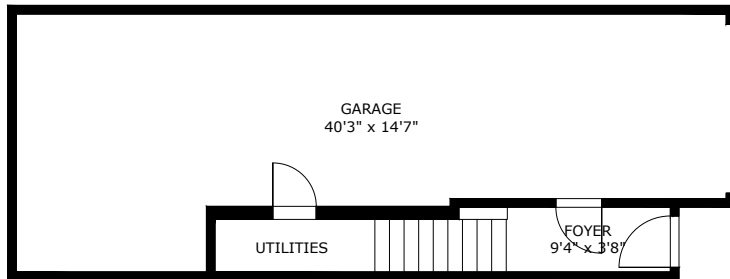
1,438



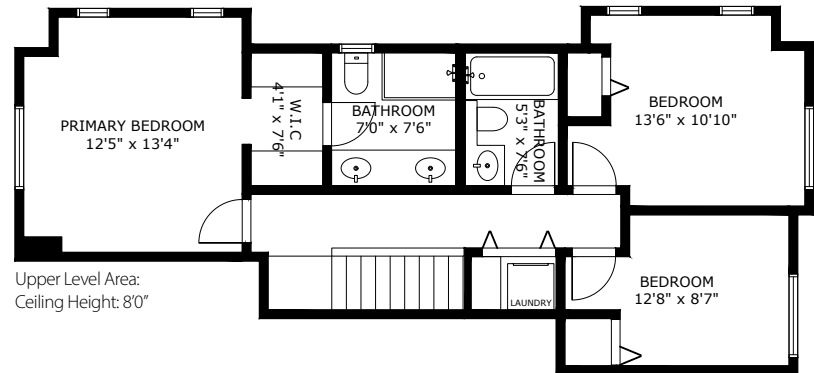
TOTAL SQ.FT.



Main Level Area:
Ceiling Height: 8'0"



Lower Level Area:
Ceiling Height: 8'0"



Upper Level Area:
Ceiling Height: 8'0"

2729 158 ST SURREY BC V3Z 1P4

Measurements are approximate and may not be to scale. Gross measurements provided by agent.
The floor plan illustration is not suitable for construction/architectural purposes.
This communication is not intended to cause or induce breach of an existing agency agreement

3D IMMERSIVE
Tours Photos Floor Plans

Professionally measured by 3D Immersive Marketing Ltd.

Lead Floor Planner: *Sara Alexander*
Quality Assurance: *Dianne Graham*