

State of Texas,  
County of Comal.  
I, **James W. Taylor**, County Clerk, do hereby certify that the foregoing is a true and correct copy of the original as recorded in my office on the 27th day of September, 1924.  
Witness my hand and seal of office this 27th day of September, 1924.

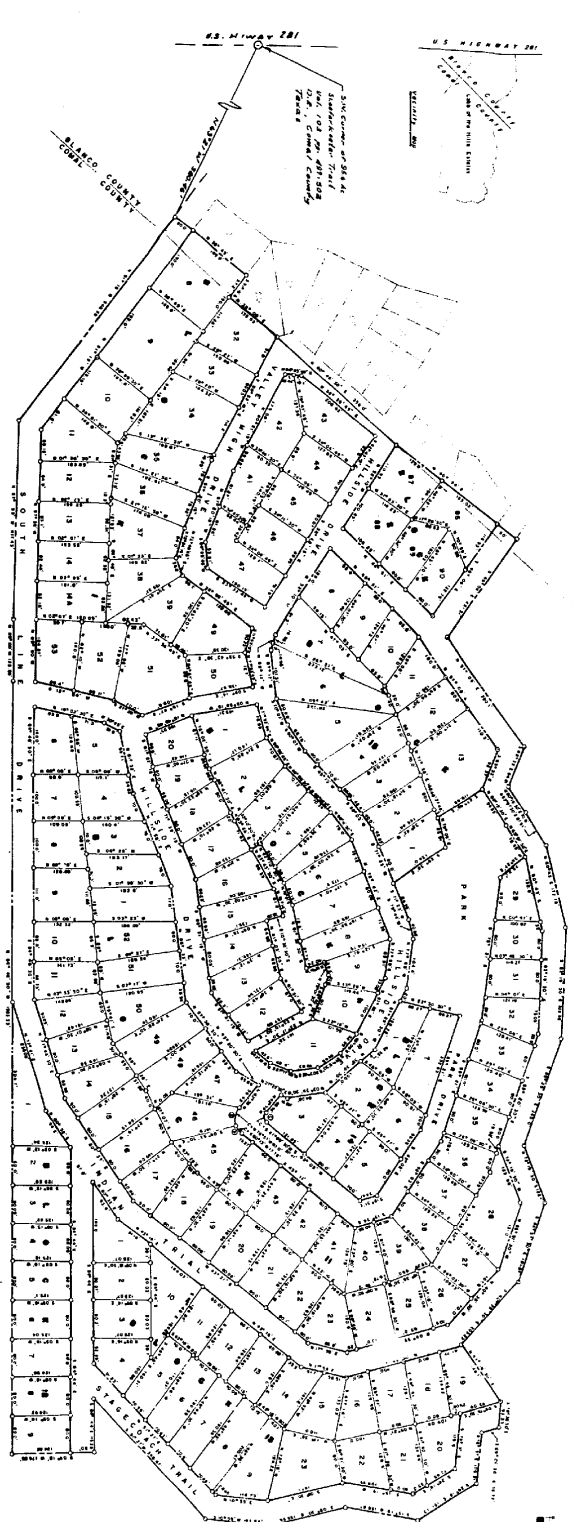
**M. R. Bennett**  
Surveyor  
*James W. Taylor*

State of Texas,  
County of Comal.  
I, **James W. Taylor**, County Clerk, do hereby certify that the foregoing is a true and correct copy of the original as recorded in my office on the 27th day of September, 1924.  
Witness my hand and seal of office this 27th day of September, 1924.

**James W. Taylor**  
County Clerk  
*James W. Taylor*

State of Texas,  
County of Comal.  
I, **James W. Taylor**, County Clerk, do hereby certify that the foregoing is a true and correct copy of the original as recorded in my office on the 27th day of September, 1924.  
Witness my hand and seal of office this 27th day of September, 1924.

**James W. Taylor**  
County Clerk  
*James W. Taylor*



State of Texas,  
County of Comal.  
I, **James W. Taylor**, County Clerk, do hereby certify that the foregoing is a true and correct copy of the original as recorded in my office on the 27th day of September, 1924.  
Witness my hand and seal of office this 27th day of September, 1924.

**James W. Taylor**  
County Clerk  
*James W. Taylor*

State of Texas,  
County of Comal.  
I, **James W. Taylor**, County Clerk, do hereby certify that the foregoing is a true and correct copy of the original as recorded in my office on the 27th day of September, 1924.  
Witness my hand and seal of office this 27th day of September, 1924.

**James W. Taylor**  
County Clerk  
*James W. Taylor*

**LAKE OF THE HILLS ESTATES**  
COMAL COUNTY, TEXAS  
362.27 ACRES  
AS SHOWN ON THE MAP

FRANCIS S. WOODRUFF REGISTERED SURV. NO. 40  
REGISTERED SURV. NO. 40

**FILED FOR RECORD**  
The 27th day of *Sept*, 1924  
*106842*  
**James W. Taylor**  
County Clerk Comal County

