

Home report

75 Key Lane, Berkeley Springs, Morgan County, West Virginia,
United States, 25411

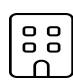


Total Area: 2110 sq. ft

Below Ground: 0 sq. ft, Floor 2: 2110 sq. ft


Excluded: Storage 184 sq. ft, Basement 1708 sq. ft, Undefined 59 sq. ft, Porch 203 sq. ft, Patio 715 sq. ft, Walls: 248 sq. ft

Property summary

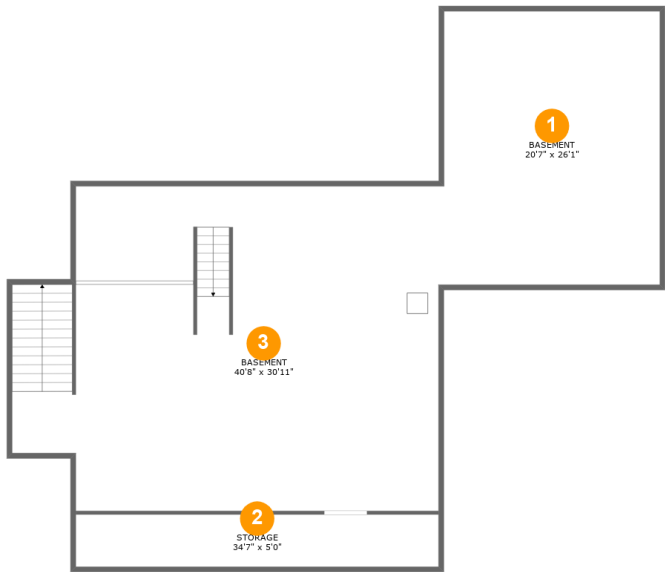
 **2** Floors

 **3** Bedrooms

 **2** Bathrooms

 **1** Garages

75 Key Lane, Berkeley Springs, Morgan County, West Virginia,
United States, 25411



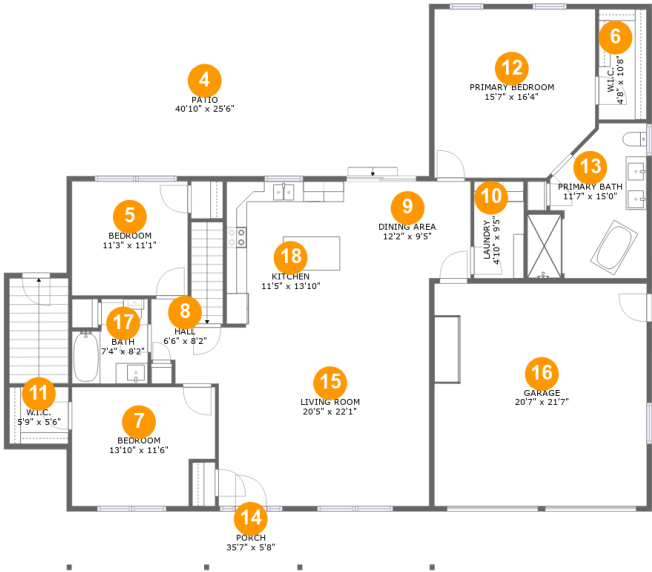
Room dimensions

Floor 1 Below ground Total:0sqft Excluded: 1892sqft

#		Max Dimensions	sqft	Included
1	Basement	20'7" x 26'1"	536 sq. ft	No
2	Storage	34'7" x 5'0"	172 sq. ft	No
3	Basement	40'8" x 30'11"	1169 sq. ft	No

Home report

75 Key Lane, Berkeley Springs, Morgan County, West Virginia,
United States, 25411



Room dimensions

Floor 2 Total:2110sqft Excluded: 977sqft

#		Max Dimensions	sqft	Included
4	Patio	40'10" x 25'6"	715 sq. ft	No
5	Bedroom	11'3" x 11'1"	124 sq. ft	Yes
6	W.I.C.	4'8" x 10'8"	50 sq. ft	Yes
7	Bedroom	13'10" x 11'6"	148 sq. ft	Yes
8	Hall	6'6" x 8'2"	40 sq. ft	Yes
9	Dining Area	12'2" x 9'5"	114 sq. ft	Yes
10	Laundry	4'10" x 9'5"	45 sq. ft	Yes
11	W.I.C.	5'9" x 5'6"	32 sq. ft	Yes
12	Primary Bedroom	15'7" x 16'4"	243 sq. ft	Yes
13	Primary Bath	11'7" x 15'0"	140 sq. ft	Yes
14	Porch	35'7" x 5'8"	203 sq. ft	No

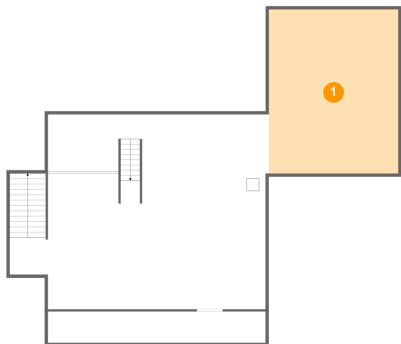
Home report

**75 Key Lane, Berkeley Springs, Morgan County, West Virginia,
United States, 25411**

#		Max Dimensions	sqft	Included
15	Living Room	20'5" x 22'1"	395 sq. ft	Yes
16	Garage	20'7" x 21'7"	443 sq. ft	Yes
17	Bath	7'4" x 8'2"	51 sq. ft	Yes
18	Kitchen	11'5" x 13'10"	158 sq. ft	Yes

75 Key Lane, Berkeley Springs, Morgan County, West Virginia,
United States, 25411

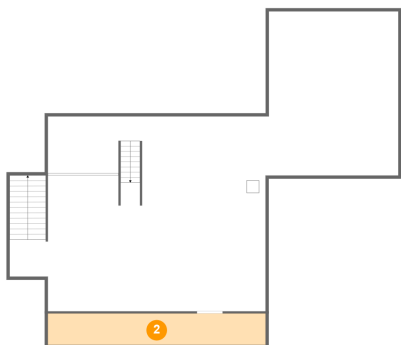
1 Floor 1 - Basement



Max Dimensions: 20'7" x 26'1"
Calculated Area: 536 sq. ft
Included: No

Heated: Yes
Finished: No
Enclosed: Yes
Contiguous: Yes
Permitted: Yes
Wet space: No
Addition: No
Conversion: No

2 Floor 1 - Storage

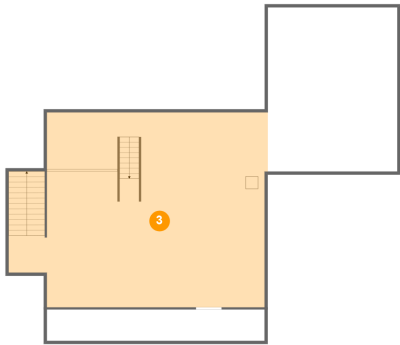


Max Dimensions: 34'7" x 5'0"
Calculated Area: 172 sq. ft
Included: No

Heated: No
Finished: No
Enclosed: No
Contiguous: Yes
Permitted: Yes
Wet space: No
Addition: No
Conversion: No

75 Key Lane, Berkeley Springs, Morgan County, West Virginia,
United States, 25411

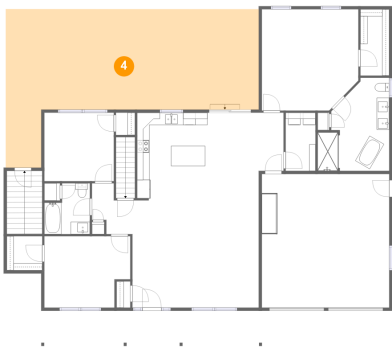
3 Floor 1 - Basement



Max Dimensions: 40'8" x 30'11"
Calculated Area: 1169 sq. ft
Included: No

Heated: Yes
Finished: No
Enclosed: Yes
Contiguous: Yes
Permitted: Yes
Wet space: No
Addition: No
Conversion: No

4 Floor 2 - Patio



Max Dimensions: 40'10" x 25'6"
Calculated Area: 715 sq. ft
Included: No

Heated: No
Finished: Yes
Enclosed: No
Contiguous: Yes
Permitted: Yes
Wet space: No
Addition: No
Conversion: No

5 Floor 2 - Bedroom



Max Dimensions: 11'3" x 11'1"
Calculated Area: 124 sq. ft
Included: Yes

Heated: Yes
Finished: Yes
Enclosed: Yes
Contiguous: Yes
Permitted: Yes
Wet space: No
Addition: No
Conversion: No

75 Key Lane, Berkeley Springs, Morgan County, West Virginia,
United States, 25411

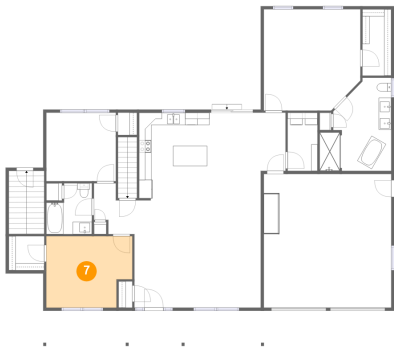
6 Floor 2 - W.I.C.



Max Dimensions: 4'8" x 10'8"
Calculated Area: 50 sq. ft
Included: Yes

Heated: Yes
Finished: Yes
Enclosed: Yes
Contiguous: Yes
Permitted: Yes
Wet space: No
Addition: No
Conversion: No

7 Floor 2 - Bedroom



Max Dimensions: 13'10" x 11'6"
Calculated Area: 148 sq. ft
Included: Yes

Heated: Yes
Finished: Yes
Enclosed: Yes
Contiguous: Yes
Permitted: Yes
Wet space: No
Addition: No
Conversion: No

8 Floor 2 - Hall

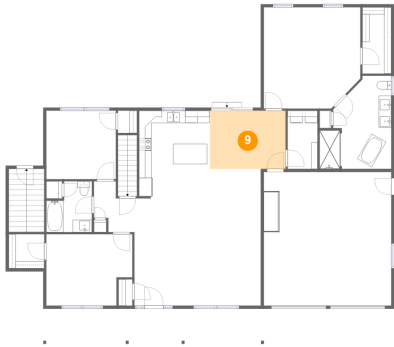


Max Dimensions: 6'6" x 8'2"
Calculated Area: 40 sq. ft
Included: Yes

Heated: Yes
Finished: Yes
Enclosed: Yes
Contiguous: Yes
Permitted: Yes
Wet space: No
Addition: No
Conversion: No

75 Key Lane, Berkeley Springs, Morgan County, West Virginia,
United States, 25411

9 Floor 2 - Dining Area



Max Dimensions: 12'2" x 9'5"
Calculated Area: 114 sq. ft
Included: Yes

Heated: Yes
Finished: Yes
Enclosed: Yes
Contiguous: Yes
Permitted: Yes
Wet space: No
Addition: No
Conversion: No

10 Floor 2 - Laundry



Max Dimensions: 4'10" x 9'5"
Calculated Area: 45 sq. ft
Included: Yes

Heated: Yes
Finished: Yes
Enclosed: Yes
Contiguous: Yes
Permitted: Yes
Wet space: No
Addition: No
Conversion: No

11 Floor 2 - W.I.C.

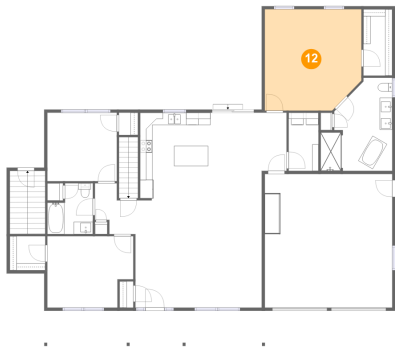


Max Dimensions: 5'9" x 5'6"
Calculated Area: 32 sq. ft
Included: Yes

Heated: Yes
Finished: Yes
Enclosed: Yes
Contiguous: Yes
Permitted: Yes
Wet space: No
Addition: No
Conversion: No

75 Key Lane, Berkeley Springs, Morgan County, West Virginia,
United States, 25411

12 Floor 2 - Primary Bedroom



Max Dimensions: 15'7" x 16'4"
Calculated Area: 243 sq. ft
Included: Yes

Heated: Yes
Finished: Yes
Enclosed: Yes
Contiguous: Yes
Permitted: Yes
Wet space: No
Addition: No
Conversion: No

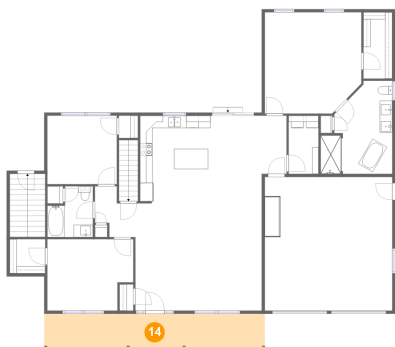
13 Floor 2 - Primary Bath



Max Dimensions: 11'7" x 15'0"
Calculated Area: 140 sq. ft
Included: Yes

Heated: Yes
Finished: Yes
Enclosed: Yes
Contiguous: Yes
Permitted: Yes
Wet space: Yes
Addition: No
Conversion: No

14 Floor 2 - Porch



Max Dimensions: 35'7" x 5'8"
Calculated Area: 203 sq. ft
Included: No

Heated: No
Finished: Yes
Enclosed: No
Contiguous: Yes
Permitted: Yes
Wet space: No
Addition: No
Conversion: No

75 Key Lane, Berkeley Springs, Morgan County, West Virginia,
United States, 25411

15 Floor 2 - Living Room



Max Dimensions: 20'5" x 22'1"
Calculated Area: 395 sq. ft
Included: Yes

Heated: Yes
Finished: Yes
Enclosed: Yes
Contiguous: Yes
Permitted: Yes
Wet space: No
Addition: No
Conversion: No

16 Floor 2 - Garage



Max Dimensions: 20'7" x 21'7"
Calculated Area: 443 sq. ft
Included: No

Heated: No
Finished: Yes
Enclosed: Yes
Contiguous: Yes
Permitted: Yes
Wet space: No
Addition: No
Conversion: No

17 Floor 2 - Bath



Max Dimensions: 7'4" x 8'2"
Calculated Area: 51 sq. ft
Included: Yes

Heated: Yes
Finished: Yes
Enclosed: Yes
Contiguous: Yes
Permitted: Yes
Wet space: Yes
Addition: No
Conversion: No

75 Key Lane, Berkeley Springs, Morgan County, West Virginia,
United States, 25411

18 Floor 2 - Kitchen



Max Dimensions: 11'5" x 13'10"
Calculated Area: 158 sq. ft
Included: Yes

Heated: Yes
Finished: Yes
Enclosed: Yes
Contiguous: Yes
Permitted: Yes
Wet space: No
Addition: No
Conversion: No