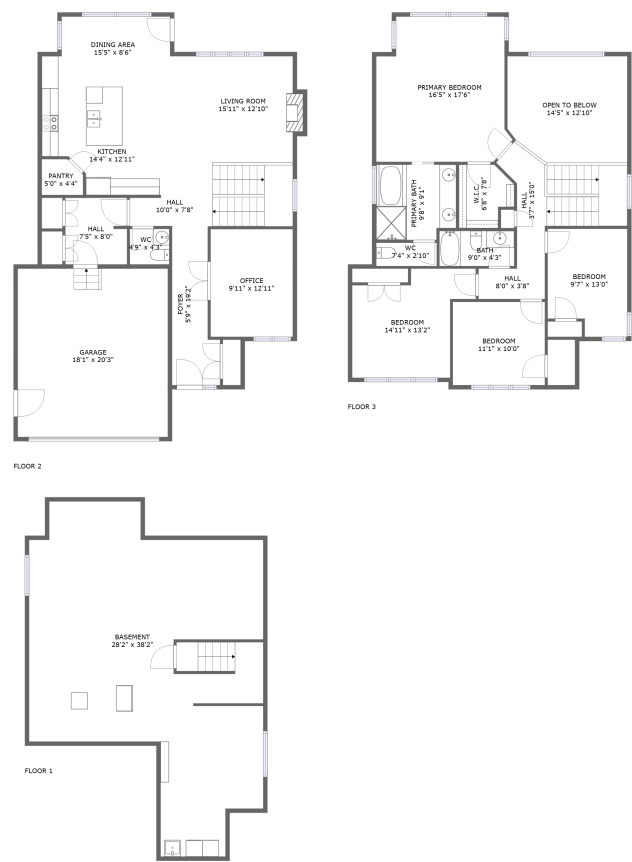




Home report


1890 Mickelberry Crescent, Orléans Avalon - Notting Gate -  
Fallingbrook - Gardenway South, Orléans, Ontario, Canada, K4A





Property summary


 **1** Garages


 **4** Bedrooms

 **2** Bathrooms

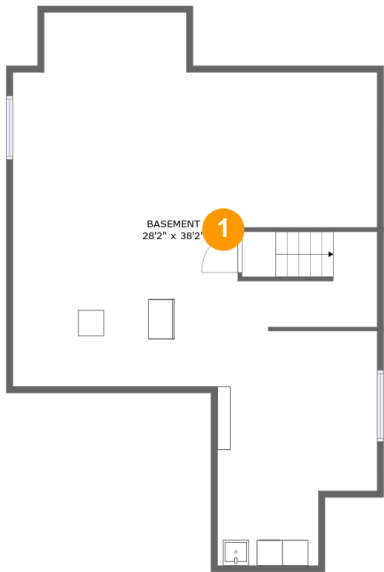
 **1** Half baths

 **3** Floors

 **2,214** Gross living area sqft

 **3,756** Total sqft

1890 Mickelberry Crescent, Orléans Avalon - Notting Gate -  
Fallingbrook - Gardenway South, Orléans, Ontario, Canada, K4A



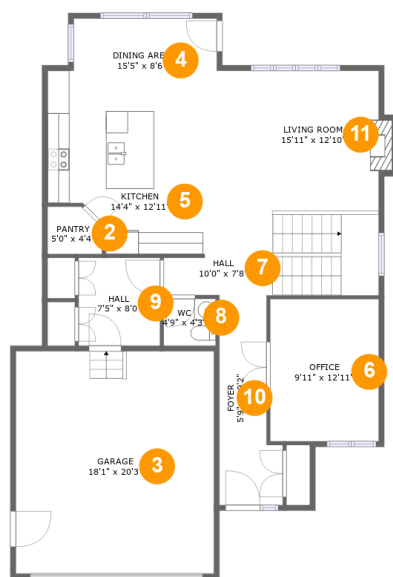
Room dimensions

Floor 1 Total sqft: 953    Living area: 0

#		Dimensions	sqft	Counted as living area
1	Basement	28'2" x 38'2"	872 sq. ft	No

Home report

1890 Mickelberry Crescent, Orléans Avalon - Notting Gate -  
Fallingbrook - Gardenway South, Orléans, Ontario, Canada, K4A



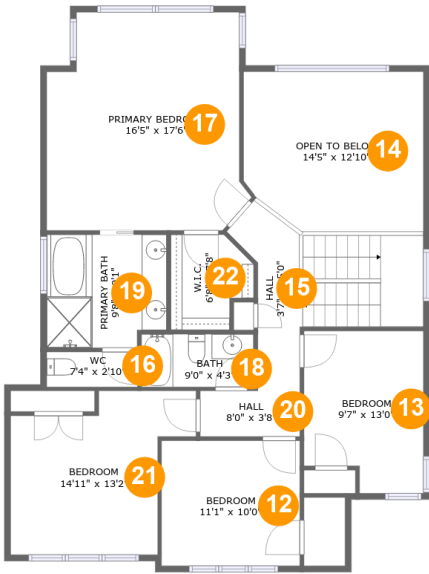
Room dimensions

Floor 2 Total sqft: 1470    Living area: 1072

#		Dimensions	sqft	Counted as living area
2	Pantry	5'0" x 4'4"	20 sq. ft	Yes
3	Garage	18'1" x 20'3"	367 sq. ft	No
4	Dining Area	15'5" x 8'6"	119 sq. ft	Yes
5	Kitchen	14'4" x 12'11"	163 sq. ft	Yes
6	Office	9'11" x 12'11"	129 sq. ft	Yes
7	Hall	10'0" x 7'8"	135 sq. ft	Yes
8	WC	4'9" x 4'3"	20 sq. ft	Yes
9	Hall	7'5" x 8'0"	59 sq. ft	Yes
10	Foyer	5'9" x 19'2"	91 sq. ft	Yes
11	Living Room	15'11" x 12'10"	207 sq. ft	Yes

Home report

1890 Mickelberry Crescent, Orléans Avalon - Notting Gate -  
Fallingbrook - Gardenway South, Orléans, Ontario, Canada, K4A



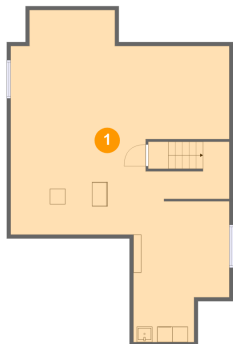
Room dimensions

Floor 3 Total sqft: 1333    Living area: 1142

#		Dimensions	sqft	Counted as living area
12	Bedroom	11'1" x 10'0"	111 sq. ft	Yes
13	Bedroom	9'7" x 13'0"	115 sq. ft	Yes
14	Open To Below	14'5" x 12'10"	177 sq. ft	No
15	Hall	3'7" x 15'0"	130 sq. ft	Yes
16	WC	7'4" x 2'10"	21 sq. ft	Yes
17	Primary Bedroom	16'5" x 17'6"	259 sq. ft	Yes
18	Bath	9'0" x 4'3"	38 sq. ft	Yes
19	Primary Bath	9'8" x 9'1"	84 sq. ft	Yes
20	Hall	8'0" x 3'8"	29 sq. ft	Yes
21	Bedroom	14'11" x 13'2"	152 sq. ft	Yes
22	W.I.C.	6'8" x 7'8"	43 sq. ft	Yes

1890 Mickelberry Crescent, Orléans Avalon - Notting Gate -  
Fallingbrook - Gardenway South, Orléans, Ontario, Canada, K4A

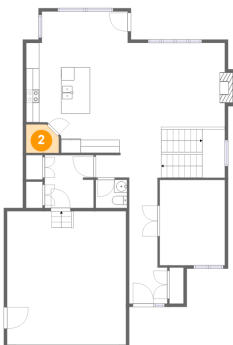
1 Floor 1 - Basement



Dimensions: 28'2" x 38'2"  
Area: 872 sq. ft  
Counted as living area: No

Heated: Yes  
Finished: No  
Enclosed: Yes  
Contiguous: Yes  
Permitted: Yes  
Wet space: No  
Addition: No  
Conversion: No

2 Floor 2 - Pantry



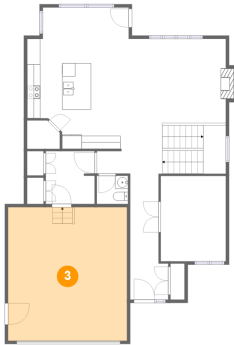
Dimensions: 5'0" x 4'4"  
Area: 20 sq. ft  
Counted as living area: Yes

Heated: Yes  
Finished: Yes  
Enclosed: Yes  
Contiguous: Yes  
Permitted: Yes  
Wet space: No  
Addition: No  
Conversion: No

**1890 Mickelberry Crescent, Orléans Avalon - Notting Gate -  
Fallingbrook - Gardenway South, Orléans, Ontario, Canada, K4A**

**3 Floor 2 - Garage**

---

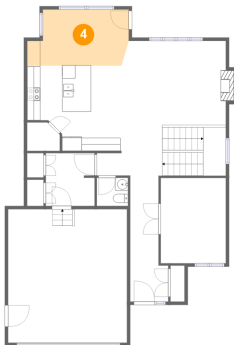


Dimensions: 18'1" x 20'3"  
Area: 367 sq. ft  
Counted as living area: No

Heated: No  
Finished: No  
Enclosed: Yes  
Contiguous: Yes  
Permitted: Yes  
Wet space: No  
Addition: No  
Conversion: No

**4 Floor 2 - Dining Area**

---

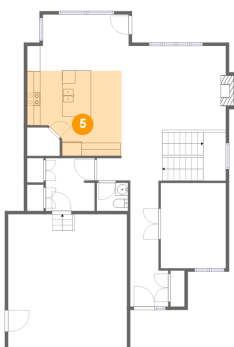


Dimensions: 15'5" x 8'6"  
Area: 119 sq. ft  
Counted as living area: Yes

Heated: Yes  
Finished: Yes  
Enclosed: Yes  
Contiguous: Yes  
Permitted: Yes  
Wet space: No  
Addition: No  
Conversion: No

**5 Floor 2 - Kitchen**

---

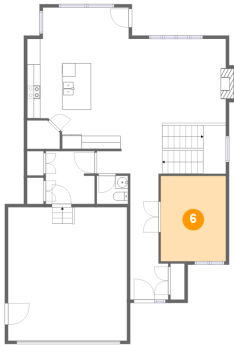


Dimensions: 14'4" x 12'11"  
Area: 163 sq. ft  
Counted as living area: Yes

Heated: Yes  
Finished: Yes  
Enclosed: Yes  
Contiguous: Yes  
Permitted: Yes  
Wet space: No  
Addition: No  
Conversion: No

**1890 Mickelberry Crescent, Orléans Avalon - Notting Gate -  
Fallingbrook - Gardenway South, Orléans, Ontario, Canada, K4A**

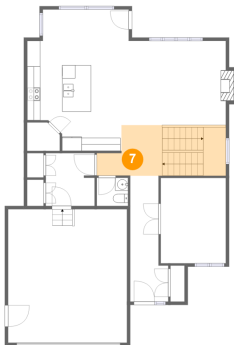
**6 Floor 2 - Office**



Dimensions: 9'11" x 12'11"  
Area: 129 sq. ft  
Counted as living area: Yes

Heated: Yes  
Finished: Yes  
Enclosed: Yes  
Contiguous: Yes  
Permitted: Yes  
Wet space: No  
Addition: No  
Conversion: No

**7 Floor 2 - Hall**



Dimensions: 10'0" x 7'8"  
Area: 135 sq. ft  
Counted as living area: Yes

Heated: Yes  
Finished: Yes  
Enclosed: Yes  
Contiguous: Yes  
Permitted: Yes  
Wet space: No  
Addition: No  
Conversion: No

**8 Floor 2 - WC**



Dimensions: 4'9" x 4'3"  
Area: 20 sq. ft  
Counted as living area: Yes

Heated: Yes  
Finished: Yes  
Enclosed: Yes  
Contiguous: Yes  
Permitted: Yes  
Wet space: Yes  
Addition: No  
Conversion: No

**1890 Mickelberry Crescent, Orléans Avalon - Notting Gate -  
Fallingbrook - Gardenway South, Orléans, Ontario, Canada, K4A**

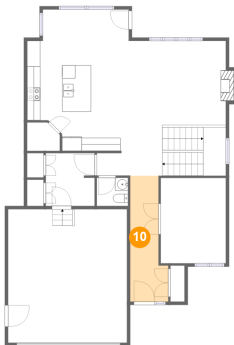
**9 Floor 2 - Hall**



Dimensions: 7'5" x 8'0"  
Area: 59 sq. ft  
Counted as living area: Yes

Heated: Yes  
Finished: Yes  
Enclosed: Yes  
Contiguous: Yes  
Permitted: Yes  
Wet space: No  
Addition: No  
Conversion: No

**10 Floor 2 - Foyer**



Dimensions: 5'9" x 19'2"  
Area: 91 sq. ft  
Counted as living area: Yes

Heated: Yes  
Finished: Yes  
Enclosed: Yes  
Contiguous: Yes  
Permitted: Yes  
Wet space: No  
Addition: No  
Conversion: No

**11 Floor 2 - Living Room**



Dimensions: 15'11" x 12'10"  
Area: 207 sq. ft  
Counted as living area: Yes

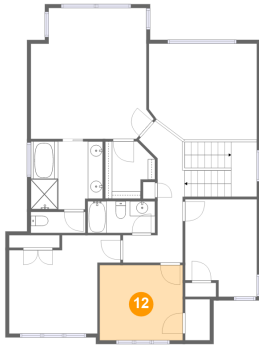
Heated: Yes  
Finished: Yes  
Enclosed: Yes  
Contiguous: Yes  
Permitted: Yes  
Wet space: No  
Addition: No  
Conversion: No



**1890 Mickelberry Crescent, Orléans Avalon - Notting Gate -  
Fallingbrook - Gardenway South, Orléans, Ontario, Canada, K4A**

**12 Floor 3 - Bedroom**

---



Dimensions: 11'1" x 10'0"  
Area: 111 sq. ft  
Counted as living area: Yes

Heated: Yes  
Finished: Yes  
Enclosed: Yes  
Contiguous: Yes  
Permitted: Yes  
Wet space: No  
Addition: No  
Conversion: No

**13 Floor 3 - Bedroom**

---



Dimensions: 9'7" x 13'0"  
Area: 115 sq. ft  
Counted as living area: Yes

Heated: Yes  
Finished: Yes  
Enclosed: Yes  
Contiguous: Yes  
Permitted: Yes  
Wet space: No  
Addition: No  
Conversion: No

**14 Floor 3 - Open To Below**

---

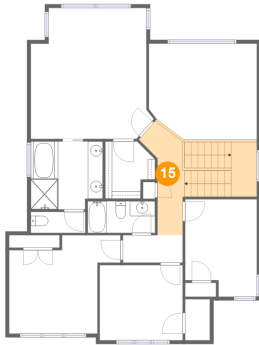


Dimensions: 14'5" x 12'10"  
Area: 177 sq. ft  
Counted as living area: No

Heated: No  
Finished: No  
Enclosed: No  
Contiguous: Yes  
Permitted: No  
Wet space: No  
Addition: No  
Conversion: No

**1890 Mickelberry Crescent, Orléans Avalon - Notting Gate -  
Fallingbrook - Gardenway South, Orléans, Ontario, Canada, K4A**

**15 Floor 3 - Hall**



Dimensions: 3'7" x 15'0"  
Area: 130 sq. ft  
Counted as living area: Yes

Heated: Yes  
Finished: Yes  
Enclosed: Yes  
Contiguous: Yes  
Permitted: Yes  
Wet space: No  
Addition: No  
Conversion: No

**16 Floor 3 - WC**



Dimensions: 7'4" x 2'10"  
Area: 21 sq. ft  
Counted as living area: Yes

Heated: Yes  
Finished: Yes  
Enclosed: Yes  
Contiguous: Yes  
Permitted: Yes  
Wet space: Yes  
Addition: No  
Conversion: No

**17 Floor 3 - Primary Bedroom**



Dimensions: 16'5" x 17'6"  
Area: 259 sq. ft  
Counted as living area: Yes

Heated: Yes  
Finished: Yes  
Enclosed: Yes  
Contiguous: Yes  
Permitted: Yes  
Wet space: No  
Addition: No  
Conversion: No

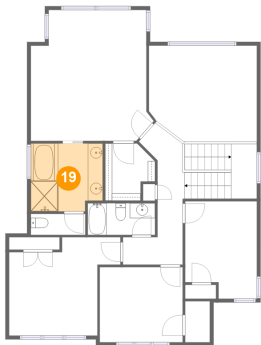
18 Floor 3 - Bath



Dimensions: 9'0" x 4'3"  
Area: 38 sq. ft  
Counted as living area: Yes

Heated: Yes  
Finished: Yes  
Enclosed: Yes  
Contiguous: Yes  
Permitted: Yes  
Wet space: Yes  
Addition: No  
Conversion: No

19 Floor 3 - Primary Bath



Dimensions: 9'8" x 9'1"  
Area: 84 sq. ft  
Counted as living area: Yes

Heated: Yes  
Finished: Yes  
Enclosed: Yes  
Contiguous: Yes  
Permitted: Yes  
Wet space: Yes  
Addition: No  
Conversion: No

20 Floor 3 - Hall



Dimensions: 8'0" x 3'8"  
Area: 29 sq. ft  
Counted as living area: Yes

Heated: Yes  
Finished: Yes  
Enclosed: Yes  
Contiguous: Yes  
Permitted: Yes  
Wet space: No  
Addition: No  
Conversion: No

1890 Mickelberry Crescent, Orléans Avalon - Notting Gate -  
Fallingbrook - Gardenway South, Orléans, Ontario, Canada, K4A

21 Floor 3 - Bedroom



Dimensions: 14'11" x 13'2"  
Area: 152 sq. ft  
Counted as living area: Yes

Heated: Yes  
Finished: Yes  
Enclosed: Yes  
Contiguous: Yes  
Permitted: Yes  
Wet space: No  
Addition: No  
Conversion: No

22 Floor 3 - W.I.C.



Dimensions: 6'8" x 7'8"  
Area: 43 sq. ft  
Counted as living area: Yes

Heated: Yes  
Finished: Yes  
Enclosed: Yes  
Contiguous: Yes  
Permitted: Yes  
Wet space: No  
Addition: No  
Conversion: No