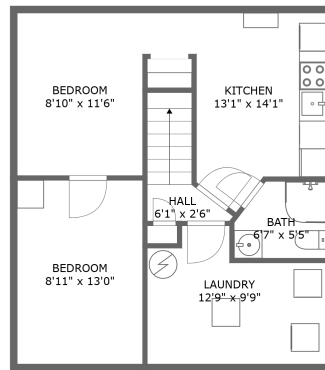
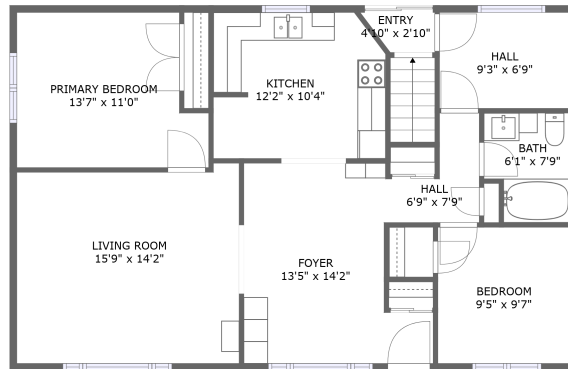



Home report

52 Hope St S, Port Hope, ON, CA



Property summary


 **0** Garages

 **4** Bedrooms

 **2** Bathrooms

 **0** Half baths

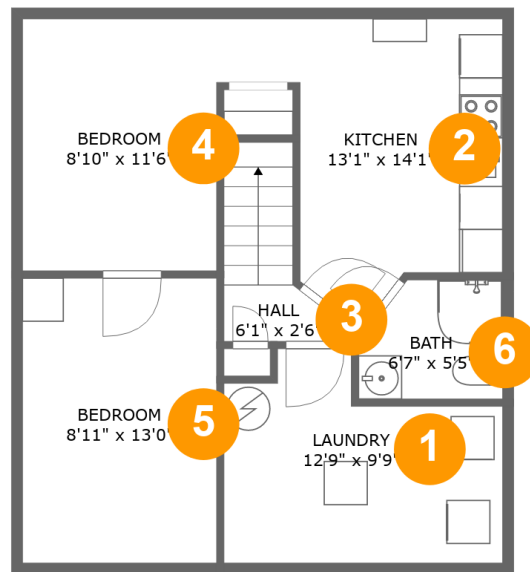
 **2** Floors

 **1,634** Gross living area sqft

 **1,634** Total sqft

Home report

52 Hope St S, Port Hope, ON, CA



Room dimensions

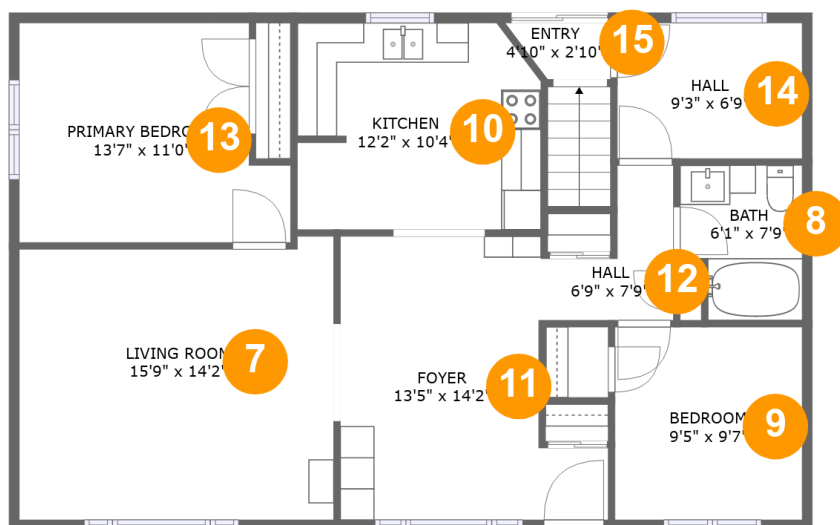
Floor 1

Total sqft: 594 Living area: 594

#		Dimensions	sqft	Counted as living area
1	Laundry	12'9" x 9'9"	103 sq. ft	Yes
2	Kitchen	13'1" x 14'1"	125 sq. ft	Yes
3	Hall	6'1" x 2'6"	33 sq. ft	Yes
4	Bedroom	8'10" x 11'6"	102 sq. ft	Yes
5	Bedroom	8'11" x 13'0"	116 sq. ft	Yes
6	Bath	6'7" x 5'5"	33 sq. ft	Yes

Home report

52 Hope St S, Port Hope, ON, CA



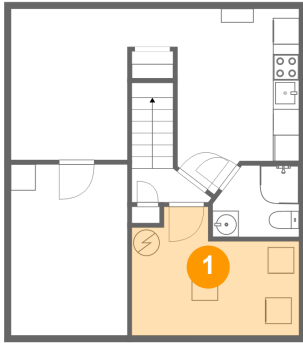
Room dimensions

Floor 2

Total sqft: 1040 Living area: 1040

#		Dimensions	sqft	Counted as living area
7	Living Room	15'9" x 14'2"	214 sq. ft	Yes
8	Bath	6'1" x 7'9"	43 sq. ft	Yes
9	Bedroom	9'5" x 9'7"	91 sq. ft	Yes
10	Kitchen	12'2" x 10'4"	122 sq. ft	Yes
11	Foyer	13'5" x 14'2"	154 sq. ft	Yes
12	Hall	6'9" x 7'9"	34 sq. ft	Yes
13	Primary Bedroom	13'7" x 11'0"	135 sq. ft	Yes
14	Hall	9'3" x 6'9"	63 sq. ft	Yes
15	Entry	4'10" x 2'10"	12 sq. ft	Yes

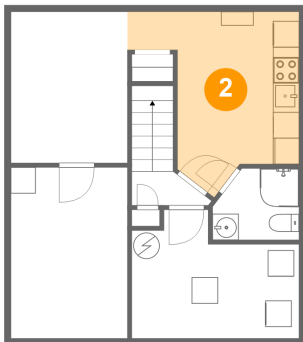
1 Floor 1 - Laundry



Dimensions: 12'9" x 9'9"
Area: 103 sq. ft
Counted as living area: Yes

Heated: Yes
Finished: Yes
Enclosed: Yes
Contiguous: Yes
Permitted: Yes
Wet space: No
Addition: No
Conversion: No

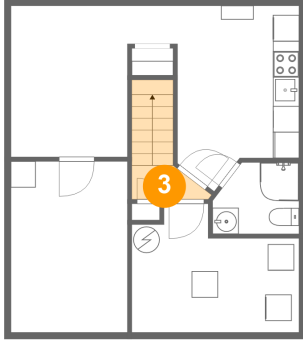
2 Floor 1 - Kitchen



Dimensions: 13'1" x 14'1"
Area: 125 sq. ft
Counted as living area: Yes

Heated: Yes
Finished: Yes
Enclosed: Yes
Contiguous: Yes
Permitted: Yes
Wet space: No
Addition: No
Conversion: No

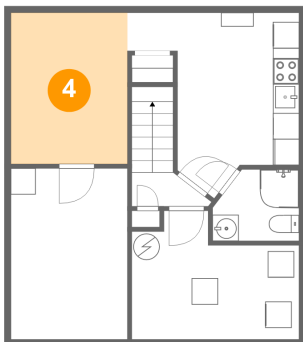
3 Floor 1 - Hall



Dimensions: 6'1" x 2'6"
Area: 33 sq. ft
Counted as living area: Yes

Heated: Yes
Finished: Yes
Enclosed: Yes
Contiguous: Yes
Permitted: Yes
Wet space: No
Addition: No
Conversion: No

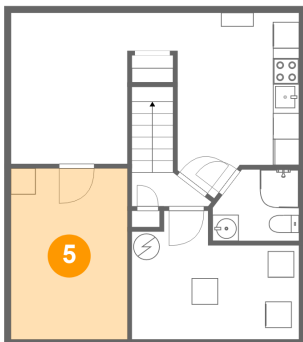
4 Floor 1 - Bedroom



Dimensions: 8'10" x 11'6"
Area: 102 sq. ft
Counted as living area: Yes

Heated: Yes
Finished: Yes
Enclosed: Yes
Contiguous: Yes
Permitted: Yes
Wet space: No
Addition: No
Conversion: No

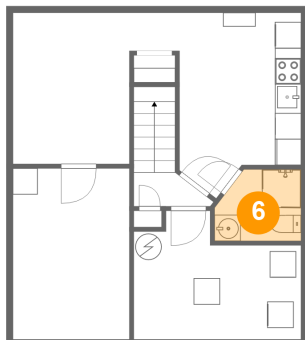
5 Floor 1 - Bedroom



Dimensions: 8'11" x 13'0"
Area: 116 sq. ft
Counted as living area: Yes

Heated: Yes
Finished: Yes
Enclosed: Yes
Contiguous: Yes
Permitted: Yes
Wet space: No
Addition: No
Conversion: No

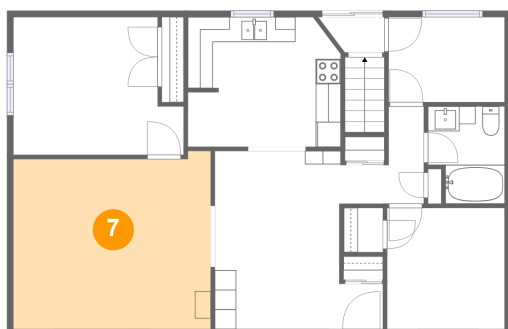
6 Floor 1 - Bath



Dimensions: 6'7" x 5'5"
Area: 33 sq. ft
Counted as living area: Yes

Heated: Yes
Finished: Yes
Enclosed: Yes
Contiguous: Yes
Permitted: Yes
Wet space: Yes
Addition: No
Conversion: No

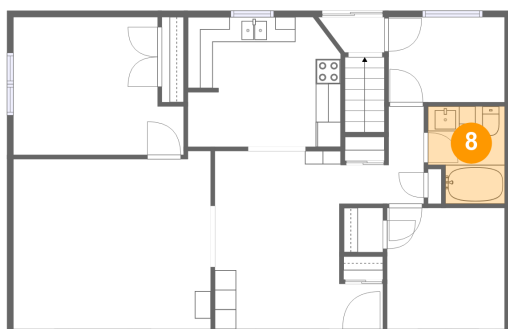
7 Floor 2 - Living Room



Dimensions: 15'9" x 14'2"
Area: 214 sq. ft
Counted as living area: Yes

Heated: Yes
Finished: Yes
Enclosed: Yes
Contiguous: Yes
Permitted: Yes
Wet space: No
Addition: No
Conversion: No

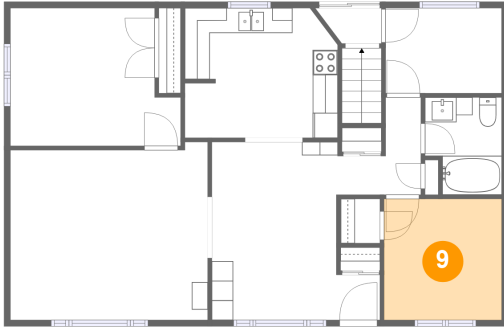
8 Floor 2 - Bath



Dimensions: 6'1" x 7'9"
Area: 43 sq. ft
Counted as living area: Yes

Heated: Yes
Finished: Yes
Enclosed: Yes
Contiguous: Yes
Permitted: Yes
Wet space: Yes
Addition: No
Conversion: No

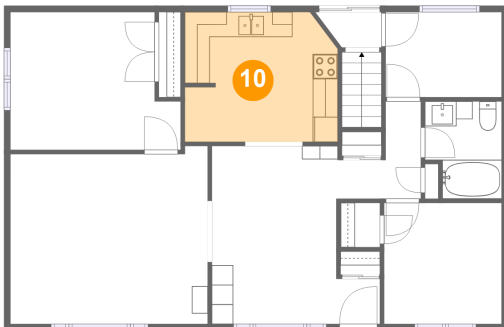
9 Floor 2 - Bedroom



Dimensions: 9'5" x 9'7"
Area: 91 sq. ft
Counted as living area: Yes

Heated: Yes
Finished: Yes
Enclosed: Yes
Contiguous: Yes
Permitted: Yes
Wet space: No
Addition: No
Conversion: No

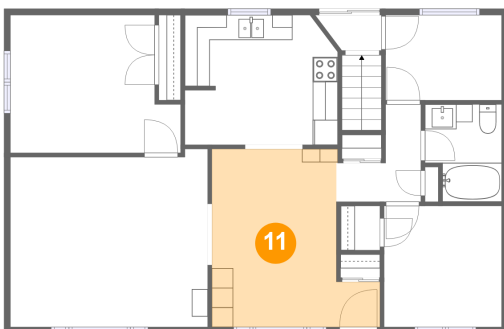
10 Floor 2 - Kitchen



Dimensions: 12'2" x 10'4"
Area: 122 sq. ft
Counted as living area: Yes

Heated: Yes
Finished: Yes
Enclosed: Yes
Contiguous: Yes
Permitted: Yes
Wet space: No
Addition: No
Conversion: No

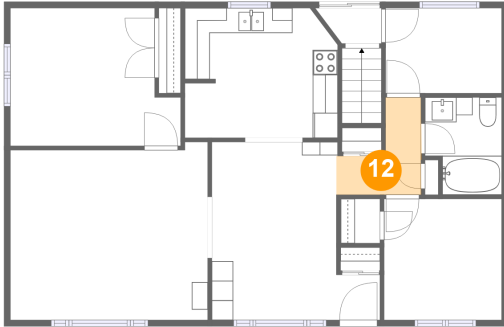
11 Floor 2 - Foyer



Dimensions: 13'5" x 14'2"
Area: 154 sq. ft
Counted as living area: Yes

Heated: Yes
Finished: Yes
Enclosed: Yes
Contiguous: Yes
Permitted: Yes
Wet space: No
Addition: No
Conversion: No

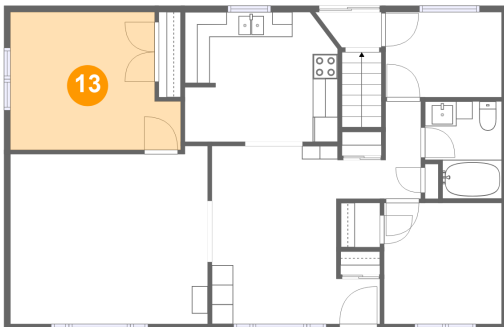
12 Floor 2 - Hall



Dimensions: 6'9" x 7'9"
Area: 34 sq. ft
Counted as living area: Yes

Heated: Yes
Finished: Yes
Enclosed: Yes
Contiguous: Yes
Permitted: Yes
Wet space: No
Addition: No
Conversion: No

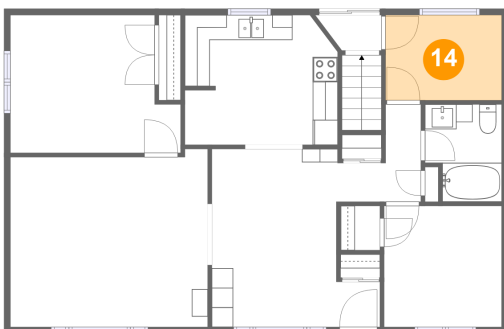
13 Floor 2 - Primary Bedroom



Dimensions: 13'7" x 11'0"
Area: 135 sq. ft
Counted as living area: Yes

Heated: Yes
Finished: Yes
Enclosed: Yes
Contiguous: Yes
Permitted: Yes
Wet space: No
Addition: No
Conversion: No

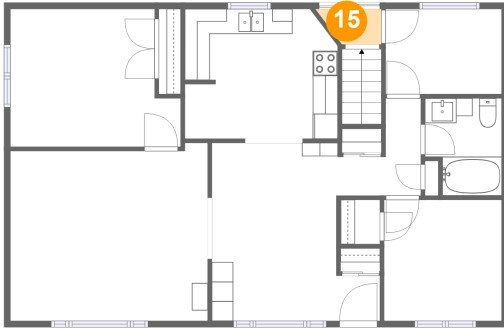
14 Floor 2 - Hall



Dimensions: 9'3" x 6'9"
Area: 63 sq. ft
Counted as living area: Yes

Heated: Yes
Finished: Yes
Enclosed: Yes
Contiguous: Yes
Permitted: Yes
Wet space: No
Addition: No
Conversion: No

15 Floor 2 - Entry



Dimensions: 4'10" x 2'10"
Area: 12 sq. ft
Counted as living area: Yes

Heated: Yes
Finished: Yes
Enclosed: Yes
Contiguous: Yes
Permitted: Yes
Wet space: No
Addition: No
Conversion: No