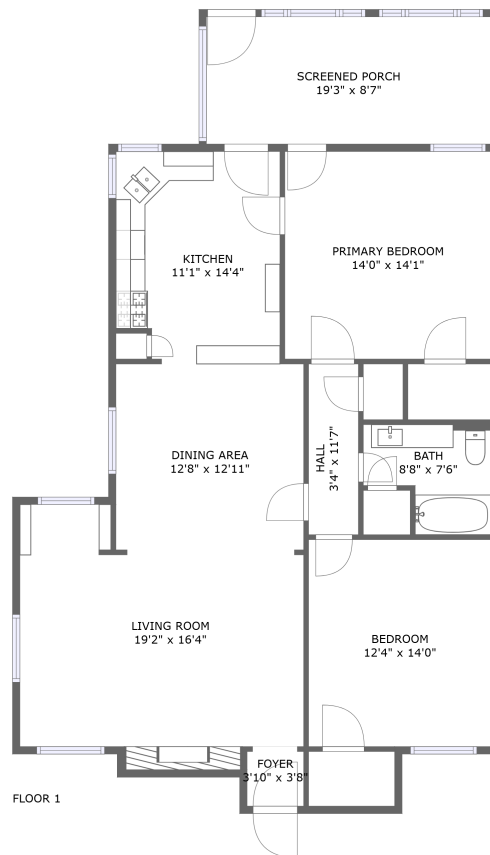


Home report

5313 Wild Oak Rd, Balch Springs, TX, US



**Total Area: 1185 sq. ft**

Floor 1: 1185 sq. ft

Excluded: Screened porch 166 sq. ft, Walls: 96 sq. ft

## Property summary



Home report

# 5313 Wild Oak Rd, Balch Springs, TX, US



## Room dimensions

Floor 1

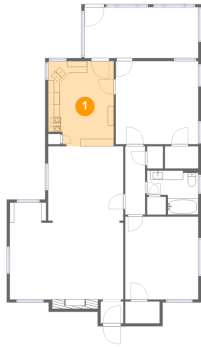
Total: 1185 sqft

Excluded: 166 sqft

#		Max Dimensions	sqft	Included
1	Kitchen	11'1" x 14'4"	154 sq. ft	Yes
2	Bath	8'8" x 7'6"	53 sq. ft	Yes
3	Screened Porch	19'3" x 8'7"	166 sq. ft	No
4	Living Room	19'2" x 16'4"	283 sq. ft	Yes
5	Foyer	3'10" x 3'8"	14 sq. ft	Yes
6	Hall	3'4" x 11'7"	39 sq. ft	Yes
7	Dining Area	12'8" x 12'11"	164 sq. ft	Yes
8	Bedroom	12'4" x 14'0"	173 sq. ft	Yes
9	Primary Bedroom	14'0" x 14'1"	197 sq. ft	Yes

## 1 Floor 1 - Kitchen

---

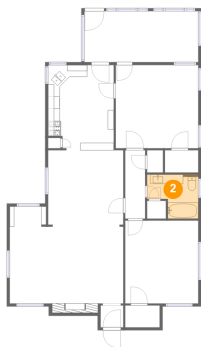


Max Dimensions: 11'1" x 14'4"  
Calculated Area: 154 sq. ft  
Included: Yes

Heated: Yes  
Finished: Yes  
Enclosed: Yes  
Contiguous: Yes  
Permitted: Yes  
Wet space: No  
Addition: No  
Conversion: No

## 2 Floor 1 - Bath

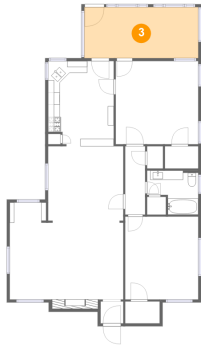
---



Max Dimensions: 8'8" x 7'6"  
Calculated Area: 53 sq. ft  
Included: Yes

Heated: Yes  
Finished: Yes  
Enclosed: Yes  
Contiguous: Yes  
Permitted: Yes  
Wet space: Yes  
Addition: No  
Conversion: No

### 3 Floor 1 - Screened Porch



Max Dimensions: 19'3" x 8'7"  
Calculated Area: 166 sq. ft  
Included: No

Heated: No  
Finished: Yes  
Enclosed: No  
Contiguous: Yes  
Permitted: Yes  
Wet space: No  
Addition: No  
Conversion: No

### 4 Floor 1 - Living Room



Max Dimensions: 19'2" x 16'4"  
Calculated Area: 283 sq. ft  
Included: Yes

Heated: Yes  
Finished: Yes  
Enclosed: Yes  
Contiguous: Yes  
Permitted: Yes  
Wet space: No  
Addition: No  
Conversion: No

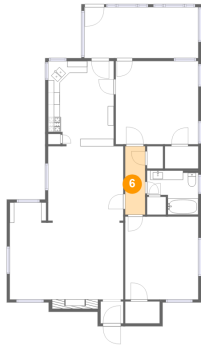
### 5 Floor 1 - Foyer



Max Dimensions: 3'10" x 3'8"  
Calculated Area: 14 sq. ft  
Included: Yes

Heated: Yes  
Finished: Yes  
Enclosed: Yes  
Contiguous: Yes  
Permitted: Yes  
Wet space: No  
Addition: No  
Conversion: No

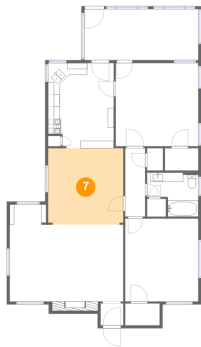
### 6 Floor 1 - Hall



Max Dimensions: 3'4" x 11'7"  
Calculated Area: 39 sq. ft  
Included: Yes

Heated: Yes  
Finished: Yes  
Enclosed: Yes  
Contiguous: Yes  
Permitted: Yes  
Wet space: No  
Addition: No  
Conversion: No

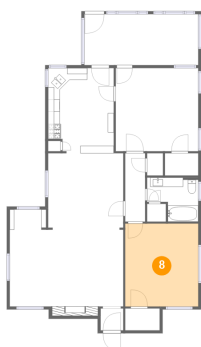
### 7 Floor 1 - Dining Area



Max Dimensions: 12'8" x 12'11"  
Calculated Area: 164 sq. ft  
Included: Yes

Heated: Yes  
Finished: Yes  
Enclosed: Yes  
Contiguous: Yes  
Permitted: Yes  
Wet space: No  
Addition: No  
Conversion: No

### 8 Floor 1 - Bedroom

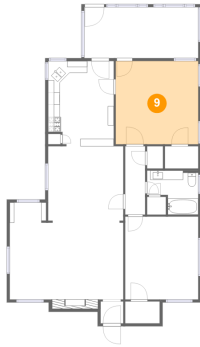


Max Dimensions: 12'4" x 14'0"  
Calculated Area: 173 sq. ft  
Included: Yes

Heated: Yes  
Finished: Yes  
Enclosed: Yes  
Contiguous: Yes  
Permitted: Yes  
Wet space: No  
Addition: No  
Conversion: No

**9** Floor 1 - Primary Bedroom

---



**Max Dimensions:** 14'0" x 14'1"  
**Calculated Area:** 197 sq. ft  
**Included:** Yes

**Heated:** Yes  
**Finished:** Yes  
**Enclosed:** Yes  
**Contiguous:** Yes  
**Permitted:** Yes  
**Wet space:** No  
**Addition:** No  
**Conversion:** No