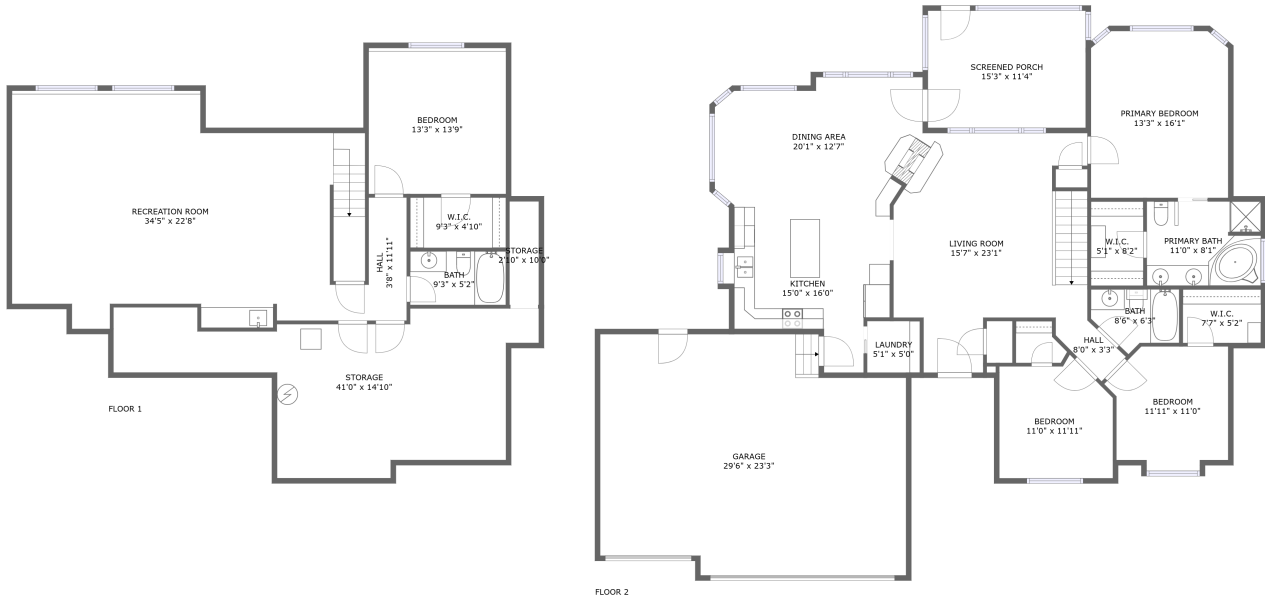



1951 South West Longhorn Drive, El Dorado, Butler County, Kansas, United States, 67042



Property summary


 **1** Garages


 **4** Bedrooms

 **3** Bathrooms

 **0** Half baths

 **2** Floors

 **2,737** Gross living area sqft

 **4,096** Total sqft

1951 South West Longhorn Drive, El Dorado, Butler County, Kansas, United States, 67042



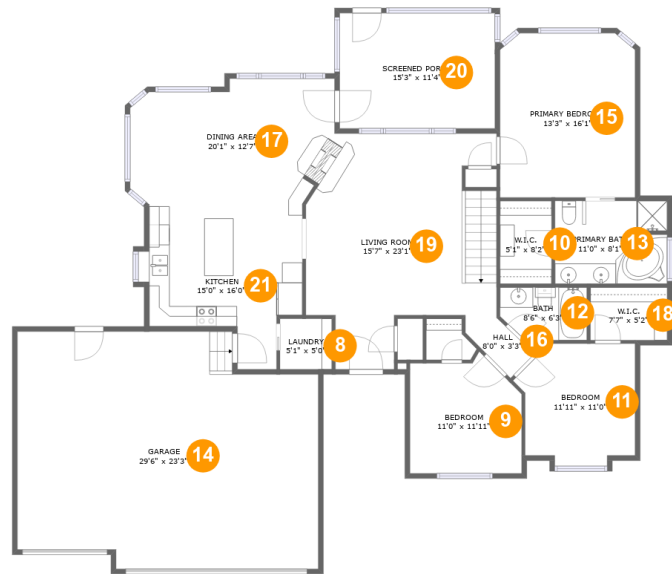
Room dimensions

Floor 1

Total sqft: 1577 Living area: 1089

#		Dimensions	sqft	Counted as living area
1	Recreation Room	34'5" x 22'8"	672 sq. ft	Yes
2	Bedroom	13'3" x 13'9"	187 sq. ft	Yes
3	Storage	2'10" x 10'0"	28 sq. ft	No
4	Hall	3'8" x 11'11"	44 sq. ft	Yes
5	W.I.C.	9'3" x 4'10"	45 sq. ft	Yes
6	Bath	9'3" x 5'2"	48 sq. ft	Yes
7	Storage	41'0" x 14'10"	415 sq. ft	No

1951 South West Longhorn Drive, El Dorado, Butler County, Kansas, United States, 67042



Room dimensions

Floor 2

Total sqft: 2519 Living area: 1648

#		Dimensions	sqft	Counted as living area
8	Laundry	5'1" x 5'0"	25 sq. ft	Yes
9	Bedroom	11'0" x 11'11"	115 sq. ft	Yes
10	W.I.C.	5'1" x 8'2"	41 sq. ft	Yes
11	Bedroom	11'11" x 11'0"	117 sq. ft	Yes
12	Bath	8'6" x 6'3"	43 sq. ft	Yes
13	Primary Bath	11'0" x 8'1"	89 sq. ft	Yes
14	Garage	29'6" x 23'3"	634 sq. ft	No
15	Primary Bedroom	13'3" x 16'1"	210 sq. ft	Yes
16	Hall	8'0" x 3'3"	59 sq. ft	Yes
17	Dining Area	20'1" x 12'7"	230 sq. ft	Yes
18	W.I.C.	7'7" x 5'2"	39 sq. ft	Yes

Scan captured on Thu, 10 Oct 2024 02:25:00 GMT

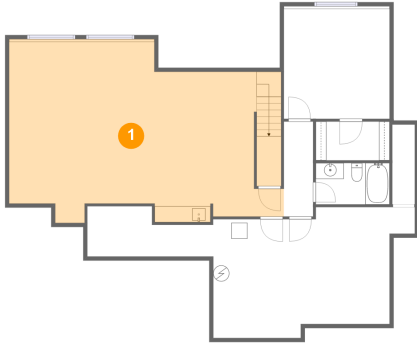
Information is calculated by Cubicasa technology deemed highly reliable but not guaranteed.

**1951 South West Longhorn Drive, El Dorado, Butler
County, Kansas, United States, 67042**

#		Dimensions	sqft	Counted as living area
19	Living Room	15'7" x 23'1"	302 sq. ft	Yes
20	Screened Porch	15'3" x 11'4"	172 sq. ft	No
21	Kitchen	15'0" x 16'0"	190 sq. ft	Yes

1951 South West Longhorn Drive, El Dorado, Butler County, Kansas, United States, 67042

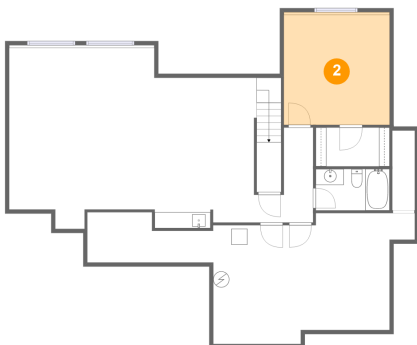
1 Floor 1 - Recreation Room



Dimensions: 34'5" x 22'8"
Area: 672 sq. ft
Counted as living area: Yes

Heated: Yes
Finished: Yes
Enclosed: Yes
Contiguous: Yes
Permitted: Yes
Wet space: No
Addition: No
Conversion: No

2 Floor 1 - Bedroom



Dimensions: 13'3" x 13'9"
Area: 187 sq. ft
Counted as living area: Yes

Heated: Yes
Finished: Yes
Enclosed: Yes
Contiguous: Yes
Permitted: Yes
Wet space: No
Addition: No
Conversion: No

1951 South West Longhorn Drive, El Dorado, Butler County, Kansas, United States, 67042

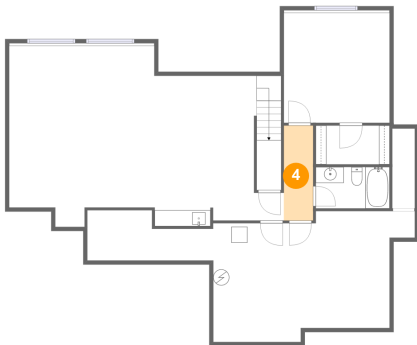
3 Floor 1 - Storage



Dimensions: 2'10" x 10'0"
Area: 28 sq. ft
Counted as living area: No

Heated: No
Finished: No
Enclosed: No
Contiguous: Yes
Permitted: Yes
Wet space: No
Addition: No
Conversion: No

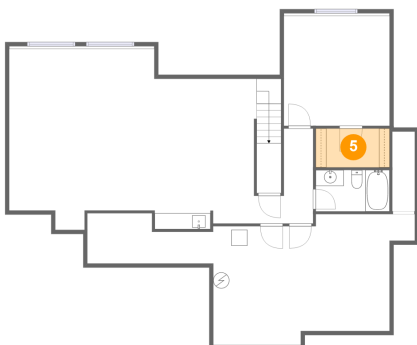
4 Floor 1 - Hall



Dimensions: 3'8" x 11'11"
Area: 44 sq. ft
Counted as living area: Yes

Heated: Yes
Finished: Yes
Enclosed: Yes
Contiguous: Yes
Permitted: Yes
Wet space: No
Addition: No
Conversion: No

5 Floor 1 - W.I.C.

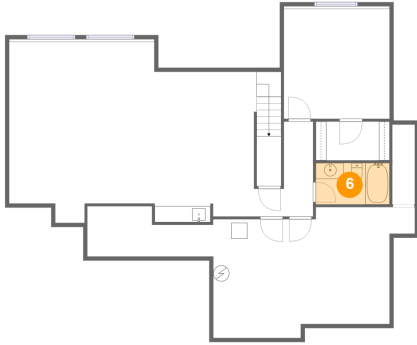


Dimensions: 9'3" x 4'10"
Area: 45 sq. ft
Counted as living area: Yes

Heated: Yes
Finished: Yes
Enclosed: Yes
Contiguous: Yes
Permitted: Yes
Wet space: No
Addition: No
Conversion: No

1951 South West Longhorn Drive, El Dorado, Butler County, Kansas, United States, 67042

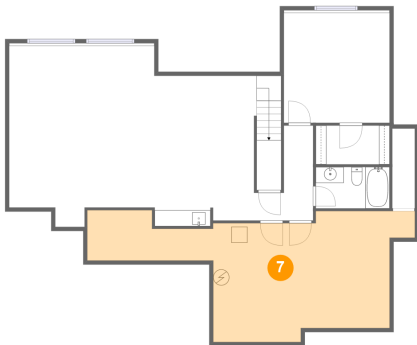
6 Floor 1 - Bath



Dimensions: 9'3" x 5'2"
Area: 48 sq. ft
Counted as living area: Yes

Heated: Yes
Finished: Yes
Enclosed: Yes
Contiguous: Yes
Permitted: Yes
Wet space: Yes
Addition: No
Conversion: No

7 Floor 1 - Storage



Dimensions: 41'0" x 14'10"
Area: 415 sq. ft
Counted as living area: No

Heated: No
Finished: No
Enclosed: No
Contiguous: Yes
Permitted: Yes
Wet space: No
Addition: No
Conversion: No

8 Floor 2 - Laundry

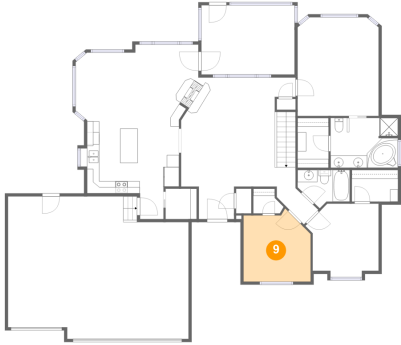


Dimensions: 5'1" x 5'0"
Area: 25 sq. ft
Counted as living area: Yes

Heated: Yes
Finished: Yes
Enclosed: Yes
Contiguous: Yes
Permitted: Yes
Wet space: No
Addition: No
Conversion: No

1951 South West Longhorn Drive, El Dorado, Butler County, Kansas, United States, 67042

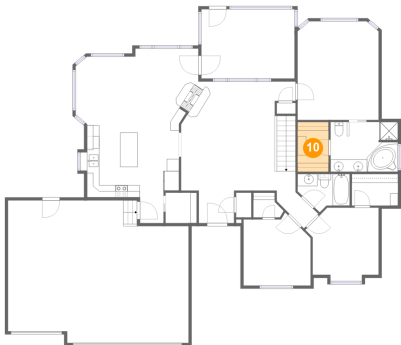
9 Floor 2 - Bedroom



Dimensions: 11'0" x 11'11"
Area: 115 sq. ft
Counted as living area: Yes

Heated: Yes
Finished: Yes
Enclosed: Yes
Contiguous: Yes
Permitted: Yes
Wet space: No
Addition: No
Conversion: No

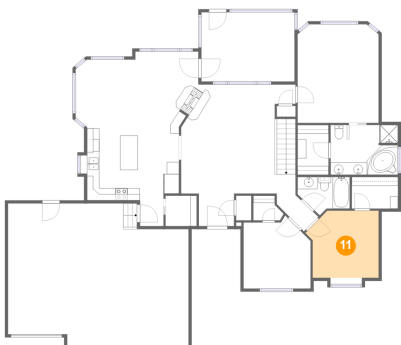
10 Floor 2 - W.I.C.



Dimensions: 5'1" x 8'2"
Area: 41 sq. ft
Counted as living area: Yes

Heated: Yes
Finished: Yes
Enclosed: Yes
Contiguous: Yes
Permitted: Yes
Wet space: No
Addition: No
Conversion: No

11 Floor 2 - Bedroom

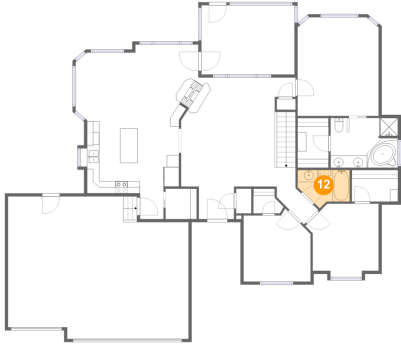


Dimensions: 11'11" x 11'0"
Area: 117 sq. ft
Counted as living area: Yes

Heated: Yes
Finished: Yes
Enclosed: Yes
Contiguous: Yes
Permitted: Yes
Wet space: No
Addition: No
Conversion: No

1951 South West Longhorn Drive, El Dorado, Butler County, Kansas, United States, 67042

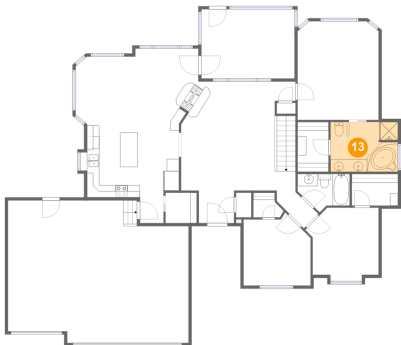
12 Floor 2 - Bath



Dimensions: 8'6" x 6'3"
Area: 43 sq. ft
Counted as living area: Yes

Heated: Yes
Finished: Yes
Enclosed: Yes
Contiguous: Yes
Permitted: Yes
Wet space: Yes
Addition: No
Conversion: No

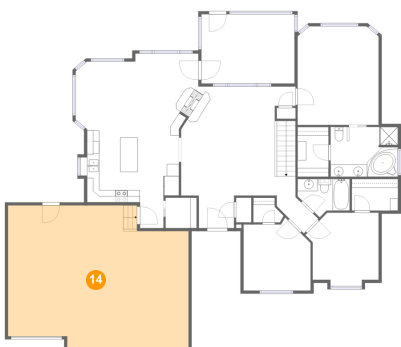
13 Floor 2 - Primary Bath



Dimensions: 11'0" x 8'1"
Area: 89 sq. ft
Counted as living area: Yes

Heated: Yes
Finished: Yes
Enclosed: Yes
Contiguous: Yes
Permitted: Yes
Wet space: Yes
Addition: No
Conversion: No

14 Floor 2 - Garage

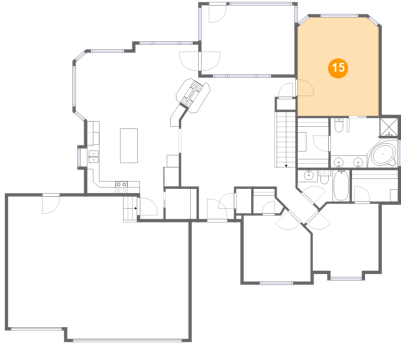


Dimensions: 29'6" x 23'3"
Area: 634 sq. ft
Counted as living area: No

Heated: No
Finished: No
Enclosed: Yes
Contiguous: Yes
Permitted: Yes
Wet space: No
Addition: No
Conversion: No

1951 South West Longhorn Drive, El Dorado, Butler County, Kansas, United States, 67042

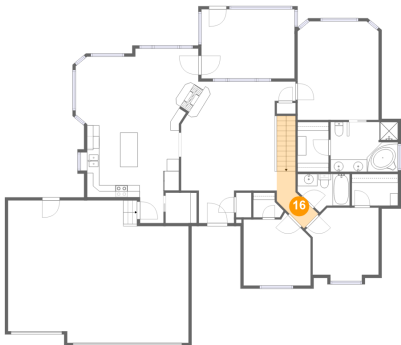
15 Floor 2 - Primary Bedroom



Dimensions: 13'3" x 16'1"
Area: 210 sq. ft
Counted as living area: Yes

Heated: Yes
Finished: Yes
Enclosed: Yes
Contiguous: Yes
Permitted: Yes
Wet space: No
Addition: No
Conversion: No

16 Floor 2 - Hall



Dimensions: 8'0" x 3'3"
Area: 59 sq. ft
Counted as living area: Yes

Heated: Yes
Finished: Yes
Enclosed: Yes
Contiguous: Yes
Permitted: Yes
Wet space: No
Addition: No
Conversion: No

17 Floor 2 - Dining Area

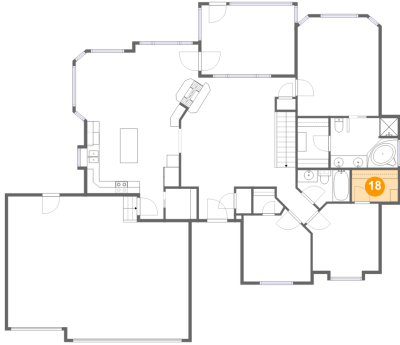


Dimensions: 20'1" x 12'7"
Area: 230 sq. ft
Counted as living area: Yes

Heated: Yes
Finished: Yes
Enclosed: Yes
Contiguous: Yes
Permitted: Yes
Wet space: No
Addition: No
Conversion: No

**1951 South West Longhorn Drive, El Dorado, Butler
County, Kansas, United States, 67042**

18 Floor 2 - W.I.C.



Dimensions: 7'7" x 5'2"
Area: 39 sq. ft
Counted as living area: Yes

Heated: Yes
Finished: Yes
Enclosed: Yes
Contiguous: Yes
Permitted: Yes
Wet space: No
Addition: No
Conversion: No

19 Floor 2 - Living Room



Dimensions: 15'7" x 23'1"
Area: 302 sq. ft
Counted as living area: Yes

Heated: Yes
Finished: Yes
Enclosed: Yes
Contiguous: Yes
Permitted: Yes
Wet space: No
Addition: No
Conversion: No

20 Floor 2 - Screened Porch

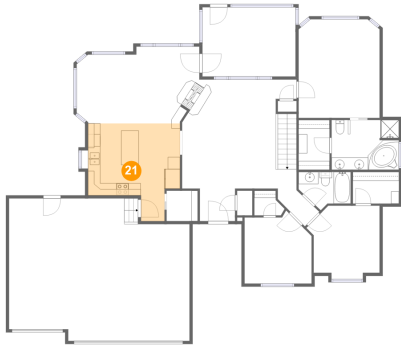


Dimensions: 15'3" x 11'4"
Area: 172 sq. ft
Counted as living area: No

Heated: No
Finished: Yes
Enclosed: No
Contiguous: Yes
Permitted: Yes
Wet space: No
Addition: No
Conversion: No

**1951 South West Longhorn Drive, El Dorado, Butler
County, Kansas, United States, 67042**

21 Floor 2 - Kitchen



Dimensions: 15'0" x 16'0"
Area: 190 sq. ft
Counted as living area: Yes

Heated: Yes
Finished: Yes
Enclosed: Yes
Contiguous: Yes
Permitted: Yes
Wet space: No
Addition: No
Conversion: No