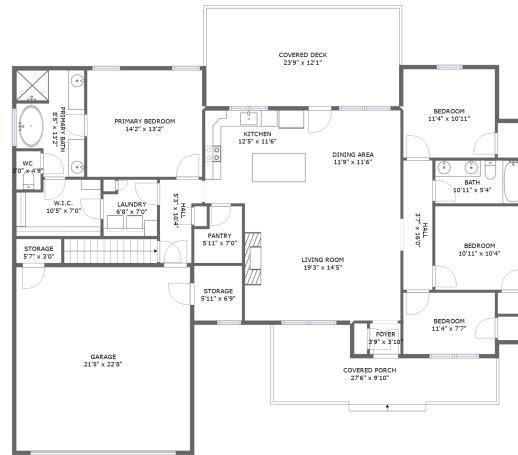
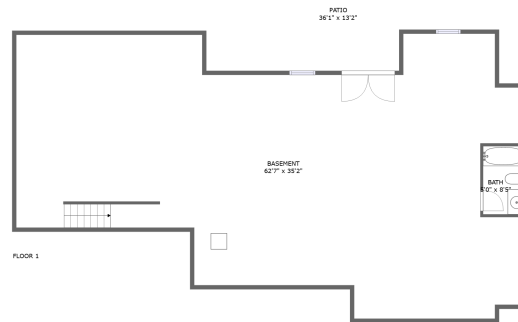


103 Twin Cove Trail, Moneta, Bedford County, Virginia, United States, 24121



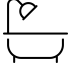



FLOOR 2



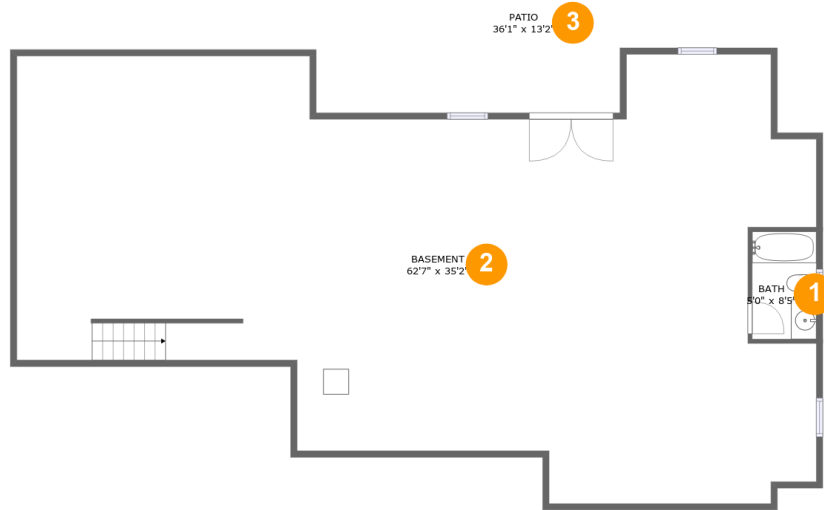
FLOOR 1

Property Summary

 **1** garages  **4** bedrooms  **3** bathrooms  **0** half baths

 **2** floors  **1,751** Gross Living Area sqft  **5,049** total sqft

103 Twin Cove Trail, Moneta, Bedford County, Virginia, United States, 24121



Room Dimensions

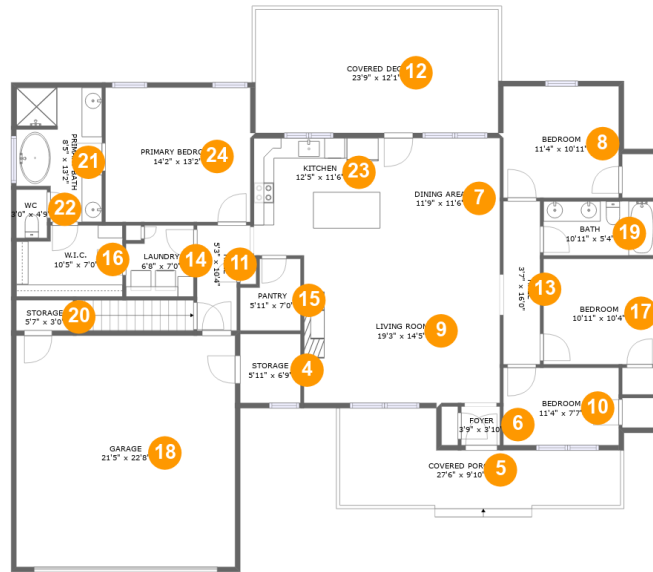
Floor 1

Total sqft: 2235

Living area: 0

#	Room name	Dimensions	Area (sqft)	Counted as Living Area
1	Bath	5'0" x 8'5"	42 sq. ft	No
2	Basement	62'7" x 35'2"	1667 sq. ft	No
3	Patio	36'1" x 13'2"	415 sq. ft	No

103 Twin Cove Trail, Moneta, Bedford County, Virginia, United States, 24121



Room Dimensions

Floor 2

Total sqft: 2814

Living area: 1751

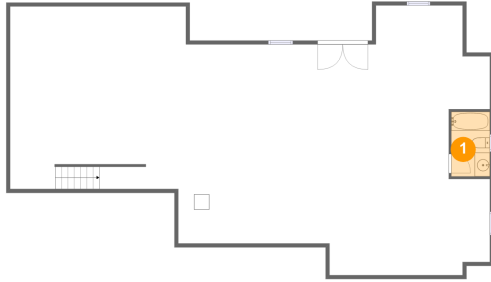
#	Room name	Dimensions	Area (sqft)	Counted as Living Area
4	Storage	5'11" x 6'9"	40 sq. ft	No
5	Covered Porch	27'6" x 9'10"	191 sq. ft	No
6	Foyer	3'9" x 3'10"	14 sq. ft	Yes
7	Dining Area	11'9" x 11'6"	135 sq. ft	Yes
8	Bedroom	11'4" x 10'11"	124 sq. ft	Yes
9	Living Room	19'3" x 14'5"	278 sq. ft	Yes
10	Bedroom	11'4" x 7'7"	86 sq. ft	Yes
11	Hall	5'3" x 10'4"	44 sq. ft	Yes
12	Covered Deck	23'9" x 12'1"	288 sq. ft	No
13	Hall	3'7" x 16'0"	58 sq. ft	Yes
14	Laundry	6'8" x 7'0"	43 sq. ft	Yes

**103 Twin Cove Trail, Moneta, Bedford County,
Virginia, United States, 24121**

#	Room name	Dimensions	Area (sqft)	Counted as Living Area
15	Pantry	5'11" x 7'0"	36 sq. ft	Yes
16	W.i.c.	10'5" x 7'0"	68 sq. ft	Yes
17	Bedroom	10'11" x 10'4"	113 sq. ft	Yes
18	Garage	21'5" x 22'8"	486 sq. ft	No
19	Bath	10'11" x 5'4"	58 sq. ft	Yes
20	Storage	5'7" x 3'0"	17 sq. ft	No
21	Primary Bath	8'5" x 13'2"	98 sq. ft	Yes
22	Wc	3'0" x 4'9"	14 sq. ft	Yes
23	Kitchen	12'5" x 11'6"	142 sq. ft	Yes
24	Primary Bedroom	14'2" x 13'2"	187 sq. ft	Yes

103 Twin Cove Trail, Moneta, Bedford County, Virginia, United States, 24121

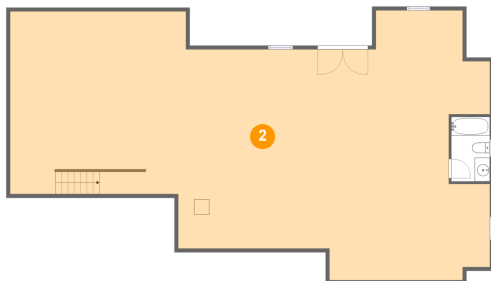
1 Floor 1 - Bath



Dimensions: 5'0" x 8'5"
Area: 42 sq. ft
Counted as Living Area: No

Heated: Yes
Finished: Yes
Enclosed: Yes
Contiguous: No
Permitted: Yes
Wet Space: Yes
Addition: No
Conversion: No

2 Floor 1 - Basement

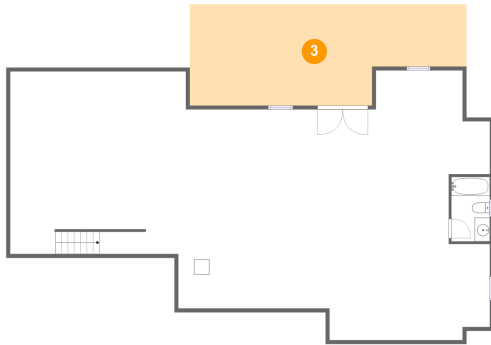


Dimensions: 62'7" x 35'2"
Area: 1667 sq. ft
Counted as Living Area: No

Heated: Yes
Finished: No
Enclosed: Yes
Contiguous: Yes
Permitted: Yes
Wet Space: No
Addition: No
Conversion: No

103 Twin Cove Trail, Moneta, Bedford County, Virginia, United States, 24121

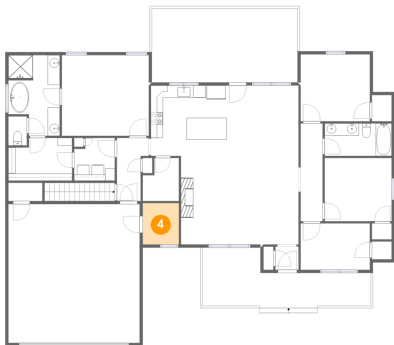
3 Floor 1 - Patio



Dimensions: 36'1" x 13'2"
Area: 415 sq. ft
Counted as Living Area: No

Heated: No
Finished: Yes
Enclosed: No
Contiguous: Yes
Permitted: Yes
Wet Space: No
Addition: No
Conversion: No

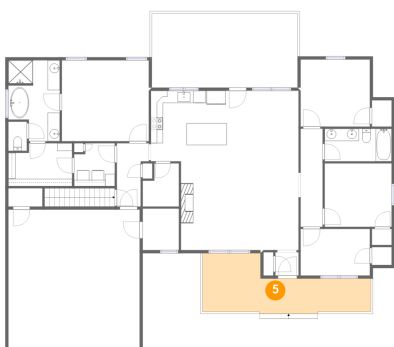
4 Floor 2 - Storage



Dimensions: 5'11" x 6'9"
Area: 40 sq. ft
Counted as Living Area: No

Heated: No
Finished: No
Enclosed: No
Contiguous: Yes
Permitted: Yes
Wet Space: No
Addition: No
Conversion: No

5 Floor 2 - Covered Porch



Dimensions: 27'6" x 9'10"
Area: 191 sq. ft
Counted as Living Area: No

Heated: No
Finished: Yes
Enclosed: No
Contiguous: Yes
Permitted: Yes
Wet Space: No
Addition: No
Conversion: No

103 Twin Cove Trail, Moneta, Bedford County, Virginia, United States, 24121

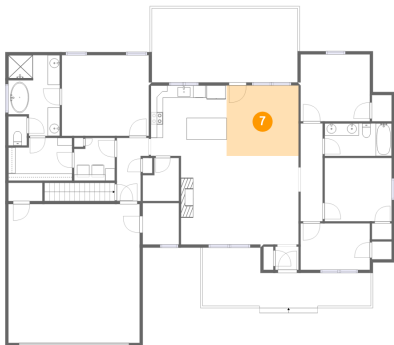
6 Floor 2 - Foyer



Dimensions: 3'9" x 3'10"
Area: 14 sq. ft
Counted as Living Area:
Yes

Heated: Yes
Finished: Yes
Enclosed: Yes
Contiguous:
Yes
Permitted: Yes
Wet Space: No
Addition: No
Conversion: No

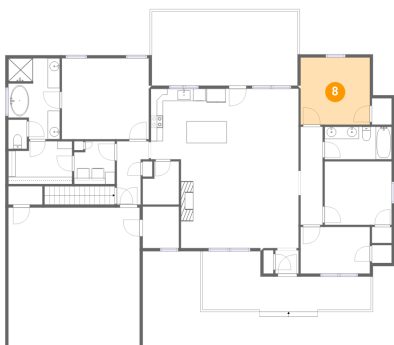
7 Floor 2 - Dining Area



Dimensions: 11'9" x 11'6"
Area: 135 sq. ft
Counted as Living Area:
Yes

Heated: Yes
Finished: Yes
Enclosed: Yes
Contiguous:
Yes
Permitted: Yes
Wet Space: No
Addition: No
Conversion: No

8 Floor 2 - Bedroom

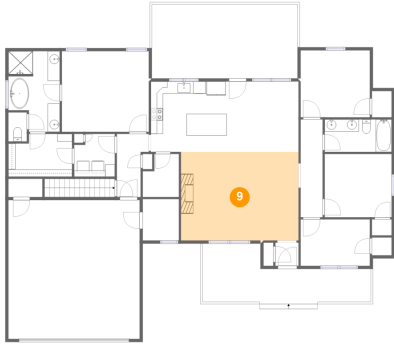


Dimensions: 11'4" x 10'11"
Area: 124 sq. ft
Counted as Living Area:
Yes

Heated: Yes
Finished: Yes
Enclosed: Yes
Contiguous:
Yes
Permitted: Yes
Wet Space: No
Addition: No
Conversion: No

103 Twin Cove Trail, Moneta, Bedford County, Virginia, United States, 24121

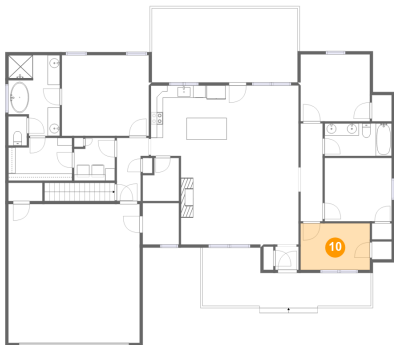
9 Floor 2 - Living Room



Dimensions: 19'3" x 14'5"
Area: 278 sq. ft
Counted as Living Area:
Yes

Heated: Yes
Finished: Yes
Enclosed: Yes
Contiguous:
Yes
Permitted: Yes
Wet Space: No
Addition: No
Conversion: No

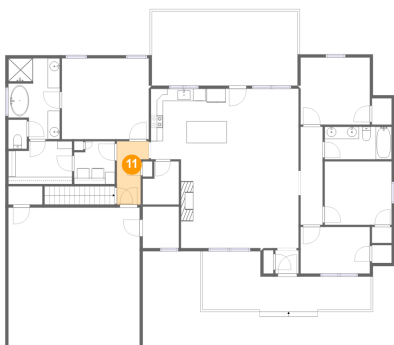
10 Floor 2 - Bedroom



Dimensions: 11'4" x 7'7"
Area: 86 sq. ft
Counted as Living Area:
Yes

Heated: Yes
Finished: Yes
Enclosed: Yes
Contiguous:
Yes
Permitted: Yes
Wet Space: No
Addition: No
Conversion: No

11 Floor 2 - Hall

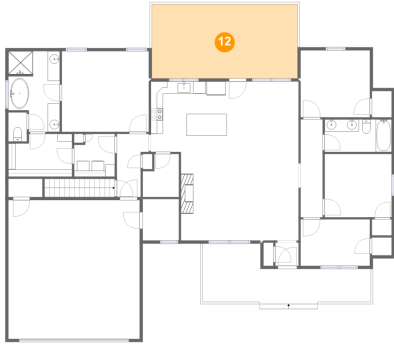


Dimensions: 5'3" x 10'4"
Area: 44 sq. ft
Counted as Living Area:
Yes

Heated: Yes
Finished: Yes
Enclosed: Yes
Contiguous:
Yes
Permitted: Yes
Wet Space: No
Addition: No
Conversion: No

103 Twin Cove Trail, Moneta, Bedford County, Virginia, United States, 24121

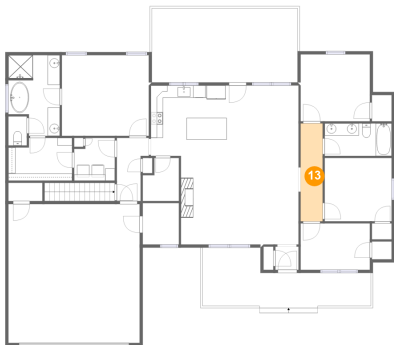
12 Floor 2 - Covered Deck



Dimensions: 23'9" x 12'1"
Area: 288 sq. ft
Counted as Living Area: No

Heated: No
Finished: Yes
Enclosed: No
Contiguous: No
Permitted: Yes
Wet Space: No
Addition: No
Conversion: No

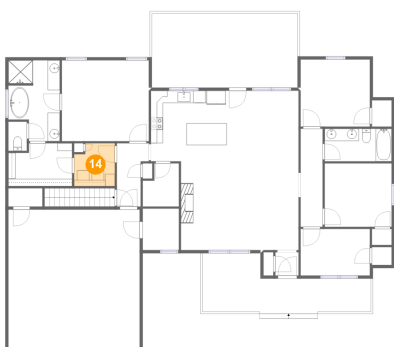
13 Floor 2 - Hall



Dimensions: 3'7" x 16'0"
Area: 58 sq. ft
Counted as Living Area: Yes

Heated: Yes
Finished: Yes
Enclosed: Yes
Contiguous: Yes
Permitted: Yes
Wet Space: No
Addition: No
Conversion: No

14 Floor 2 - Laundry



Dimensions: 6'8" x 7'0"
Area: 43 sq. ft
Counted as Living Area: Yes

Heated: Yes
Finished: Yes
Enclosed: Yes
Contiguous: Yes
Permitted: Yes
Wet Space: No
Addition: No
Conversion: No

103 Twin Cove Trail, Moneta, Bedford County, Virginia, United States, 24121

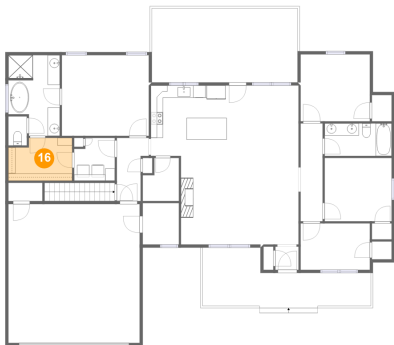
15 Floor 2 - Pantry



Dimensions: 5'11" x 7'0"
Area: 36 sq. ft
Counted as Living Area:
Yes

Heated: Yes
Finished: Yes
Enclosed: Yes
Contiguous:
Yes
Permitted: Yes
Wet Space: No
Addition: No
Conversion: No

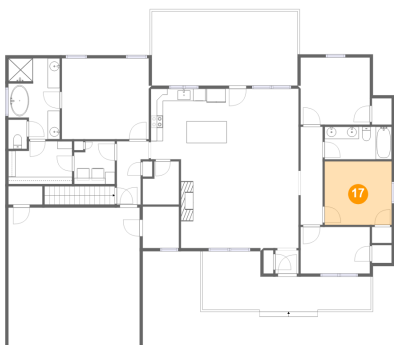
16 Floor 2 - W.i.c.



Dimensions: 10'5" x 7'0"
Area: 68 sq. ft
Counted as Living Area:
Yes

Heated: Yes
Finished: Yes
Enclosed: Yes
Contiguous:
Yes
Permitted: Yes
Wet Space: No
Addition: No
Conversion: No

17 Floor 2 - Bedroom

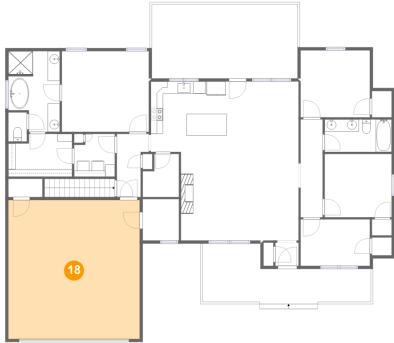


Dimensions: 10'11" x 10'4"
Area: 113 sq. ft
Counted as Living Area:
Yes

Heated: Yes
Finished: Yes
Enclosed: Yes
Contiguous:
Yes
Permitted: Yes
Wet Space: No
Addition: No
Conversion: No

103 Twin Cove Trail, Moneta, Bedford County, Virginia, United States, 24121

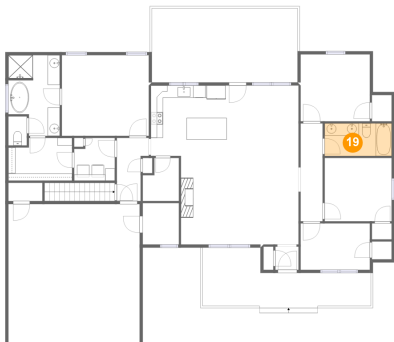
18 Floor 2 - Garage



Dimensions: 21'5" x 22'8"
Area: 486 sq. ft
Counted as Living Area: No

Heated: No
Finished: No
Enclosed: Yes
Contiguous: Yes
Permitted: Yes
Wet Space: No
Addition: No
Conversion: No

19 Floor 2 - Bath



Dimensions: 10'11" x 5'4"
Area: 58 sq. ft
Counted as Living Area:
Yes

Heated: Yes
Finished: Yes
Enclosed: Yes
Contiguous:
Yes
Permitted: Yes
Wet Space: Yes
Addition: No
Conversion: No

20 Floor 2 - Storage



Dimensions: 5'7" x 3'0"
Area: 17 sq. ft
Counted as Living Area: No

Heated: No
Finished: No
Enclosed: No
Contiguous: Yes
Permitted: Yes
Wet Space: No
Addition: No
Conversion: No

103 Twin Cove Trail, Moneta, Bedford County, Virginia, United States, 24121

21 Floor 2 - Primary Bath



Dimensions: 8'5" x 13'2"
Area: 98 sq. ft
Counted as Living Area:
Yes

Heated: Yes
Finished: Yes
Enclosed: Yes
Contiguous:
Yes
Permitted: Yes
Wet Space: Yes
Addition: No
Conversion: No

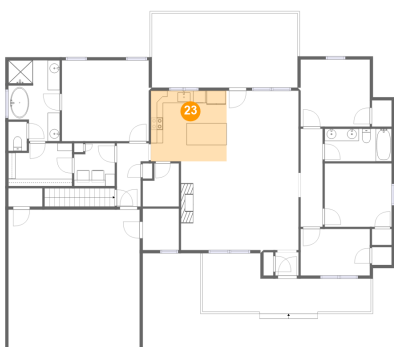
22 Floor 2 - Wc



Dimensions: 3'0" x 4'9"
Area: 14 sq. ft
Counted as Living Area:
Yes

Heated: Yes
Finished: Yes
Enclosed: Yes
Contiguous:
Yes
Permitted: Yes
Wet Space: Yes
Addition: No
Conversion: No

23 Floor 2 - Kitchen

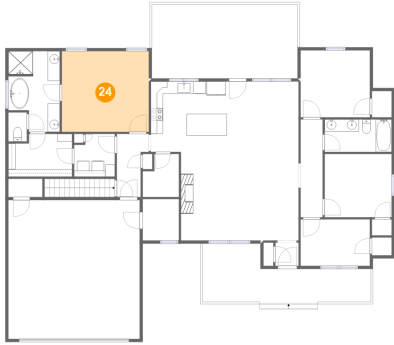


Dimensions: 12'5" x 11'6"
Area: 142 sq. ft
Counted as Living Area:
Yes

Heated: Yes
Finished: Yes
Enclosed: Yes
Contiguous:
Yes
Permitted: Yes
Wet Space: No
Addition: No
Conversion: No

103 Twin Cove Trail, Moneta, Bedford County, Virginia, United States, 24121

24 Floor 2 - Primary Bedroom



Dimensions: 14'2" x 13'2"
Area: 187 sq. ft
Counted as Living Area:
Yes

Heated: Yes
Finished: Yes
Enclosed: Yes
Contiguous:
Yes
Permitted: Yes
Wet Space: No
Addition: No
Conversion: No