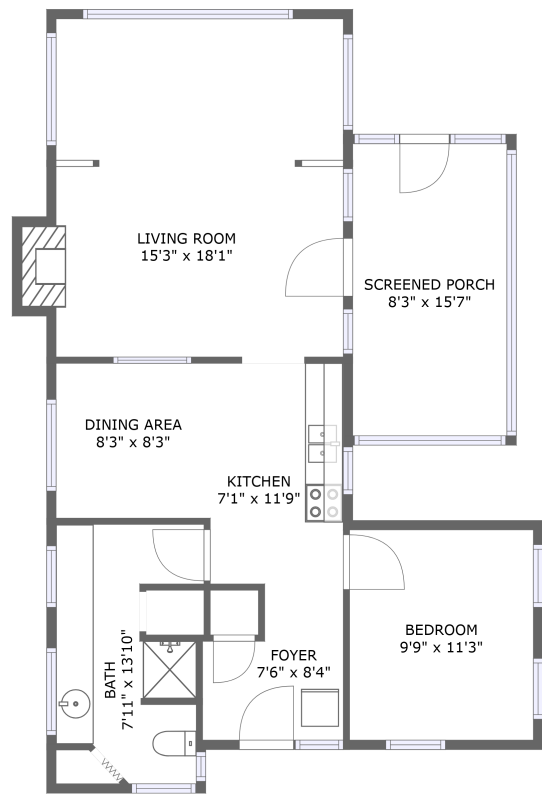


Home report

15 Milford Street, Amherst, Hillsborough County, New Hampshire, United States, 03031



FLOOR 1

Total Area: 788 sq. ft


Floor 1: 788 sq. ft

Excluded: Outdoor Porch Screen 145 sq. ft, Fireplace 10 sq. ft

Property summary

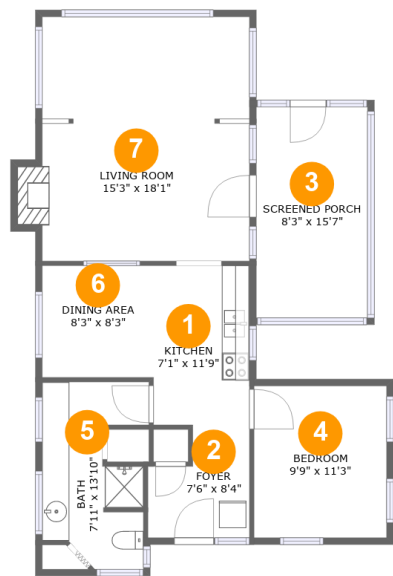
 1 Floors

 1 Bedrooms

 1 Bathrooms

Home report

15 Milford Street, Amherst, Hillsborough County, New Hampshire, United States, 03031



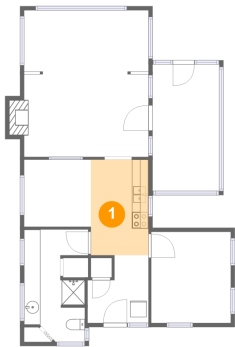
Room dimensions

Floor 1 Total:788sqft Excluded: 155sqft

#		Max Dimensions	sqft	Included
1	Kitchen	7'1" x 11'9"	84 sq. ft	Yes
2	Foyer	7'6" x 8'4"	52 sq. ft	Yes
3	Screened Porch	8'3" x 15'7"	128 sq. ft	No
4	Bedroom	9'9" x 11'3"	110 sq. ft	Yes
5	Bath	7'11" x 13'10"	88 sq. ft	Yes
6	Dining Area	8'3" x 8'3"	68 sq. ft	Yes
7	Living Room	15'3" x 18'1"	284 sq. ft	Yes

15 Milford Street, Amherst, Hillsborough County, New Hampshire, United States, 03031

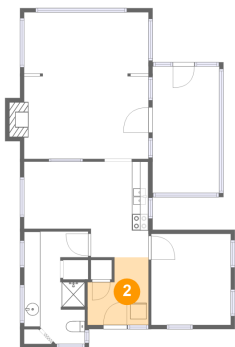
1 Floor 1 - Kitchen



Max Dimensions: 7'1" x 11'9"
Calculated Area: 84 sq. ft
Included: Yes

Heated: Yes
Finished: Yes
Enclosed: Yes
Contiguous: Yes
Permitted: Yes
Wet space: No
Addition: No
Conversion: No

2 Floor 1 - Foyer



Max Dimensions: 7'6" x 8'4"
Calculated Area: 52 sq. ft
Included: Yes

Heated: Yes
Finished: Yes
Enclosed: Yes
Contiguous: Yes
Permitted: Yes
Wet space: No
Addition: No
Conversion: No

15 Milford Street, Amherst, Hillsborough County, New Hampshire, United States, 03031

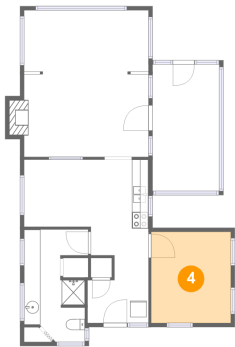
3 Floor 1 - Screened Porch



Max Dimensions: 8'3" x 15'7"
Calculated Area: 128 sq. ft
Included: No

Heated: No
Finished: Yes
Enclosed: No
Contiguous: Yes
Permitted: Yes
Wet space: No
Addition: No
Conversion: No

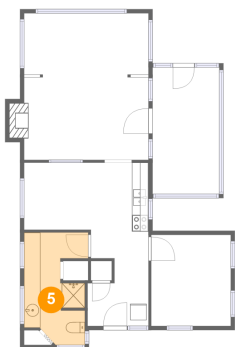
4 Floor 1 - Bedroom



Max Dimensions: 9'9" x 11'3"
Calculated Area: 110 sq. ft
Included: Yes

Heated: Yes
Finished: Yes
Enclosed: Yes
Contiguous: Yes
Permitted: Yes
Wet space: No
Addition: No
Conversion: No

5 Floor 1 - Bath

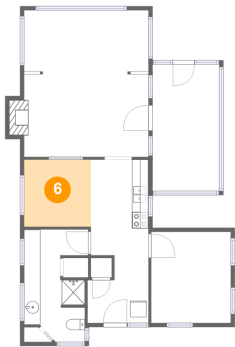


Max Dimensions: 7'11" x 13'10"
Calculated Area: 88 sq. ft
Included: Yes

Heated: Yes
Finished: Yes
Enclosed: Yes
Contiguous: Yes
Permitted: Yes
Wet space: Yes
Addition: No
Conversion: No

15 Milford Street, Amherst, Hillsborough County, New Hampshire, United States, 03031

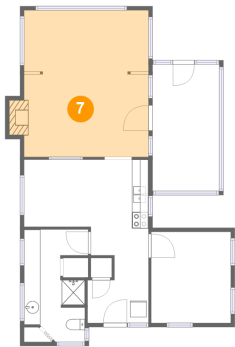
6 Floor 1 - Dining Area



Max Dimensions: 8'3" x 8'3"
Calculated Area: 68 sq. ft
Included: Yes

Heated: Yes
Finished: Yes
Enclosed: Yes
Contiguous: Yes
Permitted: Yes
Wet space: No
Addition: No
Conversion: No

7 Floor 1 - Living Room



Max Dimensions: 15'3" x 18'1"
Calculated Area: 284 sq. ft
Included: Yes

Heated: Yes
Finished: Yes
Enclosed: Yes
Contiguous: Yes
Permitted: Yes
Wet space: No
Addition: No
Conversion: No