

All Photos View

MLS® 24010954

Price: \$379,900

Address:

365 JOSEPHINE AVENUE



4Bd & 2Bth near UofW and Riverfront

Recently Renovated

Brick Facade and Covered Front Porch



Welcome to an Excellent Quality Property!

Awesome Open Porcelain Floored Kitchen.

Stainless Steel DW, Fridge & Stove included.



Quartz Countertop & Undermount Sink and Faucet.
Beautiful Chevron Backsplash.

Lovely Chevron Backsplash

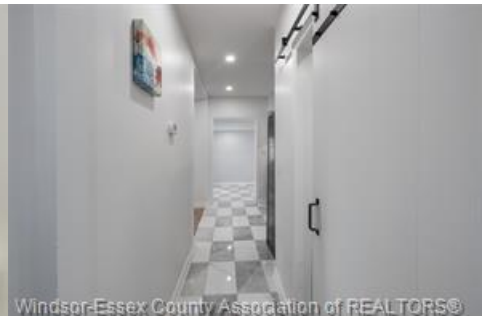
Huge Eating/Dining Sunroom area



Covered Large Sundeck.....GREAT for BBQing &
Private Lounging.

Bright Modern Livingroom

Open Concept design to Kitchen



View From Living Room Window.

Hallway to Foyer, and with New Thermostat.

High Ceilings Modern Decor, with Barn Door.



Barn Door to Main floor Bathroom



Main Floor 3 Piece Bathroom



Large Front Main Floor Bedroom #1



Wide Step Staircase to Upper Level



Upper large Bedroom #2



Upper Large Bedroom #3



Upper Large Bedroom #4



Upper Stacked W&D included



Upper 3 Piece Bathroom 4ft Shower Stall with sliding glass door.



Chrome Bullnoses and finished steps leading to lower level



Lower Level for Children's Play Area.



Solid Furnace and venting



Lots of Lower Level Storage and work space



Easy access alley parking



Graveled and wide for 2 vehicles



Rear House View



2021 AC, with warranty through MM-Mechanical.



Drone Front Neighbourhood shot.



Top Drone Front Pic



Close House Proximity to Riverfront



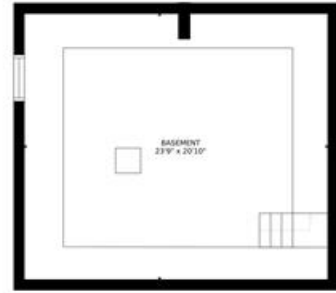
Top Drone Roof picture.



Main Level Floor Plan



Upper Level Floor Plan



Lower Level Floor Plan



All 3 Levels