

Home report

176 Flat Sedge Crescent, Riverside South, Gloucester, Ontario, Canada, K1T 0G9




Total Area: 2130 sq. ft

Floor 1: 393 sq. ft, Floor 2: 763 sq. ft, Floor 3: 974 sq. ft

Excluded: Storage 338 sq. ft, Fireplace 12 sq. ft, Walls: 178 sq. ft

Property summary

 **3** Floors

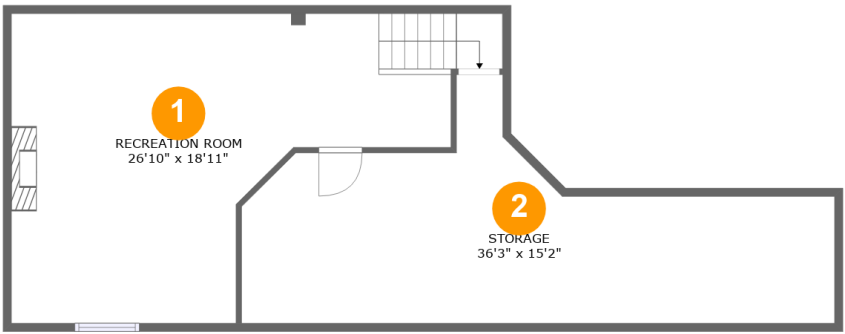
 **3** Bedrooms

 **2** Bathrooms

 **1** Half baths

Home report

176 Flat Sedge Crescent, Riverside South, Gloucester, Ontario,
Canada, K1T 0G9



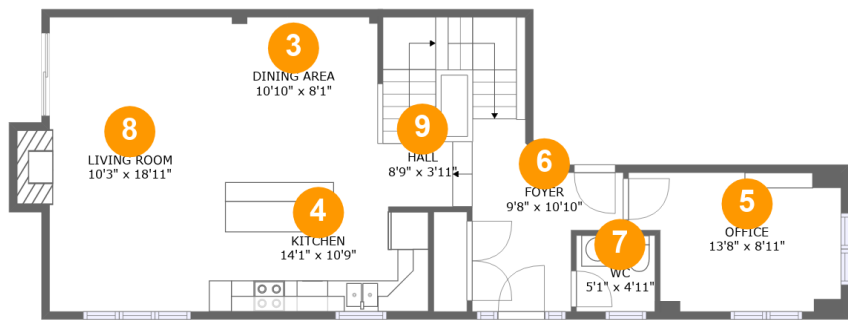
Room dimensions

Floor 1 Total:393sqft Excluded: 338sqft

#		Max Dimensions	sqft	Included
1	Recreation Room	26'10" x 18'11"	383 sq. ft	Yes
2	Storage	36'3" x 15'2"	338 sq. ft	No

Home report

176 Flat Sedge Crescent, Riverside South, Gloucester, Ontario,
Canada, K1T 0G9



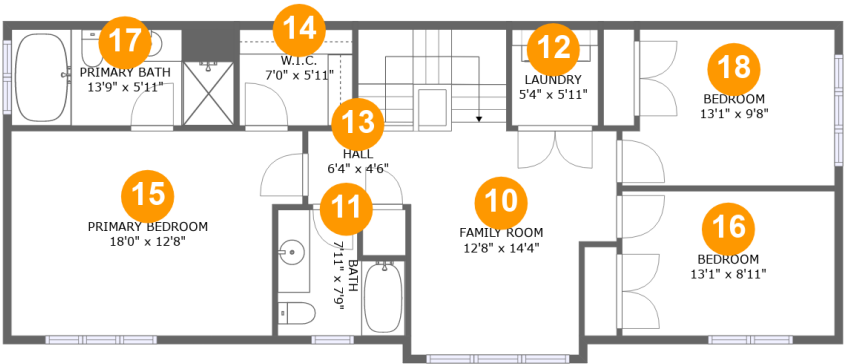
Room dimensions

Floor 2 Total:763sqft Excluded: 12sqft

#		Max Dimensions	sqft	Included
3	Dining Area	10'10" x 8'1"	88 sq. ft	Yes
4	Kitchen	14'1" x 10'9"	138 sq. ft	Yes
5	Office	13'8" x 8'11"	111 sq. ft	Yes
6	Foyer	9'8" x 10'10"	70 sq. ft	Yes
7	WC	5'1" x 4'11"	25 sq. ft	Yes
8	Living Room	10'3" x 18'11"	204 sq. ft	Yes
9	Hall	8'9" x 3'11"	107 sq. ft	Yes

Home report

176 Flat Sedge Crescent, Riverside South, Gloucester, Ontario, Canada, K1T 0G9

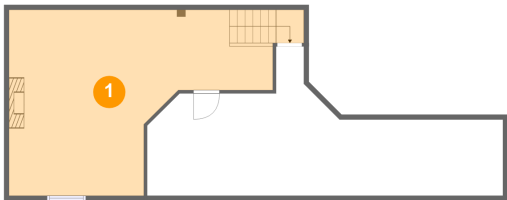


Room dimensions

Floor 3 Total:974sqft Excluded: 0sqft

#		Max Dimensions	sqft	Included
10	Family Room	12'8" x 14'4"	196 sq. ft	Yes
11	Bath	7'11" x 7'9"	52 sq. ft	Yes
12	Laundry	5'4" x 5'11"	32 sq. ft	Yes
13	Hall	6'4" x 4'6"	49 sq. ft	Yes
14	W.I.C.	7'0" x 5'11"	41 sq. ft	Yes
15	Primary Bedroom	18'0" x 12'8"	212 sq. ft	Yes
16	Bedroom	13'1" x 8'11"	117 sq. ft	Yes
17	Primary Bath	13'9" x 5'11"	82 sq. ft	Yes
18	Bedroom	13'1" x 9'8"	120 sq. ft	Yes

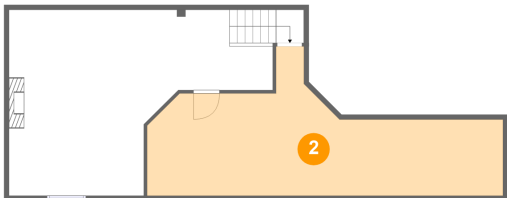
1 Floor 1 - Recreation Room



Max Dimensions: 26'10" x 18'11"
Calculated Area: 383 sq. ft
Included: No

Heated: Yes
Finished: Yes
Enclosed: Yes
Contiguous: No
Permitted: Yes
Wet space: No
Addition: No
Conversion: No

2 Floor 1 - Storage



Max Dimensions: 36'3" x 15'2"
Calculated Area: 338 sq. ft
Included: No

Heated: No
Finished: No
Enclosed: No
Contiguous: Yes
Permitted: Yes
Wet space: No
Addition: No
Conversion: No

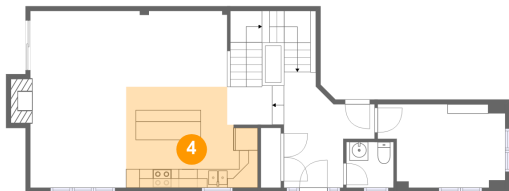
3 Floor 2 - Dining Area



Max Dimensions: 10'10" x 8'1"
Calculated Area: 88 sq. ft
Included: Yes

Heated: Yes
Finished: Yes
Enclosed: Yes
Contiguous: Yes
Permitted: Yes
Wet space: No
Addition: No
Conversion: No

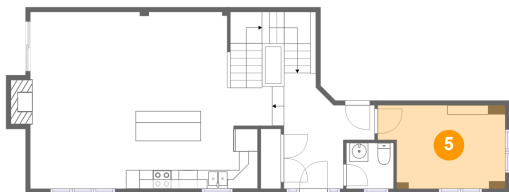
4 Floor 2 - Kitchen



Max Dimensions: 14'1" x 10'9"
Calculated Area: 138 sq. ft
Included: Yes

Heated: Yes
Finished: Yes
Enclosed: Yes
Contiguous: Yes
Permitted: Yes
Wet space: No
Addition: No
Conversion: No

5 Floor 2 - Office



Max Dimensions: 13'8" x 8'11"
Calculated Area: 111 sq. ft
Included: Yes

Heated: Yes
Finished: Yes
Enclosed: Yes
Contiguous: Yes
Permitted: Yes
Wet space: No
Addition: No
Conversion: No

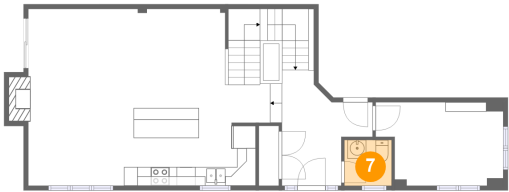
6 Floor 2 - Foyer



Max Dimensions: 9'8" x 10'10"
Calculated Area: 70 sq. ft
Included: Yes

Heated: Yes
Finished: Yes
Enclosed: Yes
Contiguous: Yes
Permitted: Yes
Wet space: No
Addition: No
Conversion: No

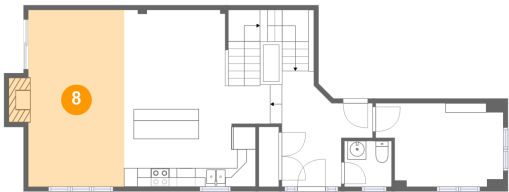
7 Floor 2 - WC



Max Dimensions: 5'1" x 4'11"
Calculated Area: 25 sq. ft
Included: Yes

Heated: Yes
Finished: Yes
Enclosed: Yes
Contiguous: Yes
Permitted: Yes
Wet space: Yes
Addition: No
Conversion: No

8 Floor 2 - Living Room



Max Dimensions: 10'3" x 18'11"
Calculated Area: 204 sq. ft
Included: Yes

Heated: Yes
Finished: Yes
Enclosed: Yes
Contiguous: Yes
Permitted: Yes
Wet space: No
Addition: No
Conversion: No

Home report

176 Flat Sedge Crescent, Riverside South, Gloucester, Ontario,
Canada, K1T 0G9

9 Floor 2 - Hall



Max Dimensions: 8'9" x
3'11"
Calculated Area: 107 sq. ft
Included: Yes

Heated: Yes
Finished: Yes
Enclosed: Yes
Contiguous:
Yes
Permitted: Yes
Wet space: No
Addition: No
Conversion: No

10 Floor 3 - Family Room



Max Dimensions: 12'8" x
14'4"
Calculated Area: 196 sq. ft
Included: Yes

Heated: Yes
Finished: Yes
Enclosed: Yes
Contiguous:
Yes
Permitted: Yes
Wet space: No
Addition: No
Conversion: No

11 Floor 3 - Bath



Max Dimensions: 7'11" x
7'9"
Calculated Area: 52 sq. ft
Included: Yes

Heated: Yes
Finished: Yes
Enclosed: Yes
Contiguous:
Yes
Permitted: Yes
Wet space: Yes
Addition: No
Conversion: No

176 Flat Sedge Crescent, Riverside South, Gloucester, Ontario,
Canada, K1T 0G9

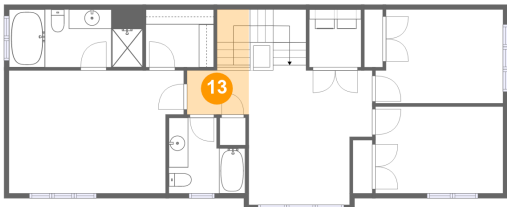
12 Floor 3 - Laundry



Max Dimensions: 5'4" x 5'11"
Calculated Area: 32 sq. ft
Included: Yes

Heated: Yes
Finished: Yes
Enclosed: Yes
Contiguous: Yes
Permitted: Yes
Wet space: No
Addition: No
Conversion: No

13 Floor 3 - Hall



Max Dimensions: 6'4" x 4'6"
Calculated Area: 49 sq. ft
Included: Yes

Heated: Yes
Finished: Yes
Enclosed: Yes
Contiguous: Yes
Permitted: Yes
Wet space: No
Addition: No
Conversion: No

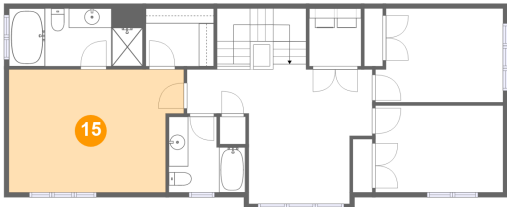
14 Floor 3 - W.I.C.



Max Dimensions: 7'0" x 5'11"
Calculated Area: 41 sq. ft
Included: Yes

Heated: Yes
Finished: Yes
Enclosed: Yes
Contiguous: Yes
Permitted: Yes
Wet space: No
Addition: No
Conversion: No

15 Floor 3 - Primary Bedroom



Max Dimensions: 18'0" x 12'8"
Calculated Area: 212 sq. ft
Included: Yes

Heated: Yes
Finished: Yes
Enclosed: Yes
Contiguous: Yes
Permitted: Yes
Wet space: No
Addition: No
Conversion: No

16 Floor 3 - Bedroom



Max Dimensions: 13'1" x 8'11"
Calculated Area: 117 sq. ft
Included: Yes

Heated: Yes
Finished: Yes
Enclosed: Yes
Contiguous: Yes
Permitted: Yes
Wet space: No
Addition: No
Conversion: No

17 Floor 3 - Primary Bath



Max Dimensions: 13'9" x 5'11"
Calculated Area: 82 sq. ft
Included: Yes

Heated: Yes
Finished: Yes
Enclosed: Yes
Contiguous: Yes
Permitted: Yes
Wet space: Yes
Addition: No
Conversion: No

176 Flat Sedge Crescent, Riverside South, Gloucester, Ontario,
Canada, K1T 0G9

18 Floor 3 - Bedroom



Max Dimensions: 13'1" x 9'8"
Calculated Area: 120 sq. ft
Included: Yes

Heated: Yes
Finished: Yes
Enclosed: Yes
Contiguous: Yes
Permitted: Yes
Wet space: No
Addition: No
Conversion: No