





# 875 Brookside Lane, Pocatello, Bannock County, Idaho, United States, 83204

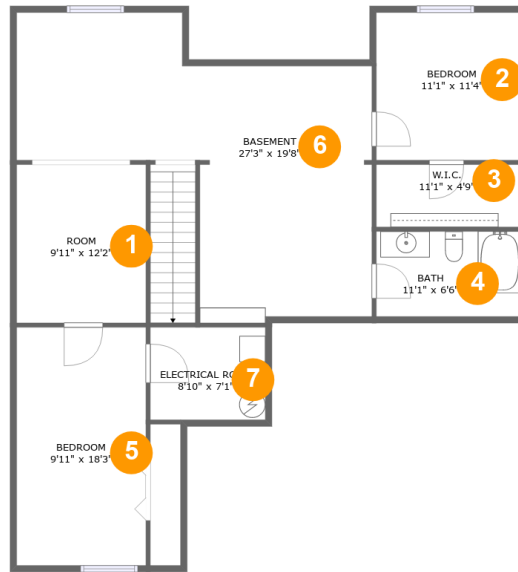


## Property Summary

 **1** garages     **4** bedrooms     **3** bathrooms     **0** half baths

 **2** floors     **2,352** Gross Living Area sqft     **3,092** total sqft

**875 Brookside Lane, Pocatello, Bannock County, Idaho, United States, 83204**



**Room Dimensions**

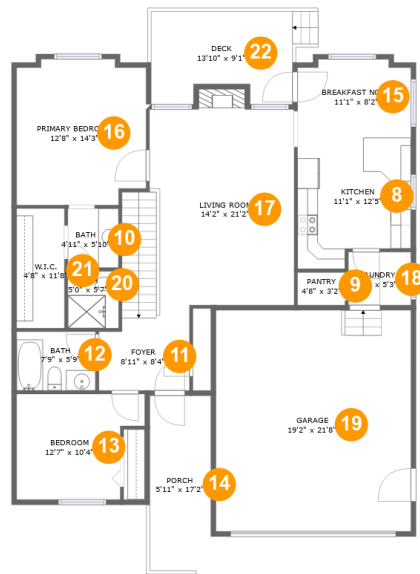
**Floor 1**

**Total sqft: 1199**

**Living area: 1130**

#	Room name	Dimensions	Area (sqft)	Counted as Living Area
1	Room	9'11" x 12'2"	120 sq. ft	Yes
2	Bedroom	11'1" x 11'4"	126 sq. ft	Yes
3	W.i.c.	11'1" x 4'9"	53 sq. ft	Yes
4	Bath	11'1" x 6'6"	72 sq. ft	Yes
5	Bedroom	9'11" x 18'3"	181 sq. ft	Yes
6	Basement	27'3" x 19'8"	408 sq. ft	Yes
7	Electrical Room	8'10" x 7'1"	63 sq. ft	No

# 875 Brookside Lane, Pocatello, Bannock County, Idaho, United States, 83204



## Room Dimensions

Floor 2

Total sqft: 1893

Living area: 1222

#	Room name	Dimensions	Area (sqft)	Counted as Living Area
8	Kitchen	11'1" x 12'5"	125 sq. ft	Yes
9	Pantry	4'8" x 3'2"	15 sq. ft	Yes
10	Bath	4'11" x 5'10"	29 sq. ft	Yes
11	Foyer	8'11" x 8'4"	69 sq. ft	Yes
12	Bath	7'9" x 5'9"	45 sq. ft	Yes
13	Bedroom	12'7" x 10'4"	113 sq. ft	Yes
14	Porch	5'11" x 17'2"	103 sq. ft	No
15	Breakfast Nook	11'1" x 8'2"	87 sq. ft	Yes
16	Primary Bedroom	12'8" x 14'3"	173 sq. ft	Yes
17	Living Room	14'2" x 21'2"	311 sq. ft	Yes
18	Laundry	6'2" x 5'3"	32 sq. ft	Yes

Scan captured on Tue, 20 Aug 2024 19:57:53 GMT

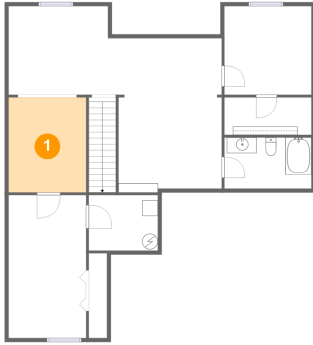
Information is calculated by CubiCasa technology; deemed highly reliable but not guaranteed.

**875 Brookside Lane, Pocatello, Bannock County,  
Idaho, United States, 83204**

#	Room name	Dimensions	Area (sqft)	Counted as Living Area
19	Garage	19'2" x 21'8"	415 sq. ft	No
20	Bath	5'0" x 5'7"	28 sq. ft	Yes
21	W.i.c.	4'8" x 11'8"	55 sq. ft	Yes
22	Deck	13'10" x 9'1"	115 sq. ft	No

# 875 Brookside Lane, Pocatello, Bannock County, Idaho, United States, 83204

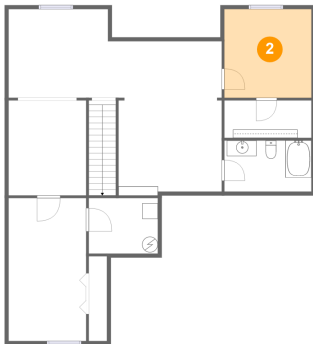
## 1 Floor 1 - Room



Dimensions: 9'11" x 12'2"  
Area: 120 sq. ft  
Counted as Living Area:  
Yes

Heated: Yes  
Finished: Yes  
Enclosed: Yes  
Contiguous:  
Yes  
Permitted: Yes  
Wet Space: No  
Addition: No  
Conversion: No

## 2 Floor 1 - Bedroom

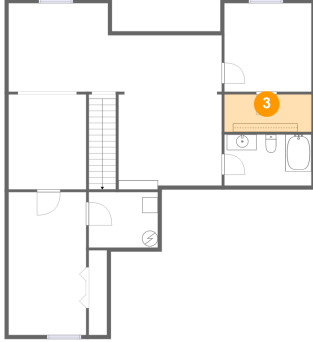


Dimensions: 11'1" x 11'4"  
Area: 126 sq. ft  
Counted as Living Area:  
Yes

Heated: Yes  
Finished: Yes  
Enclosed: Yes  
Contiguous:  
Yes  
Permitted: Yes  
Wet Space: No  
Addition: No  
Conversion: No

# 875 Brookside Lane, Pocatello, Bannock County, Idaho, United States, 83204

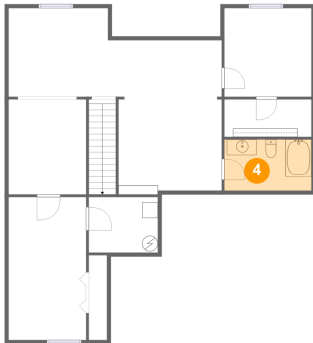
## 3 Floor 1 - W.i.c.



Dimensions: 11'1" x 4'9"  
Area: 53 sq. ft  
Counted as Living Area:  
Yes

Heated: Yes  
Finished: Yes  
Enclosed: Yes  
Contiguous:  
Yes  
Permitted: Yes  
Wet Space: No  
Addition: No  
Conversion: No

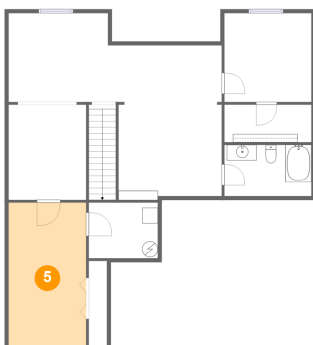
## 4 Floor 1 - Bath



Dimensions: 11'1" x 6'6"  
Area: 72 sq. ft  
Counted as Living Area:  
Yes

Heated: Yes  
Finished: Yes  
Enclosed: Yes  
Contiguous:  
Yes  
Permitted: Yes  
Wet Space: Yes  
Addition: No  
Conversion: No

## 5 Floor 1 - Bedroom

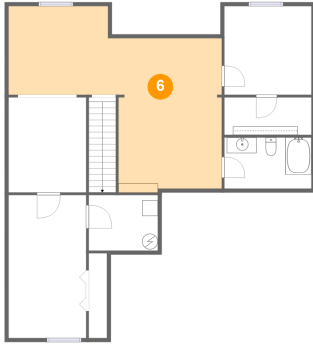


Dimensions: 9'11" x 18'3"  
Area: 181 sq. ft  
Counted as Living Area:  
Yes

Heated: Yes  
Finished: Yes  
Enclosed: Yes  
Contiguous:  
Yes  
Permitted: Yes  
Wet Space: No  
Addition: No  
Conversion: No

# 875 Brookside Lane, Pocatello, Bannock County, Idaho, United States, 83204

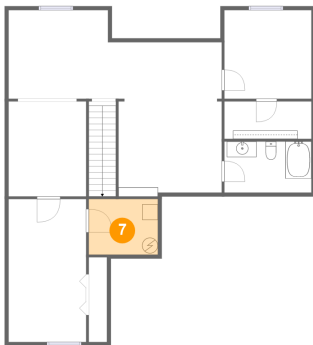
## 6 Floor 1 - Basement



Dimensions: 27'3" x 19'8"  
Area: 408 sq. ft  
Counted as Living Area:  
Yes

Heated: Yes  
Finished: Yes  
Enclosed: Yes  
Contiguous:  
Yes  
Permitted: Yes  
Wet Space: No  
Addition: No  
Conversion: No

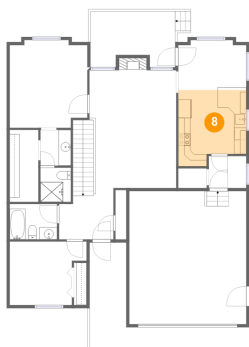
## 7 Floor 1 - Electrical Room



Dimensions: 8'10" x 7'1"  
Area: 63 sq. ft  
Counted as Living Area: No

Heated: No  
Finished: No  
Enclosed: Yes  
Contiguous: Yes  
Permitted: Yes  
Wet Space: No  
Addition: No  
Conversion: No

## 8 Floor 2 - Kitchen

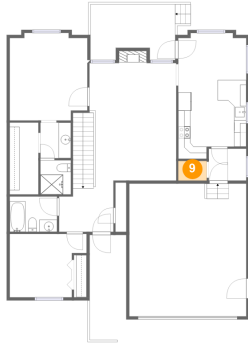


Dimensions: 11'1" x 12'5"  
Area: 125 sq. ft  
Counted as Living Area:  
Yes

Heated: Yes  
Finished: Yes  
Enclosed: Yes  
Contiguous:  
Yes  
Permitted: Yes  
Wet Space: No  
Addition: No  
Conversion: No

# 875 Brookside Lane, Pocatello, Bannock County, Idaho, United States, 83204

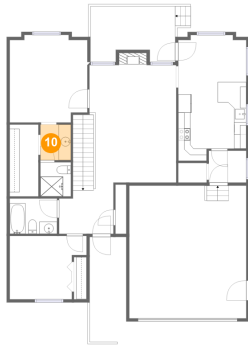
## 9 Floor 2 - Pantry



Dimensions: 4'8" x 3'2"  
Area: 15 sq. ft  
Counted as Living Area:  
Yes

Heated: Yes  
Finished: Yes  
Enclosed: Yes  
Contiguous:  
Yes  
Permitted: Yes  
Wet Space: No  
Addition: No  
Conversion: No

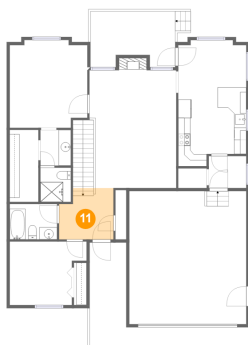
## 10 Floor 2 - Bath



Dimensions: 4'11" x 5'10"  
Area: 29 sq. ft  
Counted as Living Area:  
Yes

Heated: Yes  
Finished: Yes  
Enclosed: Yes  
Contiguous:  
Yes  
Permitted: Yes  
Wet Space: Yes  
Addition: No  
Conversion: No

## 11 Floor 2 - Foyer



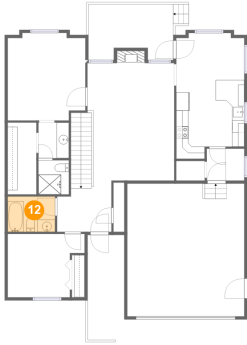
Dimensions: 8'11" x 8'4"  
Area: 69 sq. ft  
Counted as Living Area:  
Yes

Heated: Yes  
Finished: Yes  
Enclosed: Yes  
Contiguous:  
Yes  
Permitted: Yes  
Wet Space: No  
Addition: No  
Conversion: No



# 875 Brookside Lane, Pocatello, Bannock County, Idaho, United States, 83204

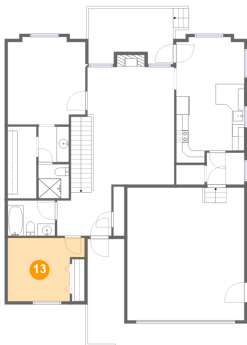
## 12 Floor 2 - Bath



Dimensions: 7'9" x 5'9"  
Area: 45 sq. ft  
Counted as Living Area:  
Yes

Heated: Yes  
Finished: Yes  
Enclosed: Yes  
Contiguous:  
Yes  
Permitted: Yes  
Wet Space: Yes  
Addition: No  
Conversion: No

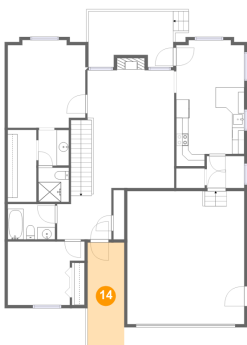
## 13 Floor 2 - Bedroom



Dimensions: 12'7" x 10'4"  
Area: 113 sq. ft  
Counted as Living Area:  
Yes

Heated: Yes  
Finished: Yes  
Enclosed: Yes  
Contiguous:  
Yes  
Permitted: Yes  
Wet Space: No  
Addition: No  
Conversion: No

## 14 Floor 2 - Porch

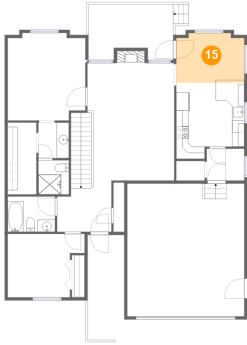


Dimensions: 5'11" x 17'2"  
Area: 103 sq. ft  
Counted as Living Area: No

Heated: No  
Finished: Yes  
Enclosed: No  
Contiguous: Yes  
Permitted: Yes  
Wet Space: No  
Addition: No  
Conversion: No

# 875 Brookside Lane, Pocatello, Bannock County, Idaho, United States, 83204

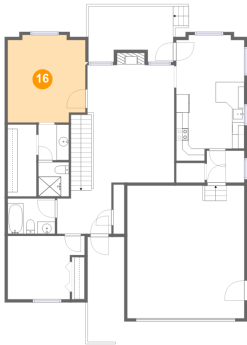
## 15 Floor 2 - Breakfast Nook



Dimensions: 11'1" x 8'2"  
Area: 87 sq. ft  
Counted as Living Area:  
Yes

Heated: Yes  
Finished: Yes  
Enclosed: Yes  
Contiguous:  
Yes  
Permitted: Yes  
Wet Space: No  
Addition: No  
Conversion: No

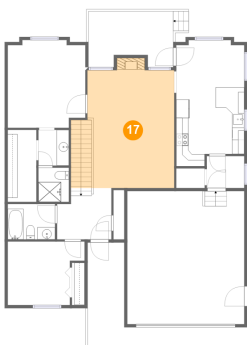
## 16 Floor 2 - Primary Bedroom



Dimensions: 12'8" x 14'3"  
Area: 173 sq. ft  
Counted as Living Area:  
Yes

Heated: Yes  
Finished: Yes  
Enclosed: Yes  
Contiguous:  
Yes  
Permitted: Yes  
Wet Space: No  
Addition: No  
Conversion: No

## 17 Floor 2 - Living Room

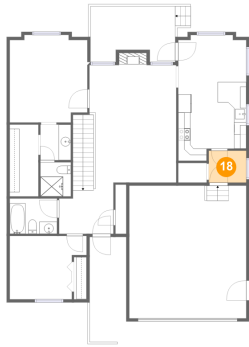


Dimensions: 14'2" x 21'2"  
Area: 311 sq. ft  
Counted as Living Area:  
Yes

Heated: Yes  
Finished: Yes  
Enclosed: Yes  
Contiguous:  
Yes  
Permitted: Yes  
Wet Space: No  
Addition: No  
Conversion: No

# 875 Brookside Lane, Pocatello, Bannock County, Idaho, United States, 83204

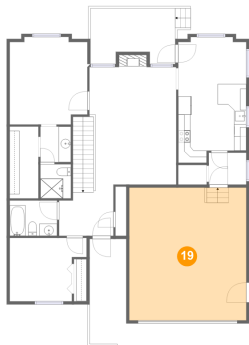
## 18 Floor 2 - Laundry



Dimensions: 6'2" x 5'3"  
Area: 32 sq. ft  
Counted as Living Area:  
Yes

Heated: Yes  
Finished: Yes  
Enclosed: Yes  
Contiguous:  
Yes  
Permitted: Yes  
Wet Space: No  
Addition: No  
Conversion: No

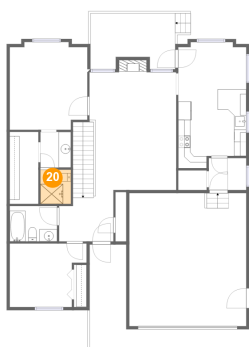
## 19 Floor 2 - Garage



Dimensions: 19'2" x 21'8"  
Area: 415 sq. ft  
Counted as Living Area: No

Heated: No  
Finished: No  
Enclosed: Yes  
Contiguous: Yes  
Permitted: Yes  
Wet Space: No  
Addition: No  
Conversion: No

## 20 Floor 2 - Bath

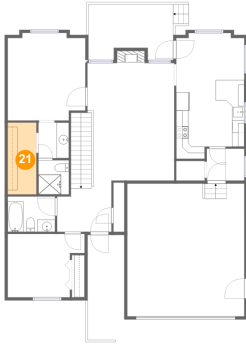


Dimensions: 5'0" x 5'7"  
Area: 28 sq. ft  
Counted as Living Area:  
Yes

Heated: Yes  
Finished: Yes  
Enclosed: Yes  
Contiguous:  
Yes  
Permitted: Yes  
Wet Space: Yes  
Addition: No  
Conversion: No

# 875 Brookside Lane, Pocatello, Bannock County, Idaho, United States, 83204

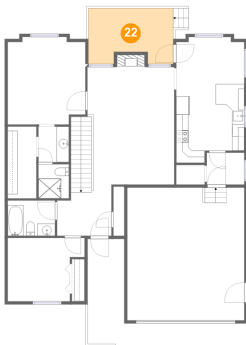
## 21 Floor 2 - W.i.c.



Dimensions: 4'8" x 11'8"  
Area: 55 sq. ft  
Counted as Living Area: Yes

Heated: Yes  
Finished: Yes  
Enclosed: Yes  
Contiguous: Yes  
Permitted: Yes  
Wet Space: No  
Addition: No  
Conversion: No

## 22 Floor 2 - Deck



Dimensions: 13'10" x 9'1"  
Area: 115 sq. ft  
Counted as Living Area: No

Heated: No  
Finished: Yes  
Enclosed: No  
Contiguous: Yes  
Permitted: Yes  
Wet Space: No  
Addition: No  
Conversion: No